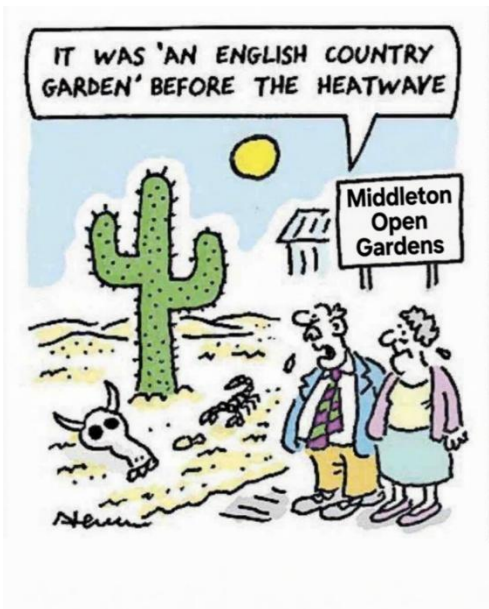


MIDDLETON - CUM - FORDLEY



NEWSLETTER

June 2026



"with thanks to the Sunday Times"

JB



A Call out for : Cakes, Chutneys, Jams
and help on the day
6th & 7th June 2026

We are looking forward to another open gardens event.
Last year we received some delicious contributions from people of the village and we would welcome these again this year.
We would also welcome people to help us with setting up and working in the refreshments team, so if you feel you could join us for a shift, we would be very grateful.
Please contact : Christine Burgess Tel: 07826840478 or email: christineburgess29@gmail.com

Major fundraiser for Holy Trinity church & donations this year to East Anglian Air Ambulance





MIDDLETON OPEN GARDENS



**Buy The Bell Inn
for our community
Vinyl Night
from 6pm
Saturday 6th June
at
The Bell Inn Middleton
All donations gratefully received on the night will go
towards buying our pub**



Midsummer Quiz

SATURDAY 27TH JUNE

As per the past couple of years the midsummer quiz will be held on the playing field if the weather permits, otherwise it will be in the Village Hall.

Teams of up to 6 £2.50 pp entry. 6.30 for 7pm prompt start

Bring a picnic and own drinks and if you can donate a raffle prize that would be lovely.
Thank you.

Please book your team in: middletoncommunitycouncil@gmail.com

(Let us know if you haven't got 6 and we may be able to pair you up.)



Holy Trinity Church

We're excited to be hosting the launch of the new album *Curiosa: Lost & Found Tunes* by Jorge Jiménez. This May and June he will be touring it around the UK, and we have the pleasure of seeing him perform at **Holy Trinity Church on the 20th June at 7pm.**

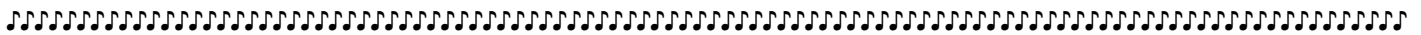
Jorge says of the album "In *CURIOSA*, we take you on a journey across five centuries — from medieval laments and Renaissance dances to the brilliance of Bach and the fire of the Spanish Baroque. Performed on period instruments, a blend of iconic composers with forgotten and traditional melodies, brought to life through improvisation and our original arrangements."

Tickets: <https://www.ticketsource.com/whats-on/suffolk/holy-trinity-church-middleton/curiosa-lost-found-tunes/2026-06-20/19:00/t-dkkpedk>

or on the door from 6pm

Jorge is one of the most sought after violinists of our day. He is known for his painstaking and exciting approach, performing music in the style and on instruments for which it was composed, from the Middle Ages to the 21st century. With his eclectic solo violin programs, Jorge has toured extensively through Europe, South America and Canada.

For more information on Jorge Jiménez, visit: <https://www.jorge-jimenez.es/>



Curiosa
Lost & Found Tunes
Jorge Jiménez baroque violin
Joy Smith, harps & percussion

Saturday 20 June
19:00
Holy Trinity Church
Middleton
Suffolk
IP17 3NJ

Scan to book

Tickets: £15
Concessions: £12 (Under 16 Free)
Book online: <https://www.ticketsource.co.uk/jorge-jimenez/t-dkkpedk>
Or on the door from 1h before the concert
More info: 07580441394

★★★★★ "effortless technical finesse" The Strad Magazine
★★★★★ "Risky and Original" El Mundo
★★★★★ "Madness Crowned by success" Scherzo Magazine

Cream tea afternoon
12 June 2026

Raffle 2:00-4:30

To raise money for the East Anglian Air Ambulance

East Anglian Air Ambulance

Tombola Middleton bell inn IP17 3NN Plant stall

COME AND JOIN US FOR A TALK
Living well with Alzheimer's
With Peter Berry

Time: 2.30pm
Date: 5th July 2026
Location: Holy Trinity Church, Middleton

Refreshments will be available

There will be an opportunity to buy our books

All donations to Alzheimer's Research UK

SIZEWELL C ROAD CLOSURES LATE MAY - JUNE 2026

Date	Location	Daytime / Night time closure	Works
June 2026 to Q3 2027	Pretty Road	Full closure	Sizewell Link Road
26 to 28 May or 1 to 3 Jun (TBC)	A12 Marlesford	Nighttime closure	Marlesford Scheme
29 May to 31 May (TBC)	B1122 Abbey Road, Eastbridge Road and Lover's Lane	Full weekend closure	Plaza roundabout and Green Rail Route
1 Jun to 10 Jul	B1387 Blythburgh	Daytime closure	AD2 Blythburgh
2 to 4 Jun	Between B1122/ B1125 junction to Theberton	Nighttime closure	Vegetation, white lining, surfacing
1 to 4, 8 to 9, 15 to 18, 22 to 25 June (TBC)	B1122 beyond Theberton between Onners Lane and Eastbridge Road junctions	Nighttime closure	Vegetation, white lining, surfacing
6am 8 June to 6pm 20 July	B1122 Leiston level crossing	Full closure	Level crossing
5 to 7 and 12 to 14 Jun	B1122 Abbey Road, Eastbridge Road and Lover's Lane	Full weekend closure	Plaza roundabout and Green Rail Route
10 to 11 Jun	Friday St A12/ A1094	Full weekend closure	Resurfacing
12 to 14 June (TBC)	A12 Stratford St Andrew	Full weekend closure	Two Village Bypass
19 to 21 and 26 to 28 June	A12 and B1122 Yoxford	Full closure	Yoxford roundabout
29 Jun to 2 Jul, 6 to 9 Jul	B1122 Middleton Moor, Yoxford Road and Leiston Road (TBC)	Nighttime closure	Vegetation, white lining, surfacing

Nighttime closures are normally 8pm to 5am

Weekend closures are normally 8pm Friday to 5am Monday

For more information and updates, including diversion routes, see www.szcworkstracker.co.uk or <https://one.network/>

On a lighter note.....

Coopers - Why hast thou forsaken us?

Coopers our favourite shop closed one day,
 Its welcome sign dimmed, then thrown away.
 No clatter now of pans and drills,
 No shiny padlocks hanging behind the tills.
 The paint mixer would give you any shade
 A tin of pink or blue in one instant made
 Old hands came in for nuts and screws,
 For bits of wire and exchange of news.
 The assistants knew each face by name,
 What size of bolt, what type of frame.
 He'd say, "Try this—it ought to fit,"
 They talk a while and laugh a bit.
 Coopers' trade grew thin, the rent climbed high,
 The weeks so slow, the months flashed by.

And one by one the shelves grew bare,
 As autumn leaves falling through dusky air.
 Now screening covers all the glass,
 And strangers hurry as they pass.
 Yet somewhere sheds and kitchens keep
 The souvenirs of things repaired so cheap.
 A hinge still swings, a shelf still stands,
 Built by tried and skilful hands.
 Though lights go out and doors may stop,
 Leiston remembers that favoured shop
 Buying on line is much our fault,
 We piled high the carts, we clicked "default."
 We chased all deals at half the price,
 And ignored the warning signs—once, twice.

AB & AI

HOLY TRINITY – MIDDLETON CUM FORDLEY

Church Services during June

Sunday 14 June

11am Poetry and Pastries

Please join us for the first Poetry and Pastries of the Summer. Whether a regular or giving it a go for the first time, you will be warmly welcome. Simply come along with a poem, a prayer, some prose or perhaps a piece of music you have found inspiring and that you would be happy to read/play aloud (or have read on your behalf) and, along with coffee and a croissant, we will sit together around a table and share these.

Sunday 28 June

11am Holy Communion

 and, please, do pop in during the Open Gardens weekend 

The Benefice Service this month will take place at 10am on Sunday 7th June at St Peter's, Theberton

Upcoming Events at Holy Trinity Church

Save the date!

- **Saturday 20 June, 7pm, Jorge Jimenez violinist with harp accompaniment (see poster below)**
- **Sunday 5 July, 2pm, Peter Berry talks on Living with Alzheimer's**

The Holy Trinity APCM took place on Thursday 14 May. There was no change to the PCC which comprises:

Rita Pateman (Church Warden) [tel: 01728 648377](tel:01728648377)
David Burgess (Treasurer)
Michael and Jenny Hemming
Camilla Sim (Electoral Roll)

Amanda Taylor (Secretary)
Paul B Taylor (PBT)
Margaret Taylor
Paul Taylor(Elder) (ex-officio)

Rob Buxton continues to look after safeguarding though not a member of the PCC



Holy Dusters 

3 June - Paul and Amanda

17 June - Rob

1 July - Camilla and Val

15 July - Trish and Graham

12 August – Christine & David

New dusters always welcome, of all faiths and none

Thoughts for the Month

“Glance at the sun. See the moon and the stars. Gaze at the beauty of the Earth's greenings. Now, think.”

**‘There is the music of heaven in all things.’
Hildegard of Bingen**

Presentation from Hannah Tuckwell of The Nest Farms

Hannah Tuckwell from The Nest Farms gave a detailed presentation at the Parish annual meeting on 13th May, about the potential for establishing a site in Middleton, to support young people. Over 40 people attended the meeting and there was an overwhelmingly positive response to her plans. The slides from her presentation can be found [here](#). (Reproduced for those receiving paper copies.)

We recognise that we need to ensure there is a further opportunity for everyone in the village to make their views heard and we would welcome views from anyone about the potential for The Nest Farms establishing a new site in Middleton. Please email parishclerkmiddleton@gmail.com with any questions, comments or concerns. So far, there appears to be real support for, and interest in volunteering to support, The Nest's plans. At the end of her presentation one local said "if this were to happen, we should be incredibly proud of having an operation like The Nest in our village" which seemed to sum up the general feeling on the night.

Giles Piercy
07710 381 436

Why is a second site is needed?

- Demand (at capacity in Framlingham)
- Reduce travelling time
- Save Council / schools money on transport.
£19m spent on SEND transport in 2025
- Looking in W. Suffolk / S. Suffolk
- Lack of YP provision
- Sizewell Impact

We are trying to create more early support and prevention so young people do not reach crisis point.

The need for youth mental health support

In 2023, nearly one million children and young people were referred to Child and Adolescent Mental Health Services.

It has been found that 1 in 4 children aged 8-25 has a probable mental health disorder causing persistent absence in school.

Around 10,500 children and young people in Suffolk are estimated to experience emotional disorders such as anxiety and depression, reflecting increasing concern around young people's mental health both locally and nationally.

About The Nest Farms

- Est. 2023
- Ages 9-25
- Day Placements
- YP unable to access full time education or employment due to MH.
- Self Harm, Anxiety, Trauma, Intrusive thoughts, OCD, Disordered eating, low mood etc.

Requirements

Paddocks: 10 acres Split into 6-10 paddocks

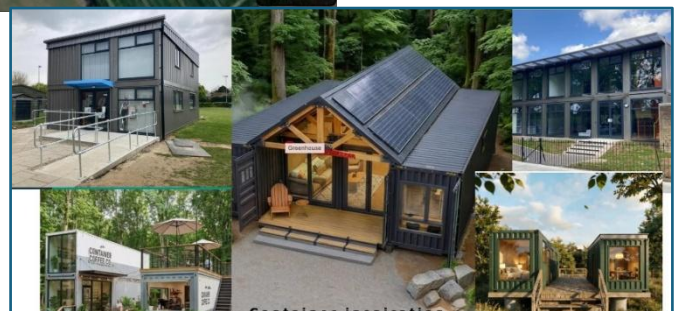
Field Shelters: 4-6 12ftx12ft

Polytunnel: 1-2 approx 24ft x 60ft

Stable Block 6 stables for lambing etc.

Ag Barn

Nest Central building.



Safeguarding and management

The young people we support are vulnerable young people experiencing anxiety, trauma, depression, isolation, and related mental health challenges. They are supported by trained staff within structured programmes

Benefits to young people and the community

- Supporting local young people and families
- Preserving and improving an SCC-owned site
- Volunteering opportunities
- Community gardening projects
- Educational partnerships
- Reduced pressure on crisis services
- Improved wellbeing in the wider area
- Produce available / veg boxes

When and who

Operational Days_____ 3/4 per week

Mon-Wed 8.30-4.30

YP Mon-Wed 9.30-3.30

YP's _____ 15 per day

Staff _____ 5 per day

Volunteers (3-5) _____ 3 per day

Visitors _____ 2 per day

Staff and Volunteering Opportunities.

- Daily volunteers working with YP
- Skill based volunteers - gardening, building, woodwork, cooking, maintenance, art etc
- Animal care volunteers

- Administration
- Operations
- Mental Health
- Farm

• Traffic

- Expected vehicle numbers
- Staff parking arrangements
- Drop-off plans
- Some Taxis Included

• Environmental considerations

- Biodiversity Improvements
- Gardening and conservation work
- Low-impact land use
- Sustainability measures

• Noise

- Typical activities are low-impact
- No large events
- Quiet operating hours



A Charity Supporting
**YOUNG PEOPLE'S
MENTAL HEALTH**

www.thenestfarms.org

Redundant shed

Now the new container is in place on the playing field MCC no longer have a need for the green metal shed that once was (mainly) the cricket and croquet equipment shed. If anyone would like it (we know of a couple of potential customers already) please feel free to make us an offer by the end of Open Gardens weekend and it will go to the highest bidder. middletoncommunitycouncil@gmail.com

Wanted : Vauxhall Zafira 1600cc - petrol 2006/7 Reg. with long MOT V5 Tax

OR : Fiat Diablo 1400cc.

If you can help please phone David on 07758 687080

Buy the Bell

Middleton's community pub

We're delighted to say that progress is being made, behind the scenes to take forward the villages initiative to Buy The Bell. A great piece of news is that an anonymous donor has agreed to match donations and shares from the community up to £200,000. This is an amazingly generous offer and really helps us to get our fundraising off to a great start.

Adnams have revalued the pub at £425,000 (the previous valuation was £450,000) – we have commissioned our own valuation which will be completed shortly and we're currently chasing the latest income and expenditure information. Adnams are going to market the pub to other prospective buyers, although they cannot sell the pub to anyone else before the 20th September, so this will give us an idea whether there are any other interested parties. The negotiation has started! We think we will probably need to raise £450,000, including funds to run the pub until we can look to make improvements and increase income. More information will follow over the next few weeks.

We've also been busy talking to Plunkett Foundation, Pub is The Hub and other community run pubs to understand best practice and the best way forward for us.

Your new Buy The Bell Steering Group comprises: Barbara Barker, Graham Broadbent, Ashley Brown, Tim Davies-Pugh, Peter Fairbrother, Colin Fisher, Michelle and Rob Kendall, Anne and Julian Molyneux, Brian Near, Kathryn Rowe, Gillian Stacey, David Stimpson, Andy Wood. We met last week and agreed the following activity:

- To agree a draft Community Benefit Society (CBS) constitution and send it for registration. We have been exploring registering our CBS as a charity as well – only one other pub in the country has done this but we think we can. If successful, this means that donations (not community shares) can be increased by 25% (if the donor is a UK taxpayer), and higher rate taxpayers can claim the difference between their tax rate and the basic rate of 20% in their tax return. Donations and community share purchase funds can both be used to buy the pub, but only shares will give you a vote in how the pub is run in the future as a member of the CBS. You can donate and purchase shares. We can't apply for charitable status until the CBS is set up, so it all takes time, and the charitable status is not guaranteed (so fingers crossed we can make this work). Full details will be available in the share prospectus when completed.
- To agree who from the steering committee will become the initial Directors of the CBS.
- Write a business plan, using the finance information when received from Adnams.
- Start developing our fundraising and marketing strategy, including designing a new website, pulling together the materials including the share prospectus, donation guide, promotional materials, social media and online fundraising platforms plus sponsorship opportunities.
- We're also planning some exciting events and other opportunities to get involved – watch this space.
- Open a new bank account – which we can't do until the CBS is registered.

We'll be setting up regular email newsletters from one address soon, to ensure that we can keep the communication channels open effectively.

What can I do to help?

There'll be plenty of opportunities for volunteer at our events, deliver leaflets and generally drum up support - we'll be actively asking for help. More specifically:

- Think of how many shares you can buy or a donation amount you can give. If you are considering offering a major pledge (more than £5,000) to purchase shares or make a donation please let one of the steering committee know or contact Gillian on the email below (this is just a pledge as full details will be available in the share prospectus and donation guide). Remember - we will need people who can do to commit to higher level of support if we are to achieve our goal.
- Who else can you also ask to buy shares (family, friends, colleagues) – if everyone that buys a share gets 10 other people to buy shares or donate, this will really help us to achieve our target.
- Do you know anyone that might be interested in making a major donation or purchase of shares?
- Would your employer, or business contact be interested in sponsoring our materials, donating or potentially promoting our cause to their customers?
- Are you a business owner yourself and would be able to sponsor our materials or make a donation?
- Is there anything else you could contribute – something for a raffle or special prize?

We're aiming to have an idea of major pledges by the end of June for the official public launch in July – we'll keep you updated. **We'll also hold another public meeting at the Village Hall on Friday 26th June 7pm, where we will go through what's planned in detail – so keep this date for your diary.**

If you need more information, or wish to discuss any opportunities in the interim please contact Gillian at middletoncommunitycouncil@gmail.com or talk to a member of the steering committee.

Gent – retired, from Middleton area needs a cleaner - also some housework, self-employed for 3hrs per week. Chq paid. From the Middleton area only.

Phone (daytime) 07706859290

June Nature Notes

The blue butterflies are among the most stunning insects to be found in the British countryside. The sight of thousands of Chalkhill Blues, Adonis Blues, and other species flying over a chalk grassland in mid-summer, is surely one of Britain's great natural spectacles. Blue butterflies belong to the subfamily Polyommatinae, with nine resident species in Britain. Of these, only six can be found in Suffolk, and four, the Common Blue, Holly Blue, Silver-studded Blue and Brown Argus are local to Middleton. The two other species are restricted to a single colony: the Chalkhill Blue, which is barely surviving in West Suffolk, and an introduced population of Small Blues in an Ipswich park.

The name 'blue' can be confusing, as some species show strong sexual dimorphism (in which males and females look very different), with females predominantly brown. In some species, neither sex is blue at all. Most, but not all, blue butterflies have a close relationship with ants, a phenomenon called myrmecophily. In this subfamily, the larvae produce a sweet secretion from a 'honey' gland, which is a food source to ants. The ants are attracted to this and tend to the larvae, who, in return are offered a level of protection from potential predators and parasites.

The Common Blue, as its name suggests, is our most widespread blue. The name does not do justice to the beauty of freshly emerged males, which are a striking blue. Females can vary in appearance, but they are usually brown, with a touch of deep blue near the wing base, although this blue can extend over most of the upperwing. All females have orange spots along the edges of the upper wings. The Common Blue's wide distribution reflects its larval host plant, predominantly bird's-foot-trefoil.

The first blue butterfly on the wing each year is the Holly Blue, as early as April, and, the most likely to be encountered in gardens. At a glance, it could be mistaken for a Common Blue, but seeing the underside of the wings will allow for easy separation. The Holly Blue has a pale, silvery underside with fine black spots, and lacks any of the orange spotting shown by the common blue. The spring generation predominantly lay their eggs on holly, hence the name, and can be seen into early June. However, the summer generation lay their eggs on ivy, so 'ivy blue' would be just as appropriate.

The Silver-studded Blue gets its name from the metallic blue-green 'studs' found on the underside of the hindwings, just beyond the orange spots. They are found predominantly on heathland and coastal sites, where eggs are laid on heathers and gorse, and are one of the few butterfly species that Suffolk has nationally important populations. During June and July Silver-studded Blues are reasonably common on the Suffolk Sandlings, with a strong colony present on nearby Westleton Common. Silver-studded blues appear to require the presence of black ants to complete their life cycle. The ants tend to and protect the caterpillars in return for sweet secretions. Caterpillars are readily collected and taken into the ant nest, and there is evidence to suggest that the ants may even transport the caterpillars between the nest and their foodplants - in effect, farming the caterpillars.



Although part of the 'blue' family, the Brown Argus shows virtually no blue at all, though males can have a slight sheen in certain circumstances. They look very similar to a dull female Common Blue, although slightly smaller. The Brown Argus is found in open habitats where they lay their eggs on various wild geranium species.

Peter Vincent

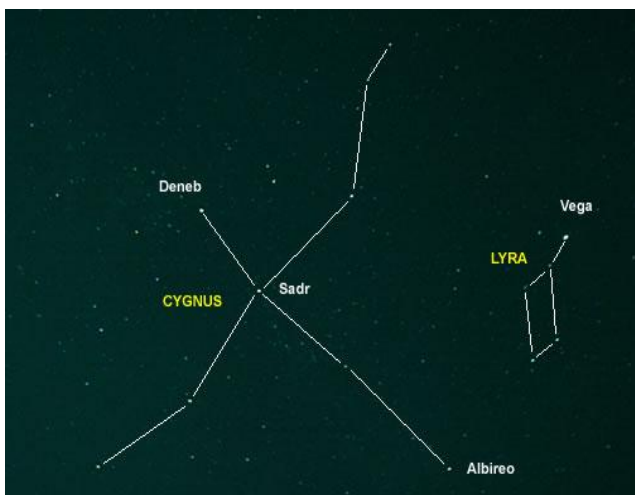
Apologies for the 'lost in translation' photo of the Bumble bee in last month's nature notes!

Middleton Dark Skies

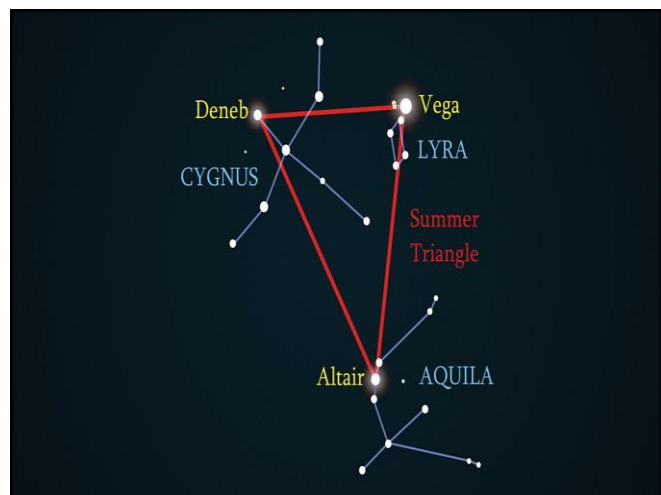
June Highlights

Planets on View. One rare event occurs on the 9th of the month, where **Venus** and **Jupiter** sit very close together in the western sky (known as a conjunction), clearly visible before sunset, with both setting just around midnight. Venus is by far the brighter of the two, but Jupiter still outshines any of the stars. The two stars sitting to the right and slightly above the two planets are the main stars of the constellation of Gemini, Castor and Pollux. Also, look out on the evening of the 17th when Venus and the crescent Moon are less than a degree apart. **Mars** finally reappears during the month, albeit in the early morning twilight at around 3 am. One planet that is not normally covered here, as it is quite a challenge to spot unaided, is **Mercury**. On the 16th it will be sitting immediately below and close to a thin crescent Moon. As the western sky darkens, perhaps from 10 pm onwards, it will be worth a look through binoculars or a small telescope to try and spot this elusive little planet. **Saturn** rises in the eastern sky at around 2 am, but slowly disappears into the pre-dawn sky.

Constellations With the lighter evening skies this month, it will be difficult to see many stars much before 10 pm, so the best observations will be made looking overhead or out to the east. One of the easiest constellations to spot will be **Cygnus** (The Swan) which, at 10 pm, will be sitting high up in the Eastern sky. If the sky is dark enough you may be able to see the Milky Way, which runs through Cygnus, from one end to the other. Just to the west of the 'head' of Cygnus, is the small, but distinctive, constellation **Lyra** (The Harp). It consists of five/six stars that form the shape of a harp. The brightest of these stars, Vega, is the 2nd brightest star in the northern hemisphere, lying some 25 light years away. Due to the changes in direction of the Earth's axis, every 25,000 years or so Vega becomes the Pole Star, around which all stars in the Northern Hemisphere appear to rotate. Vega is also one of the three bright stars that make up the 'Summer Triangle', the others being Altair in Aquila and Deneb in Cygnus. In Greek myth, Lyra is the lyre that belonged to Orpheus the musician, and when played could enchant wild animals, trees and, for whatever reason, rocks!



Cygnus and Lyra.



The Summer Triangle

The Moon. Going by the name of Rose Moon or Strawberry Moon this month, after the blooming of roses and the first strawberries of the season. Look out for the crescent Moon on the 17th sitting just 1° away from Venus. This month's full moon occurs on the 30th.

Meteors Unfortunately none of any note this month

Brian Near

MIDDLETON CUM FORDLEY PARISH COUNCIL
MINUTES OF THE ANNUAL PARISH COUNCIL MEETING HELD
ON WEDNESDAY 13 MAY 2026 AT 7.10pm AT THE VILLAGE HALL

"Please note that the Parish Council will be pleased to consider adding additional items suggested by residents to future agendas. If you would like to make such a request or contact the Parish Council on any other matter, please do so via the Parish Clerk on clerk@middletonparishcouncil.gov.uk".

1 Election of Chair. A Chairperson was not elected. Cllr Steve Thorpe signed a Declaration of Acceptance of Office for the period 13 May 2026 to 10 June 2026. Councillors will be elected monthly until the role of Chairperson is filled. A Declaration of Acceptance of Office will be completed each month, as advised by SALC (see MPC Minute 13, Correspondence, Wednesday 11 March 2026).

2 Election of Vice Chair. A Vice Chairperson was not elected.

3 Attendance and Apologies

Attendees:

Cllr Steve Thorpe (acting Chair)
Cllr Charles Macdowell
Cllr Giles Piercy
Cllr Kathryn Rowe
Cllr Chris Reynolds
Cllr Ian Widginton
Cllr Michele Kendall

Apologies:

Cllr Julian Cusack

In attendance:

Parish Clerk
Members of the public x 5

4 Councillors' Declarations of Interest. None.

5 Public Forum. A MoP enquired about signs for the Moor in relation to SZC traffic. Cllr Thorpe confirmed that this is an ongoing matter. It was also noted that the white lines and cats' eyes, that were due to be installed three weeks ago, have not appeared.

6 Minutes

a) The Council approved the minutes of the Parish Council meeting held on 8 April 2026.

b) Matters Arising and Action Points

* Cllr Piercy confirmed that the contents of the slurry pits are to be taken away. SCC have also been advised of the underground tanks on site, but MPC are yet to receive a reply.

Action: Cllr Piercy to chase.

* The loan of the SID has been arranged with Westleton Parish Council. Next step is to find a location on the B1125. Once the pole is erected the device can be installed. Cllr Thorpe is meeting with the Chairperson of Westleton Parish Council for a lesson on using the SID and obtaining data.

* Claim form, Rural Payments Agency c/f.

* Internal Controls document is on the village website.

* The Bell Inn ACV is now in the hands of a stirring group, separate to MPC.

* MPC planning application responses have been added to ESC Planning Portal.

* Cllr Thorpe to write to Hastoe Housing Association re: 14 dwellings application c/f

* Cllr Thorpe has received a quote to replace the door of the broken noticeboard by The Bell Inn. Two other quotes were sought but not received. It was agreed to go with the quote received for £285.00. **Action: Cllr Thorpe to organise.**

- * A suitable bench has been sourced (Nelson Potter), and this information has been provided to the MoP who has requested a memorial bench at the recreation ground. **Action: Clerk to enquire whether a plaque is to be added.**

7 Sizewell C and other Energy Projects. Cllr Macdowell is in the process of collating the latest information/works that are scheduled to take place over the summer and autumn, including a program of works along the B1122; white lining, friction surfacing and tidying vegetation. This schedule will appear in the village newsletter. The meeting was reminded of the two websites available for residents to keep up to date; The SZC Works Tracker and SCC's One Connect.

The Lionlink consultation looked at two alternative routes, one running alongside the new SLR and the other would take an entirely new route. MPC submitted a preference to the first option, as it is thought this would be less disruptive.

A MoP advised that Lionlink archaeologists are currently working on their land and that staff have been respectful and that it has been a good working relationship.

8 Councillors Reports

- Village Hall. The issue of landscaping and maintaining the garden to the back of the hall was raised again as still outstanding. It was confirmed that contact has been made with SCC about extending the car park and that the parish council are custodian trustees of the hall.
- Middleton Primary School. Nothing to report.
- Highways, footpaths and trees. Cllr Thorpe is in possession of plans for new footpaths on the B1125. **Action: Cllr Thorpe to furnish the clerk with the footpath plans. Action: Clerk to upload footpath plans to village website.** Comments from village residents are welcome.
- Middleton Moor. A MoP commented that between Middleton Moor and the new roundabout (yet to be built) there should be a width restriction because HGVs are parking in available laybys waiting for their delivery slots. If there is no restriction to traffic flow entering the village HGVs will continue to use the B1122. It was asked that this matter be raised with SCC. Cllr Macdowell confirmed that, following the latest northern transport forum, a meeting has been requested with both SCC and SZC to specifically cover post-SLR issues and that he will add this to that agenda.

Village Website

Cllr Thorpe raised the village website as an area that could be better utilised. Cllr Widginton will liaise directly with Barbara Barker to increase the content. Cllr Piercy offered to provide the Clerk with Causeway Farm and The Bell updates to put on the village website. **Action: Clerk to contact Hugo Fox for numbers relating to visitors to the site.**

9 Finance

- The latest financial position was received and accepted by all.
- Bank Reconciliation for Q4 2025/26 was received and accepted by all.
- The following payments were authorised.

Details	Payee	Amount	Power
SALC Annual Membership 26/27	SALC	£257.43	LGA 1972 s.143
Overtime 10 hours	Parish Clerk	£202.86	LGA 1972 s.112

- The Community Infrastructure Levy Statement for the financial year 2025 – 2026 was approved and signed off. **Action: Clerk to send to ESC and upload to village website.**

The meeting was advised that the parish council will be subject to an external audit this year, as well as the usual internal audit due to the SZC Community Grant received earlier this year, taking our income over the £25,000 limit for external audit exclusion.

The clerk, as primary user on the PC accounts, reported that the remaining SZC funds (approx. £30,000) have been transferred from the PC current account to the savings account, as agreed at the Trust Meeting on Wednesday 11 February 2026 (see item 5, SZC Community Fund).

The clerk has made an application to HSBC, on behalf of MPC, for a debit card (see MPC meeting 11 March 2026, minute 9 Finance).

It was also confirmed that the hire cost of the village hall is increasing from £20 per session to £25 from 1 June 2026.

- 10 Correspondence.** MPC are in receipt of correspondence from a village resident regarding two issues; firstly, the emptying of bins, or rather the lack of. The clerk has written to East Suffolk Services seeking a solution to overgrown hedges preventing the refuge vehicle from accessing the lane. Currently awaiting a reply. Secondly, the impending closure of the local telephone exchange. It is thought that this is misinformation given to the resident by Sky. **Action: Cllr Thorpe to supply the clerk with a suitable response to the resident.**

An enquiry was made regarding SZC/Archaeological finds that have been exhibited at Yoxford and Theberton village halls. It was agreed that an exhibition at Middleton village hall would be well received. **Action: Cllr Macdowell to make enquiries.**

- 11 Items for Next Agenda.** Approve/sign off the AGAR / year end accounts.

- 12 Next Meeting.** The date and time of the next meeting is scheduled for Wednesday 10 June 2026 at 7pm, at the Village Hall.

The meeting closed at 7.50pm

**MIDDLETON CUM FORDLEY PARISH COUNCIL MEETING AS SOLE TRUSTEE OF
THE MIDDLETON RECREATION GROUND TRUST
MINUTES OF THE MEETING HELD ON WEDNESDAY 13 MAY 2026
AT 7.55pm AT THE VILLAGE HALL**

1 Attendance and Apologies

Attendees:

Cllr Steve Thorpe (acting Chair)
Cllr Charles Macdowell
Cllr Chris Reynolds
Cllr Kathryn Rowe
Cllr Michele Kendall
Cllr Giles Piercy
Cllr Ian Widgington

Apologies accepted for absence:

Cllr Julian Cusack

In attendance:

Parish Clerk
Member of the public x 1

- 2 To receive declarations of interest and to consider requests for dispensations.** None.

3 Minutes

Minutes approved of Trustee Meeting held on 13 April 2026.

Matters arising. See Minute 6 below.

- 4 To review Safety Inspection Report.** No report received.

- 5 Recreation Ground Update.** The adult gym equipment and goal posts have been installed and used. The children's play equipment is currently being installed, with completion next week. The container was installed today.

A grand opening, organised by the Pavilion Manager, is scheduled for Saturday 30 May in the afternoon and helpers are needed (details in the village newsletter).

Thanks were made to Cllr Reynolds for his work involved with the recreation ground.

6 Pavilion

- a) Fire Safety Update. Following an inspection by Fire Protection Online the clerk is in receipt of a quote for new fire extinguishers/blanket, signs and installation in the sum of £199.75. This was agreed. **Action: Clerk to make payment.**
- b) Marketing plan for Pavilion. No update.
- c) Pavilion cupboard. The clerk has not received any response regarding the advertisement for the building of a cupboard in the pavilion. Cllr Widgington is aware of a village resident who may be willing to undertake this task. **Action: Cllr Widgington to make contact and take forward.**
- d) Solar Panels/British Gas. The clerk reported that Octopus rates are higher than the British Gas rates that we are currently paying. She has been unsuccessful in obtaining a non-generic quote from Octopus, that considers the infrequent use of the pavilion, making an informed decision somewhat difficult. In the meantime, the clerk continues to chase British Gas to get the solar panels connected to our account (it is MPC's understanding that the smart meter cannot 'manage' the solar panels, in which case, British Gas need to replace with an appropriate one). To recap MPC were put on a new plan with British Gas, that started on 19 January 2026. This lowered our costs to approximately £25 per month (£40 previously). 43.01p standing charge per day and 27.83p per kWh. Octopus have quoted a monthly cost of £43; standing charge of 59.88p per day and 25.01p per kWh. **Action: Cllr Widgington to pursue Octopus further for a tailored quote.**

MIDDLETON CUM FORDLEY ANNUAL PARISH MEETING

MINUTES OF THE MEETING HELD ON WEDNESDAY 13TH MAY 2026
AT 6pm AT THE VILLAGE HALL

Attendance and Apologies

Attendees:

Cllr Steve Thorpe (acting Chair)
Cllr Charles Macdowell
Cllr Chris Reynolds
Cllr Giles Piercy
Cllr Kathryn Rowe
Cllr Michele Kendall
Cllr Ian Widginton

Apologies for absence:

Cllr Julian Cusack

In attendance:

Parish Clerk
Members of the Public x 30+

Presentation – The Nest, is a farm, located in Framlingham, that supports young people aged 9 to 25 who are unable to access full-time education or work due to mental health challenges. The provision is hoping to extend to Middleton, and a presentation was given to residents and MPC on what this would look like. Information included the proposed area of land (Mill Street), building types, number of staff and attendees, opening times and activities that would take place. The presentation was well received, with staff from The Nest inviting visitors to their Framlingham farm to see firsthand what takes place and to obtain an idea of what such a setting in Middleton might look like.

Contact details

The Nest Farm
Kettleburgh Lodge Farm
Framlingham IP13 9RY

tel: 07774 663358
email: hannah@thenestfarms.org

Annual Reports

It was confirmed that the following Reports had been received and circulated to the Parish Council.

Middleton-cum-Fordley Parish Council taken as read and attached as Appendix A
Middleton Community Council taken as read and attached as Appendix B
Middleton Village Hall taken as read and attached as Appendix C
Holy Trinity Church taken as read and attached as Appendix D
Middleton Moor Management Group taken as read and attached as Appendix E
Middleton Newsletter taken as read and attached as Appendix F

The reports will be printed in the village newsletter and will be put on the village website.

It was noted how fortunate the village is to have the above groups and the valuable work that they do.

APPENDIX A

Middleton-cum-Fordley Parish Council Annual Report 2026

Sizewell C

An ongoing situation (and for many years to come). The PC works with the Community Liaison Team at SZC representing the village. Both Cllr Macdowell and I attend the forums held throughout the year and press for improvements to the quality of our environment – not always successful given the hiding of SZC behind the DCO.

We opposed the joining of the B1125 to the SLR and supported the B1125 Action Group in their attempt to save the Middleton oaks and later the ‘rat running’ down the B1125, along with the argument against the B1125 SLR link (Theberton bypass). We have represented Middleton Moor in the attempt to stop HGV drivers using laybys as toilets, with some success in having notices erected. We have represented, successfully, the removal of plans for unnecessary footpaths on the B1122 and B1125 but encourage other ‘necessary’ footpaths elsewhere.

Planning

The PC continues to respond to applications that are raised and have worked to the best of our ability to agree or disagree to applications that benefit the surrounding of our village. Notably, the latest application for the land known as the Hastoe Field (the breakup of Causeway Farm) has been opposed as the scale of proposed building is not in keeping with the village and does not take into account the existing residents of the newly built Roke Drive.

Lionlink

Again, with other energy projects the PC has made input into the discussions with the Lionlink proposal. Both Cllrs Macdowell and Widginton have been representing the PC at presentations, and we will continue to input as we can. The DCO for Lionlink has not yet been approved but it does appear that the route will be going through our parish, across the Moor and surrounding lands.

Causeway Farm

The tenant vacated the farm earlier this year and proposals have been put forward by SCC as to the use of the land. One option is a SCC approved alternative provision provider for children and young adults, on the part of the field next to the village hall. Other parties are also interested in purchasing segments of this field, indeed perhaps enlarging the village hall car park would be a very useful addition for the community.

We have touched on housing on Hastoe Field and whilst plausible and always seen as an option, the extent of housing is not welcome. Causeway Farm itself will be developed with limited housing on the footprint of existing structures. We are also aware that Suffolk Wildlife Trust are interested in the marsh land, and we welcome this.

Finances

The PC receives income mainly from Council Tax and the Community Infrastructure Levy, otherwise known as CIL. The CIL is levied at the end of March each year. As you will see from our CIL Report the total income carried over from previous years was £3,751.78 and we spent £3,135.00, leaving us with a retained £616.78. The expenditure was for the new path that had been requested to the village church.

Recreation Ground Trust

The pavilion and play equipment have been given a new lease of life by the award from SZC of just over £110,000, as part of the SZC Community Fund. We have solar panels installed and adult, as well as new children’s play equipment fitted or about to be fitted. Special thanks for the hard work involved must go to the Cllr Piercy on this account.

Middleton Moor

The PC continues to meet with the Moor Committee to discuss the husbandry of the Moor. The maintenance of the pond near Norwood House continues and we are most grateful to resident Ashley, for his continued involvement to the benefit of the environment on the Moor.

The Bell

Obviously, there is great concern within the village at the selling of The Bell by Adnams. Its loss as a pub would deal a heavy blow to the village. We are therefore backing the assistance of Gillian and Tim along with Andy in preparing the campaign to potentially purchase the pub on behalf of the community.

Councillors

Thank you to all our councillors for their commitment to the PC this year. Cllr Reynolds for his work with the Village Hall and Pavilion. Cllr Kendall for her input and communication with the Church and Village School. Cllr Rowe who has supported many events on behalf of the PC and canvassing support for the playing field play equipment. Cllr Macdowell for all matters SZC and other energy projects. Cllr Piercy for Causeway Farm and the Recreation Ground/SZC Community Grant. Finally, our combined thanks to our parish clerk who has done so much and beyond with her commitment to the PC this year. We all value your assistance in keeping us on track. Sometimes it is not acknowledged the amount of time and effort that goes in and effects normal life at home or work or both. A thankless task, perhaps!

Finally, our Chair, Cllr Cusack is stepping down. It has not been a good year for him since February for his own health and subsequently his wife. Our best wishes go out to him, and we thank him for all his hard work over the year and indeed, previous years.

Cllr Steve Thorpe Vice Chair

APPENDIX B

Annual Report of Middleton-Cum-Fordley Community Council 2025/26

This year has been very positive with lots of community involvement at every event we have organised, along with monies contributed to chosen causes. We have had a mixture of larger fundraising events, such as the Summer Fete and Autumn Fayre and many community engagement activities, organised for the well-being of the village and residents. This year, as MCC representatives, we also aided the Recreation Ground Trust to secure a large grant from SZC community fund and have recently voted to support the purchasing of The Bell as a Community Pub.

Our VE Day Street Party in May was a slightly cold, but well attended affair with 50 plus villagers bringing a selection of cakes and savouries to share, many having used recipes from the 1940's.

The Midsummer Quiz was, once again, held on the playing field and hosted by Quiz Master Peter Vincent. The change of time to the afternoon saw a similar number of teams, but with a wider age-range of quiz goers and picnickers.

The July boules competition was another success, attended by those locally and from afar with ages ranging from 12 to 88 years! Archie and Rebecca Reynolds were awarded the first prize Cockerel trophy.

The Summer Fete took place once again on the village's fantastic playing field. The Fete had a wide selection of food and drink on offer, many village stalls and games staffed by local volunteers. Silmor entertained us with live music and the Dog show arena was a constant hubbub of activity; the Human Fruit machine was a roaring success and The Cooke family were awarded the Chairman's Plate for their outstanding contribution to community life. The event was a great triumph and raised over £2,000 to support other community initiatives.

The Autumn Fayre was held in October at The Bell. The Random Blues Band entertained everyone from the barn, but due to the windy weather, most of the activities were inside The Bell. It was a squash at times, but plenty of fun, food (including the now famous venison stew) and games. Percy Reynolds was the winner of the Apple Pie Award and Kerry Bayford the Queen of Conkers.

Remembrance Sunday saw a wreath laid on behalf of the Community Council.

We celebrated St Edmund's Day at The Bell with a Literary Evening, where everyone was invited to bring along a piece of poetry or prose in English. It was a delight to hear such a wide selection from around the parish and beyond. This has also resulted in enthusiasm for a similar evening next November.

Santa Boules in early December was a busy affair, with plenty of festive competition. Paul Forster and Barbara Barker took first place.

A Christmas meal and entertainment was held at the Village Hall with 48 enjoying the evening. The organisation and food were fabulous and the homegrown entertainment made everyone laugh, sing and generally feel very festive – it was certainly an evening that won't be forgotten easily. This year the proceeds of the raffle went towards The Blossom Appeal.

The talk by Chrissie Beveridge about Life on a Film set was very well attended with over 50 coming to hear fascinating stories and ask questions about Chrissie and her role as a make-up artist.

A £100 Young Person's Bursary was awarded to Archie Reynolds towards the purchase of football boots and grip socks and every child/young person under 18, resident in the village, received a £10 voucher for Christmas.

Written on behalf of Middleton-cum-Fordley Community Council by Rebecca Reynolds.

APPENDIX C

Annual Report for Middleton-cum-Fordley Village Hall 2025-26

Maintenance issues continue to arise but are usually dealt with promptly.

There has been an ongoing problem with the ageing electricity pay meters so the second one has now also been replaced allowing greater flexibility in our charging rates to better reflect increasing bills.

The external Notice Board was rotten and dilapidated so that has been replaced.

New paper towel holders have been installed in the toilet areas.

Rising water bills were questioned by our newly appointed Treasurer and a leak was duly discovered in the disabled toilet. The problem was quickly resolved and the new Direct Debit charges now better reflect actual usage.

The rear 'garden area' was weeded for the Winter by a small working party. Another will take place in the Spring. Thanks go to Alan Giblin for maintenance of the car park hedges and weed control on the car park.

A professional reassessment of the value of our building and contents was recommended by CAS which has resulted in a more accurate valuation but higher premiums. Such is the nature of insurance!

Regular weekly activities continue with Pilates, Indoor Bowls, Art Sessions, Coffee mornings. There are monthly meetings of the Heritage Quilters and Parish Council and quarterly meetings of the Village Hall and Community Council Committees. These lettings and occasional quizzes in aid of the Village Hall, Community Council and School all contribute to our regular income to cover utility bills and maintenance, upkeep and improvement of services. A Village Hall November Quiz raised a grand total of £370 for Hall funds and a generous donation was made from the proceeds of an Autumn Craft Day organised by Lynda.

The Women's Institute managed to continue monthly meetings and talks throughout the year but reluctantly decided to call it a day after over 100 years. The Hall was originally built by their organisation and the generous patronage of Lady Hambling of Rookery Park and enormous village-wide fundraising support.

Our thanks go to our regular cleaner, Kevin, who has helped to maintain high levels of cleanliness.

Many thanks go to all members of the Village Hall Management Committee for their continuing support, advice and time. Particular thanks go to our outgoing Treasurer, Yvonne, who has retired after many years of excellent service. Also our Secretary, Barbara, who continues to efficiently arrange appointments with regular tradespeople and order replacement equipment with lightning speed and our new Treasurer, Colin, who has tackled electricity and water companies to achieve the best fixed deals and who, together, keep the administrative wheels and finances in good order.

Recruitment of new Committee Members and regular attendance at meetings remains an ongoing concern despite adverts in the Newsletter but is a problem experienced by many other communities and not confined to just Middleton.

Richard Turner, Chair, on behalf of the Middleton-cum-Fordley Village Hall Management Team, April 2026.

APPENDIX D

HOLY TRINITY CHURCH REPORT

2025/6

WE ARE PLEASED TO REPORT THAT ATTENDANCE NUMBERS HAVE INCREASED AGAIN SLIGHTLY OVER THE PAST YEAR AND THIS IS VERY TRUE OF THE POP UP BRUNCH AND POETRY EVENTS WHICH HAVE REALLY INCREASED AND ARE A LOVELY ADDITION TO CHURCH ACTIVITY. THANK YOU TO THOSE WHO ORGANISE THEM FOR US.

CONCERTS HELD HAVE BEEN VERY SUCCESSFUL AND AGAIN IT IS NICE TO USE OUR CHURCH FOR SUCH EVENTS. 2 IN 2025 AND 3 IN 2026 PLUS A TALK BY PETER BERRY 'LIVING WELL WITH ALZHEIMERS'

WE REMOVED A PAIR OF ISOLATED PEWS IN THE CHANCEL WHICH HAS GIVEN US MORE USEABLE SPACE FOR ALL THE EVENTS AND WERE VERY PLEASED THAT THE PEWS FOUND A LOVELY NEW HOME IN A PRIVATE HOUSE HERE IN MIDDLETON.

ALL THE TRADITIONAL EVENTS HAVE BEEN WELL ATTENDED AND WE LOOK FORWARD TO WELCOMING YOU TO THE FUTURE EVENTS.

THANK YOU TO EVERYONE FOR THE SUPPORT YOU GIVE TO OUR BEAUTIFUL CHURCH AND AS EVER ALL ARE WELCOME WHATEVER THEIR BELIEVE OR IF THEY HAVE NONE, THE DOOR IS ALWAYS OPEN.

Rita

APPENDIX E

MIDDLETON MOOR MANAGEMENT GROUP 2025-26

This Group met at Moor Farm in July 2025 because the Chairperson, Mrs Jane Etheridge, was in hospital. Ten residents attended as well as the Chairman of the PC Julian Cusack. The main points of discussion were as follows.

Residents expressed utter dismay and concern at the devastation of the area at the hands of SZC. The arrogance and mendacity of SZC reflected very badly upon the ethics of this enormous company and residents were not happy that they will have to suffer under the uncaring hands of this business for the next two decades. As one example of the attitude of SZC, a resident noted that the white lines in the middle of the B1122 in front of the cottages at Middleton Moor have never been restored. The same goes for the cats-eyes. Promises were made about their restoration but predictably nothing has happened. Littlemoor Road has been left full of dangerous ruts and potholes. The excuse that the road will be closed for good is no reason for the vandalism inflicted upon this lane which still has to bear traffic to Norwood House and the Tollgate. The state of the road is shameful yet nobody from SZC cares. Let us all hope that the workmanship for the nuclear reactors will be better than that afforded to our area.

There followed a spirited discussion regarding the establishment of an unauthorised track across the northern part of the Moor. This track was allowed by the PC despite there being no public discussion.

Residents expressed their deep unhappiness at the state of the pond. Contractors engaged by the PC worked on the pond for three days later in 2025 but it would appear that there is no discernible improvement and the island

of willows has enlarged considerably. Residents expressed their lack of confidence in the management of this precious asset.

In early 2026 it became obvious that SZC lorry drivers were starting to use the laybys at Middleton Moor and adjacent to the Garden House as lavatories. Some drivers also enter nearby private land to empty both bladders and bowels. Representations have been made to SZC to have this practice stopped. No Parking notices for SZC vehicles have been erected but these have largely been ignored by SZC drivers. Suffolk Police have been alerted to these practices.

APPENDIX F

Newsletter Annual Report 2026

The newsletter continues to be published 11 times a year with just a break after Christmas with approximately half of households receiving a paper copy and half the electronic version, which does halve publication costs. Without this split it would not be viable to publish in colour .

We have been fortunate to receive several extra financial donations this year - from the folding WI, the arts and crafts group, and a bequest from the late Jimmy Adams . Sitting alongside the regular contributing organisations such as the Parish Council , Community Council , the PCC and many individuals leaves us in a healthy financial position for now. Thank you to everybody who contributes - however often or however small - as it is all on a donation basis.

I must thank my stalwart team of deliverers who trudge their respective roads with our newsletter and The Yoxmere Fisherman come rain or shine . Without them I would probably spend all weekend delivering !!

Thanks also to my guest editors and distributors who step in when I am away.

Last but not least thank you to those who send in items for publication as without you there would be no magazine.
Barbara Barker

DON'T FORGET



Changes to your garden waste collection day from 1 June 2026

The new Better Recycling and waste collection service starts in East Suffolk on 1 June and as part of this new service, there will be changes to your collection day for garden waste.

From 1 June 2026, your collection day will be as follows:



Tuesday 2nd , 16th , 30th June
Tuesday 14th July

We are therefore providing a two-week extension to your subscription to ensure that a full 26 collections are made throughout the year, as per the conditions of your agreement.

Recycling and general waste collections

In May, you will receive a printed calendar showing your collection days for general waste (black lid), paper and card recycling (green lid) and glass, cartons, cans and plastic containers (blue lid). You will also receive a detailed information pack explaining what items can go into each bin from 1 June.

DIARY DATES 2026

May

Saturday 30th Sports and Social Day - Playing field – **1pm**

June

Thursday 4th "Squit Night" – live music at The Bell – from **8pm**
Saturday 6th Vinyl Night at the Bell from **6pm**
Sat/Sun 6th /7th Open Gardens
Sunday 7th Open Farm Sunday Nonsuch Farm **11- 2pm**
Sunday 7th Benefice Service at St Peter's, Theberton **10am**
Wednesday 10th Parish Council Meeting , Village Hall, **7pm**
Friday 12th Charity Cream Tea afternoon Middleton Bell **2-4pm**
Sunday 14th June **11am** Poetry and Pastries, Holy Trinity
Saturday 20th Concert by Jorge Jimenez – violinist – in church **7pm**
Saturday 27th MCC midsummer quiz Playing field **6.30pm**
Sunday 28 June **11am** Holy Communion
Tuesday 30th Procrastiknitters – Village Hall from **2pm**

July

Thursday 2nd "Squit Night" – live music at The Bell – from **8pm**
Sunday 5th Peter Berry talks on 'Living with Alzheimer's' **2pm** in church
Wednesday 8th Parish Council Meeting , Village Hall, **7pm**
Saturday 11th Summer boules open tournament, Playing Field **10am**
Tuesday 28th Procrastiknitters – Village Hall from **2pm**

August

Thursday 6th "Squit Night" – live music at The Bell – from **8pm**
Saturday 29th Annual Village Fete - Playing Field **2pm**

September

Thursday 3rd "Squit Night" – live music at The Bell – from **8pm**
Wednesday 9th Parish Council Meeting , Village Hall, **7pm**
Saturday 19th Vinyl Night at the Bell from **6pm**

October

Thursday 1st "Squit Night" – live music at The Bell – from **8pm**
Saturday 10th Autumn Fayre
Wednesday 14th Parish Council Meeting , Village Hall, **7pm**

November

Thursday 5th "Squit Night" – live music at The Bell – from **8pm**
Wednesday 11th Parish Council Meeting , Village Hall, **7pm**

December

Thursday 3rd "Squit Night" – live music at The Bell – from **8pm**
Saturday 5th Santa boules – Open tournament - Playing field **10am**
Saturday 5th Vinyl Night at the Bell from **6pm**
Wednesday 9th Parish Council Meeting , Village Hall, **7pm**
Saturday 12th MCC Christmas Party

Jo Hannon Design

Building and Interior design

Domestic extensions, kitchens,
bathrooms and furniture

Jo@johannondesign.com 07815 295927



DGT Maintenance Services

Locally based Maintenance Company

Repairs & maintenance to all types of
property

Small Jobs Welcome, Free no obligation
quotes

Telephone: 07941243140 or 01728 668715

Email:

dgt maintenanceservices@gmail.com