

MICKLEHAM PARISH Magazine

A community magazine for Mickleham and Westhumble



November 2018


P.F. WINDIBANK
 FINE ART AUCTIONEERS & VALUERS
 Buying and Selling Jewellery Silver Antiques and Collectables



We offer comprehensive Probate and Insurance Valuations
 P F Windibank Auctioneers
 The Dorking Halls Reigate Road Dorking Surrey RH4 1SG
 01306 884556 sjw@windibank.co.uk www.windibank.co.uk


Bullimores
 Chartered Accountants
The Safe Pair of hands
 Tax • Accounts • Probate
 Inheritance Tax & Executorship

For advice, please call us on: **01306 880880**
 or email: partners@bullimores.co.uk
www.bullimores.co.uk

Bullimores LLP licenced to carry out the reserved legal activity of non-contentious probate in England and Wales by the ICAEW



Stepping Stones
Country Pub and Dining

**STEAK NIGHT
 EVERY TUESDAY
 TWO COURSE MEAL
 GLASS OF WINE
 £19**

Food Served All Day – Free Wi-Fi
Walkers – Muddy Boots – Cyclists – Families and dogs
All welcome
Lovely function room available for meetings family and business events
Near Box Hill and Westhumble Station
01306 889932 www.steppingstonesdorking.com
steppingstonespub@gmail.com



**Please see
website
for
special
events**

Sherlock Funeral Service

Sherlock Funeral Service is an Independent family owned business, established over 100 years

- Private Service Chapel & Rest Rooms
- Home visits arranged if required
- Pre-Paid Funeral Plans available
- Free Parking

Telephone: 01306 882266
 Trellis House, 190 South Street, Dorking RH4 2ES.
 Email: office@sherlockandsons.co.uk





Funeral Directors & Monumental Masons

Mickleham Parish Magazine

The Rectory, Mickleham

**November
2018**

Mickleham Parish Magazine

A community magazine for Mickleham and Westhumble published under the auspices of Mickleham PCC with an independent editorial panel.

The magazine is published at the beginning of each month except January and August.

COPY DEADLINE
 FOR THE
**DECEMBER 2018
 MAGAZINE**
**Sunday
 11th November**

send to:

Sue Tatham
 St Anthony Pilgrim's Way
 Westhumble
 Dorking RH5 6AW
 01306 882547
editor@micklehammag.co.uk

Contributions in any form are welcome as are good quality photographs. There is no charge for advertising local charity and community events. However the editors reserve the right to shorten omit or reformat articles submitted for publication depending on space.



Printed by Bishops Printers
 Portsmouth

Dear friends

Like many people worldwide, John Plummer was deeply moved by the photograph of a nine year old girl running naked and horribly burned from a napalm attack during the war in Vietnam. But for Plummer the picture had a special significance because back in 1972 he had been the man responsible for setting up the air strike on that village, a strike he approved after twice being assured that there were no civilians in the area. In 1990 Plummer became a Christian and was later ordained. In 1996 he learnt that on that fateful day in 1972 Kim Phuc and her family had hidden in a pagoda when a bomb hit the building. She had run into the street just as another plane dropped napalm, which hit her and her two young cousins; they died but she tore off her burning clothes as she fled. Moments later as she ran past a war photographer and two journalists, she collapsed. She was rushed to a hospital and spent fourteen months undergoing surgery, being operated on by a specialist plastic surgeon. Plummer also learnt in 1996 that she was alive and living in Toronto, where she had said if she ever met the pilot of the plane she would tell him she forgave him and that although they could not change the past, she hoped they could work together for the future.

Would you do that? Would you forgive someone totally if you had suffered like that?

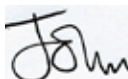
Remembrance Sunday brings significant and often conflicting emotions to millions of people across the planet, not least because of the Christian message of forgiveness implicit in many services. The powerful image of the poppy speaks about reconciliation and about the capacity to symbolise something other than victory and triumphalism, whilst recognising the incredible significance of the day to so many people for whom war and conflict have brought such pain and sorrow.

We rightly wear our poppies with pride as we remember all those who have suffered and died, or whose lives have been fundamentally changed through conflicts across the planet. It is good that we do not forget, and also that we acknowledge the terrible cost of human failure in every generation and every conflict since the Great War which ended 100 years ago. We too have a part to play for we may not always forgive and seek peace as perhaps we ought. Forgiveness is such a deeply personal action, often the deeper the hurt the harder it is to forgive. The ultimate proof of total forgiveness may well be when we ask God to let go free those who have hurt us, whether individually or collectively, and not to receive the punishment we think or indeed know, they deserve.

In 1996 Plummer met Kim Phuc. "She saw my grief, my pain, my sorrow" he later wrote. "She held out her arms to me and embraced me. All I could say was 'I'm sorry, I'm so sorry, I'm sorry' over and over again. At the same time she was saying 'It's all right, it's all right, I forgive you, I forgive you'." He later found out that although she was raised as a Buddhist, Kim Phuc had become a Christian in 1982.

Jesus said 'Blessed are the peacemakers'. (Matthew 5:9) and that means us if we are actively committed to the cause of peace in our world, which starts in our own lives. If we are, the poppy is not only a powerful memorial to the fallen, it is a call to arms for a different war entirely.

I pray God's blessing on us all as we work for a world of justice and peace.



Reverend Canon John Harkin
 Parish Priest



JOIN US FOR BREAKFAST

THE RUNNING HORSES

9 – 10 AM

Please book by the Tuesday before

MEN'S BREAKFASTS
THIRD SATURDAYS

17TH NOVEMBER

Book with: Andy Diamond
diamo1@hotmail.co.uk

WOMEN'S BREAKFASTS
FOURTH SATURDAYS

24TH NOVEMBER

Book with: Stephanie Randall
0773 6933 482
srandall55@gmail.com

Tea @3

Fourth Mondays
26th November

Host: Jo Brown
Mickleham Lodge,
Old London Road
Mickleham 01372 75015

ALL WELCOME
TRANSPORT AVAILABLE
We apologise for printing the wrong
date for the October Tea@3.

Photograph: Stephanie Randall



Got your shoebox?

Operation Christmas Child

We are once more collecting shoeboxes filled with appropriate goods to brighten the lives of children living in countries where such presents would otherwise never be received. Your simple act of generosity gives hope to children caught in the midst of wars, natural disasters and extreme poverty and shows them they are not forgotten.

Leaflets available at the church and St Michael's School. If you are unable to fill a shoebox but would like to support the work of the charity, the leaflet contains an envelope in which donations can be placed.

**Filled boxes should be returned to the church or the Rectory by
Sunday 4th November**

It is time to think about Christmas...

Details of festive events in December
can be found on page 9.

Mickleham Parish Magazine 'Christmas Card'

As in past years readers who would like to send Christmas greetings to their local friends by way of the magazine and donate the money saved on cards and postage to charity should contact Sue Tatham.

01306 882547 editor@micklehammag.co.uk

**The copy deadline for the December magazine is
Sunday 11th November.**

The charge is £5 per person (£10 per couple) but if you would like to give more, that would be great.
Proceeds this year will go to St Michael's C of E Infant School

Harvest Festival at St Michael's

The church was looking beautifully colourful on Sunday 7th October when we celebrated our Harvest Festival. And the sounds of excited children filled the air as those who had attended the Harvest Workshop at the school arrived with their parents and siblings. As in recent years our harvest gifts were non-perishable

items to be given to those who use the Leatherhead Night Hostel, now called LeatherHEAD START.

A very big thank you to Wendy Wyatt and her team for the lovely floral decorations throughout the church, including Alison Wood's spectacular pedestal arrangement next to the altar. (pictured left)

Harvest Supper 2018

Our annual Harvest Supper is always a lively jolly family evening in our late September social calendars. Each year it takes a different format, but it is always fun-filled. This year was no exception with innovative ideas to entertain us. It was very well-attended by a particularly lively bunch of Mickleham and Westhumble residents and friends.

Sadly the little piggies couldn't make it at the last minute so the piggy racing had to be cancelled. However we were definitely kept busy with Jo Brown's superb quiz and Simon Ward's fun Pétanque competition.

We were kept suitably refreshed with Duncan Irving's bar supplying fine wines and ales to accompany our delicious fish and chip supper followed by yummy fruit salad expertly prepared by the ladies/gents of Mickleham and Westhumble.

Our quiz mistress Jo certainly kept our brains fully occupied. A superbly researched and presented quiz with categories to suit absolutely everyone, so that it was a neck and neck battle between tables throughout the evening, all down to the last round as to who were the victors. Great fun and it certainly exercised our brain cells to drag up knowledge and decipher brain teasers. This really was a quiz for all. Well done Jo.

Simon's Pétanque (French boules) competition kept us on our toes throughout the evening. Pétanque is a game most people associate with retired Frenchmen sporting berets and sipping pastis while throwing metal boules around in picturesque villages. But this was Pétanque Mickleham style! We were transported to that sleepy French village in the form of a floodlit Pétanque piste in the village hall car



park. Pétanque is a great game which can be played by any age. Being a speed knock-out competition everyone had the opportunity to participate and soon we had a real skill and gamesmanship battle on our hands between the teams expertly guided by Simon. In the end we all had such fun everyone was a winner. In fact, so many people enjoyed it there is talk of setting up a Mickleham and Westhumble Pétanque Club.

All in all an action-packed evening full of laughs with friends. I know an awful lot of hard work goes into the organisation these village events and hats off to everyone involved. We also raised £380 for the church, I for one am so happy to be part of this vibrant community. Bring on the next event!

Penny Butcher

Children's Harvest Workshop

Photograph: Debbie Turner



The Friends of St Michael's School hosted a successful Harvest Festival workshop in conjunction with St Michael's Community Nursery. This was a morning of harvest crafts in the school hall, followed by a special

service of thanksgiving at Mickleham Church. A heartfelt thank you to everyone from the village who helped us at the workshop; the children had an amazing morning. A similar workshop is planned for Christmas and is open

to everyone in the local community. Please contact the Friends using the details below if you would like to find out more or wish to help in any way.

Debbie Turner
friendsofstmichaels2017@gmail.com

Superb professional
cleaning of carpets
oriental rugs
upholstery curtains
and leather
Guardsman
anti-stain protection

- spot stain and odour removal
- leather cleaning specialists
- flame retarding
- dust mite reduction service
- all work fully insured & guaranteed

For a free no obligation quotation call today
Freephone 0808 144 9071
John Joannides 28 Bracken Close Bookham

Safeclean
The furnishing care specialists from GUARDSMAN



*Pinehurst
Rest Home*

We aim to provide an excellent service at
competitive rates supporting emotional physical
and social needs of our clients always respecting
and protecting their status as adults.

- Residential and 24-hour daycare
- Excellent cuisine
- Facilities for disabled: medic bath / lift
- Home doctor in attendance
- Single & sharing rooms
- Convalescent & short stays
- Lounge with TV & piano
- Separate dining room
- Physiotherapist chiropodist & hairdresser
- Entertainment: theatre visits / parties
& cabarets held on premises

National Trust Road Box Hill
Mickleham Dorking Surrey RH5 6BY
Telephone: 01306 889942 / 888253

Dorking Decorators
PROFESSIONAL PAINTERS & DECORATORS

40 Years Experience
All aspects of painting and decorating

01306 640418

www.dorkingdecorators.co.uk

Approved by Trading Standards & Checkatrade



CHRIS HULME

Garden Machinery

Service and repair of all makes and models of:

- Ride-on mowers • Rotary mowers • Cylinder mowers
- Chainsaws • Strimmers • Hedge cutters
- Rotavators • Blower vacs

Quality secondhand machinery

Collection and delivery service

The Barn Cowslip Lane Mickleham 01372 377757 / 07950 961606

• Quality Flowers • Personal Service • Customer Satisfaction •

FLOWERS by ELAINE

- Wedding Specialists •
- Qualified Florists • Fresh Flowers & Plants • Local Delivery •
- Varied Gift Selection • Corporate Functions • Special Occasions •
- Funeral Tribute Specialists • Interflora Worldwide •

66 High Street, Dorking, Surrey RH4 1AY
T: 01306 883511 • E: fbe@btconnect.com
www.flowersbyelaine.co.uk



SIMON HOOPER For all
your decorating needs...

Professional friendly and speedy service at all times

- Fully insured
- Insurance work
- Exterior painting
- Interior decorating
- Free quotes & advice
- Oil & Water-based products
- Commercial/Domestic work
- Wallpaper hanging & removal

07947 135 376 0208 3978 962
www.slhdecoratingservices.com

Remembrance Sunday 11th November

The Service of Remembrance will start in St Michael's
at 10 am and will culminate in the traditional
commemoration at the War Memorial.

All welcome

The Headmaster and Governors of Box Hill School have kindly invited those attending the
Remembrance Service to coffee at Dalewood following the service.



A Concert for Remembrance Sunday

This year's Remembrance Day Concert
by Mickleham Choral Society will
take place at 7 pm in St Michael's
Church on Sunday 11 November and
will mark the end of the First World

War, one hundred years ago. It will be a
special occasion to remember all those
who fell in the war and especially those
eleven men of Mickleham who perished
and whose names are forever inscribed

on the memorial in the churchyard. The
booklet with the details of the fallen in
both world wars is available to read at
the back of the church.

The theme of One Shot both represents
the first shot fired in the attack which
lead to the assassination of Archduke
Franz Ferdinand and his wife Sophie
which precipitated WW1 and then
all the subsequent shots fired which
lead to the death of almost 20 million
people.

The concert will feature *Travelling
Tales* by Alan Bullard and in keeping
with the occasion some of the songs
of the war that kept the men going –
such as *It's a Long Way to Tipperary*,
Keep the Home Fires Burning, *I Want
to Go Home* etc. Interspersed with
readings their will also be a musical
rendering of *In Flanders Fields* * a poem
which immortalised the red poppies
growing on the disturbed earth of the
battlefields and which is still such a
potent symbol of the conflict today.

I hope to see you there to remember
the sacrifices made for our freedoms
today. David Kennington

* *In Flanders Fields* was written in
1915 by Major John McCrae, a military
doctor and second in command of the
1st Brigade Canadian Field Artillery
during the Second Battle of Ypres.
It is believed that the inspiration for
the poem came from the death of his
young friend Lieutenant Alexis Helmer
during the second week of the battle.



Mickleham Choral Society

ONE SHOT

1918
2018

A REMEMBRANCE

A concert for Remembrance Sunday marking the
Centenary of the end of WW1 in words and music.
Mickleham Parish Church Sunday 11th November at 7 pm

Tickets: £10 (£5 for children under 14)
from Anne Weaver 01306 883932
secretary@micklehamchoral.org.uk



Lest We Forget The Batchelor Family

children, including Leonard, living at 1 Elm Cottages on Byttom Hill.

It seems hardly surprising that after appeals were made for army volunteers, following Britain's declaration of war on Germany in August 1914, Percy, a grocer, and his brother Horace, a carpenter, were keen to enlist. With their mother dead and the family living in cramped conditions, they no doubt viewed going to war as something of an adventure. They travelled to the recruitment office in Kingston on the 30th August and joined the 7th Battalion of the East Surrey Regiment. This was the same battalion to which Harry Edgington (their Mickleham classmate who died in France in 1917) had been assigned ten days earlier. Horace was given service number 463 and Percy 465 (who received 464 I wonder?). In September the *Dorking Advertiser* published a list of fifty-eight Mickleham men who had joined the army. This included their brother George Victor (by then no longer living in Mickleham) of the Royal Engineers. He is almost certainly the George V Batchelor who was awarded the Military Medal in 1917.

The 7th Battalion arrived in France in June 1915 and from the 30th September took part in the Battle of Loos, followed by the Action of the Hohenzollern Redoubt on the 13th October. Both Horace and Percy were wounded during this period and Horace's wounds were sufficiently serious that he was declared to be no longer fit for service. He was transferred to a hospital in Lincoln where he wrote to Edward Davies, the Mickleham Parish Clerk. His letter, published in the *Dorking Advertiser*, describes how he was hit by shrapnel and that 'the fellows all kept wonderfully cool, though I guess it takes more than a shell or two now to frighten us, for we are used to these long since'. He was given a Silver War Badge, awarded to service personnel who had been honourably discharged due to wounds or sickness. These were worn on civilian clothes and prevented the recipients from being accused of cowardice by avoiding military service.

Lancelot, born in August 1900, was too young for full military service but he joined the Royal Flying Corps as a 'boy' in 1917 before transferring to the RAF on his eighteenth birthday for the last few weeks of the war. The signing of the Armistice must have been a cause for celebration in the Batchelor family with all four sons who served in the military having survived the war. Sadly, their disabled brother Leonard died a few days later and was buried in Mickleham on the 20th November.

After the war, Lancelot, Horace and Ted joined their father in his building company, all of them living to begin with at 1 Elm Cottages, with sisters Queenie and Georgina. In the mid-1920s the family built and moved to Mon Repose on School Lane, running their business from Batchelor's Yard nearby. Even after the brothers married they stayed on in Mickleham: Lancelot at Mon Repose, Horace in one of the newly-constructed houses in Dell Close and Ted back at Elm Cottages until he moved to Downs View (which may also have been built by the family). Georgina married and moved to Dorset, whereas Queenie remained single and moved to 2 Thorn Cottages in the 1950s. She died at Pinehurst Nursing Home in 1990 and there is a bench in St Michael's churchyard in memory of her. The last remaining sibling was Ted who died in 1995. Eleven members of the Batchelor family are buried in the churchyard and I wonder if George and Annie would have been surprised to know that, almost 130 years after they arrived in Mickleham, a significant number of local residents still personally remember some of their children.

But what became of Percy? He pursued a very different career, spending a large fraction of the 1930s and 1940s living and working in Nigeria and the Gold Coast (now Ghana). Ships' passenger lists show that he always travelled first class and his occupation was given as either accountant or company representative. In 1947 he and his wife moved to Guernsey where he died in 1986.

Judith Long

Remembrance Day 2017 Baghdad

The Diocese of Cyprus and the Gulf covers an area from Cyprus in the west to the Straits of Hormuz in the east and from Aden in the south to Baghdad in the north. The Diocese has churches in fifteen different political jurisdictions including St George's Church in Baghdad.

The present church was built in 1936. It was very much the British church as opposed to those of the ancient Christian churches of Iraq, Chaldean, Assyrian Orthodox and Armenian. St George's today is anything but a British church. While it remains an Anglican Church the congregation is almost entirely Iraqi and the parish priest is the first ordained Iraqi Anglican priest, Father Faiz Jerjees.

However the link with past continues and on 12th November last year Father Faiz and the Archdeacon for the Gulf Bill Schwartz joined with an RAF Chaplain



Photograph: John Banfield

in leading a Remembrance Day service in the grounds of the British Embassy inside the Baghdad Green Zone. A large number of countries were represented including senior members of the Iraqi army. In many respects it was a

traditional act of remembrance with British Legion poppies and the Last Post but the service included a reading from the Quran and given the mix of nationalities it also had the sense of an act of reconciliation. John Banfield



Since 2013, a team from Dorking Museum has been exploring the experience of the war in the town and surrounding villages. In each of the centenary years the museum has run an exhibition focussing on a different aspect of the local experience on the 'home front'. These five exhibitions will be on display together for the first time in St Martin's Church, Dorking, and open FREE to the public throughout the week following the Armistice centenary, November 12th-16th. It explores the impact of the war on the people of Dorking and the surrounding villages from its outbreak to the Armistice and beyond. Feature panels build up a picture of a community at war, covering enlistment and recruiting, influxes of refugees and troops, the changing role of



Photograph: Dorking Museum

Commemoration of the Dorking War Memorial in South Street, 17th July 1921

women, Dorking's time as a garrison town, the response of pacifists and anti-war campaigners, the impact of major offensives like the Somme and Passchendaele, hardships, shortages and deprivations. Biographical panels

feature local figures who made unusual or significant contributions, and a digital screen presents brief biographies of nearly 900 men (and a handful of women) from the town and villages who lost their lives in the conflict.

Carols by Candlelight Service – Sunday 16th December

Singers are invited to join the choir for this service.
Rehearsals start Sunday 25th November- see page 9.



- Bespoke dress making
- Soft furnishings
- Clothing alterations
- Curtains
- Sewing lessons
- Roman Blinds

Contact Tracey: 07511 079441
traceyssewingroom@gmail.com

TreeLine Services Ltd.
**YOUR LOCAL PROFESSIONAL
TREE HEALTH CARE SPECIALISTS**

Felling, Pruning, Stump Removal, Planting, Logs,
Woodchip, Air Spade Services, Consultancy

Call us on **01306 741800**
office@treeline.co.uk • www.treeline.co.uk

We Clean Ovens ...so you don't have to!

Call us today to have your cooking appliances sparkling, using our own eco friendly products.



- **Range & Aga Specialists**
- Ovens & Hobs
- Extractor Hoods
- Microwave Ovens
- Traditional Stoves

Call TODAY for **01306 302021**
LOCAL Service ovenudorking.co.uk

EDE BROS

REMOVALS • STORAGE • SHIPPING •

- Since 1926, Capel-based and family owned
- STRESS-FREE, local, national & worldwide
- Contact us for your **FREE** estimate...

01306 711293
edebros.co.uk



Gill and Paula would like to warmly welcome you to Aspen Care offering assistance to enable you to live in the comfort of your own home with care and companionship.

- A happy alternative to a care home
- Cover while your family or carer takes a holiday
- Recuperation and rehabilitation following a hospital stay
- All aspects of personal care medication and meal prep
- Dementia care disability chronic & critical conditions end of life care
- Accompaniment to appointments

Call for a chat to discuss your requirements.

We look forward to hearing from you.

01737 354821 info@aspensliveincare.co.uk www.aspensliveincare.co.uk

ALFA CHIMNEY SWEEPS

- Clean prompt work
- 30 years' experience
- Specialist advice for old/problem chimneys
- Weekday and weekend service

01306 88287
07704 478414



YOUR LOCAL FARM SHOP ON DENBIES WINE ESTATE
farm shop deli plant centre
FREE PARKING www.vgfarmshop.com **01306 880720**

Open 7 days 9.30 am. to 5.30 pm

- Fresh fruit & veg – local & home grown • Great range of local cheese
- Fresh bread cakes croissants & pastries
- Cook ready meals; Bangers Galore sausages

Do come to our
Christmas Food Fair
Sunday 25th November 12 – 4 pm
Lots of local producers:
tasty treats and gift ideas



Carols by Candlelight

Sunday 16th December
St Michael's Church 6.30 pm

The choir for this service will be conducted by Juliet Hornby.
As in past years additional singers are invited to sing with the church choir.
Rehearsals start in church on Sunday 25th November from 5 to 6.30 pm
and will continue for the following two Sundays, with a brief one
at 5 pm on the evening before the service.
Please contact Juliet for further information. juliethornby@yahoo.co.uk



Christmas Eve Crib Service

Our Christmas Eve Crib Service in the 'Bonfire Field' in Westhumble, is a very popular family event, attracting about 100 people last year. We start at 4 pm at the junction of Adlers Lane and Chapel Lane, before processing to the field, led by Mary and Joseph. There are readings and carols along the way, which help to tell the story.

Once again we would like as many children as possible to take part, either as readers or the 'cast'. We need all the main characters as well as a bevy of angels, flocks of shepherds and an impressive train of Wise Men with their attendants. It is not unknown for adults to dress up for the occasion as well, so

find your tea-towels and old curtains and join in. I remember that we had three adults to play the parts of the Wise Men last year, and they did it with considerable aplomb! There will be hot drinks and mince pies afterwards.

If you haven't been before, it is a truly wonderful event which reminds us, in the midst of the hurly-burly of present wrapping, potato peeling and last minute panics, that what we are celebrating is the birth of a baby, Jesus, in a crude stable, to a young girl and her husband whose hearts must have ached with love and fear in equal measure.

Further details will appear in next month's magazine, but if you would like to take part, or help in any way, please get in touch with me as soon as you can.

Anne Weaver

01306 883932

weaver_anne@hotmail.com

Children's Christmas Workshop

Sunday 2nd December
St Michael's School – 9.45 am

followed by

The Christingle Service
St Michael's Church – 11 am



Christmas Carolling



Carol singing in the
Chapel ruins, Chapel Lane,
Westhumble
Tuesday 18th December
6.30 p.m.

Carol Singing Pub Crawl
Friday 21st December

7.15 pm Stepping Stones
8 pm The Running Horses
8.45 pm King William IV

More details in December magazine

**Friends of St Michael's
School**

Christmas Tree Sale



**High quality trees
available in a variety of
sizes. Order now and
collect from the school on
2nd December**

friendsofstmichaels2017@
gmail.com



Well, last month's crossword was not one for vermophobes. Clue 20 Across referred to clues 3, 15, 24, & 27 with answers Inch, Fluke, Thread & Slow, which are all types of Worm – but the 'Diet' in the clue is not of the eating variety but the name for an imperial assembly and in this case, the most famous Diet of Worms (a city about 30 miles south of Frankfurt) was in 1521 when Emperor Charles V presided over an assembly of the Holy Roman Empire to address the issue of Martin Luther and the beginning of the Protestant Reformation. Martin Luther was granted safe passage to appear before the Diet but the resulting Edict of Worms denounced him as a heretic and instructed his capture. Lucky for him his powerful testimony of faith had won him powerful friends who protected him and enabled the Reformation to continue to grow in strength.

So, it was a slightly different theme to 'My Fair Lady' from the month before's crossword.

Here are some of the other clues:

2 You put the boot into this eviscerated thing before Sunday (4,2)

DEFINITION: 'thing before Sunday'

SIGNAL WORDS: 'eviscerated' = remove the centre of

CRYPTIC PART DECIPHERED: 'You put the boot into this' = STIRUP, take the middle out of that removes the central 'r' to give the answer.

ANSWER = STIR UP

'Stir up Sunday' is an informal term in Anglican churches for the last Sunday before the season of Advent. It gets its name from the beginning of the collect for the day in the Book of Common Prayer, which begins with

CRYPTIC DELICACIES

the words, "Stir up, we beseech thee, O Lord, the wills of thy faithful people". But it has become associated with the custom of making the Christmas puddings on that day. This year it is on 25th November.

8 WC houses the Queen and covers first base, say (8)

DEFINITION: 'covers first base, say'

SIGNAL WORDS: 'houses' means that the next bit of the clue should put inside the previous bit of the clue, 'say' = 'for example' (but beware, in some cases it can mean 'sounds like')

CRYPTIC PART DECIPHERED: 'WC' = 'FIELDS' (as in WC Fields, 1880-1946, the American comedian whose comic persona was famous for his raspy drawl, grandiloquent vocabulary and snarling contempt for dogs and children), 'the Queen' = 'ER' (as in Elizabeth Regina, made famous on pillar boxes, and quite a lot of other things!). So put 'ER' in 'FIELDS' to get the answer

ANSWER = FIELDERS

The example fielders are from two different sports: 'covers' for cricket, & 'first base' for baseball

23 Hire last plane flying without wife, the silly cow (6)

DEFINITION: 'cow'

SIGNAL WORDS: 'last' = the last letter of the next word, 'flying' = disappearing, i.e. remove the previous item, 'without' = a bit naughty but it is taking the letters of 'WITH' out from the next collection of letters, 'silly' is a pointer to an anagram
CRYPTIC PART DECIPHERED: 'Last plane' = 'E', remove that from HIRE gives you HIR. 'without wife the' is removing the letters of WITH from 'wiFE thE', leaving FEE. So altogether you have HIR FEE and when you make that silly you get the answer

ANSWER = HEIFER

So the last part of the clue is not me being rude as initially assumed by my

maternal editor (or at least, not in the way that she thought).

27 Thick heads to speak loosely or waffle (4)

DEFINITION: 'Thick'

SIGNAL WORDS: 'heads of' means to take the initial letters of the following words

CRYPTIC PART DECIPHERED: take the initial letters of: Speak Loosely Or Waffle

ANSWER = SLOW

19 Escorts chess theologians all over the place without clothes on (7)

DEFINITION: 'Escorts'

SIGNAL WORDS: 'all over the place' is a pointer to an anagram, 'without' = remove the following letters from the words to be anagrammed

CRYPTIC PART DECIPHERED: 'CHES TheOLOgiaNs' with 'CLOTHES ON' removed leaves 'shegias', so scramble that up to get the answer

ANSWER = GEISHAS

I didn't realise until talking someone through this clue that 'chess theologians' could be construed to mean 'bishops' – believe me, that was totally unintentional and just an example of the Crossword Setting Stars coming into alignment.

9 Sensor for a new note sound (7)

DEFINITION: 'Sensor'

SIGNAL WORDS: 'sound' points to a homophone

CRYPTIC PART DECIPHERED: A + ('new', abbreviation = N) + ('note' = 'tenner' as in ten-pound note, which sounds like TENNA)

ANSWER = ANTENNA

Always good to get ideas of things to discuss in my article, so any responses or queries will be happily received at andrewt@andrewtatham.co.uk

Andrew Tatham

Mickleham and Westhumble Horticultural Society Wintergreen Perennials Time to Colour up for Winter

Will it come back next year?' is one of the most common questions asked when you are behind the bench at a plant stall. So firstly, yes if it is a perennial and has not died of all the things that plants are heir to over the winter, yes it will come up again. In fact established perennials often show their promise by October, for example my oriental poppies already have clusters of fresh green leaves showing.

So what might winter perennials be? I am calling those perennial plants that have foliage in winter 'wintergreens' as opposed to 'evergreens'. So *Arum italicum* (Lords and Ladies) which we see in the hedgerows in spring with leaves, then hooded flowers, then bright red berries, disappear completely below ground during the summer, only to re-emerge in autumn. The 'posh' version of this plant has the ridiculously long name of *Arum italicum subsp italicum* 'Marmoratum' but with its spear-shaped marbled leaves it is highly decorative and long-lasting. One of my top 10, very easy to grow and a good foil for tallish flowering bulbs in spring.

However, just to be contrary, let us start with those that are not green but give interest through another colour. *Libertia peregrinans** with orange-hued sword-like stems would bring a winter border to life interspersed with, say *Ophiopogon planiscapus* 'Nigrescens' with its black grass-like leaves, often planted to contrast with snowdrops, but which could equally well be set off by the autumn flowering *Cyclamen hederifolium*, particularly those varieties with a lot of silver in their leaves. If it is silver you want for contrast, *Stachys Byzantina*, or Lamb's

Ears as they are more popularly called, have both colour and a soft hairy texture and there are a number of pulmonarias which have very heavily silver-splashed leaves. Both these may need their foliage tidying up from time to time but are worthy of a place in any winter border.

Euphorbias are another wintergreen standby, from the trailing waxy-blue leaves of *Euphorbia myrsinites* to the stately roundels of *E. characias* and *E. wulfenii*, the green followed by lime-green flowers in spring. There are many varieties to choose from. I think *E. amygdaloides* (purpurea) may be a native as I see it growing in the woods in Norbury Park. It has purple-mahogany leaves and the typical acid-yellow flowers that would look well with some red-leaved heucheras or perhaps with H. 'Spotlight', which has limey-green leaves with red central blotching. I could see these two working well together in a container in a shady spot. Hellebores could perhaps also fit into this scheme?

Of course, there are ferns which even when you cut them back, show their russet 'knuckles' at the base as well as biennials such as foxgloves, mulleins and verbascums, all of which make handsome rosettes with the added bonus of flowers to follow. I have not even mentioned epimediums with their heart-shaped leaves that last so well all through the winter but should be cut back in early spring to allow the emerging flowers to be revealed.

I hope that provides some food for thought which will set you thinking of quite other 'wintergreens' that you might add to this brief list. What they



Arum italicum subsp italicum

Photograph: Alvesgaspar



Euphorbia sp.

Photograph: Meneerke bloem



Cyclamen hederifolium

should all do is lift your spirits on a bleak wintry day.

Judy Kinloch

*From New Zealand so not totally reliably frost-hardy, but I have seen it growing well at Beth Chatto's garden in Essex.



Gardens Revived

A family-run gardening business

Specialising in all forms of garden maintenance plus extra treatments such as scarifying, weed spraying and more. We are friendly, professional and affordable – Excellent local recommendations
Andrew O'Donoghue 07939 619 537 www.gardensrevived.com

**Caring for our
countryside**

Help shape future plans for Surrey County Council's countryside sites

Visit surreycc.gov.uk/caring-forourcountryside by 3rd December.

Or call 03456 009 009 or text 07860 053 465 for a printed questionnaire

Not feeling as well as you'd like?

Counselling • Mind & Body Healing
Reiki Treatments • Shamanic Healing
Meditation • Courses & Workshops

"I have been on a life-changing journey the benefits of which will be with me forever." ARJ Surrey



Call Judith Cobby
on 01306 882229
or 07790 614448

www.healing-inspiration.co.uk

Ballroom Dancing Latin American Dancing Professional Training [IDTA]

Private lessons only
Sunday & Monday evenings
6 - 10 p.m.

At Mickleham Village Hall
Dell Close Mickleham Surrey RH5 6EE
07901 742 887
vmvdancing@gmail.com



IDTA Qualified Teacher

Rowlatt Garden Services

RGS

EST.1985

Gardens large and small we maintain them all

All aspects of private and commercial garden
and estate maintenance landscaping undertaken
Fencing grass & hedge cutting

Telephone: 01737 844373 Mobile: 07887 838666
References available upon request

In Pain? We Can Help Dorking Chiropractic Clinic

Dr Graham M Allen & Associates

- Back Pain and Sciatica
- Hip, Knee, Foot and Ankle Pain
- Neck Shoulder and Arm Pain
- Headaches and Migraine
- Sports/Occupational injuries
- RSI/Carpal Tunnel
- Back Pain in Pregnancy
- Arthritic Pain
- Trapped Nerves
- Joint Problems



01306 887793
316 High Street Dorking RH4 1QX
www.dorkingchiropractic.co.uk

HSA

Registered by the General Chiropractic Council • Member of the British Chiropractic Association

BLINDS • CURTAINS
INTERIOR FURNISHING & WALLPAPER



SAINT PAULS WORKROOMS

84 Falkland Road, Dorking RH4 3AD | T: 01306 740201
www.saintpaulsworkrooms.co.uk

STEVE & TIM LANGLEY

Experienced craftsmen

ANTIQUE RESTORATION
CABINET MAKING
FRENCH POLISHING

Free estimates collection & delivery
01372 457700
07960 486455 07847 769517

Road and Competition Engineering Ltd



Specialists in the
maintenance and
restoration of
historic road and
race cars

From general servicing performance
modifications engine/gearbox rebuilds
to full restorations. We also offer vehicle
storage. Our workshop is based in Charlwood



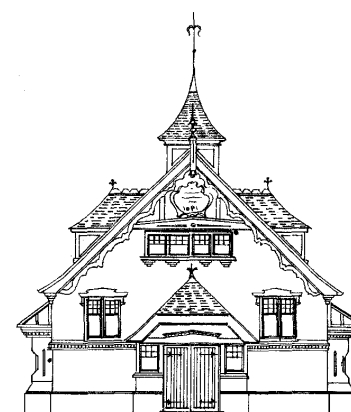
Jamie Mason 07840 698452 www.raceltld.com

DORI VANA PLUMBING YOUR LOCAL PLUMBER

EXPERIENCED RELIABLE
AND PROFESSIONAL
From changing washers to changing bathrooms

CALL DORI
07977 220465 / 01306 887282

Proud members of
Checkatrade.com
Where reputation matters

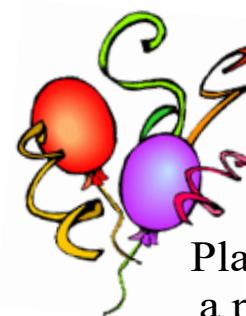


Mickleham Village Hall available for hire

Hall bookings
Table & chair hire

Deanna Darnell
01372 388474
07790 941 601

d_darnell_MVH@hotmail.co.uk
[www.surreycommunity.info/
micklehamvillagehall](http://www.surreycommunity.info/micklehamvillagehall)



Planning
a party?

Equipment
available for hire

China ~ Cutlery
Electric urn

Equipment hire
Mary Banfield
01372 373912
mgbbmw@aol.com

Community Directory

Box Hill (National Trust)
Head Ranger – Mark Dawson 01306 885502
mark.dawson@nationaltrust.org.uk
Friends of Box Hill – Chair Lyn Richards 01737 842889
lyn@mra.uk.net

Box Hill School
Headmaster – Cory Lowde 01372 374814
hmsec@boxhillschool.com

Dorking Cricket Club
Chairman – David Spackman 07831 859232
david@theimagecompany.co.uk

Dorking Group of Artists
Exhibition Secretary – Patricia Booth 01737 24491
patriciabooth100@gmail.com

Dorking Lawn Tennis & Squash Club
Jim Cattermole 01306 883629
jim.cattermole@uwclub.net

Dorking Rugby Club
Jim Evans 07789176417
jim@flintcottage.net

The Garden Shed
Pauline Davis 07759 646 353
paulinemdavis@gmail.com
Susie Gowenlock 07768 923 088
susiegowenlock@gmail.com

Juniper Hall Field Centre 01306 734501
enquiries.jh@field-studies-council.org
Head of Centre – Simon Ward Simon.lr@field-studies-council.org
Friends of Juniper Hall – Suzy Hughes 01372 275393
suzyhughes@businessetiquetteint.com

Mickleham Children's Playground Association
Secretary – Sarah Parfitt 07767 891772
sarah@sarahparfitt.com

Mickleham Choral Society
THURSDAYS 8 - 10 PM – MICKLEHAM VILLAGE HALL
Conductor – Juliet Hornby 01372 373106
Secretary – Anne Weaver 01306 883932
www.micklehamchoral.org.uk weaver_anne@hotmail.com

Mickleham Old Box Hillians Football Club
Secretary – John Atewell 01372 374745

Mickleham Parish Council
SEE WEBSITE FOR MEETING DATES www.micklehampc.org.uk
Chairman – Rev'd David Ireland 01372 379381
rev.ireland43@btinternet.com
trevor.haylett9@gmail.com

Parish Clerk – Trevor Haylett
Mickleham Parish Magazine
Editor – Sue Tatham 01306 882547
editor@micklehammag.co.uk

Co-Editor – Charlotte Daruwalla 01306 884025
editor@micklehammag.co.uk
Administrator – Fiona Roberts-Miller 01306 740851
admin@micklehammag.co.uk

Mickleham Village Hall
Chairman – Ben Tatham 01306 882547
ben@thetathamss.co.uk
Bookings Manager – Deanna Darnell 01372 388474
07790 941601
d_darnell_MVH@tmail.co.uk

ST MICHAEL'S CHURCH

*within the United Benefice
of Leatherhead and Mickleham*

INCUMBENT

The Reverend Graham Osborne 01372 372313

PARISH PRIEST

The Reverend Canon John Harkin 01372 378335

harkin12@btinternet.com

Duty days primarily Sunday, Monday and Tuesday

CHURCHWARDENS

John Banfield 01372 373912

banfieldjohn@aol.com

Anne Weaver 01306 883932

weaver_anne@hotmail.com

PARISH ADMINISTRATOR

Alison Wood 01372 376443

admin@micklehamchurch.org.uk

PCC SECRETARY

Elizabeth Moughton 01306 883040

eliz.moughton@btinternet.com

TREASURER

Richard Siberry 01372 375303

siberrman@btinternet.com

WEDDINGS CO-ORDINATOR

Jane Denny 01306 883107

carsondenny@aol.com

BAPTISMS CO-ORDINATOR

Vickie Leney 01306 884054

vleney100@gmail.com

FUNERALS ORGANISER

Brian Wilcox 01372 374730

dbrianwilcox@btinternet.com

WEBSITE MANAGER

Sarah Ward 01372 383350

sarwar_63@hotmail.com

www.micklehamchurch.org.uk

*For information about services for other
denominations see website pages.
Search on 'Churches Together Mole Valley'*



Calendar of Events

November

1	Thursday		
3	Saturday	1 pm 5.45 pm	Wedding in church Westhumble Bonfire & Fireworks
4	SUNDAY	4 th Sunday before Advent – SHOE BOX SUNDAY	
		8 am	Holy Communion
		10 am	Family Service
6	Tuesday	7.30 pm	Parish Prayer Meeting in church
11	REMEMBRANCE SUNDAY		
		8 am	Holy Communion
		10 am	Remembrance Day Service NO SERVICE AT THE CHAPEL
		7 pm	'One Shot' Choral Society's Concert for Remembrance Sunday
<i>Copy deadline for Mickleham Parish Magazine</i>			
14	Wednesday	7.30 pm	Garden Shed's talk on Wildlife in Your Garden. Stepping Stones
16	Friday	9.30 am	Open Day at St Michael's Infant School
17	Saturday	9 am 2 pm	Men's Breakfast. Running Horses Wedding in church
18	SUNDAY	4 th Sunday before Advent	
		8 am	Holy Communion
		10 am	Holy Communion
19	Monday	1.15 pm	Open Day at St Michael's Infant School
22	Thursday	10 am	Juniper Hall's Volunteer Recruitment Morning
24	Saturday	9 am 11 am – 2 pm	Women's Breakfast. Running Horses Nursery's Christmas Fair. Village hall
25	SUNDAY	Sunday before Advent – Christ the King	
		8 am	Holy Communion at the Chapel
		10 am	Holy Communion
		5 pm	First choir rehearsal in church for Carols by Candlelight Service.
26	Monday	3 pm	Tea @ 3.. Mickleham Lodge

DECEMBER DATES FOR YOUR DIARY

Sunday 2 nd	Children's Christmas Workshop followed by Christingle Service
Saturday 8 th	Christmas Wreath & Table Decoration Workshop
Tuesday 18 th	Carol singing in the Chapel ruins, Westhumble
Friday 21 st	Carol Singing Pub Crawl
Monday 24 th	Christmas Eve Crib Service in Westhumble Field

MEMBERS OF THE PAROCHIAL CHURCH COUNCIL

James Aarvold John Banfield Mark Day

Andrew Diamond Jenny Hudlass

Elizabeth Moughton Frances Presley James Riches

Richard Siberry Amanda Wadsworth Simon Ward

Amy Ward Paul Wates Anne Weaver

TOOLS WITH A MISSION (TWAM)

www.twam.co.uk

TWAM is a Christian charity committed to the recycling and refurbishment of tools which then can provide a means for poorer people in developing countries to learn a trade and be able to support themselves and their families. With this practical help thousands of young men and women have benefited from the skills they have learned. They need:

- garden forks & spades saws hammers drills pickaxes etc
- sewing or knitting related tools thread zips scissors
- embroidery items fabric and sewing machines
- wool and knitting needles patterns
- portable typewriters printers and laptops

If you have any of the above which could be used to help someone to have a better quality of life and hope for the future please contact Hilda Burden on 01737 842516.

HELPING HANDS

INCLUDING FOOD FOR FRIENDS

A service for all residents of Mickleham and Westhumble

Examples of services we offer:

- Transport for visits to doctor's surgery or hospital
- Essential shopping / collection of prescriptions
- Changing library books
- Small tasks: eg changing fuses altering clocks etc
- Dog walking / care of pets
- Visiting / befriending
- Home-cooked meals for local families going through difficult times

Requests to Mary Banfield 01372 373912

or leave a message on answerphone.

Callers will be contacted within 24 hours

*More helpers needed – please contact
Mary if you can spare some time.*

Community Directory

Continued from page 13

MICKLEHAM & WESTHUMBLE BOOK CLUB
Bernice Bailey

01306 741310
bpbailey_uk@yahoo.co.uk

MICKLEHAM & WESTHUMBLE BADMINTON CLUB

Membership Secretary Sarah Blake sarah.blake1@uk.nestle.com

MICKLEHAM & WESTHUMBLE CRICKET CLUB

Membership contact Will Dennis 07903 842674
will@micklehamhallfarm.co.uk

MICKLEHAM & WESTHUMBLE HORTICULTURAL SOCIETY

Chairman – David Kennington 01372 362309
www.surreycommunity.info/mwhs davidkennington144@gmail.com

MICKLEHAM AND WESTHUMBLE LOCAL HISTORY GROUP

Chairman – Ben Tatham 01306 882547
ben@thetatham.co.uk
www.hugofox.com/community/mickleham-westhumble-local-history-group-13483/

MOLE VALLEY DISTRICT COUNCIL

Councillor – Duncan Irvine 01306 885001
07738 384287
duncan.irvine@molevalley.gov.uk

THE ARTS SOCIETIES (FORMERLY NADFAS)

Betchworth – Mary Venning 01306 883301

Dorking – Sue Tatham 01306 882547

Leatherhead – Sarah Sheridan 01306 883699

ST MICHAEL'S CHURCH OF ENGLAND (A) INFANT SCHOOL 01372 373717
info@stmichaels-dorking.surrey.sch.uk

Friends of St Michael's School

Co-chairs Danielle Morrison and Debbie Turner
friendsofstmichaels2017@gmail.com

ST MICHAEL'S COMMUNITY NURSERY

WEEKDAY MORNINGS – MICKLEHAM VILLAGE HALL
Supervisor – Hilary Budd 01372 361021
stmichaelsnursery@btinternet.com

SURREY COUNTY COUNCIL

Councillor – Hazel Watson 03456 009 009
01306 880120
hva.watson@btinternet.com

SURREY WILDLIFE TRUST

01483 795440
info@surreywt.org.uk

WESTHUMBLE RESIDENTS ASSOCIATION

Chairman – Holly McLaren 07887 660129
westhumble.residents@gmail.com

WESTHUMBLE NEIGHBOURHOOD WATCH

Lead Co-ordinator – David Allbeury 07860 227451
westhumble.neighbourhood.watch@gmail.com

ADDITIONAL CONTACT INFORMATION

CITIZENS ADVICE

Dorking – Lyons Court 0844 4111 444

Leatherhead – Swan Mews High Street 0844 4111 444

CRIMESTOPPERS

0800 555 111

POLICE Non-emergencies

101

(often quicker to make online report) <https://report.police.uk/>

Neighbourhood Specialist Team – Dorking Rural East

PCSO 8761 Dave Sadler To contact a member of the

PCSO 15904 Sophia Manelfi team call 101 and your call

PC 2799 Sue Gargini will be put through.

General enquiries molevalley@surrey.pnn.police.uk

Babysitting by local teenagers

Those listed below are at least
14 years old..

Freya Pearce 01306 884724

Maisy Presley 01306 882484

Issy Nash* 01306 742762

Amber Miller 01306 883659

Patrick Moran 01306 640043

Katie Light 01306 881953

Ellie Kim 07773 395 575

Philomena Ala 01306 885767

Delphine Ala 01306 885767

Chelsea Edwards 01306 884133

Tatiana Fleming-Smith
**07799 061 288

Rory Lee **07973 360 950

Annabelle Prosser
01306 640643

Skye Moran 01306 640043

* Holidays only
** Parent's mobile number

If you would like to add your
name to this list please get in
touch with

Fiona Roberts-Miller
admin@micklehammag.co.uk
No Charge

Advertising in the Parish Magazine

Please contact

Fiona Roberts-Miller
admin@micklehammag.co.uk

Small ads: a nominal fee is
charged for ads where items or
services are bought or sold.

We have been advised to print
the following reminder:

We cannot guarantee the
quality of the goods and
services offered by our
advertisers.



British Empire Medal Investiture

The editor kindly invited me to go with her and her family to the Investiture Ceremony on 10th October for her British Empire Medal. It was presented by Her Majesty's Lord-Lieutenant of Surrey, Mr Michael More Molyneux, at Loseley Park. It was a wonderful occasion. Medals were presented to eight out of the nine recipients in Surrey, including SueTatham and David Ireland, in front of a small audience of family and friends. The citations and some details of the work of each recipient were read out before the medals were presented individually and photographs taken.

Editor's Note: As both David and I were awarded our honour for 'services to the community of Mickleham', several of the guests at the reception remarked that Mickleham must be quite a lively place.

Distribution of Profits from The Village Party



Juniper Hall Field Studies Centre



St Michael's Community Nursery

St Michael's Infant School

This summer's Village Party was a roaring success, raising an amazing amount for local charities. A cheque for £7892 was presented to Juniper Hall which hosted the event. And both the St Michael's School and the Community Nursery received cheques for £3700.

Congratulations and thanks to the Village Party Committee for organising this event.

Photographs: Angela Ireland



Kate Warren

We are very sad to report the death of Kate Warren on Sunday 7th October. She died peacefully surrounded by family members in St Georges Hospital having never recovered from an unexpected heart attack on 27th September. We will include her obituary in next month's magazine. We send our love and deepest sympathy to Frank and Kate's family.

Community News

Welcome to James Cartwright, the new estate manager for Juniper Hill. He and his wife, Liz have been working in Nairobi. Liz will be joining James next year when her teaching contract in Kenya finishes.

Please let us know if you have any community news such as new neighbours, neighbours leaving, new babies, celebrations etc, do let the editor know at editor@micklehammag.co.uk

Our youngest Reader?



Liz Harper sent us this snap
of her grandson, Freddie



Westhumble's Annual Bonfire and Fireworks Display Saturday 3rd November

Please come to the annual Bonfire and Fireworks Display in Westhumble Field, as usual, at the bottom of Adlers Lane. All from Mickleham and Westhumble and St Michael's School are most welcome, along with all your relatives and friends.

We are keeping to £5 per head (or more if you feel generous) and we would ask groups please to base their donations

on this to ensure the continuation of this event. Bring as many spectators as possible – we need lots of people to blow at the bonfire to make sure it burns well this year!

So have your hats and woollies, scarves and wellies by the door and come whatever the weather.

Please remember that, as last year, our lower insurance premium means that hand-held fireworks are not covered, so PLEASE DO NOT BRING SPARKLERS – we have an alternative.

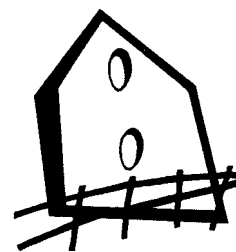
The final touches will be added to the bonfire at 10 am on 3rd November, and

at 5.45 pm Guy Fawkes will lead the Torchlight Procession from the junction of Burney Road, Chapel Lane and Adlers Lane. The bonfire will be lit when the Guy is in place and the procession has reached the field.

There will be collection buckets for your donation at the gates to the field. Please have your money handy to avoid a delay.

Soup and sausages will be available from the barbecue in the field for a small donation.

Neil Mason, Entertainments Secretary
01306 889073



Westhumble Residents Association Request for Funds

The most local form of government is the Parish Council whose activities fall into three main categories: representing the local community, delivering services to meet local needs, and improving quality of life and community wellbeing. Parish councils are funded by levying a "precept" collected with the council tax paid by the residents of the parish. Mickleham has a Parish Council, their 2017 precept was £6,900.

Historically Westhumble, instead of a Parish Council, has had a Residents' Association which performs the same role, although we rely on Mole Valley and Surrey CC to deliver services.

We do not have the precept so must fund ourselves, we are parsimonious, spending little – mainly insurance, lifesaving equipment at the station. Association volunteers claim nothing and bring their own nibbles to meetings.

We have not sought funding for a while. Remember 2011? I know it seems like yesterday – William and Kate got married, Ghaddafi and Bin Laden died

and it was the last time Westhumble Residents' Association collected funds. 2018? Harry and Meghan got married, England had a Summer and it was agreed at the WRA AGM that (rather than collecting a few pounds each year) would request £20 from each household, to cover the next few years – masses easier than collecting a couple of coins a year.

We would like each household to enhance the coffers to the tune of £20. And to the cries 'What do we get for our money?' – our books are available for inspection.

We do act as a liaison for the council and other groups that are required to consult communities. The WRA have influenced the Pru cycle ride, other road closures, traffic calming, parking, Neighbourhood Watch, bus services, lifesaving equipment, local plans and the 'Can we do anything with the Chapel?' project. We have found ourselves too small a voice when it comes to rail timetable changes, bridge repair, kamikaze cyclists, bulls in fields, motor cycle noise etc. But we

try! Some campaigns just run and run. However we do not take a view on neighbour conflicts, nor do we cost as much as a parish council.

WRA needs you. If you want to join the committee there is no election, just let me know and we will find a place for your talents.

Many thanks to those residents who have already paid following the subscription request sent out in the e-mailed WRA Bulletin. If you have yet to respond, please send £20 to Sarah Hart, Hon Treasurer, Pilgrims End, Pilgrims Way, Westhumble RH5 6AP. Cheques should be payable to 'Westhumble Residents'.

BACS payment details: our bank details
• Account name:
Westhumble Residents' Association
• Account number: 80943940
• Sort code: 20-23-97

Please put your house name as the reference for your payment and email Sarah at WRAreasurer@yahoo.co.uk to let her know that you have paid in this way. Thank you.

Holly McLaren, Chairman

The Garden Shed September Garden Visit

Photographs: Pauline Davis & Susie Gowenlock

Unfortunately our visit to Ryman's Garden was cancelled unexpectedly and Saturday 22nd September was very wet, but a few keen gardeners braved the elements and visited the gardens at West Dean which never disappoint.

Set in the grounds of West Dean Arts College, the gardens include a Walled Kitchen Garden with amazing borders, and 13 working Victorian glasshouses, and extensive richly-planted grounds including a stunning 100-metre-long Edwardian pergola. However, it was not the day to explore the fifty-acre St Roche's arboretum. All well worth a visit on a better day.

Nonetheless there was much to see and admire as these photographs show.

Susie Gowenlock



The Gardens at West Dean



Mickleham and Westhumble Horticultural society

Wildlife in Your Garden

a talk by TOM FORWARD

Wednesday 14th November

7.30 pm, Stepping Stones Pub, Westhumble

Tickets £6 at the door – No need to book – Everyone welcome

See the website for more details – <https://www.surreycommunity.info/mwhs/the-garden-shed/events/>
Any Questions - Contact Pauline Davis 07759 646 353 or paulinemdavis@gmail.com
Susie Gowenlock 07768 923 088 or susiegowenlock@gmail.com

NEED A CARER?

Highly experienced qualified carer available

Hours to suit your needs

Cheryl 07810 881 267



Extensions and alterations often require a
Structural Engineer

Robert Wynter & Partners Ltd

01306 879875

Book House Vincent Lane
Dorking RH4 3HW

We provide the best possible care for your feet

**Book your appointment:
01372 454583**



**Bookham
Chiropody & Podiatry Clinic**
Diagnosis, Expert Treatment & Professional Care
for Your Feet

29 High Street, Great Bookham KT23 4AA
www.bookhamchiropody-podiatry.co.uk

Painting

Decorating tiling
Curtain & blind hanging
Wallpapering
Furniture assembly etc.

- Fully insured
- Free estimates
- References available

Tel: Martin 07770 441 201



Vivien Cresswell
Made-to-measure Soft Furnishings

Curtains Roman Blinds Cushions



Extensive range
of fabrics

01737 843858

www.cresswellscurtains.co.uk

Mike Palmer

Electrical Services

Part P registered electrician



**From additional lighting and sockets
to complete rewires**

Fully insured Registered with the NICEIC

07866 930483 mike@mikepalmer.biz

Boxhill Way Strood Green Betchworth RH3 7HY



KING WILLIAM IV

Our thoughts now turn to November, having enjoyed a lovely sunny October. Although we did manage to time our family holiday in Crete with a medicane, which we now know is a very wet Mediterranean hurricane!

Between 1st and 11th November we will be honouring those who served in the First World War during this Centennial of Armistice Day. We will raise funds for the Royal British Legion by selling cakes & WW1 dishes, so we hope you can pop by and join in. And we have our free annual fireworks on Sunday 4th November at 6.30 pm.

Hope to see you soon, Eamonn & Anne

Byttom Hill Mickleham 01372 372590 www.thekingwilliamiv.com



Juniper Hall Volunteer Recruitment Morning Thursday November 22nd – 10 am to 1 pm

Following the success of the Village Party held at Juniper Hall at the end of July, we would very much like to build on that relationship by inviting you to come and have a go at helping us to maintain the grounds of Juniper Hall.

We are looking for local people to come and join our small team of volunteers who meet regularly on a Thursday. Tasks will vary seasonally and can range from weeding to scrub clearance, mowing to litter picking, something for everyone. If you have some experience that would be fantastic, but mainly we

are just looking for enthusiasm. We are a social group and enjoy a good old natter while we work. You do not have to be retired to join us, we've had Duke of Edinburgh students help us out too. You just need a bit of spare time and the desire to muck in. Come and see what's on your doorstep, meet new people, keep fit, learn something new, enjoy the outdoors and fresh air and above all, have the satisfaction of a job well done.

A brief outline of the morning will be a tour of the grounds at 10 am followed

by tea or coffee and homemade cake. We will then work on a task to take us up to 1 pm. This task will give you a good idea of what we do at Juniper Hall and an opportunity to see if it is something you would like to continue doing. We will provide any tools required, but please wear suitable clothing and footwear for working outside and a pair of work gloves.

Please contact Sarah on s.bradford@field-studies-council.org if you are interested in attending so we can ensure we have enough cake, oh, and tools!

Fair use, <https://en.wikipedia.org/w/index.php?curid=16877223>



Global Art Hunt for David Shepherd Originals New Art Network to Honour a Wildlife Art Heritage

A major new worldwide search has been launched, to track down hundreds of original artworks by world famous wildlife artist David Shepherd.

If you own an original David Shepherd painting or sketch and would like to join the 'David Shepherd Originals Circle' to share your stories of this remarkable man and catalogue your artwork, you can register on DSFW's website at www.davidshepherd.org/circle.

Lifeboats Christmas Fair Tuesday 20th November 9.30 am to 1 pm Dorking Rugby Club, Brockham RH3 7LZ

Pick up your Christmas presents or cards and have a coffee and cake with friends and neighbours in a friendly and convivial atmosphere.

We have some familiar stalls and some new professional stall holders as well as the RNLI stalls - Christmas cards, souvenirs, jams, cakes, books, plant and raffle. Plenty of free parking.

We would be very grateful for raffle/tombola prizes and cakes, biscuits or scones. You can also bring your old or broken jewellery, any holiday money (coins and notes) that you no longer want and empty ink cartridges (not Epsom or Brother).



National Trust Box Hill

Autumn has slipped by and winter is nearly with us. There have been some spectacular sunsets and the mist lying below the hill, some mornings, has been magical. The leaves are turning golden and the children have stopped looking for berries and have been on a fungi hunt instead with a special trail devised for the half term holidays.

Creamy mushroom soup has been on the menu but also, we have had a squash and red pepper, Tuscan bean soup and honeyed swede, but for those who want something lighter the chefs have been busy making individual pork and apple pies.

Two months until Christmas and the Café Shop has some lovely goodies for sale. There are special accompaniments for the Christmas meals, gingerbread

fudge, Xmas puddings and, of course, Christmas cards as well as calendars and diaries for 2019.

If you haven't managed to make it up here we are still serving a special afternoon tea on Wednesdays. Cakes devised by Carlo, a special sandwich selection, scones and clotted cream and a selection of teas. December will also see other events happening such as wreath making, and children's crafts so keep an eye on the website as these events get booked very quickly. Please call us on 01306 888793 option 1 to make a booking or for more information.

With the quieter days it is especially nice to see our local residents as we have more time to chat, so we look forward to seeing you soon.

Suzanne Taylor
Retail & Catering Manager

Paintings & Pots: The Pixham Artists Exhibition

5th – 11th November – Denbies Wine Estate
Mon: 1-5 pm / Tues – Sat: 9.30 am – 5 pm / Sun: 10 am – 4.30 pm

Domestic Appliance Repairs

30 years' experience repairing and installing all gas and electric domestic appliances



- Cookers Microwaves
- Dishwashers
- Washing machines
- Fridges / Freezers
- Water coolers
- Coffee machines
- Tumble dryers

Contact: Andy 07895 719 706
kirk21stcentury@aol.com



Julie Watts Family Law



AN AFFORDABLE AND EXPERIENCED PROFESSIONAL ALTERNATIVE TO TRADITIONAL SOLICITORS

- Divorce • Arrangements for children • Finances

- Court Proceedings

PROUD TO PROVIDE A DIFFERENT KIND OF SERVICE

- Affordable fees • Straight-talking advice
- Practical real support

Contact me for a consultation

07808 572157 juliewattsfamilylaw.co.uk

07871 051661 / 01372 458616
timskerrittgroundworks.co.uk

TimSkerritt
LANDSCAPE & GROUNDWORKS

Turn your vision into a reality

Tim Skerritt Landscape & Groundworks offers a comprehensive range of services to both commercial and domestic clients across Surrey.

From hard landscaping to extensive site excavations, we offer a high quality, honest, reliable and competitively priced service, guaranteed to meet all your needs. Contact us today to find out more.



Open
Monday to Friday
8 a.m. - 5 p.m.
& Saturday
8 a.m. - 1 p.m.

All leading makes of lawn mowers

& garden tractors catered for

Reasonable rates

Free estimates & friendly service

Paul White Bookham 01372 458008

Need help with your accounts?

If you run your own business you will appreciate how difficult it can be to keep up with your accounting paperwork.

However meeting deadlines and understanding the financial health of your business are crucial to avoiding penalties and ensuring that the hard work you put in pays off where it matters – in your pocket

- Tailored accountancy local to Dorking – saving you time
- Fixed fees – saving you money • Free Xero software – simple invoicing

Call today to arrange a
free no-obligation
consultation

01737 652 852

esther@a4cgroup.co.uk
natasha@a4cgroup.co.uk



Betchworth Electrical Contractors

07966 239644

- Specialist in fault finding • Complete rewiring
- Additional lights and sockets
- Specialist in pools and hot tubs • Garden lighting and power
- Electrical installation condition reports
- Telephone and computer cabling • Central heating controls
- Smoke alarms to BS5839-6:2013



All work is in compliance with
BS7671:2008 Amd. 3:2015



Dorking Pest Control Services

Local Authority Approved Contractors



Our Services include: Wasps Bee Swarms Hornets Rats Mice
Squirrels Fleas Flies Ants Cockroaches Bed Bugs
Rabbits Moles Foxes and Deer



- Domestic Commercial and Industrial • Contract Work • Preventative Control Programmes

Experts in pest control throughout Surrey

Office: 01306 743001 Ivor: 07710 117491 Chris: 07971 519415

www.dorkingpestcontrol.com



Although the weather forecast was not great for the morning of 28th September, it turned into a sunny day and we had a great turn out. There were lots of donations of cake so we

were spoilt for choice. The farm animals enjoyed having so many visitors and the garden, although definitely moving into its autumn mode, still managed to put on a good show of colour. My initial tally from the morning was just over £1,100. I still have a few donations coming in so I think the final total will be nearer £1,200 which is our best yet. Many people from the parish came to this special coffee morning in aid of Macmillans who do such important work. I do appreciate the local support for this event and it is heartening to be able to send them such a great donation.

Liz Absalom



The Garden Shed's
Christmas Wreath & Table Decoration Workshop
Saturday 8th December
9.15 am – 12.30 pm
Mickleham Village Hall

£25 Including choice of wreath or table decoration, coffee, tea, mince pies and complimentary mulled wine.

Limited places - booking essential

More details on website:

<https://www.surreycommunity.info/mwbs/the-garden-shed/events/>

For further information and to book contact:

Pauline Davis 07759 646 353 or paulinemdavis@gmail.com

Susie Gowenlock 07768 923 088 or susiegowenlock@gmail.com

Mickleham Choral Society presents

A Carol Party!

A fun-filled evening with both traditional and humorous Christmas music and readings.

Mulled wine and festive food included

Friday 14th December

Mickleham Village Hall 7.30

Tickets: £12 Available from Anne Weaver
01306 883932

weaver_anne@hotmail.com

INSPIRATIONAL Box Hill School

On Saturday 15th September, Box Hill School were delighted to open the doors to Dalewood House, as part of the annual Mole Valley District Heritage Open Days, in association with the National Trust.

Throughout the day, we welcomed a number of visitors and provided tours around Dalewood. It was a perfect opportunity for Box Hill School to celebrate its beautiful building, share the diverse history and architecture of the school and give the local community the chance to explore Dalewood House for themselves on a guided visit. Amongst the highlights of the building are the stunning stained glass windows depicting scenes from nature, the seasons, English pastimes, Aesop's Tales and literature as well as the ornate wood panelling and glorious grand staircase and reception hall. It is a magnificent example of the work of the renowned architect John Norton who also designed the Tyntesfield estate in Somerset.

Come and see BHS's production of

BLOOD BROTHERS

Wednesday 5th – Friday 7th December

See back cover for further details



Can you translate this diagram into words? Say what you see.

ERR
ERR

Answer on page 26

TONY WINCH
**CARPENTER, JOINER
 & CABINET MAKER**
www.tonywinch.com
01306 742373
07969 016 924

Shakespeare Electricals
 Your local electrician



**Fully qualified
 and insured**




10% off labour costs with this advert
Call Matthew on 07783 553880
www.shakespeare-electricals.co.uk

Get IT Fixed, Get IT Connected
 Expert Repair & Maintenance



Brockham based. No call out charges. Fully transparent quotations with no hidden costs. We make technology work for you.

Call us now on **01737 845980** ChalkHill Systems
www.chalkhillsystems.co.uk

Building Plans
 For home improvements & extensions

*Including planning & building regulations
 Fast efficient service at competitive rates*

MICHAEL LLOYD CEng MICE MINT
 For free consultation:
 Phone: 01483 205479 or 07958 791 402
 Email: michael@lloydplanning.london

R A BUTLER
 INTERIOR AND EXTERIOR
PAINTING & DECORATING
 OVER 30 YEARS' EXPERIENCE



**BUILDING
 REPAIRS
 UNDERTAKEN**



PATIOS DECKING ETC NO JOB TOO SMALL
 LOCAL REFERENCES IF NEEDED
01372 372586 / 07776 256131

OSTEOPATH
NICK WOOLLEY
 BSc (Hons) Ost
 Osteopathy for all ages

Also offering Cranial Osteopathy and
 Myofascial Acupuncture needling treatments

For advice or an appointment
01372 379270
www.Headleyosteo.com



GARDENING
 Free quotations

Contact Robin 07740 308 490 contourgardening@outlook.com
www.contourgardening.com

SERVICES

- Gardening Maintenance —
- Hedge Trimming Specialists —
- Garden Design —
- Fencing —
- Patio Construction —



It feels like autumn has only just begun, but we are already busy making plans for our Christmas Fair, which takes place this year on Saturday 24th November, from 11 am until 2 pm.

Open to all, the fair is always a spectacular event, and this year should be no exception. Our most popular attraction, unsurprisingly, is Father Christmas. He comes to visit the children in our gingerbread house, which is transformed into a grotto for the day. Each child has plenty of time for a chat with the fellow in red, and if they have been good there is a gift too. This year, we will have limited slots available on the day to book in and visit Father Christmas, so if you know someone who might

The Most Wonderful Time of the Year

like to meet him, please come along! We will have a BBQ, tea and cakes, tombola and all the usual festive fare. There are clearly a lot of talented parents and local residents among us too, as our stall holders this year will be selling homemade items including beeswax food covers, eco-friendly household products and jewellery. You can try your hand at making your own soap or pick up a gift from the Body Shop. Perfect present buying opportunities for your loved ones!

On the subject of presents and shopping, just a reminder that anyone can sign up for Easy Fundraising, a scheme which means when you shop online the nursery receives a percentage of your total spend, at no extra cost to you. When shopping online many retailers give a percentage of your total spend to the nursery (their way of giving to charity) and it doesn't cost you a penny. So far, the nursery has received over £1,000 from the scheme, and it's a really valuable contribution to our budget. There are more than 3,000

shops and websites registered, including Amazon, John Lewis, Sainsbury's, EBay and Argos. It's simple to do – sign up at EasyFundraising.org.uk select 'St Michael's Community Nursery – Dorking' as your cause and carry on shopping! Even better, if you use the link below we automatically get £5! <https://www.easyfundraising.org.uk/invite/37LIDI>

Away from Christmas, we've had a significant interest in bouncy balls this term, we have a sweetie jar that was full of bouncy balls, a few have bounced away, but the children have had great fun with them and have even had a chance to make their own. We have also enjoyed potato rolling, the cars and garage have been out for our vehicle enthusiasts, and we've used loose-part buttons and Cuisenaire rods for pattern making and sorting.

We also joined with St Michael's School for our Harvest Festival celebrations, with a craft workshop to mark harvest, followed by a special service at Mickleham Church.

Debbie Turner



Please spread the word about
ST MICHAEL'S INFANT SCHOOL'S OPEN DAYS
 for prospective children / parents.
 Details on next page



Mickleham Village Hall Dell Close

Weekdays 9.15 am - 12.15 pm (term time)

WITH OPTIONAL LUNCH CLUB

On Mondays and Thursdays there is the option for children to stay until 2.45 p.m.

Maximum 26 children per session

• playing naturally • learning naturally

We offer an excellent range of pre-school activities for 2½ to 5 year-olds where they can learn through play in an informal friendly atmosphere.

Contact us for more information about admissions

01372 361021 www.stmichaelscommunitynursery.co.uk

Tuesday Toddles

A new friendly group in Mickleham for kids aged 0-5 years to play along side their Childminder or Registered Nanny

Mickleham Village Hall

Every Tuesday Term time only 9.30 - 11.30 a.m.

For more information please contact:

Natalie 07790 318 653 or ask to join our closed Facebook group for Tuesday Toddles for regular updates.



Box Hill Bugs Outdoor Toddler Group

For more info or to register contact:
www.nationaltrust.org.uk/box-hill/features/box-hill-bugs
or phone 01306 878554

BRAIN TEASER answer: To err on the right side



OPEN DAY

St Michael's School C of E Infant School

School Lane, Mickleham RH5 6EW

A great school in a beautiful setting

The perfect place for your child

Outstanding (SIAMS 2017) Good (OFSTED 2016)

Please come and join us on:

Friday 16th November 9.30 - 11 am

or Monday 19th November 1.15 - 2.45 pm

(Presentations at 9.30 am and 1.15 pm)

Head of School: Mrs Sandra Peers Executive Head: Mrs Paula Bliss

www.stmichaels-dorking-surrey.sch.uk 01372 373717

'A hidden gem' 'Where learning flourishes through natural curiosity'

St Michael's is just off the A24 between Dorking and Leatherhead
Park near Frascati Restaurant or at the Village Hall, Dell Close

Being Busy Bees at St Michael's

Autumn term is always a busy one at St Michael's and this year has been no exception. We have welcomed a new class of children and their families to the school, and they have settled in extremely well already.

The Friends of St Michael's hosted a welcome (or welcome back!) party for all the children in October, and they enjoyed a range of games, crafts and music. It was the perfect way to start the term off and get to know others in the school.

This term has seen the introduction of 'busy bee' rules to reflect the school's values, and the behaviours we would like to see from the children. These are:

- be mindful
- be hardworking
- be honest
- be kind

Older children can work towards a Busy Reader award, an incentive to encourage regular reading both at school and at home. On Fridays there is a Busy Bee assembly where the children's efforts are recognised – this includes their endeavour in class or their achievements outside school, for example sporting or club successes.

Looking ahead to the end of term, our focus naturally shifts to Christmas. This is a really special time in school. Many Christmas topics are incorporated into the curriculum across the school, and as the excitement levels begin to rise amongst the children, we have the

Christmas Fair (joining the Nursery once again) on 24th November and our Christmas Story Telling Night on 7th December. The children return to school in the evening to find their classrooms magically transformed into a winter wonderland, where they enjoy festive stories and crafts. Meanwhile parents and carers can enjoy mulled wine, music and chat in the hall.

As we did last year, the Friends of St Michael's will once again be offering local residents high quality Christmas trees for sale. Available in a variety of sizes, the trees can be collected from school on Sunday 2nd December. Profits from the sales will go into our fundraising pot which is focused on raising money to install acoustic 'clouds' in the hall. These will improve the acoustics, particularly for children



**St Michael's
School**

www.stmichaels-dorking.surrey.sch.uk

with additional needs, who sometimes find the echo and reverberation overwhelming at busy periods such as lunch and assemblies.

For more information on this, or any of the Friends activities at St Michael's, please contact us on: friendsofstmichaels2017@gmail.com

Debbie Turner

Co-Chair, Friends of St Michael's

Photograph: Debbie Turner



Our Welcome Party

St Michael's Community Nursery

Christmas Fair

Saturday 24th November

Mickleham Village Hall

11 - 2pm

**Free
Entry**

The Body Shop, handmade gifts, books
children's activities, BBQ, Santa's grotto and much more

SOLUTION TO THE OCTOBER CROSSWORD

Across: 9 Antenna, 10 Tsunami, 11 Hard hat, 12 Caramel, 13 Pepperoni, 15 Fluke, 16 Cadaver, 19 Geishas, 20 Worms, 21 Slingshot, 25 Literal, 26 Fishier, 28 Prompts, 29 Cholera.

Down: 1 Wash up, 2 Stir up, 3 Inch, 4 Tattoo, 5 Stocking, 6 Putrefying, 7 Badmouth, 8 Fielders, 14 Eavesdrops, 16 Cowslips, 17 Duration, 18 Restless, 22 Infect, 23 Heifer, 24 Thread, 27 Slow.

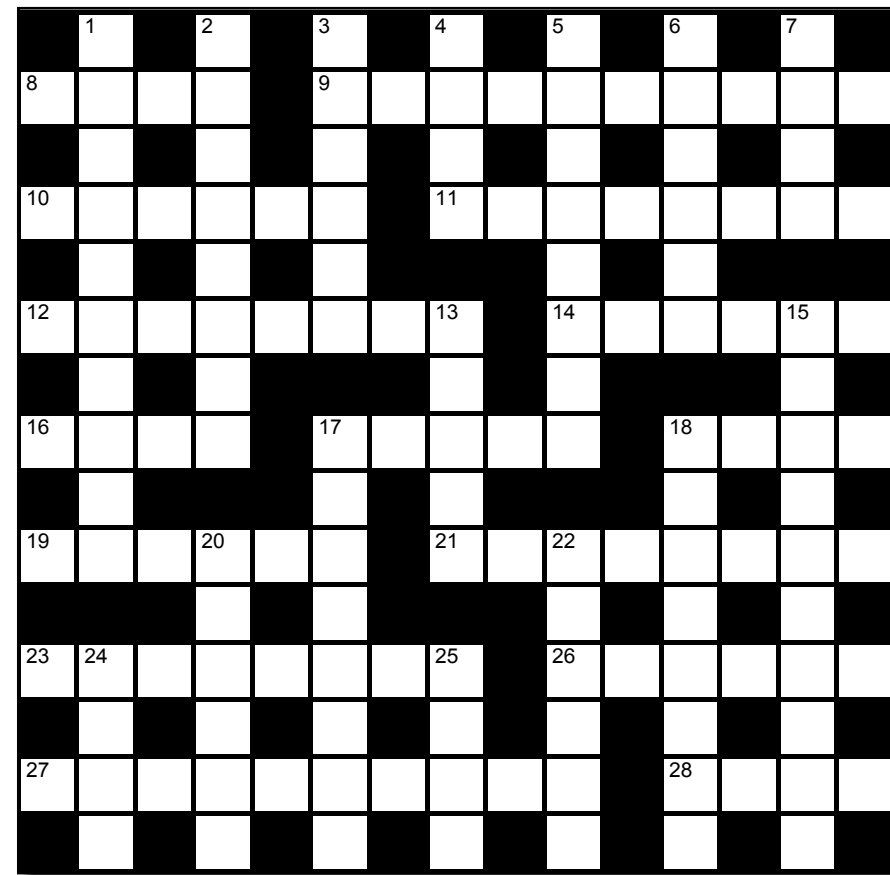
Andrew Tatham



Cryptic Crossword

Across

- 8 I am Spanish and starting to substitute for vegetarians (4)
9 Road in city weaves around something that begins with 'A' (10)
10/19 Begin and list strange places to nosh (6,6)
11 The Stones throw around mad leers (8)
12 'The Sweet Stuff', nickname for Olympian's female fans? (8)
14 Brussels negotiator starting without direction – such an ineffectual man (6)
16 Gag when half-cut, so found in spew (4)
17 Joanna Player with nothing in disorder (5)
18 Horseshoe bat has inner cleansing (4)
19 See 10
21 Stuff grown out of a little Newfoundland cream (5,3)
23 Mix tape including 'Libertine Squawker' (8)
26 Phone home, the film reel before is 'Speed'! (6)
27 Make angry ape's genitals limp by cutting out apple's pips (4,6)
28 Mole could be top nuisance on Centre Court (4)



Down

- 1 Patience could be a result of cooking with prime cocoa (5,5)
2 I ban that outrageous villager (8)
3 189 is the answer for Elizabeth and Philip when you read out Proverbs? (6)
4 Spots old Cockney's taxi, by the sound of it (4)
5 Skinned deer swirls about in the air (8)
6 At the front, circling round mid-air fruitlessly (2,4)
7 A policeman hanging upside down around drug centre, that's the filth for you! (4)
13 Slough is determined to be overwhelming (5)
15 Fare for the traditional house party that is not pretentious (7,3)
17 Liner could be one to limit access, so sails out awkwardly (8)
18 A member since 1908, we hear, floats about and away (3,5)
20 Here goes! 9, 10 + 19, and 26 all have these (6)
22 Heart could be led by this type of prose (6)
24 Maid Marian imaginatively rings a tune (4)
25 Swimmer is a freak for backstroke (4)

The answers to the October crossword are on page 27.

Photograph: Ben Tatham



This year's hot, dry summer has resulted in a bumper crop of grapes throughout the country. As we go to press Denbies Vineyard has produced an astounding 410,000 bottles.



6 en-suite rooms from £89 per night including breakfast
OPEN

Monday – Saturday: noon – 11 pm

Sunday: noon – 10.30 pm

BREAKFAST (open to non-residents) **SERVED**

Monday – Thursday: 7.30 – 9.30 am; Friday & Saturday: 8 – 10 am

LUNCH & DINNER SERVED

Monday – Thursday: noon – 3 pm & 6 – 9 pm

Friday & Saturday: noon – 3 pm & 6 – 10 pm

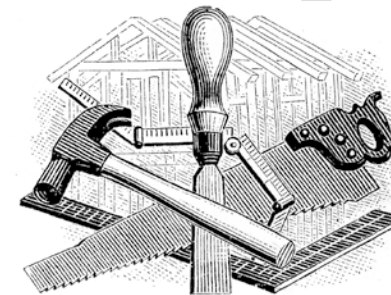
Sunday: noon – 6 pm

The Running Horses, Old London Road, Mickleham, Nr Dorking, Surrey RH5 6DU
Call Us: 01372 372279 Email: book@therunninghorses.co.uk

J S Wilson

Mickleham

Carpentry & Building Services



Extensions ~ Conversions
Refurbishments ~ Property Maintenance
Fully guaranteed ~ Fully insured

One call WILL solve it all

Contact Jason on: 07761 926684 or 01372 379359
jswilsonconstruction@gmail.com



**RESIDENTIAL • COMMERCIAL
AGRICULTURAL • SCHOOLS • ACOUSTIC
HOARDING • GATES • SECURITY**

RICHARDSON & BRADS FENCING LTD
T: 01306 640 143 - 01483 414 74
E: INFO@RBFENCINGLTD.CO.UK
W: WWW.RBFENCINGLTD.CO.UK
A: 83 SOUTH STREET, DORKING, SURREY, RH4 2JU
UNIT 45 MARTLANDS INDUSTRIAL ESTATE, SMARTS HEATH LANE, MAYFORD, GU22 0RQ

John Wadsworth

INDEPENDENT ESTATE AGENTS



CALL NOW FOR YOUR FREE VALUATION

01372 450500

www.johnwadsworth.co.uk sales@johnwadsworth.co.uk

A professional efficient and friendly service

Neil A Mason

Established 1976



All electrical & plumbing work undertaken

Inspections and Testing
Extra Points Rewiring etc
Security and Emergency Lighting
Temporary Power and Lighting Hire
Public Address and Sound Systems
Installed or For Hire
Complete Bathroom and
Fitted Kitchen Installation

WESTHUMBLE

Telephone: 01306 889073

INSPIRATIONAL
Box Hill School
PRESENTS

BLOOD BROTHERS

THE PLAY

An amateur production of Blood Brothers, the play,
by special arrangement with Samuel French Ltd.

**5th - 7th
December**

7.30pm

**McComish
Hall**

Tickets available from Box Hill School Dalewood Reception

£15 adult £7.50 child & concessions

REFRESHMENTS INCLUDED

Content suitable for children aged 12 or above

DAVID TOBITT CARPETS

FINE CARPETS SUPPLIED AND FITTED

*We have over 30 years' experience
working in Dorking and the
local area*

A comprehensive range
of carpets available

We can bring samples
to your home

Advice given on all
types of carpet work



**WE TAKE A PRIDE IN
WHAT WE DO**

01306 885032

www.davidtobittcarpets.co.uk

MARTIN BURGESS

LANDSCAPE AND GARDEN DESIGN



CONSULTATION SERVICE FOR
GARDEN PLANNING PLANTING
AND MAINTENANCE

01737 842289 / 07966 183395

HART SCALES & HODGES SOLICITORS

We have been serving the Dorking community since 1782 and are proud to support our local parishes

Our services include:

- Buying and selling your home
- Extending your lease
- Commercial property
- Inheritance Tax planning
- Care fees and Asset protection planning
- Setting up a trust
- Wills and Probate
- Lasting Powers of Attorney
- Divorce Separation and Children
- Employment for employer and employee
- Litigation and dispute resolution
- Business advice

Please call us on 01306 884432 for a FREE initial consultation to discuss your requirements

www.hartscales.co.uk