

MICKLEHAM PARISH Magazine

A community magazine for Mickleham and Westhumble



A.N. Colwell 1984

October 2021

PROFESSIONAL
**CARPET & UPHOLSTERY
CLEANING**

- Ⓞ Local family running company
- Ⓞ Over 100's 5-star Reviews
- Ⓞ Award-Winning Customer Service
- Ⓞ Safe for Kids, Pets, and the Environment
- Ⓞ Effective against dirt & stains from drinks, food, makeup, pets & more



**SURREY
MAIDS**

- | | |
|--------------------------------------|------------------------------------|
| REGULAR CLEANING | DEEP CLEANING |
| • Professional Equipment | • Moving out/in services |
| • Trained Staff • Task List Provided | • Seasonal Cleaning • Tenancy |
| • DBS Checked • Fully Insured | • Oven Cleaning • Windows Cleaning |
| • Flexible Hours • Easy Payments | • Commercial Cleaning • Schools |

PATTY PLUS 01306 866288
SERVICES LTD OFFICE@PATTY.PLUS
WWW.PATTY.PLUS

Bullimores



Accountants for Life
Tax • Accounts • Probate
Inheritance Tax &
Executorship

T: 01306 880880

E: partners@bullimores.co.uk

W: www.bullimores.co.uk

Bullimores LLP licensed to carry out the reserved legal activity of non-contentious probate in England & Wales by the ICAEW

MICKLEHAM PARISH Magazine

Christ Church, Ottershaw

October
2021

Mickleham
Parish
Magazine

A community magazine for Mickleham and Westhumble published under the auspices of Mickleham PCC with an independent editorial panel.

The magazine is published at the beginning of each month except January and August.

COPY DEADLINE
NOVEMBER
MAGAZINE
Sunday
10th October

send to:

Sue Tatham
St Anthony, Pilgrim's Way
Westhumble
Dorking RH5 6AW
01306 882547

editor@micklehammag.co.uk

Contributions in any form are welcome as are good quality photographs. There is no charge for advertising local charity and community events. However the editors reserve the right to shorten omit or reformat articles submitted for publication depending on space.



Printed by Holbrooks Printers
Portsmouth

Hello everyone

I am really looking forward to moving to Mickleham and meeting you all, once the sad farewells and goodbyes have been said in Ottershaw. I am excited at what lies ahead once I have moved in to the lovely rectory and begun to work with the church, started to learn more about the community and explore the beautiful countryside.

As I write this, I am starting to turn out old papers for shredding and items for the bric-a-brac stall which is part of a fundraiser for Christian Aid. I am amazed at some of the things I have found, and they do bring back memories. I guess it is what we all do when we move but it has struck me that it is symbolic of leaving behind what is no longer needed and taking with me those things which will be helpful. I believe that this will enable me to be as effective as I can be as the priest for Mickleham, recognising that Mickleham church and community are unique, and will have both similarities to and differences from where I am now. I know my ministry needs to be adapted to the setting, but I will bring with me all the relevant experience, knowledge and resources that I have gathered through the years. I have worked in a church setting for nearly 25 years, 17 of which have been as an ordained minister, so lots of experience and lots of paper and books to sort!

I am excited to be joining a church family which is welcoming, caring, inclusive, and flexible. This is what I glimpsed when I visited for interview and what I am sure I will experience as I join you. Together I believe that we can continue to grow in these ways so that our church is as accessible as possible for those who are yet to join us. The gospel is good news for everyone, and church is a great way to explore and enjoy all that God offers us, while recognising that God's love is not confined to Christians or the church but encompasses the whole world. The church, in every location aspires to share that love by being an integral part of the local community and reaching out to care and support and contribute in all the ways it can. I was impressed with what is already happening and will want to encourage the church to continue to be active in this way.

I am pleased too, that in recent years Christians have recognised that we need to show more love and care towards our natural environment. The church is part of the world and through prayer and action can support causes such as justice for the oppressed, resources for the poor, help for the afflicted, rescue for the persecuted and combating climate change. At a local level we can work with the community to encourage environmentally friendly initiatives.

To do these things well we will need to be confident of the eternal love of God for each one of us, his adopted children, and seek to understand his will and purpose for our lives through discipleship. We can only respond to that love by giving of ourselves in worship and in service, and in giving of time, resources, and money. The Diocese of Guildford has a vision statement 'Transforming church, transforming lives'. This recognises that the church needs transforming by God to become more like the Body of Christ, individual Christians need transforming so that we become more like Jesus and society and communities need transforming so that they become more cohesive, more united, more caring. By working together, directed, and empowered by the Holy Spirit, I trust that we will be transformed and will achieve transformation together.

Sandra

Sandra Faccini
Your soon-to-be resident priest



**WELCOME
BACK
WE MISSED
YOU**

Stepping Stones

MORE THAN JUST A PUB

RESTAURANT & ALFRESCO DINING

CAFÉ-LOUNGE BAR

GARDEN WITH MARQUEE AND OUTSIDE HEATING

POP UP GENERAL STORE

SERVING BASIC ESSENTIALS, FRESH FOOD, GROCERIES AND LOCAL PRODUCE

TAKE OUT / INTRODUCING LOCAL DELIVERY

OFFERING LOCAL GINS-ALES-WINES AND CHEESE

01306 889932

steppingstonespub@gmail.com

www.steppingstonesdorking.co.uk

OPEN FROM 11 AM

Please place your pre-orders before 3pm for deliveries and takeouts for the evening

Sherlock Funeral Service

Sherlock Funeral Service is an Independent family owned business, established over 100 years

- Private Service Chapel & Rest Rooms
- Home visits arranged if required
- Pre-Paid Funeral Plans available
- Free Parking

Telephone: 01306 882266

Trellis House, 190 South Street, Dorking RH4 2ES.

Email: office@sherlockandsons.co.uk



Funeral Directors & Monumental Masons



St Michael's Church Services

See calendar on centre pages for details of all services

10 am Sunday Services also available on Zoom

Joining information for both Zoom and telephone users is available in Pews News Online each week. If you would like to join us by Zoom then contact Alison Wood for the codes or to ask her to include you on the emailing list for Pews News: admin@micklehamchurch.org.uk / phone 01372 376443. We hope as many of you as possible will be able to join us for worship.

Please refer to Pews News Online for the latest information. If you missed any of the services, or would like to revisit them, all are available on the church YouTube channel:

<https://youtube.com/channel/UCl4pbewCT91iZhcd0EJBlw>



Bible Study Groups Monday Evening Chapel Group 8 - 9 pm

Contact Amanda Wadsworth
aewadsworth@hotmail.com

Thursday Morning Study Group 11 am - 12.30 pm

Contact Alison Wood
01372 376443
alison.wood29@btinternet.com



First Saturday of the month Coffee Morning at Westhumble Chapel

Saturday 2nd October
Come along between 10 am and noon
for coffee and cake. Free drinks for children
Everyone welcome

For further information call Jonathan Blake 07787 126966

Parish Prayer Meeting

Tuesday 5th October 7.30 pm in church
Everyone welcome.

Men's and Women's Saturday Breakfasts

A social gathering open to everyone



MEN'S BREAKFASTS THIRD SATURDAYS

THE RUNNING HORSES

9 – 10 am

16TH OCTOBER

Book with: Andy Diamond
diamo1@hotmail.co.uk

WOMEN'S BREAKFASTS FOURTH SATURDAYS

THE STEPPING STONES

9 – 10 am

23RD OCTOBER

Book with: Stephanie Randall
0773 6933 482
srandall55@gmail.com



HARVEST SUPPER

QUIZ and RAFFLE

Saturday 2nd October

7.30 pm at Mickleham Village Hall, Dell Close, RH5 6EE

Delicious home-cooked food with fabulous puds – Pay bar

Tickets £10 for adults and £5 for children under 12

Contact Frances Presley on 01306 882473 jasempres@gmail.com
Mary Banfield 01372 373912 mgbbmw@aol.com

If you can help with the food, please contact
Sarah Blake 07736 235709 SarahJBI@outlook.com

Offers of raffle prizes and help on the day will be gratefully received by Frances Presley



St Michael's Church Community Group

That this new St Michael's Church Group is nearing the end of its first year is evidenced by the fact that we are already pre-planning a repeat of last year's debut event...the Christmas Advent Windows. This year, with, hopefully fewer Covid restrictions, there is even more of an opportunity for meeting up with WhatsApp or Zoom faces, and more mulled wine!

Meanwhile, as we write, we have just completed Heritage Weekend, which welcomed a total of 106 visitors through the church doors. One lady was particularly keen on taking snaps of the font. She had been in the church only once before, '60-odd' years ago, for her baptism! Another couple were re-visiting all their marriage/honeymoon venues for their Golden Wedding celebrations.

David Fishwick is to be particularly thanked for doing three 1-hour 'drop-in' recitals of organ music by Bach, Handel, Elgar, Dubois and others, including four renditions of Bach's Toccata and Fugue! Thoughtfully too, on the Saturday, the anniversary of 9/11, he included 'The Star Spangled Banner' in his repertoire.



'David Fishwick finishing the Bach!'

Thank you also to Wendy Wyatt on Bells, and to Carole Brough-Fuller for once again laying out the Graveyard Trail.

With the smell of autumn in the air, the FoodBank needs its usual seasonal boost. This has been an impressive year in terms of contributions overall, and maintaining continuity. Food

Bank reminders may sometimes seem repetitive, certainly, but demand is continuous, and with the allocation of Afghan and other refugees into Mole Valley, the need this winter will be just as high. Thanks to all regular and irregular givers. Both donation locations remain available. Mark Day



Following a very successful and well attended Tea@3 in the garden of Old House on 13th September people have been inquiring about the next Tea@3.

Due to the uncertainties of the current Covid situation it is not possible to announce a date and venue at the moment. Please look at Pews News for further announcements.

We look forward to seeing you when we can resume.

Any enquiries to Julia Siberry
01372 375303

The Food Bank

While we are all enjoying the end of lockdown and going into some shops without a mask, please remember the families who are still struggling to make ends meet. Especially those with children who have been on holiday for six weeks and wanted not only lunch every day but also have been asking for ice creams, snacks, chips – you name it. Some parents may well be looking at bare cupboards and empty purses, so please keep the donations of food coming as you have been doing over the past year or so. Donations can be left at Mary Banfield's house which is at the end of the first turning

to the right off Mickleham Hall's drive, and also in Westhumble at Sue Tatham's, seventh on the left in Pilgrims Way .



If it would be easier for you to donate money you may do so via Churches Together in Dorking who can buy food under priority buying arrangements.

Name of Account:
Churches Together in Dorking
Sort code: 405240
Account No: 00016313
Our Ref: Foodbank

LOCAL FOOD BANK COLLECTION POINTS
MICKLEHAM
Garden Corner off Old London Road
Mary Banfield 01372 373912

WESTHUMBLE
St Anthony, Pilgrim's Way
Sue Tatham 01306 882547

Superb professional
cleaning of carpets
oriental rugs
upholstery curtains
and leather
Guardsman
anti-stain protection

- spot stain and odour removal
- leather cleaning specialists
- flame retarding
- dust mite reduction service
- all work fully insured & guaranteed

For a free no obligation quotation call today
Freephone 0808 144 9071
John Joannides 28 Bracken Close Bookham

Safeclean
The furnishing care specialists from GUARDSMAN



*Pinehurst
Rest Home*

We aim to provide an excellent service at competitive rates supporting emotional physical and social needs of our clients always respecting and protecting their status as adults.

- Residential and 24-hour daycare
- Excellent cuisine
- Facilities for disabled: medic bath / lift
- Home doctor in attendance
- Single & sharing rooms
- Convalescent & short stays
- Lounge with TV & piano
- Separate dining room
- Physiotherapist chiropodist & hairdresser
- Entertainment: theatre visits / parties & cabarets held on premises

**National Trust Road Box Hill
Mickleham Dorking Surrey RH5 6BY**
Telephone: 01306 889942 / 888253

*Dorking
Decorators*
PROFESSIONAL
PAINTERS & DECORATORS

Established Local Family Business

- Over 20 years' experience
- Internal & External
- Commercial & Domestic
- Friendly, First Class Service
- Surrey / Sussex/ Greater London

**FREE ESTIMATES
01306 640418**
www.dorkingdecorators.co.uk
As approved by Checkatrade

CHRIS HULME
Garden Machinery

Service and repair of all makes and models of:

- Ride-on mowers
- Rotary mowers
- Cylinder mowers
- Chainsaws
- Strimmers
- Hedge cutters
- Rotavators
- Blower vacs

*Quality secondhand machinery
Collection and delivery service*

The Barn Cowslip Lane Mickleham 01372 377757 / 07950 961606

• Quality Flowers • Personal Service • Customer Satisfaction •

FLOWERS by ELAINE

- Wedding Specialists •
- Qualified Florists • Fresh Flowers & Plants • Local Delivery •
- Varied Gift Selection • Corporate Functions • Special Occasions •
- Funeral Tribute Specialists • Interflora Worldwide •

66 High Street, Dorking, Surrey RH4 1AY
T: 01306 883511 • E: fbe@btconnect.com
www.flowersbyelaine.co.uk



SIMON HOOPER
For all your decorating needs...

Professional friendly and speedy service at all times

Fully insured	Insurance work
Exterior painting	Interior decorating
Free quotes & advice	Oil & Water-based products
Commercial/Domestic work	Wallpaper hanging & removal
07947 135 376	0208 3978 962
www.slhdecoratingservices.com	

St Michael's Church Community Group Climate Sunday

Our first Climate Sunday seemed to go down well. Similar services were held in over 1800 churches nationwide as part of the Church of England Eco-Scheme developing momentum in advance of the COP26 Climate Conference in Glasgow in October/November. St Michael's is signed up to this scheme and a specific sub-committee of the PCC is to be set up to promote and monitor progress against the scheme objectives.

Harry Beer, aged 10, from Mickleham Hall has developed a bit of a reputation as a local 'activist': he sits on Old London

Road with climate reminders for passing motorists. He gave a great presentation on climate change reminding us that it is his generation which will bear the brunt of the actions of this one.

David Kennington identified the two main areas for environmental action: climate and the need to reverse decline in our habitats and species diversity. He emphasized the point that we seem to have been running the human race as separate from the rest of the world's environment, rather than part of it AND interdependent with it. He emphasized that organizations such as the Church,

like his previous employer, the National Trust, could provide the local leadership for individual actions to address both key issues. The CoE seems to have recognized its responsibility in this respect.

The Rev. Michael Dunk provided some powerful quotations from the church's pronouncements on the environment to emphasise the critical status of the need for action, rather than words. The entire reading of Genesis 1, 'In the Beginning...', seemed to take on extra meaning and relevance as the spoken word, reminding us of our place in this beautiful world.

Harvest Supper Last Chance Buy Your Tickets Now

Only a few days left to get your tickets for the 2021 Harvest Supper, missing for 2 years! I hope that you have kept the date of Saturday 2nd October free to come to the Village Hall for 7.30pm. A delicious main course, vegetarian alternative, even more delicious puddings, a bar, a quiz and a raffle. Tickets still available, £10 or £5 for children under 12, from Mary Banfield 01372 373912 and Frances Presley 013 06 882473 Looking forward to seeing you.

Frances Presley



Members of the Thursday morning Bible Study group enjoyed a BBQ in the garden on a lovely day in the middle of August. We have enjoyed studying less well-known prophets as well as topics such as the Seven Deadly Sins! We are looking forward to our next sessions which are so well led by Alison Wood.

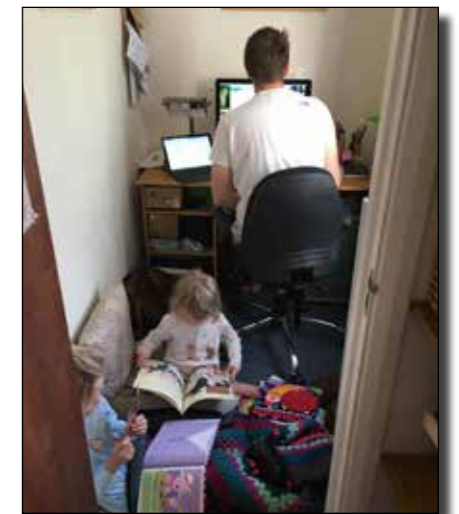
Lockdown Experiences for the Village Archive

Most readers would agree that we have been living through strange times since Covid-19 arrived in the UK at the end of January 2020. The local history group hopes to collect an archive of personal accounts by local people. As so much of what has been written has been via digital media which will eventually disappear into the ether, we aim to make hard copy records which can be accessed in years to come.

Were you working from home, a key worker, home schooling, shielding, a carer, volunteering at a food bank or other support group, an unofficial

community helper? Did you or someone in your household have the virus? Did you have a loved-one in a care home, or living on their own elsewhere? How did you keep your children occupied? How were your children affected? Please take a few minutes to jot down how you coped so that future generations will be able to read about life during the Covid-19 pandemic.

We would welcome accounts from everyone, either as hand-written hard copies in digital format. Please send to me at St Anthony, Pilgrims Way, Westhumble, Dorking RH5 6AW or to sue@thetatham.co.uk Sue Tatham



'A Lockdown Moment' was one of the subjects in the photography class at the recent Village Show. Many thanks to Amy Ward for letting us use her award-winning photo here.

Mickleham and Westhumble Horticultural Society Sun shines on September Show The Village Show

For once we were delighted with the weather forecast being wrong - overcast with occasional bright patches was the gloomy Met Office prediction, whereas we had a wall-to-wall sunny afternoon for the first Horticultural Show since Summer 2019. It was all quintessentially British as the tea and cakes had to be hurriedly moved into the shade and the visitors either basked in full sun or found some dappled shade. A bit like anything that is starting up after a pause, we were not quite sure what the response would be to a Show where people would actually mingle and talk face-to-face when the pandemic was still about, but we were pleasantly surprised to find that people were keen to get back to as normal a life as possible.

A very good number of entries were brought in from 8 am and judging began at 10.15 sharp. As a relative newcomer to the Show protocol I have been amazed at the amount of time the judges take in coming to a conclusion about winners and runners-up. Two people judge the fruit and vegetables and there is earnest conversation over every single entry except the longest runner bean - there's no two ways about that winner. Of course judging is partly objective and partly subjective: we all have our pet likes and dislikes after all, but it is all done with care and consideration. Naturally the cookery judge has the best job,

although one year we must counterbalance by having a marmite cake recipe from Letitia Cropley (Vicar of Dibley).

Prizegiving, because of Covid, was outdoors this year, but was actually a much better venue and we will continue this for the future. Many thanks to Charlotte Daruwalla who was our VIP for the day and presented the prizes. Prizewinners are mentioned below, but well done to Jennie Davis who took the main prizes of the Salomons Cup and RHS Bronze Banksian Medal. For the last two shows we have opened up entries beyond the two-mile-radius of Mickleham to members of the Garden Shed club (www.gardenshed) set up locally to promote gardening and to hold events, talks, visits and more. Jennie is our first winner from that source and we hope this will provide stimulus and interest in our show and a fresh competitiveness in producing excellent entries. Our aim is to keep this wonderful and traditional local event alive into the future.

David Kennington

Winners

- | | |
|--|---------------------|
| Ellman Cup, most outstanding exhibit—flowers | Jennie Davis |
| Robson Cup, most outstanding entry—vegetables | Jennie Davis |
| Schreiber Cup, most outstanding entry—fruit | Val Hallett |
| Gordon Clark Cup, most outstanding entry—floral arrangements | Alison Walton |
| Dennis Trophy, most outstanding entry—cookery | Sarah Blake |
| Vi Bullen Trophy, most outstanding entry—arts and crafts | Charlotte Daruwalla |
| Alan Huggett Memorial Cup, best dahlias | Richard Siberry |
| Taylor Cup, most points—cookery | Sophie Adshead |
| Colwell Cup, most points—arts and crafts | Charlotte Daruwalla |
| Bronze Banksian Medal, most points—horticulture | Jennie Davis |
| Salomons Cup, most points in show | Jennie Davis |
| Irvine Cup, most outstanding children's 3-4 yrs | Amalie Pinner |
| Heygate Cup, most outstanding children's 5-8 yrs | Cecilia Turner |
| Wilkinson Cup - most outstanding children's 9 and over | Freddie Armitage |
| Hudlass Cup - best entry St Michael's School, | Beth Conningham |



From the top: Alison Walton's flower arrangement 'High Drama'; the most amusing vegetable; collections of cherry tomatoes; below: an acrylic painting.



Clockwise from left: Charlotte Daruwalla presents a cup to Freddie Armitage; leisurely tea in the sunshine outside the hall; cookery classes; Jennie Davis collects one of her awards; art and craft works; prizewinning fruit; assorted vegetables; prizewinning dahlias; Jonathan Blake collates the results; Sue Tatham's vase of colourful foliage; Sarah Blake with the Dennis Trophy; and Ben Tatham's prizewinning photograph which had the caption 'Come into my parlour'.

Photographer Ben Tatham





- Bespoke dress making
- Soft furnishings
- Clothing alterations
- Curtains
- Sewing lessons
- Roman Blinds

Contact Tracey: 07511 079441
traceyssewingroom@gmail.com



**YOUR LOCAL PROFESSIONAL
TREE HEALTH CARE SPECIALISTS**

Felling, Pruning, Stump Removal, Planting, Logs,
Woodchip, Air Spade Services, Consultancy

Call us on **01306 741800**
office@treeline.co.uk • www.treeline.co.uk



Your visiting
PHYSIOTHERAPIST
SUE JUDD MCSP HCPC

40 years of experience.

All your requirements for elderly
mobilisation & post-operative
rehabilitation.

07834 227999 sue-judd@sky.com

EDE BROS

REMOVALS • STORAGE • SHIPPING

- Since 1926, Capel-based and family owned
- STRESS-FREE, local, national & worldwide
- Contact us for your **FREE** estimate...

01306 711293
edebros.co.uk



Gill and Paula would like to warmly welcome you to Aspen Care offering assistance to enable you to live in the comfort of your own home with care and companionship.

- A happy alternative to a care home
- Cover while your family or carer takes a holiday
- Recuperation and rehabilitation following a hospital stay
- All aspects of personal care medication and meal prep
- Dementia care disability chronic & critical conditions end of life care
- Accompaniment to appointments

Call for a chat to discuss your requirements.

We look forward to hearing from you.

01737 354821 info@aspensliveincare.co.uk www.aspensliveincare.co.uk

P J Oliver & Son

Window cleaning
House & Garden Maintenance
Roof Repairs, Guttering
Painting & Decorating
Ground works, fencing, hedge cutting,
and tree work
Also Pest control

Call Phil on 07722 158111
Email Oliviagarrett79@gmail.com



**YOUR LOCAL FARM SHOP
ON DENBIES WINE ESTATE**
farm shop deli plant centre

Open daily including Bank Holidays 9.30 am to 5.30 pm and Sundays 10 am to 5 pm Free parking

Local produce: Own grown flowers • Chalk Hills bread • Sussex tomatoes
• Mandiras kitchen-ready meals • Grays dairy ice cream

We deliver veg bags and more to the local area on Tuesdays and Fridays see
www.vgfarmshop.com or email vegbag@vgfarmshop.com for details

LOCAL • NATURAL • ETHICAL 01306 880720 www.vgfarmshop.com

Irresponsible Cyclists?



Here are some more thoughts further to the article in last month's edition.

There has been a huge increase in cyclists in our area. The main reason was the 2012 Olympics followed by the Ride 100. We have now, thankfully, got rid of the Ride 100, which resulted in thousands of road cyclists training here between May and July each year. I rode in three Ride 100s, and was amazed at the fact that the organisers sent out regular newsletters to participants but never included messages about road safety, looking out for pedestrians, not riding on the A24 where there is a cycle lane, and the like. So the message for organised events is, we need to engage with the organisers and get them to issue proper instructions to their participants.

We do still have irresponsible road bikers in the area, and the assault mentioned in the earlier article is a good example of that. By the time you read this, the inquest on the dreadful

accident whereby a pedestrian was killed on the road up to Norbury Park should have taken place, and we will know what actually happened.

Most road bikers are sensible. But every time you see dangerous biking or ancillary offences such as that assault, do please photograph it and send a report to Surrey Police. Road cyclists need to know that they do not own the road.

For mountain bikes I actually think the risk is less. Yes, there are some irresponsible mountain bikers around. I did the London to Brighton off-road a few weeks ago and was amazed when I slowed down for a pedestrian on a shared path and got shouted at by a speedster behind me. But generally their speed is restricted by the terrain.

The solution is not banning them, it is segregation. If you look at what has been done on Leith Hill, mountain bikes and pedestrians/horses are all kept on separate trails, except in rare cases

where the trails are clearly marked as shared.

Mickleham Parish Council has put in for a grant from Surrey County Council to put in place signage, fencing and chicanes across Mickleham Downs to try to match the success of Leith Hill. We should also be seeking to persuade Surrey County Council to do the same in Norbury Park, if they can ever work out what they want to do with Norbury Park. Including a café and cycling shop in the new development for the old sawmill, and encouraging well-run cycling events, would put some money from cyclists back into our community. Hopefully the same will be true of the new café 51° North, replacing the Frascati. Like it or not, we are now a major destination for road bikes and mountain bikes alike, and we have to work out how to live with them, not simply to ban them.

Will Dennis



Local Plan – Westhumble

Thanks to all the people who signed the petition against parts of Westhumble being inset from the Green Belt in the new draft Local Plan, the proposal has been dropped. The revised plan was

accepted at a Mole Valley Cabinet meeting on 15th September. The area adjacent to Cleveland Court that was under consideration for development also appears to have been ruled out.



Mickleham Choral Society
Concert for Remembrance Sunday

Sunday 14th November at 6 pm

CHANGE OF VENUE

Sadly it is not possible to hold Mickleham Choral Society's annual concert for Remembrance in St Michael's, Mickleham due to Covid restrictions. However, we are fortunate that St Mary's Church, Church Road, Leatherhead can accommodate us and we will be giving our concert there instead.

This is our first concert in nearly two years and as such will be a very special occasion.

We hope as many of you as possible will be able to join us.

Details for booking tickets will be in the November magazine

The Garden Shed Visit to Knepp

I am sure many of you have heard about the Knepp Estate, south of Horsham. The 3,500 acre estate is owned by Charlie Burrell who inherited it from his grandparents. For 17 years he struggled to keep the farm going but finally had to sell off all the farm machinery and livestock.

In 2002 he launched his vision for rewilding Knepp, and in 2010 the Knepp wildland project received Higher level Stewardship funding, the government scheme for funding environmental projects. The driving principle is to establish a functioning ecosystem where nature is given as much freedom as possible.

This summer the Garden Shed booked to go on one of their walking safaris. This gave us an insight into how this project is working and a chance to see first-hand the results of 11 years of rewilding the land. We were not disappointed. The group split into two, and we were led by an ecologist for three hours, being shown the different areas of estate.

Our first spotting of a stork sitting on its nest high in the tree, immediately led to our leader explaining how each year there is an increasing number of storks arriving on their land. As we walked, we saw a many more storks nesting. The biggest surprise was when they all took to the air and started circling the sky using the thermals. What a sight to see. Knepp have also introduced free-roaming cattle, ponies, pigs and deer. They have noticed that certain species are increasing in numbers. Turtle doves, on the list of endangered species,

for the British Isles are seen at Knepp and there are now 24 breeding pairs. We saw a hobby, the smallest variety of falcon, and nightingales which breed on the estate. The purple emperor, one of the largest British butterflies, is another species in general decline. However, they are at Knepp in good numbers because the rewilded habitat suits their needs. They, in turn, attract butterfly enthusiasts every year.

Here are a few photos that were taken on the afternoon. We were all so impressed with the information shared by two very knowledgeable ecologists. We all agreed that we would be back.

The public can visit the estate and walk on the marked footpaths. However, we found that the guided safari walk gave us much a much greater depth of understanding about this outstanding project.

From top right: part of the group on their walk; a stork on its nest; cinnabar caterpillars on ragwort; a stag with handsome antlers; the hammerpond; a speckled wood butterfly; a closer view of a stork on its nest.



Thinking globally, acting locally – Biodiversity on the Mickleham Rec

As noted on page 9 of the July/August issue of this magazine, the chance find in the spring of bee orchid rosettes on the Rec at Mickleham has stimulated the leaving of an area to grow naturally to flower and to seed. In just one afternoon in early July I recorded 50 plant species on the Rec and its surrounding hedges. Most of these are native species. There will be more to be found but this does give a snapshot of what is there.

Leaving this rectangle of grass uncut has allowed these native species to both flourish and to act as a food source for bees, butterflies and many other invertebrates. Some of these in turn will be eaten by other animals such as birds and bats. The seed of grasses and other

species will feed some birds directly too, their own muesli mix in effect. There are many more benefits to wildlife. Some of their leaves are eaten by caterpillars of butterflies and others and the taller grassland gives shelter to these too. All of this in about 10m square!

I do hope that others too will consider this trial of leaving this small area uncut in the summer to be a success and that it will be repeated in some form in subsequent years. As this is the children's play area, I wonder what the young people of the village think about this trial?

I have sent a list of the plant species I found to the MPC and am happy for it to be circulated more widely.

Ann Sankey



above: common yarrow
below: knapweed



Knepp: a Magical Place

Charlotte Daruwalla adds:

Knepp: you can read the full story of the wilding of the estate in the book *Wilding* by Isabella Tree, Charlie Burrell's wife. It is very informative and a good read.

I used to pass the estate on the bus on my way to school every day for several years – I remember seeing the sign about Knepp being the home of the herd of red poll cattle, the pride and joy of Charlie Burrell's grandmother. You may have seen the ruin of a former Knepp castle (12th century), visible from the A 24 south of Southwater. The Burrell family live in a 'modern' version' built in 1809, which a pair of storks has chosen as a suitable venue for a nest.

Little did I know when on the bus that more than half a century down the line I would get great pleasure from visiting Knepp; finding an area where the wildlife has been revitalised, against the trend in most other areas where intensive farming makes the habitat less suitable for native birds to thrive. At Knepp, the birdsong in spring is almost deafening while in other areas it is alarmingly quiet. Earlier this year, for the first time, I recorded a turtle dove's purring call there; it is quite hard to hear it on the recording because of the volume of other songbirds competing with it.

My first visit was on a trip organised by Lyn Richards of Friends of Box Hill

a while ago. We may have been part of a test run for the safaris because we were charged a fraction of the price. We travelled round the estate in an all-terrain vehicle and the tour was conducted by Charlie Burrell himself and a tree expert Ted Green, who was an advisor to the wilding project. They gave a fascinating commentary and insight into the estate as it travelled round, just like the ecologists on the Garden Shed trip. It was quite an experience and I have been back many times since then.

Excellent maps of the waymarked footpaths are available on the web or from the shop at the safari site on the estate.



See our website for details
www.gardenshed.club

Garden Shed - Coming Events Thursday 28th October Leonardslee Lakes and Gardens

Guided tour to see the autumn colours
10 am - 3 pm Cost £18 - Booking essential
Lunch in the Courtyard Café - cost not included
Self-Drive - car share where possible

Any questions and to book
Pauline Davis 07759 646353 paulinemdavis@gmail.com
Susie Gowenlock 07768 923088 susiegowenlock@gmail.com

A Confidential & Safe Space to Talk

Counselling • Mind & Body Healing
Reiki • Relax into Nature Sessions
Online/Outdoors/Distance

Supporting you with compassion and understanding through challenging times



Call Judith Cobby
on 01306 882229
or 07790 614448

www.healing-inspiration.co.uk



A local, award-winning business supporting people living in Epsom & Mole Valley, enabling them to remain living independently AT HOME as well as providing companionship and colour to peoples lives.

RATED AS OUTSTANDING BY CARE QUALITY COMMISSION

Committed to providing a quality, trusted and consistent home care service, we only recruit local CareGivers and match every CareGiver to every client so the same person will call each time.

01372 741544 paul.tame@homeinstead.co.uk
www.homeinstead.co.uk/epsom

Ballroom Dancing Latin American Dancing Professional Training [IDTA]

Private lessons only on
Tuesday afternoons and
Sunday evenings

[with a one-hour practice session starting at 8pm]

At Mickleham Village Hall
Dell Close Mickleham Surrey RH5 6EE
07748 867 732
vmvdancing@gmail.com



IDTA Qualified Teacher

TIM LANGLEY

Experienced craftsman

ANTIQUE RESTORATION
CABINET MAKING
FRENCH POLISHING

Free estimates collection & delivery
01372 457700 07960 486455

Rowlatt Garden Services

RGS

EST. 1985

**Gardens large and small
we maintain them all**

All aspects of private and commercial garden and estate maintenance landscaping undertaken
Fencing grass & hedge cutting

Telephone: 01737 841524 Mobile: 07887 838666
References available upon request

A25 ELECTRICALS

Domestic & Commercial

- Electrical Installations
- Alterations
- Expertise in Fault Finding
- Condition Reports

07760 852 540

Part P Approved



Personal Training and Pilates with Immie Adshead

L4 Qualified Coach

Optimize your Body Brain Connection
Maximise your Results

1-1, 1-2, small groups in the Surrey Hills
07935 674 588

immieadsheadpt@gmail.com
www.thebodybraincoach.com



SHOP LOCAL WITH SEACHANGE



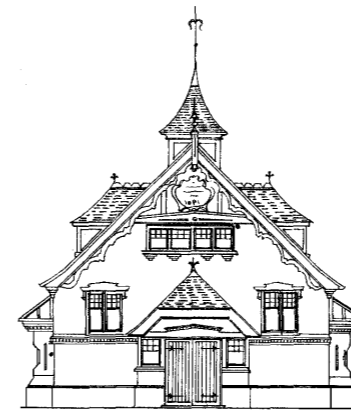
We are passionate about two things: protecting our oceans from plastic pollution and great tasting wine.

- Award-winning wines from around the world
- Vegan and vegetarian options
- Supporting ocean conservation projects
- Minimal, eco-friendly packaging
- Plastic free

THE SURREY-BASED ECO-CONSCIOUS WINE RANGE

CONTACT US ABOUT FREE LOCAL DELIVERY

+44 (0) 1372 454910 - HELLO@SEACHANGEWINE.COM - WWW.SEACHANGEWINE.COM



Mickleham Village Hall available for hire

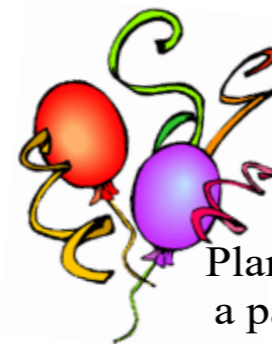
Hall bookings
Table & chair hire

Deanna Darnell

07790 941 601

bookings@micklehamvh.co.uk

www.micklehamvillagehall.org.uk



Planning
a party?

Equipment
available for hire

China ~ Cutlery

Electric urn

Equipment hire

Mary Banfield

01372 373912

admin@micklehamvh.co.uk

Community Directory

BOX HILL AND HEADLEY HEATH (National Trust)

Lead Ranger – Mark Dawson

01306 885502

mark.dawson@nationaltrust.org.uk

Friends of Box Hill – Chair Lyn Richards

01737 842889

lyn@mra.uk.net

BOX HILL SCHOOL

Headmaster – Cory Lowde

01372 374814

HMPA@boxhillschool.com

DORKING CRICKET CLUB

Chairman – Andrew Homewood

homewooda@hotmail.co.uk

DORKING GROUP OF ARTISTS

Exhibition Secretary – Patricia Booth

01737 24491

patriciabooth100@gmail.com

DORKING LAWN TENNIS & SQUASH CLUB

Jim Cattermole

01306 883629

jim.cattermole@uwclub.net

DORKING RUGBY CLUB

Jim Evans

07789 176417

jim@flintcottage.net

THE GARDEN SHED

Pauline Davis

07759 646353

paulinemdavis@gmail.com

Susie Gowenlock

07768 923088

susiegowenlock@gmail.com

JUNIPER HALL FIELD CENTRE

01306 734501

enquiries.jh@field-studies-council.org

Head of Centre – Maddy Jones

m.jones@field-studies-council.org

Friends of Juniper Hall – Suzy Hughes

01483 281935

suzy@suzyhughes.co.uk

MICKLEHAM CHILDREN'S PLAYGROUND ASSOCIATION

Secretary – Sarah Parfitt

07767 891772

sarah@sarahparfitt.com

MICKLEHAM CHORAL SOCIETY

THURSDAYS 8 - 10 pm – MICKLEHAM VILLAGE HALL

01372 373106

Conductor – Juliet Hornby

Secretary – Anne Weaver

01306 883932

www.micklehamchoral.org.uk

secretary@micklehamchoral.org.uk

MICKLEHAM OLD BOX HILLIANS FOOTBALL CLUB

Secretary – John Atewell

01372 374745

MICKLEHAM PARISH COUNCIL

SEE WEBSITE FOR MEETING DATES www.micklehampc.org.uk

Chairman – Revd David Ireland

01372 379381

rev.ireland43@btinternet.com

Parish Clerk – Feena Graham

clerkatmpc@gmail.com

MICKLEHAM PARISH MAGAZINE

Editor – Sue Tatham

01306 882547

editor@micklehammag.co.uk

Co-Editor – Charlotte Daruwalla

01306 884025

editor@micklehammag.co.uk

Administrator – Vacant

MICKLEHAM VILLAGE HALL

Chairman – Ben Tatham

01306 882547

chairman@micklehamvh.co.uk

Bookings Manager – Deanna Darnell

07790 941601

bookings@micklehamvh.co.uk

ST MICHAEL'S CHURCH

*within the United Benefice
of Leatherhead and Mickleham*

INCUMBENT

The Reverend Graham Osborne 01372 372313

PARISH PRIEST – Vacant

CHURCHWARDENS

Sarah Blake 07736 235709
SarahJBI@outlook.com

Timothy Mathieson 07555 597163
TimothyMathieson@aol.com

PARISH ADMINISTRATOR

Alison Wood 01372 376443
admin@micklehamchurch.org.uk

PCC SECRETARY

Elizabeth Moughton 01306 883040
pccsecretary@micklehamchurch.org.uk

TREASURER

Richard Siberry 01372 375303
pcctreasurer@micklehamchurch.org.uk

ORGANIST

David Fishwick 0208 773 2420
organist@micklehamchurch.org.uk

WEDDINGS CO-ORDINATOR

Elaine Machin 01372 724972
weddings@micklehamchurch.org.uk

BAPTISMS CO-ORDINATOR

Vickie Leney 01306 884054
baptisms@micklehamchurch.org.uk

FUNERALS ORGANISER

Brian Wilcox 01372 374730
dbrianwilcox@btinternet.com

WEBSITE MANAGER

Sarah Ward 01372 383350
website@micklehamchurch.org.uk

www.micklehamchurch.org.uk

*For information about services for other
denominations see website pages.
Search on 'Churches Together Mole Valley'*

REGISTERS

WEDDING

4th September
Charlotte Hawkins and Peter Grey

MEMORIAL SERVICE

18th September Joe Lyons



October

2 Saturday 10 am Coffee Morning at Westhumble Chapel
2.30 pm Memorial Service for Sayda Cole
7.30 pm Harvest Supper – Village Hall

3 SUNDAY 10 am Family Service
5 Tuesday 7.30 pm Parish Prayer Meeting in church

10 SUNDAY 10 am Holy Communion
11.30 am Morning Prayer at Westhumble Chapel

Copy deadline for November Parish Magazine

13 Wednesday 7.30 pm Licensing of Sandra Faccini as Parish Priest
in St Michael's Church

16 Saturday 9 am Men's Breakfast. The Running Horses

17 SUNDAY 10 am Holy Communion

23 Saturday 9 am Women's Breakfast. Stepping Stones

24 SUNDAY 10 am Holy Communion

31 SUNDAY 10 am Holy Communion

Coming Events

14th November – MCS Remembrance Concert in Leatherhead Church
10th December – MCS Carol Party



MEMBERS OF THE PAROCHIAL CHURCH COUNCIL

Sarah Blake Mark Day Andrew Diamond
Caroline Jones Vicky Leney Elaine Machin
Timothy Mathieson Elizabeth Moughton
Frances Presley Richard Siberry
Amanda Wadsworth Amy Ward

ST MICHAEL'S COMMUNITY GROUP COMMITTEE

Mark Day 07852 117249
mickleham@hotmail.com
Amy Ward 07709 199292
amycatrionaward@gmail.com
Mary Banfield 01372 373912
mgbbmw@aol.com
Andy Diamond 07789 775354
diamo1@hotmail.co.uk
Will Dennis 07903 842674
wdwdennis@icloud.com
Frances Presley 01306 882473
jasempres@gmail.com

ST MICHAEL'S COMMUNITY GROUP HELPING HANDS INCLUDING FOOD FOR FRIENDS *A service for all residents of Mickleham and Westhumble*

Examples of services we offer*:

- Essential shopping / collection of prescriptions
- Changing library books
- Small tasks: eg changing fuses, altering clocks etc
- Dog walking
- Visiting / befriending
- Home-cooked meals for local families going through difficult times

Requests to

Frances Presley 01306 882473

*More helpers needed – please contact
Frances if you can spare some time.*

Community Directory

Continued from page 13

- MICKLEHAM & WESTHUMBLE BADMINTON CLUB
Membership Secretary Sarah Blake tinkerbell0044@hotmail.com
- MICKLEHAM & WESTHUMBLE CRICKET CLUB
Membership contact Will Dennis 07903 842674
will@micklehamhallfarm.co.uk
- MICKLEHAM & WESTHUMBLE HORTICULTURAL SOCIETY
Chairman – David Kennington 01372 362309
www.surreycommunity.info/mwhs davidkennington144@gmail.com
- MICKLEHAM AND WESTHUMBLE LOCAL HISTORY GROUP
Chairman – Ben Tatham 01306 882547
ben@thetathams.co.uk
www.hugofox.com/community/mickleham-westhumble-local-history-group-13483/
- MOLE VALLEY DISTRICT COUNCIL 01306 885001
Councillor Elsie Rosam 01306 885695
elsierosam29@gmail.com
- THE ARTS SOCIETIES (FORMERLY NADFAS)
Betchworth – Mary Venning 01306 883301
Dorking – Sue Tatham 01306 882547
Leatherhead – Sarah Sheridan 01306 883699
- ST MICHAEL'S CHURCH OF ENGLAND (A) INFANT SCHOOL 01372 373717
info@stmichaels-dorking.surrey.sch.uk
Friends of St Michael's School friendsofstmichaels2017@gmail.com
Co-chairs Nicole Harcombe, Tracey Harwood, Amy Rieley
- ST MICHAEL'S COMMUNITY NURSERY
WEEKDAY MORNINGS – MICKLEHAM VILLAGE HALL
Supervisor – Hilary Budd 01372 361021
stmichaelsnursery@btinternet.com
- SURREY COUNTY COUNCIL 03456 009 009
Councillor – Hazel Watson 01306 880120
hva.watson@btinternet.com
- SURREY WILDLIFE TRUST 01483 795440
info@surreywt.org.uk
- WESTHUMBLE RESIDENTS ASSOCIATION
David Allbeury 07860 227451
westhumble.neighbourhood.watch@gmail.com
- WESTHUMBLE NEIGHBOURHOOD WATCH
Lead Co-ordinator – David Allbeury 07860 227451
westhumble.neighbourhood.watch@gmail.com
- ADDITIONAL CONTACT INFORMATION
- CITIZENS ADVICE
Dorking – Lyons Court 01306 732302
Leatherhead – Swan Mews High Street 01306 732301
- CRIMESTOPPERS 0800 555 111
- POLICE Non-emergencies 101
(often quicker to make online report) <https://report.police.uk/>
Neighbourhood Specialist Team – Dorking Rural East
General enquiries molevalley@surrey.pnn.police.uk
- NHS Urgent and emergency care 111

Babysitting by local youngsters

Those listed below are at least
14 years old.

- Alasdair Wise 01306 884694
Annabelle Prosser*
07443 634179
- Maisy Presley* 07720 657327
Freya Pearce 07787 427143
Martha Pearce 07514 080005
Skye Moran 01306 640043
Patrick Moran 01306 640043
Amber Miller 01306 883659
Rory Lee **07973 360 950
Ellie Kim 07773 395 575
Tatiana Fleming-Smith
** 07495 014 427
- Chelsea Edwards 07834 695816
Philomena Ala 07789 727682
Delphine Ala 01306 885767

* Holidays only
** Parent's mobile number

If you would like to add your
name to this list please get in
touch with Sue Tatham

01306 882547
editor@micklehammag.co.uk
No Charge

Advertising in the Parish Magazine

Please contact
Sue Tatham (as above)
Small ads: a nominal fee is
charged for ads where items or
services are bought or sold.

We have been advised to print
the following reminder:
*We cannot guarantee the
quality of the goods and
services offered by our
advertisers.*



Sayda Cole 1941 – 2021

Many were saddened to learn that Sayda Cole had died quietly at home on 2nd February. Her passing brought to an end twelve long years of a cruel progressively degenerative disease which she bore with great courage. Thanks to the care of her devoted husband, Brian, and loving friends Sayda was able to participate in local activities until a short time before the pandemic stopped everything.

We are all to a large degree products of our upbringing and Sayda's was certainly a most unusual one. Born in 1941 in Bombay during the Second World War, she remained there until 1947 when her parents decided to opt for Pakistan at the time of Partition amidst the horrific events which occurred during a breakdown of social order. They lived initially in Karachi but then moved after a short time to Lahore with her four sisters and an impressive household staff. Eventually in 1960 the family set sail for England and to a very much more modest lifestyle in Ladywell. Sayda worked as a secretary for a large West End firm of estate agents until 1965, having first met Brian in 1963. They were married two years later. Her marriage prompted more time spent overseas while Brian continued his career with BP in locations as



Sayda distributing MPMs 1992

diverse as Nigeria, Benin, Tunisia and Paris. During their time abroad Heather and Andrew were born and by the time the family returned to England in 1974 Heather was five and Andrew was two.

The family settled for a short time in Beckenham before moving to Westhumble in the summer of 1975, where Sayda lived with Brian for the rest of her life and very happily brought up Heather and Andrew. They recall very fond memories of their mother, reflecting on her firm faith and Christian commitment and her devotion to St Michael's Church and its various outreach activities. They particularly remember her devotion to them both and to their well-being; all the events which they enjoyed with her such as school sports days, long walks in Norbury Park and picnics.

Latterly Sayda loved her role as granny to Conner, taking him on trips to places such as Worthing and Arundel Castle. Her love of them all is summed up by the fact that just two days before she died, she spoke to both Heather and Andrew bidding them what turned out to be a very fond farewell.

Sayda loved life in the village and contributed to it in so many ways, from helping in the village shop, and assisting at many children's functions organised by the church. She was also a devoted member of the Thursday morning bible study group for many years until her disability prevented her from taking any further part.

In 1984, when I became editor of the reconstructed Mickleham Parish Magazine, Sayda was part of the original team. She typed the pages with such skill there was rarely a typo, but when one was spotted, rather than resort to Tippex, she speedily retyped the page. But when we moved the production to computers, she chose to take over the distribution of magazines instead. She was such a help to me.

Nothing was too much trouble for her, even for people she hardly knew, and her kindness, concern and devotion will be remembered for many years to come. For Brian, Heather and Andrew the passing of Sayda has left a great void in their lives and enormous



sadness. Sayda had so much love to offer, and they will always recall her energy, cheerfulness and devotion to her family. We send them our sincere condolences.

Sue Tatham



A Memorial Service to celebrate Sayda's life is being held at St Michael's Church on Saturday, 2nd October at 2.30 pm.



Geoff Knight

We are sorry to report that Geoff Knight, formerly of School Lane, died on Friday 10th September at Dungate Manor Care Home in Reigate where he had been staying since June this year. He celebrated his 89th birthday last January and had been in failing health for some time, but his sudden death was unexpected. We send our love and sympathy to Gene, Amanda and family at this sad time.

Community News

Congratulations to Julia, daughter of Angela and Clive Gilchrist of Chapel Lane, on her wedding to Louis Lloyd in Kotor Bay, Montenegro. They finally managed to tie the knot on the 21st August, following two Covid-incurred cancellations. A perfect day, and so worth the wait!



The Annual Bonfire and Fireworks display

The Westhumble Residents' Association has discussed the Annual Bonfire and Fireworks display in the Westhumble Fields. In relation to the Fireworks display the following points were made:

- The fireworks need to be ordered now which means a commitment of £2,000 which would not be recovered if the event was cancelled, and could not be stored for use in 2022;
- While outdoor events were currently permitted a new Covid variant or a surge in cases might lead to a change of government guidance;
- The Brockham bonfire and fireworks had been cancelled for 2021;

The Committee agreed that in light of this the fireworks display should be cancelled.

It was noted that the bonfire did not require the same advance financial commitment. However, the following points were made:

- With Brockham's event cancelled a Westhumble event, even bonfire only, might be inundated by visitors;
- Not all the usual bonfire builders were comfortable with the required closeness for some aspects of the bonfire building.

In the circumstances it was decided to cancel the event for 2021.

The Pixham Artists & Friends



Denbies Vineyard Gallery
London Road
Dorking
RH5 6AA



4 ~ 10 October 2021

9:30 ~ 5:30 Monday ~ Saturday, 10:00 ~ 4:00 Sunday

Bridget Glasgow, Suzie Moore, Phyllis O'Shea, Jennie Sherborne, Caroline Watson & Elizabeth Watson

Macmillan Coffee Morning

Thank you to everyone who came along and supported our coffee morning at Chapel Farm on 10th September.

It was a great turn out despite the rather inclement weather. Initial tally up is over £1,400 which is an incredible support for this great charity. Donations were also received from people who were unable to be present. There were delicious cakes which were enjoyed by everyone and it was so good to catch up after a year without the coffee morning.

Thank you. Liz Absalom

BRAIN TEASER

Can you translate this diagram into words?
Say what you see.

Trans
it

Answer on page 26

Marathon time

There are at least five Mickleham and Westhumble residents taking part in the upcoming London and York Marathons and thereby raising funds for charity. Running in the the London Marathon on Sunday 3rd October are:

Suzie Wood who is running for Guide Dogs.
Her justgiving page is: <https://uk.virginmoneygiving.com/SuzieWood>

Holly Pearce is running for Breast Cancer Now and her page is: <https://www.justgiving.com/fundraising/Holly-Pearce97>

Gary Lloyd is running for St John Ambulance, with the link: <https://www.justgiving.com/fundraising/Gary-Lloyd44>

Also running on the same day in the Virtual London event will be **Immie Adshead**, getting to know the A24 between Dorking and Leatherhead a bit too well! This event is for those who were not allocated a place in the Marathon.

Good luck to all five. Training is almost done; now it's time for the big day...
Race reports next month.



Immie Adshead running in a sprint triathlon at Blenheim Palace recently



The team at Dorking Museum looks forward to welcoming visitors in October. We note that Friday 1st October is officially 'National Smile Day', the message of which is "Do an act of kindness. Help one person smile". We hope that another month of free museum entry will make you smile!

'Dorking 1620': The Museum's current special exhibition, postponed from 2020, marks the 400th anniversary of the sailing of The Mayflower. Dorking shoemaker William Mullins, whose house survives in West Street, was one of six Dorking residents who sailed on the Mayflower, and his daughter, Priscilla, is sometimes known in the USA as 'the mother of a nation'. At that time, Dorking – known as 'Darking' – was a relatively modest market town for the surrounding villages and farms, holding regular markets and well provided with shops, mills and inns. The impressive new exhibition, 'Darking 1620', weaves the story of the six

Dorking Museum in October

pilgrims from Dorking who undertook that perilous voyage to the New World with an examination of 17th century life in the town they left behind.

A short film 'Mayflower 400' is also on view and the accompanying book, 'The Weaver, the Shoemaker and the Mother of a Nation' by Kathy Atherton and Susannah Horne, is on sale, £8.

New book: 150 years ago, alongside the market for which it is well-known, Dorking had quite an industrial centre. At the heart of it was a brass and iron foundry. The Dorking Foundry site is now occupied by Dorking Museum and a new book by Julian Womersley takes a fascinating look at its history. 'A Dorking Foundry Scrapbook: Celebrating a lost part of the town's industrial heritage' is published by The Cockerel Press and available from the Museum and online shop, £5.50.

Archive Sale: There will be an Archive Sale of duplicate items surplus to Museum requirements, including maps, books, postcards and other items. Please come along to the Christian Centre, Church Street, on Saturday 23rd October, 11am-2pm, to buy yourself a piece of Dorking history and support your local Museum.

Walking in Dorking: Check out the programme of guided walks on dorkingmuseum.org.uk/guided-walks



around-dorking/. The Museum is at 62 West Street, Dorking RH4 1BS. Thursday, Friday, Saturday 10am-4pm. Visit www.dorkingmuseum.org.uk. Enquiries to admin@dorkingmuseum.org.uk or phone 01306 876591.



Regular Lawn Mowing
Lawn Care & turfing
Pressure Washing
Hedge Trimming
General Garden Maintenance

phil@philsmowingdorking.co.uk
07905 160765



HANNAH SCHELLANDER
HYPNOTHERAPY

Struggling with anxiety?

Online sessions available

07846 508117

WWW.HANNAHSCHELLANDER.COM

We provide the best possible care for your feet

Book your appointment:
01372 454583



Bookham
Chiropody & Podiatry Clinic
Diagnosis, Expert Treatment & Professional Care for Your Feet

29 High Street, Great Bookham KT23 4AA
www.bookhamchiropody-podiatry.co.uk

Painting

Decorating / tiling
Wallpapering

- Fully insured
- Free estimates
- References available

Tel: Martin 07770 441201



Vivien Cresswell

Made-to-measure Soft Furnishings

Curtains Roman Blinds Cushions



Extensive range of fabrics

01737 843858

info@cresswellscurtains.co.uk

www.viviencresswell.co.uk

Mike Palmer

Electrical Services

Part P registered electrician



From additional lighting and sockets to complete rewires

Fully insured Registered with the NICEIC

07866 930483 mike@mikepalmer.biz

Boxhill Way, Strood Green, Betchworth RH3 7HY



KING WILLIAM IV

Hello friends and neighbours

Things have been going great guns here at the King William IV. We have once again been awarded our five-5 hygiene rating - a fantastic achievement to consistently get five stars year after year. I give full credit for this to Kat who oversees all the kitchen activity. The standard and quality of the food and service has once again earned us a Tripadvisor certificate of excellence - the tenth year in succession we have achieved this accolade. I am very proud of my team and their efforts to look after our customers. I am often asked how is it that our staff are always so nice and polite - there is no secret to this, we only employ nice people - it comes naturally to them. We hope to roll out our new menu at the start of October. Drop us a line if there is a dish you would like to see on it.

See you soon, Eamonn

Byttom Hill Mickleham 01372 372590 www.thekingwilliamiv.com



The Mickleham Cricket Club finished the season with a thrilling game against Leatherhead. 450 runs were scored and the game went right down to the wire. Justin Turner's impressive form with the bat continued with 48 and Michel Ngueudam's bowling terrorised the opposition finishing with 2 wickets for 48 off 8 overs. MCC narrowly lost the game.

This has been a challenging season with Covid and the loss of many of our young players. Greg Ayton, our captain, tragically lost his amazing dad midway through the season. This gave me a chance to captain the side. I love this club. They play competitively, we want to win, but as captain I realised what really makes MCC special. We are inclusive, we respect our opposition and we always play with the Caribbean spirit. The best game for MCC is when everybody has had a chance

to participate and felt like part of the team.

So the highs of the season. Justin Turner's amazing batting. In his opening game he was 119 not out. Theo Dudley's emergence as an outstanding bowler under the tutelage of Greg Ayton. Michel's rise as a fearsome opening bowler. Farah Patel diving around the field to save us runs, Ali Pritchett, 14 years old, taking 4 wickets in a game and Ivan Lyons joining us and being embraced to find some solace after losing his son tragically.

A few big thanks to Chris Presley for organising all our games as well as a magnificent 6-a-side tournament in the New Forest. To Frances Presley who stoically manages our scoring in every game and to Mark Day, who we have come to realise is a truly great umpire.

We are looking forward to the next season and we need your support. You can be proud of the MCC - we deliver the best cricket teas in the South.

If you would like to find out more about the MCC and would like to join us please visit our website www.Micklehamcricketclub.co.uk or email Will Dennis wdwdennis@icloud.com



2022 Wild Surrey Artist and Photographer

Surrey Wildlife Trust is delighted to announce the launch of its Wild Surrey artist and photographer of the year 2022 competition. Supported by STIHL, the competition is open to anyone seven and upwards and aims to showcase the most inspiring nature themed art and photography in Surrey. The closing date for entries is 1st March 2022. Shortlisted entries and the winners will be exhibited online and at the Lightbox in Woking from 9th to 22nd May 2022. To find out more about each category and to enter visit www.surreywildlifetrust.org.uk, Facebook or Instagram @SurreyWildlifeTrust Instagram and Twitter @SurreyWT



The Dorking Group of Artists
November Exhibition 2021

Denbies Wine Estate

Monday 1st November - Saturday 6th November

10 am - 5 pm (4 pm on last day)

The Dorking Group of Artists, one of the largest art groups in Surrey, is delighted to welcome you to an actual, real life exhibition at Denbies Wine Estate in November, in both the Gallery and the Denbies Suite. Work will be sold 'off the wall', buy work and take it straight away. Our brand new exhibition screens have been made and finished and we are looking forward to showcasing our members work using them. Exhibiting members, many professionals among them, will be displaying over 200 pieces of exciting new and original art, all for sale at affordable prices. The paintings should appeal to every taste, featuring different subjects and styles and covering a wide variety of prices and media. There will be large selection of unframed paintings for sale too. Entrance to the exhibition is free.

Jane Anderson Wood (Chairman) 01372 375123. dgacommittee@gmail.com

www.dga.org.uk



Brittany Thoroughfare by John Yardley

The North Weald Art Group
Annual Exhibition

16th - 28th November

10 am - 4 pm

Denbies Art Gallery

northwealdartgroup.org.uk

Facebook. North Weald Art Group

We are looking for new members to join the parish magazine team. If you live locally and are interested in people and their activities please get in touch with Sue Tatham.

01306 882547 Editor@micklehammag.co.uk

Do you need a plasterer?

Over 25 years' experience working on extensions, renovations, new-build and conversion projects for builders and domestic customers alike.



Our work is to a high standard and we are fast. Give Chris a call for a free, no obligation quotation.

**CHRIS C GUY
PLASTERING LTD**

ALL ASPECTS OF INTERNAL & EXTERNAL PLASTERING
07740 860560 chrisguyplastering@gmail.com

07871 051661 / 01372 458616
timskerrittgroundworks.co.uk

TimSkerritt
LANDSCAPE & GROUNDWORKS

Turn your vision into a reality

Tim Skerritt Landscape & Groundworks offers a comprehensive range of services to both commercial and domestic clients across Surrey.

From hard landscaping to extensive site excavations, we offer a high quality, honest, reliable and competitively priced service, guaranteed to meet all your needs. Contact us today to find out more.

Julie Watts Family Law

AN AFFORDABLE AND EXPERIENCED PROFESSIONAL ALTERNATIVE TO TRADITIONAL SOLICITORS

- Divorce • Arrangements for children • Finances
- Court Proceedings

PROUD TO PROVIDE A DIFFERENT KIND OF SERVICE

- Affordable fees • Straight-talking advice
- Practical real support

Contact me for a consultation

07808 572157 juliewattsfamilylaw.co.uk

Mole Valley Mowers

Open
Monday to Friday
8 a.m. - 5 p.m.
& Saturday
8 a.m. - 1 p.m.

All leading makes of lawn mowers

& garden tractors catered for

Reasonable rates

Free estimates & friendly service

Paul White Bookham 01372 458008

Domestic Appliance Repairs

30 years' experience repairing and installing all gas and electric domestic appliances



- Cookers Microwaves
- Dishwashers
- Washing machines
- Fridges / Freezers
- Water coolers
- Coffee machines
- Tumble dryers

Contact: Andy 07895 719706
andy@kirksdomestics.co.uk



GARDENS HOMES

ANDREW CLARK 07800 796 737

ALL GARDEN MAINTENANCE • PAINTING & DECORATING • HANDYMAN

Dorking Pest Control Services

Local Authority Approved Contractors



Our Services include: Wasps Bee Swarms Hornets Rats Mice

Squirrels Fleas Flies Ants Cockroaches Bed Bugs

Rabbits Moles Foxes and Deer



• Domestic Commercial and Industrial • Contract Work • Preventative Control Programmes

Experts in pest control throughout Surrey

Office: 01306 743001 Ivor: 07710 117491 Chris: 07971 519415

www.dorkingpestcontrol.com



Cryptic Delicacies

When I was looking for a theme for last month's puzzle I settled on CHEESE and then thought why not make it local? I well remember once manning a stall selling NORBURY BLUE at a farmer's market (and I am pretty sure I sold more than I ate). That must have been not long after it first appeared in 2001 Michaela and Neil Allam have since moved production from Norbury Park to near the Silent Pool in Albury and added two other cheeses to their stable: DIRTY VICAR (a white moulded soft cheese that is the North Downs' answer to STINKING BISHOP, the one cheese included in the puzzle that is not local) and the DORKING COCK (surely the only cheddar to be named after a roundabout sculpture). Given all the farms there are in Surrey, it's amazing that they are currently the only cheesemakers in the county. It is testament to Michaela and Neil's skill, persistence and enthusiasm and the quality of their products that they are still in the business despite all the difficulties of the last 20 years.

Probably the most convenient way of purchasing their wares locally is via Denbies farm shop but, as I know from selling my books, producers get vastly more when selling direct to the customer and so, if you have the chance, head over to their own shop at Sherbourne Farm, Shere Road, Albury, GU5 9BW. Not only can you buy their cheeses (particularly the Dorking Cock which is not on sale elsewhere) but you can also book a tour and see how they go about their work. And if you want to make a proper outing of it there are also the Silent Pool gin distillery and Albury Organic Vineyard next door as well as the opportunity for a walk around the magical Silent Pool itself. For more details see www.norburyblue.co.uk or ring 07799-231402 or 01306-710001.

Here are some of the clues dissected, with definitions underlined:

12 Sitting on the fence (Andrew likes not to!) (9)

IMPARTIAL

With 'Andrew' being me, the crossword setter, 'Andrew likes' can be expressed as 'I'M PARTIAL to', 'not to' means that you remove the 'to' (and this shenanigan has to happen because 'I'm

partial' without the 'to' is not the same as 'I like') then ignore the apostrophe and squish it together to get the answer.

3 Advocate for Mark 6 Golf? (5)

VICAR

I hoped that '6' would give you a good lead into this as its Roman representation is VI which fits in with the V in the crossing clue at the top. The question mark at the end is doing a bit of work here in that it is implying that 'Golf' is an example of a kind of thing, in this case CAR – and it is also saying that the definition is a bit tricky ('Mark' being a shortened way of referring to the Gospel according to Mark, with a VICAR being an advocate of that text's teaching).

27 Man can be found in outlet which caters for either his boyfriend or girlfriend? (6)

BISHOP

I will do my best to avoid getting caught up in gender or religious politics here, but I thought it worth mentioning that cryptic crosswords often use the word 'man' as a synonym for 'piece' in board games, particularly chess. So 'man' could be pawn, rook, knight, king or even queen (the best moving and most powerful man on the board – I am not going to make any effort to unpick that) or, as in this case, BI-SHOP.

21 With one of 18 in bow, facing the stern is what causes sickness (7)

CHOLERA

'one of 18' = HOLE (as in a round of golf), which is put 'in' 'bow' = ARC which when 'facing the stern' is CRA.

22 A Labour leader smashed up rock before giving boot to one of the Trinity (6)

SANDAL

'smashed up rock' = SAND which goes before A 'Labour leader' = L. The one of the Trinity I am referring to is the Son of God, and 'Jesus boot' is slang for SANDAL.

Always good to get ideas of things to discuss in my article, so any responses or queries will be happily received at andrewt@andrewtatham.co.uk

Andrew



Michaela and Neil

Box Hill



National Trust is selling second-hand books in the Box Hill café and would be happy to receive donations of books to ensure there is an ongoing supply. Other NT sites make significant amounts of money from the sale of donated books. If you have reasonable quality books to donate, please bring them along to the café between the hours of 10 am and 4 pm.

The Arts Society Leatherhead

Wednesday 13th October 7.30 pm
Tobias Capwell, 'Mars and the Muses: The Renaissance Art of Armour'

We welcome guests; for information, please contact Huw Jenkins by email at theartsocietyleatherhead@gmail.com
This may be on Zoom. Please check on www.theartsocietyleatherhead@gmail.com nearer the time.

10 Year
Manufactures
warranty available
with any new boiler
Oil, LPG and Gas Registered

**SE Plumbing
& Heating**

Call for a free quote on
01306 735499
www.seplumbingandheating.co.uk

Checkatrade.com
Where reputation matters

TONY WINCH
CARPENTER, JOINER
& CABINET MAKER
www.tonywinch.com
01306 742373
07969 016 924

Get IT Fixed, Get IT Connected
Expert Repair & Maintenance



Brockham based. No call out charges. Fully transparent quotations with no hidden costs. We make technology work for you.

Call us now on **01737 845980** ChalkHill Systems
www.chalkhillsystems.co.uk

Building Plans
For home improvements & extensions
Including planning & building regulations
Fast efficient service at competitive rates

MICHAEL LLOYD CEng MICE
For free consultation:
Phone: 01483 205479 or 07958 791 402

R A BUTLER
INTERIOR AND EXTERIOR
PAINTING & DECORATING
OVER 30 YEARS' EXPERIENCE

**BUILDING
REPAIRS
UNDERTAKEN**
PATIOS DECKING ETC NO JOB TOO SMALL

LOCAL REFERENCES IF NEEDED
01372 372586 / 07776 256131

RWP
Extensions and alterations often require a
Structural Engineer

Robert Wynter & Partners Ltd
01306 879875
Book House Vincent Lane
Dorking RH4 3HW

remedial roofing
For people with roof issues and deficiencies

- New roofs – slate & tiled roof specialists
- All roof repairs, moss removal & gutter clearance
- Flat roofs, traditional felt & GRP fibreglass
- New uPVC Fascia, soffit & guttering

Obtain an up-to-date report of remedial roofing on www.checkatrade.com

ALL WORK GUARANTEED
Call us today for a FREE quotation on:
01306 304736 | 07852 833802
info@remedialroofing.co.uk www.remedialroofing.co.uk

Confederation of Roofing Contractors
The Premier Roofing Trade Association in the UK
All Members Offer Insurance Backed Guarantees

Checkatrade.com
SURREY TRADING STANDARDS APPROVED

Dough delights!

The new academic year sees the nursery welcoming 27 new children. Some of the younger ones were only 6 months old when we entered the first Covid 19 lockdown. We have been very pleasantly surprised at how well these lockdown babes have adapted to being at nursery, it has also been a pleasure to actually see the faces of their parents too!

Just one week in and it was gluing and sticking galore as children created their pasta and pulse pictures for the Mickleham and Westhumble Horticultural show. They also created 'leaf bugs' by printing with leaves and adding features such as many legs, wings and stings. It was Amelie's rainbow leaf bug that was awarded the Irvine Cup, and she was most delighted to receive it.

We love autumn at nursery, as a season it provides us with so much to discover and explore. Lots of crunchy leaves, beech nut shells and the all time favourite conkers! At time of going to press, these are yet to appear, but we know these shiny delights will soon be arriving in pockets and we look forward to adding them to our natural play resources. Last year we learnt how to make conker soap and I am sure we will be revisiting this recipe again this year. We have just discovered another new recipe too. Slow cooker playdough. We love playdough at nursery, it is a very versatile sensory play item. The malleable properties of playdough make it fun for investigation and exploration as well as secretly building up strength in all the tiny hand muscles and tendons. As part of simple, tactile



play it can be squashed, squeezed, rolled, flattened, chopped, cut, scored, raked, punctured, poked and shredded! Each one of these different actions aids fine motor development in a different way, not to mention hand-eye co-ordination and general concentration. Our new slow cooker recipe makes a super smooth dough and the children have loved creating with it. Photos show 'lemon drizzle' dough.

Hilary Budd



Strong plastic carrier bags again needed for MPM deliveries. Please leave at St Anthony, Pilgrims Way or at the back of the church



Mickleham Village Hall Dell Close

Weekdays 9.15 am - 12.15 pm (term time)

WITH OPTIONAL LUNCH CLUB

On Mondays and Thursdays there is the option for children to stay until 2.45 p.m.

Maximum 26 children per session

• playing naturally • learning naturally

We offer an excellent range of pre-school activities for 2½ to 5 year-olds where they can learn through play in an informal friendly atmosphere.

Contact us for more information about admissions

01372 361021 www.stmichaelscommunitynursery.co.uk

Solution to the September crossword

Across: 1 Redivide 5 Nausea 9 Skincare 10 Strife 12 Impartial 13 Raked 14 Thug 16 Extinct 19 Norbury 21 Cock 24 Ounce 25 Bloodbath 27 Bishop 28 Begrudge 29 Donate 30 Navy blue

Down: 1 Rustic 2 Drippy 3 Vicar 4 Dorking 6 Antarctic 7 Stinking 8 Anecdote 11 Blue 15 Houseboat 17 Entombed 18 Grandson 20 Yobs 21 Cholera 22 Sandal 23 Cheese 26 Dirty

BRAIN TEASER answer: It fell off the back of a van



AllSaints Coffee Shop

Kingston Road, Leatherhead KT22 7BT

We are open with seating indoors and outside and for takeaways

8 am to 3 pm Monday to Saturday

Enjoy a range of speciality hot drinks, handcrafted sandwiches and homemade cakes.

We look forward to welcoming you back soon!

www.facebook.com/allsaints.so/

Instagram @allsaints_so



01306 885533

Enquiries@dorkingtaxis.co.uk

www.dorkingtaxis.co.uk

For immediate service please telephone. Future journeys (48 hours ahead) may be booked by email.

- 4/6/8 seaters • Home to school transport
 - Transport to airports/ferry ports/Eurostar
 - Courier services • Long distance journeys
- All drivers & vehicles are fully vetted by MVDC & SCC / Female drivers available on request
All major card payments accepted



Joseph

De Decorators

- Painting • Decorating • Wallpapering • Plastering • Tiling

Mickleham based 40 years' experience

01372 372331 07973 358 932

NEED A CARER?

Highly qualified professional carer
Hours to suit References available
Call Cheryl 07810 881267

Starry Night

What a wonderful start to the beginning of the academic year! We welcomed all children back to school on 2nd September with our youngest children taking part in home visits and half days at school. We can now welcome our families inside the school building and have a full term of events planned that include parents on site. We keep our fingers crossed that continues to be the case.

We started the term off by taking part in some 'Community Art'. The National Gallery run an event called 'Take One Picture'. Inspired by this, we have been creating our own version. We chose the picture 'Starry Night' by Vincent Van Gogh. This fits beautifully with our topic for this term, which is 'Take off'. The children in Years 1 and 2 painted their own version of the picture thinking about shades of blue and silhouettes. Have a look at our efforts.

Our reception children always start the year with painting their portraits and what better way to include them as Van Gogh loved a self-portrait. They took a close look at themselves, picked up a paintbrush and did a fantastic job. We will display them in our hall for everyone to enjoy and the children will be able to

sell their artwork to their parents at our parent curriculum evening.

Reading Framework

In September 2021, the government introduced a new 'Reading Framework'. The purpose is to emphasise how vital it is that all children become confident and proficient readers. There is also a particular focus on spoken language as the foundation for literacy.

In response to this, all schools are required to deliver a high quality, validated phonics programme. Research shows if children are confident and proficient readers at an early age, they have better educational outcomes and life chances.

At St Michael's we have successfully delivered a phonics programme called 'Read, Write, Inc' for a number of years. We are pleased that this programme is on the validated list and we are already meeting the requirements.

We have introduced a range of extra reading sessions to ensure the children engage in high quality texts that will hopefully inspire some lifelong readers. Comprehension skills as well as fluent decoding create a competent reader!



St Michael's School

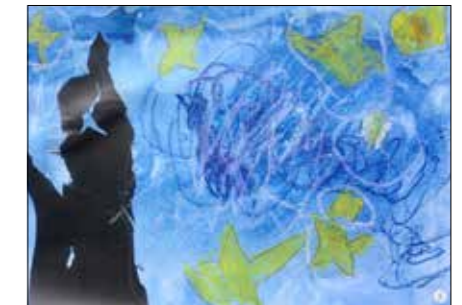
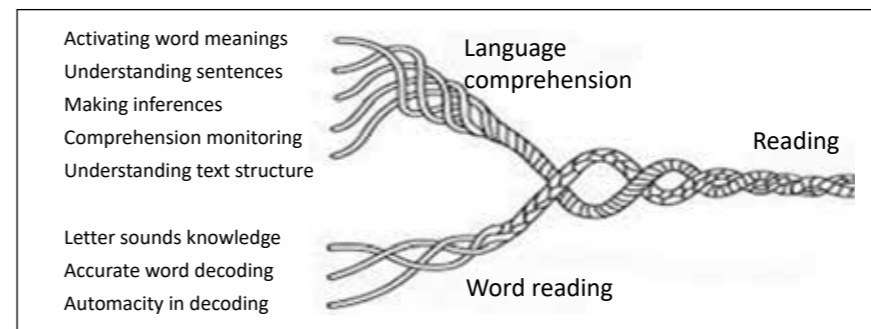
stmichaels-dorking.surrey.sch.uk/

Feel Fantastic Friday

As we move forward and the world opens up, we have been considering the well-being of our children as we embark on the next chapter at school. We decided to weave this together with the focus on engaging readers and came up with a 'Feel Fantastic' day.

What better way to start the weekend than with a focus on mind, body and soul. The children have taken part in PE sessions, Forest School sessions, yoga, meditation, fitness boosts and finally, they end the day with 'books and biscuits'. Going home tired, happy and enriched is the best way to start the weekend, I am sure you will all agree.

Nicola Cleather



Budding van Goghs at work and some of the great results.

Cryptic Crossword

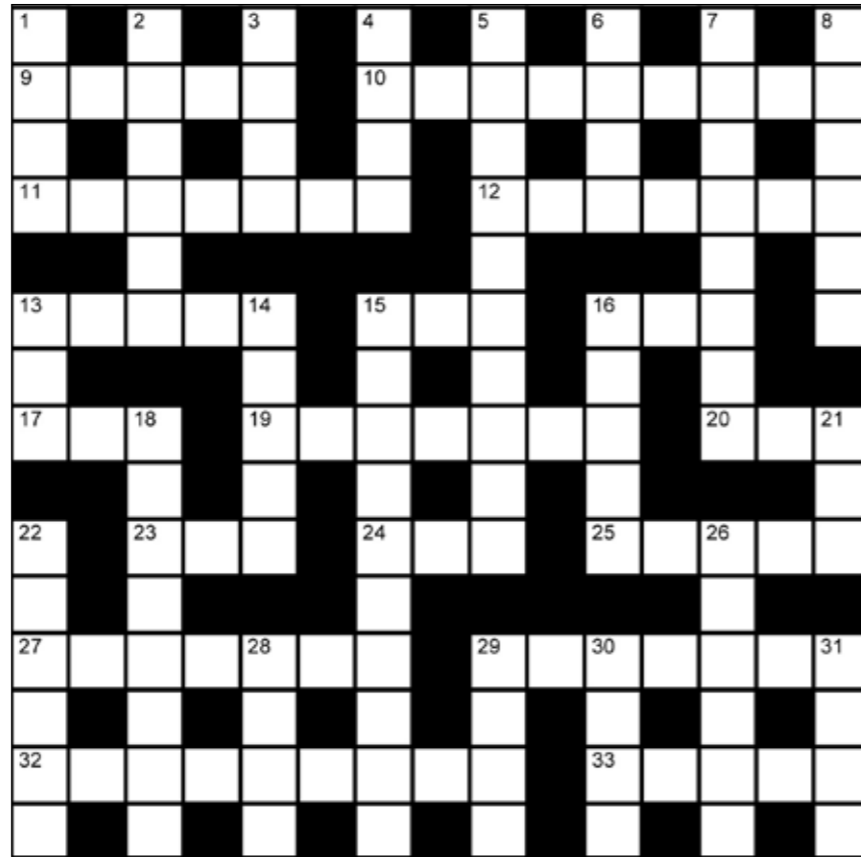
SPECIAL INSTRUCTIONS: In the clues and the answers are words that can make the titles of a set of 16 that comes from the theme. One of the set is missing – send that title to andrewt@andrewtatham.co.uk by 16th November 2021 and one correct entry will be randomly picked to receive any one of the 16 of their choice.

Across

- 9 The man painting is the epitome of courage (5)
- 10 Shake a dollar, I'm a creature of the New World! (9)
- 11 Raucous cheers about the start of confessions to where youngsters go to avoid their parents (7)
- 12 Go berserk after a brief afternoon back sinks into mania (7)
- 13 Gags when starting to solo in aircraft (5)
- 15 Sprite is the choice of a trio of important people (3)
- 16 Nat Tate, artist and entertaining quencher of thirst (3)

- 17 It's good for absolutely nothing to return in a natural condition (3)
- 19 Red nose is new sign on the bottom of champion (7)
- 20 It's 25 to act like this clanger on Just a Minute, so it's said... (3)
- 23 'The Opposite of Sunrise' without a star is just scenery (3)
- 24 Some final signs of an ordinary enema are completely out of order (3)
- 25 Person who vaguely heard the return of a brief war in Asia (5)
- 27/29D With a change in law, my libido became the driving force behind 10, 24 25 9, 14 2, 8 33, and 18 (7,4)
- 29 It's best to draw after having pot (4,3)
- 32 A city snob when drunk has the capacity of a mule (9)
- 33 See 8 Down

The solution to last month's crossword is on page 26.



Down

- 1 'A la mode' in this instance means 'with peach ice cream' (4)
- 2 Worries about sister's first kiss (6)
- 3 Small person not waiting in the middle for long (4)
- 4 Broadway is gone for stars beginning to booze before they're written in for performance? (4)
- 5 After surgery with MP, I reply or they might behave like this? (10)
- 6 First man whose ale wouldn't have led to a 29A (4)
- 7 Movement in lace gave what could be called an eyeful (8)
- 8/33 Slob lived in utter chaos saying that his wife apparently exposes herself (4,2,5)
- 13 Twice this was said to be better than twice 17 (3)
- 14 A good man drinks water for pudding (5)

- 15 In mad alien's recollection, things were rather spicy at this event (6,4)
- 16 Tough projections usually regularly presented in the face of American power (5)
- 18 Short break in music lesson relating to deprivation and having ants in one's pants (8)
- 21 The second in artist's extended sequence of performance pieces (3)
- 22 Important meeting with detainee - that's fantastic! (6)
- 26 Hello, say briefly what can be thrown in the face as a source of superstition (6)
- 28 Maybe something blue is around the heart of Africa (4)
- 29 See 27 Across
- 30 Goes out with babes not bothering with a disguise (4)
- 31 Primarily thunderstorms in Dogger end in sea level variation (4)

Andrew Tatham



Need help with your accounts?

Running a business needs time and energy – don't waste your time working on your accounts when you can work on your business instead!

At a4c we provide fixed fee accountancy solutions with friendly support throughout the year. Services include accounts, tax returns, VAT, payroll, book-keeping etc.

Friendly, approachable and local to Dorking – we enjoy getting to know our clients so call us today for a no obligation chat.

We LOVE numbers so YOU don't have to!

01737 652852

esther@a4cgroup.co.uk

www.a4cgroup.co.uk



RANMORE RENOVATIONS

LOCAL BUILDER

New bathroom installations, re-design, renovations, plumbing/heating, electrics, plastering & tiling, decorating, Karndean flooring, all building works.
All works guaranteed fully Insured
35 years' experience

Please contact Damian
07940 599845 / 01306 880332
musgrovebuild@gmail.com

GREAT MINDS DON'T THINK ALIKE
Learners Today, Leaders Tomorrow

At Box Hill School, we understand all students are individuals and approach learning in different ways. Our holistic approach to education develops our children's intellectual, social, physical and artistic talents. It encourages them to explore a path of self discovery thus stimulating the unique abilities within each child to achieve success.

INSPIRATIONAL DAY, WEEKLY & FULL BOARDING
Box Hill School | London Road | Mickleham | Dorking | +44 (0)1752 373882 | admissions@boxhillschool.com
Box Hill School boxhillschool.com

MEABY & CO solicitors
Strength & wisdom in law & business since 1848

Meaby & Co Solicitors sits proudly in the heart of Dorking High Street providing expert legal advice to individuals and businesses throughout the town and its surrounding area. With additional offices throughout London, our experienced team, our 5* Google reviews and award winning service will ensure that all of your legal needs are supported on your doorstep.

Specialising in:

Residential & Commercial Property	Fraud & Private Crime	Reputation Protection
Wills, Trusts & Probate	LGBT Experts	Commercial & Corporate Law
Litigation and Mediation	Employment Law	Media & Entertainment
Crisis Management	Family & Divorce Law	Lease Extensions

Drop by our offices at 159 High Street, Dorking RH4 1AD or contact our switchboard on 01306 884432. Need advice elsewhere? We can assist. We have branch offices in Camberwell, Soho & Chigwell.
Switchboard: 01306 884432 www.meaby.co.uk @MeabyandCo meaby-&co MeabyandCo meabyandco

John Wadsworth

CALL NOW FOR YOUR FREE VALUATION
01372 450500

www.johnwadsworth.co.uk sales@johnwadsworth.co.uk
A professional efficient and friendly service



**RESIDENTIAL • COMMERCIAL
AGRICULTURAL • SCHOOLS • ACOUSTIC
HOARDING • GATES • SECURITY**

**RICHARDSON & BRADS FENCING LTD
T: 01306 640 143 - 01483 414 745**

E: INFO@RBFENCINGLTD.CO.UK

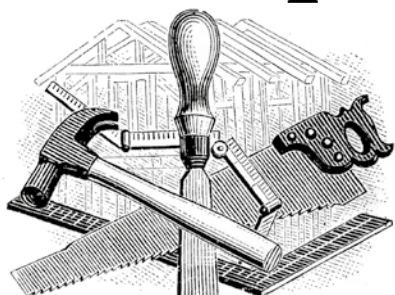
W: WWW.RBFENCINGLTD.CO.UK

A: 168 SOUTH STREET, DORKING, SURREY, RH4 2ES
UNIT 45 MARTLANDS INDUSTRIAL ESTATE, SMARTS HEATH LANE, MAYFORD, GU22 0RQ

J S Wilson

Mickleham

Carpentry & Building Services



Extensions ~ Conversions
Refurbishments ~ Property Maintenance
Fully guaranteed ~ Fully insured

One call WILL solve it all

Contact Jason on: 07761 926684 or 01372 379359

jswilsonconstruction@gmail.com



Bespoke, quality kitchens designed & supplied by Jan Callicott of Westhumble.
Contemporary or traditional cabinetry with a friendly, pragmatic project management style.



www.eatonsquareinteriors.co.uk
enquiries@eatonsquareinteriors.co.uk
07873 216111

BLANCO Quooker®
caesarstone®

Eaton Square Interiors
Meetings by appointment