



# South Downs National Park - Installation Update

Issue Date: June 2022

For the latest information about installation of the replacement pipeline, please visit [www.slpproject.co.uk](http://www.slpproject.co.uk) or simply scan the QR code.

## Current works

- There is ongoing open cut installation from Winchester Road to Wheely Down Farm Lane and from Wheely Down Farm Lane to Petersfield Road A272. As part of these works, Bigpath Lane, Cross Lane, Brockwood Bottom, Kilmeston Road and Wheely Down Farm Lane will be closed for around two weeks each between March and July 2022. Signs and diversions will be in operation during road closures.
- We doing ecological mitigation works from Headmore Lane to Gosport Road A32.

## Upcoming works

### In July:

- We will start open cut installation from:
  - Petersfield Road A272 to Tithelands Lane.
  - Tithelands Lane to Stapley Lane.
  - Stapley Lane to Petersfield Road.
  - Headmore Lane to Gosport Road A32.
  - Gosport Road A32 to Selbourne Road.
- We will be installing a temporary construction compound off Petersfield Road A272.

**In August**, we will start trenchless crossing installation under Gosport Road A32 (TC006).

If you have any additional questions email us at [info@slpproject.co.uk](mailto:info@slpproject.co.uk).

You can also keep up to date with the latest news by following us on **Facebook @SLPConstructionProject**, **Twitter@ConstructionSLP** or by signing up to our newsletter at [slpproject.co.uk/signup](http://slpproject.co.uk/signup) to get regular updates.



## Keeping 100 road tankers off the road every day\*



Based on Esso's 2015 data for its existing pipeline

For more information please visit [www.slpproject.co.uk](http://www.slpproject.co.uk)



07925 068 905



[info@slpproject.co.uk](mailto:info@slpproject.co.uk)



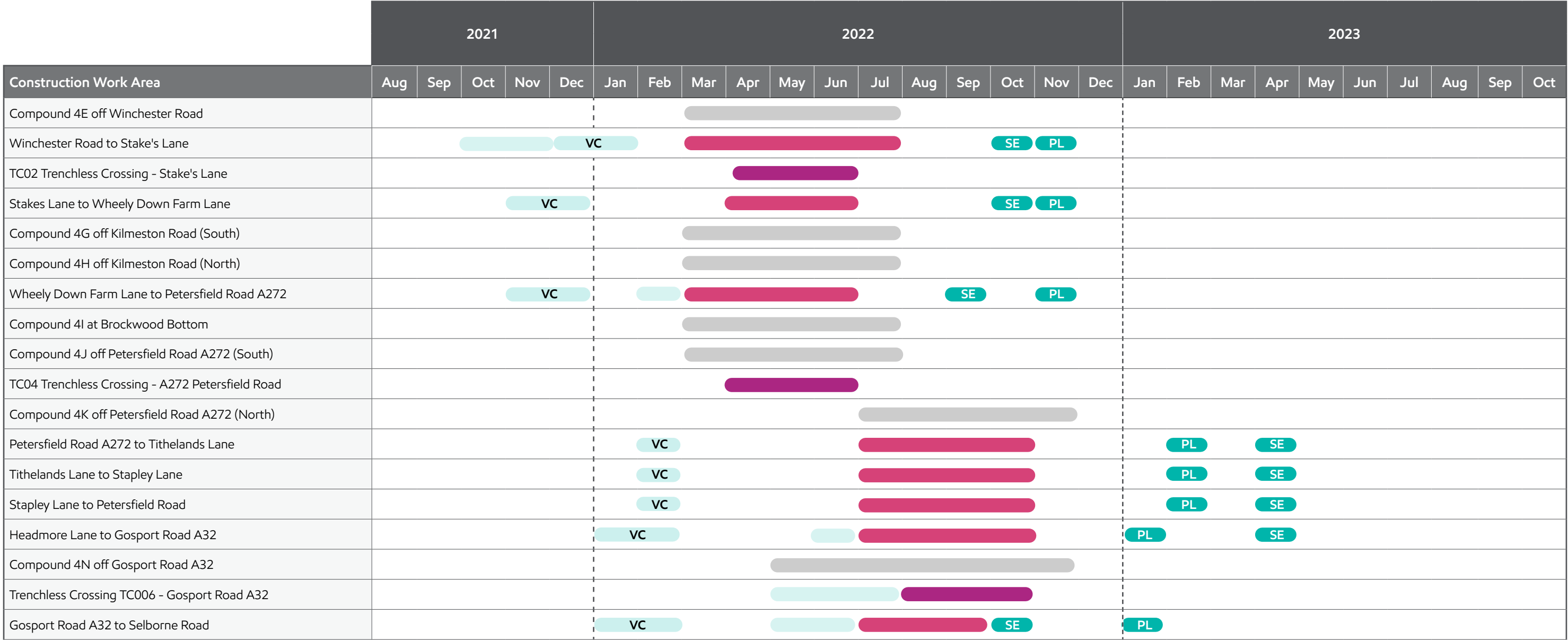
[@ConstructionSLP](https://twitter.com/ConstructionSLP)



[@SLPConstructionProject](https://www.facebook.com/SLPConstructionProject)



# Phasing of works – South Downs National Park Authority



**Key**

Advanced works / ecology mitigation

ST Strimming

VC Tree and Hedge Clearance

Trenchless crossing including work area and access

Open cut works rural / semi rural

Open cut streetworks

Compound in use

Reinstatement

SE Seeding

PL Planting

**i**

We are now releasing a local, area specific timeline for installation. This gives an indication of when we expect to be working in each area. We'll let you know at least two months in advance of any work starting and provide further detail of expected duration. Since we are currently progressing detailed design, the timetable may be subject to some additional change as we finalise our plans and work to reduce overall disruption during construction. Please be assured that if our plans change, we'll keep you informed. Once the pipeline is buried, it will be a quiet neighbour.

# Community charter



## Plenty of notice

We'll let you know at least two months in advance of any work starting and if our plans change, we'll let you know.



## Here to help

We'll let you know at least two months in advance of any work. Our local team will be available by phone or email to answer any questions you have.



## Information directly to you

Our local area e-newsletter and alerts will let you know what's happening. Where we are working in streets or roads, we'll operate a dedicated text service to inform interested residents.



## In your area

We'll make sure information about installation in your area is easy to find on our website, in a way that is easy for you to identify what's important to you. In some public parks, we'll hold pop up events to meet with those using the facilities and give out information about our installation plans.



## Talking to landowners

All landowners affected by the installation will have a dedicated member of our lands team to contact to discuss our work.



## Open and honest

We'll be clear about our works and any disruption that may take place.



## Safe and secure

We'll keep our team safe, and we'll keep you safe. Our commitment to health and safety is at the heart of our business and we'll make sure your safety is not impacted by our work.



## Well managed sites

Our sites will use fencing suitable to the location and we'll use things like wheel-washing on our vehicles to keep the surrounding roads clean.

