

A community newsletter funded by Mabe Youth and Community Project and Mabe Parish Council to provide news, share views and publicise events. Printed by Booths Print, Penryn.

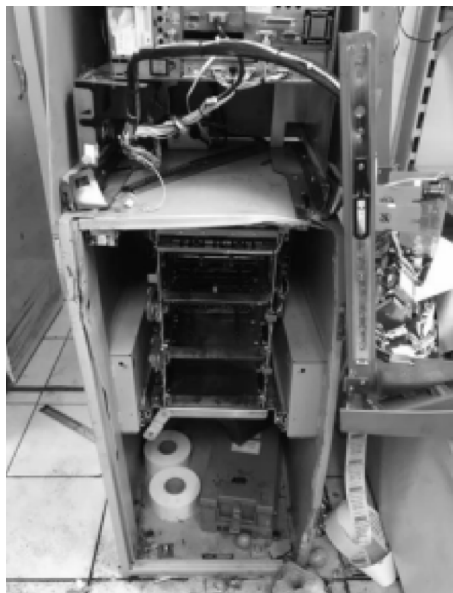
## Thieves target Mabe Post Office and Church

In two separate incidents, both Mabe Church and Mabe Shop have been targeted by thieves.

Firstly, a window was smashed during what appeared to be an attempted break-in at the church, prompting Rev Steve Smith to comment:

"What they thought they'd find inside that was worth pinching is beyond me. A few brass candlesticks? The wall hanging made by the Brownies? Kneelers made by the people of the parish down the years? "

"Apart from that there's just the prayers of centuries, hope for the future, inclusive love for the world - oh and a warm welcome for anyone and everyone."



The front of the ATM was ripped open and the contents stolen

"Maybe they could just use the door next time?"

Then, overnight on July 17/18th Mabe Stores & Post Office was broken into. The thieves apparently entered through the roof, before breaking through the ceiling tiles to break open the ATM.

Steve Nisbet, who has owned the shop for 19 years, said that he had put £2000 in the machine on Wednesday 17th, so the *Cont. p.5*

### Inside:

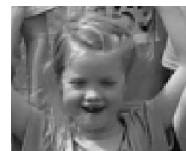
News, p.1-6

**Ofsted**  
raising standards  
improving lives

Diary & What's  
On, p.7-10



Articles, p.10-16



## Parish Council declares a Climate Emergency

Following the unanimous support of Mabe Parish Council to declare a climate emergency, we are now working on an action plan to outline how we plan to ensure that Mabe Parish is carbon neutral by 2030. The council has pledged to:

- Make Mabe Parish Council carbon neutral by 2030, taking into account both production and consumption emissions
- Call on Westminster and Cornwall Council to provide the powers and resources to make the 2030 target possible
- Work with other government to determine and implement best practice methods to limit Global Warming to less than 1.5°C
- Continue to work with partners across the parish of Mabe to deliver this new goal through all relevant strategies and plans
- Prepare a report within 6



Stephan Harrison

months with the actions Mabe Parish Council will take to address this emergency

In order to help move this forward we invited Stephan

Harrison from Exeter University, and Luci Isaacson of Climate Vision to

talk to us at the July meeting, which was well attended by members of the public and which resulted in us forming a good-sized Climate Action Group which will meet regularly, write the action plan and make recommendations to the council.

Cornwall Council also declared a climate emergency earlier this year and is encouraging people to sign up to complete Climate Vision's 10 green pledges which will help each of us tackle climate change. Leaflets with the 10 pledges are being distributed to people at events such as the Royal Show and can be downloaded here:



<https://climatevision.co.uk/top-ten-pledges>

As Edwina Hannaford, Cabinet Member for Neighbourhoods and Climate Change, said: "We know that meeting the requirements of the climate emergency motion will not be achieved through our actions alone. Reducing greenhouse gas emissions will require significant action from nearly every service from within Cornwall Council and action from every person, community and business across Cornwall.

*Cont. opposite*



We will have to look at changing the way we do things, from the energy we use, to the products and food that we buy. This will be relevant to all residents of Cornwall."

Mabe's Climate Action Group will be looking at ways of helping everyone achieve this goal, so look out for our plans and further information in future editions of Mabe Matters.

*Cllr Tessa Kingsley*

## Plans submitted for thirty new houses in Mabe

Despite an earlier application being turned down on appeal, a planning application has been submitted seeking permission to build 30 homes south of Coronation Cottages.

Mabe Parish Council has "vigorously" objected to the application and recommended it for refusal to Cornwall Council who will have the final say.

Councillors felt that the estate would not address the needs of community. Traffic concerns and lack of affordable housing were cited as reasons for objecting.

Developers South West Strategic Developments have marked 30 per cent (9) of the proposed homes as affordable.

In an online portfolio on South West Strategic Developments' website, the developer described



*The plans to build on land south of Coronation Cottages*

the proposed estate as a "high-quality village development which is in a sustainable location".

It claims it will provide "a well designed development of new homes, including affordable properties, which increases the opportunity for home ownership in this area."

The company stated that a public consultation was carried out, with more than 90 letters delivered to houses in the area and to Mabe and Penryn councillors in February 2017.

At the time of writing the consultation period has closed and counsellors await the decision during the first week of August.

## Mabe School rated 'inadequate' by OFSTED



In it's latest Ofsted inspection in June, Mabe School has been rated as Inadequate.

Inspectors found that:

↘ The trustees have not implemented effectively statutory policies and procedures to keep children safe.

↘ Leaders' day-to-day safeguarding systems, including for pupils who may be at risk, are not good enough. There is a poor culture of safeguarding children.

↘ The impact of governance is poor. The better challenge and working practices of the new interim advisory board (IAB) are very recent. The use of pupil premium funding is not monitored stringently.

↘ The number of pupils on roll is increasing markedly. Leaders have not ensured that the good-quality teaching seen in the past has been maintained as the school grows.

↘ Some pupils, particularly the most able, are passive in their learning because teaching does not challenge them sufficiently.

↘ Teaching assistants do not have a strong understanding of the school's curriculum. Therefore, teaching assistants do not

add to pupils' learning sufficiently.

↘ Teaching does not support those pupils who struggle to read accurately well enough. Some pupils do not use their knowledge of phonics to spell accurately in lower key stage 2.

↘ The school's curriculum is not demanding enough. Teaching does not challenge pupils appropriately in humanities and science.

↘ Some pupils with lower attainment or those with special educational needs and/or disabilities (SEND) do not make the progress they should. Teaching does not address pupils' misconceptions consistently well.

Looking on the bright side, they also found that the school has the following strengths

↘ The purpose-built Nursery provides a positive start for children's education. Adults use assessments well to ensure that teaching matches children's needs.

↘ Pupils who join the school at times other than the usual transition points settle quickly because of the strong support they receive.



↳ Pupils enjoy school and attend well.

↳ Leaders' actions over a sustained period have ensured that the school's programmes of study in English and mathematics are well planned and ambitious.

↳ The teaching of writing and mathematics is effective in key stage 1.

↳ Pupils are a credit to the school. Most are kind, thoughtful and show respect for one another.

Read the full report at



[www.mabe-school.co.uk/app/download/23764520/Mabe+Ofsted+June+2019.PDF](http://www.mabe-school.co.uk/app/download/23764520/Mabe+Ofsted+June+2019.PDF)

## Memorial Garden

Can you spare an hour or two to maintain the Memorial Garden next to the WI Hall?

We need volunteers to help with cutting back shrubs, weeding, digging over the beds and creating a new path.

We'd also welcome any donations of plants and bulbs. Please contact the parish clerk Lisa Clements, [mabeparish@gmail.com](mailto:mabeparish@gmail.com)

## Traffic Consultation

The consultation on traffic improvements in the village should be live by the time you read this,



so log onto the Cornwall Council website and make sure your views are heard.

[www.engagespace.co.uk/cornwall/default.aspx](http://www.engagespace.co.uk/cornwall/default.aspx)



The village centre is becoming ever more congested and we are keen to reduce the number of vehicles which use Antron Hill to travel between Longdowns and Kernick Road.

The traffic situation is one of the most hotly debated topics amongst all residents so we would urge everyone to contribute to this long-awaited consultation.

*Cllr Tessa Kingsley*

## Break-in at Mabe Stores

*Cont. from front page* amount stolen would depend on how much had been withdrawn that day.

Steve said that nothing else had been stolen, although the culprit left a mess behind.

"We did catch them on CCTV," he added. "It was dark so you can't see them clearly but it shows what happened.

Anyone with information is asked to contact police via [101@dc.police.uk](mailto:101@dc.police.uk) or by phone on 101, quoting crime reference CR/064209/19.



Devon &  
Cornwall Police



## Just a thought...

I'm writing this the day after the 75th anniversary of the allied forces' D-Day landings during the Second World War.



This helped to bring about the eventual defeat of the tyrannical Nazi regime in Europe and commentators are saying that those ordinary men and women who took part the landings were "the bravest generation".

Defeating the evil forces of the day certainly took great courage – and back then, as always, the cost was high.

There's a saying, "All that is needed for evil to triumph is that 'good people' do nothing".

The fact is that in every generation, including ours, the evils of injustice, intolerance, greed and hatred – and there are plenty of them around at the moment – must be seen for what they are and called out and defeated.

As always it is ordinary people like you and me, who might not necessarily see ourselves as very "good people" but who are nevertheless urgently needed to stand up to the wrongs we see being perpetrated around us.

This needs us to have courage and determination every bit as much as those D-Day heroes so

that it is goodness, justice, mercy, love that triumph. Then we can leave it to future generations to sort out which generation, if any, should be considered the bravest.

*Rev Steve*

## 300 Club winners

The results for the 300 club draw are:



1st Prize £50: Patricia Lawrence

2nd Prize £30: Joy Barnicoat

3rd Prize £10: Ann Brown

For more details on joining, please contact Rachelle at the MYCP on 01326 375938 or email [mabeycp@gmail.com](mailto:mabeycp@gmail.com).



*ex-Mabe School pupils Naomi and Star at the Penryn College Prom*

Mabe Burnthouse Village



Please send details of events happening within Mabe civic parish in Oct/Nov to [mabematterseditor@gmail.com](mailto:mabematterseditor@gmail.com) by 15 September 2019. Venue details:

- Mabe Community Hall, Cunningham Park (375938 or [mabeycp@gmail.com](mailto:mabeycp@gmail.com))
- Mabe Community Primary School, Cunningham Park (secretary, 372662)
- Mabe Parish Church (St Laudus), Church Road, towards Higher Spargo (administrator, Pauline Cheshire, 340425)
- Mabe WI Hall, Antron Hill (bookings, 372477)

## Weekly Events

- Mon** **Short Mat Bowls Club**, Community Hall, 2-4pm. Contact Keith Bryant, 373102.  
**Cardio Box/Fitcamp Class**, WI Hall, 6.15-7.15pm. Contact Ali or Carmela, 07988 140745.  
**Mabe Keep Fit Club**, WI Hall, 7.30pm.  
**Open Water Swimming**, Kernow Adventure Park, 6-8pm. Contact, 07817 662 962
- Tues** **Age Concern Luncheon Club**, Community Hall, 12.30-2pm. Contact Community Hall (11.30-12.30pm), 377475.  
**Slimming World**, Community Hall, 4.30 & 6.30pm. Contact Pam Mundy, 01209 204743 or 07503 945600.  
**Nature Playgroup**, Chyan Community Field, 10am-12pm term time. Contact Alice, 07576 748450.
- Wed** **Short Mat Bowls League (winter only)**, Community Hall, 2-4pm. Contact Keith Bryant, 373102  
**Daisy's Yoga**, Chyan Cultural Centre, 6-7pm. Contact Daisy, 07837 879876
- Thurs** **Kernow Huffa Puffas**, a support, exercise and social group for people with COPD and their carers, 10am-12pm, Community Hall. Contact Trish, 07814 911406 or Rick, 07599428364.  
**Carpet Bowls Club**, Community Hall, 2-4pm. Contact Arthur Searle, 377088.  
**Brownies**, Community Hall, 6.15-8pm. Contact Jackie Williams, 372863.  
**Aikido**, Japanese martial art, beginners welcome, 7-9pm, Mabe School. Contact Jamie Matthews, 375336.
- Fri** **Short Mat Bowls Club**, Community Hall, 2-4pm. Contact Keith, 373102.
- Sun** **Trenoweth Methodist Church**, Community Hall, 10.45am-12pm. Contact Margaret Bryant, 373102.  
**Mabe Parish Church (St Laudus)**, with St Michael's Church, Ponsanooth – please see the Diary for the times of services.  
**Aerial Yoga Jam**, Chyan Cultural Centre, 10am-1pm. Contact Nay, [naysjoga@gmail.com](mailto:naysjoga@gmail.com).



(All six-digit phone numbers are 01326 unless specified)

# Mabe Diary

## August 2019

**Wed 7 - Trenoweth Methodist Church Cream Tea**, Community Hall, 3-4.30pm. *Everyone welcome.*

**Thurs 8 - Parish Council meeting**, WI Hall, 7.30pm. Agenda available on the Parish Notice Board and website ([www.mabeparish.co.uk](http://www.mabeparish.co.uk)). Open to the public. Contact Lisa Clements, 07964 735219, [mabeparish@gmail.com](mailto:mabeparish@gmail.com)

**Sun 11 - Garden Party**, Mabe Vicarage, 1-5pm. *See What's On.*

**Sun 11 - Quiz Night**, New Inn, 7pm.

**Tues 13 - Aussie Christmas BBQ**, The New Inn, 4pm. *See p.10.*

**Wed 14th - DementiaUK Cream Tea**, Glenderry, 3-4.30pm. *See What's On.*

**Sat 17 - Charity Car Wash**, Community Hall. *See What's On.*

**Thurs 22 - Cornwall Astronomy Society**, 8pm, WI Hall. Contact Simon Dunkley, 564046.

**Fri 23-Mon 26 - Summer Circus Camp**, Chyan. *See p.10.*

**Sat 24 - Grass Cutting**, Mabe Church, 9.30am -1pm. *See p.11.*

**Sun 25 - Quiz Night**, New Inn, 7pm.

## September 2019

**Sun 1 - Trenoweth Methodist Church Harvest Festival**, Community Hall, 10am.

**Mon 2 - Bring & Share Supper**, Community Hall. *See What's On.*

**Tues 3 - WI Meeting: Harvest Supper and Auction**, 7.30pm, WI Hall.

**Sun 8 - Quiz Night**, New Inn, 7pm.

**Thurs 12 - Parish Council meeting**,

WI Hall, 7.30pm. Details as for August.

**Mon 16 - Mabe Garden Club: Cuttings & Propagation**, 7pm, Community Hall. Contact David, 376568.

**Sun 22 - Quiz Night**, New Inn, 7pm.

**Thurs 26 - Cornwall Astronomy Society**, 8pm, WI Hall. Contact Simon Dunkley, 564046.

### St Laudus Church, Mabe



#### August

**Sun 4th** - 10.30am, Special service at Mawnan Smith Old Church to bless intern Natalie Jennings as she heads off to train as a priest at Durham Theological College.

**Sun 11th** - 9.30am - Holy Communion

**Sun 18th** - 9.30am - Holy Communion - traditional service

**Sun 25th** - 9.30am - Holy Communion - with prayers for healing. Plus 'Quiet Space' (informal, candles, quiet music) at 7.30pm

#### September

**Sun 8th** - 9.30am - Holy Communion

**Sun 15th** - 9.30am - Holy Communion - traditional service

**Sun 22nd** - 9.30am - St Laudus day + Peace Sunday: Joint Holy Communion and healing prayer with the congregation from St Michael's. Plus 'Quiet Space' (informal, candles, quiet music) at 7.30pm

**Sun 29th** - 11.15am - St Michael's Day - Joint Holy Communion at St Michael's, Ponsanooth



*(All six-digit phone numbers are 01326 unless specified)*

## What's On

Trenoweth Methodist Church are holding a **Cream Tea** afternoon in the Community Hall on Wednesday August 7th from 3-4.30 pm. Everyone is welcome.

Also, it will be their **Harvest Festival** on Sunday September 1st. The service will be at 10am in the Community Hall and will be a joint service with St. Laudus Church. On the Monday following (2nd) there will be a **Bring and Share Supper**, followed by the sale of produce. We extend a warm welcome to all to both of these events.

Mabe Church are running a couple of events in aid of the Church Roof Fund.

On Sunday 11th August from 1-5pm, there will be a **Garden Party** at Mabe vicarage on Church Road (5 doors up from the pub car park if you're new to Mabe!). There will be stalls, games, raffle, face-painting, barbie, and other refreshments. All welcome and free entry!

Then on Saturday 17th August why not bring your car along to the Community Hall car park for a **Car Wash**? Refreshments provided.

The annual **Dementia UK Cream Tea** will take place at Glenderry (opposite the Post Office) on 14th August at 3pm.

DEMENTIA UK  
**CORNWALL**

**CREAM TEA**

WEDNESDAY 14th AUGUST



FROM 3.00 - 4.30 pm  
**GLENDERRY, ANTRON HILL**  
*Everyone welcome*

Dementia UK provides support both in the community and in care homes and hospitals, including a specialist dementia nurse at Treiske.

There will be homemade scones, splits and jam plus delicious Cornish clotted cream! Please join us!

### SAVE THE DATE

The Christmas lights Switch on this year will be on Saturday 30th November at 6:30pm with entertainment from 5:30pm. Mabe Christmas

Lights have raised more funds this year (so far) than ever before and have been reaching

out to experts in the 'village lights' department for new inspiration to the central pieces in the village so watch this space!



## Aussie Christmas BBQ

It's been a sizzler of a summer so far and the Mabe Christmas Lights team have their fingers and toes firmly crossed that this year's Aussie Christmas BBQ will be blessed with oodles of sun and not so much of the wet stuff!



The MCL gang have been busy digging out the tinsel and hawaiian shirts ready for their annual Christmas themed BBQ which will be starting at 4pm on Tuesday 13th August (Falmouth Week) at The New Inn.

The beer garden is the perfect spot for a Christmassy summer party and with lots of lovely refreshing drinks and local ales, we hope to pitch up early and make the most of the day.

In addition to the funds raised from the BBQ this year, two villagers have also vowed to raise sponsorship by performing a stunt on the day. Karen Phillips and Harry Martin will be sitting in a bath tub of gravy for one hour in order to raise extra cash for Mabe Christmas Lights. They will be immersing themselves into the tub at 4.30pm so if you want to enjoy your hot dog, ale with some visual entertainment, be

sure to get there early!

We hope to see many of your tanned faces sporting your tropical garb and Christmas accessories on the 13th from 4pm. Happy Summer lovely folk.

*Emma-Louise Phillips*

## Summer Circus Camp

Want to train with the Swamp circus this summer at Chyan Community Field from 23-26 August?

Set in the beautiful Cornish countryside get one-one tuition from experts. Be entertained in our big top. Relax and unwind in our saunas and solar showers. Activities include Acro-balance, Aerial Acrobatics, Juggling and Object



manipulation, Cyr Wheel, Yoga, Tumbling and so much more!

You can find the full programme and more details on [www.facebook.com/pg/swampcircuscornwall/](https://www.facebook.com/pg/swampcircuscornwall/)

Cost: £100 (includes camping)

## Lots to do at Mabe Church!

We always wait to mow the grass in the churchyard until the early summer to help the wildlife but this year you've probably noticed we are struggling to get it cut and would love it if you could help please while we sort out a long-term plan. Our next Grass-cutting Day is Saturday 24th August 9.30am-1pm - (come when you can, go when you must!). Bring a (petrol) mower or strimmer, shears etc and together we can keep our churchyard looking spruce again. Free cake & drinks!

Also, would you learn to learn bellringing? Can you sing?

Mabe Church bellringing team is open to anyone who wants to have a go at ringing, whether you're an expert or a novice! If you like singing, Lilian Miller runs the choir and is also looking for new choir members. You don't need to be someone who goes to church on Sundays - we're looking for people who want to play a part in enhancing the life of the local community and have fun at the same time. Come and have a go!

*Rev Steve*

## Another George needed

Mabe Matters, your community newsletter, funded by the MYCP and Mabe Parish Council, started in October 2010. Since then a group of energetic volunteers have worked tirelessly to deliver

the magazine to your door in all types of weather.

The oldest member, with the largest round, George Kingston has decided, after delivering almost 6,000 newsletters, to take life a little easier and to give up pacing the roads of Mabe.

We would like to express our thanks to George and we hope that more people will volunteer from the community to take his place. We are one of the few local villages to deliver the newsletter to the whole of the parish. We can only continue to do this if more people volunteer to help. If you would like to help please contact the Editor or Liz Dunstan on 373232.



*Mabe Brownies Nancy and Imogen enjoying some of the craft projects on offer at Myths and Magic - a sleepover for all 125 girls in the district!*

## Primelin Twinning Association visit Mabe

The month of May saw our most recent visit from our French Twinning counterparts from Primelin in Finisterre, Brittany. They arrived on a Sunday at midnight in a minibus, their plans nearly scuppered by an engine fire on board the Pont Aven last week.

We split up during the Bank Holiday daytime, some visiting Penlee Gallery in Penzance, others Trelissick House and Gardens. We all met up in the evening in Falmouth for fish and chips at the Harbour Lights followed by Breton dancing at the Front.

By Tuesday, the weather had taken a turn for the worse, with us braving the exposed Cornish moorlands of Indian Queens and the Screech Owl Sanctuary. Happily, we were warmly welcomed there by a young team of enthusiastic guides who introduced us

to the owls, let us stroke them and gave a flying display and talk.

In the afternoon, we were given a lively and interesting tour of the Lifeboat Station in Falmouth, taking us over both the inshore and offshore lifeboats. Chris Spink had organized our party into two groups, those speaking English and those not. One of the RNLI volunteers was French and kindly helped with translation. Many of the group were amateur sailors acquainted with the SNSM, the French equivalent, and were fascinated by the comparison.

The evening was spent at Country Skittles near Leedstown, combining good food and fiercely fought silly games.

The trip had been timed to coincide with Flora Day, which our friends had wished to visit for a long time. The weather was unseasonably cold and windy,



*Mabe and Primelin's Twinning Association members enjoyed an evening at Country Skittles*

which obviously was more of a problem for the poor dancers than for us. We arrived in time to see the end of the Parc Eglos Dance with the youngsters dressed in white and joined the crowds at the Guildhall for the Midday Dance. Sophisticated Helstonians walked up the hill alongside us lining up inside the Guildhall in preparation for the procession. Expectations rose as the clock ticked towards noon and the crowds were in good heart. As the drum beat to begin the dance, so the heavens opened and hoods went up on every kagoule and raincoat in unison. Moved by the occasion and the sight of the dancers, we waited for them to loop back through the streets then sought shelter.

We all met up again in the evening at the New Inn where we could enjoy a good meal and more than a few pints.

Thursday was a "free range" affair for the French party who wanted nothing more than to spend time in Truro, shopping and visiting the Museum and restaurants. They do like their food. Re-scheduling of the ferry crossing meant that they had to leave Mabe at 4.30 Friday morning, so an early night was in order. After meeting up to exchange gifts and bid our guests farewell, the group dispersed to spend the evening with their hosts.

Blearily we waved our friends off at the crack of dawn, whispering plans for our return visit to Brittany next year, "A l'année prochaine".

We welcome new members and anyone interested in joining the Mabe Twinning Association can contact Denise at [denisedavey@tiscali.co.uk](mailto:denisedavey@tiscali.co.uk) (01326 378505).

## MacMillian Coffee Morning

Members of Mabe Short Mat Bowls Club have run the MacMillian Big Coffee Morning for many years.



This has become a burden on the ageing membership, and no one is able to organise it this year.

The Club Chair Keith Bryant is very keen that the event still runs, and as in previous years will pay for the rental of the Community Hall for the morning of Friday 27th of September.

If anyone is willing to help or take over organising the event please mail Keith on, [keithb.cornwall@gmail.com](mailto:keithb.cornwall@gmail.com).



## Foal born at Flicka

Pay us a visit at The Flicka Foundation this summer and meet Sophia, the latest donkey to find sanctuary with us, and her delightful newborn foal.

In her late teens, Sophia has likely spent most of her life pregnant, breeding to fuel the meat trade in France and Italy. We rescued her at the end of June, when she was heavily pregnant once again, she and her foal both destined for dinner plates on the continent.

Tired and depressed at first, Sophia soon brightened up in our care, and we found her to be an incredibly loving and friendly donkey - amazing considering all that she has endured.

Her foal was born at Flicka in the early hours of Saturday 13 July, a beautiful and very long legged boy, the largest foal ever to be born at the sanctuary. Sophia is proving to be a very protective and attentive Mother to her beautiful new baby.

She is very underweight and will need lots of specialist attention and treatment to ensure she is healthy enough herself to care for her son. Poor Sophia will have had many foals all cruelly taken from her at a young age, but this time will be different and she and her newborn will be free to live their lives, together at Flicka, safe and happy.



*Sophia and her new foal*

As a sanctuary, we don't breed donkeys, for ethical and practical reasons, but, as was the case with Sophia, sometimes donkeys are already in foal when they arrive with us.

Everyone in the Flicka team is ecstatic to welcome another new foal to the herd. The new arrival's name will be chosen by our supporters through a naming competition. Follow us on Facebook @TheFlickaFoundation and Twitter @flickadonkeys to find out more and to stay up to date on all the latest donkey news.

## Garden Club - Pinsla Garden Talk

Mabe Garden Club welcomed Claire Woodbine to their May meeting to learn all about Pinsla Garden and Nursery, near Cardinham, on the edge of Bodmin Moor.

Claire and her husband Mark bought the property in 1982, at which stage the garden was swamped by an overgrown forest of Laurel which overshadowed and suffocated all other plants and did not at first site seem a promising home for a keen gardener.



Charting their hard work, Claire illustrated with dozens of stunning photographs how the Laurel had been removed and over decades replaced by a tapestry of colourful planting.

The current garden is still surrounded by woodland, with many self-seeded birch and the couple have tried to allow nature to continue to play a large part with plants such as mosses, lichens, fungi, foxgloves and campions drifting in from the wilder areas.

The range of plants that Claire

had introduced into a relatively small area was breath-taking; with huge numbers of herbaceous perennials such as *Cranesbills*, *Lysimachia* and *Alstroemerias*, to name but a few.

On the borders of the plot, shrub and trees such as Acers, Rhododendron and Azaleas, softened the transition into woodland and added extra colour to the many vistas visible within the garden itself.

The couple's use of sympathetic hard landscaping, such as a stone circle that looked as if it originated from Neolithic times, rather than the 90's, and creative examples of "quirky" statuary complemented the verdant planting schemes and gave many points of extra interest for visitors to discover.

All-in-all this was an inspiring talk which showed what hard work and talent can achieve in difficult surroundings. For those interested in visiting the gardens Claire warned them to be quick – this is the last year it will be open to the public as they are going to take a well-deserved retirement!

Claire finished by answering a range of questions from the audience, and was given a fulsome vote of thanks by Committee Member Val Bidgood, before holding an impromptu plant sale which was keenly supported by many members. *David Fields*

## Can you spare an hour a week?

To visit a lonely old person? Volunteers are urgently needed by Falmouth Age Concern.

The charity has run a successful Befriending Service in Falmouth and Penryn for the past 12 years and is now extending it to Mabe and beyond.

They are seeking volunteers to

visit a lonely, elderly person for a chat



once a week. It's a simple service just offering some company and human contact to those who need it most.

If you are interested, please contact Falmouth Age Concern on 01326 313620.



*10 super sporty Curlews (year 2) from Mabe School walked down to Penryn College for a morning of Mini Olympic activities in June. Luke, Skye, Jowan, Abi, Harry, Bailey, Flynn, Edie, Zach and Maisy did the school proud and won the event. Such superstars!*

**Mabe Matters** is published by Mabe Youth and Community Project, Cunningham Park, Mabe Burnthouse, Cornwall, TR10 9HB. Editorial Team: Liz Dunstan, Jackie Frost, Liz Westhead, Candia Cox (illustrations), Amanda Wills (editor). Distribution co-ordination: Liz Dunstan.

Deadline for next issue: **15 September 2019**. Please send your events, news, notices, letters etc to the address above or to [mabematterseditor@gmail.com](mailto:mabematterseditor@gmail.com).