



VILLAGE VOICE

NEWINGTON PARISH COUNCIL
MARCH 2024



Newington Fete – a date for your Diary

Newington village fete will be held on Saturday 13th July
we hope to have the dog show plenty of stalls
and other attractions.

We will be focusing on childrens entertainment.

for more information please contact Tony Mould

e-mail cllrmould.npc@gmail.com or call on

07590464700



The Great British Spring Clean

Join the Great British Spring Clean 2024 in Newington on Saturday 27th April,
meeting in the Village Hall car park at 9.30. Bags and litter picking tools
provided, bring your own gloves.



The Great British Spring Clean is the nation's biggest mass-action environmental campaign.

Fly Tipping

There has been a significant increase in fly tipping on the rural roads around
Newington. Reporting this will encourage more enforcement to be action taken
by the Environmental Response Team of SBC. Report to

<https://swale.gov.uk/bins-littering-and-the-environment/littering/report-littering>



Parking

Parking on double yellow lines at the top of Station Road remains an issue.

Residents should take photos, IF SAFE TO DO SO, and report each occurrence
of illegal parking to:- parkingcomplaints@midkent.gov.uk .



Swale Foodbank

There are 4 centres – each centre runs at a different time and a different location.

Mondays: Net Church, East Street, ME10 4BL. Open 12.30pm-2.30pm

Tuesdays: Holy Trinity Parish Hall, Church Street, Sittingbourne ME10 3EG. Open 12pm-2pm

Thursdays: Richmond Academy, Unity Street, Sheerness ME12 2ET. Open 4pm-6pm

Fridays: Sittingbourne Baptist Church, High Street, ME10 4AQ. Open 10.30am-12.30pm



Are you looking for funding?

Are you part of a voluntary group or club? Are you based in or associated with Newington?

If the answer to ALL the above questions is yes then contact

The Newington Parish (Wickham) Charity

c/o Graham Dudley on 01795 842711 or Email nwt@delucy.plus.com

Is your child 2 or 3 years old?

The Cherries Nursery is now part of Newington CEP School

Places are filling up quickly but we still have a few sessions available.

If you are looking for a funded nursery place for your 2 or 3 year old in the next 12 months
please contact Jo or Rachel on 01795 842300 option 3 or email nursery@newington.kent.sch.uk
to register your interest or request a visit to see our recently refurbished space.

For further information please visit the Cherry Class Nursery page on www.newington.kent.sch.uk.

We look forward to hearing from you!

Vacancy for Parish Councillor

Would you like to assist in making decisions that affect your community? you can apply to become a Parish Councillor. expressions of interest must be received in writing to the Clerk by 25th March. To find out what's involved and for any other information please contact: The Clerk, Mrs Wendy Licence, 14 Trapfield Close, Bearsted, ME14 4HT or email: clerk.npc@gmail.com



Parish Council meetings

The Amenities Committee will meet on Tuesday 19th March at 7.00pm in the Pavilion on the Recreation Ground. The Parish Council monthly Meeting is on Tuesday 26th March at 7.00pm in the Village Hall. Members of the public are welcome to attend and ask questions during our ten minute agenda slot. For details on how to attend please contact: The Clerk, Mrs Wendy Licence, email: clerk.npc@gmail.com



Village Voice

Online

April 2024

June 2024

July 2024

Paper delivery

May 2024

August 2024

November 2024

Delivery help need for the Village Voice

We need help delivering the printed version of the Village Voice every three months. The village is divided up into small runs. If you can help please contact Tony Mould 07590464700 tonymould1@sky.com

To view the Village Voice on line go to: www.newington-pc.gov.uk

Parish Council Website

www.newington-pc.gov.uk

The Parish Council website contains information about the Council and its meetings.

There is a planning tracker which gives up to date information on planning applications in the village.

The site is full of useful information and you can also sign up for email alerts.

Details of village organisations are available and if you would like details of your group to be included please contact the Clerk. Mrs Wendy Licence, 14 Trapfield Close, Bearsted, ME14 4HT or email: clerk.npc@gmail.com

Need a Venue for groups or special occasions

The Parish Room at Newington Pavilion

is an ideal location for group and club meetings as well as children's parties and small social gatherings.

It is available for hire at a preferential rate of £5 per hour for residents and village groups or

£10 per hour for non-resident or commercial hire. For bookings please contact the Clerk,

Wendy Licence 01622 739324 Email: clerk.npc@gmail.com



Twenty is Plenty Bin Stickers

The Parish Council has acquired a number of wheelie bin self adhesive stickers for bins within the 20 zone.

If your bin can be seen by drivers when it is waiting for collection or permanently please contact the Parish Clerk Mrs Wendy Licence, and we will get one delivered email: clerk.npc@gmail.com



Newington Concert Party

Newington Concert Party is looking for new members to join them on Tuesday evenings meeting at 7.30

The Concert Party puts on a show every July at the Village Hall
Please contact Derek Friday 01795 873056 for more details

Mark your property to deter burglars

Property Marking

A determined burglar can be difficult to discourage. Good-quality doors, windows and locks are excellent deterrents, but there's even more you can do to stop burglars in their tracks.



Mark it

Make your valuables less attractive to thieves by using a property or police approved forensic marking solution only visible under Ultraviolet (UV) light. This can take the form of a special marker using ink or paint. Mark or etch your property with your postcode, house or flat number or the first three letters of your address. All of these measures help police identify stolen goods, making it harder for thieves to sell. So make your mark.

And property marking isn't only for things like electrical items and bikes, you can also mark high value belongings like antiques. However, we recommend that you seek specialist advice.

Register your property for free on www.immobilise.com – it helps the police identify the owners of recovered property. You can register anything that as a serial number with Immobilise.

Record it

Register your valuables using an accredited property database.



Take photographs and keep documents like receipts related to your property so you can prove ownership.

Register your bike

If you value your bike, then register it with www.bikeregister.com. The prominent stamp acts as a great deterrent.

Flag it it

If you value it, then mark it as protected. Window stickers and signage are extremely effective and are proven to be a powerful deterrent against burglary.

If you would like a property marking kit please pop into Sittingbourne Police Station front counter where we will provide you one.

Newington Community Speedwatch

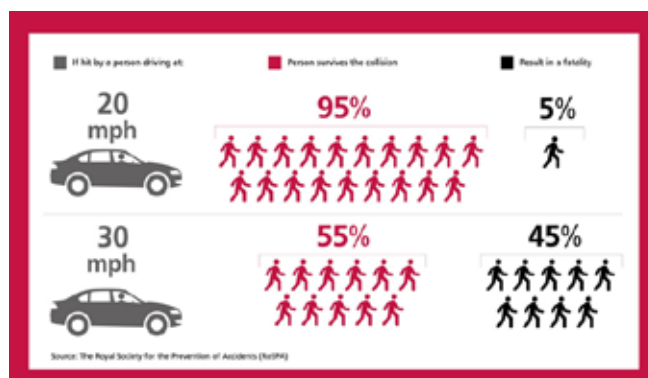
The Newington Speedwatch scheme aims to increase speed awareness.

Speed kills in built up areas or where there are vulnerable pedestrians who use the roads (children, elderly etc.).

Emergency Service vehicles often pass through on emergency calls however these are at a safe speed often cars are recorded at speeds, far in excess of emergency vehicles.

The fastest recorded speeding vehicle through Newington High Street was 50 mph.

The image below highlights the fatal consequences of speed.



We need more people to help.

Please contact Richard Palmer via email RichardPalmer@swale.gov.uk or mobile 07702 674721

More information at <https://www.kent.police.uk/speedwatch>

Deadline for articles 20th of each month, please contact Tony Mould e-mail cllrmould.npc@gmail.com

Citizens Advice Swale

We're delighted to announce that our Sheppey drop-in session is now up and running, in addition to Sittingbourne and Faversham.

Call in without an appointment at one of the following times:

Mondays, 10am-12pm - Swale House, Sittingbourne

Tuesdays, 10am-12pm - Sheppey Gateway, Sheerness

Wednesdays and Fridays, 10am-12pm - 43 Stone Street, Faversham



Our services are subject to adviser availability. Please follow us on social media (Facebook and Twitter)

In addition to our face-to-face services you can still contact us on the phone and online (see below).

How can we help you?

General Advice: Call Adviceline on 0808 278 7979, send an online request at <https://citizensadvice-swale.uk/email-general-advice/> (Monday-Wednesday) or come to a drop-in session.

Debt: Request a call back at <https://citizensadviceswale.uk/debt/>

We offer free, confidential and impartial advice to people living or working in and around Faversham, Sheppey and Sittingbourne. In addition to general advice we offer specialist advice services including debt and benefits. We're an independent charity and we rely on donations and grants to make a difference to people in our community.

Allotment Gardening for the Residents of Newington

Newington (Sittingbourne) Allotment Association

The Newington Allotments are situated off of Orchard Drive, behind the Recreation Ground.

For availability and enquires please contact the Secretary on 01795 844094



Restoration Fund Monthly Draw for February 2024

The February 2024 Restoration Fund Draw took place at Cornerstone in St Marys Church on the 15th February with the prize winners shown below. Congratulations to the lucky winners.

| Prize | Value | Ticket | Name |
|-------|-------|--------|---------------|
| 1st | £25 | 60 | Sally Woolley |
| 2nd | £20 | 148 | Mrs D Gadd |
| 3rd | £18 | 85 | Alan Johnson |
| 4th | £15 | 94 | Derek Blease |
| 6th | £10 | 136 | Gareth Davies |



Prizes will be winging their way to the new winners within the next few days. In the meantime, if anyone is interested in joining our Monthly Draw, I will be pleased to hear from you by phone or email as follows: Tel: 01795 842478 or Email David Lane on laneatborden@btinternet.com.

Thank you everyone and kind regards. David Lane Acting Restoration Fund Organiser

Roman Road Runners

They run Tuesday 6.30pm (meeting at car wash) and Thursday 7pm (meeting at the rec entrance).

They also walk Wednesdays 6.30pm.

It's a free, social running group. Nobody gets left behind.

Contact- Steve Wolfe on 07976673366

How to Report

To REPORT minor offences. (Stolen Car, Property Damage, Drug Use or Dealing)
Call 101, Live Chat, www.kent.police.uk/report



To REPORT Dog Fouling, Abandoned Vehicles, Fly Tipping, Vandalism
Use the Country Eye App (Apple & Android)



To REPORT anything regarding the Railway www.btp.police.uk

To CONTACT your local councillor or MP Find them: www.writetothem.com

To REPORT to KCC online at: www.kent.gov.uk/roads-and-travel/report-a-problem.

To REPORT issues with village lighting
Parish Clerk Wendy Licence e-mail: clerk.npc@gmail.com Tel: 01622 739324

To REPORT Power Cuts – Call 105

Many people don't know they should contact their local electricity network operator if they have a power cut.

Village Bowls

Newington Short Mat Indoor Bowls Club is currently welcoming new members. We meet at Newington Village Hall for two hour sessions starting at 2pm on Mondays and 7pm on Wednesdays. Tuition and club bowls are provided for beginners. Just turn up or phone Kate on 07759 626354 for further information.



Reporting Antisocial Behaviour

Does it feel like the situation could get heated or violent very soon? Is someone in immediate danger? Do you need support right away? If so, please call 999 now. Antisocial behaviour can have a lasting impact on neighbourhoods and communities as it often leads to an increase in crime, particularly violence and criminal damage. If you've witnessed antisocial behaviour of any kind, Call 101: for ASB, including drug dealing (if drug dealing is happening outside of a school or playground, call 999) Call 999 only in an emergency, if there is a crime occurring, someone is injured, being threatened or threat to life.

Help Available:

For updates from Government and local services see the Parish Council website

www.newington-pc.gov.uk

111 NHS or 111.nhs.uk/ (111.nhs.uk/covid-19)

101 for Police non-emergency or www.kent.police.uk

PC Jez Chittim E-mail: 13369@kent.police.uk

My Community Voice

My Community Voice is a messaging service that helps Kent and Medway residents, businesses, and community groups to keep in touch with their local policing teams. The service sends updates about your local area directly from the police officers themselves. My Community Voice is more than just a messaging service; it allows you to reply to the alerts we send you, share information and tell us about the issues affecting you.



We are committed to engaging with communities to increase trust and confidence and to help protect people from harm. Police, partners and the public working together can build resilient and safe communities, and both reduce and prevent crime. You will be able to play an active part in police appeals as well as keeping updated in what is happening in your local area. www.mycommunityvoicekent.co.uk

Keep in the Loop The Council wants to keep villagers in the loop via e-mail. To register your e-mail address and be added to our database.
e-mail the Parish Clerk clerk.npc@gmail.com



Find out more www.MyCommunityVoiceKent.co.uk



PC 13369 Jez Chittim
E-mail: 13369@kent.police.uk

Newington, Hartlip and Upchurch

Other numbers

Report on line – www.kent.police.uk/services/report-online/

Crimestoppers – Call 0800 555 111

Call your local Police 101 – in an emergency always call 999

Cold Calling

A cold caller attempted to charge a vulnerable resident £200 to remove fridge and other rubbish from her front garden. He fly tipped these items in neighbouring areas. He then escorted her to the post office to withdraw the money. Fortunately, the lady at the post office suspected what his intentions were and refused to let resident withdraw the money. He then quickly went away – Be aware of Cold Callers.

There has been a number of reports of Cold Calling in the village. Newington is a no call calling area. Three years ago window stickers were distributed to every house in the village.

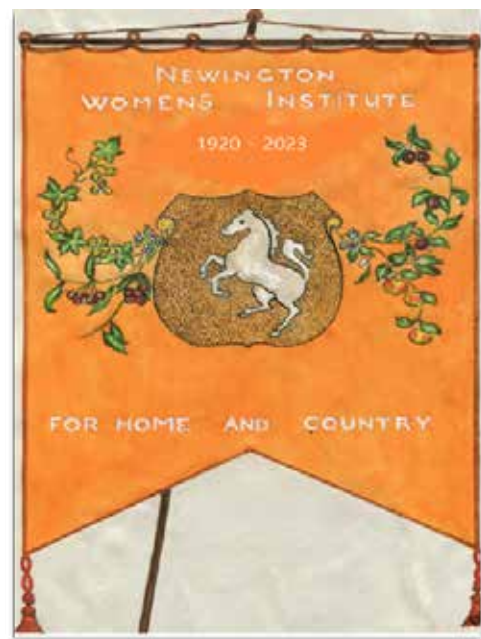
The Parish Council still has them available. If you haven't got a sticker or require a replacement you can collect one from the village pharmacy



We have a varied monthly programme which may include guest speakers, or craft activities, quizzes, competitions and a chance to natter to your new friends, over tea or coffee and cake or biscuits.

We meet 11 times a year in Newington Village Hall ME9 7JJ
(just off the high street in the car park behind the car wash)
On the 3rd Thursday of the month 7pm -10pm (7.30 pm start)
(except for a holiday in August and in December when it is the 2nd Thursday for a Christmas meal.)

Yearly subscription required.



Reg.charity no. 22839

COME AND JOIN US

Rogue Traders/Bogus Tradesmen

Bogus tradesmen, door-to-door sales or doorstep fraud involves fraudsters trying to scam you after knocking at your door.

Legitimate doorstep selling involves someone selling you goods or services in your home or on your doorstep. Many honest businesses use this technique – but so do fraudsters.

Buying on your doorstep can be convenient. However, a salesman who uses clever tactics can pressurise you into buying something you actually don't want or something that's poor value for money.

Door-to-door frauds can take many forms, including:

- pressure selling
- unfair contracts
- overpriced or substandard home maintenance or improvements
- phoney consumer surveys
- bogus charity collections.



Such frauds involve promoting goods or services that are either never delivered to you or are of a very poor quality. Fraudsters may also bill you for work that you didn't agree to. There are specific laws about door-to-door sales. Many are required to give you a 'cooling-off' period (where you can change your mind or request your money back). Bogus tradesmen will offer none of these, and even if they do, you can be sure their 'guarantee' will not be honoured.

Bogus salespeople will provide false identity or contact information, making it impossible for you to identify or contact them. If you've paid them in advance, you won't get your money back.

Even if your bank or insurance policy covers any loss, you'll still have to contend with a damaged credit rating, continued correspondence over a prolonged period to repair the damage, and the emotional distress and anxiety identity theft can cause.

Also, be wary of opening your door to a potential burglar or someone who wants to get inside your property to enable other people to break in. Once they get through your door, fraudulent salespeople can take note of your valuables and any security measures you have in place.

The victims

Victims are often vulnerable, elderly and/or isolated people who know nothing of these scams and so are trusting of anyone who is friendly or seems knowledgeable and genuine. After they have become a victim, they often feel ashamed and/or scared and so don't tell anyone. This not only means the original scam goes unreported but it also makes it easy for the rogue trader to return for more. The stress of the victim's shame or fear may also go on to cause physical or mental health problems. And even if the traders are reported they are often untraceable as they will have given the victim false contact details or none at all.

Are you a victim of bogus tradesmen fraud?

- You've bought faulty, overpriced or substandard goods or services from someone knocking at your door.
- You've paid for these goods or services by credit or debit card.

What should you do if you've been a victim of bogus tradesmen fraud?

- Report it to Action Fraud.
- You can report the salesperson to the Citizens Advice on 0808 223 1133. or to the National Trading Standards if you believe they have sold you faulty, inferior or overpriced products or services.

Similarly, you can seek advice from Citizens Advice about the terms and conditions of any agreement or contract you may have signed.

- If you've made the payment by credit/debit card or by cheque, contact your credit card company and/or bank and advise them that you're a victim of improper door-to-door sales techniques and your identity or financial details may have been compromised. They'll advise you on cancelling payments and ensuring your finances remain secure.

Newington History Group

The story of the Medway Queen Paddle Steamer at the start of its centenary year will be featured at Newington History Group's monthly meeting on Thursday, March 28 (7pm) in Newington Village Hall, High Street, ME9 7JJ.

Mark Bathurst, of the Medway Queen Preservation Society, will detail the history and restoration of this rare and remarkable vessel that was launched on April 23, 1924, and took part in the Dunkirk evacuation during World War Two.



NHG meets on the 4th Thursday and everyone is welcome, £4 at door, inc. refreshments and free parking.

Support Newington's heritage by taking out membership of the group for a mere £1.50 a month. Annual membership runs from June 1 and costs £18 for the 12 months.

If you're a young person with an interest in your community's heritage, ask about the group's free membership for under-18s and the special young member concession for 18–25-year-olds.

The group is here to research, promote and help protect the history and heritage of the village and neighbouring areas. It liaises with heritage and archaeological experts in recording the village for the future.

For more details contact newingtonhistorygroup@outlook.com; through its website: newingtonhistory.uk; or call: 07506 239970. Follow on Facebook: Newington History Group, and X: @newingtonhg.

Take a photo for the Newington Calender 2025

Have one of your photographs hanging on the wall of hundreds of Newington homes next year.

A limited-edition calendar is being produced by Newington History Group to celebrate the village, its people and the surrounding countryside.

And we're looking for pictures to appear in it. Send as many photographs as you want, ideally they will reflect a particular month or season. They may be in colour or black and white.

The selected pictures will be chosen by NHG, and the photographers fully credited on the calendar.

Please email your photographs to: newingtonhistorygroup@outlook.com.

Include your name, address, email and phone number along with the picture details (title, location and date taken).

The deadline for submissions is Wednesday, July 31.

Anyone who is identifiable in a photograph must give their written permission to the photographer and, thereby, to NHG, for their image being freely reproduced in the NHG calendar if it's selected.

A parent or guardian must give written consent in the case of a minor being photographed and identifiable.

If you'd like to reserve copies of the calendar, please email the history group. Prices will be available shortly.

Make a date with Newington History Group.

Medway Arts Society

The Art Society of Medway meets on the 3rd Tuesday of every month for lectures on a wide variety of Arts subjects. Also day visits to places of interest.

New members & visitors welcome

Meeting starts at 11am at, Franklin Rooms

Franklin Road, Gillingham,

ME7 4DG info@theartsocietymedway.org.uk

COMMUNITY PAGE

Library Home Delivery Service

Kent Library Service can deliver library items to you if you cannot visit a library due to illness, disability or your caring responsibilities.

After visiting you to discuss your tastes and needs, staff will select suitable material for you. A volunteer will deliver your books, DVDs or other items and collect ones you are finished with.

Please contact KCC Libraries 03000 413131.



Table Tennis at Newington Village Hall

Sturdee and Newington Table Tennis Club would like to invite players to attend on Mondays nights during the summer months of May, June and July. Juniors and Seniors, beginners and ex players are all welcome. Sessions from 7–30pm to 9–30pm, £2.00 for Juniors and £3.00 for Seniors. Casual or competitive play, coaching is available if required. Please contact Ted Tydeman on 01795 431473 or email: ted.anita@btinternet.com for more details

Newington Pharmacy

44 Newington High Street 01795 844131

Opening Hours

Monday to Friday 9am–6pm Saturday 9am–1pm
Sunday closed

Newington Bingo Club

Meets on the first Thursday, 2.00-4.00 pm
each month (except January)
in the Newington Room, Village Hall.

Game cards: £4.00 for five games.
(Tea and biscuits included).

Raffle: £1.00 a strip. Members who want to enter the raffle need to bring with them each month a raffle prize (one item that they would be happy to win!).

Cherry Class Nursery

Where learning is fun!, Limited spaces available

Free Government funding
for 3 & 4 year olds & eligible 2yr olds

Email: nursery@newington.kent.sch.uk
Newington School, School Lane
Newington, ME9 7LB Phone: 01795 841131

The Cornerstone Cafe

The Third Thursday in Every Month
From 9am to 12.30

in the Church St Mary the Virgin,
Newington – Play area for children – All welcome

Newington Reading Group

Meets at the Church on the last Wednesday of every month except December at 12 noon.

Please call Mairi on 01795 843 172 for more information or to say you intend to come.
(Especially if you wish to stay for lunch)

Newington Village Hall

Booking Secretary Mrs Kristin Julier

For bookings and enquiries M: 07985 711257 H: 01795 843262

e-mail kcljulier@googlemail.com

Registered Charity No 10202925

Neweton Scout Group

Beavers, cubs and scouts meet Thursdays and Fridays
at Newington's Scout Hut.

Explorers 14 to 18 years Tuesdays 7.45 – 9.30pm.

For more information call:

01795 475114 – 07716 045209

Newington W.I.

Meets every 3rd Thursday of the month at 7.30 pm in the
Main Hall at Newington Village Hall.

Contact: Alison Fagg 01795 843150

Come and Play Short Mat Bowls

At Newington Village Hall

Mondays 2pm – 4.30pm and Wednesdays 7– 9.30pm

for more information contact Cleone Curtis (Sec.)

Tel: 01795 485265 Email: bowls.cle@gmail.com

St. Mary's Art Group

First Friday and third Friday mornings
between 10.00 and 12.00am every month at the Church

Newington Methodist Hall

For Hire £10 per hour

Contact Robert Zachar Tel: 07504 840781

newingtonmethodistchurch@hotmail.co.uk

Rambling

A group of ramblers meet every Wednesday at 10am
outside Newington Surgery

Your community information HERE

Contact: Tony Mould 07590464700 email: cllrmould.npc@gmail.com

VILLAGE GROUPS AND ORGANISATIONS

Newington Village Hall

Contact: Mrs Kristin Julier
07985 711257

Allotment Association

Cherrill Matthews, Secretary
john.matthews57@yahoo.com
01795 844094

Bingo Group

Irene Layer
01795 844491

The Cherries Pre-school

The Manager
www.newington.kent.sch.uk
01795 841131

Friends of Newington Recreation Ground

Judy Haynes
friendsofnewingtonrec@gmail.com

Friends of St Mary's

Pete Jones
petethevan@hotmail.com
01795 843268

Newington Concert Party

Derek Friday
fridayderek@outlook.com
01795873056 07985656486

Newington WI

Chris Kerr
chris.kerr@hotmail.co.uk

Newington Floral Art Group

Alison Fagg, secretary
alisonfagg46@gmail.com
01795 843150

Newington History Group

Sue Flipping
newingtonhistorygroup@outlook.com
07506 239970

Newington C of E School

Mr S Krafft, Head of School
office@newington.kent.sch.uk
01795 842300

The Short Mat Bowls Club

Kate Beeby
07759 626 354

St Marys Art Group

Georgina Springall
newingtonwarden@hotmail.com
01634 386807

St Mary the Virgin Church

Rev Julian Staniforth Priest
julian.staniforth@gmail.com
01795 227329

St Mary the Virgin Church

Rev Amanda Lane Associate Priest
laneatborden@btinternet.com
01795 842478

St Mary the Virgin Parochial Church Council

Mrs C Stevens Secretary

St Mary's Bellringers

David Lane
laneatborden@btinternet.com
01795 842478

Walking Group

Meets every Wednesday 10am
Outside Doctor's Newington High street

The Wickham Trust

Graham Dudley (Clerk)
nwt@delucy.plus.com
01795 842711
Mob 07790625501

Ist Neweton Scout Group –Stephen Coulter
(Group Scout Leader) Tel: 01795 475114)

Newington Methodist Chapel

newingtonmethodistchurch@hotmail.co.uk
or Peter Rye; pjrye@btinternet.com
Tel. 01795 843006

Newington Charities

Mr David Parker (Sec)
Tel: 01795 842143
Email: david.parker.n31@gmail.com

NEWINGTON PARISH COUNCIL

Parish Council

Newington Parish Council Wendy Licence – Parish Clerk 14 Trapfield Close, Bearsted,
Maidstone, Kent. ME14 4HT, Tel: 01622 739324 Email: clerk.npc@gmail.com

Chairman

Cllr Richard Palmer

Planning Committee (Vice Chairman)
Finance Working Party (Vice Chairman)
HR Working Party (Vice Chairman)
Parish Highways Improvement Plan
Grants and external funding
Village Hall Representative
KALC Swale Area Committee Rep.
Air Quality Monitoring Group
Friends of Newington Recreation Ground Rep.
Defibrillator

Vice Chairman

Cllr Tony Mould

Amenities Committee
Planning Committee
Finance Working Party
HR Working Party
Cemetery Advisory Group
Parish Highways Improvement Plan
School Governor
Air Quality Monitoring Group
Friends of Newington Recreation Ground Rep.

Swale Borough Councillors **Chris Palmer** Tel: 07939992295 Email: chrispalmer@swale.gov.uk

Richard Palmer Tel: 07702 674721 Email: richardpalmer@swale.gov.uk

Kent County Councillor **Mike Baldock** Tel: 03000411009 01795 471139 Email: mike.baldock@kent.gov.uk

Member of Parliament **Gordon Henderson** Tel: Work: 020 7219 7144. Constituency phone no 01795 423199
Email: gordon.henderson.mp@parliament.uk

Cllr Ruth Brown

Amenities Committee
Planning Committee
Cllr Stephen Harvey
Planning Committee (Chairman)
Amenities Committee
KALC Swale Area Committee Rep.
Parish Highways Improvement Plan
Roads and pavements
Air Quality Monitoring Group
Friends of Newington Recreation Ground Rep.

Cllr Elaine Jackson

Amenities Committee (Chair)
Planning Committee
HR Working Party (Chair)
Finance Working Party
Roads and Pavements

Cllr Eric Layer

Amenities Committee (Vice Chairman)
Planning Committee
HR Working Party
Cemetery Advisory Group (Chairman)
Parish Highways Improvement Plan
Roads and pavements
Air Quality Monitoring Group
Allotments Representative
Friends of Newington Recreation Ground Rep.

Cllr Michael Barlow

Amenities Committee
Planning Committee

Cllr Chris Palmer

Amenities Committee
Planning Committee
HR Working Party

Cllr Ray Cuffley

Planning Committee



We are local church communities seeking to serve the village.
We invite you to come and join with us when we gather.



St Mary's Church Newington

Normal Pattern of Services with Refreshments

1st Sunday – Morning Worship 10am

2nd Sunday – Communion 10am

3rd Sunday – Stepping Stones for families & children 3pm

4th Sunday – Joint Communion with Methodists 9.30am

At the Methodist Church

Benefice Service – Sunday 3rd March
at Upchurch Village Hall 10.30am
(no service in Newington)

Cornerstone Café

3rd Thursday of each month 9.00am – 12.00pm

A place of welcome to meet friends for a chat
with homemade cakes & coffee.

Breathing Space

St Mary's is open every day 8.00am – 4.00pm
Come and find space for quiet reflection & prayer

Contact: Rev. Julian Staniforth

t: 01795 227 329 e: julian.staniforth@gmail.com

Newington Methodist Church

All Sunday services at 9.30am followed by refreshments

Coffee Morning

every 1st Saturday of month 10am – 12pm.

Rev. Robert Zachar

e: robert.zachar@gmail.com

Food Bank

St Mary's supports Sittingbourne Foodbank which plays a crucial role in helping the most vulnerable in our communities. If you are able to make donations of non-perishable items or essential household products, (in date) such donations can be left in the church which is now open every day.

If you are aware of anyone in need,
please contact Rev Julian who can issue a voucher.



Memory Café

A relaxed, informal and free drop-in
providing support for people with memory
difficulties and their carers.

We provide:

- Companionship
- Refreshments
- Information & Advice
- Occasional speakers
- Fun activities



Newington Village Hall

4th Monday of every month

11am-1pm

For info call: 01795 532766

Registered Charity No. 1152234



New year, new Challenge?

Volunteer befrienders needed in your local community!

Our wonderful team of volunteer befrienders already make a huge difference in the lives of the local people they visit.

Each week a befriender and their “friend” might enjoy a chat and a cuppa together or perhaps play a game, do puzzles, swap stories and hopefully enjoy some laughs. This should be an hour a week for both parties to look forward to. Befrienders are also a valuable set of eyes and ears to spot potential problems and can work in conjunction with the organisation to sign-post service users when required.

Our befrienders are not allowed to become involved in personal care, domestic tasks, administering medication, financial/legal matters or offer formal advice.

- ☐ Are you 18 or over with about **an hour a week** to spare to bring a smile to someone and reduce loneliness?
- ☐ Are you kind, patient and compassionate with an ability to empathise and engage with individuals regardless of cultural or social background?
- ☐ Could make a difference to someone by bringing the outside world in and brightening their day?
- ☐ Do you have an ability to work with older individuals with a friendly and enthusiastic approach?

If the above applies to you and you would like to apply or find out more, please get in touch with our **Befriending Coordinator** via email nikki.holt@ageukfs.org.uk or by phone on **01795 532766**

A DBS check and references will be required along with mandatory training.



Kent Fraud Alert System



Bank Impersonation Scam

We have had a report from a Kent resident being targeted by criminals impersonating their Bank. They telephoned stating that they were calling regarding 2 large payments that had been paid from their account. The victim confirmed that they had not made the payments at which point they were told by the criminals that they would cancel their card but for them to be able to send a new card, they would need to send their old card to an address that they supplied. It was a SCAM.

If you get a call like this and are unsure, then STOP. Get their details and then call 159 for your Banks Fraud Department or 101 for the Police but using a different telephone to the one that you were originally called on. If you do not have a different telephone to hand, then wait 5 minutes and ring a family member or friend to ensure the line has been disconnected.

If you think that you may have been a victim of this or any other type of scam, then contact your Bank immediately, which you can do by calling 159 and report it to Action Fraud at www.actionfraud.police.uk or call 0300 123 2040.



Preventing fraud

Together,
let's stop
scammers.



Remember, ABC:



never Assume



never Believe



always Confirm

Get the latest
scam advice:



@KentPoliceECU



**Kent
Police**

Contacting Kent Police

Report a non-urgent crime online www.kent.police.uk/report

Talk to us on LiveChat – available 24/7 www.kent.police.uk/contact

In an emergency, if crime is in progress or life is in danger call **999**

If deaf or speech impaired, text 'police' and your message to **60066**

www.kent.police.uk   

Kent Fraud Alert System



TO STOP FRAUD™

Fake email offering a free electric toothbrush

10,000 reports across the UK and counting. Watch out for fake emails promising free Oral-B electric toothbrushes.

The email asks you to click on a link and complete a survey, but it is all a scam to steal your personal and financial data.

If you get an email like this, then please forward to report@phishing.gov.uk

If you think that you may have been a victim of this or any other type of scam, then contact your Bank immediately, which you can do by calling 159 and report it to Action Fraud at www.actionfraud.police.uk or call 0300 123 2040.

Preventing fraud

Together,
let's stop
scammers.



Remember, ABC:



never Assume



never Believe



always Confirm

Get the latest
scam advice:



@KentPoliceECU

SCAM WARNING

Electric toothbrush scam emails reported 10,000 times

Action Fraud has received 9,981 reports relating to fake emails purporting to giveaway a free Oral-B IO Series 9 Electric Toothbrush. The emails usually impersonate well-known retailers, such as Boots, and claim that the recipient will receive their free toothbrush if they simply follow the links in the email and complete a feedback form. The links in the emails lead to malicious websites designed to steal personal and financial information.

- If you have any doubts about a message, contact the organisation directly. **Don't** use the numbers or address in the message - use the details from their official website. Your bank (or any other official source) will never ask you to supply personal information via email.
- **Spotted a suspicious email?** Forward it to the Suspicious Email Reporting Service (SERS) - report@phishing.gov.uk

Kent Police Action Fraud Cyber Aware



**Kent
Police**

Contacting Kent Police

Report a non-urgent crime online www.kent.police.uk/report

Talk to us on LiveChat – available 24/7 www.kent.police.uk/contact

In an emergency, if crime is in progress or life is in danger call **999**

If deaf or speech impaired, text 'police' and your message to **60066**

www.kent.police.uk



Kent Fraud Alert System



TO STOP FRAUD™

Bank Impersonation/Courier Fraud

We have received reports where victims are being targeted by criminals impersonating their Bank. They will state they are from their Banks Fraud Department and that they are passing them through to the "Fraud Squad" as their Bank account is being used for Fraud. They will ask them to withdraw cash as part of an investigation and to post the money to an address that the criminals supply. The Scam appears all very plausible and is designed to panic the victims into complying with the criminals wishes.

Your Bank or Police will never call like this and ask you to withdraw cash to be posted to an address or to be collected by a courier.

If you get a call like this and are unsure, then STOP. Get their details and then call 159 for your Banks Fraud Department or 101 for the Police but using a different telephone to the one that you were originally called on. If you do not have a different telephone to hand, then wait 5 minutes and ring a family member or friend to ensure the line has been disconnected.

If you think that you may have been a victim of this or any other type of scam, then contact your Bank immediately, which you can do by calling 159 and report it to Action Fraud at www.actionfraud.police.uk or call 0300 123 2040.

Preventing fraud


Together,
let's stop
scammers.



Remember, ABC:

 never Assume

 never Believe

 always Confirm

Get the latest
scam advice:



@KentPoliceECU



**Kent
Police**

Contacting Kent Police

Report a non-urgent crime online www.kent.police.uk/report

Talk to us on LiveChat – available 24/7 www.kent.police.uk/contact

In an emergency, if crime is in progress or life is in danger call **999**

If deaf or speech impaired, text 'police' and your message to **60066**

www.kent.police.uk



Kent Fraud Alert System



TO STOP FRAUD™

HMRC Scams are on the increase

We have received reports recently of criminals impersonating HMRC and telephoning people stating that they owed money for back tax or a fine and that unless paid immediately they would send the Police to arrest them. They will often tell you to pay this by Bank Transfer or to buy gift cards and to call them with the gift card numbers.

It is a SCAM - HMRC would never call you like this and will never threaten you with arrest.

For more advice check the following HMRC website –
[Identify tax scam phone calls, emails and text messages - GOV.UK \(www.gov.uk\)](https://www.gov.uk/identify-tax-scams)

If you think that you may have been a victim of this or any other type of scam, then contact your Bank immediately, which you can do by calling 159 and report it to Action Fraud at www.actionfraud.police.uk or call 0300 123 2040.



Preventing fraud

Together,
let's stop
scammers.



Remember, ABC:



never Assume



never Believe



always Confirm

Get the latest
scam advice:



@KentPoliceECU



**Kent
Police**

Contacting Kent Police

Report a non-urgent crime online www.kent.police.uk/report

Talk to us on LiveChat – available 24/7 www.kent.police.uk/contact

In an emergency, if crime is in progress or life is in danger call **999**

If deaf or speech impaired, text 'police' and your message to **60066**

www.kent.police.uk



Kent Fraud Alert System



TO STOP FRAUD™

Delivery Scams Happening Now

We have received reports of Kent residents receiving packages addressed to them but found that they contained items that they had not ordered. A short while after the packages were delivered a courier is reported to have re-attended their address to collect the packages, claiming they had been delivered in error and that they will take them back for them.

However, it is a scam. As the criminals have ordered the goods and then arranged delivery to the victim in the victim's name and to the victim's home address, with the criminals then collecting the goods stating that they were delivered by mistake.

The first time the victim knows that there is a problem, is when they are contacted for payment of the goods. Often the items ordered are high value Mobile Phones and Laptops.

If goods are delivered that you have not ordered and are marked with your address, then you should inform the company that sent it and wait for them to send a courier. Always check with them which courier company is making the collection and when they will arrive. If someone knocks on the door claiming to have come to pick it up after it was delivered by mistake, then do not hand the items over.

If you think that you may have been a victim of this or any other type of scam, then contact your Bank immediately, which you can do by calling 159 and report it to Action Fraud at www.actionfraud.police.uk or call 0300 123 2040.

Preventing fraud

Together,
let's stop
scammers.



Remember, ABC:



never Assume



never Believe



always Confirm

Get the latest
scam advice:



@KentPoliceECU



**Kent
Police**

Contacting Kent Police

Report a non-urgent crime online www.kent.police.uk/report

Talk to us on LiveChat – available 24/7 www.kent.police.uk/contact

In an emergency, if crime is in progress or life is in danger call **999**

If deaf or speech impaired, text '**police**' and your message to **60066**

www.kent.police.uk

