

# The Bugle

No 291 1st June 2026

Think small

Contributions to trading.as.wdr@googlemail.com

*"Setting a good example for children takes all the fun out of middle age."*

William Feather



## All change - but slowly

Southern Rail services are now under control of the Department for Transport, and will eventually be run as

Great British Railways. Over the next year, an extra 40 drivers will be recruited for the Southern and Gatwick Express network, to improve train crew availability and reduce cancellations. The full rebranding of carriages is expected to take longer.

Watch out for overnight lane closures and some full diversions as the resurfacing of the A27 west of the Southerham Roundabout continues until 12th June.



## Big up, Bentley

The Bentley Estate, famed as a home for wildfowl, classic cars and weddings, will this year play host to what's been called the UK's biggest reggae festival. "One Love - One Sun" runs from 21st August for three days, just north of Shortgate and Halland. The Bentley Miniature Railway is being renamed Train To Skaville for the weekend.

 Sunday 7th June  
8:30am Holy Communion at Laughton  
10:30am Morning Prayer at Chalvington  
Both led by Revd Steve Osei-Mensah.



## Running around when it's warm

Above scenes from the big stoolball

derby match at The Yew Tree on Thursday. Ripe set a target of 108 for 8, and chased Laughton hard, taking 9 wickets in 14 overs, before Laughton claimed victory. Right, Cameron Ruckley at the Eastbourne end of the South Downs Way, having completed 100 miles in 28 hours over the hot Bank Holiday weekend. Thanks to sponsors, he's raised £3,100+ - double his target - for Kent and Sussex air ambulance funds.



The cafe side of Laughton Village Shop has a new coffee and tea menu, as well as rolls, cakes and pastries.

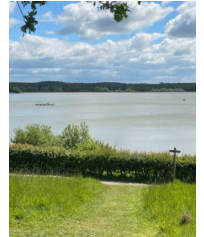


## Back on tap

There was a brief closure on Church Lane, Ripe this week, to reconnect the water supply to the Community field, out of action for two years. The RACCA team have thanked Ripe Church for the use of their supply to support their tree and shrub planting in the interim.

## Supply side news

Arlington Reservoir was 92.2% full this week, compared with 85% this time last year. Meanwhile, the public footpath along the dam has re-opened, bringing back a shorter circular walk. It was closed at the end of March for maintenance and repairs.



## Hoathly houses on hold

Wealden's Planning Committee got into a tangle over plans for nearly 300 new homes and a primary school in East Hoathly, and after two hours of debate, deferred a decision. Planning officers had recommended approval, and were concerned that one councillor had expressed prejudice about a specialist report submitted with the application.



The King's Head in East Hoathly has parted company with the first manager appointed under the pub's new community ownership. The management committee announced this week that it had 'amicably agreed to part ways' with Mark Norman 'with immediate effect'.

## Pete steps in

The UK's expert on maintaining pools of water, Pete the Pond, is at Laughton Greenwood today, Monday 1st June, with his team working on renovation of the main pond from 9am. Volunteer helpers are welcome; wear wellies and come to Keepers Gate, towards the north end of Park Lane.



## Caught on camera

Left: Keith Hopson captured Wednesday night's lunar halo (or "ring around the moon") over Ripe, with moonlight refracting through ice crystals in high cirrus clouds. Below: Roses everywhere, but John Janes has standards at April Cottage, Ripe.

