

Chelford Neighbourhood Plan Young Persons' Questionnaire Report

November 2017



CONTENTS

INTRODUCTION

METHODOLOGY

OVERALL RESPONSE

QUESTIONNAIRE SECTIONS

QUESTION ANALYSIS

APPENDIX A:

CHELFORD YOUNG PERSONS' QUESTIONNAIRE

INTRODUCTION

Chelford Neighbourhood Plan Steering Group commissioned Cheshire Community Action (CCA) to carry out an analysis of the Neighbourhood Plan Young Persons' Questionnaire undertaken in September/ October 2017.

This report presents the results of the questionnaire. The content highlights issues that are important to the local young people of Chelford, and will help inform (along with other evidence) the vision, objectives and the direction of the planning policies in the Chelford Neighbourhood Plan. There are also aspects which cannot be dealt with through the Neighbourhood Plan but may become actions or projects for the Parish Council to address through other means.

CCA is a local, independent charity that has supported over 60 neighbourhood plan groups in Cheshire and is therefore one of the most experienced local organisations in supporting and advising on neighbourhood plans.

METHODOLOGY

The questionnaire shown in Appendix A was delivered to young people in Chelford during the week of 7th-15th September 2017. Respondents could complete the questionnaire whereupon it would be collected by a Neighbourhood Plan volunteer.

The survey required responses from as many local people aged 11-17 as possible and was therefore promoted through a variety of methods. The questionnaire was promoted by the village website <http://chelfordvillage.org> and when the general residents' survey was being delivered, householders were asked if there were any young people living at the property, and if so a questionnaire was left for them to fill in.

The deadline for responses was 12th October 2017 so that individuals had approximately one month to respond. The surveys were collected by members of the Neighbourhood Plan Steering Group to try to ensure as good a return as possible, and so that any queries could be answered. CCA carried out data entry and analysed the responses. Hard copy responses were manually entered into the database using Survey Monkey.

All personal information that has been received as part of the survey was treated as confidential in order to comply with data protection laws.

OVERALL RESPONSE

A total of 10 questionnaires were returned out of the 38 distributed. This gives an overall response rate of 26%.

QUESTIONNAIRE SECTIONS

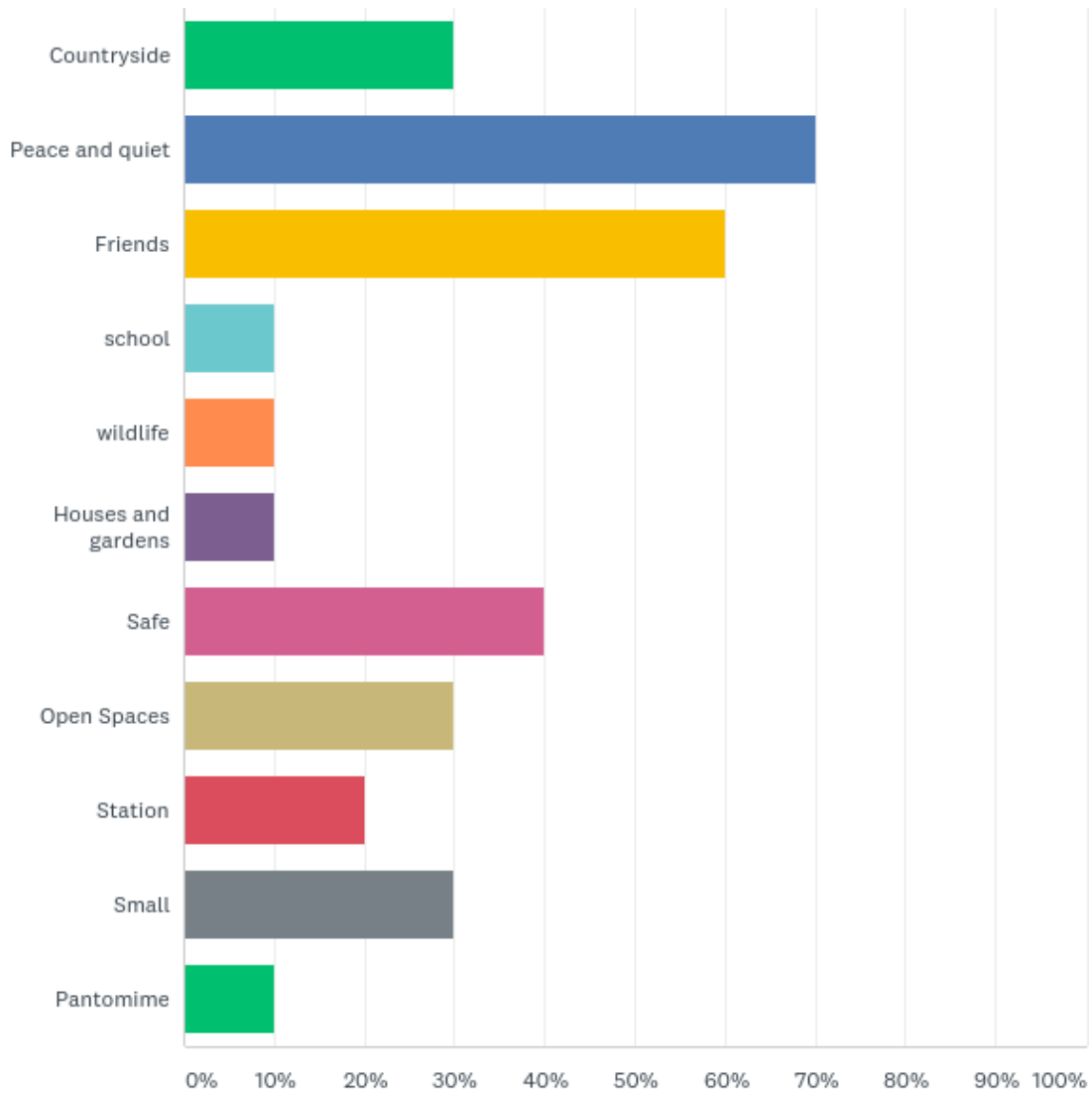
The survey had three questions: What three things do you like about living in Chelford ? What three things do you think might make Chelford a better place to live in? By 2030 please describe what type of place you would like Chelford to be? The questions were all open ended, and so in order for analysis to be undertaken, comments were grouped into certain main themes. In this report, the

results are shown in chart and tabular form. The number of respondents who answered each question are included in the tables.

QUESTION ANALYSIS

Q1: What three things do you like about living in Chelford?

Answered: 10 Skipped: 0

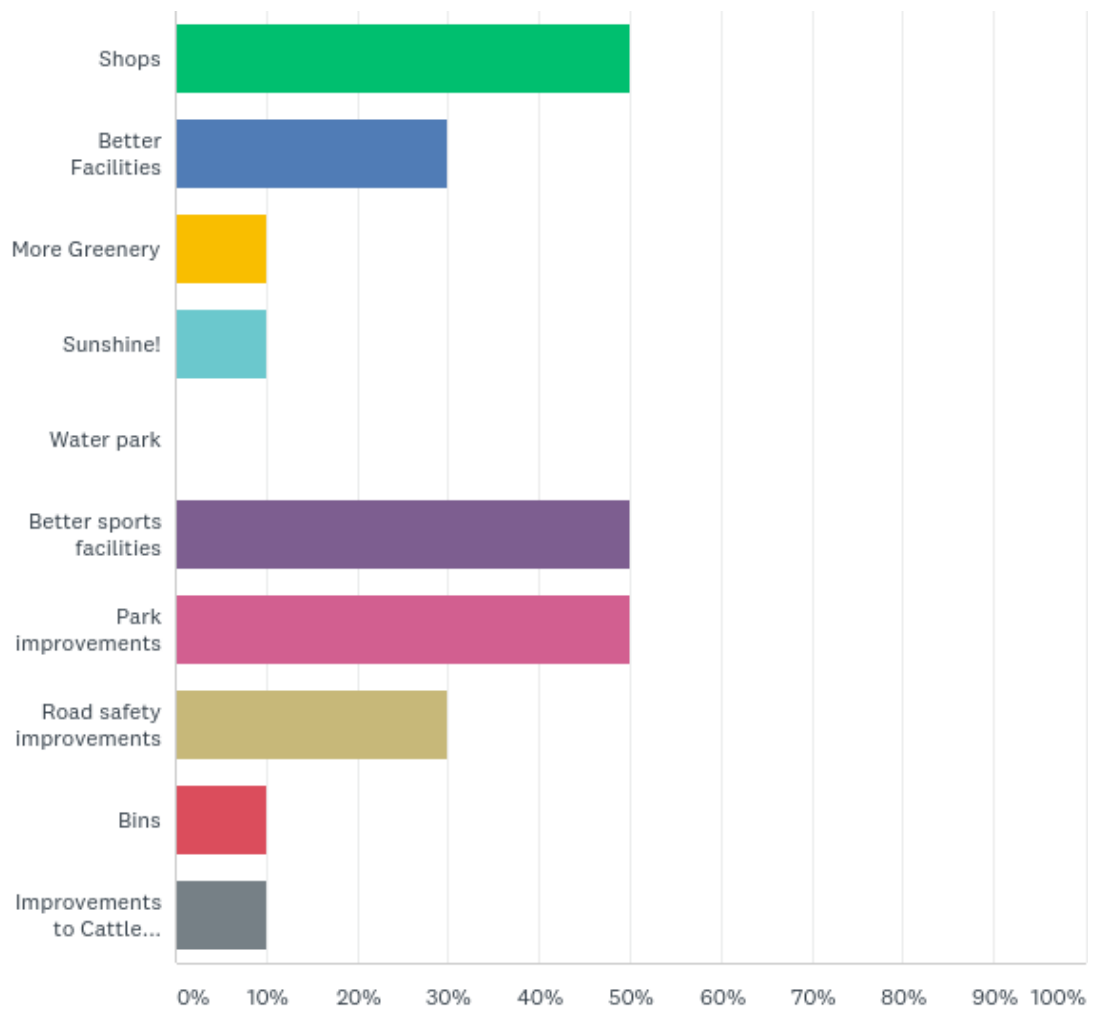


ANSWER CHOICES	RESPONSES	
Countryside	30.00%	3
Peace and quiet	70.00%	7
Friends	60.00%	6
school	10.00%	1
wildlife	10.00%	1
Houses and gardens	10.00%	1
Safe	40.00%	4
Open Spaces	30.00%	3
Station	20.00%	2
Small	30.00%	3
Pantomime	10.00%	1
Total Respondents: 10		

All of the respondents answered this question, with the main thing that the young people liked, perhaps surprisingly, was the peace and quiet of Chelford. The young people liked having their friends nearby, and felt safe. They liked the countryside, open spaces and the small size of the village. Other things mentioned that the respondents liked were school, the houses and gardens, the railway station and the pantomime.

Q2: What three things do you think might make Chelford a better place to live in?

Answered: 10 Skipped: 0

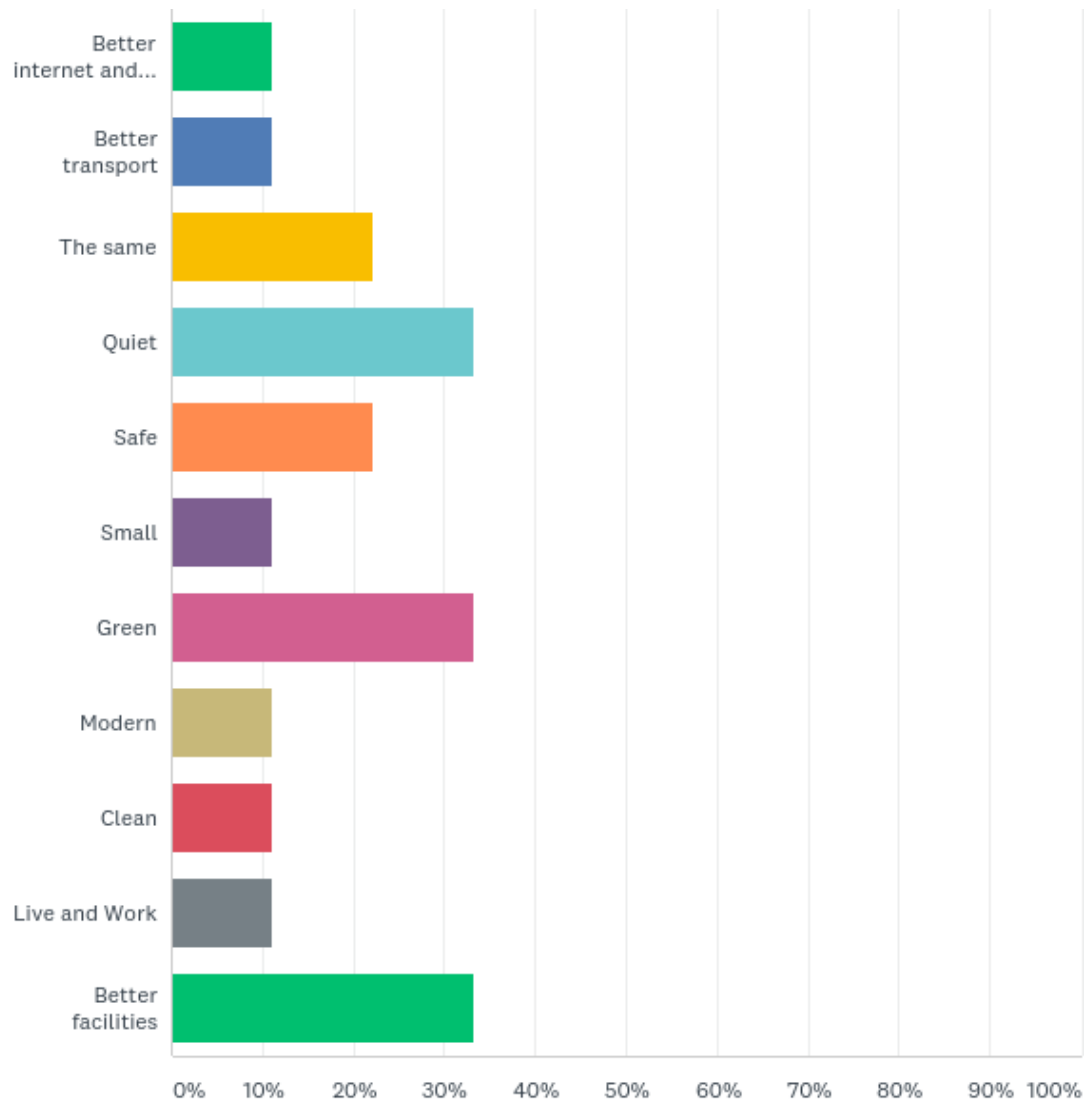


ANSWER CHOICES	RESPONSES	
Shops	50.00%	5
Better Facilities	30.00%	3
More Greenery	10.00%	1
Sunshine!	10.00%	1
Water park	0.00%	0
Better sports facilities	50.00%	5
Park improvements	50.00%	5
Road safety improvements	30.00%	3
Bins	10.00%	1
Improvements to Cattle Market	10.00%	1
Total Respondents: 10		

Again all the young people who responded to the questionnaire answered this question. Half of all respondents didn't like the lack of shops, wanted better sports facilities and improvements to the park. Other answers were that better facilities were needed, along with road safety improvements. Other issues raised were the Cattle Market closing, more bins were thought to be necessary, more greenery wanted, along with better weather and more sunshine!

Q3: By 2030 please describe what type of place you would like Chelford to be.

Answered: 9 Skipped: 1

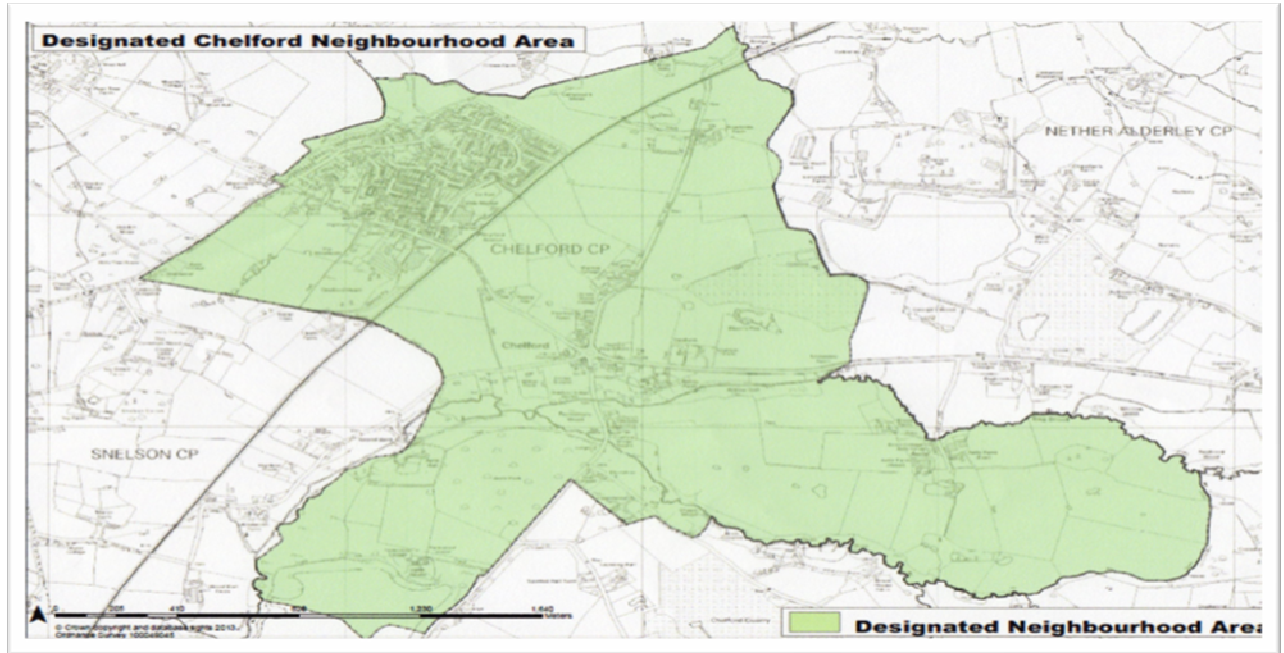


ANSWER CHOICES	RESPONSES	
Better internet and broadband	11.11%	1
Better transport	11.11%	1
The same	22.22%	2
Quiet	33.33%	3
Safe	22.22%	2
Small	11.11%	1
Green	33.33%	3
Modern	11.11%	1
Clean	11.11%	1
Live and Work	11.11%	1
Better facilities	33.33%	3
Total Respondents: 9		

Nine of the ten respondents described what type of place they would like Chelford to be by 2030, including a lovely drawing of a sunny countryside scene complete with a cow and a house! A third of respondents wished Chelford to have better facilities, remain quiet and still be green. Two young people wanted Chelford to be the same as it is now, and two wanted it to still be safe. Other thoughts were for better internet and broadband; better transport; to stay small, be clean and modern and a good place to live and work.

Chelford Neighbourhood Plan

Help Shape the Future of Our Community



What is a Neighbourhood Plan?

- A Neighbourhood Plan is an opportunity for *every resident* in Chelford to have a say in how Chelford Parish should develop up to 2030 to meet local needs. Every resident means just that. It is important that younger residents have an input into the Neighbourhood Plan as well as their parents
- These Plans are important documents. They help to ensure that the area you live in reflects your needs as well as others. Once the Plan is agreed it will give the residents of Chelford an opportunity to influence and shape any future developments up to 2030.
- A Neighbourhood Plan can allocate sites for development and can have a number of policies covering planning issues such as housing, local character and design, the natural environment, community facilities and more.

Why Have We Decided to Produce a Neighbourhood Plan?

- Chelford is about to undergo significant change with two new housing developments, which could increase the population by almost 500 people (+40%) and the housing stock by about 180 dwellings (+36%)

- By completing this simple questionnaire you will enable the Parish Council to influence future developments for the area thanks to the views you have shared with us.
- **All responses will remain anonymous and will be treated as confidential**

YOUNG PERSON QUESTIONNAIRE

We want to know your views on Chelford now and what we should plan for in the future to make Chelford a good place to live and work. Please complete all aspects of the questionnaire.

1. What three things do like about living in Chelford?

i) _____

ii) _____

iii) _____

2. What three things do you think might make Chelford a better place to live in?

i) _____

ii) _____

iii) _____

3. By 2030 please describe what type of place you would like Chelford to be.

Thank you for completing this questionnaire. One of our representatives will call and collect your responses. If you would like to be involved in anyway with developing the Neighbourhood Plan, please contact the Clerk to Chelford Parish Council at:

clerk.chelfordpc@gmail.com Tel: 01477 571 444