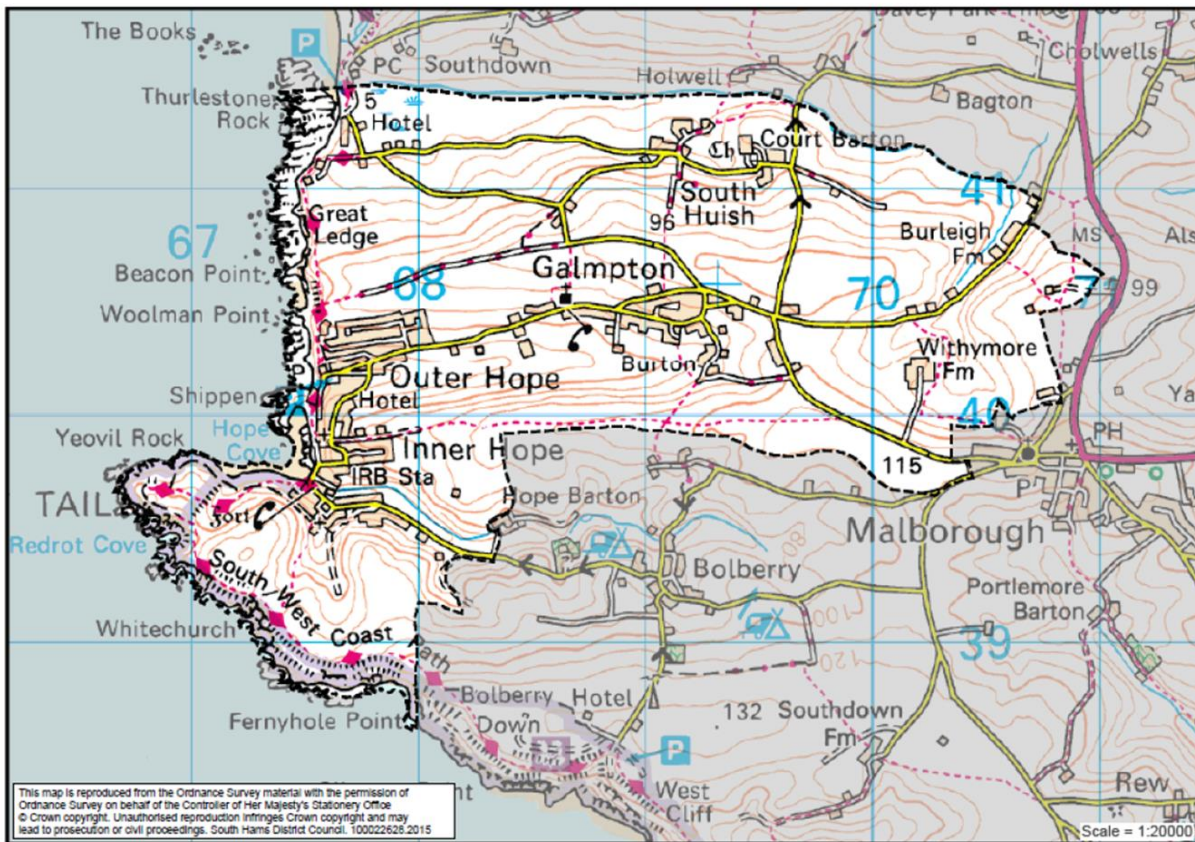


South Huish Neighbourhood Plan Questionnaire

Our chance to influence the future!

South Huish Parish proposed Neighbourhood Plan Area



Introduction

South Huish Neighbourhood Plan (2015-2030 – ‘The PLAN’) will allow the Parish Council to have more influence in the planning decisions of South Hams District Council. The PLAN will provide Parish input into managing development pressures and seek changes so that the environmental, economic and social needs of local people are taken into account. The PLAN builds on the Localism Act (2011) which provided greater self-determination powers on communities than ever before. This should make South Huish a more cohesive, progressive and pleasant place in which to live, work and play.

The PLAN covers the whole parish incorporating the Hopes ‘Inner’ and ‘Outer’, Galimpton, South Huish and the residencies outside the village boundaries. The map above shows the area of interest.

In summary The PLAN will seek to:

- Influence the location, scale and type of development(s) in the parish of South Huish, especially housing.
- Deliver services and infrastructure to meet the day-to-day needs of residents.
- Protect local interests and influence new infrastructure linked to nearby developments.

- Protect and enhance the conservation areas within the parish, particularly the Area of Outstanding Natural Beauty, the South Devon Heritage Coast and the Coastal Preservation Area - see map below.
- Maintain and enhance the footpath links within the parish and to neighbouring areas.
- Assist local businesses to achieve their potential in line with the wishes of the community.

The Neighbourhood Plan Steering Group wants to ensure that local residents, businesses and home owners have opportunities to get involved in The PLAN throughout the process. This questionnaire is about key issues and the potentially different options to address them.

A Neighbourhood Plan is:

A guide prepared by residents, to identify the characteristics of the neighbourhood that they value most. It provides guidelines on how these should be respected in any future building work and focuses on design features that are acceptable to the community. It identifies the current services and facilities available to the community and suggests ways of developing these to meet future needs. It is based on the analysis of consultations with all residents, and is therefore very democratic.

The 'neighbourhood' is here defined as the limits of the parish. The area has been approved by the district council. On occasions the questionnaire will refer to the 'vicinity' which is here defined as taking in the neighbouring parishes and Kingsbridge.

A key aspect of Neighbourhood Plans is that they are written and researched by the local communities themselves, with only advisory input from the Unitary Authority. Without such a plan, a community may be much more vulnerable to undesirable development and less likely to obtain the facilities it needs. A neighbourhood plan may take up to two years to develop and get adopted but then The PLAN has formal status in the planning system. It must be taken into account when assessing planning applications.

The process

In accordance with the guidelines, a Steering Group has been formed to take the process forward for South Huish. The Steering Group's aim is to consult with as many residents, businesses and home owners as possible, to create a valid profile of the community in all its aspects. Responses to this questionnaire will provide us with the community's views. The responses will be analysed and used to create a profile document, which subsequently will be distributed to the community. An application for approval to proceed will then be made to South Hams District Council. If they approve, the results will be used in the preparation of a draft Neighbourhood Plan. Following final consultation with the community, this will be presented to the District Council for adoption.

The questionnaire is being sent to every individual on the Register of Electors. A single copy is also being delivered to each dwelling with no listed elector (holiday and second homes). Each copy is numbered for ballot security purposes. The distribution listing will be destroyed after the whole process has been completed, therefore ensuring no person's views will be identifiable.

The information that is collected will be used solely for the purposes of creating a database to undertake production of The Plan. No information will be shared with any third party.

COMPLETED questionnaires should be taken to the Malborough or Hope Cove Post Offices / shop and handed in over the counter.

Alternatively a member of the steering group will collect questionnaires from your household. The closing date for completed questionnaires will be Monday the 18th of April. If you would like your questionnaire collected in the parish please contact Tom Windle tel: 01548 562 021

The steering group will collate and analyse all responses and then produce a Neighbourhood Plan. This plan will be sent out in the same way as the questionnaire. You will be asked to comment and vote on its acceptability. The ballot paper will be a simple 'Yes' or 'No'.

If the answer is 'Yes', the plan will become adopted, and South Hams District Council will be required to note its views on all planning matters.

Please complete this questionnaire in order to let us know what you think is important when planning for the future of our village. The questionnaire is quite long but it is hoped that the information gathered will serve the community well and provide relevance for the next ten years. Please answer as many questions as you can and use the comments areas to record additional thoughts. **If a question has no relevance to you please write N/A next to the question.** Thank you.

Pop-in sessions will be held at the Fishermen's Reading room (Inner Hope) from 10 am until 4 pm on Thursday March the 24th and Thursday March the 31st.

If you need any help, or you have any comments or questions regarding this Questionnaire, please contact the Neighbourhood Plan Steering Group representatives:

Tom Windle – Galmpton PLAN representative and PLAN coordinator contact tel: 561 021 email: tom@ariadnebc.co.uk

Peter Coates - South Huish PLAN representative, tel: 01548 562 295 email: lp49coates@gmail.com

Jan Carter – Parish Council Clerk, tel: 01548 560 086 email: south.huish.pc@btinternet.com

Graham Phillips - Hope Cove PLAN representative, tel: 01548 562 047 email:

graham_phillips@hotmail.co.uk

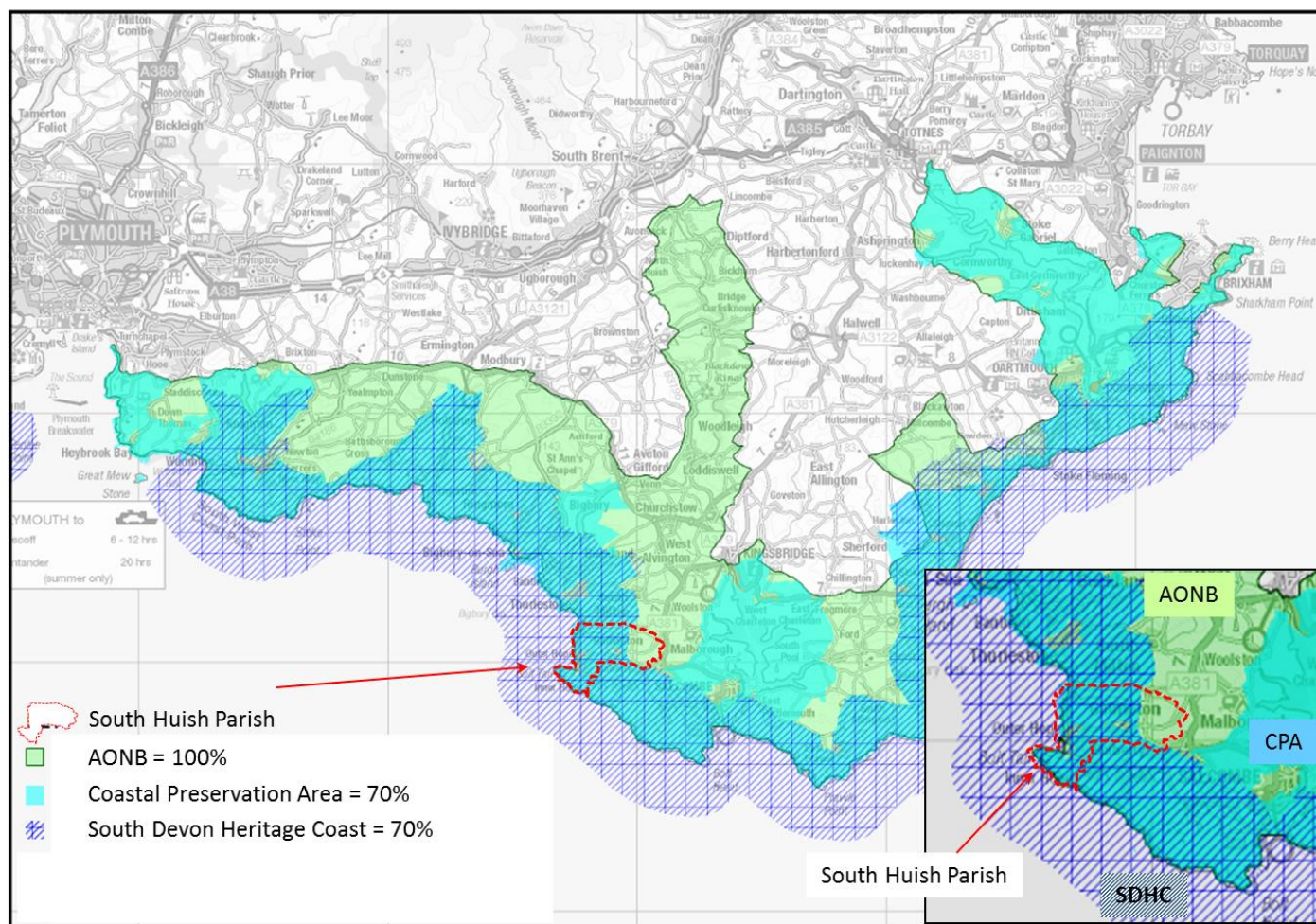
For additional information visit www.hugofox.com/community/south-huish-parish-council-7962/neighbourhood-plan

Description of South Huish Parish

The parish is one of the smaller parishes in the South Hams being only 3.3 square miles. At the 2011 census it had 428 residents and 484 properties. It occupies one of the most attractive and scenic coastal locations heavily protected by the designations of **SOUTH DEVON HERITAGE COAST**, an **AREA of OUTSTANDING NATURAL BEAUTY** and of the **COASTAL PRESERVATION AREA**. The entire parish lies within the AONB and 70% is in the South Devon Heritage Coast and Coastal Preservation Areas – see map below.

The Parish has three distinct areas; Hope Cove split between Inner and Outer Hope with 328 properties of which 82 (25.5%) are permanently lived in, Galmpton with 102 properties of which 74 (72.5%) are permanently lived in and South Huish valley which runs from Court Barton down to Thurlestone Rock where there are 64 properties of which 9 (14.1%) are permanently lived in.

South Devon Heritage Coast showing the Area of Outstanding Natural Beauty and Coastal Preservation Area.



The 2011 census reported that 38.1% of the population was 65 and over; this means our average age is one of the highest in England - the country average is 16.0%. In total it is estimated that the permanent population to be just over 400 of which around 10% are 18 years or younger.

As a parish we are very dependent on adjoining parishes and the map above clearly shows that the major conurbation of Kingsbridge is around 4 miles away; Malborough and Salcombe also have necessary services. On occasions the questionnaire uses the term 'Vicinity' and this refers to our adjoining parishes and the town of Kingsbridge – see map below.

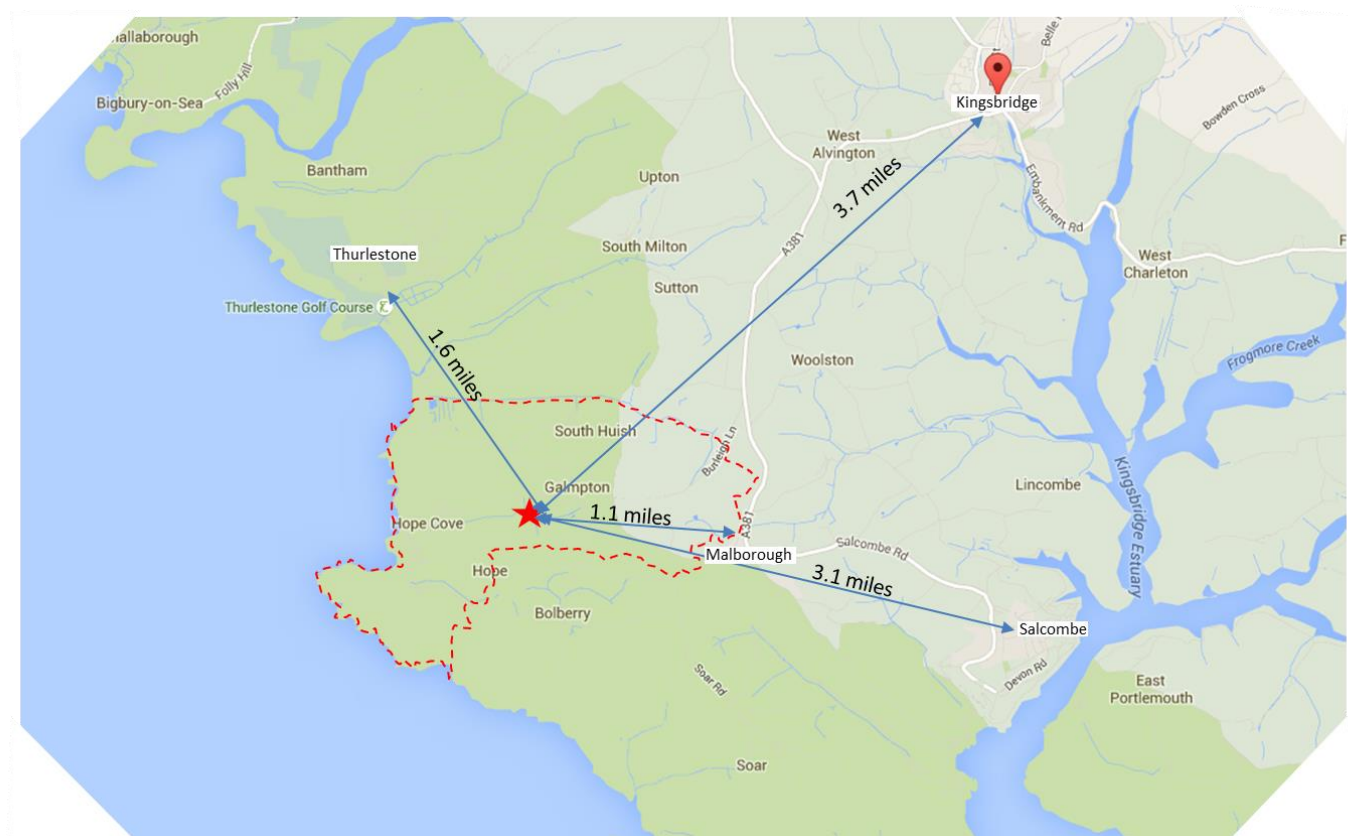
And lastly perhaps it is worth recalling the 1989 to 2001 South Hams Local Plan in relation to the area, it stated; “... *The communities of Inner and Outer Hope occupy adjacent valleys ... recent development [1989 to 1991] has spread inland and crept across the hill dividing the villages, merging them together. Many properties have become second homes ...*” [Now said to be more than 70%].

“... The landscape setting of Hope Cove is particularly important. The village lies entirely within the Area of Outstanding Natural Beauty, where there will be a presumption against development except where this is necessary to the economic or social well-being of the locality or will

enhance its character. The village is also closely contained on all sides by the Coastal Preservation Area. Any development proposals in the village should carefully respect this sensitive coastal landscape...” This survey will set the scene for the parish for the next 10 to 15 years.

The vicinity: showing straight line distances to towns and villages with infrastructure that serves South Huish.

- Kingsbridge: medical facilities, schools, transport connections, post office, retail outlets covering all normal needs.
- Salcombe: medical centre, chemist, primary school, post office, petrol station, retail outlets.
- Thurlestone: post office, primary school.
- Malborough: primary school, post office, petrol station / shop.



Contents:

| | | | |
|--------------------------|---------|-------------------------|---------|
| 1. Households | Page 6 | 9. Open spaces & Sports | Page 15 |
| 2. South Huish Assets | Page 9 | 10. Environment | Page 15 |
| 3. Community Spirit | Page 10 | 11. Transport | Page 17 |
| 4. Parish Amenities | Page 11 | 12. Sustainable Energy | Page 18 |
| 5. Education | Page 13 | 13. Communications | Page 19 |
| 6. Public Safety | Page 13 | 14. Parish Economy | Page 19 |
| 7. Concerns | Page 13 | 15. Tourism | Page 21 |
| 8. Health infrastructure | Page 14 | 16. Housing | Page 22 |

Questionnaire

This section is on households. Please note the information will not be linked to any specific household and all answers will be treated in strict confidence.

1. Households

Please enter your postcode.....

1.1 Is this your main residence? (Please circle): YES NO

1.2 Which of the following are you? (Please circle): the owner the tenant

1.3 What type of property is it? (Please tick):

☐ Detached house

☐ Semi-detached

☐ Terraced

☐ Flat

1.4 How many bedrooms are there?

1.5 How many people are in your household?

| Age group (years) | Male | Female |
|-------------------|------|--------|
| Under 5 | | |
| 5 - 10 | | |
| 11 - 16 | | |
| 17 - 25 | | |
| 26 - 65 | | |
| Over 65 | | |

1.6 How long have you lived in South Huish? (Please circle):

Fewer than 5 years. Between 5 and 15 years. More than 15 years.

1.7 What made you choose South Huish as your home? (Tick all applicable):

- Always lived here.
- Character of area generally.
- Close to workplace.
- Family connection.
- Other – please specify

1.8 Please enter numbers of people aged 18 + in the following categories:

| Category | Number |
|--|--------|
| <i>At home, retired or not working</i> | |
| <i>Working for an employer full-time</i> | |
| <i>Working for an employer part-time</i> | |
| <i>Self-employed</i> | |
| <i>A student</i> | |

1.9 If any are working, please enter the number of people whose place of work is:

- *Within the Parish*
- *Within 10 miles*
- *Over 10 miles away*

1.10 How many cars or other vehicles does your household have?

Please enter the number:

1.11 Does any member of your household have mobility difficulties? Please tick

| | | | |
|-------------|------------|----------------------|------------|
| <i>None</i> | <i>One</i> | <i>More than one</i> | <i>All</i> |
|-------------|------------|----------------------|------------|

For our younger parishioners...

THIS SECTION IS FOR YOUNG PEOPLE 4 TO 18 YEARS (inclusive). 19 years and older go straight to section 2.

Please ask the young members of your household to answer this section. If there is more than one young person, please give each person a number (1 to 4 etc.) and use it in the answers. (Use a different colour for each, if it helps).

1.12 Which school, college or place of work do you go to?

1. 2.
3. 4.

1.13 How do you travel there?

| Method | Please enter the person's number |
|---------------------------------------|----------------------------------|
| <i>School bus</i> | |
| <i>Public bus service</i> | |
| <i>Own transport (motorbike, car)</i> | |
| <i>Lift in car</i> | |
| <i>Bike</i> | |
| <i>Other – please specify</i> | |

1.14 If public transport is used, how do you rate the service?

(Please use the number): *Good* *Adequate* *Poor*

1.15 Please list any difficulties that prevent you from enjoying living in the parish (e.g. broadband speed, mobile reception, etc.).

- 1.....
- 2.....
- 3.....
- 4.....

1.16 Are there any amenities or activities within the parish that you currently use or take part in?

- 1.....
- 2.....
- 3.....
- 4.....

1.17 Are there any facilities or amenities for young people that you think the parish should have within the Parish but which are not currently available?

- 1.....
- 2.....
- 3.....
- 4.....

1.18 What do you like about living in the Parish?

- 1.....
- 2.....
- 3.....
- 4.....

1.19 What do you dislike about living in the parish?

- 1.....
- 2.....
- 3.....
- 4.....

1.20 Do you feel that one day you might wish to live independently in the parish?

Please use your number: Yes No

1.21 Do you have any other comments?

.....

.....

.....

Thank you! That completes the young person's survey

2. South Huish Assets

2.0 From the following table, please indicate up to SIX reasons why you enjoy living in South Huish ranking from 1 to 6 (with 1 being the most important and 6 the least important to you).

| | | | | | | | |
|--|--|--------------------------------------|--|-----------------------------------|--|--|--|
| It is quiet | | It has a thriving village hall | | It has an active church community | | Proximity to the beach and harbour | |
| No light pollution | | It is beautiful | | It has working farms | | People live and work in South Huish | |
| AONB/conservation area/listed buildings | | There is a strong community spirit | | There are no yellow lines | | It has small village appeal | |
| Good & safe place to bring up children | | Close to good schools | | Good mix of housing | | Alive all year round | |
| Extremely low crime rate | | A pub, shop and car park | | Good access to Kingsbridge | | Good public transport | |
| Excellent footpath network & green lanes | | Green parish (farmland, coast, AONB) | | Clubs and activities | | Any other reason (please detail below) | |

[illegible]

3.0 Where do you usually get your information about parish activities? Please circle

- | | | |
|----------------------------------|-----|----|
| - The Village Website | yes | no |
| - The Village Noticeboard | yes | no |
| - The Village Newsletter | yes | no |
| - Attending Meetings | yes | no |
| - Email | yes | no |
| - Kingsbridge & Salcombe Gazette | yes | no |
| - Word of mouth | yes | no |

0 1 2 3 4 5 6 7 8 9 10
(Strongly disagree) (Strongly agree)

0 1 2 3 4 5 6 7 8 9 10
(Strongly disagree) (Strongly agree)

0 1 2 3 4 5 6 7 8 9 10
(Strongly disagree) (Strongly agree)

0 1 2 3 4 5 6 7 8 9 10
(Strongly disagree) (Strongly agree)

[illegible]

4. Parish Amenities

4.1 How often do you use the following facilities in the parish?

| | How often | | | | | What stops you using more often? | | | | | |
|--|-----------------------|--------|---------|--------------|-------|----------------------------------|------|------------------|------------------------------|-------------------------------|------------------------------|
| | More than once a week | Weekly | Monthly | Occasionally | Never | No need | Cost | Unsuitable hours | Unsuitable courses or events | Access (parking or transport) | Other (please comment below) |
| Village hall | | | | | | | | | | | |
| Churches St Clements Holy Trinity Methodist | | | | | | | | | | | |
| Fisherman's reading room | | | | | | | | | | | |
| Post Office | | | | | | | | | | | |
| Beach | | | | | | | | | | | |
| Café / bar(s) | | | | | | | | | | | |
| Pub | | | | | | | | | | | |
| Hotels | | | | | | | | | | | |
| Mobile library | | | | | | | | | | | |
| Public telephone | | | | | | | | | | | |
| Car park | | | | | | | | | | | |
| Footpaths, bridleways | | | | | | | | | | | |
| Harbour | | | | | | | | | | | |
| Toilets (public) | | | | | | | | | | | |

4.2 Please comment on any issues or improvements you would like to see with regard to these amenities in the PLAN.

.....

.....

.....

.....

.....

.....

.....

.....

.....

.....

4.3 How valuable do you rate our amenities? *Tick as appropriate*

| | (No value) | | | | | (Very valuable) | | | | |
|--------------------------|------------|---|---|---|---|-----------------|---|---|---|----|
| | 1 | 2 | 3 | 4 | 5 | 6 | 7 | 8 | 9 | 10 |
| Village hall | | | | | | | | | | |
| Churches | | | | | | | | | | |
| - St Clements | | | | | | | | | | |
| - Holy Trinity | | | | | | | | | | |
| - Methodist | | | | | | | | | | |
| Fisherman's reading room | | | | | | | | | | |
| Post Office | | | | | | | | | | |
| Beach | | | | | | | | | | |
| Café / bars | | | | | | | | | | |
| Pub | | | | | | | | | | |
| Hotels | | | | | | | | | | |
| Mobile library | | | | | | | | | | |
| Public telephone | | | | | | | | | | |
| Car park | | | | | | | | | | |
| Footpaths, bridleways | | | | | | | | | | |
| Toilets | | | | | | | | | | |
| Harbour | | | | | | | | | | |
| Lifeboat | | | | | | | | | | |

4.4 I would like to see more activities being run from the village hall

0 1 2 3 4 5 6 7 8 9 10
(Strongly disagree) *(Strongly agree)*

What kind of activities would you recommend?

.....

4.5 Are there any amenities that are missing from the parish?

(Please specify below?)

.....

.....

.....

4.6 Do you have any further comments regarding the parish amenities?

(Please use the space at the end of section one if you require more room).

.....

.....

.....

.....

.....

.....

5. Education

5.1 Do you think there is adequate provision locally (i.e. up to Kingsbridge) for the following? (Please circle)

| | | | |
|---------------------------------|-----|----|------------|
| Parent & Toddler Groups | yes | no | don't know |
| Pre-school Groups | yes | no | don't know |
| Primary Education | yes | no | don't know |
| Secondary Education | yes | no | don't know |
| Adult Education/Evening Classes | yes | no | don't know |

5.2 Do you have any further comments regarding education facilities serving our parish?

(Please use the space at the end of section one if you require more room).

.....

.....

.....

6. Public Safety

6.1 The parish is a peaceful and safe neighbourhood: please circle a number

0 1 2 3 4 5 6 7 8 9 10
(Strongly disagree) *(Strongly agree)*

6.2 I feel safe in my home:

0 1 2 3 4 5 6 7 8 9 10
(Strongly disagree) *(Strongly agree)*

6.3 I feel safe when I am out and about in the parish:

0 1 2 3 4 5 6 7 8 9 10
(Strongly disagree) *(Strongly agree)*

7. Concerns

7.0 Do any of the following cause you direct concern within the parish?

Please circle Yes or No as appropriate.

| | | |
|-------------------------|-----|----|
| Burglary | yes | no |
| Vandalism | yes | no |
| Car Crime | yes | no |
| Dog fouling / behaviour | yes | no |
| Anti-social Behaviour | yes | no |
| Litter | yes | no |
| Fly Tipping | yes | no |
| Noise pollution | yes | no |

continued overleaf

| | | |
|-----------------------------|-----|----|
| Air pollution | yes | no |
| Traffic management | yes | no |
| Speeding | yes | no |
| Parking provision | yes | no |
| Flooding | yes | no |
| Waste disposal / management | yes | no |

7.2 Do you have any further comments or concerns regarding public safety in the parish in general?
(Please use the space at the end of section one if you require more room).

.....

.....

.....

.....

8. Health Infrastructure

8.0 I believe the surgeries in Kingsbridge and Salcombe, along with the South Hams Hospital in Kingsbridge, are sufficient to serve the needs of our parish:

0 1 2 3 4 5 6 7 8 9 10
(Strongly disagree) *(Strongly agree)*

8.1 There are sufficient caring services locally available to the parish / vicinity:

0 1 2 3 4 5 6 7 8 9 10
(Strongly disagree) *(Strongly agree)*

8.2 Access to our local hospital is acceptable:

0 1 2 3 4 5 6 7 8 9 10
(Strongly disagree) *(Strongly agree)*

8.3 Do you have any further comments regarding the health infrastructure in our parish?
(Please use the space at the end of section one if you require more room).

.....

.....

.....

.....

.....

.....

.....

.....

.....

9. Open Spaces and sports

9.0 I would like to see more open space designated for leisure facilities within our vicinity:

0 1 2 3 4 5 6 7 8 9 10
(Strongly disagree) *(Strongly agree)*

9.1 I would like to see more sport taking place within the vicinity:

0 1 2 3 4 5 6 7 8 9 10
(Strongly disagree) *(Strongly agree)*

9.2 Do you think the footpaths / bridleways are sufficiently well kept?

0 1 2 3 4 5 6 7 8 9 10
(Strongly disagree) *(Strongly agree)*

9.3 Do you have any further comments regarding the open spaces within our parish?
(Please use the space at the end of section one if you require more room).

.....

.....

.....

.....

.....

10. Environment

10.0 The Neighbourhood Plan proposes to follow the conservation principles of these three classifications. Do you agree with this? Please tick your choice

| | <i>Strongly Agree</i> | <i>Agree</i> | <i>Neutral</i> | <i>Disagree</i> | <i>Strongly Disagree</i> |
|---|-----------------------|--------------|----------------|-----------------|--------------------------|
| <i>Area of Outstanding Natural Beauty</i> | | | | | |
| <i>Coastal Preservation Area</i> | | | | | |
| <i>South Devon Heritage Coast</i> | | | | | |

Any additional comments

.....

.....

.....

10.1 The Plan proposes to protect and regenerate the following: Please tick your choice

| | <i>Strongly Agree</i> | <i>Agree</i> | <i>Neutral</i> | <i>Disagree</i> | <i>Strongly Disagree</i> |
|---|-----------------------|--------------|----------------|-----------------|--------------------------|
| <i>Public viewing points</i> | | | | | |
| <i>Landscapes</i> | | | | | |
| <i>Rivers, streams and ponds</i> | | | | | |
| <i>Devon banks, hedgerows, hedge trees</i> | | | | | |
| <i>Appropriate sites seeded with wild flowers (e.g. village Greens)</i> | | | | | |
| <i>Air quality areas (protection from air pollution and odours)</i> | | | | | |
| <i>Tranquil areas (protection from noise pollution)</i> | | | | | |
| <i>The areas between the villages from ribbon development along the roads</i> | | | | | |
| <i>wildlife in the parish</i> | | | | | |
| <i>Coastal Scenery</i> | | | | | |
| <i>The beaches and harbour</i> | | | | | |

10.2 Are there any particular areas, animals or plants you value that need protection?

.....

.....

.....

.....

10.3 Please identify any buildings/monuments or archaeological sites (whether listed or not) which you consider should be preserved/protected.

.....

.....

.....

.....

.....

.....

.....

11. Transport

11.0 Do you use the following public transport? Please tick

| | <i>More than once a week</i> | <i>Weekly</i> | <i>Monthly</i> | <i>Occasionally</i> | <i>Never</i> |
|-----------------------------------|----------------------------------|---------------|----------------|---------------------|--------------|
| <i>Public buses</i> | | | | | |
| <i>Community buses</i> | | | | | |
| <i>Taxis</i> | | | | | |
| <i>Trains</i> | | | | | |
| <i>Car sharing</i> | | | | | |
| <i>Other (please specify)</i> | | | | | |

Please comment on the convenience, suitability and quality of the available public transport.

.....

.....

.....

(Please use the space at the end of section four if you require more room).

11.1 How many vehicles and bikes does your household possess? Please tick

| | 0 | 1 | 2 | 3 | 4 or more |
|-----------------------------------|---|---|---|---|-----------|
| <i>Car</i> | | | | | |
| <i>Commercial lorry</i> | | | | | |
| <i>Motorbike/moped</i> | | | | | |
| <i>Bicycle</i> | | | | | |
| <i>Other (please specify)</i> | | | | | |

11.2 If your household uses one or more cars, please rate the following: Please circle one number:

(0 = no need for improvements)

(10 = great need for improvements)

| | | | | | | | | | | | |
|--------------------------------------|---|---|---|---|---|---|---|---|---|---|----|
| <i>Parking at home</i> | 0 | 1 | 2 | 3 | 4 | 5 | 6 | 7 | 8 | 9 | 10 |
| <i>Parking within the parish</i> | 0 | 1 | 2 | 3 | 4 | 5 | 6 | 7 | 8 | 9 | 10 |
| <i>Parking at the beach</i> | 0 | 1 | 2 | 3 | 4 | 5 | 6 | 7 | 8 | 9 | 10 |
| <i>Condition of the roads</i> | 0 | 1 | 2 | 3 | 4 | 5 | 6 | 7 | 8 | 9 | 10 |
| <i>Traffic congestion</i> | 0 | 1 | 2 | 3 | 4 | 5 | 6 | 7 | 8 | 9 | 10 |

11.3 Please comment on any transport issues or improvements you would like considered in the neighbourhood plan.

.....

.....

.....

.....

12. Sustainable energy

12.0 Which of the following kinds of sustainable energy generation would fit within our Parish?

| | <i>Strongly agree</i> | <i>Agree</i> | <i>Neutral</i> | <i>Disagree</i> | <i>Strongly disagree</i> |
|---|-----------------------|--------------|----------------|-----------------|--------------------------|
| <i>Heat pumps, ground and air source</i> | | | | | |
| <i>Solar panels on buildings</i> | | | | | |
| <i>Solar panels on green fields</i> | | | | | |
| <i>Hydroelectric</i> | | | | | |
| <i>Bio-fuel (wood fuel to generate heat)</i> | | | | | |
| <i>Anaerobic digestion (compost waste to generate gas and heat)</i> | | | | | |
| <i>Wind turbines – maximum height 48 feet (15 metres)</i> | | | | | |
| <i>Wind turbines – maximum height 78 feet (24 metres)</i> | | | | | |
| <i>Wind turbines – maximum height 148 feet (45 metres)</i> | | | | | |
| <i>Or taller wind turbines</i> | | | | | |

12.1 I think the PLAN should encourage the conservation of energy?

For example turning off outside lighting at midnight?

0 1 2 3 4 5 6 7 8 9 10

(Strongly disagree)

(Strongly agree)

12.2 Would you support a Parish policy to encourage all new builds and major refurbishments to include (where feasible) the following:

| | <i>Strongly agree</i> | <i>Agree</i> | <i>Neutral</i> | <i>Disagree</i> | <i>Strongly disagree</i> |
|---|-----------------------|--------------|----------------|-----------------|--------------------------|
| <i>Solar energy capture</i> | | | | | |
| <i>Heat pumps, ground or air source</i> | | | | | |
| <i>Grey water (sinks / showers /baths but NOT toilets)recycling</i> | | | | | |
| <i>Biomass boilers</i> | | | | | |
| <i>Water power</i> | | | | | |

13. Communications

13.0 Please rate the service provided on any of the following communications you use.

Please circle one number below:

(0 = no need for improvements)

(10 = great need for improvements)

| | | | | | | | | | | | |
|-----------------------|---|---|---|---|---|---|---|---|---|---|----|
| Landline | 0 | 1 | 2 | 3 | 4 | 5 | 6 | 7 | 8 | 9 | 10 |
| Broadband | 0 | 1 | 2 | 3 | 4 | 5 | 6 | 7 | 8 | 9 | 10 |
| Mobile phone coverage | 0 | 1 | 2 | 3 | 4 | 5 | 6 | 7 | 8 | 9 | 10 |
| 3G coverage | 0 | 1 | 2 | 3 | 4 | 5 | 6 | 7 | 8 | 9 | 10 |

13.1 Do you think a 'welcome pack' would be a good idea for newcomers, containing information and contacts on services and activities within the Parish? *Please circle*

Yes

No

Please use the space below if you wish to add any further comments regarding any questions on communications:

.....

.....

.....

.....

.....

14. Parish Economy

14.0 Should any of the following business activities be encouraged in and around the parish?

(Please circle as appropriate)

Agriculture/Horticulture

yes

no

Fishing

yes

no

Tourism

yes

no

Small business development

yes

no

Working from home

yes

no

Retail

yes

no

Other (please state).....

14.1 I support the expansion of current businesses to maintain economic growth within the parish:

0 1 2 3 4 5 6 7 8 9 10

(Strongly disagree)

(Strongly agree)

14.2 I am in favour of the diversification of farms and farmland within the parish:

0 1 2 3 4 5 6 7 8 9 10
(Strongly disagree) (Strongly agree)

14.3 I am in favour of the diversification of other businesses within the parish:

0 1 2 3 4 5 6 7 8 9 10
(Strongly disagree) (Strongly agree)

14.4 Small business sustainability is important to the long-term future of the parish:

0 1 2 3 4 5 6 7 8 9 10
(Strongly disagree) (Strongly agree)

14.5 Should the Plan endeavour to find a site that would provide a business park within the parish?

0 1 2 3 4 5 6 7 8 9 10
(Strongly disagree) (Strongly agree)

14.6 I am in favour of encouraging more tourists to visit our parish:

0 1 2 3 4 5 6 7 8 9 10
(Strongly disagree) (Strongly agree)

14.7 To sustain our parish as a viable working parish we need to be flexible and welcome change:

0 1 2 3 4 5 6 7 8 9 10
(Strongly disagree) (Strongly agree)

14.8 The PLAN should allocate sites for employment within the parish:

0 1 2 3 4 5 6 7 8 9 10
(Strongly disagree) (Strongly agree)

14.9 What, if any, changes would you like to see regarding employment strategies/policies in the parish?

.....

.....

.....

.....

.....

.....

.....

.....

.....

15. Tourism

15.0 The tourist trade is essential to a strong local economy; the PLAN should recommend supporting the categories listed below: please tick your choice

| Category | Strongly Agree | Agree | Neutral | Disagree | Strongly Disagree |
|--|----------------|-------|---------|----------|-------------------|
| <i>Improve our roads</i> | | | | | |
| <i>Improve our public signage</i> | | | | | |
| <i>Ensure local services are adequate - shops, pubs, taxis, buses, information</i> | | | | | |
| <i>Keep our area tidy and maintained, including buildings</i> | | | | | |
| <i>Protect our landscape</i> | | | | | |
| <i>Better publicity for our attractions</i> | | | | | |
| <i>Promoting and developing our open public spaces</i> | | | | | |
| <i>Improve parking facilities and cap charges</i> | | | | | |
| <i>Ensure our 3 beaches and harbour are kept in prime condition</i> | | | | | |
| <i>Continue to support our hotels and B&B facilities</i> | | | | | |
| <i>Continue to ensure that the South West Coast Path is well maintained and promoted</i> | | | | | |
| <i>Continue to support the AONB status of the parish</i> | | | | | |

15.1 Do you have any other comments on tourism?

.....

.....

.....

.....

16. Housing

16.0 Bearing in mind any future development will need a full housing survey, do you think there will be a need for more housing in the parish over the next 20 years?

Please circle one number:

0 1 2 3 4 5 6 7 8 9 10

(0 = no need for more housing)

(10 = a great need for more housing)

16.1 If you think there is a need for more housing, do you think it should be: (Tick 1 box)

| | | |
|----------------------------------|-----------------------------------|---------------------------------|
| Within existing village boundary | Outside existing village boundary | Anywhere suitable in the parish |
|----------------------------------|-----------------------------------|---------------------------------|

16.2 Should new housing be built in small or large developments? (Tick 1 box)

| | | |
|----------------------------|----------------------------|-----------------------------------|
| Developments of 1-3 houses | Developments of 4-9 houses | Developments of 10 or more houses |
|----------------------------|----------------------------|-----------------------------------|

16.3 Do you think the Neighbourhood Plan should take reasonable proactive steps to enable working age and young people to live in the parish?

0 1 2 3 4 5 6 7 8 9 10

(Strongly disagree)

(Strongly agree)

16.4 Do you or your family have a need for a specific type of housing in South Huish parish?

| | To rent | To buy | Shared ownership | How many bedrooms do you need? |
|---|---------|--------|------------------|--------------------------------|
| Affordable (social) housing | | | | |
| Private housing to buy or rent | | | | |
| Sheltered housing | | | | |
| Housing adapted for those with disabilities | | | | |
| Live/work | | | | |
| Self-build | | | | |

16.5 If you believe the PLAN should support an 'Affordable (social) Housing' scheme at what level do think the rental or purchase prices should be set?

| | |
|---------------------------------|-----------------------------|
| Rental payment per month | House purchase price |
| £ | £ |

16.6 Thinking about the needs of the parish / vicinity over the next 20 years:

a) How great is the need for affordable housing?

0 1 2 3 4 5 6 7 8 9 10
(0 = no need) (10 = a great need)

b) Should legal agreements be added to planning permissions for affordable housing to give priority to people with local connections?

0 1 2 3 4 5 6 7 8 9 10
(0 = Strongly disagree) (10 = Strongly agree)

c) How should affordable housing allocation be managed?

| |
|------------------|
| Charitable Trust |
|------------------|

| |
|-----------------|
| Local committee |
|-----------------|

| |
|---|
| Housing association (with local lettings plan) |
|---|

Tick your preference

d) Should we provide for Live/work units?

0 1 2 3 4 5 6 7 8 9 10
(0 = no need) (10 = a great need)

e) Should we provide for Self-build houses/flats?

0 1 2 3 4 5 6 7 8 9 10
(0 = no need) (10 = a great need)

f) Should we provide for sheltered housing for the elderly?

0 1 2 3 4 5 6 7 8 9 10
(0 = no need) (10 = a great need)

g) Should we provide for open market housing?

0 1 2 3 4 5 6 7 8 9 10
(0 = no need) (10 = a great need)

16.7 The Plan should seek to keep the villages separate by discouraging the tendency for ribbon developments along the roads?

0 1 2 3 4 5 6 7 8 9 10
(Strongly disagree) (Strongly agree)

16.8 Are there any specific locations in the parish which you consider suitable for new housing development?

Please name a site or sites and give details of the location (or indicate on the map at the end of the survey).

.....
.....

16.6 Do you think any of the following is important for new housing?

Tick your preferences

| | important | preferable | unimportant |
|---|-----------|------------|-------------|
| <i>Designed in a traditional local style</i> | | | |
| <i>Designed in a contemporary style</i> | | | |
| <i>Includes car park spaces/garages</i> | | | |
| <i>Includes live/work opportunities</i> | | | |
| <i>Reflects current standards of energy conservation</i> | | | |
| <i>Respects the local heritage and conservation areas in use of materials</i> | | | |
| <i>Includes private gardens</i> | | | |
| <i>Includes green spaces around developments</i> | | | |

Please use the space below if you wish to add any further comments regarding any questions in Section 16:

.....

.....

.....

.....

Nearly finished!

I agree that this questionnaire broadly reflects my local concerns and aspirations, and covers the issues or considerations I would like taken into account by the Neighbourhood Plan.

0 1 2 3 4 5 6 7 8 9 10
(I strongly disagree) (I strongly agree)

If not please specify what has yet to be addressed:

.....

.....

.....

.....

PS If you have any additional comments feel free to note them down on a separate sheet of paper and enclose it with your completed questionnaire!

Thank You for your time and contribution!

Soon we will be able to let you have the results.

COMPLETED questionnaires should be taken to the Malborough or Hope Cove Post Offices / shop and handed in over the counter or contact Tom Windle (tel 01548 562 021) for collection within the parish by the 18th April.