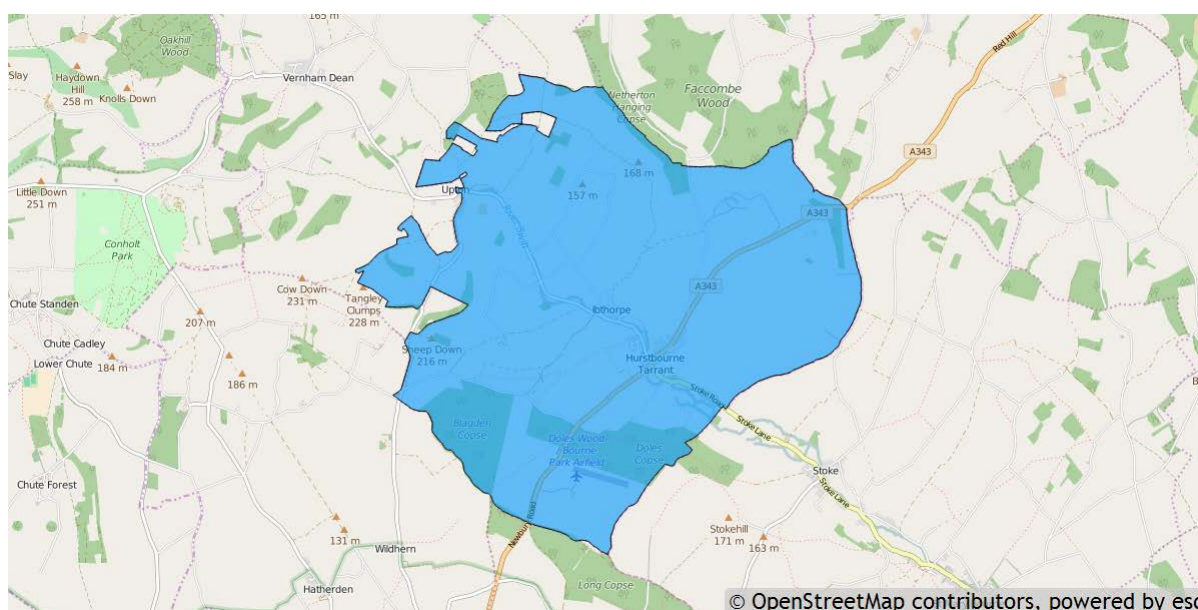


Hurstbourne Tarrant parish profile

This profile provides a summary of the latest available information on the demographic make-up of the Hurstbourne Tarrant parish within Test Valley. It looks at information on topics such as the population structure, economic, housing, health and educational information for the parish.

Hurstbourne Tarrant is one of the 59 parishes in Test Valley. It has an area of 1,955 hectares which represents 3.1% of the total area of Test Valley



Elected representatives

Hampshire County Councillor Cllr Timothy Rolt Home: 01264 358365 Mobile: 07795 204233 Email: timothy.rolt@hants.gov.uk	Test Valley Borough Councillor Cllr Peter Giddings Home: 01794 737647 Mobile: 07721 051832 Email: cllrpgiddings@testvalley.gov.uk
Hurstbourne Tarrant Parish Council Chairman Cllr D Sullivan Daytime: 01264 736514 Email: horseshoelane2@btinternet.com	Hurstbourne Tarrant Parish Council Clerk Mr D Bakes Daytime: 01264 736436 Email: theparishclerk@hbt.org.uk

Residents

The estimated 2016 population of Hurstbourne Tarrant parish is 851. This is expected to decrease to 838 by 2021 (a decrease of 1.5%).

Hurstbourne Tarrant's resident population is 53.6% female and 46.4% male.

Young people (0-19) currently make up 24.2% of Hurstbourne Tarrant's population; this is expected to fall to 22.9% by 2021.

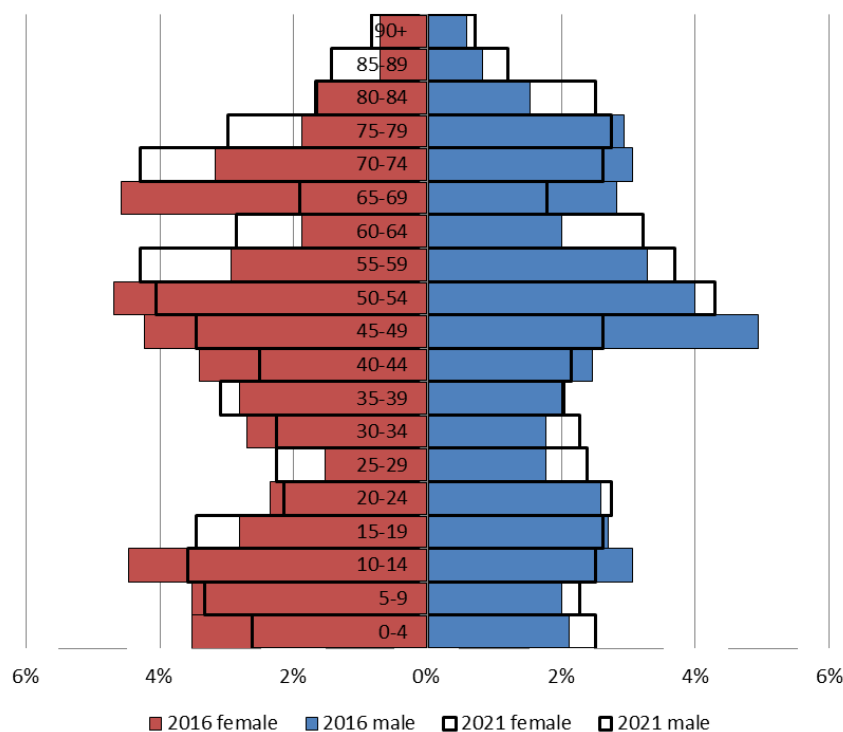
Young adults (20-39) currently make up 17.5% of the parish's population; this is expected to rise to 19.2% by 2021.

Middle aged residents (40-64) currently account for 33.8% of Hurstbourne Tarrant's population; this is expected to fall slightly to 33.2% by 2021.

Those **aged 65 and over** make up 24.4% of the parish's population; this is expected to rise slightly to 24.7% by 2021.

Those **aged 85 and over** currently represent 2.8% of the population; this is expected to rise to 4.2% by 2021.

Age of parish population



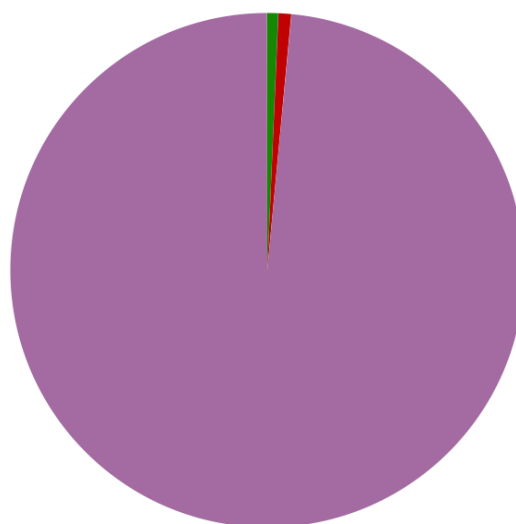
Ethnicity

The largest ethnic group in Hurstbourne Tarrant is “White” at 98.5% of the parish's population. That compares with a figure of 95.9% for Test Valley as a whole and 95.0% for Hampshire.

The second largest ethnic group (0.8%) is “Mixed/multiple ethnic groups”. That compares with 1.3% for Test Valley as a whole and 1.4% for Hampshire.

Residents by ethnicity (count)

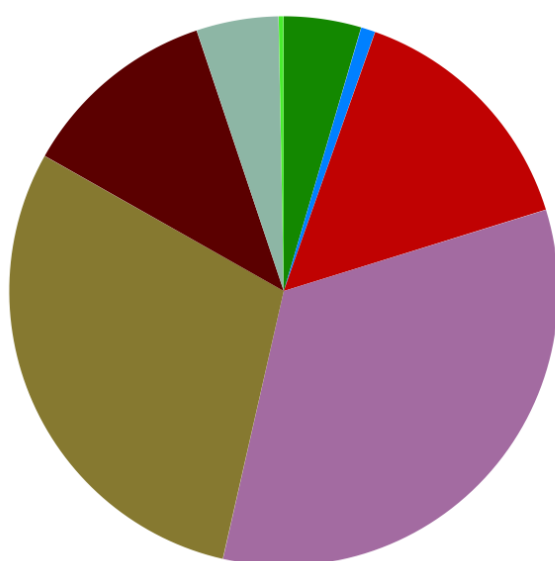
Residents who are Asian/Asian British	6
Residents who are Black/African/Caribbean/Black British	0
Residents who are Mixed/multiple ethnic groups	7
Residents who are White	851
Residents who are Other ethnic group	0



Powered by esd

Households

Hurstbourne Tarrant parish has **351 households**, which represent 0.7% of Test Valley's 47,626 households. The household split by tenure is shown below (tenure refers to the financial arrangements under which a home is occupied).



Households by tenure (count)

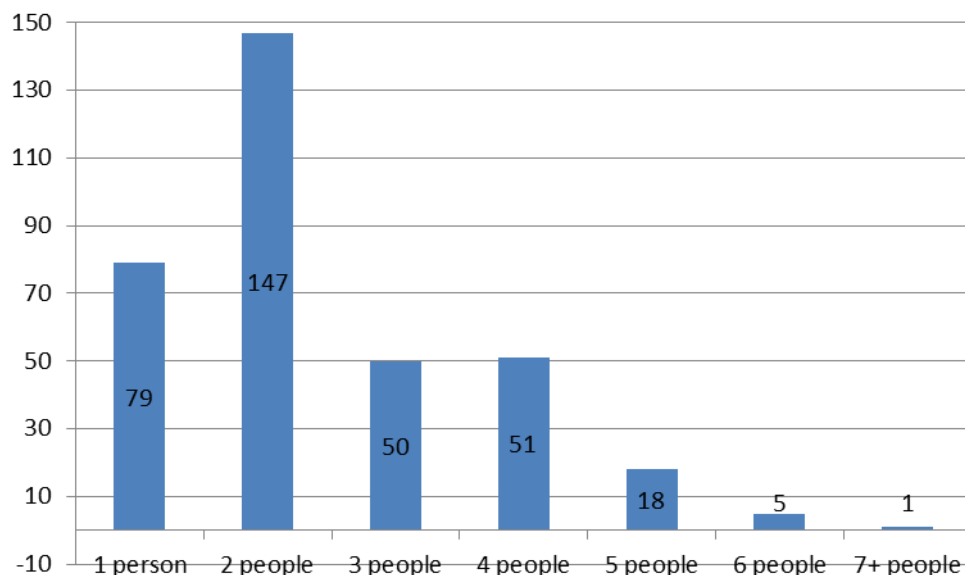
Households rented from council or equivalent	16
Households rented from other private owners	3
Households rented from other social landlords	52
Households owned outright	117
Households owned with a mortgage or loan	104
Households rented from private landlord or letting agency	41
Households where occupiers living rent free	17
Households in shared ownership	1

Powered by esd

The majority of properties (63.0%) are **owned by those who live in them**. This is less than the Test Valley average of 70.4%.

12.5% of Hurstbourne Tarrant households are **privately rented**, and 19.4% are **socially rented**. This compares to 12.9% and 14.4% respectively across Test Valley.

Households by number of residents



41.9% of Hurstbourne Tarrant's households are occupied by two people, and 22.5% by one person. 35.6% of the parish's households are occupied by more than two people.

Hurstbourne Tarrant has 34 households with **dependent children aged 0 to 4**. That represents 9.7% of the parish's households.

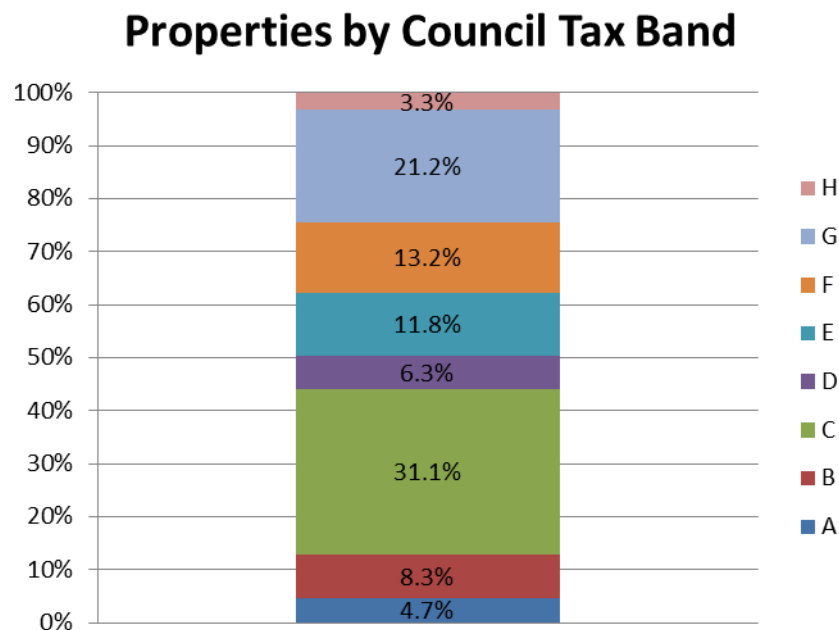
111 households in the parish have **dependent children of all ages**. That represents 31.6% of the parish's households.

House prices

According to Zoopla, the average house price in Hurstbourne Tarrant (as of September 2016) is **£560,987**. This has increased by 24.7% in the last five years.

It is estimated that **38.2% of households in north rural Test Valley cannot afford to buy a private property**. The north rural area includes the wards of Bourne Valley, Anna, Amport, Bourne Valley, Harewood, Over Wallop, and Penton Bellinger.

Council Tax Bands



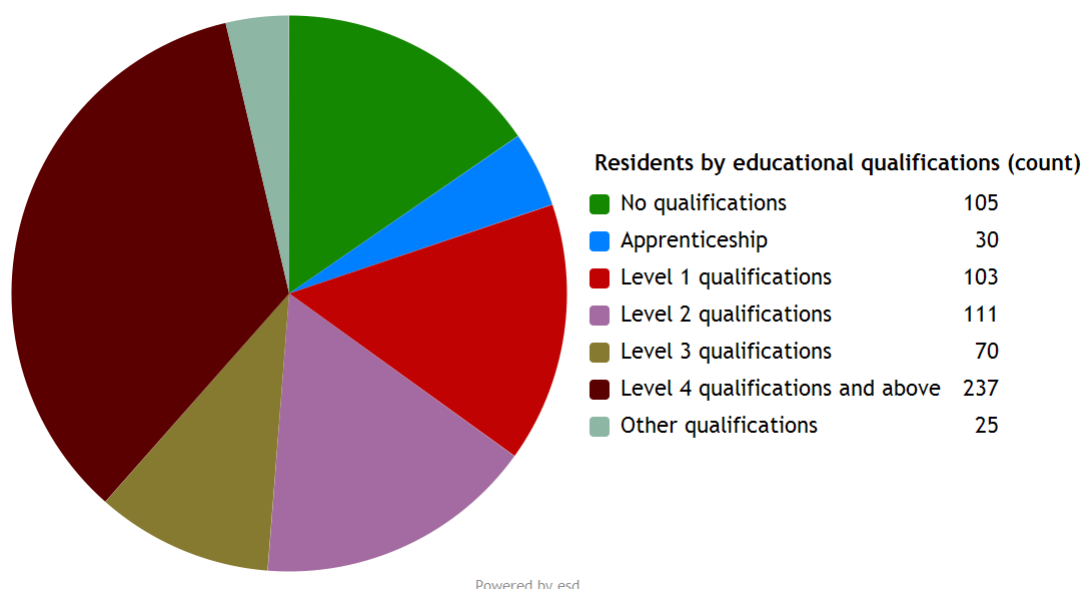
13.0% of Hurstbourne Tarrant properties are at the **lower** end of the property market (Bands A and B). This compares to 22.2% for Test Valley as a whole.

49.2% of the parish's properties are in the **middle** range of the property market (Bands C to E). This compares to 60.8% across the whole borough.

37.7% of Hurstbourne Tarrant's properties are at the **higher** end of the property market (Bands F to H). This compares to 17.1% of all Test Valley properties.

Education

34.8% of Hurstbourne Tarrant's residents have achieved **level 4 qualifications** and above compared to 30.5% in Test Valley as a whole. 15.4% of Hurstbourne Tarrant's residents have **no qualifications** compared to 18.4% in Test Valley.



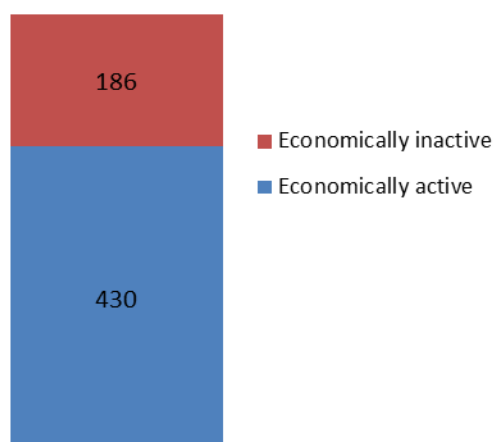
No qualifications	No academic or professional qualifications.
Level 1	1+O level passes, 1+CSE/GCSE any grades, NVQ level 1, Basic/Essential skills, NVQ Level 1.
Level 2	5+O level passes, 5+GCSEs (grades A*-C), 1 A level, 2-3 AS levels, City and Guilds Craft, NVQ level 2.
Level 3	2+A levels, Higher School Certificate, NVQ level 3, City and Guilds Advanced Craft, BTEC National.
Level 4/5	Degree (e.g. BA, BSc) higher degree (e.g. MA, PhD, PGCE), NVQ levels 4 and 5, qualified teacher, nurse or accountant status, BTEC Higher.
Other qualification	Level unknown, vocational/work-related qualifications, foreign qualifications.

Employment

69.8% of Hurstbourne Tarrant residents aged 16-74 are **economically active**, compared to 73.4% of Test Valley residents. This includes people in full, part and self-employment, those who are actively seeking a job, and full-time students.

The remaining 30.2% of residents aged 16-74 are **economically inactive**, compared to 26.6% of Test Valley residents. This includes people who are retired, long-term sick or disabled, or who look after the home and family.

Economic activity (count)

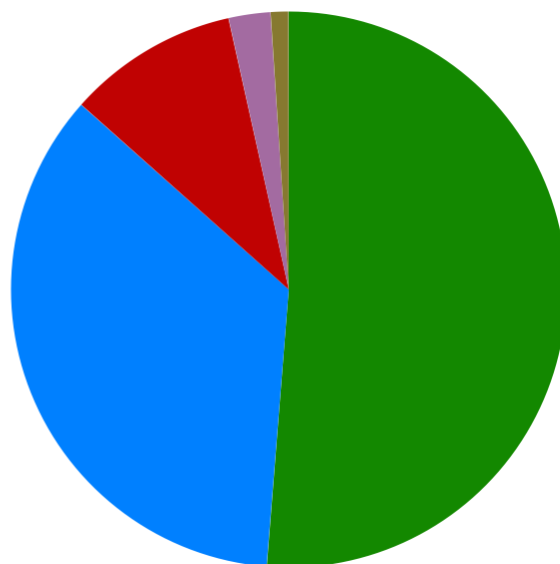


Health

Hurstbourne Tarrant has 21 (2.4%) residents that report being in **bad health** and 9 (1.0%) residents that report being in **very bad health**.

Residents by level of health (count)

Very good health	443
Good health	305
Fair health	86
Bad health	21
Very bad health	9



Powered by esd

Community plans

Details of any community planning exercises your parish is undertaking can be added here. Please get in touch with the Policy Team at the email address below and we will be more than happy to add information at your request.

Local facilities

Food stores	Yes
Other shops	Post Office
Primary schools	Hurstbourne Tarrant Primary School
Secondary schools	None
Health facilities	None
Leisure facilities	Recreation ground
Public houses	George and Dragon
Community facilities	Hurstbourne Tarrant Community Centre
Churches	St Peter's Church
Local recycling centres	Royal British Legion

Public and community transport

Stagecoach number 7

This bus service runs between Newbury and Andover via several Test Valley villages, including Abbots Ann.

More information about the route and the timetable can be found online at:

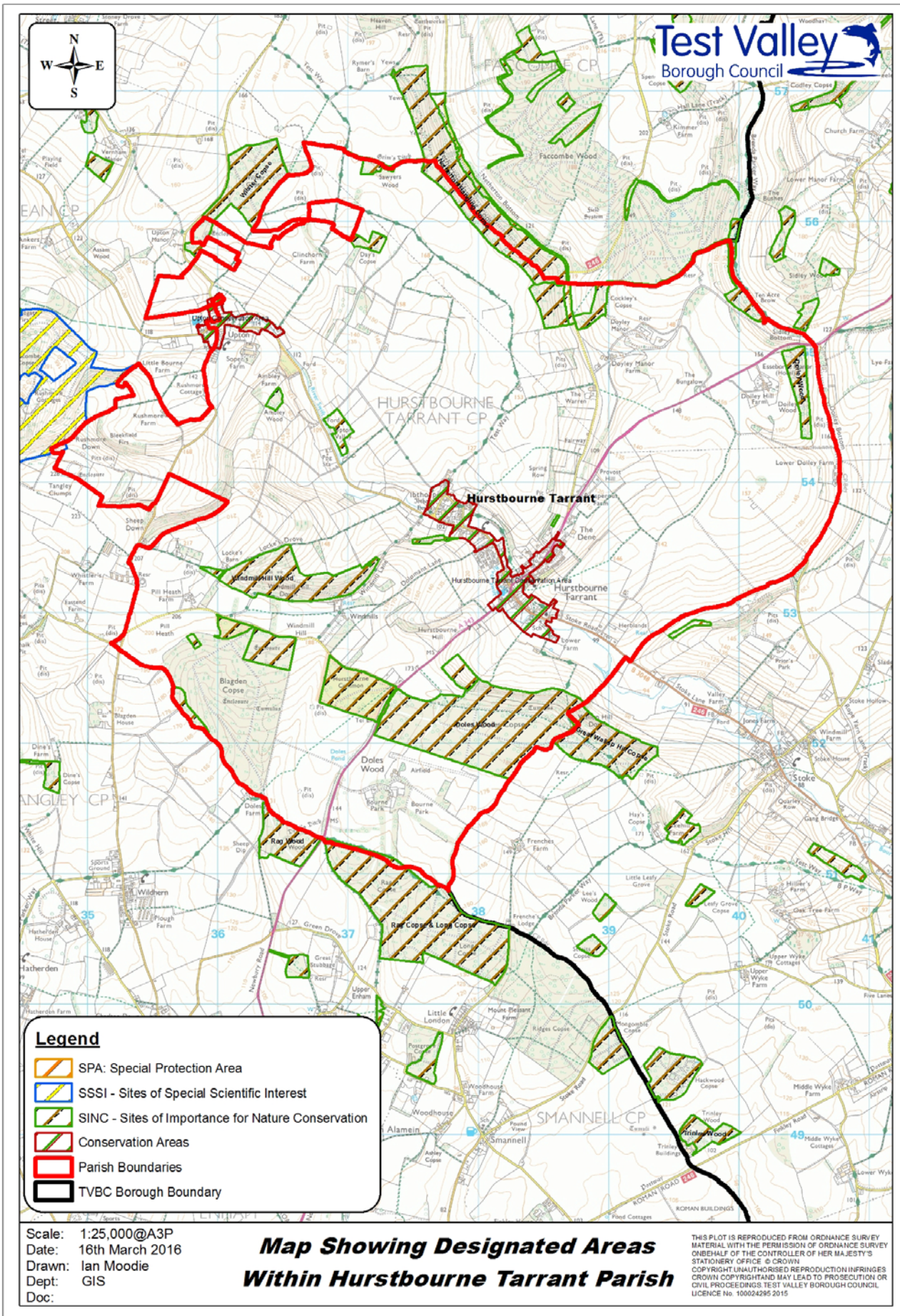
<http://bit.ly/2eOePqd>

Andover Cango C3 bus service

This bus service operates back and forth from Andover bus station stopping at various villages, including Hurstbourne Tarrant.

For more information please visit:

<http://bit.ly/2epJfMV>



Additional information

The information in this profile has been prepared by Test Valley Borough Council's Policy Team in partnership with the Local Government Association. If you would like further information, please contact the Policy Team on 01264 368000 or policyteam@testvalley.gov.uk, and we will be happy to work with you to provide a more detailed profile.

This profile contains key information for you to use to contribute to the development of a Neighbourhood Plan or other community project. If you know of any additional information about the parish that may be of use (for example, information on local facilities) please get in touch and we will endeavor to work with you to add to or change the profile.

Please note that most of the data featured in this profile is taken from the 2011 Census, whilst the population data is taken from Hampshire County Council's 2016 Small Area Population Forecast. Therefore, there is some discrepancy in population figures.