



OHSMag

THE COMMUNITY MAGAZINE FOR
ONEHOUSE, HARLESTON & SHELLAND

JUNE 2026 —ISSUE 619

ohsmag@onehouseparishcouncil.gov.uk - www.facebook.com/suffolkohsmag

S J Wallace Builders Ltd.

Extensions, Kitchens & General
Building
Residential & Commercial
Visit our website at
www.sjwallacebuilders.co.uk

Tel : 01449 672997
Mobile : 07788 560482
Free Estimates Est. 1987

TC Groundworks & Maintenance

Patios • Foundations
Concreting • Drainage
Landscaping • Extensions
Fascia & Guttering
Demolition

NO JOB TOO BIG OR TOO SMALL

For a FREE quote call
01449 614403 or
07775 500525
www.tcgroundworks.co.uk

BJW

PLUMBING & HEATING



Boiler Servicing
Central Heating Installation
Maintenance & repairs
Bathroom Suites, Showers
Burst / Leaking pipes
Water Softeners
General Plumbing needs

For a local, reliable plumbing and
heating engineer call:

Barry Ward 01449 615339 or
07734 872549

PILATES CLASSES

Onehouse Community Centre

Classes: Mondays 5.15, 6.20 and 7.25pm Thursdays 5.45 and 6.50pm

Tuesday 1.45pm in Stowmarket

Pilates is low impact, controlled exercise suitable for all ages and abilities
Medically recommended to improve back and joint pain

Improve your core strength, flexibility, posture, balance & tone your body

Please see www.firstchoicepilates.co.uk for more info
call Lynn 07788 718095 Email: Lynn@firstchoicepilates.co.uk



Local + Reliable

**Part P Approved
Contractor**

ELECSA Registered

**All Types Of Work
Carried Out**

Bryan Jones Electrical



01449 672948
07892 841891

ELECSA

Editor's Letter

Welcome to the June edition of OHSMag. For many of us the prospect of Wimbledon, strawberries and sunny evenings make June a joyful month—but for those in the thick of their exams it can be a stressful one, good luck to any of our residents facing exam season —and to all those supporting them, well done!

Plans for an online edition of our magazine have been made, and I am delighted to share that it can be found here:

[//www.hugofox.com/community/ohsmag-21235/home](http://www.hugofox.com/community/ohsmag-21235/home)

For now, you will continue to receive a paper copy through your letterbox, but I would encourage you to bookmark the site.

If you would like to share any news of local events, fundraising activities, or your own hobbies and endeavours, please continue to email the team at the address below—we love to hear from you all.

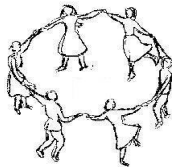
Emma

ohsmag@onehouseparishcouncil.gov.uk

Circle dancing

Gentle (mostly!) dances to world music.

*1st and 3rd Tuesday of each month. £6/session
2pm-3pm at Trinity Hall, Onehouse
No partner needed.
Jen Larner 07896 495574*



Next Mobile Library Visit

Friday 12th June



Northfield Road, 9:30–9:55am
Onehouse Church Room, 10:00–10:20am
Harleston Postbox, 10:25 –10:45am

Reflections from Penny Otton

During the 19 years I've represented you, there have been many changes to Local Government and now more in the offing. However there still remains a commitment by most of us to do the best we can for our communities, however frustrating it can be. The Forest Road footpath plans are a case in point.

Pot holes and flooding always featured in my in-box! , but there is no doubt that changes in our weather have made things worse, so I am pleased that we forced the county council to introduce policies to try to overcome these if possible, like having a strong NET ZERO.

Many villages have introduced wild flower meadows, like Harleston, which will increase the bio-diversity of the area.

Speeding was always a big issue, so I tried to get some changes to the speed limits some villages but I know where they have introduced VEHICLE ACTIVATED SIGNS it has made motorists slow down,

One of my proudest moments was getting the whole council to agree we need to protect our rivers from pollution. Also to make the council stick to its' fair and diversity policies.

I have tried to use the locality budget to help with costs of community projects such as Rattlesden and Felsham community shops, and also for improvements to village halls and playgrounds.

It has been a honour to represent my community and I wish everyone a good future.



Penny

Councillor Matt Bentley Report

Thedwastre South

A note from outgoing councillor, Penny Otton:

After 19 years and with the proposed changes to local government in Suffolk I decided not to stand for re-election. I hope I have been able to help and support the three villages and I wish you all every success in the coming years. Thank you for the support you have given me, Best wishes Penny.

At time of going to press, we can confirm that our new councillor is Matt Bentley, representing the Green Party.

Matt was elected with 33.2% share of the vote. Reform candidate David Flowerday came in 2nd place with 32.6% share; Nicky Wiltshire (Liberal Democrat) was 3rd with 15.6%, James Spencer (Conservative) 4th with 14.4%; and Alan Cohochie (Labour) 5th with 4.3% share of the vote. 4585 votes were counted in total.



A message from Matt:

I live in Thurston. When I moved here, my affection for the area was almost immediate. This is a place I intend to call home for many years to come.

We have some of the most rural communities in Mid Suffolk, but we have also seen rapid growth over the last five years.

As your county councillor, I will endeavour to make sure that any further development in our area puts the best interests of our communities before the profit margins of big developers. This will include providing better facilities for our young people and improving our roads and footpaths.

Thank you to everyone who voted Green in May 2026 to elect me at County Councillor for Thedwastre South.

News from your District Councillor - John Matthissen

Representing Onehouse, Great & Little Finborough, Combs, Harleston and Shelland

Election updates: A new County Councillor Matt Bentley (Green) was elected to Thedwastre South Division, following Cllr Penny Otton's decision to step down from the County Council.

You can contact him at Matt.Bentley@suffolk.gov.uk

Unitary elections are due to be held in May 2027.

Elected Unitary councillors will spend their first year within the three 'shadow councils', preparing for Suffolk to officially become three Unitary Councils (when both the District and County councils will be disbanded) on 1st April 2028.

The election to appoint a Mayor, representing both Suffolk and Norfolk, is now planned for May 2028.

Council funding for Neighbourhood Plans: Government funding for Neighbourhood Plans was withdrawn in June 2025, and at the same time its house building targets have significantly increased (up 40% in Mid Suffolk). Neighbourhood Plans are vital to give a voice to local communities and to ensure the right types of development are built in the right place. MSDC has therefore introduced its own funding to support parish and town councils in the preparation and reviewing of their plans (up to £20K per plan).

Recycling & Waste Collection Mid Suffolk's new waste collection service begins on 1st June as part of Government's recycling and waste initiative, when there will be four collection services as standard:

- A weekly food waste collection
- A three-weekly refuse (general rubbish) collection (black bin)
- A three-weekly paper and card collection (green bin)

- A three-weekly glass, plastic, metal and carton collection (blue bin)

Additional bins and more information with a new collection calendar should have reached each household during May.

Please let me know if you have not received your extra bins, and also email waste.management@babberghmidsuffolk.gov.uk

More information can be found on the website: <https://www.midsuffolk.gov.uk/future-changes-to-bin-collections>.

Onehouse to Woolpit Quietway There is a chance to help design this project, a second open session at Trinity Hall, Onehouse from 4pm - 7pm June 10th, and also in Woolpit on 9th.

There is also an opportunity to view and to comment on this proposed walking and cycle route between the villages, via <https://communitymap.uk/project.257>

Food Bank Don't forget there are many in need locally when you are out shopping for food and household supplies. Collection points at all supermarkets and many other places.

councillor@matthissen.net - 07976 308128 or 01449 258894
2 Brick Kiln Cottages, Barretts Lane, Needham Market IP6 8RZ
Council telephone number - 0300 123 4000
or drop in to see Council staff at the Stowmarket office



THREE VILLAGE COFFEE MORNING:

WEDNESDAYS IN TRINITY HALL - 10:30am—12:00pm
COME ALONG FOR WARMING COFFEE OR TEA & DELICIOUS
HOMEMADE CAKES, ALL FOR A SMALL DONATION.

EVERYBODY WELCOME

We look forward to seeing you soon!

Onehouse Neighbourhood Plan

Have your say on planning the future of Onehouse

Residents of Onehouse are encouraged to complete the household survey to help shape the future of the parish. Onehouse Parish Council is currently preparing a Neighbourhood Plan – a community-led planning document that will help guide how the village grows and develops over the next 20 years, including policies on housing, green spaces, local facilities and the character of future development.

Following a well-attended drop-in consultation in March, the Parish Council is now asking households to complete the online survey by 30th June 2026. The feedback received will play an important role in shaping the Plan and the results will be shared on the Parish Council website later in the summer. Residents can complete the survey online at www.tinyurl.com/onehouseplan or contact the Parish Council for help or a paper copy.

St John the Baptist – Onehouse

'Patronal' Village BBQ'

1.00pm - Sunday, 14th June '26

22 Forest Road, Onehouse

Single Ticket £15

Family £30

**Please BYO bottle/s
and chairs**



Onehouse Parish Council

On Monday 11 May 2026 The Parish Council held its Annual Meeting at Trinity Hall and confirmed key roles for the coming year.

Councillor Joanne Copping was elected Chairperson and Councillor Ian Crissell Vice-Chairman.

Annual appointments were agreed, including representatives to local organisations, the Parish Internal Auditor, and the Responsible Financial Officer.

Parish finances were reviewed, routine payments approved and current balances noted. The Council also agreed to apply for a purchasing card for the Clerk to help manage day-to-day purchases more efficiently.

Councillors considered a planning application for Northfield Road and agreed to object to the proposed front extension only, while several other planning decisions made by Mid Suffolk District Council were noted.

The Council discussed the future of OHSMag, agreeing that the magazine will move online and that the editor role will become a paid position.

Updates were received on the Neighbourhood Plan, upcoming village events including the fete, the rural caravan initiative, and ongoing work at Paupers Graves.

Several items, including grass-cutting arrangements and volunteer equipment, were postponed for further discussion at the June meeting.

The next Parish Council meeting will take place on Monday 8 June 2026 at 7.30pm. All residents welcome.

For questions, ideas, or to raise a local issue, email clerk@onehouseparishcouncil.gov.uk

Facebook: Search "Onehouse Parish Council"



Messy Noah's Ark!!



With the
Open the Book
Team!

Trinity Hall, Onehouse

Saturday 13th June

10.30am to 12.00pm

Crafts, Stories, and Food

All ages welcome, primary age children and younger welcome with their parents/carers

Places must be booked by emailing revdsarahjenkins@gmail.com

What next for the OHSMag?

As reported in earlier editions of our magazine, we are going to be making some changes.

Rising print costs are no longer being matched by advertising income, making the current format of our parish magazine financially unsustainable.

In addition, no volunteer has yet come forward to oversee the transition to digital and take on the editor role – if this is something you might be interested in, please contact our clerk Victoria for a chat via email clerk@onehouseparishmeeting.gov.uk

To help secure the future of the magazine, an accessible online version is now in place. This can be found at <https://www.hugofox.com/community/ohsmag-21235/home>

For residents who may not have easy internet access at home, a laptop is now available at the monthly Rural Coffee Caravan in Trinity Hall, where visitors can view the magazine online.

A limited number of printed A4 copies will still be produced each month and made available at key community locations, including local churches, the village hall, and Lakehouse Café, ensuring the magazine remains accessible to everyone in the parish.

We know that change can be tricky—but we also know that our parishes will continue to provide plenty of opportunities for us to come together and make us all at home. As ever, it's up to you, the residents, to make this happen.

Please share your news, get involved, come along, and take part in all that the parishes have to offer. We know you won't regret it. The July/August summer edition of the mag will be out after the fete in mid July.

News from your District Councillor - John Matthissen

Representing Onehouse, Great & Little Finborough, Combs, Harleston and Shelland

ANNUAL REPORT

Recycling update: The new recycling regime is due to start in June 2026. Mid Suffolk currently only recycles 42% of waste and is not in the top 150 Councils in the UK. Our aim is to exceed 60%. The bins are:

- Food waste
- Green recycling bin – paper and card
- Blue recycling bin – glass, plastics, tetrapaks i.e. non paper
- Black bin – refuse bin

Planning system: Mid Suffolk's housing target has increased from 535 per annum to 734 (an increase of 37%). If you include a 5% buffer this amounts to a requirement of 15,414 units for the period from 2024 to 2044, although 5,475 of these are in the current identified supply. Owing to the change in government housing targets it is vital to create a development plan that meets government targets or we end up with a planning free for all which is what happened 5 or 6 years ago. As part of this process the Council carried out a call for sites. The published map of all sites submitted during the Call for Sites exercises.

<https://www.midsuffolk.gov.uk/web/babergh/w/call-for-sites>

Note: This is **not** a list of preferred development locations. Publication promotes transparency and ensures communities have early visibility of what has been suggested. No planning status is granted by submission. Sites do not benefit from any presumption of development. Submissions will now be assessed against planning policy, constraints, evidence and deliverability criteria.

Council Housing Mid Suffolk has c.15% of Council Houses that do not meet the Decent Homes standard. We are planning to invest £19m in our Council Housing stock this year alone. Mid Suffolk was successful in obtaining a £1.5m government grant to supplement the £2m already committed by the council to install energy saving measures in social housing. This work not only helps lower income households by delivering warm and energy

efficient homes, but also lifts tenants out of fuel poverty by helping to save money on energy bills. Work is well underway to tackle the 100 council properties with the lowest EPC (energy performance certificate) ratings by adding a range of improvements, including cavity and loft insulation, new windows, PV panels and air source heat pumps. The Council has also built about 250 new Council houses in the past 3 years.

Stowmarket Innovation Gateway. Construction work on a state-of-the-art skills and innovation centre at Gateway 14 in Stowmarket has now been completed. New clients will be moving in from July 2026 and a programme of training courses is about to be launched. The purpose of the centre is address the skills gap in the district and to encourage high tech companies to locate here.

New fund for sports facilities in rural areas A £1.5m fund for Sports provision outside of Stowmarket has been established. The aim is to develop sports infrastructure in a rural areas of Mid Suffolk, outside of Stowmarket, by exploring upgrading or extending existing sites, as well as opportunities for new sports provision or facilities.

Temporary accommodation Demand for temporary housing in Mid Suffolk rose by over 100% since 2020 and there are currently over 60 households in temporary accommodation in Mid Suffolk. MSDC propose to increase the acquisition of temporary accommodation by up to 30 units. This is to provide better standard accommodation and save the Council money on temporary accommodation.

Pylons MSDC have told the public hearing that National Grid's plan for more pylons in the Suffolk countryside should be halted. National Grid proposes 159km of new overhead lines between Norwich to Tilbury, with the route cutting through the Suffolk countryside. MSDC has called for a delay to the project so other options can be considered and costed – such as an undersea route or undergrounding of the entire length of the project. They cite serious concerns about the impact on environment, communities and businesses. This is consistent with the position taken as under previous governments.

Nature recovery budget Mid Suffolk District Council has allocated a budget of £1.8m to support nature recovery. This covers:

- Grant funding for communities
- Grant funding for river catchment and landscape
- Habitat creation, management and monitoring on new sites
- recovery
- Pond creation and restoration
- Tree planting
- Meadow management
- Public engagement and awareness / Schools programme

Stowmarket high street investment Mid Suffolk District Council launched a dedicated £1.5m fund, and associated framework, to support a thriving Stowmarket high street and town centre area.

Funding has been recently agreed for £615k towards the John Peel Centre and £125k for the Community Darts Venue including a darts retail area.

Cosy Homes Cosy Homes is an energy efficiency initiative dedicated to making private sector homes in Mid Suffolk warmer, more economical to heat, and more environmentally friendly. Residents need to meet certain criteria but any works are carry out for free. The initiative aims to help residents in the district improve the energy efficiency of their home, which will help them save on energy usage and reduce their carbon footprint. The scheme has been extended to include solar panels as well as insulation measures.

Solar for Business Businesses can reduce their carbon emissions and save money on energy bills by signing up to have solar panels provided and installed on their premises, for free. Electricity generated by the panels is then sold to the business at a rate lower than their current tariff, helping to slash energy bills and improve their bottom line. Solar for Business has been running successfully in West Suffolk for nine years – helping more than a hundred companies to save a total of around £700,000 and 2,000 tonnes in harmful CO2 emissions per year.



STOWMARKET
GOLF CLUB
ESTABLISHED 1885

SUNDAY
Carvery
EVERY SUNDAY
12-3PM



VISIT

STOWMARKETGOLFCLUB.CO.UK
TO BOOK OR CALL 01449 736473



For a professional caring service

54 Bury Road, Stowmarket,
Suffolk, IP14 1JF

Tel: 01449 613130
www.stovevets.co.uk



Local Stowe Veterinary Group Surgeries:

Elmswell
The Old Tea Room Veterinary Surgery
01359 241 761
www.elmswellvets.co.uk

Bury St. Edmunds
Moreton Hall Veterinary Centre
01284 747 000
www.moretonhallvets.co.uk

Ipswich
Ipswich Veterinary Centre
01473 555 000
www.ipswichvetcentre.co.uk

Needham Market
The Mustard Pot Veterinary Surgery
01449 722 198
www.needhamvets.co.uk

Independent practices with a personal approach

A member of **FIVP** Federation of Independent Veterinary Practices

Andrew Bingham
INDEPENDENT FUNERAL SERVICE

**LOCAL INDEPENDENT
FAMILY FUNERAL SERVICE**

24 Hour Personal Service

01449 771666

The Nutshell, Milton Road South,
Stowmarket, IP14 1EZ

www.andrewbingham.co.uk

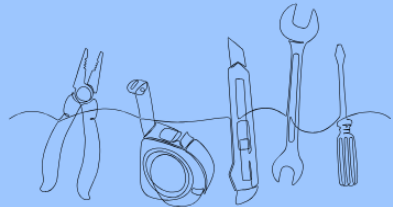


Golden Charter
Funeral Plans



Stephen Horrex
carpenter & joiner

HOUSE MAINTENANCE,
ROOFING, ARCHITRAVE,
PURPOSE-MADE DOORS & WINDOWS,
DOORS HUNG, WARDROBES,
CUPBOARDS, SKIRTING
FITTED KITCHENS,
PLASTERBOARDING



Telephone 01449 676 915

**JOHN BULL
MOTORS LTD**

PETROL AND DIESEL

MOT TESTING

SERVICING - REPAIRS

DIAGNOSTIC CHECKS

COLLECTION CAN BE ARRANGED

UNIT 7B

CHARLES IND. ESTATE

STOWMARKET

PHONE: 01449 774150

FAX: 01449 675898

**GIPPING
PRESS**

DESIGN • PRINT • LARGE FORMAT
MAILING • PROMOTIONAL GIFTS
SCANNING & GICLEE PRINTS

**Gipping Press
are proud
to print this
publication**

01449 721599

enquiries@gippingpress.co.uk
www.gippingpress.co.uk

The initiative has now being extended, with businesses across Babergh and Mid Suffolk also able to sign up to the scheme.

New REACT team now live The two-person "respond, enforce and clean team" - or REACT - has been set up to patrol litter hotspot areas in the Mid Suffolk District Council area. It will be funded by £360,000 from the council -owned Gateway 14 development. Introducing REACT operatives means reaction to incidents, such as fly tipping, and our scheduled works, aren't competing for resource and time. In the area of Mid Suffolk District Council there were 399 reported incidents, with the majority of them being on highways.

Food Museum in Stowmarket receives £3.9m from the Heritage Lottery Fund The Food Museum is now able to start a £5.5 million project thanks to funding from the Heritage Lottery Fund and Mid Suffolk District Council. The ambitious scope covers conserving and developing three historic buildings - the barn, the factory and the house and linking them together to create a coherent visitor experience. A good museum significantly benefits a town by boosting tourism, enhancing the local economy, fostering community development, and contributing to cultural enrichment.

Mid Suffolk Magazine A regular magazine released in September and February has been introduced to keep residents informed of what is going on in the district.

Mid Suffolk budget and Council Tax Mid Suffolk Budget Scope

In addition to the day-to-day provision of the current services and current activities the 2026/27 budget includes further funding for:

- Major implementation of food waste collection and better recycling
- Enhancements to our current depot in readiness for Better recycling
- Further support for recycling education
- Cost of living support and Council Tax Support scheme
- Support for our towns and rural communities outside of Stowmarket in the wider District
- Support for sports and leisure facilities in the wider district

- Sorting out various long standing property issues in the District
- Communities Infrastructure projects
- Leisure centre maintenance
- Stowmarket sports facilities - SHELF Project
- Support for Stowmarket regeneration
- Support for the Cosy Homes scheme which has been expanded to offer solar panels
- Funding for the Reach Retrofit Hub to be an advice centre for the district
- Grant funding for nature recovery and community biodiversity groups
- Support for new footpaths and cycle ways
- Completing the build of the Stowmarket Innovation Gateway
- Developing the skills offering for the Stowmarket Innovation Gateway
- Funding for disabled adaptations and the disability action plan
- Expansion of temporary accommodation to avoid homeless residents being put into bed and breakfast accommodation and save on costs going to private providers
- Use of Land Transfers and/or Capital Receipts to alleviate the pressure in the HRA
- Support for planning such as neighbourhood plans
- Support for local food production
- Support for local energy production

Mid Suffolk District Council is increasing Council Tax by 2.99%.

About 8% of the total Council Tax bill is attributable to Mid Suffolk District Council and this % has been reducing. For context for a Band D property the increase attributable to Mid Suffolk is about £5.23 per year or 10p per week.

If a swarm of honey bees lands in your garden this summer, don't panic!

Andy Wilks would be happy to collect them from you, if he is able. Contact him on 07793 394 600 (or via WhatsApp)



OHS Community Centre

OHS Fete will be held on Saturday 11 July at 2pm on the playing field.

Plans are underway for the fete with our usual attractions including:

Games	*	Tea tent
Lots of stalls	*	Central arena entertainment
Live music	*	Car boot pitches

There will be another **princess** and **superhero** competition, as well as a **cute dog** competition. Entries on the day.

We are planning on having a seconds clothing sale in the main hall.
Pitches £10.

Car boot pitches are welcome on the field. Pitches £10.

Business stalls are also welcome on the field. Pitches £20.

**If you would like to reserve any of the above,
please call or message Jackie on 07825 432985.**

We are always looking for help so if you can man a stall, help set up or pack away we would love to hear from you!

Where's Harley Oneshell this month?



Harley went to Harleston Plough Day on the Sunday. He got a picture with the local rural police officer. He didn't get arrested as he was well behaved for a change!

It was a lively day watching the tractors and chatting! Lovely tea and sandwiches

(Ursula made my yummy sandwich).

R S A PEST MANAGEMENT SERVICES

HAUGHLEY

Tel No: **01449-672083/Mobile 07745-771516**

GAME OVER

For

**Rats, Mice, Moles, Rabbits, Squirrels, Ants, Wasps, Flies, Birds,
Bees, Cockroaches, Bed bugs, Fleas, Woodworm etc..**

30 year guarantee available on timber treatments, damp proofing

Deer & Fox Management

Fully qualified and insured pest control

For a service you can rely on for effective control of farm, garden and households pests.



Members of the National Pest Technicians Association

Unmarked vehicles and discreet service

HAUGHLEY VETERINARY CENTRE

63 Old Street, Haughley, Nr Stowmarket
Tel: 01449 673366

A small friendly practice offering a full
medical and surgical service for
companion pets

Also at

**THURSTON
VETERINARY CENTRE**

Tel: 01359 232200

Opening times

Monday - Friday 8.30am - 6.30pm

Saturday 8.30am - 11.30am

Haughley Surgery

12pm - 3.00pm

Thurston Surgery

Please telephone to make an appointment

or visit our website

www.haughleythurstonvets.co.uk

**Fed up of running around
after your car?**

Why not give us the inconvenience
– it's part of our service

WE COLLECT & DELIVER

Servicing, Welding,
MOTs arranged

Air-conditioning recharged

General Repairs –

shocks, clutches, brakes etc.

All work guaranteed

S & P Mot-care

Est 1990

Contact: Shane

Tel: 01449 771102 or 07802 545737

**Personal Service at
Competitive Rates!**



Suffolk Macs

Mac and PC
repairs and maintenance for
business, education
and home users

www.suffolkmacs.co.uk

Tel: 01449 678577

Mobile: 07703 439117
enquiries@suffolkmacs.co.uk

CHIMNEY SWEEP

ECO SWEEP CHIMNEY SERVICES

- NEW POWER SWEEPING METHOD USED FOR A MORE THOROUGH CHIMNEY CLEAN THAN BRUSHES.
- INDUSTRIAL HEPA FILTERED VACUUM.
- FULLY INSURED.
- INSURANCE RECOGNIZED CERTIFICATES ISSUED.
- SPOTLESS, RELIABLE AND FRIENDLY SERVICE.
- ALL CHIMNEYS, WOODBURNERS, AGA, BOILER FLUES SWEPT.
- GUILD OF MASTER SWEEPS CERTIFICATED MEMBER.



ecosweep@live.com

TEL. 01359 232335



F. G. BROWN OPTICIANS

41 Bury Street, Stowmarket.

Tel:- 01449 612812/674030

As independent opticians we offer a more
personalised eyecare service that you can trust
for all the family including:-

Optomap retinal examination

Colorimetry

A wide range of competitively priced frames and spectacle lenses

Contact lenses

Prescription and Non-Prescription Sunglasses

YOUR SIGHT CARE IS OUR PRIORITY

COUNTRYSIDE, CONSERVATION & TREE SERVICES

Peter Kerry

📞 01359 230100
07792 995483

✉️ peterkerry2018@gmail.com



SPECIALISTS IN

Tree surgery
Hedge management
Patios/Paving
Resin bound driveways
Fencing

£5,000,000 public liability
insurance



For anything not listed above please do not hesitate to contact us to discuss

**PLEASE CONTACT US FOR A FREE, NO OBLIGATION
QUOTE**

Rushbrook's

— CHIMNEY SWEEP

Guild of Master Chimney Sweeps &
HETAS registered Chimney Sweep,
providing professional service to ensure
a clean, safe chimney for your home.

Services include:

Open fire, wood burners & Inglenooks swept
Stoves checked and serviced for efficiency
Birds nest removal

Safety Inspections and Smoke Tests

All work fully insured & certificates issued.

Contact Robert Rushbrook:

rushbrookschimneysweep@hotmail.com

07581 352772 or 01449 612296



Hillcroft House

Finborough Road, Stowmarket, IP14 1PW

Enjoy peace of mind and a sense of belonging at Hillcroft House. You can depend on our caring and compassionate team of specialist staff to cater for your every need.

With our round-the-clock residential and dementia care, you won't have to worry about a thing. Just sit back, relax and enjoy living in a 'magical' place.



Call us on **01449 708903** or
visit healthcarehomes.co.uk



OHS Women's Guild

On May 7th, 25 members met for our annual lunch at the Golf Club. Always a very popular meet-up, it gives us all a chance to relax, eat and chat - a good combination.

Our AGM is on May 21st, giving members a chance to have their say, and explore new ideas. This will be our 59th AGM, so the committee are starting preparations now, in readiness for our Guild's milestone 60th year in 2027 ...it doesn't seem any time at all since we were arranging our 50th, how time flies when you're having a good time!

Another very popular meeting on June 4th, when we ask for members to volunteer to arrange a 'Topsy Turvey' meeting, in which the tables are turned, and they take over, leaving the committee free to enjoy. Jo and Irene have offered for the last two years, with great success. They took up the challenge again this year it's guaranteed to be great afternoon, they always come up with something original.

Any queries, please contact either Chair Margaret 737602, or Gill, 736331.



Swift box update



Harleston parish chair' Andy Wilks has provided an update:

'We have had a fantastic response to our offer of swift box sites and I have supplied over 26 boxes to residents which we hope will be installed in time for the swifts return in May. '

If anyone else in Harleston would like a free swift box, please contact Andy Wilks via WhatsApp on 07793394600 or email and he'll get one to you: andy@greenfarmhouse.co.uk.

If you're interested in the Save Our Suffolk Swifts project, you can find out more here: www.suffolkwildlifetrust.org/swifts

Harleston Plough Day

You will have seen the Harleston Plough Day advertised in our April issue.

Marie Stone writes: What a fabulous weekend at the ploughing event in Harleston!

The sun shone making for a wonderful atmosphere, and the sounds of vintage machinery brought the whole village together for a truly special weekend.

There was nothing quite like hearing the old Field Marshall tractor being started up with its famous “pop pop” sound echoing across the fields while vintage tractors – and on Sunday a pair of magnificent horses worked the land in the traditional way.



With the sun beating down, it was a fantastic sight, and a reminder of our farming heritage.

The tea tent was very popular, serving delicious scones, an assortment of homemade cakes, and rolls, all enjoyed throughout the day.

The Women of Wartime stand, with Missie and Gladys, attracted lots of reminiscences, interest and conversation.

A very special thank you to Mark Armstrong for organising such a wonderful weekend, along with all the volunteers who gave up their time to help make the event possible.



The weekend not only brought the community together but also helped raise valuable funds (over £1000) for the Harleston Church thatched roof fund.



images with thanks to Peter Green & Marie Stone
Harleston Thatch Fund has to reach it's half way point of £40,000 before they can seek grant funding or sponsorship.

If you have any fundraising ideas, I'm sure the PCC would love to hear from you, ed.

Happenings in Harleston

LOTTERY Peter Edwards was the lucky winner last week. At last Peter!!

COFFEE CARAVAN The coffee caravan is back on the green, and this week, several of us braved the elements, (extreme cold and wind!!). Unfortunately we didn't stay the course, and had to disband early. Looking forward to warm sunny days ahead.

PLOUGHING MATCH Mark Armstrong recently hosted a ploughing match on his premises on Shelland Road. Both days were very well attended, and the weather was very kind, sunshine all the way. He put in a tremendous amount of work for many weeks before the event, which resulted in the amazing amount of £1,403 for our thatch fund, and we thank him for all his hard work (he is now recovering!). Mark would like to thank his family and many friends who helped before, and during the event.

ST AUGUSTINES Rev Rod has started a fund raising initiative by distributing £10 notes to all who think they may be able, by the Autumn, use their £10 to increase their stake, and make a healthy profit! Several of us have risen to the challenge, and the project is well underway. Its surprising how it has brought out the entrepreneurial spirit in us all.

COMEDY NIGHT Rod has persuaded his son Timothy, (an eminent entertainer), to provide us all with an evening of comedy. Please see the poster opposite, and please book tickets and bring your friends!

Forthcoming events for your diary:

JULY 5th ANNUAL CHURCH SERVICE ON THE GREEN
AUGUST 23rd PET SERVICE ON THE GREEN. (To be confirmed)

That's all for now...enjoy the sunny days ahead!

Ursula, 01449737845 / 8 Haughley Road

From the
Edinburgh Fringe

to

Harleston

via

Pettiward Hall,
Great Finborough
Tim FitzHigham

a

One Man Comedy Show

7.30 pm 19th June 2026

Tickets £10

Phone or text 07884334733

Stowmarket Eco Future Group



Has the recent space mission changed the way you look at the moon? Over the past few weeks, the night skies have been especially beautiful – inviting us to look up and reflect on the sheer vastness of the universe, and on our place within it.



The Artemis II astronauts spoke movingly about what it felt like to look back at Earth from space. One message was simple: “Trust us, you look amazing, you look beautiful.” Another reflected on our shared humanity: “Homo sapiens’ is all of us, no matter where you’re from or what you look like. We’re one people.” One astronaut even described Earth as a “spaceship” – our shared home, unique and irreplaceable, entirely dependent on how well we care for it.

I was reminded of this recently when I heard Chris Packham speak at a celebration marking 100 years of the Norfolk Wildlife Trust. His message was strikingly similar. Human beings are one species living on one planet, and the natural world pays no attention to national borders. What happens in one place affects us all. Chris spoke candidly about his reputation as an activist and extremist. He said he is prepared to absorb criticism for speaking out strongly on environmental issues if it helps create space for a much larger

Collection of hard to recycle items:
2-4pm at Red Gables on **14th June**.
9:30–11:30am at Market Place on **25th June**

Repair Café: 2–4pm on **14th June** - stowrepaircafe@gmail.com
stowmarketecofuturegroup.co.uk email: stowmarketecofuture@gmail.com

groundswell of moderate voices to say, “Yes – this matters to us too.” Chris was uncompromising about the urgent need to move towards renewable energy and transport, restore biodiversity, and protect clean water. Yet what stayed with me most was his optimism. His belief that meaningful change is still entirely possible – if enough people come together and hold decision-makers to account – was genuinely infectious.

Eco Cafe: We had trouble finding dates to meet but are happy to join the Green Party Socials held monthly at Fred’s Bar on the third Tuesday. 16th June and 21st July are the next dates.

HARD TO RECYCLE ITEMS ACCEPTED:

Coffee pods – plastic and metallic (not mixed), **fruit nets**, **pet food pouches** (empty, clean & dry), , **tetra packs** (empty, clean & flattened), **bicycle inner tubes**, **spectacles** and cases, **empty make-up containers**, **batteries**, **laptops** and **tablets** with their **chargers** (for parts), mixed **plastic & foil blister packs**. All-foil blister packs can be put in your home recycling (ideally bundle & wrap in a piece of foil rather than throw in loose).

Please take soft plastics to supermarket recycling points.

Thanks

Advertise your business here

For more information about advertising in the OHS Mag, please scan the QR code or email us at ohsmag@onehouseparishcouncil.gov.uk



Nature notes: Halfway there...

Longer days now are making the lawns grow quickly with the help of any rain that falls. 'Oak' trees were out before Ash, so—as the proverb holds—we are we will get a 'splash' not a wet summer.

Our box-tree bushes are under constant attack from box moths again. These larvae swiftly mature and usually have more than one generation in a year. The larvae have a big appetite and several instars (stages of



growth when they shed their skin), feeding together which often kills the host plant.

This recent Asian invader is thought to have been a stowaway on imported plants and, with the absence of its natural predators, it has thrived.

Many plant nurseries and garden centres do not supply box-tree bushes anymore and offer *Euonymus* as a replacement.

Butterflies appearing on the wing now include meadow browns and large skippers—usually the first of the June species—soon to be followed by Gatekeepers.

May saw the first damselfly and dragonflies and June should be a great time to see them not just near water but often along woodland rides and hedgerows hunting for insects.

Climate change is increasing the regularity of some migrant species, enabling some to become new colonists. You need a keen eye to identify them on the wing, but a good photo will help.

Dragonflies often have a favourite perch which they will return to.

A neat trick to get a photo is to put a stick in the ground near where they are flying, wait and hope!

Images show the box tree moth and the broad bodied chaser dragon fly, with thanks to Trevor Goodfellow.



For help identifying any wildlife email a photo to goodfellowtrevor8@gmail.com

Call for photographs

Thank you to those of you that have shared your pictures this month. If you have any shots depicting life in Onehouse, Harleston and Shelland, please send them via email to

OHSMag@onehouseparishcouncil.gov.uk

or via WhatsApp to **07775 924 457** - Thank you



Coffee Caravan

Dates for your diary

Onehouse 10am-12noon, Harleston 1pm—3pm

Monday 8th JUNE - Monday 13th JULY

Monday 10th AUGUST - Monday 14th SEPTEMBER

Monday 12th OCTOBER - Monday 9th NOVEMBER

Monday 14th DECEMBER

News from St. Johns

In June there is only one Service at St John's Church, Onehouse. That will be on the 14th June at 11.00am and will be the Patronal Holy Communion. It's the Churches Birthday!

Normally there are two Services in St John's each month, but there will be a Benefice Service at Gt Finborough on the 28th June and no Onehouse Service. Please join us if you can.

Following the Patronal Service on the 14th June, Sylvia and John Emsden have, again, kindly offered their garden at 22 Forest Road, Onehouse for a BBQ starting at 1.00pm. Everyone is welcome. The cost will be £15.

There will be BBQ food, including vegetarian and salads and puddings, but bring your own drinks. There will be a raffle and a quiz too.

To help with planning and preparing, we would like numbers attending by the 4th June please. Contact Sylvia on 01449 615592 or 07799404670 or Carole 01359 302271. Proceeds to Church funds.

An early note for your diaries with two dates to remember:

- The 'Harvest Supper' meal this year will be on Friday. 25th September, in Trinity Hall, at 6.30 for 7.00pm. Details to follow in the July OHSMag.
- The 'Christmas Fayre' will be held in Trinity Hall on Saturday 21st November, 10 til 12 noon. Details in the September OHSMag.

Letter from Combs Rectory

The month of June, as well as hopefully bringing warmer weather, tennis and the end of the exam period, also brings some notable saints festivals in the Christian calendar, in particular the shared festival of St Peter and St Paul on 29th June.

St Peter was also known as Peter the Apostle and Simon Peter. Originally a fisherman, he was one of Jesus's twelve apostles, and one of the first leaders of the early Christian Church. Peter appears repeatedly and prominently in all four New Testament gospels as well as the book of the Acts of the Apostles. According to Christian tradition, Peter was crucified in Rome under Emperor Nero after which he was venerated by the church as a major saint and as the founder of the Church of Rome. St Paul, previously called Saul of Tarsus, became commonly known as Paul the Apostle. He was a Christian apostle who spread teachings of Jesus in the first-century world. Generally regarded as one of the most important figures of the time, he founded several Christian communities in Asia Minor and Europe. Originally Paul was called Saul and lived as a Pharisee, participating in the persecution of the early disciples of Jesus. Whilst he was travelling on the road to Damascus to search out Christians he had what is commonly called a conversion experience. After this, Paul was baptised and he made three missionary journeys to spread the Christian message to non-Jewish communities throughout the countries of the western Mediterranean.

Both saints are associated with the creation of new deacons and priests within the church, which is why ordination services often take place the near to their feast day of 29th June. This year, these services will be in the cathedral at Bury St Edmunds on the 27th June and our curate, the Revd Andy Little, will be ordained as a priest! Revd Andy will then celebrate Holy Communion for the first time on Sunday, 28th June at our service at St Andrew's church, Great Finborough starting at 10am and to which all are welcome. A time for celebration indeed!

With blessings, Revd Sarah



The Combs and Finborough Benefice

Buxhall, Combs, Gt and Lt Finborough, Harleston, Onehouse and Shelland Services in June 2026

Rector: The Rev'd Sarah Jenkins, The Rectory, 135 Poplar Hill, Stowmarket IP14 2AY 01449 676065

Associate Priest: The Rev'd Canon Pauline Higham, The Rectory, Woodland Close, Onehouse IP14 3HL 01449 771791

Sunday Services

Please use this link for all services held on Zoom - Meeting ID: 470 378 1299 - Password: Benefice
<https://us02web.zoom.us/j/4703781299?pwd=doep7y6JYxv0lIXsxROxnbezlda9ME.1>

7th June: The First Sunday after Trinity

9.00 am	Holy Communion	Little Finborough
9.30 am	Morning Worship	Harleston
11.00 am	All Age Worship	Combs

14th June: The Second Sunday after Trinity

9.30 am	Holy Communion	Shelland
9.30 am	Holy Communion	Buxhall
11.00 am	Morning Worship	Great Finborough
11.00 am	Holy Communion	Onehouse

21st June: The Third Sunday after Trinity

9.30 am	Holy Communion	Harleston
11.00 am	Family Communion	Combs
6.00 pm	Evensong	Little Finborough
6.00 pm	Compline	Zoom Meeting

28th June: The Fourth Sunday after Trinity

10.00 am	Rev'd Andy's First Eucharist Benefice Holy Communion	Great Finborough
----------	---	------------------

Weekday Services

9.30 am on Wednesday	Holy Communion	Trinity Hall, Onehouse
10.00 am on Saturday	Morning Prayer	Zoom Meeting

*All Welcome! Whether you are a regular worshipper or a visitor to our churches this Sunday,
you will find a warm welcome at any of our services*



Stowmarket Bathroom & Kitchen Centre

01449 774900

www.stowmarketbathrooms.co.uk

Our New Trade Showroom is Now Open All Trade and Retail Welcome

“In 2025, we made the decision to replace our trade counter with a new showroom featuring a more basic, low cost bathroom range to complement our existing displays.

We will continue to stock a wide choice of plumbing spares, along with softener salt, as part of our ongoing commitment to provide essential products and support.”

Sean Plaskitt, Showroom Manager



**Please come and visit us
We are open Monday to Friday
8am to 5pm**

3 Mill Street, Stowupland, Stowmarket, Suffolk IP14 5BJ



OHS Fete

Saturday 11 July from 2pm to 10pm
Onehouse Playing Field

Free entry

Live music

OHS Has Talent – if you have a musical talent contact us!

All day bar

Grand prize draw

Games for all ages

Darts competition – entry on the day

Cute dog competition – entry on the day

Princess/Superhero competition – entry on the day (all ages)

Car boot pitches

Business stall pitches

Cakes and donations of bottles

Bring cash on the day!

For the following, please call Jackie on 07825 432985

To enter OHS Has Talent or for a car boot or business pitch

If you are unable to attend but would like to enter our Grand Prize Draw

**We are also looking for donations of cakes and bottles,
alcoholic and non-alcoholic and tombola prizes**