

In this issue

- Annual Parish Assembly 1
- Film club 1
- Horticultural society 2
- Coffee morning..... 2
- Cliddesden Players "Quiet On Set" . 3
- Village hall news 3
- Wine walk save the date 4
- 100 Club 4
- Women's Institute 5
- Parish council pages 6
- Eater Garden 8
- Farleigh parish playgroup 8
- Youth group 8
- Children's singing group 8
- Brownies and Guides..... 9
- Primary school 150th birthday 10
- Village directory 11

AN INVITATION TO THE ANNUAL PARISH ASSEMBLY FRIDAY 8th MAY at 7.30pm




to be held in the Cliddesden Village hall
Doors open 7pm refreshments available

The Annual Assembly is an opportunity for all residents of the Parish to discuss local issues; to give feedback, raise questions, and suggest projects.

More details and agenda on page 6

All of the Parish Council look forward to seeing you then.

Social and Entertainment Club Cliddesden Millennium Village Hall

'You'll be sure of a warm welcome and a great evening'

The bar opens at 7.30pm and we start at 8pm. There is an intermission half way through during which refreshments and drinks at the bar are available at very low prices. Admission is only £2 per person. **Please note we work on a cash only basis.**



THIS IS THE MAY FILM WHICH WE ARE SHOWING ONE WEEK EARLIER DUE TO THE LOCAL ELECTIONS.

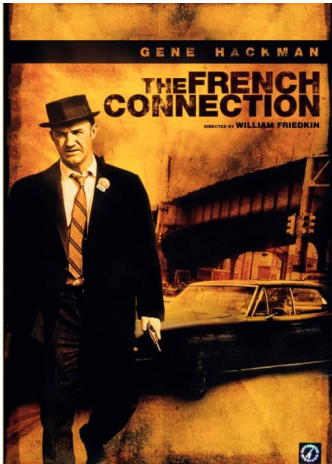
PLEASE NOTE DUE TO ITS LENGTH THIS FILM, WILL START AT 7.45PM WITH A SHORT INTERVAL.

Thursday
30th April

The French Connection

1971
101 minutes

Certificate 18



A determined narcotics detective 'Popeye' Doyle and his partner work relentlessly to infiltrate and dismantle a sophisticated international drug trafficking operation. The story follows their intense pursuit of a ruthless cartel that is flooding New York City with heroin, leading to a dangerous and gritty confrontation with formidable adversaries.

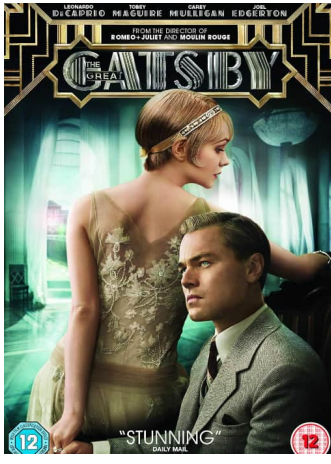
**Starring Gene Hackman, Fernando Rey,
Roy Schneider, Tony Lo Bianco, Marcel Bozzuffi,
Bill Hickman and Eddie Egan**

Thursday
4th June

The Great Gatsby

2013
142 minutes

Certificate 12



Nick (Tobey Maguire) lives next door to a mysterious, party giving millionaire Jay Gatsby (Leonardo diCaprio) and across the bay from his cousin Daisy (Carey Milligan) and her husband Tom Buchanan (Joel Egerton). Tom has a penchant for wild parties and wild women. Nick is drawn into a world of the super rich, their illusions, lovers and deceits.

**Starring Leonardo diCaprio, Tobey Maguire,
Carey Milligan, Joel Egerton,
Isla Fisher and Jason Clarke**

Cliddesden, Farleigh Wallop & Ellisfield Horticultural Society

The three villages Gardening Club

Chairman: Seumas Foster tel: 07768443658 email: seumas@cropfosters.co.uk
Secretary: Marilyn Smith tel: 462584 email: willow.ms@btinternet.com



Seeds growing, and soil is suitable for planting

We have had a busy April. The weather has been its predictably variable self. Some days are really warm, and then a cold wind to remind us not to get too excited. The lawnmowers and strimmers are getting back to work as well.

The Plant Sale May 10th on the patio of Cliddesden Village Hall

This is one day when we really do want a dry day. All visitors are welcome and donations of plants, seedlings, or even horticultural sundries would be welcome. We always have plenty of tomato seedlings of different varieties, and they all find a home. Everyone has a poor result with germination sometimes, eg. old seed, and you can get seedlings to replace them.

There will be plants you have probably not seen before, which will spark your curiosity and imagination, and you will be able to get something new to try in your garden.

Come and have a browse, the chance is that you will see something interesting. Maybe you will have found the perfect plant for the corner you didn't know what to do with. Gardeners are optimists!!

Visits

Now spring and summer are here we will be looking forward to our visits, the details of which will be coming soon. Information will be sent to you as soon as final arrangements have been made.

The Spring Show was held on March 29, having been brought forward to allow for the early spring. Our main exhibits for the Spring Show are the daffodils and the earlier show date really worked as the blooms were all very good quality.

Our thanks to everyone who exhibited, made cakes or



contributed in any way to make the Show a success.

Spring Camassia on Display

Along Basing View roadside between the ring road and the roundabout, there is a fabulous planting of Camassia which gives a great display while they are in flower. It's a delight to see them after the daffodils, and huge thanks to whoever did that inspired planting.

Seumas Foster

Cliddesden Millennium Village Hall



2026



Please come along to have a natter and make new friends, browse the second-hand book stall, and of course enjoy a good cuppa and a slice of cake!

The 100 club is also drawn here each month.

We have table tennis available and all the equipment you will need if you fancy a game.

We meet on the second Monday morning of each month, from 10.30 – 12 noon.

Hope to see you there, all ages are welcome.

Next date: **Monday May 11th at 10.30am.**

Gill (01256 359413)



The Cliddesden Players' 2026 Summer Production

“Quiet On Set”



A comedy drama written by Emily Golborn

Cliddesden Village Hall - Friday 12th & Saturday 13th June 8pm

News anchor Ken Kinnell is a legend of news broadcasting and a national treasure. But behind the scenes he's misogynistic, arrogant, and unfaithful. His office dalliances have left very few women untargeted, but he has so many connections in media that his public image stays squeaky clean.

His Co-anchor, the glamorous Stacey Fontaine, would be delighted by the downfall of her partner, mainly so that she can step into the spotlight. Ken's other colleagues all have personal grievances against him, so when there's sabotage of the teleprompter, script tampering, and stolen property, everyone is a suspect. The station manager and the Director desperately try to keep things on track as the funny consequences play out.

Tickets £12.

Advance payment is required for Play or BBQ – via cash, cheque or BACS (preferred option) with details given at time of booking.

(Please advise if wheelchair user or mobility difficulties)

Saturday 13th BBQ 6.00 – 7.15pm (burger or hot dog +

salads) £6 per serving. BBQ token to be issued at check-in desk.

Please state on booking if vegetarian option required. Unfortunately, we cannot offer options to cater for allergies, please advise if there are any concerns. Special requests cannot be made on the day.

Contact: Angie on 01256 475848 or email events@cliddesdenhall.org.uk

Licensed Premises. We prefer to operate a CASH bar and refreshment service to limit card payment transaction fees.

Refreshments.....Prosecco.....ice creams!

If you can help, even for an hour, with stage set-up the previous weekend 6 -7th June, then please get in contact.

We need more volunteers to cover all the jobs that creating the set involves!

New faces would be most welcome and appreciated.

Village Hall News

cliddesdenhall.org.uk
[facebook.com/CliddesdenVillageHall](https://www.facebook.com/CliddesdenVillageHall)



I hope that you all had an enjoyable Easter and that the weather is kind to us for the two Bank Holidays this month.

The first four months of the year have proved to be eventful on the Hall's maintenance side. These events, given its age, were to be expected, but not wanted! This has necessitated the replacement of the original oil-fired boiler, and the provision of a new water softener, both of which had reached the end of their operational life. In addition, the ongoing uncertainty of the oil market resulted in a speedy reaction by Julie James to replenish our oil storage to mitigate against further oil price increases and secure the Hall's operation through to the Autumn.

In my February report, I advised that the Trustees were planning further upgrades to the Hall and its amenities during the summer, and I can now confirm our plans.

On Monday 3rd August, the Hall will be closed for a week to allow refurbishment of the entrance foyer to commence. This will involve dry lining and painting of some walls, works to the existing ceiling, incorporating new lighting, and the installation of a new floor and matwell area. Partial access will be available for the use of the

Hall during w/c 10th August, with temporary access arrangements in place to allow the foyer works to continue.

I am pleased to report the Parish Council have agreed to make a considerable financial contribution towards the cost of these works and the Trustees wish to record their gratitude for their kind support.

In addition to the above, the Trustees have now agreed to invest in the provision of new garden furniture, suitable for use on the south east patio or, when weather conditions allow, on the South Lawn. A new shed is to be erected behind the Annex building to provide the safe storage of the tables and chairs.

These continue to be exciting times for the Hall and would like to reiterate the request I made in my March 2026 report. Trustees would like to improve the Hall's communication and social media presence. The aim is to promote its amenities, its use, and the various activities taking place within it. We would be pleased to hear from anyone skilled in this area, who is able to spare a few hours a month to help us expand our presence.

Les Smith 18th April 2026

www.cliddesdenhall.org.uk
[facebook.com/CliddesdenVillageHall](https://www.facebook.com/CliddesdenVillageHall)
LJChairVH@outlook.com
M: 07973 922560



ST LEONARD'S CLIDDESSEN: SAVE THE DATE!!!

WINE

11th JULY 2026

WE WILL BE IN TOUCH SHORTLY WITH THE THEME AND FURTHER DETAILS!

Please contact John or Miche Donaldson on
07770 950111
or 07984 077555
or
johnandmiche@yahoo.com
for more information

In aid of church funds




100 Club



Hello all 100 Club members.

Thank you for your support of Cliddesden Village Hall through your membership of the 100 Club and well done to all the lucky winners. If you have not yet confirmed and paid your subscription for 2026 please do so **PROMPTLY** so that we are able to include everyone in the draw and calculate prizes.

Membership is only £12.00 per year, per number, no limit per household.

For those of you with internet banking you can set up a standing order or make one off payments to the account details listed below. Please ensure that you email me

when you make a payment so that these can be tracked. Cheques should be made payable to 'Cliddesden Village Hall'. You can hand them or cash to Angie Fewster, Ridgewood House, Farleigh Road; Julie James at Leaview House, 10 Hackwood Lane or myself Rose Beevers at Church Farm Cottage, Church Lane.

New members are always welcome – just fill in the form below or send the details requested in the form to 100club@cliddesdenhall.org.uk.

April's draw will take place in May when we have confirmation of numbers.

Thanks again for everyone's support.

Rose Beevers
[01256 475944, 100Club@cliddesdenhall.org.uk](mailto:100Club@cliddesdenhall.org.uk)

CLIDDESSEN VILLAGE HALL '100 CLUB'

Registered by Basingstoke and Dean Borough Council for the purposes of Section 5 of the Lotteries and Amusements Act, 1976
Promoter: Rosemary Beevers, Church Farm Cottage, Cliddesden, RG25 2JQ. *Registered Charity No 257526*

Name: _____

Address: _____

Tel No: _____

Email: _____

No of memberships Tick here if new membership Amount £

Method of payment Electronic Funds Transfer (preferred) Cheque Cash

I give permission for my name, address, telephone number and email address to be held by Cliddesden Village Hall 100 Club and used solely for the purpose of communicating with me with regards to the 100 Club

Your bank details for electronic payment of winnings (optional)

Account Number Sort Code - -

Cliddesden Village Hall bank details for Electronic Funds Transfer or setting up a Standing Order on-line:

ACCOUNT: CLIDDESSEN VILLAGE HALL
BANK: LLOYDS TSB, WINCHESTER ST, BASINGSTOKE
SORT CODE: 30-90-53 ACCOUNT No.: 01452048
REFERENCE: (your surname)

Please contact the 100 Club Secretary for a Standing Order Form if on-line set-up is not possible.

Please return the above form to: Rose Beevers, Church Farm Cottage, Church Lane, Cliddesden, RG25 2JQ



CLIDDESSEN

On Monday 20th, 14 members attended our April meeting.

Janet welcomed us all and then gave out a few notices and apologies received from Rosemary. We all sang Happy Birthday to Tricia to celebrate her birthday today.

Suzanne then followed by giving us the Treasurer's report and taking any questions, as she is unable to attend the AGM.

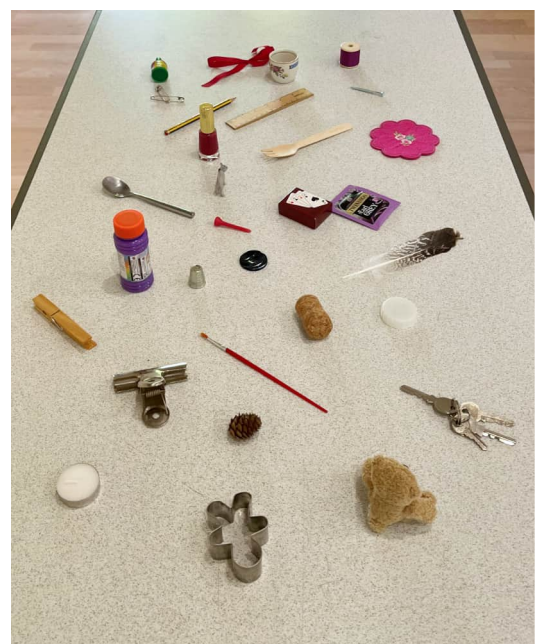
Once all business was finished, we gathered into small groups to complete a quiz Monica had prepared for us, whilst eating sausage baps. Jenny was great at this and answered the most questions correctly.

After we had finished the quiz, Suzanne prepared another quiz for us. This time it was a memory game. She placed 30 items onto a table and gave us 5 minutes to remember them before she recovered the items up and we then had to write down as many as we could remember. Most of us remembered between 15-19 of the items, which we all agreed was good. I think having the ice creams might of helped.

The meeting ended with everyone saying how nice a morning they had.

Our next meeting is our AGM on Monday 18th May at 10.30am.

Caroline Poulter





The next Parish Council meeting is the AGM at 7.30pm on Tuesday 5th May in the Village Hall meeting room. Everyone welcome.

TO ALL CLIDDESSEN RESIDENTS
PLEASE JOIN US FOR THE
ANNUAL PARISH ASSEMBLY
FRIDAY 8TH MAY AT 7.30 PM

in the Cliddesden Village Hall

**Doors open 7pm for an informal
half hour, a chance to chat**

The Annual Assembly is an opportunity to discuss issues relating to the Parish; to give feedback, raise questions, and suggest ideas.



AGENDA IN BRIEF

Times intended as a guide only

- 7.30pm 1. Chairman's welcome
2. Police update from PCSO Andy Jones
3. Minutes of the 2025 Parish Assembly – recap
4. Key changes in our Parish
- 8pm 5. UPPER SWALLICK AND INFRASTRUCTURE
Q & A to follow
6. Parish Council's focus
- 9pm 7. OPEN SESSION Q & A
- 9.30pm *Thank you and close*

*We look forward to seeing you all
Cliddesden Parish Council*

The Parish Council would love to hear your questions in advance. Please do share any and all questions and we will answer as many as we can on the night or email you back if you cannot attend the Assembly. Please email

Nicola.barnes@cliddesdenparishcouncil.gov.uk Thanks in advance.

PARISH PLANNING APPLICATIONS

26/00710/HSE and **26/00711/LBC** (Validated 02 April) Old School House, Farleigh Road. Erection of two-storey rear and single storey side extension, with habitable space within the roof.

26/00632/HSE (Validated 25 March) 3A Greenlands Nursery, Hackwood Lane. New detached garage.

26/00552/PIP (Pending 18 March) Land South of Newland Lodge, Woods Lane. Permission in Principle for erection of max four detached single dwellings and associated access.

25/01313/OUT (Pending 27 May) Land North of Bramble Bank, Farleigh Road. Outline, with all matters reserved save for access, for up to 17 dwellings etc.

24/00617/RET (Pending 17 June 2024) 1A Millars Cottages, Station Road. Revised parking and landscaping, ref 20/00390/FUL (retrospective).

PARISH PLANNING APPEALS

6007440 Appeal in progress re Land West of Millars, Station Road. Outline application with some matters reserved (appearance and landscaping) for the erection of 4 no. dwellings.

6001439 Appeal allowed 01 April 2026 Land South of Woods Lane. PIP for up to four dwellings and associated access.

NB To comment on an Appeal with new seven-figure refence starting 6... these can be found on the new system at <https://appeal-planning-decision.service.gov.uk/comment-planning-appeal/enter-appeal-reference>

PARISH TREE APPLICATIONS

T/00166/26/TCA (Validated 10 April) Wheat Glade House Woods Lane. T1 Sycamore; reduce overhang to near boundary. T2 Horse Chesnut; reduce lateral branches over lawn by 1m.

T/00134/26/TCA (Validated 12 Mar) 17 Southlea. T1 Lime. Reduce to previous pollard points leaving height at approx 6m and spread at approx 3m.

WINSLADE APPLICATIONS ONGOING

25/01235/FUL (Pending 01 July) The Firs, Alton Road. Material Change of Use of Land to a use of Gypsy/ Traveller site comprising two pitches with the siting of one Mobile Home, one Touring Caravan, and one Dayroom per pitch, and alteration of access onto the A339. (Part retrospective).

25/00200/LBC (Pending 06 Feb) and **25/00199/FUL** (Pending 28 May) Hackwood House and Park. Conversion from residential use to hotel and ancillary hotel use.

REPORTING POTHoles AND OTHER ROAD PROBLEMS

Note from County Councillor...

'The best way residents can help is to report, ideally with photos, via the County Council website. (Reporting via Fix my Street will reach us, but has no two-way communication, no way to update or track progress.)

www.hants.gov.uk/transport/highways/report-a-problem

'To particularly recommend the OurHants app which will upload reports and photos directly to the website

www.hants.gov.uk/aboutthecouncil/ourhants

'Also to bear in mind can claim for repairs for a tyre or wheel damaged due to a pothole on local roads; County are liable.'

RIGHTS FOR RIVERS Basingstoke & Deane

BDBC Cabinet of 10 March 2026 agreed: 'To adopt the declaration on the Rights of Rivers and note the actions taken to date, including embedding protection and enhancement of the water environment into key strategies and into the emerging Local Plan.'

And further noted: The Rights of Rivers declaration is helpful in providing the Council's formal view on the importance of water courses in the Borough which will help to inform and guide key strategies in the future. The declaration highlights the need to protect and enhance water courses through the various strategies and actions in the control of the Council alongside those duties that rest with others.

DECLARATION FOR ADOPTION

Declaration on Rights of Rivers in the Borough of Basingstoke & Deane

Humans depend on our rivers to provide clean water for drinking and sanitation, fertile soil, and regeneration but rivers also support an extensive diversity of species and ecosystems and play a vital role in the functioning of the Earth's continuous water cycle. Rivers are also one of the largest natural carbon-transport systems on our planet, moving land-based carbon to be stored in the oceans and providing temperature regulation functions.

This Council recognises that rivers are vital to the ecological health, cultural heritage, and future sustainability of Basingstoke and Deane. In the Borough of Basingstoke and Deane, these waterways also include our globally rare, ecologically fragile and irreplaceable chalk streams. The Borough contains the springs and headwaters of the River Loddon and River Test as well as important tributaries of the Itchen and the Kennet. Rivers and the wetlands they create give many communities a sense of place and identity. Many towns exist in their place because of a river. Despite this, rivers across the UK, and here in Basingstoke and Deane, face increasing pressures from pollution, over-abstraction, habitat degradation, and climate change. Communities increasingly demonstrate that they care for their rivers and concern grows for the poor state of our rivers' ecological health, which increasingly impacts public health.

To address these growing threats and to uphold our responsibilities to future generations, this council resolves to formally recognise Rights of Rivers, drawing inspiration from the Universal Declaration of Rights of Rivers.

1. The Right to Flow – to follow natural and seasonal flow patterns.
2. The Right to Perform Essential Functions within its Ecosystem – to sustain the hydrological and ecological processes that underpin the health of the waterways and landscape.
3. The Right to be Free from Pollution.
4. The Right to Feed and Be Fed by Sustainable Aquifers and other freshwater sources – to be replenished by, and to replenish, groundwater systems without unsustainable depletion.
5. The Right to Native Biodiversity.
6. The Right to Regeneration and Restoration – to recover from damage – including through active protection, remediation and investment in habitat restoration.

This Council therefore declares that:

1. The intrinsic Rights of Rivers within the jurisdiction of Basingstoke and Deane Borough Council will be acknowledged.
2. It will work with community groups, river trusts and environmental experts to identify and support the practical recognition of these rights.
3. It will support local initiatives and citizen monitoring efforts that protect and restore river health, such as citizen science water testing, riparian buffer planting, natural flood management and creating wildlife corridors.
4. It will embed river rights principles into council policies, where appropriate, particularly those concerning planning, development, land use, water quality, water management, and biodiversity.
5. It will commit to Council projects and strategies taking account of the principles of Rights of Rivers and chalk streams taking appropriate measures to protect these ecosystems and delivering enhancements where possible.
6. It will advocate to national and regional bodies, including the Environment Agency, the adoption of river rights frameworks and enhanced protections for our chalk streams and freshwater ecosystems.



Skylark (*Alauda arvensis*) © David Tiplin/2020VISION www.hiwwt.org.uk

Spring's song in the sky

Often heard long before they are seen, skylarks fill open fields and grasslands with a joyous, bubbling melody. Males rise high into the sky, sometimes 100 of metres above the ground, singing continuously while hovering or slowly circling. These flights serve both to attract a mate and to mark a breeding area.

Skylarks are omnivorous, feeding mainly on seeds, grains, and small invertebrates. In spring and summer beetles, caterpillars and spiders (for eg) become a key part of their diet, providing protein for growing chicks.

Their reliance on open farmland, grassland, and heathland means that habitat loss and intensive agriculture has a major impact on populations. Research shows 66% of ground nesting birds in the UK are in decline.

Skylarks are streaked brown and buff above, with pale underparts – colouring which provides excellent camouflage – and a short crest that can be raised when the bird is alert.

Females build shallow nests hidden among grasses, laying three to four eggs. Chicks grow quickly and leave the nest within a couple of weeks, allowing some pairs to raise multiple broods during the season.

Like all ground-nesting birds they are very vulnerable to disturbance, for example from dogs. Even if dogs don't harm eggs and chicks they may cause adults to abandon their nests.

Hampshire & Isle of Wight Wildlife Trust is advising dog owners to help by keeping pets on short leads, especially from March through July when birds are breeding. The Trust works with farmers, landowners, and communities to protect open grasslands and farmland, helping skylarks perform their iconic song flights for generations to come.

To support local wildlife and to help give nature a wilder future, please consider becoming a member of the Trust. hiwwt.org.uk/join-today or call the membership team 01489 774408.

Helen Skelton-Smith,
Communications Officer

Easter Garden

St Leonard’s hosted members from Otters Nursery, Cliddesden Primary School and James’ Place to create an Easter Garden together. It was wonderful to welcome members from our community into our church, and the garden they created together is beautiful. Thank you!



Farleigh Parish Playgroup



Cliddesden Millennium Village Hall

Friday Mornings 11am-12noon Term Time

1st, 8th, 15th & 22nd May (closed for half term on 29th May)

5th, 12th our Teddy Bears picnic at St Leonards,

19th & 26th June

0 - 4 years old and their grown-ups. A warm welcome awaits you and we look forward to you joining us for a fun and happy time

Cost: £3 donation per family

Melanie: Qualified in early years (07833 528040)
Claire: Qualified teacher (07757 498653)



ST LEONARD'S CHURCH

YOUTH GROUP

AGES 10-14

12 NOON-1.30PM

8TH MARCH 19TH APRIL 10TH MAY
SECOND SUNDAY OF THE MONTH

ST LEONARD'S CHURCH, CLIDDSDEN

St Leonard's

MINOR KEYS

A CHILDREN'S SINGING GROUP

3.45-4.30pm
EVERY FRIDAY
ST LEONARD'S CHURCH



We're excited to tell you about everything we got up to last term!

Programme Activities

We voted to take on the 'Folklore' interest badge. After finding out about all sorts of mythical creatures, we got to design our own by mixing up parts of different animals. We had a walking shark, a flying cat, and a 'Butterpig' - can you guess what we mixed there?

Part of the badge asked us to find out about local, national, and global folklore. We explored the Mermaid of Nately as our local tale, the Loch Ness Monster for national folklore, and the story of the Japanese Kitsune for our global myth. We loved putting on some performances of these tales, in panto fashion!

To finish the badge, we learned about the history of the Brownies, creating some new traditions as we enrolled our newest Brownie, and newest Leader (Meerkat) into the unit.



Out and About

We had some fantastic meetings out and about. We went to the new Superbowl in the town centre for a game of bowling. It was so fun to help the younger girls learn to bowl, and we especially liked taking team photos to go on the screen above our lane.

In March we took a trip to Eastdrop park. As well as enjoying scavenger hunts and some time in the playground, we waited until dusk to do some bat watching. We couldn't believe how many bats we saw!

Other Fun Stuff

Guiding and Scouting celebrate World Thinking Day on the 22nd February each year. This year was the centenary celebration, and we invited other Brownies to join us for an evening of global activities.

We joined in with the RSPB's Big Garden Birdwatch, spending some time watching the birds in our gardens and submitting the results online.

During one of our meetings we created a mini marketplace, with each pair of girls creating a stall with things to sell. We then were able to use 'Brownie Bucks' to shop at the other stalls and buy some handmade creations.

We had a DIY evening, where we got to use hammers and screwdrivers!



The highlight of the term was definitely our 'Amazing Inventions' sleepover. We learned about important female inventors, made mini robots, and took on the egg-drop junk modelling challenge, all before putting our pyjamas on, having a hot chocolate, and hopping into bed!



Awards

Congratulations to Darcey who earned her Brownie Bronze Award, for completing one third of the Brownie programme.

What's coming up?

This term we've got lots planned, such as a trip to the Winchester Science Museum, lots of badges and games, and a joint event with other Guiding members where we'll get to enjoy rock climbing, archery, zorbing, and much more!



Cliddesden Primary School 150th Birthday Celebration



To all members of the Cliddesden Community

We would like to invite you and anyone who attended Cliddesden school in the past to join us for some birthday celebrations at 14:00 on the school field.

We hope to have a special visitor and the children will be singing and performing some country dances.

Cakes and tea will be on sale after the performances.

Please bring picnic rugs and chairs to sit on and relax in our rural setting.

The children will have a stall with items to purchase so please bring some small change and help support the school.

Thursday 21st May at 14:00 on the school field

In the event of inclement weather, the event will be re-scheduled for Friday 22nd May.

The afternoon event will be cancelled if both days are wet as we are not able to accommodate large numbers in the school hall.

Cliddesden Primary School Issues Call for Memories to Mark 150th Anniversary

Cliddesden Primary School is proud to announce it will be celebrating its 150th anniversary in 2026. To honour this landmark milestone, the school is launching a community-wide appeal for past pupils and staff to share their stories, photographs, and memories of life at the school over the decades.

First opened in 1876 to serve the local village, the "school on top of the hill" has been a cornerstone of the Cliddesden community for a century and a half. From the days of Victorian slates to modern digital classrooms, the school has seen thousands of children pass through its doors.

"We are incredibly proud of our long history and the role we play in the lives of local families," said Mrs Larissa James, Interim Headteacher at Cliddesden Primary School. "As we prepare for our 150th celebra-

tions, we want to hear from those who were there—whether you attended in the 1950s or the 1990s. We hope to compile these memories to show our current pupils how school life has changed and stayed the same."

The school is particularly interested in:

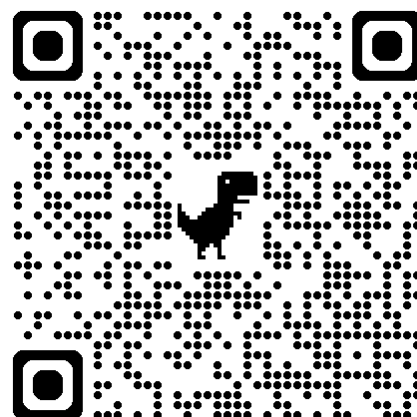
- **Old photographs** of the building, playground, or class groups.
- **Personal anecdotes** about favourite teachers, school dinners, or playground games.
- **Memorabilia** such as old school reports, certificates, or uniforms.

Submissions will be used as part of a special anniversary exhibition and shared with current students to bring the school's rich history to life.

How to get involved:

Past pupils and staff can send their stories and scanned photos to *ad-*

minoffice@cliddesden.hants.sch.uk or by post to the school. Please include your name and the years you attended, and what you are currently doing now, so that pupils can have an understanding of where their education can take them! Alternatively, please submit your stories via *this Google form*, or scan this QR code:



VILLAGE DIRECTORY

POLICE	PCSO Andy Jones (Basingstoke Rural South) <i>andrew.jones.13301@hampshire.pnn.police.uk</i>	07775 542 021
NEIGHBOURHOOD WATCH	Simon Barker <i>sibarksy@hotmail.com</i>	07732 100 990
PARISH COUNCIL	<i>www.cliddesdenparishcouncil.gov.uk</i> Susan Turner (clerk) <i>clerk.cliddesden@gmail.com</i> Alan Tyler (chairman) <i>alanbtyler19@btinternet.com</i> Mark Gifford <i>m.gifford1@outlook.com</i> Dave Rudge <i>dave.rudge@cliddesdenparishcouncil.gov.uk</i> Nicola Barnes <i>nicola.barnes@cliddesdenparishcouncil.gov.uk</i> David Raggett <i>david.raggett@cliddesdenparishcouncil.gov.uk</i>	07515 777 060 460 425 07504 104 621 07813 070 261
TREE WARDEN	Alison Mosson <i>alison@abe.co.uk</i>	07721 046 146
WARD COUNCILLORS	Onnalee Cubitt <i>cllr.onnalee.cubitt@basingstoke.gov.uk</i> Kate Tuck <i>cllr.kate.tuck@basingstoke.gov.uk</i> Sheena Grassi <i>cllr.sheena.grassi@basingstoke.gov.uk</i>	07762 067 411 07762 067 411 07561 060 596
COUNTY COUNCILLOR MEMBER OF PARLIAMENT	Juliet Henderson <i>juliet.henderson@hants.gov.uk</i> Alex Brewer MP <i>alex.brewer.mp@parliament.uk</i> House of Commons, London SW1 AOM	07738 289 849
MILLENNIUM VILLAGE HALL	<i>www.cliddesdenhall.org.uk</i> Leslie Smith (Chairman) 3 rd alarm contact Angie Fewster (Vice Chair) 2 nd alarm contact Ken Rampton (Caretaker) 1 st contact if alarm goes off Pat Rampton (Lettings Secretary) <i>bookings@cliddesdenhall.org.uk</i> Jo Capehorn (Secretary) Julie James (Treasurer)	07973 922 560 475 848 461 034 461 034 07528 856 157 363 753
NEIGHBOURHOOD PLAN	<i>www.cliddesdennp.wixsite.com/cliddesdennp</i>	
CLIDDESSEN COMMUNITY CONSERVATION GROUP	<i>cliddesdenconservation.org</i> Alison Mosson (Chairman) <i>alison@abe.co.uk</i> Angie Fewster (Secretary) <i>angie@fewster.me.uk</i>	07721 046 146 475 848
JOLLY FARMER	<i>thejollyfarmercliddesden.co.uk</i> <i>theJollythai@gmail.com</i>	358 288
CLIDDESSEN PRIMARY SCHOOL	<i>www.cliddesden.hants.sch.uk</i> Kenneth Davies (Headteacher)	321 571
1st CLIDDESSEN BROWNIES & GUIDES	Hayley <i>hayley-scott@live.co.uk</i> Louise	07740 116 853
FARLEIGH PLAYGROUP	Claire Nunn Melanie Gill	477 197 07833 528 040
ST LEONARD'S DISTRICT CHURCH COUNCIL	<i>www.farleighcandoverandwield.org.uk</i> Rectory: Revd Jennifer Wright <i>rev.jenn4@gmail.com</i> Peter Raine (Church Warden) <i>peter.c.w.raine@btinternet.com</i> Val Gofton-Salmond Julian Nunn	593 263 381 221 474 425 477 197
FILM CLUB	Diane Rampton <i>dianerampton@btinternet.com</i>	467 533
HORTICULTURAL SOCIETY	Seumas Foster (Chairman) <i>seumas@cropfosters.co.uk</i>	
WOMEN'S INSTITUTE	Janet Fagg (President) <i>jkfagg@gmail.com</i> Pat Rampton (Vice President) Julia Ross (Secretary) <i>cliddesdensec@hampshirewi.org.uk</i>	461 034
CLIDDESSEN & FARLEIGH WALLOP EDUCATIONAL TRUST	Vicky Tibble <i>Vicky.tibble@outlook.com</i> By text to: (Secretary & Treasurer) <i>admin@portsmouthestates.co.uk</i>	07552 927 692
AGE CONCERN	The Orchard, White Hart Lane, Basingstoke RG21 4AF <i>reception@ageconcernbasingstoke.freereserve.co.uk</i>	423 874
B/STOKE ASTRONOMICAL SOC HILL & DALE	<i>www.basingstokeas.org.uk</i> Jean Frost (Editor) <i>hillanddaleeditor@gmail.com</i> Ben Maunder (Distributor)	327 859
VILLAGE ARCHIVE	<i>www.cliddesden-archive.uk</i> David Brown <i>dave@cliddesden-archive.uk</i>	
VILLAGE NEWSLETTER	Editor: David Brown Copy date 20th preceding month to: <i>bootofthedailybeast@gmail.com</i>	
CLIDDESSEN CHAT	<i>www.facebook.com/groups/cliddesdenchat</i>	

THE CLIDDESSEN PLAYERS PRESENT

QUIET

ON SET

THE WEATHER FORECAST

FRI

SAT



12°



13°

Comedy written
by Emily Golborn

TICKETS
£12

Friday 12 &
Saturday 13 June 8pm

Saturday 13 June
BBQ from 6pm - 7.15pm
£6 per serving

Cliddesden
Village Hall

Licensed Premises • Refreshments

Tickets: Call Angie on 01256 475848 or email events@cliddesdenhall.org.uk