

BOMERE HEATH AND DISTRICT NEWS

April-May 2024



Cover pictures by Serena and Lochlan.




In this issue:

News from our community groups

Directory of advertisers

Becky's Butterfly Charity

Pet of the issue

 *Remembering Clare*

This edition (and previous ones) is also available online at
www.bomereheath.co.uk under 'Church, Groups and Clubs'.

GHC

Graeme Harris Contractors (1969)

**LOCAL PROPERTY RENOVATION SPECIALISTS
SINCE 1969**

INTEGRITY - CONSISTENCY - HONESTY

Bespoke garage conversions (study, gym, teens room, extra bedroom/en suite, "my space" etc.)

Exciting bathrooms, kitchens (free design service), roofing, carpentry, guttering/UPVC, hand finished hardwood/other floorings, windows, doors, bi-folds, painting, lead work, patios, brickwork, contract plumbing and electrics.

**All "In House" : Projects Managed : Innovative Concepts
Great value for money - Staff Qualified up to H.N.C. Level
Family Business with over 7,500 satisfied clients.**

WE ... are friendly, honest and will not pressure you
WE ... will give you immediate attention
WE ... will guarantee you a first class job
WE ... will supply superb references
WE ... will talk to you anytime about any building problem

Telephone NOW - you have nothing to lose.

WHY PUT IT OFF?

Tel: 01939 290293 Mob: 07850 797130 / 07974 650424

The Hollies, Bomere Heath

Long time Member Federation of Master Builders.
Certified by the British Board of Agreement.

THE OLD STATION



The AA 4 Star Rated Bed and Breakfast Accommodation in Shrewsbury, Shropshire

**Evening Meals Available – Free Onsite Parking – Free WiFi
– Dog Friendly- Free Breakfast**

The AA 4 star Old Station Guest House B&B is set in the heart of the Shropshire countryside less than 10 minutes drive via country roads from the historic county town of Shrewsbury, the central hub of Shropshire. It is situated adjacent to the Bomere Heath cricket ground with the village of Bomere Heath just a half a mile walk away with its local amenities of a small Co-op supermarket/newsagent, a post office, a hairdresser and a fish & chip shop. From here you can visit many places of interest in Shropshire, Cheshire and the Welsh Borders.

It is also located on the Shrewsbury to Oswestry bus route.

The Old Station Guest House B&B in Shrewsbury offer residents FREE PARKING for their large and small vehicles within the extensive grounds of The Old Station Guest House B&B. You could leave your vehicle in our car park and catch a bus from the end of the driveway.

This former railway station, built in 1847, has been lovingly renovated and enlarged to provide beautiful deluxe accommodation, having 6 unique en-suite guest bedrooms. Your chosen breakfasts and pre-ordered evening meals are cooked to order and are served in the dining room which was the original station waiting room and an extension onto the platform. The guest sitting room was originally the booking office. When the sun is shining you can also sit outside on the platform or one of the two patio areas.

From £80 per night and offering 10% discount from 3rd night.

THE OLD STATION

Leaton, Near Bomere Heath, Shropshire, SY4 3AP

Tel: 01939 290 905 **Mob:** 07714 068 305 / 07885 526 307

Web: www.theoldstationshrewsbury.co.uk

Email: langley.cm@gmail.com / enquiries@theoldstationshrewsbury.co.uk

Billcar

Ltd

Walford Heath, Walford SY4 3AZ

- MOT
- Servicing
- Repairs
- Parts
- Remap



Contact **T** 01743 291740 **M** 07971 063469
engineering@billcar.co.uk www.billcar.biz

Certified Sharpeners  **professional sharpening services**

Riddles, Back Lane, Bomere Heath, SY4 3PL

07517 434947

Your Local Professional Sharpener

Knives: All Types Scissors: Hair & Dog, Industrial & Domestic
Clipper Blades: Horse & Pet

Garden Equipment: Manual, Shears Secateurs Loppers Axes

Powered: Hedge Trimmers Saw Chain Mower & Shredder Blades

Wood Working Tools: Chisels, Planes Spoke Shaves

Twist Drills, Tin Snips And So Much More

To Be Blunt We Sharpen Things

Web: certifiedsharpeners.co.uk Email: kennedgpr@icloud.com

Sharna's Pet Care Service

Many years of experience
working with animals

- Canine First Responder
 - Older Dogs are Catered for and Welcomed
 - Home Sitting Service
 - Holiday Cover 
 - Hospital Stays
 - Work Commitments etc
 - Five Star Care rating establishment
- Walking/exercising all done with love, care and attention.

Call: 07990 911 941

E: peanut1801@hotmail.co.uk

PC & LAPTOP REPAIRS
COMPUTER PROBLEMS SOLVED

☒ Slow computers made faster
☒ New computers setup
☒ Internet, Email, WiFi
☒ Virus removal



☒ All hardware repaired
☒ All problems solved
☒ No callout fee
☒ Nothing to pay if he can't fix it

Reliable, friendly service, direct to your door
Free collection & return if not reparable on site
Free no obligation quotations provided
100% risk free - you only pay when we repair!

Call Dan on 01743 294555

 **Computer Repair Man**

"LOCAL TECHNICIANS YOU CAN TRUST!"

Style Care Hair
Bomere Heath, SY4 3NX

Just need a trim or a whole style change? No problem call or pop in to discuss.

Full Colours, Foils,
Perms, Highlights,
Blowdrys, Children Cuts
all available.

Tel: 01939 290664 /

Tuesday 9am - 5pm
Thursday 9am - 5pm
Friday 9am - 5pm
Saturday 8.30am - 3pm



Cut & Colour Baschurch

Hair, Nails, Beauty & Aesthetics



(01939) 809589



Cut & Colour Baschurch



Open Monday – Saturday @ Station Road, Baschurch, SY4 2BB



Heating Cooling Refrigeration

- Air Conditioning & Ventilation equipment
- Sales
- Service
- Installation
- FREE Quote/Survey

*"To cool or not too cool ... that is the question."
We look forward to your call*

MERRINGTON HALL FARM, BOMERE HEATH SHREWSBURY SY4 3QJ

t 01939 290234 m 07793 823887 e rob@racclimatecontrol.co.uk
Rob A Cooke

Contact us on 01743 276797 for an initial complimentary meeting and an opportunity for us to help organise your financial affairs.



Investment Management
Retirement Planning
Financial Planning
Tax and Estate Planning
Trustee Investments
Long Term Care
Business Planning

Crown Wealth Management Limited
Columbe House
7 London Road
Shrewsbury
SY2 6NH

T 01743 276797
E info@crownwm.co.uk



New Model
Adviser
TOP 100
2018

Crown Wealth Management Limited is authorised and regulated by the Financial Conduct Authority.
Estate Planning and Trusts, in addition to some forms of tax planning, are not regulated by the Financial Conduct Authority.

www.crownwm.co.uk

Knitting Wools & Yarns



- Branded Fashion & Classic Qualities
- Dye Lot Ends
- Clearance From **£1.00** per Ball
- Patterns and Needles
- Knitting Accessories
- Haberdashery
- Craft For Christmas

Shop Now Open To The Public

Monday, Tuesday, Wednesday, Thursday and Friday
9.30am - 4.00pm

Focuscraft, 3 Merrington Business Park, Bomere Heath, SY4 3QJ

Tel: 01939 291848

HG
*The***HIDDEN GEM**

**Designer Mother of the Bride /
Groom and Special Occasion Wear**
Stockists for Invitations by Veni & Veni Infantino

Beautiful Designer Hats to Match
(Buy Back Options also available)

We also stock John Charles Collection
We have a selection of pre-loved outfits for hire or sale

Prom & Ball Gowns

*Packages available to include Hair and Make Up
by very talented Professional*



www.thehiddengemshropshire.co.uk • 07971 182163

Adrian Huxley Oil Boiler Service & Repairs

**Est 20 Years
Qualified
Engineer**

Tel 01948 830657

Mob: 07890 013929

Shropshire Earwax Removal

Using microsuction - the quickest and
safest method of earwax removal
Mark Challiner PhD RHAD is an Accredited
Hearcare Professional with over 15 years
experience

I can safely remove any earwax in your
own home or in clinic at Bicton

£60 one or both ears (not £60 an ear)

£25 'consultation only' fee if no earwax

Phone or text 07411 223357

email: dr.markchalliner@gmail.com

www.shropshire-earwaxremoval.co.uk



www.hcpc-uk.org

Hut 4 Mutts

Professional Dog grooming Spa & Salon

Located in Leaton Knolls, Berwick Road, Shrewsbury



- Fully Qualified
- Grooming consultations & health checks
- Full Grooms / in-between brush & tidy-up
- Hydrobath & Brush
- Puppy grooming Intro Sessions
- Nail Clipping

For bookings & advice contact Natalie:

Telephone: 07891 665 541 E-mail: hut4mutts@gmail.com

Website: www.hut4mutts.co.uk

Dave Jenkins

Painter and decorator
Fully Insured Interior and Exterior

References on request

P.D.A. Approved

Telephone

01939 210 447

07740 424 287



JAMES COALES PROFESSIONAL TREE SERVICES

- Fully Insured
- All Aspects of Tree Surgery
- Free No Obligation Quotations



James Coales (cert.Arb)

Mob: 07834 525156

Home 01743 243030

E: jaycoales@hotmail.com

EST  1936

Frank Painter & Sons

FUNERAL DIRECTORS
Spring Gardens, Shrewsbury
01743 362024


—Incorporating—

Grindalls of Wem

FUNERAL DIRECTORS
Aston Street, Wem
01939 233903

4th Generation family owned
bereavement service, covering all areas
Day or Night

www.frankpainterandsons.co.uk

Golden Charter 
Funeral Plans Available



Bomere Heath and District News



April- May 2024

Welcome to our Spring issue! We hope you enjoy it. As ever, I'd like to warmly invite you to get involved with the magazine. In particular, we're hoping to have a different person provide a seasonal photograph for the cover of each edition, and we are always on the look out for a pet to feature. We also welcome any feedback or suggestions. If you think you might be interested in helping with any of the above, then do just send an email- bomereimag@gmail.com. We look forward to hearing from you...

We're deeply grateful to all of you who have provided articles, adverts, delivered copies or who have just helped us along the way. Thank you!

Hannah Lins (Content Coordinator for this edition)



Our next edition will be June 2024, with a copy deadline of 16th May.

We now have a directory of contacts at the back of our mag, so please do look there for all other contact details.

If you would like to receive the mag as an email rather than paper copy, then do let us know at bomereimag@gmail.com- make sure you include your postal address so that we can remove you from our home delivery list.

Remembering Clare

We were deeply shocked and saddened to learn of the death of Clare Lea, who passed away suddenly in March. Clare and Tony looked after the magazine so well- between them they kept it going for years, and she was the editor right up until Christmas. If it wasn't for her, the new-look mag may never have happened- it was her (very) well-publicised AGM back in July that led to the formation of the working group.

All who knew Clare remember her as a kind-hearted, creative and committed member of the Bomere community. She was so thoughtful and caring- giving cards and presents and always remembering birthdays and anniversaries. She was also a gifted artist, and created the lovely wildflower map at Battisfield Church.

We are deeply thankful to have known her, and for the way in which she flew the flag for the Bomere Heath and District News. We will miss her dearly. Please do keep Tony, the family and their friends in your thoughts and prayers at this desperately sad time.





Bomere Heath Village Hall

The first few community events at the Village Hall raised over £600 for our Village Hall funds. It was so lovely to see a new event at the hall with the Valentine Ceilidh. It was very well attended and everyone commented on what a brilliant time they had. I can honestly say I haven't laughed so much in a long time! The live band, Odd Socks, were incredible and got everyone up and dancing all night. I'm sure it will be back by popular demand before the year is out. The Spring Quiz sold out and as usual was extremely popular and a complete success. Myself and the Management Committee would like to thank our wonderful group of volunteers for their support and organisation skills in putting on these events, without them we would struggle to keep the village hall running.

I am pleased to report that we already have volunteers who want to help organise the next couple of quizzes. We have also purchased a Bingo Machine with some of the proceeds from the fundraising events and the volunteers are busy organising the next Bingo evenings in the Village Hall. Dates for the Quiz and Bingo evenings will be advertised on our website and Facebook soon so keep your eye out for these. Unfortunately the Easter event the volunteers were planning did not have enough interest to make it a viable event which is a real shame. The volunteers were planning something for D-Day celebrations but they are going to take stock in light of the low interest in the family Easter event.

The village hall is used regularly by a number of community groups and in each edition we are spotlighting a community group to let you know a little more about them.

We are a group of ladies that meet in the Red Room on the first Tuesday evening of the month at 7.30pm. We are now looking forward to our 59th year. We have a varied programme, kicking off with 16 of us having a lovely meal at the Red Lion, Battlefield. Coming up is a coffee, chat and game of bingo or quiz, a selection of interesting speakers and in August a day trip either to Trentham Gardens or Liverpool Docks, to be decided at the next meeting. We would love to see new members, so if you feel like a lighthearted fun evening and a cup of coffee come along and join us.

Jen Cooper

Chair@bhvh.co.uk

CHURCH SERVICES

Anyone is welcome at any of our services- we are here for you! Each one lasts about an hour, and our service times are below:



 Date	Bomere Methodist Church the redbrick church at the top of the bank on Baschurch Road, SY4 3PN	Holy Trinity, Leaton the parish church- Berwick Road, SY4 3AP	The Mission Church the white building in the centre of the village- Shrewsbury Road, SY4 3PN	St John the Baptist, Albrighton the sandstone church opposite Albrighton Hall Hotel- SY4 3HP
7 th April	10.30am	10.45am	No service	9.15am
14 th April	10.30am	10.45am	9am	No service
21 st April	10.30am	10.45am	No service	9.15am
28 th April	10.30am@ Belle Vue	10.45am	9am	No service
5 th May	10.30am	10.45am	No service	9.15am
Thursday, 9 th May- Ascension Day- there will be a service at Bicton Church at 7pm				
12 th May	10.30am	10.45am	9am	No service
19 th May (Pentecost)	10.30am	10.45am	No service	9.15am
26 th May	10.30am	10.45am	9am	No service

To find out more about the wider life of the local churches, go to our websites:

www.shropshireandmarches.org.uk

www.severnloopparishes.org.uk



The Methodist Church



THE CHURCH OF ENGLAND

REGULAR HOSPITALITY

Coffee and Play Every Tuesday in term time, 8.45am-10.15am The Mission Church	Coffee, Craft and Chat First Wednesday of the month, 10am-noon The Methodist Church	Tea and Cake Third Tuesday of the month, 2pm-4pm The Methodist Church	Stepping Out Café Last Wednesday of the month, 2.30pm-4pm The Mission Church
--	--	--	---

BELL RINGING

Is there anyone out there who would be interested in learning to ring the bells at Leaton Church. If there is please get in touch with Pat Hall on 01939 290637

PIMM'S AND PROMS IN THE PEWS

There will be a Brass Band concert at Holy Trinity Church, Leaton on **FRIDAY 21st JUNE 2024** at 7.30pm, featuring music from the Proms. Tickets priced £10 are available from Pat Hall 290637 or Valerie Rennie 290604. Refreshments including a glass of Pimm's or alternatives. **RAFFLE**. Proceeds to **LINGEN DAVIES CANCER FUND** and Holy Trinity Church, Leaton.

Leaton Churchyard

Sadly, since December we have had significant groundwater flooding in the churchyard. This is not a new issue, but it has never been this bad before. We have taken expert advice, and unfortunately groundwater levels are getting worse in general, so the prognosis is not good and there are no easy solutions. On top of that, the cellar floods repeatedly and so we have had to pump water out of there, onto the same ground. We've lost our boiler to the flood, and the electrics have also been compromised. We are very much aware that for those who visit the graves of loved ones at Leaton the water levels have been very distressing, and we're so sorry about that. We're deeply grateful to our churchwardens (Pat Hall and Peter Leddington), who are working tirelessly to keep the church and grounds going- and to you, for your grace and forbearance in these difficult circumstances.

LEATON AND MISSION CHURCHES

AFTERNOON TEA FOR LADIES

MISSION CHURCH, BOMERE HEATH

Saturday April 20th 3pm -5pm.

SPEAKER Revd. Hannah Lins



Tickets £5 from Pat Hall 290637 or Valerie Rennie 290604

9		5		1				
					6		3	
7		2		8				9
2			9				7	
				5				
	8				1			2
4				3		7		8
	7		5					
				6		3		1

SUDOKU

BECKY'S BUTTERFLY CHARITY- by Arthur Payne

Becky, our younger daughter, worked in Northern Peru as a charity volunteer during 2006-7. She spoke fluent Peruvian Spanish & worked in primary schools in the very poor areas around Chiclayo. She met Cesar who was the Head of IT in a private School. We travelled to Chiclayo in January 2008 for their wedding & they came to live with us in Cambridgeshire. Sadly, Becky was killed in a motor accident near where we lived in November 2008.



Cesar & Arthur established Becky's Butterfly Charity to do work with the under-privileged in Peru. Much care is required- we deal via a couple of trusted intermediaries & only handover goods not money. With no overheads the money is applied 100% to deliver benefits.

We contribute monthly to the Anita Goulden Trust & Amantani. Anita Goulden established a home for severely disabled children in Piura north of Chiclayo about 50 years ago & this is overseen by a Trust based in London. You can find out more at www.anitagoulden.org

Amantani was founded by two guys based in Oxford who have produced amazing achievements in the Quecha communities in the high Andes above Cuzco. They are now replicating this in Iquitos in the Peruvian Amazon region. You can find out more at www.amantani.org.uk

We produce a couple of Charity updates each year with details of the activities and you can e-mail arthur.john.payne@gmail.com or call me on 01939-290494 if you would like a copy.

AIRCRAFT MEMORIES



The photos of the Polish Air Force MiG-29 were taken at RAF Shawbury in June 2018 when it was practicing for the Cosford Air Show.

I have an extensive collection of airliner & military photos which is truly worldwide. If you have a memory of a flight, airline, aircraft, airport or military airshow I may well have a photo for you. Contact me on arthur.john.payne@gmail.com or 01939-290494 to see what I can offer. I don't ask for payment but any donations go to Becky's Butterfly Charity for work mainly in Peru.



The Ladybird and The Book

I'm always amazed at little wonders in a big world that can be full of challenges. Recently, whilst leading a church service, we sang the beloved All Things Bright and Beautiful. It was a cold day in a stone church, peoples's voices a bit more quiet than usual. As we sang the line 'He made their tiny wings' a little ladybird flew down on to the hymn sheet exposing their delicate and wonderfully decorated wings. I couldn't help but smile at the synchronicity of the timely arrival of such a small creature. It remained there until after we had finished singing and then flew off to rest on the near by book. Those small moments of wonder can help carry us through difficult times. What I did not mention earlier was the church service was a funeral for someone who had really struggled in life and the room felt very heavy and it was indeed very sad.

I shared with the congregation what had happened and we all took a moment to appreciate the synchronicity of the moment and it lifted the spirits of everyone present in a way that I could never have done with words. Where ever we might find ourselves in life- with its challenges, may we be open to the small synchronicities of life, those small wonders reminding us that God sometimes speaks to us without words. I hope this spring you will see those small wonders and be upheld in God's care.

Rev. MacNeill Cooper, Methodist Minister
Bomere Heath Methodist Church



Pet of the Issue



Introducing Tess, who lives with the Dowman family...

We had Tess in November 2017 from Copthorne Vets she was handed into them, they couldn't find her previous home, so we took her in she settled in straight away. Tess is an amazing little cat. She comes and sits with us when we are poorly she also let's us know

when Dylan's blood sugar levels are low or high (Dylan is type 1 diabetic) she Meows until Dylan does his bloods and has his hypo treatment. In 2022, Tess had an accident she lost one of her back legs, but that's not stopped her. She still rules the roost here, keeping the other animals in check!

Bomere Heath Cricket Club News

Although the weather has been wet, windy & cold and the only indoor cricket being played has been in sports halls, the club has been a hive of activity as we prepare for the season ahead. On the subject of indoor cricket, our senior indoor team recently took home the division 2 title in the Shrewsbury Indoor Wheatlands League, whilst our ladies softball section have been competing in various tournaments over the winter months.



Our ever-popular junior section will be continuing on Friday nights from May under the stewardship of Harry Bolland, our 1st team captain. This will include Allstars, Dynamos and hard-ball cricket for the older children. We also hope to run our successful summer camp again in July!

Weekend cricket begins (weather permitting!) on the 27th of April and we hope to see you down the club to support the teams. It's an exciting time for the club as we hope to push for promotion back into the Shropshire Premier Division. Our overseas professional – Issac Wallace from Australia – arrives in early April with his partner and we can't wait to integrate them into the village!



Our clubhouse has undergone some changes over the winter, with a refurb to the ladies' toilets and the bar. We'll have more news on a grand opening once the work is complete!

Please follow our social media channels to ensure you're up to speed with everything going on at the club and fingers crossed for a brilliant (and dry!) summer!

Adam Vanner – Bomere Heath CC Chair

Photos:

Top right- Senior Indoor Team

Left- Ladies Softball Team (finalists in the Shrewsbury Indoor League)

PRESCOTT SURGERY PATIENT NEWSLETTER SUMMARY

March/April 2024- to read the full newsletter,
go to <https://prescottsurgery.co.uk/>

Important News from your Patient Group (PPG)

The Patient Group would like to welcome Nick Storey back to Prescott Surgery as (part-time) Practice Business Manager. The Patient Group is looking forward to working with Nick and Jenni Green, Patient Services & Quality Lead, to continually review and improve patient services at the practice.

The patient group remain focused on the output of the patient survey and in particular the areas of access to appointments, the dispensary and the premises and car park. We are working closely with the practice to ensure these matters continue to receive high profile.

Jackie Jones, Chair - Prescott Surgery Patient Group

Important News from your Surgery

Leadership at the Practice (by Dr Guildford)

As part of a small restructure designed to improve and support Leadership and Management and ultimately, the service that is provided to patients, the partners have appointed **Nick Storey as Business Manager**. Nick was Practice Manager at Prescott Surgery from 2014 to 2020. Nick has appointed **Jenni Green as Patient Services and Quality Lead**, **Alison (Ali) Jones has been appointed as Reception and Admin Lead** and **Laura Bradley as Dispensary Manager**.

Dispensary Update (by Nick Storey)

I have been working in the background with the partners since October on a plan to improve the Dispensary and recently met with the PPG to discuss the progress. **The priority is to ensure that all medication is ready for collection with 5 working days of being ordered.** I will also be **reviewing the medication delivery service** which was introduced because of lockdown back in March 2020 and which was intended only to be a temporary patient service.

New Telephone System (by Nick Storey)

In the Spring a new telephone system will be introduced. The main benefit to patient service is that it will introduce an automated call-back feature. This means that if you were to call the practice at a busy time of the day e.g., at 08:30, the system will keep you in the queue and will call you back when your place in the queue rises to the top. You will not lose your place. The only difference is that you will not have to sit listening to background music.



Baschurch, Bomere Heath and District Branch
(1924 – 2024) The Royal British Legion invite
you to join us for our celebration

Centenary Concert



SHREWSBURY BRASS BAND

BASCHURCH CE PRIMARY SCHOOL CHOIR

Saturday 27 April 2024 at 7pm

All Saints' Church, Baschurch

Tickets are £10 adult; £5 under 16. Refreshments included.
Raffle on the night. Tickets either on the door or available in
advance from:

Baschurch CE Primary School Office

RBL: Jerry Revans 01939 260835

Church: Martyn Lake 01939 290777

The Poppy Appeal



As a result of your generosity, the 2023/24 Poppy Appeal raised £5458.59, an increase from the previous year. Thank you to all of you who continue to support this important annual appeal, which provides help and support to our service personnel, dependants and veterans.

After 17 years, I have decided to retire as Poppy Organiser. Kevin Weller, a recent new member of our Branch, has kindly volunteered to take over. I wish him much success.

Jon Worrall



Book Club News

The Bomere Heath Bookclub started in January 2020, we somehow kept it going through the pandemic and, gratefully, we are still here in 2024. We meet once a month in our village pub to discuss the book choice for that month. Each member chooses a book, and then leads the discussion. We've read everything from historic and crime novels, to time travel and biographical and autobiographical.

The bookclub gives you the chance to broaden your horizon and enjoy books you might otherwise not have considered. Apart from that, we're a friendly bunch of readers who enjoy an evening out to chat about books and having a drink.

- We meet every 4th Monday in the month
- (This year the club meetings fall on a Bank Holiday, but that's not a problem)
- At the Red Lion Inn in Bomere Heath at 20.00 hrs
- We are happy to welcome new members, and have a couple of places still available - for more information please contact Liz Payne on 01939-290494



Bomere Heath & District Parish Council is on Facebook -
www.facebook.com/pg/BomereHeathCouncil

BHDPC

BOMERE HEATH & DISTRICT
PARISH COUNCIL



BOMERE HEATH PARISH COUNCIL

There is always an open invite to members of the public, should you like to attend as a member of public you are very welcome, but spaces can be limited. If so, please contact the clerk to book a space. Below are extracts from the Parish Council meeting at Fitz Village Hall on **Wednesday 13th March 2024**

Community Events

The Parish Council intend to fund and aim to facilitate a community event committee to host a Fete in 2024 and are hoping that we can financially assist an event to commemorate the 80th Anniversary of the D-Day Landings on the 6th June. The Cricket Club has kindly volunteered to host the event, so please let us know if you would like to become an organiser. This will need a community group to pull an event together. Should you wish to be involved, please contact the PC Clerk to register your interest. It is only with the support from the community that these events can be held.

Police News

We were joined by the WMP Rural North team. They gave an insight to some of the crimes and issues to be wary of at the moment. There has been a spike in rural crime, in particular to the West of the County. This included Diesel and Farm Plant Thefts. This is now a focus of the police, but noted that the nature of our rural rat runs, it makes catching thieves difficult. The request is to be vigilant, take care when storing farm machinery and report any suspicious behaviour to the policing team. There may be a connection between these thefts and Drones used to scope, so again, if you see suspicious activity, please report to the policing team based in Pontesbury. Scan the QR Code for contact details.



WEST MERCIA
POLICE



Planning

We reviewed several applications since the last publication. Full Feedback can be found on the Shropshire Planning Portal.

Finance

The PC has healthy finances, we have reviewed the budget for 2024/25 and this is now set. We will spend more than council tax brings, but this is being reviewed and we are hopeful that we will not exceed the budget in the next financial year, however, our reserves will support any overspend. One of the bigger tasks will be to progress the acquisition of land to provide a space for youths to play and be safe in our parish.

Youth Club

The Parish Council has been informed that there is a change of leadership at the club starting after Easter. The club is still performing well, and the PC awarded a grant of just under £300 for play equipment. If you have the capacity to assist or are a parent/carer of children attending and could help on a Thursday evening, this would be an asset to the group.

Ball Park Clarity

In response to some Facebook comments, it appears that there was some uncertainty with the access to the Ball Park and why the Ball Park (in the Primary School) was closed. Access to the Ball Park had been an ongoing issue since 2019 and came to a head in April last year. In short, the Ball Park and the land it sits on is owned by the Diocese of Lichfield. For clarity, it was never Council/Parish Council or Village Hall land, it has always been owned by the Diocesan of Lichfield, therefore private land.

In 2009 Shropshire Council/ the PC/School & Diocese of Lichfield entered into a lease agreement. This was to lease the land for 10 years with a right to renew. As a result of that agreement SCC & PC funded the Ball Park on the condition that the school had use. This was agreeable by everyone and was built.

Most of the key players had forgotten that there was a lease, so when this was identified in late 2019/2020, the sticking point in a renewal of a lease was the wording of the lease. The Parish Council, under the lease, had a lot of responsibilities over and above maintenance, which we didn't realise was in the original lease and the PC hadn't been doing.

Long and short, all parties met several times during Covid and more recently, but there was no middle ground that we could agree on. All parties (including the school) did look at several options including giving the land to the PC and us giving access. But there was not an option that the Diocese could accept, due to insurances/trespass and safeguarding matters. Therefore, it was with great regret that the PC, the School and the Diocesan of Litchfield could not renew the lease, and as a result the school (due to management, resourcing, insurance and trespass issues) had no choice but to close the Ball Park from public use.

Whilst this was frustrating for all parties, with people suing people over the littlest things, this was the only response the school and their legal advisors could accept. The Parish and the School have and still maintained good relations and we are working together in several other areas. But regarding trying to "Re-open" the former Ball Park, it is private land, so discussion closed.

What next:

The PC have reached out to other landowners and if the new estate to the South of the Village gains planning approval, the developer is geared up to help us with funding, but there is a long way to go before that is agreed. The Parish Council are aware of the lack of the provision for teenaged children in the village. As a group, we always try to consider burdens on the Parish infrastructure and welcome ideas or support including help volunteering in several ways. EG

- Join the Parish Council, (please contact the Clerk).
- OR Support Local groups in the Village, including
 - o The Village Hall committee/ Café team
 - o The Youth Club run by SYA
 - o Or Bomere Heath Scout Group all who need support and help to stay running and any offers of time to help keep these groups afloat.

The next meeting is to be held on **Wednesday 10th April 2024 at 7.00pm in Bomere Heath Village Hall. This is for our half hour community open session & AGM, please pop along.**

We will post the agenda for this meeting on the website nearer the time. If you wish to have a comment read aloud on an issue, please contact the Clerk in writing and give 5 working days' notice so it can be placed on an Agenda. clerk@bomereheath.co.uk

Bomere Heath Gardening Club

7.30.p.m. Thursday, 25th April 2024 in the Wale Room

Talk by Peter Anderson -

Sustainable Gardening

Visitors are always welcome at £5. To include refreshments.

Further information contact Anita. 07985.082172



Thursday, 30th May, 2024

Outing to Derwen Garden Centre

Coach Leaves The Red Lion, Bomere Heath at 1p.m.

You will have needed to put your name on the list or contact Anita on 07985.082172 to be included.

Open to Visitors

**BOMERE HEATH
LADIES CLUB**

Bomere Heath Ladies Club meets on the first Tuesday in the month at 7.30pm in the Red Room in the Village Hall (unless we are out on trips etc). We enjoy trips, speakers and quiz evenings amongst other events.

Why not join us - our annual subscriptions are £15 and £2 at each meeting attended.

Why not come along and give us a trial. Guests £4 per meeting

**Tuesday April 2nd . A Pictorial guide to the high fells of the
Lake District. John Perkins.**

Tuesday May 7th. Talk on Morris Dancing .Bev Langton.

**Tuesday August 6th.Day Trip to either Trentham Gardens
or Liverpool Docks TBC.**

**If you would like to join us, please call me,
Ann Misselbrook, 07776 099587**

Tales from the Vets, by David Jagger

The horse with a green face

Horses travel to foreign countries quite regularly, mainly to attend sporting activities such as racing, show jumping, eventing or dressage. Also, for breeding and sale. Horse veterinary surgeons are very much involved in the process. There are many statutory regulations, mainly controlled by DEFRA which become the responsibility of the equine vet.

This is an account of a beautiful tall black gelding called Jethro. He was to travel to Spain to be a major character in a mega budget film- a Sean Connery James Bond blockbuster. The producers had contacted Jethro's owner who had, in the past, supplied horses for films and was himself a well-known stunt rider. They had stipulated that the horse must be totally black. Unfortunately, Jethro had a very prominent 'blaze' - a broad white stripe running down the front of a horse's face. Jethro's owner being a resourceful sort of chap assured the producers that Jethro was completely black and would arrive on the film set on the agreed date.

Our veterinary practice was notified by DEFRA that our client proposed to send a horse to Spain and that we were required to examine the horse and complete his export documents. This was before microchips- at that time horses were identified solely using a diagram and written description of all markings including the position of at least 8 hair whorls. From this an accurate identity could be established.

When I arrived to complete Jethro's health and identity documents I was presented with a horse with a green face. I am sorry to say it did not suit him! One of the most important parts of the pre-export certification processes is to re-draw an accurate identity diagram of the horse at the time of export. White markings have to be coloured in as red. Jethro's owner assured me that the dying process would be complete by the time the horse arrived on the film set, which was no help to me having to certify and identify the horse in front of me.

Border Forces officers accepted the green faced horse with his green identity papers. Jethro appeared in the film apparently jumping off a cliff into the sea with his smart new BLACK face. I made very sure not to enquire how Jethro managed to explain his way back home with a black face after leaving Britain with a green one.



News from Bomere Heath School

On the 26th February an exciting event happened at Chester Museum. We were all lined up outside and two roman soldiers stumbled up towards us and let us into the museum and we were all amazed by a statue that looked unbelievably real but I'm sure it was fake. Only key stage two went on the trip and pretended to be roman soldiers. We went up the lane singing left right nonstop and arrived at the Amphitheatre with our shields. We sang left right in Latin because Romans spoke in Latin. We all split up into different groups to get more done and there would be more space in the rooms we went to. After lunch we all went to a little room with a man called Dave who showed us how to be an archaeologist for the day. We explored the museum and found answers to many of our questions. We all had a brilliant day! *By Annabelle and Beatrice*



A Poem for Easter *by Kyra*

I am the light of the world, whoever
follows me will never walk in darkness,
but will have the light of life
Jesus said knowing he would be with
them in his afterlife
When Jesus died the light faded
And when that happened the darkness
invaded
All who dwell in dark and sin
Just remember the light will win
All the darkness will eventually fall
And the light to heaven will one day
call.

Easter Anagrams *by Indi and Esme*

lchaoocet
restea
ngnub
ickhc
tresionrves
odog yfriad



**In need of fuel?
TOP UP
SPIRITUALLY AT A
FILLING STATION NEAR YOU**

3rd Tuesday of each month ... 7.30 pm

Knockin Village Hall ... SY10 8HJ

Join us for coffee, cake, worship, prayer

and a good speaker ...



www.supportmycomputer.co.uk



**New PCs & Laptops fully installed at home
Spyware Removal/Installation of Leading Edge
Spyware Prevention
Performance Tuning and Business PC Support
Upgrades and Automated Backup
Remote Support/Annual PC Health Check Also
Available
For low fixed Prices from £19.95**

**PC/Laptop Stopped running or running slow or need a
replacement?**

Call Justin on (01691) 830822 or (07772) 596029

Garry Roberts

Plumbing & Heating

☎ 07775775938

📍 Shrewsbury & Surrounding Areas

✉ garryroberts909@yahoo.com

G.R PLUMBING & HEATING

Gas Safe - Energy Efficiency

Plumbing Installation &

Repair Services - Landlord

Safety Certification - 20+ Yrs
Experience

Reg:

227058

GAS

safe

Looking for helpful and reassuring financial advice?

We offer professional financial
planning to the mature and
retired market.

Get in touch for open and
honest advice.



Portland
Financial
Planning

CALL 01743 365 813

EMAIL info@portland-fp.co.uk

VISIT www.portland-fp.co.uk

Portland Financial Planning Ltd.
are authorised and regulated
by the Financial Conduct Authority

DRESSMAKING AND ALTERATIONS



FROM MAKING
WEDDING DRESSES TO
SHORTENING CURTAINS
COMPETITIVE PRICES

For information call

01939 260892

2 RONNIE'S

**121 BELLE VUE RD
SHREWSBURY, SY3 7NJ**

For Repairs and Service to:-

HOTPOINT, HOOVER

And DYSON, NUMATIC,

ELECTROLUX

HOOVER VACUUM CLEANERS

Tel: (01743) 351763

Beauty Therapy by Jo Parker

IHBC (1986) ABT

Treatments in the comfort, privacy and
convenience of your own home.

Facials, Massage, Waxing

Eyebrow shaping, lash & brow tinting

Manicures & Pedicures

Indian Head Massage

Gift vouchers available

Mobile: 07941 033155

Yoga

with Faith Page

Bomere Heath Village Hall

Monday evenings

6.00-7.15pm

**Improve your strength
and flexibility!**

£7.00/session*

Contact Faith for details:

07980 864161

faith@shrewsburyyoga.co.uk

(*course payable in advance)

If You Would Like to advertise Here:

Please contact

Caroline Lawson

07831 661000

caroline.lawson@btconnect.com

DENTURE WEARERS

**KEEP THESE
NUMBERS SAFE!**

ANDY

(Previously Leaton Dental)

07713 514168

01939 291211

For all your Denture
needs
and REPAIRS

Geraldine's Bridal and General Alterations



**For More Information
contact
07812 927310
gerrytomlins@hotmail.com**

BOMERE HEATH SUNSHINE PRE-SCHOOL

WILTSHIRE COUNTY COUNCIL

'A WELCOMING AND CREATIVE ENVIRONMENT'

RATED GOOD BY OFSTED OCT 2022



SESSIONS NOW AVAILABLE

Monday-Friday 9-3

We provide 24H, 15 and 30 hours funding

Extended hours available by arrangement

Contact: 07743 197988 or 07495 827078

Email: sunshinepreschool@live.co.uk

Website: sunshinepreschoolbomere.weebly.com



DSD Plumbing & Heating Ltd

Damien: 07949791029

Office: 01743 383859

E-Mail: dsdheatingltd@hotmail.co.uk

All works undertaken, no job too small.

Fully insured and qualified for over 15 years.

From tap washers to full central heating systems we cover all aspects of plumbing and heating.

Find us on:



DSDPlumbingHeating





Design, Print & Promotional

You think it
We design and print it!

- Flyers
- Banners
- Posters
- Brochures
- Business Cards
- Leaflets
- Newsletters
- Business Stationery
- Promotional Items
- Work Wear

Get in touch to find out more!

SJF Design, Print & Promotional
Unit 7, Leaton Forest Offices,
Leaton Knolls, Shrewsbury,
Shropshire, SY4 3HX

E: hello@sjfdesignandprint.co.uk **W:** www.sjfdesignandprint.co.uk

T: 01939 210261/01939 291645

M: 07581 193576



<https://www.facebook.com/SJFDesignPrintPromotional/>



Farm Shop, Butchery, Deli, Café & Battlefield Exhibition.

We also do home deliveries.

Visit us at

www.battlefield1403.com

or call us on 01939 210 905



**For care at home
the way you want it,
around the clock.**

01939 291434

Inspected and rated

Outstanding ★



MERRINGTON, BOMERE HEATH, SHREWSBURY SY4 3QJ
email: careteam@surecareshropshire.co.uk



All aspects of building work undertaken including extensions, new builds, bathrooms, wet rooms, aids and adaptations, renovations, kitchen fitting, plumbing, electrical work and groundwork

**With over 25 years experience
call Phil Lansdale on 01939 220356 or 07863 180079**

Haystacks, Meadowfield Court, High Street, Clive, Shrewsbury SY4 3JL

For a free No Obligation Quotation

**ALAN
POWELL**



**Electrical
Contractor**

All types of Domestic,
Commercial and Agricultural
Installations and Repairs

Installation Testing
Fire Alarm Systems
Emergency Lighting

36 years experience
No job too small

Telephone:
01743 352379
Mobile:
07775 873 302

Email: richardblanchard171@btinternet.com

**HORSE LIVERY
DIY/PART
Broughton Farm
Harmer Hill**

Family run arable farm

- ◇ Floodlit all weather schooling area
- ◇ Large stables in court yard setting
- ◇ All year grazing in safe paddocks
- ◇ Excellent hacking in fields with tracks.

Telephone:
01939 220 250
01939 220 131



M&M TOOL HIRE

**Tool & Machinery Hire
Machinery Repairs
Service & Parts
Calor Gas Sales**

Unit 12 Harlescott Barns, Harlescott Lane, Shrewsbury, SY1
3SZ (Behind Nixons Pet Store)

Opening Times

Mon -Fri 8.30am - 4pm
Saturday by Appointment

01939 290120

Find us on @M & M Tool Hire

matthew@m-landscaping.co.uk www.mandmtoolhire.co.uk

S.Ellis Tree Services

Tree cutting service and garden maintenance

Sion Ellis

Tree Surgeon

07493 182 855

Sundorne

Shrewsbury

sionellis14@gmail.com

<https://www.facebook.com/s.ellistreeservices>



SALOP AERIALS

TELEVISION AND STEREO
RADIO, SATELLITE AERIALS
SUPPLIED, FITTED, MOVED
AND REPAIRED

ALL WORK AND PARTS
GUARANTEED 12 MONTHS

For further information
tel Bomere Heath 01939 291808
mobile 07721 018942

Russell Hughes

Flat Roofing over 20 years experience

General Handyman • Tile/Slate repairs

Chimney relining/repainting

Ridge rebedding/pointing

References on request

Hedge Cutting, Lawn Mowing, Fencing, Painting

Just Ask! 01939 291 372 • 07948 546 417

Clare's Foot Care

Foot Health Practitioner

Clare Tunnadine

DipCFHP, MPSPract

**Specialist foot care treatment in the
comfort of your own home including**

Nails trimmed

Callus removal

Corn removal

Fungal nail treatment

Verrucae

Thick nail reduction

Other foot health problems

Please call Clare on

07951 497307

**to book an appointment or make
enquiries.**

Football Coaching



One-To-One Coaching

Group Football Sessions

Fully Insured

Enhanced DBS Checked

Previous Coaching Experience

Ages 5 and Upwards

Weekday and Weekend

Availability

Contact Number: 07960903406

Email:

📍 School Road
Ruyton XI Towns
Shrewsbury
SY4 1JT
☎ 01939 261216



📍 High Ridge
Wern Road
Shawbury
SY4 4NW
☎ 01939 251180



ESTABLISHED SINCE 1991

INDEPENDENT PRACTICE

Green Hollow Veterinary Group

We provide our own 24 hour emergency service!

Caring for creatures great and small, from pets
to farm animals.

Riverside UPVC

(Est: 1996)

Double Glazing Repairs

Windows and Doors
(Upvc, wood, aluminium)

- Sealed units
- Locks
- Hinges
- Handles etc

All work carried out by Advanced

City & Guilds Carpenter

Contact: Danny Carroll

07703 464999

for free quote

Ross Hines Chimney Sweeping

Clean Chimneys are safe chimneys
Brush and Vacuum – Leakage testing – Nests
removed –Cows, Bird Guards and caps supplied and fitted. Open fire, multi fuel stoves,
Aga, domestic and commercial.
Fully Insured with NFU, Certificates given. For
a Fast, Friendly and Clean Service
or just help and advice.

Call 01939 768319

24 The Wheatlands, Baschurch, Shropshire.
Sweep Safe Member: 307

A.D.T. Carpets

4 Morris Shopping Park, Wern

Tel: Wern (01939) 233661

**NOW MAIN STOCKISTS FOR
RESTUS BEDS AND ACCESSORIES**

14 High Street, Ellesmere

Tel: Ellesmere (01691) 624422

Home Choose • Flooring Fitted Free
Excellent Service • Free Estimate

STEVE LAWLEY

Painters & Decorators and Building Maintenance

**Family run business for 26 years and serving
32 years in the trade.**

Interior & Exterior

Contact us on 01743 363265:

01939 251025 or 07946 392397

E:stevelawleydecorators@msn.com

W:stevelawleydecorators.co.uk

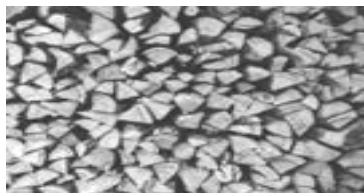


LEATON KNOLLS ESTATE

Unit 3, Leaton Forest Offices, Leaton, Shrewsbury, SY4 3HX.

www.leatonforest.co.uk Tel: 01939 290384

email: leatonestateoffice@leatonforest.co.uk



Firewood & Kindling

Logs sourced from our sustainably managed woods.

Delivery & Stacking service

Visit our website or email us for more information

Shire Stairlifts

SHROPSHIRE BASED STAIRLIFT COMPANY

**INSTALLATION
SERVICE & REPAIR
FREE NO OBLIGATION QUOTATION
2yr warranty on new stairlifts**

**Contact us for details
07725 337918**

**Crown House, Lancaster Rd
Shrewsbury, SY1 3LG
Email: info@shirestairlifts.co.uk**

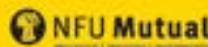
www.shirestairlifts.co.uk

We're the Which?
Insurance Brand
of the Year for the
second year running



Whether it's for your car, home, farm or
business, for quality insurance you can
rely on, join us today.

Contact NFU Mutual Shrewsbury
on 01743 344 743



S L Lutter & M D Shepherd is an appointed representative of The National Farmers Union Mutual Insurance Society Limited (No. 111982). Registered in England. Registered Office: Tiddington Road, Stratford-upon-Avon, Warwickshire, CV37 7BJ.



Church Road Garage (Baschurch) Limited
7 Church Road, Baschurch, SY4 2EP



The friendly team at Church Road Garage (Baschurch) Ltd offer a full range of motoring services for you and your vehicles including:

- MOT Testing - Cars & Light Vans
- Tyres - Competitive prices! Tracking, Punctures, Balancing
- Servicing to manufacturers schedules with OE quality parts
- Air Conditioning - Service & Repair
- Diagnostics using the latest equipment
- Repairs: Brakes, Clutches, Gearboxes, Suspension, Lights, Steering, Exhausts, Batteries etc.

Fully skilled, helpful and friendly team, with a service second to none! Advice is always free!

Phone: 01939 260702

Email: info@churchroadgarage.com

Website: www.churchroadgarage.com

If You Would Like to advertise Here (in colour)

Please contact: Caroline Lawson

07831 661000

caroline.lawson@btconnect.com

IAN WILLIAMS Painter and Decorator



*No Job
Too Small*

Tel: 07939 941922

The Pet Run
Dog Walking & Pet Services
Serving Shrewsbury & Surrounding Areas

- Dog Walking
- Pet Visits
- Pet Taxi
- Pet Sitting

01743 363265
07846891052

www.the-pet-run.co.uk
thepetrn@gmail.com

Fully Insured & DBS Checked



Aiming to give your pets 100% attention whilst you are at work or on holiday.
Allowing your beloved pets to stay in the comfort of their own home.

P. W. CHURMS OPTICIANS

YOUR LOCAL INDEPENDENT OPTICIANS



01939 261111

THE OLD POST OFFICE, STATION RD, BASCHURCH, SY4 2BB

baschurch@pwchurmsopticians.co.uk



Now with additional testing
days including Saturdays!
Call or email to arrange an
appointment to suit you

**FREE EYE TEST & 15% OFF YOUR FIRST
ORDER FOR ALL NEW PATIENTS**

PROVIDING QUALITY **NHS** AND PRIVATE EYECARE TO
BASCHURCH AND THE SURROUNDING COMMUNITY

Ray-Ban

NIKE

TOM FORD

Paul Smith

Flexon

Joules

TED BAKER

Calvin Klein

PAUL COSTELLOE

POLICE

CAROLINA HERRERA



OFFICIAL ESSILOR
EXPERT OPTICIAN

#1 in spectacle lenses worldwide



RED LION

BOMERE HEATH

Join us in welcoming Mikey
and Kelsea to the Red Lion.

REOPENING 1ST MAY 2024

Follow our Facebook page for latest
updates on our sparkle.

 @REDLIONBOMERE

ENJOY
10%
OFF
FOOD
THROUGHOUT
MAY

OFFER AVAILABLE
ALL DAY,
EVERY DAY.



SANDWICHES AND
DRAUGHT BITTER
make a meal of a good thing

10% Offer only available at the Red Lion, Bomer Heath, The Landlord has the right to reserve
promotion at any time. Minimum of one main must be purchased. Valid to 31st May

ENJOY A PINT
OF JOULE'S ON US.
AT THE
RED
LION
BOMERE
HEATH



10% Offer only available at the Red Lion, Bomer Heath, The Landlord has the right to reserve
promotion at any time. Minimum of one main must be purchased. Valid to 31st May

GWR LTD

FENCING, AGRICULTURAL & TIMBER SUPPLIES

FENCE PANELS, CONCRETE POSTS AND GRAVEL BOARDS

SAWN TIMBER, DECKING, AND NEW RAILWAY SLEEPERS

SCREWS, NAILS, STAPLES AND FITTINGS.

KILN DRIED HARDWOOD LOGS

BEST LOGS IN SHROPSHIRE



OPENING HOURS

8am-5pm Mon-Fri. 8am-1pm Sat

CALL US ON 01939 234880

EMAIL INFO@GWRLTD.CO.UK

WWW.GWRLTD.CO.UK

FACEBOOK [@GWRWOODFUEL](https://www.facebook.com/GWRWOODFUEL) [@GWRLTD.CO.UK](https://www.facebook.com/GWRLTD.CO.UK)

GWR LTD – Is a family owned & run business, supplying a complete range of fencing and wood fuel.

DELIVERY SERVICE AVAILABLE

Adrian Huxley Oil Boiler Service and Repairs- 8
 ADT Carpets- 33
 Alan Powell Electrical Contractor- 31
 Battlefield 1403- 29
 Beauty Therapy by Jo Parker- 27
 Beestons Property Services- 30
 Billcar Ltd- 4
 Bomere Heath Sunshine Preschool- 28
 Certified Sharpeners- 5
 Church Road Garage Baschurch- 36
 Clare's Footcare- 32
 Computer Repair Man- 5
 Crown Wealth Management- 7
 Cut and Colour Baschurch- 6
 Dave Jenkins Painter and Decorator- 9
 Denture Repairs- 27
 Dress Making and Alterations- 27
 DSD Plumbing and Heating- 28
 EB Coaching (football)- 32
 Frank Painter and Sons Funeral Directors- 9
 Garry Roberts Plumbing and Heating- 26
 Geraldine's Bridal and Alterations- 28
 Graeme Harris Contractors- 2
 Green Hollow Veterinary Group- 33
 GWR Ltd Timber Supplies- 39
 Horse Livery Broughton Farm- 31
 Huts for Mutts- 8
 Ian Williams Painter and Decorator- 36
 James Coales Professional Tree Services- 9
 Joules Brewery (Red Lion Pub)- 28
 Knitting Wools and Yarns- 7
 Leaton Knolls Firewood and Kindling- 34
 M&M Tool Hire- 31
 NFU Mutual- 35
 Portland Financial Planning- 26
 PW Churms Opticians- 37
 RAC Climate Control Ltd- 6
 Riverside UPVC- 33
 Ross Hines Chimney Sweeping- 33
 Russell Hughes Roofer and Handyman- 32
 Salop Aerials- 32
 S. Ellis Tree Services- 32
 Sharna's Pet Care Service- 5
 Shire Stairlifts- 35
 Shropshire Earwax Removal- 8
 SJF Design and Print- 29
 Steve Lawley Painters and Decorators- 34
 Style Care Hair- 5
 Support My Computer- 25
 SureCare- 30
 The Hidden Gem- 8
 The Old Station Bed and Breakfast- 3
 The Pet Run Dog Walking- 36
 Two Ronnie's- 27
 Yoga with Faith Page- 27

Bomere Heath and District News

*Is a joint publication managed by the
 Methodist and Anglican churches of Bomere
 Heath, Leaton and Albrighton with
 Battlefield.*

Chairperson: Hannah Lins
revhannahlins@gmail.com
 Secretary: Philippa Herbert
herbertphilippa66@gmail.com
 Treasurer: Caroline Watson
caroline.lawson@btconnect.com
 General enquiries:
bomereimag@gmail.com



Church Contacts:

Bomere Methodist Church:
bomereheathmethodist@gmail.com

Leaton and Mission Church
Churchwardens:
 Pat Hall: 01939 290637
 Peter Leddington:
p.leddington@outlook.com

Albrighton with Battlefield
Churchwardens:
 David Jagger: 07943 417628
 Claire Kirk: 01939 291023

Directory of Advertisers

All advertisers are listed to the left, along
 with the page you'll find their details on.



Clerk to the Parish Council-
 Mrs. S. Horton- 01939 290200

Village Hall Booking Secretary-
secretary@bhvh.co.uk or 07717 210219