

Benenden Magazine

September 2019



Benenden's

SHOP POST OFFICE CAFÉ

B's

... it's the word on The Street!

An excellent range of groceries, breads, vegetables, beers and wines
and with Post Office services ...

... and a great place to meet and chat over a coffee or snack.

Free Wifi



info@benendens.co.uk

Tel: 01580 279808

WS

Wordsworth
Surveyors
Ltd



01580 240626

info@wordsworthsurveyors.co.uk



MR NOAH'S NURSERY SCHOOL

<https://www.mrnoahs.org>



Thinking of selling or letting your property in or close to Benenden?

*For straightforward sale or letting advice
regarding the value of your house please
contact us.*

Specialist Rural and Village
Agent. Full Professional Estate
Agency service.

01580 766766

www.hobbsparker.co.uk



HOBBS • PARKER

The Villages

Editorial



August is a lovely month, but it always seems to fly by. Before you know it, we are into September, back to school and digging out our sweaters. I like September because it heralds new energy and new initiatives which is nicely demonstrated in this month's magazine. If you fancy starting something new, then consider the new classes in the village hall; auditioning to be in the Benenden Panto; volunteering at the shop or joining the Cranbrook Choir.

While they may not be embracing the end of summer holidays, I am sure the children are looking forward to entering their beautiful new school on 5 September. The whole village has been invited to explore the site at a Macmillan Coffee Morning on 14 September. This issue had gone to the printers before we could explore the site so we will carry a detailed overview in October. Instead, I took the opportunity to mark the start of the new term by interviewing inspiring Lindsay Roberts, our new headteacher (page 31). Before I knew it, she had signed me up to be a volunteer reader for the children.

Finally, don't forget that you can review the latest draft of the Neighbourhood Development Plan online at www.benendenneighbourhoodplan.org. The closing date for comments is Friday 11 October and, after feedback has been reviewed and adjustments made, the Regulation 15 Plan will be published towards the end of the year.

As for me, I can't wait to get back to boot camp in the Glebe Field twice a week in a vain attempt to shed the results of my summer indulgence and I am very tempted to sign up for the new art class. I may even try some of the no-alcohol drinks suggested by Alex Norwood Hill (page 34).

Ruth Clark, Co-Editor

The Benenden Magazine is published monthly as a joint venture by Benenden Parish Council and St George's Parochial Church Council. It is distributed free to all residents of the parish. Opinions expressed are not necessarily those of the publishers. Responsibility for accuracy of information rests with contributors and advertisers. Neither the publishers nor the editors shall be held responsible for or endorse any opinions, products or services printed in the magazine or directory.

Editors: Ruth Clark, Peter Thomas

Editorial Board: PCC Rep: Tracy Claridge, PC Rep: Nicola Thomas, Treasurer: Charles Trollope

Acting Advertising Manager: Paul Leek, Advertising Assistant: Iain Fraser

Distribution: Marilyn and Dick Hill, Layout Editor: Camilla Macdonald

Contributions to: benendenparishmagazine@gmail.com by the 10th of the preceding month.

Advertising orders or queries to: advertising.benendenmag@gmail.com.

Distribution queries to: dd.rhill@btinternet.com.

Postal address: c/o Community Office, Benenden Village Hall, Benenden, TN17 4DY 01580 240371

Village Calendar

September

Sunday 1	David Birchenough, Organ Recital, St George's Church, 6pm	p.13
Friday 6	Woodland Wide Games, Iden Green Congregational Church, 7pm	
Sunday 8	Village Panto Auditions, Benenden Village Hall, 2.30pm	p.9
Saturday 14	Open Morning, Benenden Primary School, 10-12noon	p.9
Saturday 14	Friends of Kent Churches, Ride + Stride for churches, 10am	p.13
Saturday 14	Quiz Night, St George's Club, 8.30pm	
Sunday 15	Messy Church, St George's Church, 4-6pm	p.15
Sunday 15	Harmsworth Court Service, Community Room, 4.30pm	
Monday 16	Parish Council Meeting, Iden Green Pavilion, 7pm	
Tuesday 17	Village Lunch, Benenden Village Hall, 12.30pm	p.9
Tuesday 17	Iden Green and Benenden WI, Towing and Salvage, Memorial Hall, 2pm	p.19
Friday 20	Iden Green and Benenden WI, Members' Coffee Morning, Member's home	p.19
Friday 20	Weird and Wonderful Wines, Benenden School Café, 7pm	p.35
Saturday 21	What's in Glenda's Box, St George's Club, 8.30pm	
Tuesday 24	Merry and Bright, Outing to Eastbourne, 12noon	
Saturday 28	The Benenden Revue, Benenden Village Hall, 7.30pm	p.11
Saturday 28	Cornhole Tossing, St George's Club, 8.30pm	
Sunday 29	Thank You Garden Party, The Rectory Garden, 3pm	p.13

October

Sunday 6	St George's Harvest Lunch, Benenden Village Hall, 12.30pm	p.17
Friday 11	The Music Scholars of Benenden School, St George's Church, 7.30pm	p.17
Monday 21	Ethiopia: The Cross and the Coffee Pot talk, St George's Church, 7.30pm	p.27

Benenden Youth Club/Streetcruizer, age 11+

Tuesdays at Benenden Village Hall, 6.30-8.30pm

Coffee Shop

Wednesdays in the Memorial Hall, 10-12noon

Benenden Bowls Club

Thursdays, April-September, on the recreation field, practice night, 6.30pm

Cakes & Chaos: Cafe and Toddler Group

Fridays during term time in St George's Church, 9-11.15am

Refuse Lorry Collections

Saturday 7 September for Garden/Compostable Waste

Benenden, Village Hall layby, 8-9.20am and Iden Green, crossroads, 9.40-11am

Parish Council



Despite the fact that there are now nine councillors on the Parish Council, my turn for writing a few lines in the Benenden Magazine seems to have come around remarkably quickly! Luckily there has been a lot going on in the parish over the last nine months, especially with regard to the Benenden Neighbourhood Development Plan, of which I am a Steering Group member.

The Regulation 14 draft has reached its very final stages now and will be published by the time you read this article. I never envisaged such an enormous amount of my time would be spent assisting with its production. It is relevant to talk about our NDP here, because the Parish Council takes ownership of it and is responsible for its implementation, even though it has been written by different members of the community. There are three council members on the NDP Steering Group but all our parish councillors have reviewed the plan and made comments where necessary.

The other important monthly duty that we carry out is the review of the planning applications received from Tunbridge Wells Borough Council (TWBC). This involves going to visit every application site, talking to local residents where appropriate, and applying the latest rules and regulations stipulated by TWBC and the National Planning Policy Framework, a document produced by the Government. These are then discussed at our monthly Parish Council meetings and each planning application supported or recommended for refusal, based on a majority decision.

Our latest project is to review the highways within the parish, making improvement suggestions to Kent County Council so that any funds raised from developers of our new housing can be more efficiently channelled into the projects that we would like to see implemented.

Graham Beveridge, Parish Councillor

Caroline Levett, Benenden Parish Council Clerk
01580 240371 clerk@benendenparishcouncil.org

For more information see our website www.benendenparishcouncil.org or find us on facebook

Parish Council Meeting
Monday 16 September 2019,
Iden Green Pavilion, 7pm

Church Calendar

St George's Church

Rector: Revd David Commander 240658 revdavidcommander@gmail.com (day off: Thursday)

Churchwarden: Tracy Claridge 240454 maisonsicheluk@tlclaridge.co.uk

Churchwarden: David Collard 241944 julia.collard@btinternet.com

www.benendenchurch.org 850849 benendenchurch@gmail.com

Please inform the Rector or Churchwardens if you, or anyone else, is ill or would like a visit or home communion.

Sunday 1 September	8am Communion	10am All-age Communion	5pm Choral Evensong 6pm Organ Recital
Sunday 8 September	8am 1662 Communion	10am Morning Worship	5pm Evening Prayer at Mission Church
Sunday 15 September	8am Communion	10am Sung Eucharist	4pm Messy Church
Sunday 22 September	8am Communion	10am Morning Worship	
Sunday 29 September	8am Benefice Communion	10am Matins Service	

Mission Church, Sandhurst

Rector: Revd David Commander 240658 revdavidcommander@gmail.com (day off: Thursday)

Every Tuesday 10am Communion

Iden Green Congregational Church

Elder: Tobin Bird 240027 www.idengreen.org.uk

Sunday Services 10am Morning Worship 5.30pm Evening Worship

The Roman Catholic Chapel TN17 4EL

Fr Barry Grant 713364 www.sttheodore-cranbrook.org

Masses 9am Sundays 7.30pm Holy Days

From the Parish Registers

Baptism 25 August Sophie Chapman

Weddings
3 August Helena Booth-Clibborn and Jamie Stephenson
16 August Langelihle Alison Mpofu and Michael Bird
17 August Katherine Dow and Henry Warner
31 August Catherine Lambert and Craig Foreman

Funeral
2 August Roger Grant Interment
10 August Alan Barker Interment

Rector's Letter



September, the time for new starts

September is - in the school calendar at least - a time for new starts. New starts for children: with new classes, new teachers, perhaps even a new school to get used to; and when moving on to a secondary school that may even involve a new journey, and certainly new independence. It is also a time of new starts for teachers and support staff: with new children, new curriculums and new targets to get used to. Also new starts for parents and carers: getting used to new schools, new timetables, new routines, and new teachers to build relationships with.

This September, however, is even more exciting in both our villages, with two major new starts to enjoy.

Benenden Church of England Primary School, at long last, has the anticipation of starting this new academic year in a brand new building. After all the years of discussion and planning, it has happened. How exciting is that?

In Sandhurst we are starting 'Blend', a weekly after-school club for children in years seven to nine, where children from the primary school can come back together, hang out with old friends and catch up. All in a relaxed, friendly environment in the Mission Church with refreshments, such as milkshakes, fruit and snacks, and games like table tennis, pool and an Xbox. More excitement!

Both of these have been long needed. I hope and pray that everyone will get behind these developments and that they will, in their separate ways, flourish and serve our children and the community.

I also hope that following the summer break, the holiday, or the change of routine, you will also be energised and ready for a new start. Our summer did not go quite as we were expecting; my elderly father Bill (whom some of you will have met) passed on from this life in July. He had 'a new start', following the Christian belief that death is something we pass through - a moving from this way of living life to another way of life. And Helen and I, in turn, now have a new start as we try to get used to life without my dad as part of it. Thank you for all the messages of love and support that we have received.

But going back to the thought of a new start for you, could I put out another plea for help in the churchyard please? Once again I have received a few letters (one anonymous, which doesn't help) about the state of the churchyard in both parishes, but I also frequently receive comments about how beautiful the churchyards are. As I've said before, the churchyards seem to generate a 'Marmite' reaction, but both are maintained by the hard work of volunteers. Could you make a new start and get involved helping to look after one of the churchyards? If you can, please get in touch.

Revd David Commander, Rector



OFFERING LONG-TERM RESIDENCE,
CONVALESCENCE & RESPITE CARE
FOR INDIVIDUALS AND COUPLES
WHO VALUE PRIVACY, LUXURY
AND HAPPINESS

PEASMARSH PLACE For Brochure & Details

Church Lane, Peasmarsh, Rye, East Sussex TN31 6XE Tel: 01797 230555

All Under One Roof at

Slaney Place Farm, Headcorn Road, Staplehurst TN12 0DT

Mister Theobald's Furniture Showroom

www.theobaldsfurniture.co.uk

Quality British-made Sofas & Chairs at DISCOUNT PRICES

Free delivery

Lift and Rise Recliners - home visits can be arranged

Armchairs * Footstools * Sofas/Sofabeds * Choice of fabrics/leather

Cushion interior replacement service in feather, sprung, fibre, FR. Foam etc.

IN ASSOCIATION WITH **Theobald Upholstery** OF STAPLEHURST, est. 1975

Telephone: 01580-890055

MOST TYPES OF FURNITURE RE-UPHOLSTERED AND REPAIRED
BY EXPERT CRAFTS PEOPLE - HUNDREDS OF FABRICS TO CHOOSE FROM

**P.F. WARD
& SONS**
FAMILY BUTCHERS

**FRESH LOCAL
PRODUCE**

**VARIETY of HOME
MADE SAUSAGES
& BURGERS**

Phone: 01580 240612

R.M Sports Therapy

*A professional mobile service
provided by fully insured
Graduate Sports Therapist offering
injury and posture assessment,
treatment and exercise rehabilitation.*

Your aches and pains from overuse
or sport participation can be eased
through massage, mobilisations,
stretching, taping and
exercise rehabilitation.

Rebecca Manford (BSc Hons MSST)
07923 965601



WOW

WOODFIRED OVEN WONDERS

**A Wood Fired Oven can provide
fantastic, fresh and fast food for you
and your guests.**

We are local to Benenden and can cater
for private parties, wedding receptions
and events of all kinds.

Most people only think of pizza, but
there are lots of alternatives.

Give me a call to discuss on:
01580 279000 or 07788 279000
info@wowcooking.co.uk

or visit our website
www.wowcooking.co.uk

Private Care Service

Town & Country
Homecare Limited
Caring for people in their own homes



**Domestic
Care
£9.77
per hour**

Our Private Care Service offers
tailored packages of personal care
that can help people stay in their
own home for as long as possible,
rather than going into a care home
before it's really needed. We assist
those who need help due to
frailty, disability or illness to live
as independently as possible, with
comfort & dignity, in their own home.

www.townandcountryhomecare.co.uk

For a free assessment
of your care needs or to
receive your brochure
Call us on 01580 762244



Town & Country Homecare Limited
102a High Street, Tenterden, Kent TN30 6HT

Just a Thought



The keys of life

For many of us an inevitable aspect of going on holiday is the need for keys. Keys for locking up the home whilst away (checking that the neighbour has a spare); for the luggage in transit; and for the house, hotel room, apartment, villa, holiday home, caravan or whatever it is at the other end - although perhaps not for the tent. Time to check where the required keys are to be found. Some people are very good at this, however for others it is a bit of a challenge. In our case the household side of things is sorted and we even have keys for the windows in each room, but it is the luggage keys that can be a small problem.

Time to find the box or drawer that contains the keys of a lifetime - or so it seems. How is it possible to accumulate so many keys? How is it that there should be so many different kinds of key? At first it appears fairly straightforward. One knows the make of luggage so just look for that key. But it doesn't work out like that. Either there is no name on the key or it has the name of one of half a dozen well-known makes that could belong to anything.

The next possibility is that the key has a label attached, so one starts to pull out all the keys with labels, homemade or otherwise, hanging from a string or chain. But here begins another adventure. In fact one enters another world, the world of the past. Memories come flooding in: the key to the shed long since demolished; to a much-loved old banger; to a great aunt's bureau, elegant but no longer practical; to the house in St Helena, a bit late to return that now; to a responsibility long since handed on - how did that happen? However by far the greater number of keys have no labels attached at all. That is not even touching the plethora that obviously belong to long-lost padlocks of one sort or another. Why do we keep all these keys and not throw them all away?

In the old days, long ago ("when you were a little girl", says my youngest grandchild), there wasn't the need to have so many keys. Now it seems that absolutely everything has to be locked in some way. But then again the very nature of keys is changing. They are morphing into plastic cards. Offices, hotel rooms, hospital wards, lockers and gates all seem to require them. Indeed, it would appear to be good for security, so why not? They are also light and easy to carry. But ultimately I can see them going the way of all keys - stored in a box with little indication of their original purpose.

There is one other kind of key with which we are increasingly faced in this digital age, and that is the 'password'. Perhaps I should leave that nightmare for another time!

Sue Fisher



Topsoils | Composts | Barks | Grass Seed | Aggregates | Decorative Stones
Small Bags, Bulk Bags or Loose Loads
Delivered or Collected

gardenscape

Tel: 01797 253666



**Iden
Landscapes**

Jay Weekes

Idenlandscapes@gmail.com

01580 389531

07720 817577

Hadlow trained and experienced in
Soft Landscape and Landscape Construction
Competitive Prices!

- Border Design
- Patios and minor Brickwork - Pointing
- Decking
- Winter Garden (one-off blitz)
- Hedge Work
- Fencing
- Sheds and Shed Bases
- Turfing
- Log Splitting
- Rose and Fruit Tree Pruning
- Planting up - Help with choice of planting

See above for contact information and feel free to contact for more details, quotes and prices. Often same day responses via email.

SPECIALISING IN LETTING PROPERTY IN THE WEALD OF KENT



RICS



ARLA

**Lambert
& Foster**

COUNTRY ■ TOWN ■ VILLAGE

Our experience, expertise and local knowledge places us in the best position to professionally guide landlords and tenants through the process of letting property.

We provide a full range of services and are always happy to discuss the most appropriate package to suit your particular needs. We also offer a free rental valuation and advice service in relation to letting your property and a **"no let, no fee"** guarantee.

CRANBROOK 01580 712 234 lettings@lambertandfoster.co.uk

39 High Street, Cranbrook, Kent | www.lambertandfoster.co.uk

HIGH STREET OFFICES ALSO AT PADDOCK WOOD, KENT & MAYFIELD, SUSSEX



rightmove
find your happy

**Caring for
your pet's
health every
step of
the way**



Hawkhurst
Veterinary Surgery
01580 752187

Tenterden
Veterinary Surgery
01580 763309

Surgeries also at Rye, Ashford, Lydd and Wye

CINQUE PORTS VETS

www.cinqueportsvets.co.uk

24 Hour/365 Days Emergency Service available

24 Hour/365 Days Emergency Service

**Providing diagnostic
and surgical
services
throughout
Kent and
East Sussex**

Mobile and
Clinic based Services



**MILBOURN
EQUINE VETS**

www.milbournequine.co.uk

Hawkhurst

01580 752301

Ashford

01233 500505

Also at Rye and Canterbury

News and Events

New Primary School open morning

Saturday 14 September, Benenden Primary School, 10-12noon

We would like to thank the whole of the Benenden village community for your patience and understanding whilst our amazing new building has been constructed. We would like to invite you to visit the new school on Saturday 14 September from 10am to 12noon to see the facilities that our children will be able to enjoy.

At the same time, we will be holding an early Macmillan coffee morning. Donations of cakes will be very welcome

We look forward to welcoming you.

Chris Smith, Assistant Headteacher

New art classes

A new series of weekly art classes start in the village hall on Wednesday 18 September 1.30-3.30pm. I am a professional art teacher moving to Benenden from Norfolk and during the sessions I will cover drawing and painting; various printing techniques; sculpture and three-dimensional construction. However, the most important topic is whatever you, as an individual, wish to focus on and I will provide plenty of personal tuition. If you wish to do nothing but flower painting you will be encouraged to do precisely that, but I am sure you will be interested in what is going on around you.

Each session costs £15, but the first one is £8 during which I will discuss what you prefer doing and introduce a 'surprise' activity for the remainder of the session.

Michael Goater

mgoater.restoration@gmail.com



YOUR FACE IN LIGHTS?
THE WORLD-FAMOUS
BENENDEN PANTO RETURNS IN
FEBRUARY 2020

If you fancy a role auditions are open to all on
Sunday 8 September 2019
2.30pm onwards for under 16s
4.30pm for adults
Benenden Village Hall
Do come along!
For more information:
enquiry@benendenplayers.co.uk,
or see our Facebook page

Panto auditions

Panto season rolls round again, and this month preparations start to deliver another world-first from 30 January-2 February 2020. Bev Beveridge has been busy writing over the summer and, while the title has yet to be announced, the story will be (roughly) along the lines of 'Sinbad'.

If you fancy treading the boards with the award-winning Benenden Players, then please come along to the auditions on Sunday 8 September in the village hall. Juniors (9-15 years) to come along at 2.30pm and everyone else at 4.30pm. If any youngsters fancy singing a solo in the panto, then please learn the first verse and chorus of 'Under the sea' from the Little Mermaid for the audition.

Village lunch

Tuesday 17 September, Benenden Village Hall, 12.30pm

Our village lunch costs £5, is open to all ages and everybody is welcome. If you would like to come along, or if you enjoy cooking and would like to join the band of volunteers, we would love to hear from you.

Sheila Hume 240838

THE BIKE WORKSHOP

B E N E N D E N

SUMMER AROUND THE CORNER?
TIME TO GET THE BIKE
SERVICED & CHECKED!

REPAIRS, SERVICING & NEW
BUILDS BY A QUALIFIED &
INSURED MECHANIC.

GILES CLARK
T: 01580 240202 | M: 07968 181921
GILES@THEBIKEWORKSHOP.COM
WWW.THEBIKEWORKSHOP.COM

cytech
LEVEL 2 TECHNICIAN

Greenacre Landscapes

Creating Beautiful Gardens
since 1963

Specialists in Private Garden
Design & Construction

Patios - Brickwork - Decking

Stonework - Ponds/Lakes

Water Features - Planting Schemes
Groundworks

Detailed Plans - Portfolio Available
Free Consultation

www.greenacrelandscapes.co.uk
01580 240085 01892 722412
Furnace Lane Nursery, Furnace Lane,
Brenchley, Kent TN12 7BX



Your Local Independent Vet

Personalised, compassionate and caring service



Consultations at Pets World
Dog, cat and rabbit vaccinations
Home visits
Dignified at home euthanasias
Pet Health Plans
In-house blood tests

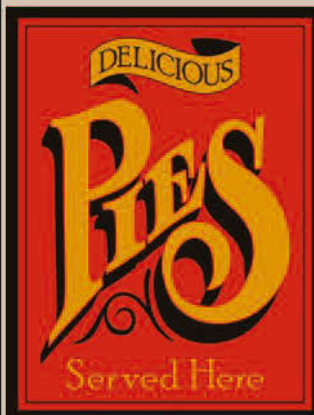


01580 230585
www.wealdhomevets.com
info@wealdhomevets.com

Like us on Facebook and follow us on Instagram

The Bull at Benenden... *A warm welcome awaits!*

Great British Food & Drink in a Great British Pub. *vegetarian & vegan dishes also available.*



01580 240 054 . pub@thebullatbenenden.co.uk . www.thebullatbenenden.co.uk

THE BENENDEN REVUE

for 1 night only!

SATURDAY 28 SEPTEMBER AT 7.30PM

VILLAGE HALL: DOORS OPEN 6.30PM

CABARET-STYLE SEATING | BAR | RAFFLE

BYONB (BRING YOUR OWN NIBBLES, NOT BOOZE)

BENENDEN JAZZ

OLD FAVOURITES – NOT JUST THE MUSICIANS!

COMEDY CAPERS

GARRY CROUCHER, TRACY CLARIDGE & FRIENDS, PETER ELLIS,
JOY ROWLANDS, THE TWO RENNIES

MARVELLOUS MUSIC

CHRIS PARKINSON
THE WALRUS SONG

KAREN SAUNDERS
FLUTE ARIAS

LOUISE CLARKE
SONGBIRD

THE TWO IANS
BEAUTIFUL MARILYN MONROES

ANDREW & HIS BAND
RHYTHM & BLUES

THE THREE TENORS
LES MIS MEDLEY

PANTO HIGHLIGHTS

TILLY MILNE, DEBBIE KATIS, BONNY SULLIVAN & PIERRE GAUTIER

EVERYBODY WANTS TO BE A CAT, FAITH, MAYBE THIS TIME,
YOU'VE GOT A FRIEND IN ME, COME ON OVER TO MY PLACE

MARK REID
MASTER OF THE HOUSE
I FEEL GOOD

IAN MALAUGH &
PETER ELLIS
CHU-CHI FACE

PETER ELLIS
MODERN MAJOR GENERAL

DANNY LE STREET

SINGS HER WAY THROUGH THE 60S

AUDIENCE SING-ALONG

JOIN IN AND SING SOME OF OUR FAVOURITES SONGS WITH OUR FABULOUS PANTO SONGSTERS
LYRICS PROVIDED

TICKETS: £5 & £3 (14 AND UNDER)

BENENDEN'S SHOP & WWW.BENENDENPLAYERS.CO.UK

PROFITS TO THE PLAYERS' STAGE LIGHTING FUND.

MEET YOUR MP Helen Grant

Helen Grant, MP for Maidstone and the Weald, holds regular surgeries around the constituency. If you would like to arrange an appointment to discuss an issue of concern to you, please e-mail Helen at helen.grant.mp@parliament.uk or telephone **020 7219 7107**.

www.helengrant.org

Produced by Helen Grant MP, House of Commons, London SW1A 0AA

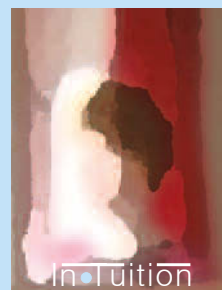


Private Tuition in Benenden

Boosting Confidence & Developing Potential
With **Clare Leek**

clare.intuition@btinternet.com

07711 619536



Primary Subjects
Singapore Maths
French

Hemsted cars professional private hire

**Providing private hire and taxi service
from Benenden.**

We offer a reliable, professional service including airport and station transfers, courier service and informative tours for visitors to the area across Kent and Sussex.

Fully insured, licensed and DBS checked.

Contact us to discuss availability
and tariffs on:

01580 242898 or 07707 242898

or visit our website
for further information

www.hemstedcars.co.uk

Divorce Support

Emotional support throughout
the divorce process
Help with paperwork including
Form E

Divorce Recovery

Guiding you through the pain,
isolation and loneliness

Divorce Coaching

Building a new life and
moving forward

Support for Men and Women



Julie Wilson

JW DIVORCE SUPPORT

www.jwdivorcesupport.co.uk

julie@jwdivorcesupport.co.uk

07977 777306



Residential Sales • Management and Lettings

01580 242700
wealdproperty.net



Recently SOLD BENENDEN £775,000

**LEADERS IN
LOCAL PROPERTY
SINCE 1985**

Weald Property has been successfully handling exceptional local Property whilst supporting the villages of Benenden and Rolvenden since 1985. Offering a complete, professional and personal service in Residential Sales, Lettings and Property Management Agency, our successful and unique approach is not to be found on the High Street. Located at our inviting offices at Windmill Farm, Benenden Road, Rolvenden, we offer cost effective solutions for selling, letting and managing your Property.

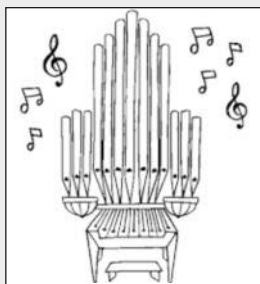
To benefit from our 30 years experience leading the way in Wealden Property, please call Alex Hill on 01580 242700 for a complimentary market appraisal.



Recently LET ROLVENDEN LAYNE £3,250 PCM



2 Windmill Oast, Windmill Farm,
Rolvenden, Kent TN17 4PF



David Birchenough

ORGAN RECITAL

Sunday 1 September 2019

St George's Church, Benenden

6pm

following Choral Evensong at 5pm



**THE FRIENDS OF KENT CHURCHES
SPONSORED RIDE AND STRIDE
Saturday 14 September, 10am-6pm**

By cycling or walking around Kent churches you can raise money to be divided equally between the Friends of Kent Churches and the church or chapel or your choice.

- Why not plan a route with your friends and family?
- Visit your church to pick up a sponsorship form and list of participating churches.
- Find some sponsors to pledge money for this important local cause.

You can sign in at your first church from 10am onwards and visit as many churches as you like.

Safety on the roads is paramount. We recommend high visibility vests.

For more information contact Alison Prall
240417 alisonprall40@gmail.com

Christian Aid week 2019

The amount raised for this year's Christian Aid week was £3,323. Although down on last year's record, this is still a sizeable and welcome contribution to the charity's important work. Thanks must go to all the collectors, to Benenden School, and, of course, to everyone who contributed.

Lesley Attwood has done the lion's share of the backroom stuff, thank you Lesley, your help has been invaluable as always.

Collectors we would love to see you at the Garden Party on Sunday 29 September (see below for details)

Tracy Claridge 240454

Christianaid@tlclaridge.co.uk

Thank You garden party

Sunday 29 September, The Rectory Garden, 3-5pm

There will be a garden party to thank all the Christian Aid collectors and also the helpers of the Benenden Village Fete in support of St George's Church. I would appreciate it if you could let me know as soon as possible if you are able to come along:

Tracy Claridge 240454

TLClaridge@TLClaridge.co.uk

Village hall highlights

September is always a fun time at the hall as we welcome back all our lovely regulars, which means once again our timetable is crammed.

We have two incredible new classes starting in September. If you love 'Strictly Come Dancing' then the first class, starting on Wednesday 4 with Amanda Beacroft, an ex-Latin and ballroom championship dancer, is for you. The class was designed by 'Strictly' stars Natalie Low and Ian Waite, who have taken the best of ballroom and Latin, mixing it with the latest proven ways to get fit fast. Suitable for all ages and abilities 16-70 plus. For further information check out www.beacroft.net.

The second is an art class starting on Wednesday 18, covering drawing and painting, printing techniques, sculpture, and three-dimensional construction with a professional art teacher. See page 9 for further details.

There are regular slots available mid-week, so if you are looking for a great venue to hold a club or class, please contact me.

The Farmers' Market in the village hall:

Tuesday 3 September, 9-11am

Tuesday 10 September, 9-11am

Tuesday 17 September, 9-11am

www.benendenvillagehall.org

Lorraine Jones 07419 989830

enquiries@benendenvillagehall.org



BEACON HALL HOUSE

LUXURY BED & BREAKFAST

Visit England 5* Gold with breakfast award

Julie Jex: 01580 240434 | jjjex@icloud.com
www.beaconhallhouse.co.uk

A delightful country home offering 5* bed and breakfast with a touch of luxury to visitors wishing to enjoy the beautiful Kent countryside.

Set within 7 acres of mature elevated gardens and paddock with splendid views over beautiful Wealden countryside.

Enjoy a swim in our heated outdoor pool (seasonal) or a game of tennis on our court within the grounds.

Relaxed evening suppers available by prior booking.

T.W. FUGGLE & SON

FAMILY FUNERAL DIRECTORS

Private Chapels of Rest

24-HOUR SERVICE

All arrangements undertaken with personal attention

Pre-paid funeral plans arranged through Golden Charter

20 Ashford Road, Tenterden – 01580 763340 – www.twfuggle.co.uk



A beautiful collection of rustic & vintage furniture and accessories available to hire for any location or event
www.villagevintage.co.uk

Smarden Physiotherapy



HPC Registered Chartered Physiotherapist with over 20 years experience treating musculo-skeletal problems and sports injuries

Ex dual international rugby player and former Wigan rugby league physiotherapist

Phone: 01233 770468

Mobile: 07763 208013

peterwilliams1@icloud.com

CHEESEMANS GARAGE

B. J. NASH



Vehicle Testing
Approved Station

BENENDEN, KENT

TELEPHONE
CRANBROOK 240583

JEFF TWORT

HOME IMPROVEMENTS
&
PROPERTY MAINTENANCE

01580 243174 / 07702137743

SARNDEN FARMHOUSE BED & BREAKFAST



Cosy farmhouse in idyllic rural location.

Double and twin rooms available all year round.

Home-cooked dinner by arrangement.

01580 240506

sarndenfarmhouse@gmail.com

www.sarndenfarmhouse.com

Cornhole tossing at the George Club

Not many of us will have heard of cornhole tossing, primarily because it is not a British game. Like bowls it requires neither youth nor athleticism, nor perhaps sobriety, which is probably a good thing given that it is one of the favourite events in the George Club's Saturday night calendar.

Also called bean bags, baggo, bags, or sack toss, this lawn game originates from the USA, which is where Paul and Angie Gregory first came across it, seeing hundreds of people playing it in the car park outside the stadium of the Arizona Cardinals before a home fixture. Such is the popularity of cornhole tossing that some people never actually make it inside to watch the American football, instead playing on in the car park while cooking and eating from their portable barbecues.

Quite simply cornhole tossing involves throwing (or tossing) a bean bag (or corn bag) through a hole on an angled board from a distance. Points are scored for getting the bag through the hole as well as for landing bags on the angled board.

Like all fun games, there are some who take it a little seriously, with some websites dedicated to the game going into detail about strategy and technique. Who knew that throwing a bean bag at a hole required mastery of one or more 'tossing styles': the sling toss, frisbee toss, overhand toss, jump toss or the fold over toss?

Needless to say, and in common with many apparently pointless games, cornhole tossing night at the George is a night full of laughter, banter and the occasional stray bag. Like all such pastimes, it is not the winning that is important (just as well in my case) but the taking part, having a laugh, leaving some of the stresses of the week at the door and connecting with fellow villagers.

Sound simple? Come and have a go. Keep an eye on the George Club poster in the shop for the next game.

Peter Ellis



**In Benenden
and Sandhurst**

**A different way
of being church
of doing church**

Come along on Sunday 15 September
This month at St George's Church, Benenden, 4-6pm

Aimed at all the family ... whatever your age.
Have fun being church together, doing crafts together,
worshipping together, and eating together.
The first hour is the craft stuff.
Then we have a short time of informal worship.
Finally we'll sit down and eat a meal together.

Please come and join us. You do not have to get messy,
just have fun!

Revd David Commander, Rector
01580 240658 revdavidcommander@gmail.com

Talking Shop

The Great Benenden's Bake Off!

When a jolly bunch of shop volunteers gathered last month for what they thought was to be a nice relaxed evening with drinks and nibbles, little did they know what was in store. The tables were laid up with baking ingredients and six unsuspecting men were presented with aprons and told to wash their hands, still unaware of what was in store until Penny, in best Mary Berry style, announced that they were to make scones.

They rolled up their sleeves and got stuck in while the rest of us enjoyed the spectacle. While the scones were cooking, we were given useful information about shop security and new equipment.

After much deliberation and posturing, judges Paul Tolhurst and Martin Pexton made their choice; there wasn't a soggy bottom in sight!

The evening concluded with more socialising and fun, which is to be expected with the great band of people who give their time tirelessly in order to keep Benenden's shop thriving. Many thanks to all who came and all who organised it. Any of you who are thinking of volunteering and haven't yet come forward, please do.

Finally, great news for all beer lovers. We now stock Harveys' best bitter and IPA. Make an orderly queue please.

Bev Beveridge

fixing leaking taps to complete kitchens & bathrooms ~ radiator cleaning & maintenance ~ tiling ~ curtain poles ~ swimming pools ~ doors & locks ~ general carpentry ~ paintwork repairs ~ fencing ~ patios ~ mowing ~ from


Pipes & Nails

- Home • Garden •

Property Maintenance
Plumbing & Handyman Service

Local & Trusted
 ~ We'll take **care** of your home ~
 Fast, local emergency help.
 No job too small.
 No call-out charge.

Chris Leach 07919 143755
 leachfamille@yahoo.co.uk
 www.pipesandnails.com



Hannah's Garden

www.hannahsgarden.net

SCENTED AND SEASONAL
 ABUNDANT VARIETY
 ENGLISH GARDEN FLOWERS

WEDDINGS + BOUQUETS + DIY + ONLINE
CALL: 07958 081915

J. PERIGOE & SON

FUNERAL DIRECTORS

PROUD TO BE
 SERVING THE COMMUNITY
 SINCE 1965

(Proprietor: West & Coe Ltd)

Your local, family owned Funeral Directors offering the highest standard of care and facilities to every family we serve.

THE Independent Way in association with
Golden Charter
 Funeral Plans

By choosing 'The Independent Way' funeral plan, we are, able to provide you with not only all the benefits of a pre-arranged funeral, but it also gives you the opportunity to meet with us and be given the same 1 to 1 dedicated support and attention we provide to all our families.

The key benefits of the funeral plan include:

- Paying today's prices for a service you may not require for many years.
- Helps ease the worry of funeral payments at the time of need.
- Your wishes are fulfilled by a proven partnership.
- By entrusting us with your wishes, you can rest assured that you are in good hands and that your wishes will be carried out to the letter.
- Peace of mind. Knowing that you have saved your loved ones this responsibility during sad and difficult times.

We are always able to visit you at home to gently guide you towards making the right choice of funeral arrangements. To find out more about this opportunity and receive a brochure free of charge, please feel free to contact us.

J Perigoe and Son Funeral Directors,
 Bardens, Bank Street, Cranbrook, TN17 3EF.
01580 713636
 Dixter Road, Northiam, East Sussex. TN31 6LB.
01797 216306

Email – enquiries@jperigoeandson.com Website – www.jperigoeandson.com

J Perigoe and Son is a Trading Division of West & Coe Limited, 602 Rainham Road South, Dagenham, Essex RM10 8YP.

EVERYTHING OUTSIDE

Every job is treated with a professional, friendly and reliable service.

- FENCING
- MOWING
- HEDGE TRIMMING
- DRAINAGE
- CLEARANCE
- LANDSCAPING
- GARDENING
- DIGGER WORK
- CONCRETING
- TREE SURGERY

Free no obligation quotation / Fully Insured
William Smith
 T: 07795 465 861 / 01580 766232
 E: smith_25@hotmail.co.uk
 www.everything-outside.co.uk

INTERVIEW PRACTICE and CV WRITING

Retired City insurance company
 Chief Executive
 For university entrance
 or job interviews

Call Charles Hume on
 01580 240838
 charles.hume@btinternet.com

DBS certificated

Grants for students and school leavers

The Gibbon and Buckland Charity, which started in 1602 with the gift of the school house at the foot of the Green, still gives some support to the primary school, but uses most of its income to give student grants. These are available for any young person under the age of 25 who is resident in, and has been resident in, the parish of Benenden for not less than three years and either in further education or in other ways getting prepared for working life.

Trustees will also consider applications for grants for gap year projects of educational worth.

Latest date for applications 30 September. If you could benefit, or know someone who could, please ask for an application form at Benenden's community shop, or from the clerk to the charity:

David Harmsworth, Clerk 240683
gibbonandbuckland@gmail.com

Hospice in the Weald musical events

Tuesday 17 September, 3pm

Alexander Karpeyev will be returning to perform for the second year, playing Borodin, Liadov, Tchaikovsky and other treasures from his Russian homeland. Tickets by donation (minimum £16).

Wednesday 16 October, 3pm

Gil Jetley will be coming from Italy to present a premiere performance of his own arrangement of the Warsaw Concerto for solo piano. His programme will also include Bach-Busoni and Schubert-Liszt. Tickets by donation (minimum £16).

Reservations in advance only:

Gillian Davis 850384

St George's Church Harvest Lunch

Sunday 6 October, Benenden Village Hall,
12.30-3pm

The Harvest Lunch will follow the Harvest Festival Service which will start at 11am. Sample menu: smoked salmon terrine, chicken & gammon salad with new potatoes (vegetarian option available), lemon tart with fresh berries & cream. Tea, coffee & mints. Soft drinks are included. Wine & beer will be available to buy.

Always a popular occasion, so buy your tickets early (adults £7, under 12s £3.50) from:

Benenden's Community Shop, in Church or from
Lesley Attwood 243318 lesley.attwood@sky.com

Everyone Welcome

The Friends of St George's Church
are proud to sponsor a concert by

THE MUSIC SCHOLARS OF BENENDEN SCHOOL

Friday 11 October 2019
at 7.30pm in St George's Church

Tickets: £8 for adults - 16 and under Free
(ticket includes refreshments, a glass of wine/soft drink)

Tickets available at the door,
from Benenden's Community Shop,
or from Jo Clube 01580 242956 jo.clube@aviva.com

A unique recital

Not even the rain could dampen our spirits when we listened to Daniel Grimwood present a unique recital that featured Dvorak, Henselt, Liszt and a piano representation of an Indian sitar. He made a memorial tribute to Hilary Couch, who never missed our events, by playing one of my compositions. The 'Nocturne' has never sounded more beautiful.

We ended with tea in the garage. My grateful thanks go to Maureen Sadler and Hamish and Cynthia Brown who handled catering in difficult circumstances. The afternoon was a great success raising £537 for Hospice in the Weald.

SAINT RONAN'S SCHOOL

Hawkhurst, Kent • Founded 1883 • www.saintronans.co.uk

Boys & Girls from 3-13 • Day & Boarding • Forest School



Discover the magic! Email emmatv@saintronans.co.uk

or call 01580 752271 to book an appointment.

Reg'd Charity 1066420



WE ARE PLEASED TO OFFER

SKILLED GARDEN
MAINTENANCE,
PLANTING & PRUNING

BORDER DESIGN & ADVICE
SUPPLY OF OWN GROWN
TREES - SHRUBS -
CLIMBERS

WISTERIA A SPECIALITY

The Laurels Nursery, Dingledean, Benenden, Cranbrook, Kent TN17 4JU

Phone 01580 240463

www.thelaurelsnursery.co.uk

*FurGet Me Knots
Dog Grooming*



CARRIERS ROAD, CRANBROOK

07596 911331



furgetmeknotsgrace@gmail.com

Cakes & Chaos

Drop-in Cafe
& Toddler Group




St George's Church, Benenden
Every Friday during term time, 9-11.15am



Please come and enjoy lovely cakes,
real coffee and a selection of teas.
If you've got little ones, let them play
in the church.
Only £1 per family.

For more information please call
Rev'd David or Helen Commander 01580 240658
or email revdavidcommander@gmail.com
or helenjcommander@gmail.com



BODS

(Benenden Ordinary Dads Society)

Local school dads meet in **THE BULL**
on the first **FRIDAY** of every month
from 8pm
to catch up and have a few beers

All dads are welcome!

To be included on the email list, contact
Graham on graham_walden@yahoo.co.uk

Look forward to meeting new dads!

Iden Green and Benenden WI

In August some members visited the Blue Hen gardens where we were pleased to walk amongst the varied, beautiful dahlias, hydrangeas, roses and many other colourful flowers. We all had a very enjoyable afternoon and delicious cake and tea were very much appreciated.

Until we met Mr Mills, we were perplexed about which communities were in flux. All was revealed on 20 August when he entertained us with amusing anecdotes and reminiscences from the past. He reflected on advances (or otherwise) in technology, health and safety, medicines, transport and family life as they impact our communities. Members appreciated his sense of humour and empathised with many of his comments.

Captain Biggs will be coming to the Memorial Hall on 17 September to talk to us about 'Towing and Salvage' and we are also all looking forward to another special coffee morning at a member's house on 20 September.

Jackie Liffen 752232 WI@daisystar.co.uk

Help make the world landmine-free

MAG International (Mines Advisory Group) is a charity that finds and destroy landmines, cluster munitions and unexploded bombs in places affected by conflict. Since 1989, MAG has helped over 18 million people in 68 countries rebuild their lives and livelihoods after war. However, 20 people are still blown up by landmines every day, of which around half are children

Iden Green resident Barry Bassett is starting his third year of raising money for the charity. Over the last two years he and his band of 'Superheroes' have raised £60,000 and now they are cycling from London to Bristol on 31 August-1 September and then from London to Amsterdam on 10-11 September. They just need to raise £2,500 to meet this year's target of £25,000 so if you would like to donate to this worthy cause please visit:
www.vmi.tv/superhero



Our Doctor will see you now

25 minute
appointments
for £95

Fitting a GP appointment into your busy schedule can be tricky, especially if you're feeling under the weather. Benenden Hospital offers flexible appointment times and 25-minute slots, so there's plenty of time to discuss any concerns or questions you may have.



For more information please visit www.benendenhospital.org.uk/gp

The Benenden Hospital Trust is a company limited by guarantee.
Registered in England, number 3454120. Registered charity number 1065995,
Registered Office, The Benenden Hospital Trust, Goddards Green Road,
Benenden, Cranbrook, Kent TN17 4AX

☎ **01580 242 521**

✉ hello@benenden.org.uk

📱 benendenhospital.org.uk/gp




Namaste Kids & Teens Yoga

Fun & lively classes
Qualified from 2yrs to 18yrs

Teaching in Benenden Village Hall,
Benenden Pre-School
& local schools.

email: Hayley@namastekids.co.uk

 [@namastekidsteens](https://www.facebook.com/namastekidsteens)

FREE
Trial
Class
Available



APPLE PIE FARM STORAGE

Short and long term storage
requirements solved!



Storing furniture ? Re-decorating ? Uncluttering ? Renting your house out ? Ideal for storing garden machinery, sports equipment etc.

Talk to us about our storage, delivery and collection of your accounting data.

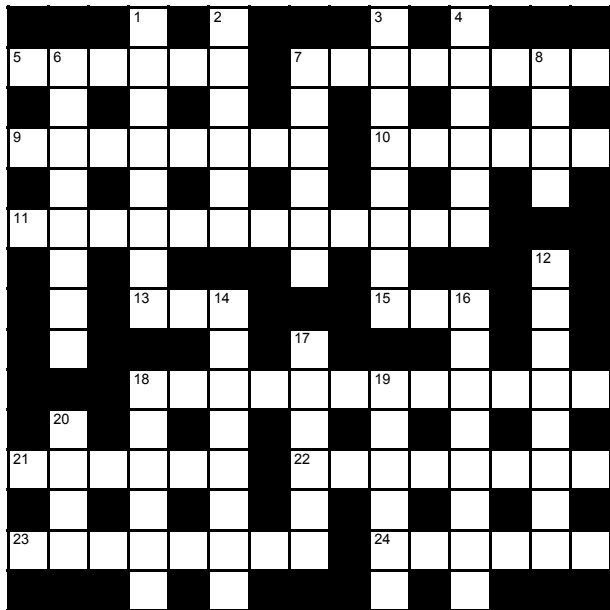
Speak to us on **01580 388754** or visit our
website: **www.apfcontainerstorage.co.uk**

UNIT 14 APPLE PIE FARM, CRANBROOK ROAD, BENENDEN, TN17 4EU
Telephone: **01580 388754** • Mobile: **07515 649688**



MINDBENENDERS By ASCII

CROSSWORD No15 (Tricky)



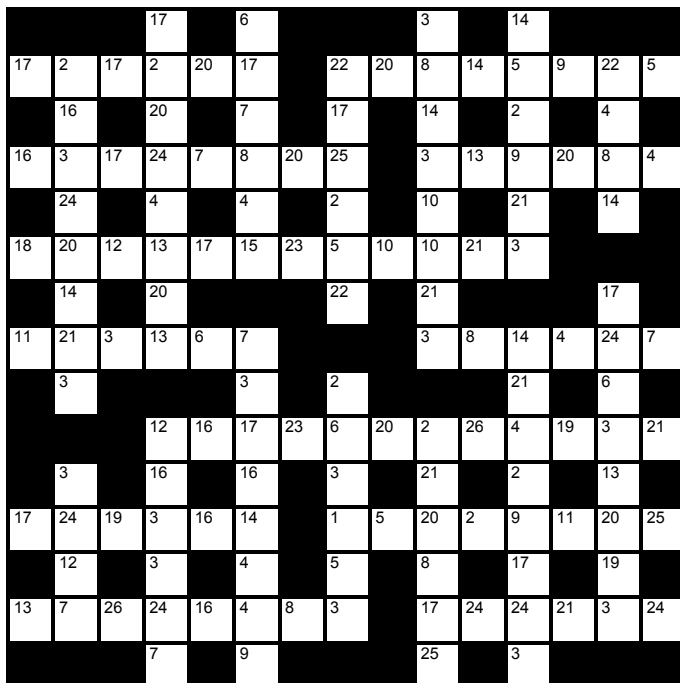
Across

- 5 Way to catch the latest news? (6)
- 7 Sorry, no chance to dance (8)
- 9 Castle suitable for a proper ball, say, to perform 7 across (8)
- 10 Chase after gravel pit (6)
- 11 Lines heard in 7 across, possibly indicate the bar? (12)
- 13 Prepare to pot (3)
- 15 Source of financial help for former furniture maker in trouble? (3)
- 18 From poor sub-prime gene to the ultimate in existence (7,5)
- 21 Are after container suffering impact damage? (6)
- 22 Resting place for fugue and toccata combined (8)
- 23 Leaderless rock band, call for American revolutionary to infiltrate auction house (8)
- 24 Customs without income from the sea (6)

Down

- 1 Con men I'm remembering with a phrase (8)
- 2 Writer, apparently strict and severe, unleashes bitter and lemon character? (6)
- 3 Iraqi IUD, shaken, not stirred. Bit rum! (8)
- 4 He who created them Oz artworks such as 7 across (6)
- 6 Fish confounded as he rose (3,5)
- 7 Calcium, lithium and acidic ruler (6)
- 8 As usual, can't decide between 14th and 13th letters (4)
- 12 Confused con men go to reveal Caesar for example; or Cicero (8)
- 14 Former spouse carries out tasks well (8)
- 16 Power pack to flee cull in disarray (4,4)
- 17 New scam from U.S. right wing (6)
- 18 The more attentive are firm in the core (3-3)
- 19 Make something necessary; unfortunately, in late (6)
- 20 Regret after tea? No lie! (4)

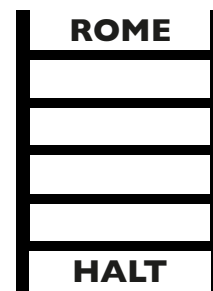
CODEWORD No15 (Moderate)



1	2	3	4	5	6	7	8	9	10	11	12	13
	C				H	Y						
14	15	16	17	18	19	20	21	22	23	24	25	26

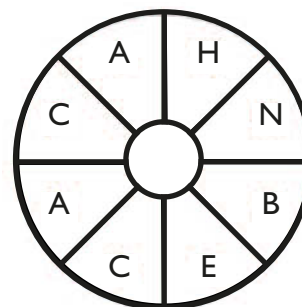
Each number represents a letter. Break the code and complete the grid. Three letters have been given to help you.

STEP CHANGE



Change the word at the foot of the ladder into the word at the top by altering only one letter at a time.

NINE FROM EIGHT



Find the missing letter at the centre of the wheel to create a nine-letter word. CLUE: Party Time, by God!

Bargain Carpets & Floors

Carpet, Vinyl, Laminate and LVT supplied and fitted at reduced rates

- Same choice as any shop but up to half the price
- We can move your furniture for you and take away your old flooring



For free home sample viewing
and estimates please call Stuart or Lisa

01424 855882 / 07734 659834

bargainfloors@hotmail.co.uk

www.bargainfloors.co.uk

Checkatrade.com
Where reputation matters

J WILSON
GARDEN SERVICES & HOME MAINTENANCE

- Garden Maintenance
- Hedge Cutting
- Weeding & Pruning
- Mowing & Strimming
- Patio & Decking Cleaning
- Interior & Exterior Painting
- One Off or Regular Visits
- Professional & Reliable Service
- Fully Insured

25% OFF FIRST JOB

07517 930 100
01580 240 010

K Jones Electrical 01580 848118

Domestic, Commercial, Industrial
Electricians
All work insured and guaranteed
Trusted locally for 40 years

APPROVED INSTALLER

kevin.kjoneselectrical@gmail.com

let the Bike take the strain...

UK Electric Bike Centre Ltd
BIDDENDEN AND BODIAM

www.ukelectricbike.co.uk
www.ukelectricbiketours.co.uk

ebike hire
ebike tours
ebike sales
ebike repairs

Telephone: 07484 744200
info@ukelectricbike.co.uk

Whatever you want to store...

...house sale & purchase not coinciding, travelling, house building work, paperwork overload or just "de-cluttering" to sell your house more quickly – we offer a friendly and flexible service in Cranbrook. With secure storage, competitive rates, all on one level and hassle free 24/7 access, contact us now!

BARN STORE
HIGH-SECURITY STORAGE

01580 713231
www.barn-store.co.uk

TOMPSETT LANDSCAPING
GARDEN LANDSCAPE AND MAINTENANCE CONTRACTORS

Tompsett Landscaping is a family run business which takes pride in offering a quality, professional, friendly and reliable service at competitive rates for all aspects of garden maintenance and landscaping.

Nick Tompsett 07746 672946
Rob Tompsett 07961 637275

E: info@tompsettlandscaping.co.uk
W: www.tompsettlandscaping.co.uk

PLEASE CONTACT US TODAY FOR YOUR FREE NO OBLIGATIONS QUOTATION

TN17 DOG walking

- Professional • Friendly Service
- Fully Insured • One-Off or Regular

www.tn17dogwalking.co.uk
07719 070864

DECORATING FOREMANS SERVICES LTD
est. 1970

Providing the complete Decorating Service

Mobile: 07836 254047

ELBA
ELBA PRIVATE HIRE - PERSONAL CARRIAGE

Town and Country
Travel in Style
Business and Social Pleasure

Allows you to drink like a Lord and leave like a Lady!

To Book Text:
07785 11 20 21

or Call:
01580 441 302

or Email:
book@elbaprivatehire.com
www.elbaprivatehire.com

"We go that extra mile"
Lady & Gentlemen Drivers

f t in G

Benenden School news

At the time of writing, it is that time of year when we are eagerly awaiting the girls' exam results. We wish all the girls the very best of luck on A Level and GCSE results days. Of course, there is more to school life than exams, but we want every girl to achieve her very best and we will continue to support the Class of 2019 as they embark on the next stage of their lives at university and beyond.

It has been a busy summer here at Benenden. We have hosted the Army Benevolent Fund's Summer Musical Party, the Benenden Tennis Tournament and several longstanding holiday lets, with children from South America, Austria and the Kent Music School making use of our campus.

This has all taken place while a great deal of construction and renovation work has been going on. We have been upgrading some of the boarding houses as part of our ongoing investment programme and our team of gardeners have been battling hard against the weather to keep the grounds looking magnificent - much like we have all been doing in our own gardens!

The main project during the summer has involved some great progress being made on the new School Hall and Music School. This time next year we will be looking forward to the opening of the wonderful new facility and, during the past few weeks, we have enjoyed seeing the building rising out of the ground and starting to take shape. It makes it feel very real indeed and the girls will be incredibly excited when they return from their holidays.

Samantha Price, Headmistress

JUNIOR TENNIS COACHING

Iden Green Tennis Club is now offering tennis coaching for Junior Members on Fridays during Term Time.



Who: Club Members of 6-18 years



Where: Iden Green Tennis Club



When: Friday Term Time groups from 5pm onwards



How much: £6 per session



Contact for further details:
eleonor.cochrane@btinternet.com

Iden Green Tennis Club junior membership is £20 per year.

Benenden Hospital news

Global Hand Washing Day is on 15 October and at the hospital we pride ourselves on our infection prevention and control, with zero cases of MRSA to date. It is a key focus for all our staff and is reinforced to visitors by the first piece of equipment they see on entering the hospital - a hand sanitising dispenser which we ask everyone to use.

Public Health England has warned that there is a potential threat of up to 3,000,000 routine operations a year becoming life-threatening if antibiotic resistance worsens. In healthcare we recognise that antibiotics need to be used to reduce the risk of infections for surgery such as hip replacements or to treat infections such as pneumonia. However, for some of us there is disappointment if a visit to the GP doesn't mean leaving with a prescription.

So, to raise awareness about the importance of handwashing, in hospitals and in our everyday lives, we have just launched an initiative to educate children in schools about good hand hygiene and the risks of getting infections.

Jane Abbott, Hospital Director



BALDWIN'S TRAVEL

Holidays - Cruises - Tours - Tailor Made Travel - Flights
Accommodation - Car Hire - Currency - Travel Insurance



**To find your perfect holiday,
contact your local
Baldwins Travel Branch**

Cranbrook 01580 714411

Tenterden 01580 764344

www.baldwinstravel.co.uk

Baldwins Travel may also be found in Tunbridge Wells,
Lewes, Maidstone, Sevenoaks, Tonbridge and Uckfield.

Geoff Tiltman

**Gardens & Groundworks
City & Guilds in Horticulture, NCT
Creating Gardens of Distinction**

Drives, Patios, Walls, Fencing, Pergolas,
Turfing, Regular Grass Cutting,
Unruly Gardens Made Tidy,
All Garden Construction and
Garden Maintenance Work Undertaken

Free Quotations - Keen Prices

Smarden 01233 770777 - 24 hours

Mobile 07775 694 963

geoff.tiltman@hotmail.co.uk

**EMPLOY A QUALIFIED CONTRACTOR AND
SEE THE DIFFERENCE IN YOUR GARDEN**

JACKSON-STOPS



LETTINGS AND SALES PROPERTY EXPERTS

Local Specialists with a Network of London & Regional Offices

FOR YOUR FREE MARKET APPRAISAL PLEASE CALL US



Lettings: 01580 720400

Sales: 01580 720000



cranbrook@jackson-stops.co.uk

www.jackson-stops.co.uk

ELECTRICIAN

Do you want a safe, reliable, reasonable priced Electrician?

Security Lighting - Smoke Detectors - Rewires - Extra Sockets

Fault finding - LED Lighting - New Builds & Extensions

NEW FUSE BOARDS

Fully insured qualified electrician. 6 year Guarantee



I assure you of a quick response
Call Nick now 01580 279907

email: nick@njhelectrical.co.uk

www.njhelectricalservices.co.uk



Idyllic rural location
Individual heated chalets
housing up to four cats
Also welcome rabbits,
guinea pigs, hamsters etc.
Come and see us before booking

Call Lucy on 01580 242961
or 07720 966374

email enquiries@forestfarmcathotel.co.uk

or see our website

www.forestfarmcathotel.co.uk



Jazz and Blues at the Pavilion

The weather forecast was spot on and, after a huge rainfall on the Friday night and Saturday morning of the 20 July, the skies cleared around noon and Iden Green was bathed in sunshine. Something of a novelty for this annual music event, which has had more than its fair share of damp weather over the years.

Some days earlier, Scott's Scaffolding had set up the stage and everything else (the sound tent, wiring, sound checks, beer and Pimm's tent, barbecue, fencing and many other bits and pieces) was made ready during the morning.

At 2pm the resident band, Benenden Jazz, opened with singer Amanda Porter who covered a mix of songs from Ella Fitzgerald to Patsy Kline, Caro Emerald to Cass Elliott. The duo, Birdseye Blues, with acoustic guitar and bass, played a short set of blues and folk before the guest band from Rye, Entertaining Mr Stone, presented an outstanding session with several original songs by singer/guitarist Steve Stone. Other members of the band are Paul Brasington on violin and Dave McKean on keyboard and vocals.

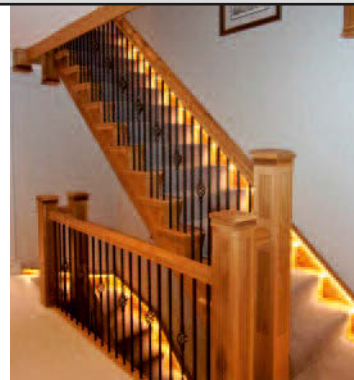
Dave McKean then played a half hour solo set on keyboard, using effects and pre-recorded vocals in a complex and accomplished way. Benenden Jazz, led by Graham Beveridge, followed with their second set featuring Debbie Katis, who brought a soft, laid-back touch to each song. Shortly after 7pm Entertaining Mr Stone returned to the stage to close the show, winning many new fans.

The good weather made for brisk business at the beer and Pimm's tent and at the barbecue, where Ward's burgers and sausages were flying off the griddle. This was probably the best Jazz and Blues event yet in the last eight years; the weather, music and atmosphere were just right.

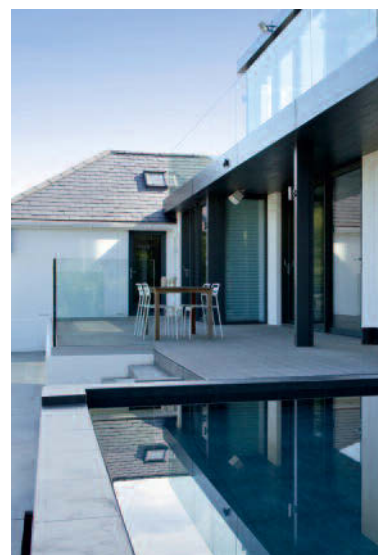
The £1,299 raised was split between the: Alzheimer's Society, Tenterden & District Day Centre and Iden Green Pavilion Trust. Thanks go to: the musicians, all of whom waived their fees, all the volunteers who helped with the event, the many who came and to Larkins Brewery, Scott's Scaffolding, and Mark and Lucy at The Bull.

Bill Lewis, Iden Green Pavilion Trust





paul.hagell@offsetarchitects.co.uk
01732 753333 07739 085487
www.offsetarchitects.co.uk



Benenden Village Hall

"Let your imagination run wild – the hall can be anything you want"!



Call Lorraine on
01580 243123 for details

www.benendenvillagehall.org



BENENDEN PRE-SCHOOL

www.benendenpreschool.co.uk

Every Weekday in St George's Hall, by Benenden Cross-roads

Small and friendly pre-school - Awarded 'Outstanding' by Ofsted
Large secure gardens with slide, sandpit, playhouse and more!
All weather suits provided, for daily outdoor play in all seasons
Experienced, qualified staff including Graduate Leader
Weekly 'Sporty Tots' session with qualified instructor
Regular trips throughout the year - Close parental partnership
Children may start from age 2 - Childcare vouchers accepted
Full/half days/lunch clubs to suit your child's needs

Tel: 01580 241137 email: supervisor@benendenpreschool.co.uk

A non-profit making pre-school run by a committee of parents

Established 1967 a Registered Charity No: 1027577

ETHIOPIA: THE CROSS AND THE COFFEE POT
Monday 21 October, St George's Church, 7.30pm

An illustrated talk by
Rosemary
Kobus van Wengen



Donations invited for
Water for Ethiopia

Benenden Bonfire & Fireworks

Save the date!

Saturday 2 November 2019

Gates open 5.30pm

Bonfire 6.30pm Fireworks 7pm

Benenden Bowls Club

Benenden Bowls Club is a friendly group that practises every Thursday night (6.30-8pm) and new members are always welcome. Find us behind the village hall (to the left of the bottle bank). Alternatively, come along and watch a game.

Our home fixtures for September are:

Saturday 7 v Guestling at 2.30pm

Sunday 8 v Harrietsham darts team at 2.30pm

Saturday 14 v Cross in Hand at 2.30pm

Saturday 21 v Peasmarsh at 2.30pm

Benenden Cricket Club

Our fixtures for September are:

Saturday 7 v Sandhurst H at 1pm

Saturday 21 v Kilndown and Lamberhurst A
at 1pm

Saturday 28 v West Farleigh A at 1pm

Cranbrook Choir wants singers

The Cranbrook Choir is looking for new singers for the new season which begins in September with rehearsals for Faure's magnificent Requiem. You don't need to be able to read music, all you need is a singing voice. So why not try a rehearsal or two at 7.30pm on Tuesday evenings in the Vestry Hall, Cranbrook to see if you like it. Many studies have shown that choral singing has an overall beneficial effect on your wellbeing so join us and experience the joy of singing with an 80 plus voice choir. We look forward to welcoming you and would be particularly pleased to enrol some tenors and basses.

Peter Anson 819323

www.cranbrookchoral.org.uk

CODEWORD No 15

1	Q	C	E	O	U	H	Y	M	K	Z	F	G	S
2													
3													
4													
5													
6													
7													
8													
9													
10													
11													
12													
13													
14	B	W	R	A	J	V	I	L	T	P	D	X	N
15													
16													
17													
18													
19													
20													
21													
22													
23													
24													
25													
26													

STEP CHANGE
ROME, SOME, SAME, SALE, SALT, HALT

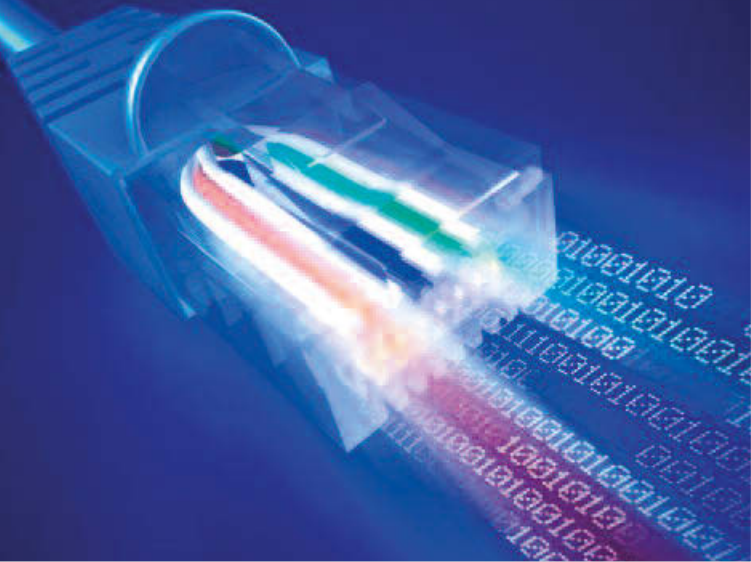
NINE FROM EIGHT
BACCHANALE

MINDBENDERS Answers

CROSSWORD No 15

Across: 5 Usenet, 7 Chaconne, 9 Balmoral, 10 Quarry, 11 Counterpoint, 13 Cue, 15 IMF, 18 Supreme Being, 21 Crater, 22 Catcomb, 23 Zepplin, 24 Inland

Down: 1 Mnemonic, 2 Sterne, 3 Daquiri, 4 Mozart, 6 Sea horse, 7 Caliph, 8 Norm, 12 Cognomen, 14 Expertly, 16 Fuel cell, 17 Neoncon, 18 Sit-ups, 19 Entail, 20 True



Benenden broadband unravelled

Like a lot of rural areas, Benenden suffers from areas of poor broadband performance, with many disappointed residents struggling to get a service of two-three megabits per second (Mbps). Fundamentally this is because the broadband signals are being carried over a network of copper lines originally designed to carry voice telephony (i.e. narrowband). Provided that you lived within five kilometres of the exchange the telephone service worked fine, but this is not the case with broadband, which operates at much higher frequencies using digital subscriber line (DSL) technology.

Standard broadband (using ADSL2+) can provide speeds of up to 24 Mbps but the signal degrades rapidly with distance such that if you are over three kilometres from the exchange connection speeds fall well below ten Mbps and continue to fall as distance increases. Note that the cable distance may be greater than the most direct route from your house to the exchange (this is because the network is designed to aggregate many small access cables into fewer large cables).

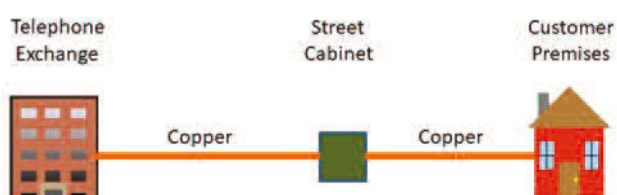


Fig 1

DSL - Speed declines with distance from Exchange

To provide faster connectivity (superfast broadband of 30 Mbps or more) fibre optic cable is rolled out to the street cabinet where DSL technology is installed for connection to the existing cable to the customer (FTTC or Fibre To The Cabinet). As the DSL equipment is typically much closer to the customer, coupled with the development of a new technology (VDSL2), higher speeds of up to 80 Mbps are attainable.

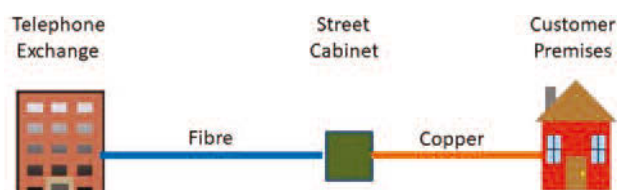


Fig2

FTTC - Speed declines with distance from Cabinet

All the cabinets in Benenden are FTTC enabled and, in addition, a new cabinet was installed to provide FTTC service to Iden Green (it's worth pointing out that customers are not automatically migrated to the new service - it must be requested). Unfortunately, "you cannae change the laws of physics" and the higher frequencies used decline over a shorter distance so that once you are three kilometres from the cabinet, speeds have again dropped below ten Mbps.

The optimum method of providing connectivity is to provide complete fibre all the way from exchange to customer premises (FTTP). Performance does not decline over distance and although current systems provide speeds of 330 Mbps to all customers, it is expected that this will increase as technology and demand develops. FTTP is therefore considered 'futureproof'.

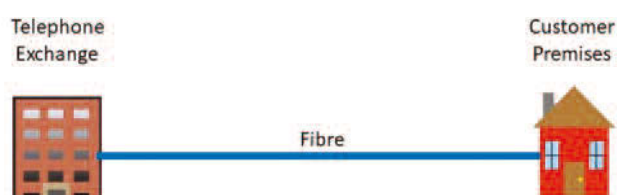


Fig3

FTTP - 330 Mbps regardless of distance



The UK Government has provided some funding to improve rural broadband performance. The spend is managed by Kent County Council (KCC) with the bulk of the money being awarded to Openreach. Previous funding targeted extending FTTC, however it has now been decided to provide subsidies only for FTTP.

Openreach are planning to roll out FTTP to four postcodes in Benenden:

- TN17 4BT Beacon Hill;
- TN17 4EU Apple Pie Farm;
- TN17 4LH Babbs Lane;
- TN17 4LG Forest Farm.

Funding is also available for 'Community Fibre Partnership' schemes jointly funded by Openreach and the local community. Grants (vouchers) are available for customers to contribute to the cost of installing full fibre broadband to their premises as part of a local group. The latest scheme which was announced in May 2019 is the 'Rural Gigabit Connectivity Scheme' (RGCS). This scheme provides £3.5K for each business customer and £1.5K for each residential customer towards the Openreach cost of providing connectivity to their nearest network fibre node. In some cases, the vouchers will completely cover the community portion of the costs. If not, customers can decide whether to top up the grant to ensure the project goes ahead. It is anticipated that, in September, KCC will announce that they will be providing an additional £1K grant for each residential customer on top of the £1.5K RGCS contribution, making available £2.5K per customer. A Community Fibre Partnership project is currently being progressed in Hinxden Road. George Chandler of KCC is happy to advise and assist other residents' groups who may be considering forming a fibre partnership.



New Universal Service Obligation

The Government's previous target of 98 per cent of customers obtaining Superfast Broadband is expected to be reached in spring 2020. From 20 March next year a new Universal Service Obligation will be introduced, giving customers a legal right to ask Openreach for a broadband connection of 10 Mbps or more. Providing that the cost of doing so does not exceed £3.4K then Openreach must comply with the request. Costs can also be pooled to share build out costs among a group of customers although Openreach can decide whether to deploy FTTC, FTTP or even 4G mobile to provide the connection. OFCOM expects that 80 per cent of eligible lines will be delivered within 12 months of being requested.

Peter Driver



Think different Go further

An incredibly nurturing day and flexi-boarding
school inspiring 3-13 year old boys and girls
to fulfil their extraordinary potential.
dulwichprepcranbrook.org



Dulwich Prep
Cranbrook



ANITA MEEKINS PRIVATE HIRE

FIRST CLASS SERVICE

Ordinary & Executive Vehicles
& 8 seater minibus with seat belts

All drivers & vehicles
licensed & tested

Long & short journeys
& courier service available

Business accounts welcome

Tel: 01580 240713

Mobile: 07774 672 043

anitameekinsph@btconnect.com

Webb's

45 & 51 High Street
Tenterden

Hardware, Garden and Cookware Specialists

Webb's Ironmongery Stores (Tenterden) Limited

HARDWARE and DIY

Specialists in power, hand and garden tools, plumbing, decorating sundries,
lawnmower repairs - brand new showroom

KITCHENWARE

Cookware specialists, garden furniture and barbecues
Gifts with a difference. Free gift wrapping

HOME and LINEN

Beautiful bed linen, towels, table furnishings,
babyware department and quality toys

**We guarantee you will not leave
Webb's empty handed!**

Tel: 01580 762132 email: mail@webbsoftenterden.com Website: www.webbsoftenterden.com



Spotlight on: Lindsay Roberts

Benenden Primary School's new headteacher

As the new academic year begins in a smart new building, so a new headteacher takes charge of Benenden Primary, and if there is one quality Lindsay Roberts will undoubtedly bring to this fresh challenge, it's enthusiasm - for the school, for the village and most of all for the pupils. "I believe in nurturing children to be the best they can be, and to achieve this everyone should have the same educational opportunity and that starts by ensuring that they can attend a good village primary school," she says.

Originally from Glasgow, then Sheffield (where she did her teaching degree), Lindsay moved to Kent over 30 years ago, lives with her husband and three children in Tenterden, and as a designated 'national leader of education', it soon becomes evident that she is passionate about teaching and offers vast experience of working in village schools.

After 18 years as deputy head in Pluckley she was asked to take on the role of headteacher at High Halden, which was categorised by OFSTED as 'satisfactory', with falling numbers at the time. "It was a challenge but within 18 months our rating improved to 'good' and the school became oversubscribed, with a waiting list," she recalls. In 2013 she became headteacher at Goudhurst and Kilndown and within six months it achieved 'outstanding' status.

Her success led Kent Local Authority to ask

Lindsay to provide leadership support to two other local schools while still being head at Goudhurst. "The best schools are where staff feel empowered and where there are good relationships underpinned by trust and good communication internally and externally," she says. "If you get the structure right and mentor staff you can start to see the benefits quite quickly, and by helping to turn other schools around, seeing sustained progress and the teams at both schools grow and the children respond positively, I knew then that I wanted to do more of the same."

The success of school-to-school support is supported by the Department for Education and governing bodies have seen that it is a model that works well, providing management, financial and learning benefits. For example, sharing a headteacher releases budget which can be used for new equipment and to grow the curriculum. Plus, teachers in single-year group schools - such as Goudhurst and Benenden - can link up, share experiences and support each other.

Bringing Benenden and Goudhurst primary schools under one permanent headteacher is a strategic decision by the governors of both schools, and she has been working with the teaching team here since April. "This is a long-term move for me which allows for long-term planning and I'm very excited about the prospect," says Lindsay. "Both schools have similar values and I am looking forward to working with the governors and staff to set the vision for Benenden's new school and strengthening the links with the whole community."

The new school year starts with 202 children (up from 170 three months ago), the addition of an extra class (now seven in total) and a new teacher. Although she is co-located, Lindsay will maintain a strong presence at both schools. "I believe it's important to be available for parents, pupils and teachers and my objective is to be in both schools every day."

Come and meet Lindsay and explore the new school at the coffee morning on Saturday 14 September. See page 9.

Ruth Clark



Sarah Andrew
and Laura Burles

Bringing rustic charm and hard work to the table

Ruth Clark looks at a small business that's transforming the look of local parties

It takes a lot of hard work to create the effortlessly rustic look that's so fashionable for

weddings and parties these days. From carpentry and joinery to accountancy and aesthetics, running a business like Village Vintage, furnishing social occasions with just the right tables, chairs and accessories, is no easy task, but it's a challenge two Benenden women have risen to.

What started as a hobby two and half years ago has grown into a thriving business for Laura Burles and Sarah Andrew, two entrepreneurial women with an eye for style. Each with two young sons, they met at pre-school in the village and both wanted to start a business that would fit around school hours and they could run from home. A chance opportunity to buy a set of 80 World War II folding chairs and matching tables inspired them to start Village Vintage furniture hire.

"After running lots of fund-raising events for Benenden Pre-School together, we knew that we were a good partnership with the same hard-working ethic," recalls Laura. "We've grown up in Benenden and love the style and feel of village fetes and rustic country events. At first, we didn't plan on being anything more than just a small hire business, but it has grown and grown."

As demand grew, they needed more tables and realised that, in order to



get tables that matched in height and look, they had no option but to make them. So, the dynamic duo, with absolutely no carpentry experience, learned how to make the perfect table and have produced 44 to date. "It was a massive learning curve, and a little bumpy at the start, but we found a winning technique and we are certainly confident now," smiles Sarah.

"Not only do we have a fabulous collection of tables and chairs now that can sit over 200 people," says Laura, "but we're really proud that we have shown our boys that women can wield hammers and drills too. It's an important message for them to learn early."

The growing trend for weddings in barns and garden marquees has stimulated the demand for rustic furniture and accessories that match the venue and produce atmospheric surroundings. So, over the past couple of years Laura and Sarah have acquired gorgeous vintage sofas and armchairs, richly coloured rugs, vintage china and



a wide range of accessories, such as candlesticks, that can transform a space into the perfect setting for any event, from a small dinner or garden party to a large wedding or birthday party. Shopping for new statement items is a favourite pastime when they get a chance.

In addition to providing furniture for hirers to set up for their own events, Sarah and Laura also provide a styling service. "For many barn weddings, the ceremony and the wedding breakfast take place in the same space so we can set up for the service and, while they are having drinks outside or in an ante room, we set up and style for the banquet, and then clear the space for dancing later. It's great fun and we thrive on the pressure," says Sarah.

It's worth a visit to the Village Vintage Facebook and Instagram sites to see their furniture in action. Social media has been very effective for them because it's so visual. "People find us and see and like what we do and get in touch," says Laura.

"It's the best marketing tool and we get most of our business that way. Recommendations also come through from the florists, venues and catering companies that we meet at events.



We work quite often with lovely local venues like The Great Barn in Rolvenden, The Paper Mill and The Oak Barn at Frame Farm in Benenden. But we often support small events and no order is too small."

"The business has grown faster than we expected, and we are now fitting out events all over Kent and into Sussex and Essex," says Sarah. "The busiest time is in the summer, but we have fantastic support from our husbands and family. We store everything in a lovely dry barn and make the deliveries ourselves in our trusty van. For a weekend event we tend to deliver on a Friday and collect on a Monday which means we are free to spend time with the family over the weekend."

Hire prices are very competitive. For example, if you want to hold a dinner party for 12 in your garden, then it would cost about £120 to hire everything: the tables, chairs, vintage crockery and a selection of accessories.

While the party and wedding season starts to quiet down, Sarah and Laura are already planning for next year: "We never expected this to be so much fun. It's the perfect business for both of us and it fits perfectly around our family life. We just love creating lovely spaces for special events. What could be better?"

www.villagevintage.co.uk
Instagram/Facebook:
[@villagevintagehire](https://www.instagram.com/villagevintagehire)





Food & Drink

Rise of no and low alcohol drinks

Alex Norwood Hill, owner of Weald Property in Rolvenden and self-styled 'Sober Sommelier', celebrates the gathering momentum of 'mindful drinking' and the variety of no and low (no-low) alcohol drinks now available.



In 2015 Ben Branson of 'nature company' Seedlip created an entirely new 'non-alcoholic spirit' category. Today the no-low alcohol drinks market is worth about £100 million a year and is predicted to grow exponentially in the next five years. For the often-forgotten non-drinker this is exciting news, as up until now the alcohol-free drink selection has been somewhat limited.

No more. Walk into most big supermarkets today and the no-low alcohol section has expanded, with offerings from well-known wine producers such as Torres and Hardys, as well as large brewers including Heineken and Peroni. The taste has improved considerably, especially in the beer, ale and cider category with sparkling wine and rosé not far behind.

As host, if you or some of your guests are abstaining, the key to success is to treat the non-drinker and their drink as you would a drinking guest. I'm two years alcohol free and I

know there is nothing worse than being give a warm, sweet fizzy drink while your fellow alcohol-sipping guests enjoy, say, a delicious cold mojito with crushed ice and freshly cut mint. As expectations rise and the exciting and innovative no-low market grows, non-drinkers are becoming increasingly vocal about society's attitude to this inevitable change in drinking culture and behaviour.

Here are just a sample of some of the no-low drinks out there now that I like. Frieixenet have just launched an incredibly fresh, light and fruity alcohol-free sparkling wine. Not too sweet, slightly honeyed with balanced citrus notes, it sets the bar in its category, achieving (in my humble opinion) the great accolade of matching, if not surpassing, the brand's alcoholic version on taste. To create an inspired alcohol-free 'Aperol' spritz simply add a measure of handcrafted Spritz

syrup with a twist of lemon.

Two of my favourite aperitif brands are Aecorn Apéritifs and Everleaf. Launched earlier this year, Aecorn is the brainchild of Ben Branson. It offers three very different non-alcoholic drinks. Made with Verjus (acidic juice





created by pressing unripe grapes) and thoughtfully chosen botanicals, the blends are defined by herbal remedies from the 17th century, one bitter, one dry and one smoky and cola flavoured. The perfect pairing for canapés is Aecorn Bitter which is reminiscent of Italian vermouth,

delivering a long finish with refreshing notes of grapefruit, bay leaf and orange with lingering notes of honeycomb and oak.

Another new arrival this year, Everleaf sits happily alongside Aecorn, being a bitter-sweet, smooth and exotic variation of a non-alcoholic apéritif. Made from 18 different plants, all of which are sustainably sourced, this exceptional drink is the creation of bartender and conservation biologist Paul Mathew, who spent a year researching plants, dehydrating samples, macerating and extracting to perfect Everleaf's recipe and flavours. Your conscience will be doubly clear, as the ingredients are sourced ethically and sustainably, including vanilla and saffron for richness, gentian and iris for bitterness and earthy warmth, plus vetiver and orange blossom for freshness and vibrancy.

For the traditionalist (which I am at heart),

few things surpass a beautifully crafted wine. Spanish winery Torres sell a lovely Natureo low alcohol rosé (0.5% abv). Made with a blend of Syrah and Cabernet Sauvignon grapes, a small amount of skin contact is allowed prior to fermentation, which creates the vibrant pink colour. The taste does not disappoint, being fresh and light with notes of cherry and boiled sweets.

As a final precaution, just in case a tricky guest prefers ale or cider over your no-low rosé, it is advisable to stash a couple of low-alcohol bottles. When it comes to ale, I highly recommend Harvey's Best low-alcohol Sussex Bitter (0.5% abv). With its impressive, smooth, hoppy finish it has been known to bamboozle the nerdiest of craft beer connoisseurs. As for cider, you will be hard pushed to find a better no-low option than Waitrose's own medium-dry and crisp low alcohol cider (1.0% abv). Finally, I am developing my own non-alcoholic bitter-sweet aperitif called Cordus which will launch soon. Exciting times.

www.instagram.com/cordusdrinks

www.instagram.com/sobersommelier



Tracy Claridge, Alfred Nicol and Peter Thomas at Benenden School Café

Friday 20 September
7 for 7.30pm
Weird and Wonderful Wines

40 Tickets Only - Available At The Shop

£15

To include nine wines
from unusual sources
and some excellent food

B's



Carex buehnerii



mixed border grasses

In Your Garden

Grasses

Although I garden with grasses all year round (more of that later), I find that September is the month when they really give the wow factor, either planted in blocks or within a mixed border.

I know some of us are inclined to yawn when grasses are mentioned. I think this is mainly because if they are used in the wrong situation any negative points they may have become glaringly obvious. The main bugbear is that grasses can look scruffy, and many a client has shaken their head at me about this. But if they are positioned in the middle or back of the border then nearby foliage will solve that problem.

Even gardeners like myself, however, with oodles of patience and tolerance, are scratching their heads in January at the sight of dead deciduous grasses flinging themselves around the garden, so I do see the point. Thankfully there is only a month of this to put up with [as all deciduous grasses should be cut back end of February or beginning of March. Calmness is once restored in the borders as they are hacked back to within a few inches of the ground (hedge-trimmers make light work of this if you have a lot to deal with) and it really isn't too long before a few inches of new growth appears.

I would encourage you to be generous when planting grasses as they look a bit lonely on their own. I sometimes attempt what I call

'the hedgerow effect' where I will combine grasses and mid to taller perennials dotted about in a random and seemingly natural look (but which in fact takes quite a bit of thought to create) and you can use just one here and there, thinking more of the overall picture.

Regarding the 'year-round' factor. For me, 'year-round' means a plant that gives something in the garden, whether it is dormant or in active growth. There are evergreen grasses, especially the Carex genus which I find particularly useful, and some which are labelled 'evergreen' but only because they keep putting on new growth. Unfortunately, this leaves dead sections in-between the new ones, which is definitely not a look I care for (anemanthele lessoniana springs to mind). These grasses tend readily to self-seed, so once I get fed up with the dead/alive leaf combination I chop the whole thing to the ground. If I am lucky it will regrow, if not then I can re-distribute from the mass of seedlings.

My favourites now are panicums and molinias, both incredibly easy to grow and divide and no sharp blades to catch me when I am in midsummer border-management mode. Smaller stipas and unusual bronze varieties are useful in containers although I often put a tall grass in a pot of its own, just because I can, and I like the height it gives to a late-season pot display.

Annabel Lear GARDENS

Planting . Design . Consultancy

07759 440922 annabellear@btinternet.com



Help is on hand
from your local Mind

www.westkentmind.org.uk
01732 744950

Information given,
volunteers welcome
and donations needed.

We're here to make sure
anyone with a mental health
problem has somewhere
to turn for advice and support.



Cake!
For any occasion.
Call or pop in
to enquire.



Our mission is to help all those affected by
dementia within our community of Tenterden and the
surrounding villages

Musical Memories ~ Every Tuesday

From 10.45am - 12 noon
Highbury Hall, Highbury Lane, Tenterden TN30 6LE
Come and Sing!

Not only is it good fun, but singing is
scientifically proven to promote good health
and a feel-good factor.

Music students from Homewood School 6th Form Centre
will be performing and singing along too and refreshments
will be served to keep the throats well lubricated.

Just The Ticket Memory Café ~ Every Friday

From 10.00am - 12 noon at The Refreshment Room,
Kent & East Sussex Railway ~ Tenterden Town Station
An opportunity to meet with others in our community
living with and caring for those with dementia.

Good company, new friendships,
with plenty of tea, coffee and cake!

www.dementiafriendlytenterden.co.uk

Please take a look at our website for further information



Annabel Lear GARDENS

Planting . Design . Consultancy

annabellelear@btinternet.com
featured on houzz.co.uk



Four fascinating courses
this autumn in Tenterden.

Garden History
Literature
History Day School
Poetry

Take a look at the brochure
and full details online:
www.wea.org.uk

Please contact: Sarah Cutts
01580 291406 pscutoff@btinternet.com

The WEA is a charity registered in England (no.1112775)

Outdoor workout classes in Benenden

Want to get fit, build strength,
burn fat and have fun?
Short of time and
want great results?
Then join my circuit-style class

When? Mondays and Fridays
8.45am

Where? The Glebe Field, next to
Benenden Village Hall

Who? Me? From beginner to
ultra-fit, my mixed-ability sessions
are designed so that everyone
gets a workout at their own level

1:1 personal training also available



For further details contact
Caroline Kennedy

☎ 07971 295442

✉ pt@carolinekennedy.co.uk

📘 Caroline Kennedy Personal Trainer

Free trial class!



Above: Benenden's Great Bake Off; a musical party to benefit the ABF The Soldiers' Charity Kent Branch; Benenden Pre-School open day and Pre-School father and child nursery rhyme models made from recycled material; our photographer on location

Front cover: Catching the elusive summer sunshine. Photograph: Amelia Thomas