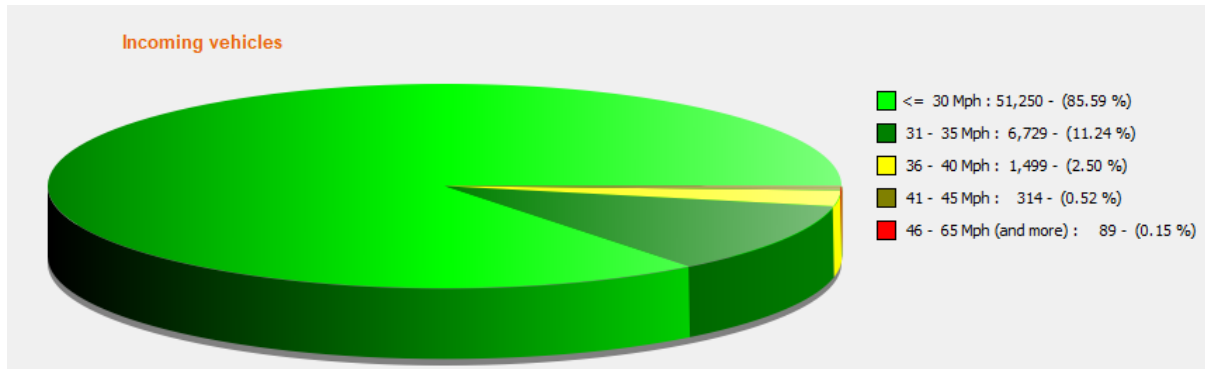


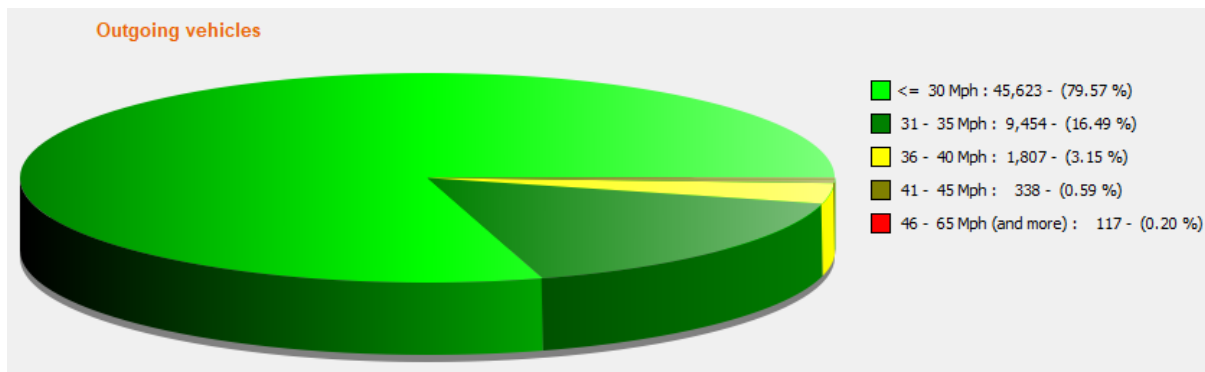
## December 2025

### Moorlands Drive

The fixed SID on Moorlands Drive recorded 59,881 vehicles heading into the village, 8,631 were travelling at above 30mph, which is 14.41% of values. The average speed was 27.04mph, with 85% of vehicles travelling at 30mph, the maximum speed recorded was 62mph.

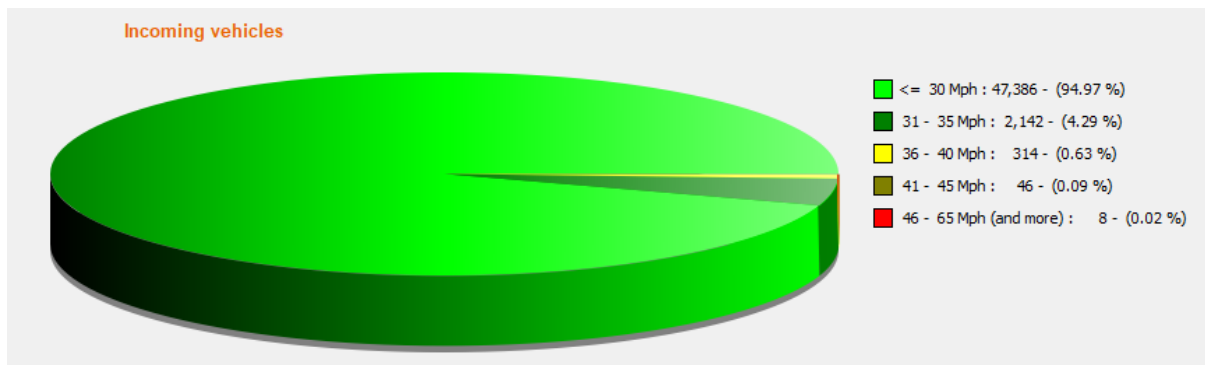


The fixed SID on Moorlands Drive recorded 57,339 vehicles heading towards Crewe, 11,716 were travelling at above 30mph, which is 20.43% of values. The average speed was 27.62mph, with 85% of vehicles travelling at 31mph, the maximum speed recorded was 69mph on the

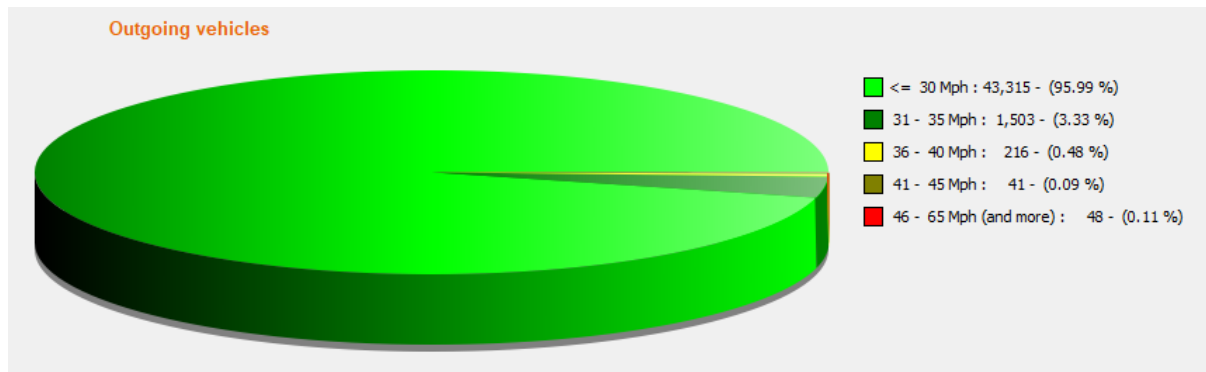


### Church Way

The fixed SID on Church Way recorded 49,896 vehicles heading to Crewe, 2,510 were travelling at above 30mph, which is 5.03% of values. The average speed was 25.02mph, with 85% of vehicles travelling at 28mph, the maximum speed recorded was 55mph.

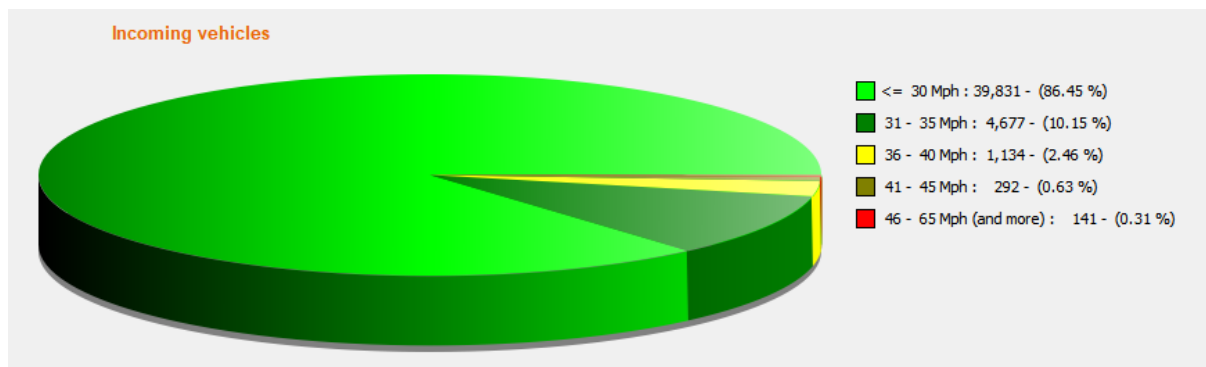


The fixed SID on Church Way recorded 45,123 vehicles heading into the village, 1,808 were travelling at above 30mph, which is 4.01% of values. The average speed was 25.01mph, with 85% of vehicles travelling at 27mph, the maximum speed recorded was 59mph.

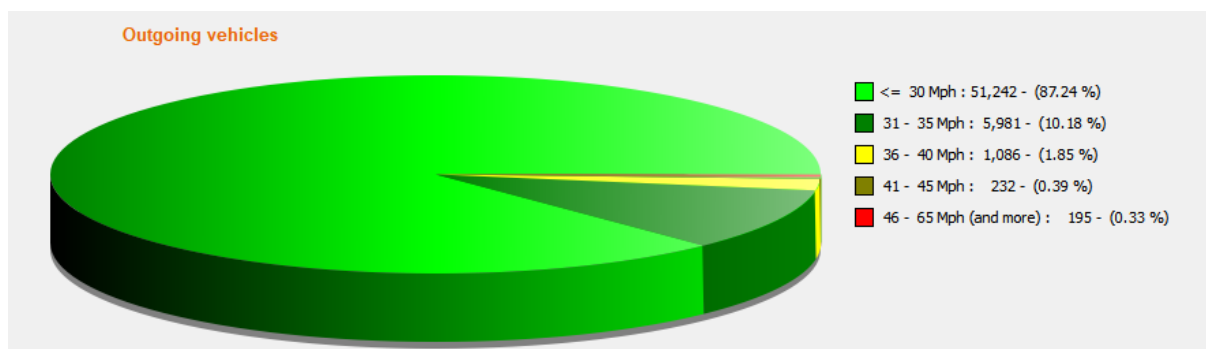


### Bridge Street Outward

The fixed SID on Bridge Street Outward recorded 46,075 vehicles heading towards the school, 6,244 were travelling at above 30mph, which is 13.55% of values. The average speed was 25.95mph, with 85% of vehicles travelling at 29mph, the maximum speed recorded was 70mph @ 00:15 16/11/25

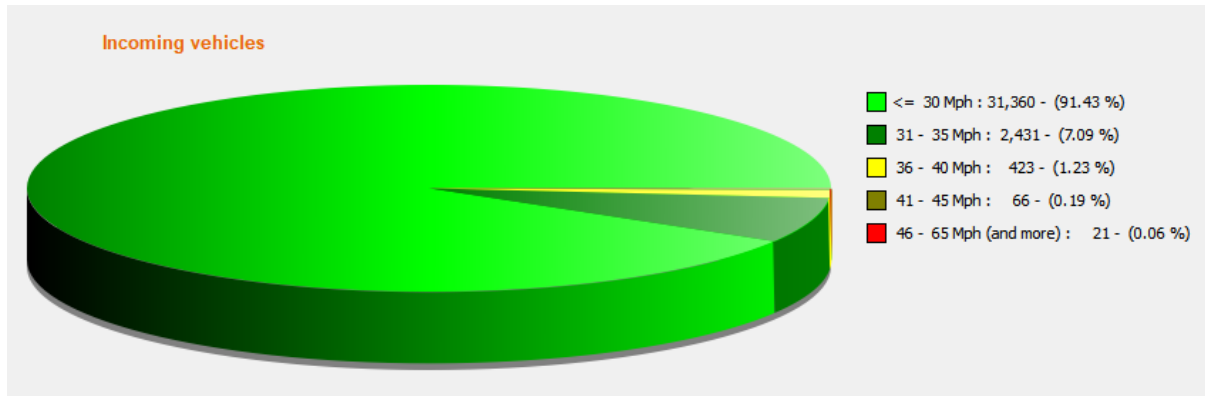


The fixed SID on Bridge Street Outward recorded 58,736 vehicles heading towards the tower, 7,494 were travelling at above 30mph, which is 12.76% of values. The average speed was 25.54mph, with 85% of vehicles travelling at 29mph, the maximum speed recorded was 84mph @ 01:48 13/11/25.

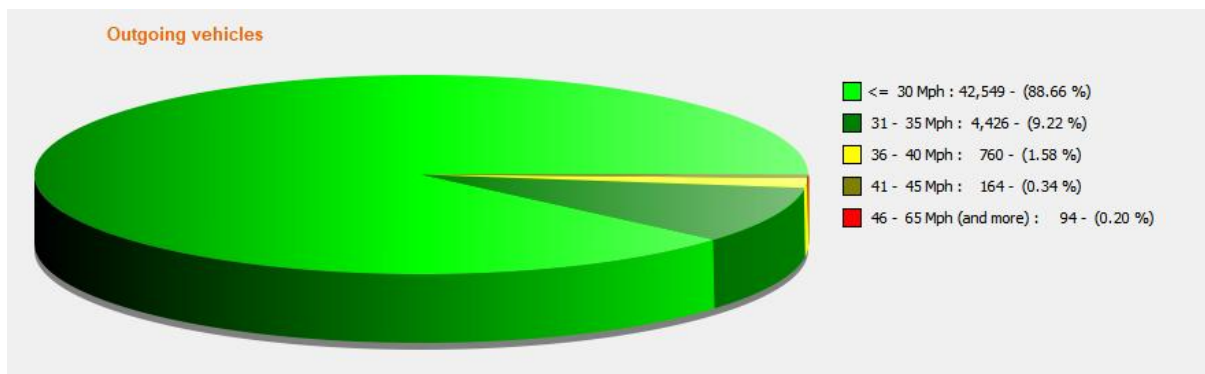


## Bridge Street Incoming

The fixed SID on Bridge Street Inward recorded 34,301 vehicles heading towards the tower, 2,941 were travelling at above 30mph, which is 8.57% of values. The average speed was 24.77mph, with 85% of vehicles travelling at 28mph, the maximum speed recorded was 56mph



The fixed SID on Bridge Street Outward recorded 47,993 vehicles heading towards the school, 5,444 were travelling at above 30mph, which is 11.34% of values. The average speed was 25.70mph, with 85% of vehicles travelling at 29mph, the maximum speed recorded was 66mph @ 01:05 16/11/25.



Regards

Richard