

JUNE 2026

BENTWORTH, LASHAM, AND SHALDEN PARISH MAGAZINE

**St. Mary's Bentworth; St. Mary's Lasham;
St. Peter and St. Paul Shalden**

Dear Friends

Most people today imagine that the point of Christianity is “to go to heaven when you die.” That’s what most believers believe. It’s what most unbelievers unbelieve. It’s certainly what journalists, broadcasters, and popular commentators think Christianity is supposed to be all about. They are all wrong.¹

Thus Bishop Tom Wright starts his newest book: *God’s Homecoming*. He is, as always, provocative in the best way possible. He encourages us to look at the scriptures and our own experience in God through the dual lens of what 1st century believers believed, and how we can best live that out today in our own world. He is also relatable and very funny.

The main point is that the death and resurrection of Jesus did not take place so that when we die or Jesus is revealed at the end of time, we could be rescued, taken out of this world and taken off to a remote blissful refuge (clouds, harps and cream cheese adverts come to mind). Rather, when Jesus is revealed at the end of the age, it will be to complete the work of uniting heaven and earth (we pray for this daily in the Lord’s Prayer). “The Word became flesh and dwelt among us”; this was hinted at in the Temple and Jerusalem, is carried on in our daily lives of devotion and witness as Christ’s body here on earth, and will be brought to fruition at the end of time.

What does this mean for each of us? I have been challenged to reexamine what I believe about what happens after I die, and more importantly how I am to live now.

If God is not going to cast this world away but instead will gloriously renew it, then I must reaffirm my commitment to care for all of God’s Creation. This is to fulfil the charge given to Adam to tend the garden. I am also to recognize that I am my brother’s keeper. God has made every human in his image, so all must be cherished and treated with fairness and dignity.

There is much that is wrong in this world. Paul writes to the Romans: “For the creation waits with eager longing for the revealing of the children of God; for the creation was subjected to futility, not of its own will but by the will of the one who subjected it, in hope that the creation itself will be set free from its bondage to decay and will obtain the freedom of the glory of the children of God.”² We are driven to our knees in prayer for God’s kingdom to come on earth as it is in heaven, and to action to work for the kingdom.

Each of us must work out the path that God wants to lead us on. Some of the things that have taken on an enhanced significance for me: litter picking, bird feeding (following RSPB advice about minimizing contamination), Eco Church, driving electric, living simply.

Some of us will be led to join a political party, others to work for a charity or to volunteer for a cause. It may be necessary to examine the ethical practices of our bank or pensions provider. Many of us will do more than one of these.

A cause that grips me is to work to improve our relationship with the other nations of Europe. I would love to hear from anyone who would like to join me in taking part in the National Rejoin March in London on Saturday 20 June. Oh, and Bishop Tom points out that many of our familiar hymns and prayers refer to the world view that we will “go to heaven when we die”, and they need to be rethought.

I will struggle from now on to sing:
 Changed from glory into glory,
 till in heaven we take our place,
 till we cast our crowns before thee,
 lost in wonder, love and praise.

But I am still thrilled to sing:
 Joy to the world, the Lord has come!
 Let earth receive her King;
 let every heart prepare Him room
 and heaven, and heaven and nature sing.

Are you excited by the thought that we are taking part today in God's great renewal project in Alton, the surrounding villages and throughout the world? As one wag put it, the Christian faith is not pie in the sky when you die, it's steak on the plate while you wait (apologies to all vegans).

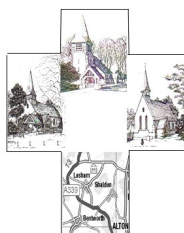
With every blessing Revd Bruce Nicole

¹Wright, Tom. God's Homecoming: The Forgotten Promise of Future Renewal (p. 14). SPCK. Kindle Edition. ² Romans 8:19-21 ³ <https://marchforrejoin.co.uk/>



THE VILLAGER

the editor



Please send copy for the **July Magazine** to the Editor or your Village Correspondent **by noon on Tuesday 9th June** .

This month I have had to turn down two entries which were sent after the deadline, when the copy was complete, and the pages full – 48 is our maximum. I hate to do this, but.... Please make sure you let me know if you are not able to send copy by the deadline – we can usually work something out, if I am forewarned.

CONTENTS

	<u>page</u>
Charity	14
Church	47 & 48
Clubs Alton	20
Medstead	22
Community Information	16
Events	18 – 20 & 32 - 47
Event Report	17
Regular Features:	
Bee News	25
Bus Timetable	30
Farmers Markets	30
Country Matters	28
Library	30, 36, 38 & 45
VILLAGES:	
Bentworth	4
Lasham	8
Shalden	12

DATES FOR YOUR DIARY

MAY

- 24 Shalden Park House Open Garden for NGS 2 - 5pm GU34 4DS
25 Curtis Museum: Make & Take clay session 11 – 12noon
28 Talk: *Hormones, Health & Weight, for Over 40s* Medstead Village Hall 7pm
30 Beech: National Theatre Live: *Playboy of the Western World* 7pm

JUNE

- 2 Medstead Gardeners' Club: Beverley Exall *Sustainable and Wildlife Gardening*
2 Bentworth Parish Council meeting
3 Roedowns WI: Self guided walk around Winchester
5 King's Arms Quiz Assembly Rooms 6.30 – 10pm Page 32
6 St Lawrence Monthly Market the Parish Centre 9 - 12noon
6 Upton Grey Fete at The Old Vicarage 2pm Page 34

9 Villager deadline for the July magazine by noon please

- 9 ASA: Talk by Julian Halsby: *What really happened at the Yellow House in Arles in 1888?*
12 Broadlands: Tea at Three 3 – 5pm Page 33
12 Beech - Screen by the Green: *Hamnet* 7:30pm Page 20
13 Library: start of Expressive Watercolours course 10am – 12.30pm Page 36
13 Library: start of Art for Wellbeing course 2 – 4.30pm Page 36
19 ACAN: Peoples Emergency Briefing Film Alton College 7.30 – 9.30pm Page 37
19 – 28 Jane Austen Regency Week, in Alton
20 Library: Emergency First Aid Course 9.45am – 4.45pm Page 38
20 Alton Repair Cafe Assembly Rooms 10.30 – 12.30pm
20 Beech Gigs by the Green: Laura Jurd with guests 7:30pm Pages 20 & 39
25 St Lawrence recital- short Summer series by Will Nisbet, & Tony Willman on trumpet
25 Beech - Screen by the Green: NT Live brings *Les Liaisons Dangereuses* Page 20
26 Broadlands: Summer Wine Tasting Wivelrod Barns 6.15pm Page 33
26 Benefice "Curry, Comedy & Christianity" The Spice Bank 6.30pm Page 47
27 Dolls House Day at the Assembly Rooms 10.00am – 4pm
27 Alton Choral Society Summer Concert Methodist Church 7pm Page 42
27 Waverley Singers: Crowning Glory St Lawrence Church 7pm Page 41

JULY

- 1 Roedowns WI: Dogs for Autism Medstead Village Hall 7.30pm
4 St Lawrence Monthly Market the Parish Centre 9 - 12noon
4 Bentworth Fete St Mary's School field & Jubilee Hall 2 - 5pm Page 43
5 Shalden Fete Shalden Park Farm 2pm Page 44
11 Medstead Fete Village Green 12 - 4pm

BENTWORTH

BENTWORTH CARE GROUP

Jackie Crawford

The members on duty for medical appointments in June are:

Judy Fellingham 07900 168 446; Melanie Day 07412 938 583;
Poo Madge 01420 617003

We are also happy to do shopping or pick up prescriptions for those unable to do so themselves.

THE MUCK IN COFFEE MORNING

At last a month when we can meet every Monday, and there are five!! So do come to Parsonage Farm Barn on June 1st, 8th, 15th, 22nd and 29th. We meet at 10.30am for an hour, for lots of chatter, over coffee and biscuits for just £1 (most of which goes to charity!), thanks to Emma and David Wiggin who kindly let us use their lovely barn. We look forward to seeing everyone.



**Bentworth
Cricket Club**

Bentworth Cricket Club welcomes new playing members to join the team for 2026 season. The club plays in Hampshire Cricket League at a competitive but friendly level. Matches are played every Saturday afternoon from the first weekend in May through to end of August. Indoor nets are held at Alton College on Tuesday evenings in the winter and spring months and outdoor nets at our beautiful ground during the summer.

The club also runs a number of fun and fund raising events to ensure we are a full part of village life.

If you are interested please contact Richard Hill (07887821326) or Ken Thomas (07769 947033) in the first instance.

We look forward to meeting you.

Richard Hill

Bentworth Cricket Club hosted its annual fund raising quiz night at Jubilee Hall on Saturday 25th April. It was strongly supported by 90 attendees divided across 11 tables. A



great combination of new and older teams from the village joined the cricketers' sides. There was a wide range of devilish questions posed by various members of the team and, after fierce competition, former club captain Nick Gay's team 'W-innings' prevailed, edging

out previous winners 'The Ashes' led by Poo Madge. The winners went home with the prestigious Brick of Knowledge and a bottle of wine each, and the infamous 'Two Short Planks' award for the last placed team was awarded to a team of Bentworth villagers who shall remain anonymous to save their blushes'.

Captain of the winning team presented with Sigi's Brick of Knowledge by Richard and James

Many thanks to all attendees, the chefs who ensured the quizzers were well catered for, and especially John Stockdale for helping out on the sound system and Jane Philips for coordinating Hall hire (Jane also won a fine bottle of Hattingley Valley bubbly in the "Heads and Tails" competition).



JP Dunnett expertly ran the pudding auction with a range of fine cakes and desserts generously provided by club supporters and raising an impressive amount for club funds.

A fun evening all round and huge thanks to all who so generously supported the event.





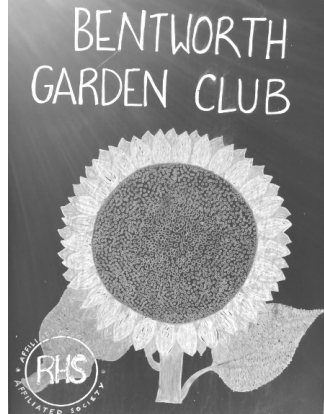
On Saturday 9th May we held our annual garden club plant sale on Bentworth village green. We were truly blessed with perfect weather, neither wet or too hot!

All the committee had worked tirelessly, in this very tricky spring, raising seeds and dividing perennials to sell. The results paid off and we had a lot of plants to offer.



Thanks go to so many members of the club who delivered plants to us, we couldn't put on the sale without everyone's help. We had a great influx of buyers from 10am onwards, all eager to bag a bargain!

Those of us on the committee were there to offer help if needed. George as ever ran a very successful raffle and Maxine our Treasurer kept the coffers filling.



The money raised goes to maintain the running of the club, refreshments, hall hire and towards the cost of the annual outing.

Thank you to everyone who came, or spread the word. Our next club plant sale will be a small stall at the Bentworth Fete on Saturday 4th July on the school field.

We look forward to seeing you then, and if anyone would like to join the club for this season it's not too late. There are garden visits, an outing and a social through until October.

Happy gardening everyone, enjoy the flowers this month.





The Bentworth Fête returns on **Saturday 4th July**,
2–5pm at St Mary's School Field and Jubilee Hall.

Opening at 2pm with performances from St Mary's pupils, the afternoon promises everything you could wish for from a traditional village fete: a grand raffle, coconut shy, tombola, children's games, local crafts and stalls, and a thoroughly enthusiastic fun dog show.

There will be no danger of going hungry or thirsty, with a BBQ, beer tent, Pimm's bar, teas, homemade cakes and ice creams.

A wonderful opportunity to come together, catch up with familiar faces, meet a few new ones, and support the local groups and charities central to our village.

Bring friends, family, and join us for a very happy afternoon.

BENTWORTH PARISH COUNCIL

Scott Neville

THE NEED FOR LESS SPEED

The little cameras you see on Station Road, by the cricket pitch and on Holt End Lane make up our AutoSpeedWatch system. These cameras detect and photograph vehicles which are driving significantly above the speed limit. A small group of volunteers manually verify the registration mark of every image captured. We have been in contact with the DVLA and they have provided the registered keepers address for the most prolific speeders.

The council already writes to the owners of commercial vehicles to inform them that we have identified their vehicle as a persistent speeder, and that this information is available to the police. We now intend to do the same for private vehicles.

To be clear, we are only targeting the most prolific speeders, typically, these are drivers identified as doing more than **30%** over the speed limit **hundreds of times**. Drivers accidentally going a little over the speed limit once or twice are not the focus. The vast majority of this is through traffic – vehicles from other parishes.

In the last 12 months there have been a few crashes on Station Road, so please don't take risks & keep to the speed limits!

* * *

LASHAM

ST MARY'S RE-ORDERING

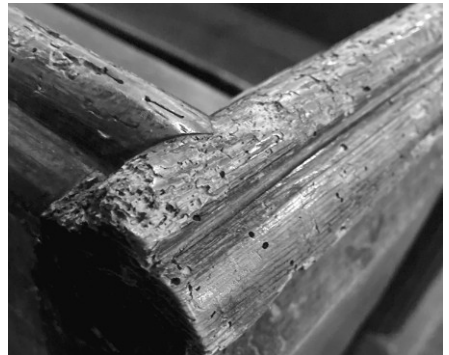
Sarah Miskella

What have we done?

It is with great excitement that after over two years of planning, lots of hard work and the generosity of those who helped fund the project, St Mary's re-ordering finally commenced on 16th February. The project has been to install a standalone oak clad pod containing an accessible toilet and separate kitchenette in the west end of the building, on the north side of the nave.



The damaged flooring where the pod is now situated has been replaced, a damp-proof course installed throughout, and the remaining wooden flooring of the church nave replaced with a beautiful oak floor. In addition, the supporting wooden substructure throughout was replaced. The pews were infested with woodworm,



which had weakened their structure and the affected wood was showing signs of splintering and was clearly damaged. Their removal and the introduction of supportive repurposed Alton Abbey chairs has improved



safety, allows more flexibility for different service and event layouts, has improved comfort and enhanced inclusivity for wheelchair users, those with mobility challenges and families with young children. *The Pod* *The new layout*



Why have we done it

The key driver for undertaking this project is to build on the wonderful and beautiful asset St Mary's is, being at the heart of our community, hosting worship, celebrations and gatherings that bring people of all ages together and is the only community building in the village.



Yet, the building presented barriers to comfort, accessibility and limited the potential for increasing both our faith and non-faith attendance.



Visiting clergy, choirs and wedding guests for example, who travelled a distance to attend the church, were negatively impacted by the lack of toilet facilities, as well as those who need comfort facilities on a more regular basis. The increase in flexibility for potential use (through the introduction of the more easily managed chairs) of the building has been improved and we aim to hold all sorts of events going forward such as Harvest Suppers, Messy Church, Village Coffee Mornings and Talks etc.

Thank you again to all those who helped to make this transformation possible.

LASHAM COFFEE MORNING

Anthea Del Mar

Pink balloons on the church gate welcomed everyone to the opening of St Mary's, Lasham as a party venue.

The monthly coffee morning in the church was declared a great success. The flexibility of the space available made it very easy to arrange tables and chairs so that everyone could sit or wander around as they wished. The new servery made it simple to boil kettles and provide quantities of tea and coffee.





Thanks to the generosity of several people there was a good selection of cake - thanks particularly to the Queen of the Coffee Cake, Sandra - and biscuits.



Conversation, as usual, ranged over a series of topics, including the joys of having our Christmas Fair in the church.



The next date is **Monday 1st June** in the church.

We are looking for volunteers to host.

SHALDEN



Sunday 5th July

A Call to Arms!

Thanks to your support last year, Shalden was able to donate £4000 to local worthy causes.

To help our volunteer stallholders run another successful fete, please:

- **Deliver your donations** to the relevant stallholder (details below), ideally by **Saturday 4th July**.
- **Contact the stallholder** in advance if you need to arrange collection or confirm drop-off details.

Books: 'Good as New' books for all ages. Please deliver to Tim Gordon-Jones at Horsley, Southwood Road. Contact: Tim on **07771 862890** or timgj@hotmail.com

Bottle stall: Bottles (full!) for the bottle tombola are always gratefully received. Please drop them off with Loraine Champness at The Old Cottage (next to the church), or with Bernard Dunk at Springfield, Southwood Road. If you need items collected, please call Loraine on **01420 541414** or Bernard on **01420 88049**.

Cakes & Preserves: Shalden Fete is renowned for the delicious home-made cakes and preserves donated by villagers. To help us plan, please let Wei-Man O'Connell know what you can provide, and arrange delivery via WhatsApp on **07990 971515**.

Dog Show: Keri, our postie, has kindly offered to run this year's Dog Show and is looking forward to a great turn-out from our four-legged friends and their handlers. There will be prizes, and a chance to win the **Dawkins Cup**. To help us run the event smoothly, entries will be limited to a total of 25 dogs (with handlers). To confirm your interest WhatsApp Keri on **07578 796549**.

Categories: Handsome Hound; Loveliest Lady; Golden Oldie (7+ yrs); Cutest Puppy (up to 18 mths); Best Junior Handler (12 yrs & under); Best in Show

Plants: Potted up and labelled plants and shrubs are needed – even just one plant would be warmly welcomed! Please deliver your plants before Saturday 4th July to Frances Anderson at Stonewall, Old Odiham Road or to James and Katie on the lawn outside 2, Shalden Park Steading (offices entrance). For any further information please contact Frances on **07720 412101** or fhanderson@gmail.com

Toys: Donations of children's toys, board games and maybe DVDs can be delivered to Aylesfield Farm House (across the Golden Pot crossroads, a short way up Froyle Road on the left). To arrange collection please contact: Cressida Mizen on **07939 505727** or cressmizen@gmail.com

Unwanted Gifts: Unwanted gifts (new/unused, and in original packaging where relevant) can be delivered to Waverley Cottage, Southwood Road. If you need items collected, please contact Michelle Jones on **07876 660367**.

For further information about this year's fete or ideas for donation to local worthy causes please contact any of the committee members:

- **Secretary:** Alex Gordon Jones. **Treasurer:** Nathalie Fordham.
- **Committee Members:** Peter Rankin, Ian Champness, Sue Cripps, Ian Todd.

St PETER & St PAUL GUILD OF MARTHA

Kirsty Ennever

June

6 Jane Shirvell / Lin Baxter
13 Karen Saponaro / Lynne Hignett
20 Michele Rankin / Kirsty Ennever
27 Rozanne Wilson / Rosalind Ommanney

July

4 Jane Shirvell / Lin Baxter
11 Karen Saponaro / Lynne Hignett
18 Michele Rankin / Kirsty Ennever
25 Rozanne Wilson / Rosalind Ommanney

SHALDEN PARISH COUNCIL

Katherine Horton
Clerk to Council

Annual Parish Meeting. The meeting took place on Monday 12th May and was attended by residents from across the parish. PCSO Hornsby (Alton Rural) joined the meeting and provided a lively update on local policing as well as answering questions from the audience. Cllr Orme (Chair of Shalden PC) provided a summary of the Parish Council's work over the past 12 months including the installation of a speed warning sign on Old Odiham Road and changes that are planned for improving the facilities at the Recreation Ground. Information on local Government reorganisation was also shared with attendees as the impact of the changes are likely to be felt at the parish level. Following updates from the Village Hall CIO, Church Warden and Fete Committee, the evening closed with drinks and nibbles.

Community information

The Parish Council have been engaged with local agencies (including Hampshire IOW Constabulary and Hampshire CC Highways department) to identify how to address issues of speeding and RTAs in the parish. It has been highlighted that decisions, on where to place resources or spend budget, take into account the statistics held by the police on such incidents. If you are involved in or witness a traffic incident, please report it through Hampshire Constabulary website: doing so will help ensure a true picture of the issues faced in the parish are captured and help strengthen the case for improvements to be made.



Parish Council meetings: 7:30pm in Shalden Village Hall. Residents are warmly invited to attend these meetings which provide opportunities through the year to raise questions or share concerns to the Councillors.

- Wednesday 27th May - Annual Meeting of the Parish Council
- Wednesday 15th July
- Wednesday 23rd September
- Wednesday 18th November

Have you signed up for updates from the Parish Council via the link on the website?
<https://www.shalden-pc.gov.uk>

* * *

CHARITY

AN AWFULLY BIG ADVENTURE Part 1

Jacqui Austin

Do you have a Toyota Hilux, Mitsubishi L200 or a Nissan Navara just lying around, doing nothing? If it's got enough pep in it to travel across the whole of Europe and enter a second life as a rapid response vehicle, taking wounded combatants from the Ukraine front line to field hospitals, then I, Jacqueline Austin, retired primary teacher, enthusiastic camera clicker and a Shalden resident of 34 years, would like to hear from you.

Jacqui on the back of the Navara

On March 22nd, I joined my former colleague Helen, driving a locally funded pickup for four days, into East Ukraine. It was packed to the gills with humanitarian aid, and supplies for an orphanage local to Lviv.

For the previous year, young British and Ukrainian people from Odiham and local villages had been fundraising in order to purchase their third 4WD, a (very) second-hand Nissan Navara which they named Lyubov. (Faith and Hope had already been sent over to Ukraine.)

Their efforts culminated in a concert at Odiham Church, in February this year - which marked the fourth anniversary of the Russian invasion - and brought the fundraising total to a point where the next 4x4 could be bought.

The young people – all of them still at school – then looked at their remaining funds and had a



discussion about what they would like to see bought and taken over to Ukraine, based on a list of needs provided by the Scottish charity, Pickups for Peace. Meanwhile, requests were being sent out for donations towards the requirements of the Sacred Heart Orphanage, which included construction toys and clothing.

Lyubov painted on the passenger side of the car

Residents from the village of Shalden, along with some Alton groups of which I am a member, plus family, former colleagues and friends, then dug deep and raised a staggering £600+ towards the needs of the children aged 4 to 16, as well as donating clothes and toys.



Determined to be as much a part of *Lyubov's* journey as possible, children from schools in and around Odiham set to, sorting, boxing and labelling the various items for the orphanage, cleaning and washing the vehicle, and finally packing it with everything, including medical supplies, trauma packs, generators, crutches, spades, netting, two field stretchers and four spare tyres. They did need some help from a couple of local farmers, though, getting those tyres well and truly tied onto the roof!

Finally, at 6am on a very cold Wednesday morning towards the end of April, we set off for Folkestone, the Channel Tunnel and our place on Le 09:16 Shuttle. The sunrise indicated a glorious day, but taking my precious camera from its bag to document the journey, I was reminded that fly-spattered, dirty windows do not make for clear photos, and mile upon mile of British and European motorways are not hugely photogenic.

We had a quick trip on the Le Shuttle – a first for me – followed by the first mutually agreed driver swap, and we drove the vehicle through France, Belgium, The Netherlands, and into Germany, where we stopped overnight, ready for the next day's haul into Poland. Although we had been in contact with the convoy group Pickups for Peace (P4P) on Whatsapp, already, we began to see the members of convoy #27 forming a chain of 4WDs across Germany heading towards the route that would lead us all into Poland.

For us, the next day's travel was as unadventurous as the Wednesday's had been,

however, some members of the convoy were not so lucky. Four of the approx. 40 vehicles had had technical or mechanical issues en route. One gentleman wondered if he had set a record, with his vehicle breaking down a mere 7 miles from home. Two young ladies got into their vehicle in the North of England, only to find it wouldn't start. Another pair of vehicles (including a former ambulance) had to wait in a motorway service station while the local fire department dealt with a lorry fire on the exit slip road, only for the drivers to find the pickup developed a mechanical issue which meant they were 7 minutes late for their designated ferry, and finally, the passenger in the back pickup of another mini-convoy watched in horror as the wheel nuts from the rear passenger side



Into the emergency lane, just in time

flew off the one in front. Fortunately, the driver pulled over into the emergency lane with millimetres of tyre sitting on the wheel shaft, but 3 hours later, thanks to the kindness of a local Polish mechanic, the little convoy of two headed for the Polish-Ukrainian border, catching up with the rest of the us just in time to insert themselves in line before the final convoy vehicle – us, *Lyubov*.

Finally, after a more than 3 hour wait at the border, we were beckoned into the Polish customs area. And of course, at that point, having travelled the breadth of Europe with absolutely no problems whatsoever, our Navara refused to start! *(To be continued)*

COMMUNITY INFORMATION

UNDERSTANDING RURAL AFFORDABLE HOUSING

Luke Buckland

and Its Potential Role Locally

Community Projects Assistant

Do you know a young person who has had to move away because they couldn't afford to live locally?

In many rural parts of Hampshire, housing is expensive. Younger adults aged 35 and under are often forced to move away, families can struggle to find suitable homes, and key workers may be unable to live in the communities they serve.

Rural affordable housing helps address this challenge. These are homes offered at costs local people can afford, including affordable rent and shared ownership options. Applicants must have a connection to the local area, ensuring homes go to those who already live, work, or have family there.

Even a small number of affordable homes (5 to 10 properties) can make a real difference. They help younger residents stay close to family and friends, support those living in overcrowded housing or looking to downsize, and enable key workers such as teachers, carers and tradespeople to live locally.



New rural exception site in Longstock, delivering five affordable homes for local people.

Affordable housing also benefits the wider community. For example, research by the Rural Services Network shows that just 10 new homes can generate £1.4 million in economic activity and support 26 jobs, helping sustain schools, shops, pubs, and other essential services.

Action Hampshire works with local communities and parish councils to explore opportunities for affordable housing. You can help by contacting your parish council to highlight the need in your area, and by encouraging them to get in touch with us to discuss how new affordable homes could benefit your community.

* * *

EVENT REPORT

ALTON CHORAL SOCIETY GOOD FRIDAY CONCERT raises over £850 for Naomi House & Jacksplace, Hospices for children & young adults

Patrick Busby



Alton Choral society gave it's annual '*Reflective Music for Good Friday*' concert to a full house at Alton Methodist Church on 3rd April. The concert raised over £850 for **Naomi House & Jacksplace**, the hospices for Children and young adults.

Directed by Wendy Busby and accompanied by Jane Palmer, the choir gave moving performances of Fauré's "*Requiem*" and his early work "*Cantique de Jean Racine*". The solos in the requiem were performed with great skill and sensitivity by Andrew Berkley and Wendy.

Alison Crow joined Wendy for a beautiful performance of Mendelssohn's "*I waited For The Lord*" accompanied with great delicacy by Patrick Busby on piano.

Kathy Starkey offered a compelling performance of John Rutter's "*Lament For The Holy City*" on flute also accompanied by Patrick. A particularly fitting instrumental piece for Good Friday.

Alton Choral Society's next concert will be on **Saturday 27th June** in Alton Methodist Church when we will be supporting **Alton Foodbank**: Alton Foodbank | Helping Local People in Crisis in it's 15th anniversary year with a programme of famous opera choruses and arias.

We are always looking for new members to join our friendly choir. A basic knowledge of reading music is recommended and a love of making music absolutely essential!

We rehearse at the Salvation Army Hall on Wednesday evenings from 7.45pm.

For more details, please check out our website: <https://www.altonchoral.org.uk/>

If you are interested in joining us, please come along to one of our rehearsals and contact our secretary at welcome@altonchoral.org.uk, or call Wendy Busby: 07715 771 489.

* * *

EVENTS



ALTON ORGAN SOCIETY

Elspeth Mackeggie Gurney

The final recital in the 59th season was given by Ourania Gassiou on May 5th. Ourania's programme started with two well-known pieces – Mendelssohn's Organ Sonata No 5 and JS Bach's chorale prelude "Schmucke dich, O liebe Seele" BWV 654. These pieces are connected in that Mendelssohn was responsible for reviving interest in Bach's music in the mid-19th century. The organ sonata has a stately Germanic opening then becomes more lyrical and uses all three manuals and pedals. Bach's chorale prelude was beautifully played, starting on the swell manual with the theme being picked out on the Great. Very much a contemplative piece, living up to the Lutheran hymn from which it takes its title – Deck thyself, my soul with gladness.



"Mozart Changes" by Zsolt Gardonyi, a Hungarian composer, was a real change of mood and style. It is a gloriously jazzy piece using two themes of Mozart's Piano Sonata No 18. It was played with real zest & feel for jazz rhythms & the audience loved it.

Another change of mood came with Vierne's "Stele pour un enfant defunt" from his Triptyque opus 58. Vierne was organist at Notre Dame, was almost blind from birth & suffered severe mobility problems; tragically Vierne died at the organ during a service. This piece, the title of which translates to "Headstone for a dead child" was dedicated to the memory of Jean de Brancion. As expected, this was a slow piece, much of it in a minor key, again played with great care.

Italian composer Enrico Bossi's "Scherzo in G minor" was fast & playful, played across all three manuals and pedals – it was delightful and ended with a fabulous flourish on the Great.

Ouriana's final piece was "Salve Regina" written by Olivier Latry. Originally an improvisation, Latry then wrote down the 7 movements, each based on a line of the Gregorian chant to the hymn Salve Regina. This was truly a virtuosic piece, moving from slow & dark to fiery and fast using all the sounds and colours the organ at St Lawrence is capable of. The last movement ended with the music slowing and becoming simpler, down to a single note before a final flourish in traditional organ style. Ouriana's playing was superlative & the audience showed their appreciation for this wonderful, stunning piece.

Date for your diaries:

June 25th – the first recital of the short Summer series is to be given by Will Nisbet, the organist at St Lawrence together with Tony Willman on trumpet.

The recital is at **1pm** on **June 25th**. Refreshments are available from 12.30pm & entrance is free with a retiring collection to cover expenses and to contribute to the organ restoration fund.

THE CURTIS MUSEUM

Jill Line

OPENING TIMES: Tuesday to Saturday 10am – 4.30pm 01420 82802
www.hampshireculture.org.uk/curtis-museum

Forthcoming events at The Curtis Museum

The Curtis Museum is holding two themed trails in June -

For Alton's Regency Week - Jane Austen's High Street Trail

Join a FREE themed trail around the Curtis Museum and find out more about the writer's walks from nearby Chawton to Alton, what she might have seen on her route, as well as her connections with the Curtis family.

Friday 19th June to Friday 17th July, 10am - 4.30pm.

Drop in from 19th June and throughout Alton's Jane Austen Regency Week to pick up your FREE trail sheet, the trail will continue until Saturday 17th July.

In honour of Dolls House Day, (which will be held in the Alton Assembly Rooms on the 27th June) a **Miniature Items Spotter Trail** This trail runs from Tuesday 2nd June - Saturday 27th June, 10am - 4.30pm. FREE ENTRY.

Can you spot the miniature items we have hidden around the museum? If you're up to the task they will reveal a secret word!



UPDATE on the Allen Gallery from Hampshire Cultural Trust

Allen Gallery Redevelopment

We're delighted to share that construction has officially begun on site. This is a major milestone for the project and an exciting step towards the venue's transformation. The venue closed at Christmas as planned, and all activity has now successfully transferred to the Curtis Museum while works take place.

Alongside this, the wider project continues to make strong progress. Our community engagement programme remains active, with family activities running during school holidays, artist residencies underway with local creatives, and a range of opportunities helping our volunteers stay closely connected and involved throughout the redevelopment.

To stay up to date with project-related activities and events, keep an eye on the Curtis Museum website.

THE SCREEN BY THE GREEN, BEECH

Joanna Curtis

Two affairs of the heart at the Screen by the Green

Love, loss and some very dangerous liaisons are coming to Beech Village Hall.

Friday 12 June: Hamnet: Chloé Zhao's adaptation of Maggie O'Farrell's bestselling novel about the son who inspired the greatest play ever written. Jessie Buckley's Oscar, BAFTA and Golden Globe-winning performance. Paul Mescal co-stars. £7 advance.

Thursday 25 June: NT Live brings Les Liaisons Dangereuses filmed live, at the National Theatre. Marianne Elliott directs Lesley Manville and Aidan Turner in Christopher Hampton's celebrated adaptation. Seduction, revenge and ruin. £14 advance.

Small venue. Big screen. Special atmosphere. Just 50 seats - book early.

beechvillage.org.uk/events

Community cinema with heart and soul

Saturday 20th June

GIGS BY THE GREEN at Beech Village Hall :

Laura Jurd with guests

7:30pm (Doors 7pm)

Bookings: beechvillage.org.uk/events

Gigs by the Green: Folk-Inspired Chamber Jazz Comes to Beech

She grew up just up the road in Medstead. Now she's coming to Beech.

On Saturday 20 June, **Laura Jurd** brings her trumpet to Gigs by the Green for one night only. Mercury-nominated, Ivor Award-winning and hailed by BBC Radio 2's Jamie Cullum as "*the kind of musician I want to be in my next life.*" Joined by guitarist Rob Luft and violinist Owen Spafford, expect folk-inspired chamber jazz drawn from musical traditions across Europe.

One special evening. Just sixty-five seats.

Tickets £16.50. Doors 7pm. Starts 7:30pm. Book now at beechvillage.org.uk/events

Live music in the heart of Beech

Beech Village Hall, 1 Wellhouse Road, Beech, Alton, GU34 4AQ

* * *

CLUBS

ALTON



ALTON CAMERA CLUB
April 2026 round up

Renee Smith

Our 2025-26 season has now drawn to a close. It seems like no length of time ago that we welcomed ten brand-new, and over thirty returning, members through our doors at Holybourne Village Hall last September.

It's been a busy year of field trips, competitions, talks and practical evenings and our members achievements were celebrated at our annual Presentation Evening held recently at Alton Rugby Club.

Award winners were as follows: -

Photographer of the Year -

Steve Smith QGP

Member of the Year - Sue Dewey

Progress Trophy - Chris Osborn

Newcomers Trophy - Mike Cooper

Print League (overall) - Steve Smith QGP

Print League (colour) - Steve Smith QGP

Print League (B&W) - Nick Brock

PDI League (overall) - Steve Smith QGP

PDI League (colour) - Steve Smith QGP

PDI League (B&W) - Lynne Harles LRPS

Print Challenges

'Within 10 miles of Alton' - Barry Clark

'Autumn' - Steve Smith QGP

'Minimalism' - Jason Bunce LRPS

Portrait Print - Nick Brock

PDI Challenges

'Two of a Kind' - Nick Brock

'Weather' - Steve Smith QGP

'Water' - Wendy Davies LRPS

Song Titles - Andrew Sorrell

Mobile Phone - Renee Smith

His n'Hers - Team 'Her'

Safari Shield - Kelvin Perry

Safari Best Image - Kelvin Perry

Safari Quiz - Chris Osborn & tea



Winged Dispute Steve Smith
(Photographer of the Year)



Last of the Summer Nectar
Chris Osborn (Progress Trophy)



Wish I Was There Mike Cooper
(Newcomer Award)

Award Winners Line Up at Presentation Evening



Despite the absence of weekly meetings during the summer, we still meet up for field trips twice a month. Our challenge themes for next season have been announced, and we will be busy gathering images for our competitions as well as enjoying our photography and being out and about.

Our new season starts on Wednesday 2nd September.

We meet in Holybourne Village Hall at 7.30pm. New members are welcome.

More details can be found on our website www.altoncameraclub.org.uk



ASA

Vanessa MacMahon

Forthcoming Lectures:

Tuesday 9th June 2026: Julian Halsby *What really happened at the Yellow House in Arles in 1888?*

In October 1888 Paul Gauguin arrived in Arles to stay at the Yellow House with Vincent van Gogh. At first the friendship worked well...

This lecture will be held at Martin Read Hall at Alton College commencing at 7:30pm (doors open 6:45pm)

The next meeting will be on Tuesday 8th September 2026 *Banksy - Fraud or Genius*

Presented by Pepe Martinez The lecture will trace the story of Banksy's humble beginnings as a tagger on the streets of Bristol in the 1980's to one of the most recognisable names in the art world.

MEDSTEAD

HAMPSHIRE FEDERATION OF WI - MEDSTEAD

Gill Siddall

The May meeting of Medstead WI was the Annual Meeting where it was time to review the year just gone, hand out the various annual trophies, elect the committee and president for the coming year and look forward to the coming year for which an interesting programme of speakers have been booked. We've been very pleased to welcome 11 new members during the last year and we always look forward to more new members joining us.

Nationally the WI in 2025 passed a resolution 'Bystanders Can Be Lifesavers', calling on all WI members to learn or update themselves about dealing with cardiac arrest.

Unfortunately, statistically women are less likely to survive a cardiac arrest because many are reluctant to expose the chest of a female suffering the arrest. WI members the length and breadth of the country have been busy learning the procedures needed. With this in mind the Hampshire and Isle of Wight Ambulance are coming to the Medstead WI meeting on June 11th to take us through the procedure which could save a life. The hall has a defibrillator and we will be taken through how to use this vital piece of equipment. It has a pair of scissors in it for the swift removal of a bra should it be needed I'm told!

Medstead WI meets on the second Thursday of each month at 2pm in Medstead Village Hall.

Do come along and enjoy an afternoon with a good speaker, enjoy a cup of tea and a biscuit {sometimes cake} and make new friends. New members and visitors are always very welcome.

HAMPSHIRE FEDERATION OF WI – ROEDOWNS

Diana Constantine

In April a few of us enjoyed an evening walk to see the stunning local Bluebells.



It was such a sea of blue and smelt so beautiful amongst the trees.

We couldn't stop taking photos as it was such a great opportunity, particularly following our photography talk a few weeks before.

Imagine the photos are all blue (Ed) !



Our May meeting will be a little later in the month, so I will do a report in June.

Forthcoming meetings

13th May	AGM and supper
3rd June	Self guided walk around Winchester
1st July	Dogs for Autism
5th August	Portsmouth Harbour tour

Roedowns WI meet in the Wiltshire Room, Medstead Village Hall on the first Wednesday of each month at 19.30hrs. Guest speakers, outings and good company. Tea/coffee, biscuits, raffle and gift voucher prize at each meeting. Visitors and new members are very welcome. Contact Secretary on roedownssec@hampshire.org.uk Or President Jill Kerr 01420 564116.



'June is a love song written by nature' Patience Strong

Our May meeting had a focus on pests and diseases with Alan Horgan. He started his career in Scotland. Having his first job in horticulture at the Edinburgh Botanical Gardens. He became a horticultural adviser and specialised in understanding the difficulties of dealing with pests and diseases in nature in horticulture. He has worked and lived in many places in the UK including Scotland, Wales and Hampshire.



He talked about Honey Fungus. We learned it was edible but not very tasty! We saw how lichen and moss is a nuisance for our gardens but embraced by Japanese in their gardens. The pest vine weevils, spider mites, eel worms and carrot fly were talked about and how best to deal with them.

The bottom line is we can't stop them but can manage them best with nets, position in garden and using clean soil and so on. It was a very informative talk and we learned a lot about our garden challenges!

Diana Constantine won the flower competition in May for her peonies



On 16th May we had a very successful plant sale in the village hall. Many people came to buy plants and the hall was heaving with a wide variety of plants on sale.

June meeting- *'Sustainable and Wildlife gardening in our Changing Climate' with Beverley Exall*

Medstead Gardener's Club Programme 2026 www.medsteadgardenersclub.org
 Meetings at Medstead Village Hall. Doors open at 7pm with meetings starting at 7.30pm

Month	Date	Event
June	Tuesday 2nd	Sustainable and Wildlife Gardening in our Changing Climate Beverley Exall
July	Saturday 11th	Medstead Fete-Medstead Village Green
July	Saturday 18 th	Summer Show-Medstead Village Hall
August		No Meeting
Sept.	Tuesday 1st	Planting for Autumn Colour Antony Powell
Oct.	Tuesday 6th	Ferns and Grasses Chris Bird
Nov.	Tuesday 3rd	Getting the most from Your Garden Special guest speaker
Dec.	Tuesday 1st	AGM and Christmas Social (Members Only)

Programme subject to change Membership £12 per person Guests £3 per visit (Max 2 visits)

Some of the gardening jobs for June - Lift and store tulip bulbs. Give wisteria its summer prune. Support tall perennials. Cut back spring flowering perennials to promote another flush of flowers. Pinch out tips of fuchsias to promote bushier growth and more flowers. Cover fruits as they ripen to protect from birds. Water regularly all crops in pots. Use tomato feed on many vegetables for healthy crops including courgettes, tomatoes and pumpkins.

CLUB CONTACTS

Medstead Bowls: Dennis Church 01420 564475 dennis@windhamhill.plus.com

Medstead Players: Tania McCullough chairman@medsteadplayers.co.uk
or Secretary Julia Halls 07747 665 968 ; or publicity@medsteadplayers.co.uk

Medstead Tennis: www.medsteadtennisclub.org.uk

Alton Rotary: Roy Roberts 07768 070 572 Mike 07808 093 953

* * *

REGULAR FEATURES



Tim Gordon-Jones

Great news, the colony I thought may have lost their queen, have not lost her. Although I didn't see her (I'm rubbish at spotting queens) she has been laying eggs and I saw larvae and capped brood cells indicating she has been laying for at least 9 days. The same thing happened last year. I think she must have just gone 'off lay' during a cold spell and just needed a kick start to get going again. The brood I used from another colony must have done this as the pheromone it gives off is very powerful. It also prevents the workers from laying eggs even though they are not mated. The intention was that the workers would make an emergency queen cell from one of the eggs and that would hatch into a replacement queen in 16 days. There was no evidence of any queen cell so I don't think this happened. I'm not sure how old the queen is but perhaps she hasn't got long left. 'Proper' beekeepers mark their queens with a colour to indicate the year they were born. As I can hardly ever see them, I don't do this. When a queen is near the end of her useful life the workers will build one or more special 'supersedure' cells. When the new queen emerges, she will kill the old queen and take over.

The honey has been on full flow since the weather has improved and the best hive has four supers at various stages. Remember, the honey must be dried before being capped with beeswax before I can take it off the hive. Today I have prepared two supers to be removed. There are various methods for doing this. I insert an 'Excluder Board' beneath the super and the rest of the hive. This has two 'Porter escapes' in, which allow the bees to get into the rest of the hive but not to get back into the Super. This will allow me to remove the Super in a few days' time with much fewer bees in. The Porter escapes are like little springs that the bees can push open when coming out of the Super but can't go the other way. They are so clever they will stand in the way of the spring, preventing it from closing while other secrete Propolis (bee glue) on to the springs preventing them from closing when the standing bee moves out of the way.

As I have all three colonies in full production, I do not need any swarms. However, if you hear of one that is causing an obstruction, I'm happy to come and take it away. I am a member of the Basingstoke Bee club and subscribe to their 'Swarm Line' WhatsApp group. It has been really busy recently with swarms spotted in really unusual places. One was in a public car park, another on a trampoline. These odd locations are usually temporary, intermediate stop off points while they rest and find a decent place to set up a permanent home. Hopefully, the harvest will be good enough to have lots of honey on sale at the Shalden village fete in July.

Bee happy.



Pony News:

Broadlands Open Day – Saturday 2nd May



Three of our young participants enjoyed showcasing their skills on Saturday. They have all come such a long way and we are very proud of their achievements.



Paige, our Centre Manager, presents Suzanne with a special award. Suzanne has recently retired as a Trustee after over 60 years of involvement with Broadlands! Michael (in the background) received the Volunteer of the Year Cup!

We were delighted to welcome so many visitors to our annual Open Day. The displays in the main arena highlighted the remarkable progress our participants have made through their lessons. It was a joy for parents, carers, friends, and members of the local community to see these achievements first hand and to witness the special bond shared with our wonderful ponies.

The BBQ was in full swing, the kettle never stopped boiling, and there was an abundance of cakes for everyone to enjoy. A variety of side shows kept visitors entertained throughout the day, with the hobby horse obstacle course proving especially popular.

We also received a record number of entries for the fun dog show, making it a busy and challenging morning for our judges!



Quiz Night



Over 70 people turned out to support our annual Quiz Night at the end of April. A hot supper, a busy bar and lots of comradery made for a fun evening.

The 'Odd Jobbers' were our winning team, made up primarily from the Broadlands volunteer maintenance team.

Well done to everyone who supported us and helped raise £1,800!

South Region RDA Conference



A team of 13 of us headed off to the South Region RDA Conference, the first one for 9 years.

It was an informative, inspiring and fun day for us all.

The team was made up of Trustees, Staff and Volunteers and proved to be an extremely interesting day out!

Visit to Park House Stables, Kingsclere



We were delighted to enjoy a wonderful fundraising morning at Park House Stables. Guests were welcomed with coffee and cake before being driven up to the gallops, followed by the opportunity to meet some of the magnificent horses that call the stables home. Our sincere thanks go to Andrew and Anna Lisa Balding and their staff for their warm hospitality and for allowing us to experience such a beautiful and special place.

Upcoming Events –

We hope you can join us for our Summer Wine Tasting and for our next Tea at Three.

COME AND JOIN SIMON FROM THE NAKED GRAPE IN
TASTING SOME FINE SUMMER WINES

SUMMER WINE TASTING

FRIDAY 26TH JUNE
6.15 PM FOR 6.30 PM START

WILVEROD BARN, GU34 4AS

**£30 PER PERSON INC A CHEESE BOARD
LIMITED SPACES AVAILABLE**

TICKETS AVAILABLE VIA OUR WEBSITE
WWW.BROADLANDSGROUPRDA.ORG.UK/EVENTS



RAISING FUNDS FOR

Tea at Three

Friday 12th June

Join us for a relaxing afternoon meeting our gentle, friendly ponies. Enjoy a delicious selection of sweet and savoury treats, along with a cup of tea or coffee, all set in our peaceful surroundings.

There will be plenty of interactive activities for children of all ages, including colouring and a fun Hobby Horse Agility Course.

no booking required
ADMISSION FREE
Small charge for refreshments
EVERYONE WELCOME!

FRIDAY 12TH JUNE, FROM 3PM - 5PM
BROADLANDS GROUP RDA,
MEDSTEAD GU34 5PX

www.broadlandsgrouprda.org.uk



We Hope to See You There!

Thank you, as always, for your continued support of Broadlands Equine Therapy & RDA.

If you have any queries, please do not hesitate to contact us:

✉ office@broadlandsgrouprda.org.uk

COUNTRY MATTERS Witchcraft and Water

Julian Lewis

April had just 20 mm (0.81ins) of rain and May so far has 6 mm (0.24 ins) of rain. There are similarities to 2025 which was very dry during the summer and certainly this year's crops could do with a decent rain to produce good yields in 6 - 8 weeks' time. Grain prices have begun to rise – not really because of the Iranian situation but because many grain producing areas are dry and surveys of the crops are showing the percentage in good condition is dropping quite rapidly. The US Dept of Agriculture has reported that 69% of US crops are affected by drought conditions compared to 23% last year. Many European crops are short of moisture.

Looking forward to 2027 crops many in agriculture are concerned that fertilisers will be unavailable or very expensive and unaffordable for farmers to use to grow their crops. The problems in the Middle East, where many fertilisers are manufactured because of the usual availability of cheap oil which is essential in the production process, means that fertilisers will not be available – the damaged factories will not be repaired in time to produce nitrogen for 2027 crops. Do not underestimate the seriousness of this situation – crops that we eat will yield 40 to 50% of their usual tonnage without fertiliser and the resultant quality will be poor and unsuitable for bread making.

2026 seems to be racing through the calendar so quickly – we are already in mid-May and the summer solstice is approaching. The farming year is rapidly going through the different seasons – lambs are playing in the fields, grass for silage has been cut, the crops are coming into ear and the autumn barley crops will be ready for harvest in late June / early July so only 6 to 7 weeks away.

The important final crop leaf (leaf 1 or flag leaf) in wheat has been emerging in most crops during the last week (5th - 10th May) and now needs protecting from disease. About 41% of the wheat plant's yield comes from the flag leaf so ideally it is large to intercept lots of sunlight to photosynthesise and produce more grain. Some varieties have very erect flag leaves but do not shade other plants so much whilst others are more angled and intercept more sunlight but do shade their neighbours. The important issue is to keep the leaf green and free from disease which tends to be worst in the west of the country, which has a higher rainfall, with the predominant disease being septoria tritici in March April and

septoria nodorum leading up to harvest. In the drier eastern counties yellow rust in the winter and early spring are a problem with brown rust being more serious as the temperatures rise later in the growing season. Some of the other diseases which can affect UK wheat crops include mildew, take all (a root disease) and eyespot. Fungicides are applied as a protectant medicine to prevent these diseases.

A business article that I have read has fantastic news until the detail is examined. The UK Department of Energy Security and Net Zero has proudly announced that the nation's electric supply industry is producing 1% lower emissions partly due to the closure of power stations. However to supply the electricity that the UK needs we have resorted to importing greater amounts of power from the EU – now 13% of the nation's needs. The imported electricity is obviously produced abroad with all of the associated carbon and CO2 emissions. The UK Government conveniently treats all imported power as zero carbon, even if generated by gas or coal, as it is not produced in the UK. Surely this is blatant propaganda – the emissions from electricity produced abroad should be fully accounted for in the UK balance sheet of CO2 and carbon emissions.

On the subject of wacky logic, I passed the time of day last week with a delightful lady from the water company that supplies our most precious commodity. It has been identified that there is a large leak within the pipework in Bentworth or surrounding area. The lady was using a sounding rod on the meters that she could locate to listen and hopefully identify the sound of rushing water which would indicate that a leak was nearby. I jokingly suggested that as a water diviner (about 40% of the population can get some response from using divining rods) I could locate some of the pipes for her. She agreed that some of her colleagues used to use divining rods that were very effective at locating pipes, leaks and other underground features such as cables and it was an effective part of improving the efficiency of the business. However, the use of divining rods is now banned by the water company as it was thought to involve **witchcraft** and was therefore not politically sustainable. What a bonkers world when a proven method of efficiently locating water is now deemed to be otherworldly and unacceptable. She did admit some of her colleagues still used rods because it saved so much time but had to make sure they were not seen using them to avoid disciplinary action.





HAMPSHIRE FARMERS MARKETS

Alton Saturday June 13th 10am - 2pm

- Sunday, June 7 Romsey Farmers' Market • 10:00 AM - 1:00 PM
- Sunday, June 7 Petersfield Farmers' Market • 10:00 AM - 2:00 PM
- Sunday, June 14 Winchester Farmers' Market • 9:00 AM - 2:00 PM
- Sunday, June 14 Whiteley Farmers' Market • 10:00 AM - 2:00 PM
- Saturday, June 20 Emsworth Food Festival • 10:00 AM - 3:00 PM
- Sunday, June 21 Alresford Farmers' Market • 10:00 AM - 2:00 PM
- Saturday, June 27 Ringwood Farmers' Market • 10:00 AM - 2:00 PM
- Sunday, June 28 Winchester Farmers' Market • 9:00 AM - 2:00 PM

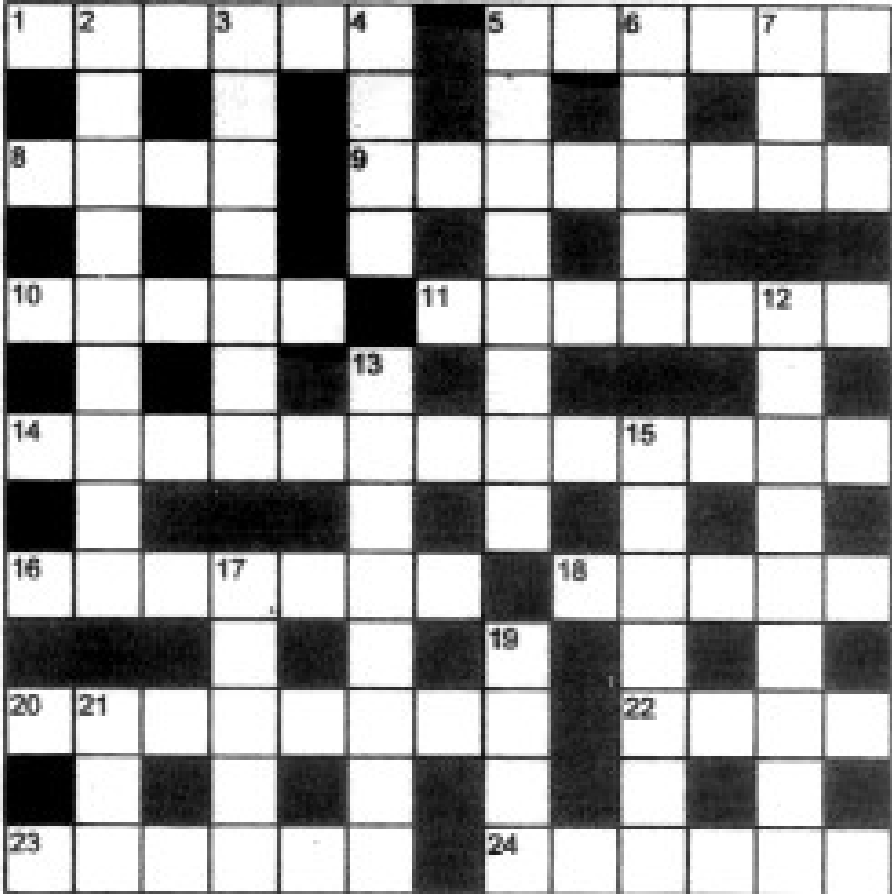
HAMPSHIRE COUNTY COUNCIL - ALTON LIBRARY

Mon	Tue	Wed	Thu	Fri	Sat
9.30am to 1.30pm	9.30am to 5pm	Closed	9.30am to 5pm	9.30am to 5pm	9.30am to 5pm

BUS TIMETABLE run by Cresta Coaches of Alresford (01962 773236) only on Tuesdays and Fridays (NOT Saturdays) - **SERVICE 208**

Alton High Street	9.35	11.35	13.35
Beech Well House Road	9.43	11.43	13.43
Medstead War Memorial	9.49	11.49	13.49
Bentworth The Star	9.55	11.55	13.55
Alton High Street	10.09	12.09	

CROSSWORD

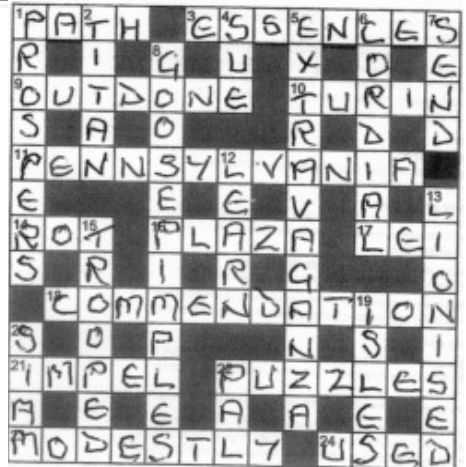


Clues Across

- 1. Leave (6)
- 2. Protectively Envelope (6)
- 8. Israeli Airline (2-2)
- 9. Show up again (8)
- 10. Pain (5)
- 11. Moral (7)
- 14. Loyalty (13)
- 16. Lacking taste (7)
- 18. Tempest (5)
- 20. Asking formally (8)
- 22. Police bust (4)
- 23. Cerebral (6)
- 24. Abdominal organ (6)

Clues Down

- 2. Edify (9)
- 3. Capitol of Georgia (9)
- 4. Ripped (4)
- 5. Scold (8)
- 6. Italian Island (5)
- 7. Eggs (30)
- 12. Confident (9)
- 13. Authoritative (8)
- 15. Organic (7)
- 17. Nincompoop (5)
- 19. Eras (4)
- 21 Born as (3)



EVENTS

THE KINGS ARMS

**THE KING'S ARMS
YOUTH PROJECT**

**QUIZ
NIGHT**

Support your local
Youth Centre

**Friday
5th June**

Alton Assembly Rooms
Doors open: 6:30pm
Quiz starts: 7pm, ends 10pm

Ploughman's included
Raffle and Bar
(No BYOB please)

£15
per person
Teams up to 8
Individuals welcome

KA

KA

For purchasing tickets or further
information please contact:
jono@thekingsarms.org.uk

RAISING FUNDS FOR



Tea at Three

Friday 12th June

Join us for a relaxing afternoon meeting our gentle, friendly ponies. Enjoy a delicious selection of sweet and savoury treats, along with a cup of tea or coffee, all set in our peaceful surroundings.

There will be plenty of interactive activities for children of all ages, including colouring and a fun Hobby Horse Agility Course.



no booking required
ADMISSION FREE

Small charge for refreshments
EVERYONE WELCOME!



- FRIDAY 12TH JUNE, FROM 3PM - 5PM
- BROADLANDS GROUP RDA,
MEDSTEAD GU34 5PX

www.broadlandsgrouprda.org.uk

COME AND JOIN SIMON FROM THE NAKED GRAPE IN
TASTING SOME FINE SUMMER WINES



SUMMER WINE TASTING

FRIDAY 26TH JUNE

6.15 PM FOR 6.30 PM START

WILVEROD BARN, GU34 4AS

£30 PER PERSON INC A CHEESE BOARD
LIMITED SPACES AVAILABLE



TICKETS AVAILABLE VIA OUR WEBSITE
WWW.BROADLANDSGROUPRDA.ORG.UK/EVENTS



St Mary's Church
Upton Grey

more+

North Hampshire Downs Churches



Church Fete
2.00pm Saturday
6th June
The Old Vicarage
Church Street
Upton Grey RG25 2RB

Tombola/Raffle

White Elephant/Garden plants/Books

Cakes/Cream teas/Ice creams

Pimms/Toys/Mobile Bell Ringing

Brass band/Punch & Judy

Classic Cars/Children's games

Admittance £2/ Under 14 free

Parking on Church Meadow Church Street

Church Street, Upton Grey, Hampshire, RG25 2RB

www.uptongreychurch.co.uk



HAMNET

Friday 12 June | 7:30pm

Screen by the Green

beechvillage.org.uk

community cinema with heart and soul





ADULT

Learning



IN LIBRARIES



Expressive Watercolours

Alton Library

Saturdays 13 June - 4 July 10am - 12:30pm

Free tuition, £10 materials payable to tutor

Booking is essential, please visit

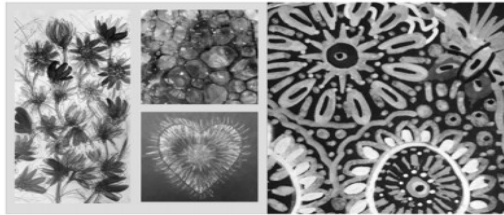
<https://shop.hants.gov.uk/collections/library-courses> to book

your place. If you have issues booking online please contact

branch staff or call 02392 232957



IN LIBRARIES



Art for Wellbeing

Alton Library

Saturdays 13 June - 4 July 2pm - 4:30pm

Free tuition, £10 materials fee

Booking is essential, please visit

shop.hants.gov.uk/collections/library-courses to book your

place. If you have issues booking online please contact branch

staff or call 02392 232957





People's Emergency Briefing

Community Screening



ALTON CLIMATE ACTION NETWORK
invites you to a screening of the
PEOPLE'S EMERGENCY BRIEFING FILM

FRIDAY 19 JUNE at HSDC ALTON COLLEGE – MARTIN READ HALL
(with our thanks)
Edward Road GU34 2HU (Car Park D)

**FOLLOWED BY AN OPEN DISCUSSION
ON WHAT WE CAN DO**

Doors open 7 pm, film starts 7.30 pm. Event finishes 9.30 pm

PLEASE BOOK A PLACE - FREE VIA THE QR CODE

An eye-opening film featuring nine leading UK scientists and experts updating us on the latest in the climate and nature crisis and its impacts on everyday life

Extreme weather – Food security – Health – Cost of living

Based on the NATIONAL EMERGENCY BRIEFING IN WESTMINSTER

Nov 2025 <https://www.nebriefing.org>

Featuring Chris Packham, Deborah Meaden, surprise guests
and a range of Brits



TELL YOUR FRIENDS AND NEIGHBOURS
The film is not recommended for under 16s





Hampshire
County Council

Library Service



Emergency First Aid at Alton Library

Saturday 20 June 9:45am - 4:45pm

FREE tuition, optional £25 certification fee

Booking is essential, please visit

<https://shop.hants.gov.uk/collections/learning-in-libraries> to book your place. If you have issues booking online please contact branch staff or call 02392 232957



| Gigs by the Green |

Saturday 20 June, 7:30pm

Laura Jurd

with guests

Rob Luft, Owen Spafford



Live music in the heart of Beech

beechvillage.org.uk



National
Theatre
Live

LES LIAISONS DANGEREUSES

Thursday 25 June | 7pm

Screen by the Green

beechvillage.org.uk

community cinema with heart and soul



Waverley Singers
St Lawrence Church, Alton

Sat 27 June 2026
7pm

Crowning Glory

Join us for an evening of magnificent coronation music
featuring Mozart's *Coronation Mass* and much more.



SOPRANO - BETH STIRLING MEZZO SOPRANO - NIAMH KEARNEY
TENOR - JACOB COLE BASS - WILLIAM JOWETT
ORGAN - PHILIP SCRIVEN CONDUCTOR - RICHARD PEARCE

ticketsource.co.uk/waverleysingers




£17 in advance, £19 on the door
£5 students
u16 free subject to conditions



Retiring collection in aid of Treloar's





Alton Choral Society
Summer Concert

Saturday 27th June, 7pm

Alton Methodist Church

Featuring:-

Famous Opera Choruses and Arias

Tickets £12 adults, children under 16 free
Available through www.altonchoral.org.uk
or on the door

In aid of Alton Foodbank



BENTWORTH

FETE

2026

Saturday 4th July | 2pm-5pm

Opening at 2pm with performances from St Mary's pupils

ST MARY'S SCHOOL FIELD AND JUBILEE HALL

A traditional village fête supporting local groups and charities

WHAT'S ON:

COCONUT SHY · TOMBOLA
GRAND RAFFLE WITH FANTASTIC PRIZES
LOCAL CRAFTS, STALLS & PRODUCE
CHILDREN'S GAMES & ACTIVITIES
FUN DOG SHOW & RACES – ENTER ON THE DAY
BBQ · BEER TENT · PIMM'S BAR
TEAS & HOMEMADE CAKES
ICE CREAMS · CHOCOLATE STALL
BOTTLE STALL

Shalden Village

* Stalls & Activities include: *
* Dog Show * Bottle Stall * Ice Cream *
* Bouncy Castle * Shalden Honey *

*
Teas
*
BBQ
*
Books
*

Fete

*
Plants
*
Pimms
*
Raffle
*

* Classic Cars * Cakes & Preserves *
* Skittles * Plate Smashing * Gifts *
* Coconut & Teddy Bear Shy * Splat the Rat *



Sunday July 5th 2pm
Shalden Park Farm

All proceeds to Local Charities



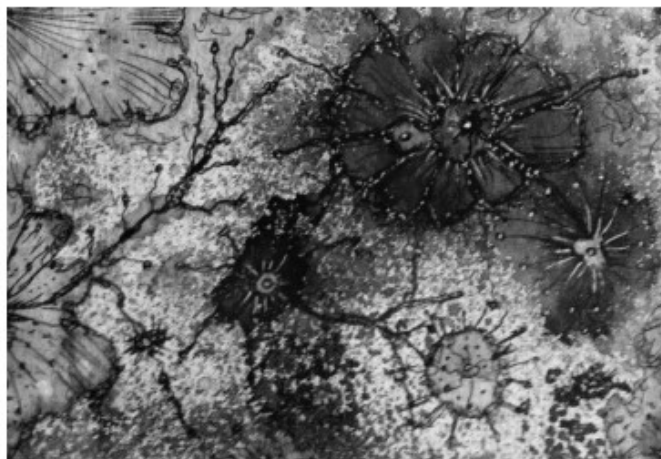
Hampshire
County Council

Library Service

ADULT

Learning

IN LIBRARIES



Serene Summer Blooms Workshop with Jacky Alton Library

Saturday 25 July 10am - 12:30pm

£28.50 Tuition plus £6 materials fee

Booking is essential, please visit

<https://shop.hants.gov.uk/collections/learning-in-libraries> to book your place. If you have issues booking online please contact branch staff or call 02392 232957



BEECH FEST 26

Remember the Feeling



Sunday 26 July

Beech Village Green

beechvillage.org.uk





The Benefice of the Resurrection, Alton,
warmly invites you to an evening of

Curry, Comedy & Christianity

with Mark Greenwood

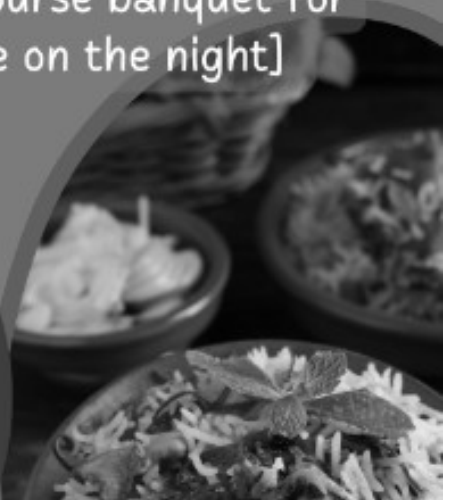
The Spice Bank on Monday 22nd
June 2026 at 6.30pm

Including a three-course banquet for
only £20 [payable on the night]

Book your
place

rosemarylyn@btinternet.com

See church or
www.resurrectionbenefice.org
for menu choices



SERVICES FOR JUNE 2026

31st MAY – TRINITY SUNDAY

8a.m. BPC Communion St Lawrence

10.30a.m. GAP / POTR / BLS Altogether Communion Service

St Lawrence, with Bishop Philip

BENTWORTH LASHAM MEDSTEAD SHALDEN

7th JUNE – THE FIRST SUNDAY AFTER TRINITY Proper 5 Green

Holy Communion (CW)	10.00a.m.	11.00a.m.	10.00a.m
Holy Communion (CW)			
Parish Communion (CW)			

14th JUNE – THE SECOND SUNDAY AFTER TRINITY Proper 6 Green

Holy Communion (CW)	10.00a.m.	8.00a.m.	
Holy Communion (CW)			

21st JUNE – THE THIRD SUNDAY AFTER TRINITY Proper 7 Green

Holy Communion (CW)	11.00a.m.	11.00a.m.	6.00p.m.
Parish Communion (CW)			
Evensong			

28th JUNE - THE FOURTH SUNDAY AFTER TRINITY Proper 8 Green

Holy Communion (CW)	10.00a.m.	11.00 a.m.	
Cafe Church (in the hall)			

POTR Services for June 2026

7th June

8am BPC Communion	St Lawrence
9.30am Family Service	St Lawrence
10.30am POTR Altogether Communion Service	St Lawrence

14th June

9.15am Communion Service	St Peter's
9.30am Morning Worship	Holy Rood
10.30am Communion	St Lawrence
3pm Afternoon Worship	All Saints
4pm Church@4	Parish Centre
6pm Evening Prayer	St Lawrence

21st June

9.30am Communion Service	Holy Rood
10.30am Communion Service	All Saints
10.30am Family M'g Worship	St Lawrence
3.30pm Choral Evensong	St Lawrence

28th June

9.15am Communion Service	St Peter's
10.30am Communion Service	St Lawrence
4pm LEGO Church	Holy Rood
6pm Informal Evening Worship	St Lawrence

**Every Wednesday 10am
Holy Communion All Saints**