

The Ampfield Messenger



*The Parish Magazine of
St. Mark Ampfield*

February 2024
Vol 74 Issue 2 £1

www.acnb-church.org

The Parish Church of St Mark, Ampfield

Our vision: To be channels of God's love in the world

Ministry Team

Rev. Vanessa Lawrence Tel: 023 80 737617
Email: vicar@acnb-church.org
Mrs. Sally Kerson Tel: 02380 737617
Mr. Jonathan DeVile Tel: 02380 736522

For any enquiries about baptisms, weddings or churchyards please contact the parish office, telephone no: 023 8073 7617

Email us at: **office@acnb-church.org**
Website: **www.acnb-church.org**
Facebook: **www.facebook.com/acnbchurch/**

The office is staffed 9 - 12 noon, Monday, Wednesday & Friday.
Please let us know if you have any news of those who are sick, in trouble, leaving or about to arrive.

Churchwardens: Mr. Mark Braund Tel: 01489 860218
Email: markb@acnb-church.org
Mr. Phil Budden Tel: 07799 435 715
Email: philb@acnb-church.org
Secretary PCC Jennie Edwards Tel: 02380 365041
Email: jenniee@acnb-church.org
Treasurer PCC Mrs. Pamela Morffew Tel: 02380 411146
Email - pamm@acnb-church.org

Cheques should be made payable to Ampfield PCC please

Gift Aid Secretary Mrs A Jeffery, Tel: 02380 252865
Email: adriennej@acnb-church.org
Magazine Editor Chris Kerr, Tel: 01794 367104
E-mail: chrisk@acnb-church.org
Advertising Kate MacCallum Tel: 07738467350
Email: katem@acnb-church.org

DEADLINE: The third Friday of each calendar month.

Contributions to this magazine are always welcome, however it may be necessary to edit or shorten articles. Note that the views and opinions expressed in this publication are not necessarily those of the editor or the Parochial Church Council. Advertisements in this publication do not carry the endorsement of the editor or the

Contents

4. Letter from Vanessa
5. Regular Service Pattern
- 6 - 10 Benefice News
- 11 - 14 Village News
15. Identify the Plant
From St. Mark's Register
16. Remembering Florence Suckling: Part 1 by
Raymond Metters
18. Next Year (Dementia Diary) by Lyn Smith
19. Ron & Stella's Quiz Night
20. Clue to Identify the Plant
Photos of St. Mark's churchyard in February by
Charlie
21. Recipe for Chestnut Soup by Agne
22. Castaway of the Month - Ian Case
24. Ampfield Art Group - Gallery
26. Friends of Chapel Wood by Graham Roads
28. From the Messenger Archives
30. Church Screens Part 1 by Liz Hallett
32. Thought for the Month by Ron
33. Jokes
34. A Prayer for Lent
35. Answers to Identify the Plant and Ron and Stella's
Quiz
36. Rotas for St. Mark's

Cover photograph by Charlie Allen

Letter from Vanessa

Dear Friends

At toddler group this morning I was chatting to someone about the difficulties of getting up and out of the house at this time of year. Its dark, and cold and we are all lacking in energy! The twinkly Christmas lights have been taken down, and it feels like a long slog until the warmth of spring. Many people struggle with low mood at this time of year.

I listened to a podcast with Dr Rangan Chatterjee recently, focusing on happiness. He was suggested some key components of happiness that we can all pay attention to in order to help lift our spirits. Exercise, chatting to strangers at the supermarket, spending less time on our phones, and eliminating choice were just a few of the things that were suggested.

But a key part of leading a contented life is to have a sense of meaning and purpose – a reason to get out of bed, a sense of what life is all about for us. Paying attention to our spirituality; where is our place in the world – what is our relationship with the Divine, whatever we conceive that to be – can be a significant way to build a sense of peace. Coming to church, prayer, meditation – all of these are good ways to take stock of where we are on our spiritual journey.

So perhaps a ‘new year, new you’ mindset might include connecting with church and finding out how we can help you to look for ways of engaging with and exploring your own spirituality, whatever that might look like.

Vanessa



Weekly service pattern

Sunday Services

	All Saints	St Mark	St Denys	St John
1st Sunday	11:00 Messy Church	09:30 Tidy Church	09:30 BCP Matins or Communion	11:00 Communion or Morning Prayer
2nd Sunday	11:00 Communion	09:30 Communion	09:30 informal Morning Prayer	
3rd Sunday	11:00 Communion	09:30 Communion or Morning prayer	09:30 BCP Matins or Communion	
4th Sunday	11:00 Communion	09:30 Communion		
5th Sunday	11:00 Communion	09:30 Communion		

Midweek Services

When	Where	What
Tuesday, 10:30	St Mark, Ampfield	Small group Communion in St Mark's room, followed by coffee
Wednesday, 19:00	All Saints, North Baddesley	Communion in a peaceful candle lit space in the midst of your busy week

Join us online

Sunday 17:00 every week: BCP Evening prayer

Meeting ID: 555 680 7118 and Passcode: a or

<https://us02web.zoom.us/j/5556807118?pwd=Om5SL0RVbktqTnN5emVHc0tnRTVNZz09>

Benefice News

Friends for Lunch—Christmas meal at Ampfield Golf Club



On December 15th we sat down to our Christmas Lunch at Ampfield Golf Course, this is the 5th year we have availed ourselves of their wonderful festive food. There were 22 lunchers in all and the atmosphere was one of fun and merriment. We are so fortunate to have this local option for our lunch and the golf club are always very accommodating to our needs. They even give us a little discount! Next lunch is on Wednesday 21st February: please ring Pam on 02380 411146 to book a place.

St. Mark's Stall at the Ampfield Market

Sat 3rd February 10am - noon

We're back from the Christmas break selling gifts and bric-a-brac. Thank you to all of you who have donated so generously. If you have anything for the February market please contact Chris or Kate (see p.2 for contact nos.).

Benefice News

Running the London Marathon in aid of the NSPCC

Our safeguarding officer, Jo, is running the London Marathon in aid of the NSPCC and is fundraising at [Welcome Café](#).

**She will be hosting a raffle at [Welcome Café](#) on
Thursday 8th February
Please do come and support her.**

Jo writes:

I started my running journey, about 6 years ago with “Couch to 5k.” At the time 5k was my target, and it seemed quite unachievable, but achieve it I did, and now, many miles and events later, here it is the big one - the London Marathon! My goodness, I am terrified and super excited in equal measure, and determined to reach the finish line. My dear Dad would be so proud, and I know that he is somewhere always cheering me on, through every mile I ever run. With such a momentous event I felt I just had to do it for a charity, and I couldn't be more pleased that the NSPCC have chosen me as one of their runners for 2024. They do so much great work for children, who don't have the same loving start in life that I had. As a counsellor, of course, Childline, which the NSPCC also run, is very dear to my heart, as it gives children access to someone, who will listen, and who is always there; I am so chuffed that my fundraising will help towards this fantastic work too.

I will be at:

**Arthur's Play Space, on
Wednesday 31st January
and**

**All Saints, at their coffee
morning, on
Thursday 8th February**
where I will also draw the
raffle. Please come along and
support me and this great cause, if you can.



Thank you, Jo

Benefice News



St Mark's Room and Access Improvements

The planned improvements to St Mark's Room have progressed, but we have a long way to go! We now plan to create the new double doors, terrace and ramp on the East side of St Mark's Room which will make the view from the terrace and labyrinth much more open across the churchyard, and also shorten the distance from the car park. We've combined this with increasing the size of the kitchen, and upgrading the accessible toilet, to make Phase 1 of the work. This will require substantial success with both grants and fundraising, and we have just applied to Test Valley for a Community Asset Fund grant. Although we've had some generous donations and successful fundraising events, we still need to raise substantial funds ourselves.

We've just completed critical electrical safety work and still have some further important roof and stonework repairs to the historic building but we want to try and also deliver the new works. If anyone has new fundraising ideas, or would like to be involved, please do get in touch.

Looking further ahead, we plan in Phase 2 to create ramps through the church making the whole building step free. Phase 3 will improve insulation in St Mark's Room to make use of it sustainable, and more pleasant. Phase 4 is to create a labyrinth in front of the terrace, underneath our marvellous Cedar of Lebanon. Labyrinths have been used for many thousands of years as an aid to wellbeing, prayer and meditation. We hope that this will be an addition valued by the whole community of Ampfield. **Phil**

Benefice News



Lunches at St Mark's Ampfield

Fridays

16th February 1st March 15th March

Join us for a light lunch of home-made soup, bread & cheese and fruit

Come any time between 12noon and 2pm

St. Mark's Room

*Donations will go to Romsey Foodbank and
The Winchester Beacon (Night Shelter)*

Just turn up, or for more details phone

Chris: 01794 367104

The Closure of Ampfield Primary School

After the decision made by Councillor Edward Heron on the 16th January, I can confirm that the formal public consultation begins today, Friday 26th January 2024. Notice can be found here:

<https://www.hants.gov.uk/community/publicnotices>

Within five weeks from the date of publication of these proposals, any person may object or make comments on the proposal by sending them to:

Mark Saunders
Senior Strategic Development Officer,
Children's Services Department,
EII Court North,
Winchester,
Hampshire
SO23 8UG e-mail: strategicplanningunit@hants.gov.uk

**Amber Vidler Executive Headteacher
Federation of Ampfield & John Keble C of E Primary Schools**

Benefice News

Children's Craft and Play

We are busy organising this very popular event which is going to take place on the morning of Tuesday 13th February. If you are able to help on the day that would be fabulous. If that isn't possible we do need help with some craft preparation, this usually involves cutting bits of paper out! Please let us know if you can support this event in anyway.

Pop-up Spring Craft Market

Due to the very successful Christmas Market we are holding another one on Tuesday 5th March from 10.30 - 4pm in All Saints. This is a chance to buy some hand crafted gifts for Mothering Sunday and Easter.

Sunshine Saints

Every Friday, 10 - 11:30am, we welcome families to the **Sunshine Saints baby and toddler group** in All Saints Church.

Diddy Disciples

Every Wednesday during term time, 9:15 - 10am, we welcome preschoolers, and their grown-ups, to join us for **Diddy Disciples at All Saints**. In December the sessions will focus on the Christmas story, so join us for refreshments, singing, craft and fun. way.

Welcome Café at All Saints Church

Thursdays 10am - 12 noon.

An opportunity for everyone, especially those lonely or bereaved to meet and enjoy a coffee (no charge, donations are welcome)

Village News

Thriving Community Workshop 2 – Monday, 26th February 2024, 5:45pm at Ampfield Village Hall

Our second session will be held on Monday, 26th February 2024 at 5.45pm for coffee, light refreshments and networking for a 6pm start. It would be great to see you at the Ampfield Village Hall.

We know you are the experts on your local community, so in preparation for the second workshop, we would like to ask you to give some further thought to the work we started in workshop one (with other people from your organisation, if you get the chance).

In the first workshop, we explored the building blocks which are essential to how every community “works”. These are listed below, and the attached document will give you a reminder of what each one means:

- ***Buildings, Places, Spaces where communities come together***
- ***People Participating in and Contributing to their Community***
- ***People Enjoying Their Local Environment in a Sustainable Way***

Valuing Diversity – Where all Voices are Heard and it’s a Welcoming Place

We’d like you think about the things you value most in your area and why that is the case. In addition, we’d like you to give some thought to “what’s missing” under each heading. This is a great opportunity for you to tell us what is most needed in your community so we can begin to explore how to support you through the use of grants and networking opportunities. If you get a chance to send in your ideas by Wednesday 21st February that would help. However, if that is not possible, bring them along to the event itself.

We would be grateful if you could please RSVP by the 21st February 2024. If you have any dietary requirements, please do let us know in your response to ensure that you are catered for.

Finally, if you think there are representatives from other organisations that should also be involved, please feel free to send their details to one of the Community Engagement Officers, Louisa Rice at LRice@testvalley.gov.uk (07703 346953) or Antony Chapman at AChapman@testvalley.gov.uk (07768 712813).

Councillor Yalden

Village News

The Ampfield Market

The Market was very successful indeed during the autumn months with many new customers . The Christmas Raffle in December raised £123 for the PCRF in memory of Martin Trotter and Liz Easterbrook . Thank you so much everyone for all your support in 2023. The Market opens its doors again on February 3rd 2024 and the team look forward to welcoming you back again .

New members needed for the Village Hall Committee

The Village Hall Committee is looking for new members with lots of fresh ideas ! If you would like to be part of our enthusiastic team please contact julie@ampfield.org.uk for more information. Our AGM will take place in the hall on Monday 25th March 2024.

A new Pilates class on Thursdays at the Village Hall

Pilates with aplomb started a new class from beginner to advanced on the 11th January at 6.15pm. Booking is essential. Email hello@pilateswithaplomb.com for more information. Trial block running for 5 weeks - intro price £50 for the block.

Ampfield Bridge Club

Ampfield Bridge Club is a friendly club that plays duplicate Bridge every Tuesday evening in Ampfield Village Hall at 7.00 pm until 10.00 pm. New members are very welcome. If you are interested, please contact Janet on 07879915726 or email janetwallace1@hotmail.co.uk.



**The
Ampfield Market
(Established in 2000, now in its 24th year !)**

**will take place
On
Saturday 3rd. February**

**From 10am to 12noon
in Ampfield Village Hall
(SO51 9BJ)**

Our Market has a great reputation, we regularly sell fresh fruit and veg supplied by Hansards in Awbridge and delicious bread and cakes supplied by Matts Bakery. Honey, preserves, plants and fresh flowers. Cards, wrapping paper and books. Collectables, unusual crafts and jewellery. Clothes, toys and puzzles. Bric a brac, seasonal treats and much much more !

**We serve fresh coffee and a wonderful selection of
cakes throughout the morning.
Come along with friends and family to enjoy this special
monthly community event.**

Parking and admission are always FREE.

All proceeds support the Village Hall. Registered charity no.
1057353

Contact Julie on 023 80254587 or Julie@ampfield.org.uk for
table bookings etc.

Next date: Saturday 2nd March

What happens in the Ampfield Village Hall every month?

MONDAYS

PILATES WITH HANNAH – Two sessions in the morning. Details at www.pilateswithaplomb.com

AMPFIELD PARISH COUNCIL regularly meet on a Monday evening for their ordinary meetings, planning meetings and other meetings. Details at www.Ampfield.org.uk

AMPFIELD CLICKERS informal and friendly, resumes knitting, crocheting, skill sharing and chatting (!) 3rd Monday evening Jan 2024.

Contact Jo on 07970 509450. Email joannehatley@aol.com

TUESDAYS

AMPFIELD BRIDGE CLUB friendly duplicate bridge. Every Tuesday (except at Xmas time) from 7pm to 10pm. If you require a partner or want more information contact Janet Cox on 07879 915726 or email janetwallace1@hotmail.co.uk New members always welcome.

WEDNESDAYS

TODDLER SENSE SALISBURY – two morning sessions. 13 months to 4 years. Call Sian on 07984 051713 or Email: salisbury@toddlersense.co.uk

1st AMPFIELD BROWNIES meet every Wed. evening during term time. 6pm to 7.30pm Tel. Sue Moore 01794 523947

ROMSEY MODELLERS Build model kits? Join this club on the 1st and 3rd Wed. of each month 8pm to 10pm.. www.romseymodellers.co.uk

THURSDAYS

YOGA MORNING with Diana Craven 9.30 to 11.30am

E-mail: diana_craven@hotmail.com for details.

AMPFIELD ART GROUP meets Thurs. afternoons during term time 2pm to 4pm. All abilities welcome Contact email: Julie@ampfield.org.uk

(NEW PILATES CLASS planned, Thursday evenings from January '24)

FRIDAYS

YOGA ON FRIDAY MORNINGS with YogaByGaynor 9.30 to 10.30am All levels, Gentle, Vinyasa Flow Yoga. All welcome. Facebook:

@yogaByGaynor OR Email: yogabygaynor@yahoo.com

SATURDAYS

VILLAGE MARKET (Established 2000) (see p.13)

Ring Julie on 02380 254587. This is a great event to meet up with people.

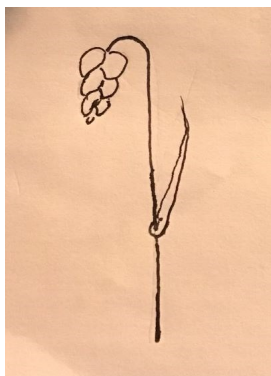
CARD MAKING WORKSHOP WITH VANESSA. A range of crafts, monthly, 10am to 4pm. Details from Vanessa 01794 515490 or email Ampfieldcards@gmail.com

For general enquiries and hall bookings tel. Martin Hatley 07970 501050

Or visit our new website: www.ampfieldvillagehall.org.uk Or E mail: info@ampfieldvillagehall.org.uk

SEE OUR NEW WEBSITE www.ampfieldvillagehall.org.uk and take a virtual tour, book the hall or buy tickets.

CAN YOU IDENTIFY THIS PLANT GROWING THAT WAS GROWING NEAR A GRAVE IN ST. MARK'S CHURCHYARD IN SUMMER 2023?



FOR A HINT, GO TO P. 20



*From the St. Mark's
Register*



The funeral of Valerie Vining took place on 1st.
December in St. Marks Church and afterwards burial in
Chapel Wood.

Please remember Valerie in your prayers

Remembering Florence Suckling: *“When the Colours Changed at Ampfield”* Part 1

by Raymond Metters



December 14th 2023 was the centenary of Florence Horatia Nelson Suckling's death.

With high-churchmen, Reverend John Frewen Moor and Thomas' brother, Reverend Robert Alfred John Suckling, as joint celebrants in a church designed by Keble, one could expect a strict liturgical service for the choral wedding of Thomas and Florence Suckling on a glorious day in September 1876. The groom's preferences would appear otherwise - he certainly found Romsey Abbey far 'too high'.

The romance sparkled at Barsham, where Thomas lived with his brother. The many romantic letters sent from the lieutenant, when commanding HMS *Renard* in 1874 in the South Seas, have survived. Most begin with 'My own darling little wife', two years before the wedding!

Two Hampshire newspapers highlight the dominating and contrasting colours of flowers and garments. The bride, dressed in white silk, wore a veil with a wreath of orange blossoms. Crampmoor children, belonging to the 'Army of Kindness' instituted by Florence, proudly displayed their bright 'humanity badges'. They wore blue and white outfits, while sporting sailor hats bearing ribbons similar to those used by sailors on Lieutenant Suckling's ship. The bridesmaids wore cream muslin dresses with maroon silk trimmings. Each carried an expensive ring, provided by the bridegroom, and adorned with a jewel brought from the Fijian islands.

Cont. ...

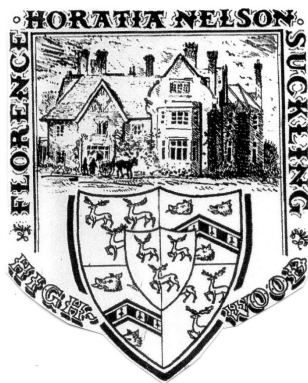
...cont.

The school children added to the colour by strewing flowers, as the happy couple left the porch gateway to the rousing sound of Mendelssohn's 'Wedding March'. The crowd dispersed, the choir to the school-room for a dinner, others to Highwood, the children sitting on the lawn enjoying the special wedding cake made for them.

Black replaced the joyous colours of 1876 in the following year, when mourners assembled in the graveyard of St Mark's. Robert William Shelton Suckling, the heir to Tom and Florence, had died, aged exactly two months. It was in August, the month of the couple's 1876 marriage banns. Romsey's doctor, Spencer Simpson, wrote on the death certificate the ominous words "Cerebral Meningitis". There would be no more children.



Thomas Suckling



Raymond Metters

Next Year (Dementia Diary)

by Lyn Smith

I drop the dying year behind me, like a shawl, and let it fall
does the prospect of the new reflect the old
no dizzying heights, no wild crescendos
never an orchid or the velvet petals of a rose
more like a field of daisies, pretty but mundane
I have never travelled to this place before
there is no guidebook or instruction
the memories of love sustain me
like photos from the past, they bring
negatives to life and colour inbetween
the overpowering silence is the worst
no interaction, conversation or recall
inability to retain information worst of all
next year I could jump over a rainbow
knit fluffy clouds into a blanket
or polish a unicorn's horn or maybe
just more day by day grey
punctuated with friends, flowers and laughter.



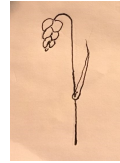
Ron & Stella's Quiz Night

1. The Eiffel Tower was opened in 1889 in Paris. What other structure, built by the same designer, was dedicated three years earlier?
2. Chandlers Ford railway station was re-opened in 2003 by which local garden enthusiast television personality?
3. What is the official national anthem of the United States of America?
4. Globe and Jerusalem are types of what?
5. How many Lord of the Rings films are there?
6. Which planet has the most gravity?
7. Which mammal has no vocal chords?
8. What is the highest grossing Broadway show of all time?
9. What is the capital of India?
10. Where is recognized as the location of the hottest temperature ever recorded on earth 134 degrees F (56.7C)?

Answers on p.35



**PLANT CLUE:
A VERY FRIGHTENED INFORMER
ANSWER ON P.35**



St Mark's churchyard in Winter by Charlie Allen



Chestnut Soup

It's dead easy!

2oz Butter

1 onion

1 stick celery

2 tablespoons plain flour

Chicken or vegetable stock

1 pack peeled and cooked chestnuts

Bay leaf

Nutmeg

Crème fraîche

Medium Sherry (a couple of glugs)

- Melt the butter, sweat the onion and celery add the flour to make a roux.
- Gradually add the stock and the other ingredients apart from the cream.
- Simmer for a 15 minutes approx.
- Remove bay leaf and whizz in blender add cream at the end.



Agne



Castaway of the Month *Jan Case*



Much of my musical interest was acquired at school in Manchester where our second master taught history and music. He was immersed in the classics and Gilbert and Sullivan. He banned the boys from forming a jazz club but ran the school orchestra and produced a Gilbert and Sullivan operetta every other year. He did allow a madrigal society to be established but we rugby lads thought it too effete for our tastes.

I Vow to Thee my Country

On Monday to Saturday the morning assembly was always a bible reading by one of the school prefects who felt very proud in their splendid gowns. This was followed by a hymn and then a prayer. Hymn singing was considered critical and the teaching still resonates. *I Vow to thee my country* is often sung incorrectly. The second verse should start very quietly and then rise to a crescendo at the end. It is spine tingling when sung in this way but often it is not. Please play this as my first record - sung correctly.

Blow the Wind Southerly by Kathleen Ferrier

I was taught the violin at school by Kathleen Ferrier's uncle who was an impoverished violinist in the Manchester Opera House orchestra. His task with me was monumental but he needed my mother's sixpence! Not surprisingly my second choice is the Mancunian contralto, Kathleen Ferrier whose voice was unique. From her CD, *Songs of the British Isles*, I would like *Blow the Winds Southerly* please. Being a capella it is played without instruments and therefore her voice is heard at its best.

When the Night Wind Howls from Ruddigore by Gilbert and Sullivan

I often helped with the stage staff when our annual play or Gilbert and Sullivan production was staged. One of the lesser known operas is Ruddigore. So my third choice is one of the portrait characters, Sir Roderick Murgatroyd, singing to the new squire, Sir Ruthven, *When the Night Wind Howls*. Please may I hear an original production by the D'Oyly Carte company and not, please, the English National Opera whose dire acting and lack of irony detract from their attempts at G&S.

Cont. ...

...Cont.

Black Bottom Stomp The Zenith 6

My twenties involved Saturday nights in Manchester and my tastes had moved to trad jazz of which there was a thriving, pub playing community. The Zenith Six with Marcia McDonnell and Keith Pendlebury on piano were my favourites. I used to drive to a rough pub in Salford in my Lotus 7 to listen to them. There are no recordings with the lovely Marcia, but please play the Zeniths version of which is a Jelly Roll Morton number.

If ye love Me by Thomas Tallis sung by The King's Singers

William Byrd, was influenced by the older Tallis. Accounts describe Byrd as a rascal who enjoyed the pubs and humour of old England. He followed religion but lived a fast life and challenged authority. I like that attitude very much. We must maintain our decency but always question those who think they know better. However, it is Tallis's *If ye love Me* sung by The King's Singers that is my first early music choice.

The Elements by Tom Lehrer .

I don't know how I came across Tom Lehrer but I love his song *The Elements*. He plays the piano while singing the name of every one of the chemical elements to the Gilbert and Sullivan tune of *The Major General's Song* in the *Pirates of Penzance*. What a brain he has but then he read mathematics at Harvard at the age of fifteen!

J.S. Bach: Prelude and Fugue in G minor

Organ music next; I am torn between Buxtehude and JS Bach. I'll go for the former with Prelude and Fugue in G minor played by Frédéric Rival in a Protestant church in Paris. It can be found on YouTube where you can see him playing the pedals in his socks! Please play this at full-wellie; the only way.

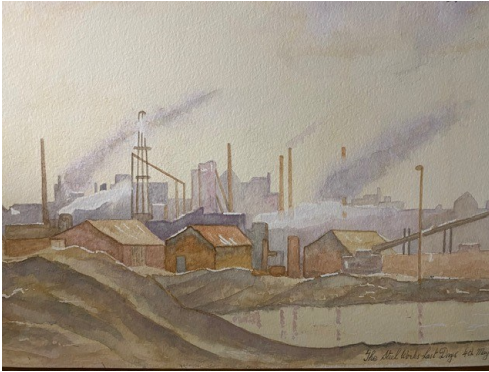
Elgar's Land of Hope and Glory

Finally, please play for me Elgar's *Land of Hope and Glory*. I would prefer this to be our national anthem to replace the present dirge. This would be my choice if only one disc were saved.

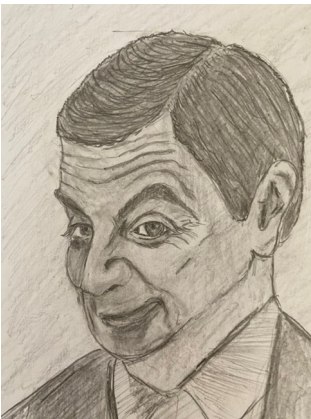
In addition, please, to the Bible and Shakespeare (I love Macbeth) I would like a sketchbook, felt tip pens and 3B pencils although on a small island I will run out of subjects to draw. So, perhaps a violin would be preferable as I might improve given the time. But I doubt it.

Ampfield Art Class Gallery

Julie Trotter's Art Class takes place on
Thursday afternoons
from
2-4pm at the Village Hall



The steel works, last days.
Nick, watercolour.



Mr. Bean
David, pencil.

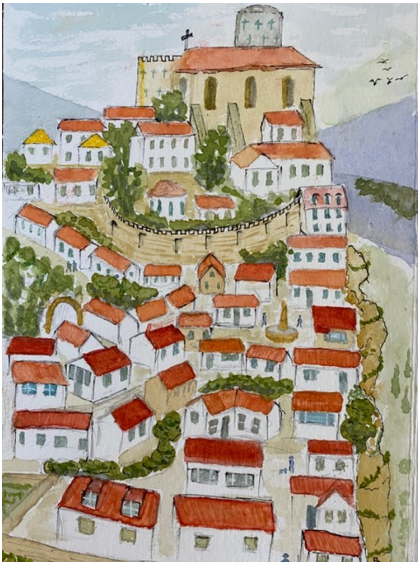


Highland Line
Nick, watercolour.

Ampfield Art Class Gallery



Fruit Salad
Christina, pastel.



Italian Hillside
Pete, watercolour.



Hydrandgeas
Alison, watercolour.

Friends of Chapel Wood

The day of our January working party could not have been better for what we had planned to do. It was dry and had been for the best part of a week. It was cold, and the ground was solid; and, best of all, we had a very good turnout from the Friends. What were we going to do – it was the annual bonfire, of course.

Strangely enough, bonfires do not just happen. They require quite a bit of planning and organisation. First, once the fire gets going, stuff seems to burn very quickly. Much of the material is rhododendron cuttings and, in the



leaves, there is an oil that is very flammable. It is easy to imagine how forest fires can really catch hold. Much of the remaining material we had to burn was the dead box, which had been dug up in previous months. As a result, it is necessary to have most of the bonfire material already cut up and ready to go.

The bonfire pit had already been dug out and the kindling wood carefully laid. The kindling, once laid, closely resembles a construction similar to that found in an old game using blocks of wood, but it does work very well, especially when helped by a couple of firefighters. The driest of the material to be burnt is then carefully stacked around the pile of kindling.

Cont. ...

...Cont.

As the morning drew to a very successful close, we stood around gazing into the dying embers, as you do, munching on mincemeat flapjacks, and chatting quietly. Soon it would be time to rake back the hot remnants of our bonfire and turn on the hosepipe. It is very important everything is extinguished before we quit the site. We do



not want any hot embers reigniting once our backs are turned. It was a good morning, We met a couple of new friends, always a bonus, and we hope they join us again!

The Friends of Chapel Wood is a group of keen volunteers who look after Chapel Wood, the Ampfield community wood that surrounds St. Mark's church. New recruits are always welcomed, so if you fancy the idea of joining some like-minded neighbours for a few hours once a month, just turn up in the St. Mark's car park at 09:45 on the second Saturday of every month.

Graham Roads



FROM THE ARCHIVES

THE AMPFIELD MESSENGER

Vol.15: No.1

JANUARY 1967

Fourpence

Sun. 1st. The Circumcision. Holy Communion 8 am.
7 Lessons & Carols at 6.30 pm.
Bus from Beechwood at 6.15 pm.
Thu. 5th. M.U. Corporate Communion 9.30 am.
Fri. 6th. The Epiphany. Holy Communion 9.30
Sun. 8th. Epiphany I. Holy Communion 8 am.
Family Service 9.45 am.
Sun. 15th. Epiphany 2. Holy Communion 8 am.
Sun. 22nd. Septuagesima. Holy Communion 8 am.
Wed. 25th. Conversion of S. Paul. H.C. 9.30am.
Thu. 26th. M.U. Meeting in the Vicarage 2.45pm.
Sun. 29th. Sexagesima. Holy Communion 8 am.

Mrs Evans and I wish you a Happy New Year.

Carol Services

At the time of writing we have had two most enjoyable Carol Services and this year they were on the same day - Tuesday December 13th.

In the morning Stroud School had their Service when the sermon was given by the Rev. R.C. Riley, Headmaster of Embley Park. The choir was again trained by Miss Shelagh Brown L.R.A.M. who also conducted the singing. Mr. Harold Bristow was at the organ. Many of us were able to hear the choir sing some of the carols at Mattins on the previous Sunday and it was most kind of Mr. Sanger Davies to arrange this for us.

Ampfield School had their Service on the afternoon of Dec. 13th when a good number of parents and friends were present. The carols were accompanied by Recorder groups and this was most effective. Particularly sweet was the singing of the infants with the recorders.

of the M.U. but is for anyone who wishes to come; all are welcome.

On Thursday 26th Jan. the Vicar and Mrs Evan have kindly invited us to have our meeting at the Vicarage, where Miss Thompson is coming to speak on Rhodesia.

J.Faber

Mr & Mrs J.White

In March 1934 Mr and Mrs White opened their Village Stores and nine years later they took over the Post Office. Now they have retired and we wish them every happiness in the years to come. I have enjoyed talking to them about the Ampfield of many years ago - back to the time when Mr White baked his own bread and delivered it by horse and cart. Mrs White was brought to the village by her parents when she was two years old and she has a fund of interesting stories about the Church and the school from the time just before World War I. Her father was a very keen Church worker and was a Churchwarden for many years. We are glad Mr and Mrs White are not severing their connection with the village, they have served so well, and that the business is being carried on by their son and daughter-in-law Michael and Jane White to whom we send our best wishes.

Holy Baptism

On Nov. 27th. Peter Eric, son of Brian & Juliet Humphrey, Flat 2, Jermyns House

On Dec. 4th. Karen, daughter of Michael & Susan Sherin, 8 Wheelhouse Park, Chandlers Ford.



Church Screens

Part One

By Liz Hallett

A very common feature of parish churches in medieval times was a screen, usually wooden but occasionally stone, which separated the nave from the chancel. The nave was often used for secular purposes, being the only place in most villages where large groups could meet together. The screen also marked the divide between the nave, where responsibility for the upkeep was with the parish, and the chancel, where the upkeep was often by the rector. In Jacobean times so-called parclose screens were also built, to separate chancels from chancel aisles. The screens would be ornately carved and painted in rich colours, some retaining their medieval paint to this day.

Two areas of England where an abundance of screens still remain are Devon and East Anglia. The collections of saints depicted on these screens formed a very helpful teaching aid for medieval church-goers - and to us today too, since many of us would probably have to do some research to learn the stories of saints such as Lucia,

Zita and Sidwell, all of whom are depicted at Plymtree, Devon.



This wonderful screen at Plymtree, Devon, still retains much of its medieval paint and gilding, and is a delightful example. The 34 panels along the bottom of the screen each depict a saint, recognisable by his or her special symbols-one of which is yet another St Roche

painting.

...Cont.

Screens are less common in Hampshire, though some, like Bighton's green and gilded screen by Sir Ninian Comper (1864-1960), have been added since they once again became popular in Victorian times. You can see what remains of Romsey's medieval chancel screen because a 19th century vicar used a row of carved heads from the old disused 14th century one to form part of a new Victorian chancel screen, which he then erected across the chancel step. In the 1920s this was moved to allow a clear view of the full length of the church, and it now separates the North Transept from the Choir in the Crossing. At the same time a complementary screen was made for the south side. Interesting, but not as special as some of the wonderful medieval screens to be found elsewhere.

St Mary's, Attleborough, has the most complete screen in Norfolk. It dates from the late 15th century and has two rows of saints. In the 1600s, the shields of the then 24 dioceses in England were added.



Two sections of the famous late 15th century screen at Ranworth, Norfolk. Right: St Michael slaying the 7-headed dragon of the Book of Revelation, and above:

the south parclose screen, which also forms a reredos for a Lady Chapel, showing Mary Salome, St Mary the Virgin, Mary Cleophas and St Margaret.



Liz Hallett

Thought for the Month

Hello, how are you? This is our usual greeting whenever we meet up with someone we know. This is generally followed up by some reference about the weather. We all seem strangely comforted by this approach. Dogs get excited by each other and do a lot of sniffing, whilst their owners discuss their own illnesses and often run down others who are not there. Maybe doing what the dogs do may seem a good alternative option for us. I cannot get the comical image out of my mind of us all sniffing each other and getting excited. Maybe that is not such a good option. The fact remains that we are all creatures of habit and have been using the weather and human ailments as a source of communication for an awful long time. I wonder if the Victorians and even the Georgians used similar greetings. ‘Top of the morning to you’ springs to mind. In all honesty, although monotonous, our form of greeting each other is probably as good as any alternative. If it makes us feel comfortable, why not stick with it.

Ron





How does Moses make his coffee?
Hebrews it.

How long did Cain dislike his brother?
As long as he was Abel.

Why didn't Noah go fishing?
He only had two worms.

How do you know that atoms are Catholic?
They have Mass.

What do you call a sleepwalking nun?
A roamin' Catholic.

Why did the sponge go to church?
It was hole-y.

What did God do to cure Moses' headache?
He gave him two tablets.

Why couldn't they play cards on the Ark?
Noah was always standing on the deck.

What did Adam say the day before Christmas?
It's Christmas, Eve!

What type of lights did Noah have on the Ark?
Floodlights.



A Prayer for Lent

Holy God,
our lives are laid open before you:
rescue us from the chaos of sin
and through the death of your Son
bring us healing and make us whole
in Jesus Christ our Lord
Amen.



Answers to Ron & Stella's Quiz Night

1. Empire State Building
2. Charlie Dimmock
3. The star-spangled banner.
4. Artichokes
5. Three
6. Jupiter
7. Giraffe
8. The Lion King
9. New Delhi
10. Death Valley, California

ANSWER TO 'IDENTIFY THIS PLANT'

QUAKING GRASS

A MEMBER OF THE BRIZA TYPE, SOME ARE PERENNIALS WHILE OTHERS ARE ANNUALS. THE LATTER NEED TO BE LEFT STANDING TO MATURE AND SHED THEIR SEEDS.

ANON.



Rotas for St. Mark's in February

Date	1 st Reading	2 nd Reading	Intercessions	Sides	Coffee	Music
4th Feb 9.30	Tidy Church					
11th Feb 9.30	2 Kings 2.1 - 12 Heather C	2 Corinthians 4.3 - 6 Mark B	Rob	TBA	TBA	TBA
18th Feb 9.30	Genesis 9.8 - 17 Jennie	1 Peter 3.18 - 22	Jean	TBA	TBA	TBA
25th Feb 9.30	Genesis 17. 1 - 7 15,16 Robyn	Romans 4 13 - 25 Doreen	Sally	TBA	TBA	TBA

Flowers—Chris (until Lent)



Simplify your life with our top-rated service

UW is the only home services provider to bundle everything onto one, simple, monthly bill. That includes gas, electricity, broadband, landline, mobile and insurance.

And because we're Which? Utilities Brand of the Year 2020, you know you'll be in good hands.



My name is Natalie and I help people save money on their boring old bills - for FREE. You may not have heard of Utility Warehouse before - but we've actually been around for over 24 years! We are a multi award winning British company with award winning customer service and a UK call centre.

Find out more...Natalie Day
natalie@dropintheocean.co.uk 07887602483

Here for all of your grave care needs



The Graveside Sisters

Head stone cleaning, Letter re-painting
Weeding, Tidying and General care.

Tel 07810111592 or 07810810476

Email... Emma@thegravesidesisters.com

Visit.. www.thegravesidesisters.com

Facebook.. www.facebook.com/TheGraveSideSisters

CONTRIBUTIONS and CONTENT

DONATIONS may be payable by cheque, please post to:

Attn. Adrienne, All Saints Church, Church Close, North Baddesley
SO52 9EQ made out to **Ampfield PCC** and on the reverse
please specify: 'THE MESSENGER MAGAZINE'.

Or paid directly:

Sort code: 30-92-94 Account No: 01254722

Account Name: St Marks Church PCC / Reference: Magazine

ADVERTISING

Please send to: **Kate McCallum** at

Kathleen.mccallum@icloud.com

Application for designs and rates for both commercial and charity advertisements will be agreed before submitting copy/drafts for inclusion as JPEGs in high resolution not PDFs or for any graphic design work that you may require to be published. The quality, copyright and content are the sole and legal responsibility of the advertiser.

The views expressed by contributors are not necessarily those of Editors or PCCs nor will they accept any liability for such. They are not responsible for any of the views, statements or opinions expressed in the contributions and any reliance placed on them by the reader is at the readers sole risk. Copyright is the legal responsibility of the contributor and not that of the editors or PCC with regard to any content.

Advertisements are not endorsed or guaranteed on any product or services referred to in, or the content of, such contributions. Every care is taken on content, but possibly there could be cause for misunderstanding that was not intended.

AMPFIELD PARISH COUNCIL

Kate Orange - Clerk to Council

2 The Square

Braishfield Road, Braishfield

Romsey SO51 0PQ

Tel: 07922 118840

email: clerk@ampfield.org.uk

NIGEL GUILDER

FAMILY OWNED FUNERAL DIRECTORS

Nigel Guilder Dip FDMBIFD

SERVICE

02380 262 555

www.nigelguilder.co.uk

Pre-paid Funeral Plans Available



Nathan House, 27 Hursley Road,
Chandler's Ford, SO53 2FS



Blackwell & Moody Ltd.

**Monumental Masons and
Restoration Specialists**

Jeffrey Higgins

Magdalen Masonry Works,
Alresford Road, Winchester,
Hampshire. SO21 1HE

Tel: 01962 852 476

Fax: 01962 850 865

Email: blackwellandmoody@gmail.com



“Pilates is complete co-ordination of body, mind and spirit”

Joseph H. Pilates

At
Amplefield
Village
Hall

**Contact us, book it,
try it, you'll love it!**

Register
now for
2024
classes

☎ 07928 067 190

✉ hello@pilateswithaplomb.com

pilateswithaplomb.com

Dave Butler Fencing & Gates

For all your fencing requirements,
Decking solutions also provided

Tel: 01794 522212

Mob: 07747 624967

email: dave@fencing-gates.co.uk

AMPFIELD VILLAGE HALL

Bookings taken for private parties and receptions. Clubs and other organisations are welcome.
Good parking.

**For bookings ring
Martin Hatley**

A.H. Cheater Ltd
Funeral Directors

Over 100 years of service to the local community

The Family Owned Funeral Directors
The Peace family have proudly served Romsey and the surrounding area for three generations.

Experienced and Flexible
Honesty, integrity and transparency are at the heart of our beliefs. We understand every funeral is unique.

Modern Professional Facilities
Our premises have complete facilities on site and our dedicated team are available to support you 24 hours a day.

www.ahcheater.co.uk

ROMSEY
01794 513293

NORTH BADDESLEY
02082 358860

AVAILABLE 24 HOURS

Computer Problems?	
	PC, Mac, iPads, Screens Windows XP 10 & add Menus Virus Fixes & Tune up Data recovery, Printing Broadband & Networking
Independent Impartial Advice Home Visits	
Laptops, Macs & Phones	PC's, viruses, Home setups
Call Colin: 01962 713890 07727 481220	Call Gerry: 01962 712674 07900 845814
10% off labour with Parish Magazine over	

<p>AMPFIELD to ROMSEY DIAL A RIDE</p> <p>A transport service for disabled or elderly people who cannot use ordinary buses. We provide a door to door service using specially adapted vehicles, for shopping trips and other individual transport needs.</p> <p>Tel: 01264 356808 www.tvcs.org.uk</p>
--

* * * * *		* * * * *
* * * * *		* * * * *
	Good Roots Garden Services	
* * * * *		* * * * *
* * * * *	I have 20 years experience in horticulture and specialise in garden maintenance, small landscaping & repair works' I can either work with you to improve your outside space or offer a 'spruce up' service. Please get in touch so I can come and chat with you about what your garden needs with a free, no-obligation visit.	* * * * *
* * * * *		* * * * *
* * * * *		* * * * *



Talk to us

If things are getting to you. Any time you like, in your own way - about whatever is on your mind.

- Free to phone 116 123
- Email: jo@samaritans.org
- Visit us: 13 Upper High Street, Winchester SO23 8UT



JO HOOPER
HONS) RNMH REG.
MBACP

Counsellor, Psychotherapist, Coach

Currently working online

counselling@jlhooper.co.uk

<https://www.paranimo.co.uk/therapists/jo-hooper/profile>

(click link for my video)

023 8097 2243

WORKING WITH YOUR EMOTIONS, THOUGHTS
AND FEELINGS

CONTACT ME FOR AN INFORMAL CHAT TODAY

STROUD SCHOOL
King Edward VI Preparatory

kes.school

IN AETERNUM INTREPIDUS