

Sturton by Stow and Stow Neighbourhood Plan

2019 – 2036

Neighbourhood Profile

Appendix 2: Supplementary Photographs and Views



Contents

<i>Character Area 1 (Sturton by Stow Pre-1945)</i>	4
High Street.....	5
Marton Road.....	9
Saxilby Road	11
Tillbridge Lane	12
Village Core Area	14
<i>Character Area 2 (Sturton by Stow Post -1945)</i>	16
Ashfield	17
Beeches	20
The Close	21
High Street.....	24
Larners' Fields.....	25
Manor Farm.....	27
Marton Road.....	28
Old Rectory	29
Rectory Gardens	31
Stretton Close	36
<i>Character Area 3 (Stow Village)</i>	37
Important Views of Character Area 3	37
Supplementary Photographs of Character Area 3.....	45

Character Area 4 (Rural Stow)..... 61
 Supplementary Photographs of Character Area 4..... 64
Character Area 5 (Rural Sturton by Stow and Stow Park)93
 Supplementary Photographs of Character Area 593

Character Area 1 (Sturton by Stow Pre-1945)

High Street

1. Street scene from junction with Marton Road
2. 19C terrace including Tillbridge Tastery
3. St Hugh's Church - Grade II listed
4. Early 18C detached house
5. 18C Manor house
6. The old shoemaker shop
7. The old Quaker meeting house - Grade II listed
8. 1911 detached house with mid-point cogging
9. The old post office
10. 18C barn
11. Entrance to Bradshaw's depot
12. Stow Road street scene
13. Open countryside to the West of the village
14. Green space with seating
15. Green space pasture field

Marton Road

1. 18C row of former shops inc blacksmith
2. Former business premises. 18C house with extension
3. Street scene showing mature trees
4. 19C farmhouse
5. 19C farmhouses
6. 1939 red brick semi-detached house
7. Non-designated heritage asset ridge and furrow field North
8. Non-designated heritage asset ridge and furrow field South

Saxilby Road

1. Street scene Saxilby Road
2. Former blacksmith with old Red Lion pub sign frame
3. Newly constructed house with period characteristics

Tillbridge Road

1. Tillbridge road street scene
2. 18C terrace with Malthouse
3. 19C terrace
4. The old school
5. 19C barn
6. 19C former chapel

Village core area

1. Street scene core area
2. The village shop
3. The Plough pub
4. 18C semi-detached cottages
5. The village green
6. Example of garden wall coping pattern

High Street



1. Street scene from junction with Marton Road



2. 19C terrace including Tillbridge Tastery



3. St Hugh's Church - Grade II listed



4. Early 18C detached house



5. 18C Manor house



6. The old shoemaker shop



7. The old Quaker meeting house - Grade II listed



8. 1911 detached house with mid-point cogging



9. The old post office



10. 18C barn



11. Entrance to Bradshaw's depot



12. Stow Road street scene



13. Open countryside to the West of the village



14. Green space with seating



15. Green space pasture field

Marton Road



18C row of former shops inc blacksmith



Former business premises. 18C house with extension



Street scene showing mature trees



19C farmhouse



19C farmhouse



1939 red brick semi-detached house



Non-designated heritage asset ridge and furrow field North



Non-designated heritage asset ridge and furrow field South

Saxilby Road



1. Street scene Saxilby Road



2. Former blacksmith with old Red Lion pub sign frame



3. Newly constructed house with period characteristics

Tillbridge Lane



1. Tillbridge road street scene



2. 18C terrace with Malthouse



3. 19C terrace



4. The old school



5. 19C barn



6. 19C former chapel

Village Core Area



1. Street scene core area



2. The village shop



3. The Plough pub



4. 18C semi-detached cottages



5. The village green



6. Example of garden wall coping pattern

Character Area 2 (Sturton by Stow Post -1945)

Ashfield

Beeches

The Close

Glebe

High Street

Larners' Fields

Manor Farm

Marton Road

Old Rectory

Rectory Gardens

Stretton Close

Ashfield







Beeches



The Close







High Street



Larners' Fields





Manor Farm



Marton Road



Old Rectory





Rectory Gardens











Stretton Close



Character Area 3 (Stow Village)

Important Views of Character Area 3

- IV1 Stow Minster and Thatched Cottage from Ingham Road end of footpath to St Mary's Crescent
- IV4.1 Stow Minster and Cross Keys pub from Stow Park Road
- IV4.2 Village Green from Stow Park Road, ie looking northwards.
- IV5.1 View east from corner of Stow Park Road by cemetery
- IV5.2 View to west from south-west corner of Manor Farm homestead. Photo taken from just next to the car park for the rented properties
- IV5.3 View of landscape beyond cemetery gate
- IV5.4 View to west from bend opposite cemetery.jpg
- IV6.1 View to NE from just north of the bend where School Lane meets the B1241
- IV6.2 Pasture ie looking NW from the north end of School Lane
- IV6.3 Pasture by B1241 opposite 5 Church Lodge.jpg
- IV6.4 Stow Minster from Sturton Road, looking north.
- IV6.5 Stow Minster from the bend in B1241 round Church Lodge
- IV6.6 View from SE of Stow Minster and grave yard taken from B1241
- IV6.7 View to SW from 30mph sign on Sturton Road
- IV9.1 View north as footpath FC/3 (Ingham Road to Sturton) emerges from copse
- IV9.2 View east as footpath FC/3 (Ingham Road to Sturton) emerges from copse
- IV9.3 View south as footpath FC/3 (Ingham Road to Sturton) emerges from copse
- IV10 View of Stow from western branch of footpath FC/2 to Sturton from Stow Park Road



IV1 Stow Minster and Thatched Cottage



IV4.1 Stow Minster and Cross Keys pub from Stow Park Road



IV4.2 Village Green



IV5.1 View east from corner by cemetery



IV5.2 View to west from corner of Manor Farm



IV5.3 View of landscape beyond cemetery gate



IV5.4 View to west from bend opposite cemetery



IV6.1 View NE from junction of School Lane with B1241



IV6.2 Pasture from north end of School Lane



IV6.3 Pasture by B1241 opposite Church Lodge



IV6.4 Stow Minster from Sturton Road



IV6.5 Stow Minster from the bend in B1241 round Church Lodge



IV6.6 View from SE of Stow Minster and grave yard taken from B1241



IV6.7 View SW from by 30MPH sign on Sturton Road



IV9.1, 9.2 and 9.3 Views south, east and north respectively as path emerges from copse onto field



IV10 View of Stow from western branch of footpath to Sturton from Stow Park Road

Supplementary Photographs of Character Area 3



1.1 St Mary's Crescent from South Drive



1.2 St Mary's Crescent looking east



1.3 St Mary's crescent and start of footpath to Ingham Road



1.4 Footpath from St Mary's Crescent to Ingham Road



1.5 Footpath to St Mary's Crescent from Ingham Road



1.6 Damaged verge on St Mary's Crescent



2.1 School Lane from south end



2.2 The Old School on School Lane



2.3 Rotting street sign on School Lane



3.1 Church Road from south



3.2 Belle Vue Farm on Church Road



3.3 Barn conversions on Church Road



3.4 Sewage pumping station on Church Road



4.1 Stow Minster stands elevated above road



4.2 Cross Keys pub from west door of Stow Minster



4.4 'Village Green' communal area



4.5 'Village Green' from west



4.6 Partially preserved barn opposite west door to Stow Minster



4.7 Allotments by village green



4.8 The Whipping Post on the village green



4.9 Blind corner by pub



5.1 Moat round Manor Farm



5.2 Play ground opposite pub



5.3 Stow Cemetery



5.4 Bench in cemetery



5.5 View past pub to Williams Garage



5.6 Stow Park Road no 1



5.7 Cross Keys pub



5.8 View of Stow from corner by Cemetery



6.1 View to west from corner B1241 and School Lane



6.2 Bend and invalid crossing made dangerous by hedge



6.3 SE corner of cross roads



6.4 Wide areas of green in centre of Stow, but ugly signage



6.5 Village sign and areas of green in centre of Stow



6.6 Listed 6 Sturton Road



6.7 Listed Converted Wesleyan Chapel



7.1 Ingham Road from corner with South Drive



7.2 Blocked ditch opposite telephone exchange on Ingham Road



7.5 Stow Minster from junction with South Drive



7.6 Ingham Road no 9



7.7 Thatched Cottage on Ingham Road



7.8 Redevelopment of Old Post Office



7.9 Entrance to new development to north of Ingham Road



7.10 Phone exchange



7.11 Entrance to overgrown plot off Ingham Road



7.12 End of pavement on Ingham Road - dangerous thereafter



8.1 South Drive looking north



8.3 South Drive verge damaged by lorries trying to pass parked cars



8.4 South Drive facing south from corner with St Mary's Crescent



8.5 Bench on corner South Drive and Ingham Road



8.6 Untidy garden on South Drive



8.7 View of Stow Minster from South Drive



8.8 South Drive facing north



9.1 Footpath from Ingham Road by 30mph sign to Sturton



9.2 Footpath from Ingham Road passing through copse



9.3 Gate and bridge entering copse from north



9.4 Bridge at south end of fir tree copse



9.5 Clogged drain crossing footpath on north side of copse



10.1 Start of footpath from Stow Park Road south towards Sturton



10.2 Footpath south from Stow Park Road - junction of branches



10.3 View of Stow from western branch of footpath off Stow Park Road

Supplementary Photographs of Character Area 4

1. Ingham Road to Coates

- 1.1 View across the fields on leaving the village on Ingham Road
- 1.2 Approaching Stow from Ingham Road by Barley House
- 1.3 A 19th Century ex farmstead
- 1.4 View south from Ingham Road with cathedral in the distance
- 1.5 Green Lane looking north from Ingham Road between Copperfields, a 19th Century ex farmstead) and the flat tops
- 1.6 Green lane towards flat tops
- 1.7 A view of the flat tops from Green Lane
- 1.8 Green Lane towards Ingham Road
- 1.9 Green Lane from Ingham Road
- 1.10 Green Lane off Ingham Road
- 1.11 View from Green Lane
- 1.12 Across the fields from Green Lane
- 1.13 View from Green Lane across the fields
- 1.14 View from Green Lane towards Stow
- 1.15 Wild flowers along Green Lane
- 1.16 Across the fields towards the Ridge
- 1.17 Approach to Stow on Ingham Road as you approach the village sign
- 1.18 Squire's Bridge looking over the Till
- 1.19 River Till looking northwards from Ingham Road
- 1.20 River Till looking south
- 1.21 River Till from Ingham Road
- 1.22 Cattle grazing by the Till

- 1.23 Public footpath from Squire's Bridge to Coates
- 1.24 Towards the village from the River Till
- 1.25 Across the fields with the Cathedral in the distance

2. Coates

- 2.1 Bungalows at Coates
- 2.2 Coates Hall
- 2.3 Coates Hall
- 2.4 Coates Hall from St Edith's
- 2.5 Coates Hall
- 2.6 St Edith's
- 2.7 St Edith's looking towards farm buildings
- 2.8 St Edith's and moat to the foreground
- 2.9 St Edith's as you approach
- 2.10 The moat is part of the scheduled monument
- 2.11 Graveyard, St Edith's
- 2.12 The Maltby Family Monument
- 2.13 Groom's cottages, Coates
- 2.14 Farm cottages at Coates
- 2.15 Coates medieval village site and Grange Farm
- 2.16 Coates medieval village site
- 2.17 Coates Hall in the background
- 2.18 Across to Coates from Ingham Road
- 2.19 Lane into Coates
- 2.20 Across the fields from Coates
- 2.21 View from by St Edith's to Grange Farm

3. Coates to Normanby and Normanby

- 3.1 Lane at Coates
- 3.2 Till drain looking north
- 3.3 Drain on Coates to Normanby back road
- 3.4 Drain from Coates - Normanby lane
- 3.5 Green Lane from the Till
- 3.6 Green Lane near Till
- 3.7 By the bridge over the Till at the end of Green Lane
- 3.8 The Till at the end of Green Lane
- 3.9 The Till from the Coates to Normanby lane
- 3.10 Lane from Coates to Normanby near the Till
- 3.11 The lane between Normanby and Coates looking in the direction of Coates
- 3.12 Burnt out barn on lane near Normanby
- 3.13 The flat tops, Normanby
- 3.14 Flat-tops at Normanby from the north
- 3.15 East Farm from near the flat-tops
- 3.16 East and West Farms from the flat-tops
- 3.17 West Farm, Normanby
- 3.18 18th Century granary with lean-to 'cart' shed, West Farm
- 3.19 Farm buildings including 'meal house' (grinding corn for the cattle) to the west of West Farm
- 3.20 Lane and farm buildings (higher roofed building was the dairy) to side of West Farm
- 3.21 West Farm, cottages and East Farm
- 3.22 Rear of cottages, Normanby and area of deserted medieval village

- 3.23 Entering Normanby from the north
- 3.24 Entering Normanby from Willingham on B1241
- 3.25 Entering Normanby (East Farm on the left) from the north on B1241
- 3.26 Leaving Normanby heading north on B1241
- 3.27 View to Trent valley from Normanby
- 3.28 Looking to Stow Minster from Normanby
- 3.29 View from Normanby looking down to Stow Minster
- 3.30 Looking towards Normanby from lane
- 3.31 Flat tops coming along the lane from Coates
- 3.32 North from Coates/Normanby lane
- 3.33 Stow Minster from the Coates/Normanby lane
- 3.34 Stow Village from the north on the B1241

4. Northern end of Church Road

- 4.1 Ponds west of Church Road
- 4.2 Area by ponds on west side of Church Road
- 4.3 Pond west of Church Road

5. Stow Park Road and north of Tillbridge Lane

- 5.1 Entrance to the cemetery.
- 5.2 Stow Cemetery
- 5.3 View from cemetery towards Stow Minster
- 5.4 Stow Park Road near Manor Farm
- 5.5 Towards the Trent from Manor Farm

- 5.6 Entering Stow from the west
- 5.7 Leaving Stow by the cemetery
- 5.8 View to Stow Minster from the bridleway off Stow Park Road
- 5.9 Looking south along bridleway towards Stow Park Road
- 5.10 Looking west from bridleway along farm track
- 5.11 Looking west to the power station from the bridleway off Stow Park Road
- 5.12 View from Stow Park Road across the fields
- 5.13 North from Stow Park Road
- 5.14 North from Stow Park Road (solar farm in the background)
- 5.15 Vistas to the south of Stow Park Road
- 5.16 Highfield Farm from the west
- 5.17 Electricity sub station, Stow Park Road
- 5.18 Gallows Dale, 18th Century farmhouse

6. Thorpe Lane/Fleets Road/Fleets Lane

- 6.1 Fleets Lane
- 6.2 Fleets Lane 2
- 6.3 Fleets Lane 3
- 6.4 Parish Field
- 6.5 The Parish Field
- 6.6 View from Fleets Lane
- 6.7 Bench at corner of Fleets Lane and Thorpe Lane

- 6.8 The Cathedral from the footpath off Fleets Lane
- 6.9 View to the village from the footpath off Fleets Lane
- 6.10 Cottages on Fleets Lane

7. From Sturton

- 7.1 Entering Stow by Capps Island on B1241
- 7.2 Entering Stow from Sturton by Mere House
- 7.3 View towards Sturton by Mere House



1.1 View across the fields on leaving the village on Ingham Road



1.2 Approaching Stow from Ingham Road by Barley House



1.3 A 19th century ex farmstead



1.4 View south from Ingham Road with Cathedral in the distance



1.5 Green lane looking north from Ingham Road and between Copperfields (an 19th Century ex farmstead) and flat tops



1.6 Green Lane towards flat tops



1.7 A view of the flat tops from Green Lane



1.8 Green Lane towards Ingham Road



1.9 Green Lane from Ingham Road



1.10 Green Lane off Ingham Road



1.11 View from Green Lane



1.12 Across the fields from Green Lane



1.13a Beginning of public footpath from Squires's bridge to Coates



1.13b View from Green Lane across the fields



1.14 View from Green Lane towards Stow



1.15 Wild flowers along Green Lane



1.16 Across the fields towards the Ridge



1.17 Approach to Stow on Ingham Road as you approach the village sign



1.18 Squire's Bridge looking over the Till



1.19 River Till looking northwards from Ingham Road



1.20 River Till looking south



1.21 River Till from Ingham Road



1.22 Cattle grazing by the Till



1.23 Public footpath from Squire's Bridge to Coates



1.24 Towards the village from the River Till



1.25 Across the fields with the Cathedral in the distance



2.1 Bungalows at Coates



2.2 Coates Hall



2.3 Coates Hall



2.4 Coates Hall from St Edith's



2.5 Coates Hall



2.6 St Edith's



2.7 St Edith's looking towards farm buildings



2.8 St Edith's with medieval moat to foreground



2.9 St Edith's as you approach



2.10 The moat is part of the scheduled monument



2.11 Graveyard St Edith's



2.12 The Maltby Family Monument



2.13 Groom's Cottages, Coates



2.14 Farm Cottages at Coates



2.15 Coates medieval village site and Grange Farm



2.16 Coates medieval village site



2.17 Coates Hall in the background



2.18 Across to Coates from Ingham Road



2.19 Lane into Coates



2.20 Across the fields from Coates



2.21 View from by St Edith's to Grange Farm



3.1 Lane at Coates



3.2 Till drain looking north



3.3 Drain on Coates to Normanby back road



3.4 Drain from Coates - Normanby lane



3.5 Green Lane from the Till



3.6 Green Lane near Till



3.7 By the bridge over the Till at the end of Green Lane



3.8 The Till at the end of Green Lane



3.9 The Till from the Coates - Normanby lane



3.10 Lane from Coates to Normanby near the Till



3.11 The Lane between Normanby and Coates looking in the direction of Coates



3.12 Burnt out barn on lane near Normanby



3.13 The flat tops, Normanby



3.14 Flat tops at Normanby from the north



3.15 East Farm from near the flat tops



3.16 East and West Farms from the flat-tops



13.17 West Farm, Normanby



3.18 18th Century Granary with lean-to 'cart' shed, West Farm



3.19 Farm buildings including 'meal house' (grinding corn for the cattle) to west of West Farm



3.20 Lane and Farm buildings (higher roofed building was the dairy) to side of West Farm



3.21 West Farm, cottages and East Farm



3.22 Rear of cottages Normanby and area of deserted medieval village



3.23 Entering Normanby from the north



3.24 Entering Normanby from Willingham on B1241



3.25 Entering Normanby (East Farm on the left) from the north on B1241



3.26 Leaving Normanby heading north on B1241



3.27 View to Trent valley from Normanby



3.28 Looking to Stow Minster from Normanby



3.29 View from Normanby looking down to Stow Minster



3.30 Looking towards Normanby from Coates/Normanby lane



3.31 Flat tops coming along lane from Coates



3.32 North from Coates/Normanby lane



3.33 Stow Minster from the Coates/Normanby Lane



3.34 Stow Village from the north on the B1241



4.1 Ponds west of Church Road



4.2 Area by ponds on west side of Church Road



4.3 Pond west of Church Street



5.1 Entrance to the cemetery



5.2 Stow Cemetery



5.3 View from Cemetery towards Stow Minster



5.4 Stow Park Road near Manor Farm



5.5 Towards the Trent from Manor Farm



5.6 Entering Stow from west



5.7 Leaving Stow by the cemetery



5.8 View to Stow Minster from the bridleway off Stow Park Road



5.9 Looking south along bridleway towards Stow Park Road



5.10 Looking west from bridleway along farm track



5.11 Looking west to the power station from the bridleway off Stow Park Road



5.12 View from Stow Park Road across the fields



5.13 North from Stow Park Road



5.14 North from Stow Park Road (solar farm in background)



5.15 Vistas to the south of Stow Park Road



5.16 Highfield Farm from the west



5.17 The electricity sub-station on Stow Park Road



5.18 Gallows Dale farmhouse



6.1 Fleets Lane



6.2 Fleets Lane 2



6.3 Fleets Lane 3



6.4 Parish Field



6.5 The Parish Field



6.6 View from Fleets Lane



6.7 Bench at corner of Fleets Lane and Thorpe Lane



6.8 The Cathedral from footpath off Fleets Lane



6.9 View to village from footpath off Fleets Lane



6.10 Cottages on Fleets Lane



7.1 Entering Stow by Capps Island on B1241



7.2 Entering Stow from Sturton by Mere House



7.3 View towards Sturton by Mere House

Character Area 5 (Rural Sturton by Stow and Stow Park)

Supplementary Photographs of Character Area 5



Attractive tree lined west entrance to Sturton by Stow



CF3 Seat on Thorpe Lane



Characteristic narrow lane with wide verges and hedges



Cowdale lane to west of Bransby with wide verges and hedges and standards



IV1 Home Farm Bransby



IV3 View towards Lincoln Edge and cathedral



IV5 View west towards Trent Industrial landscape



L2 Subscription Mill



L7 West Lawn medieval deer park boundary



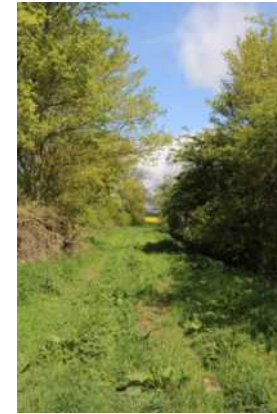
Listed building Old Barn Bransby



Oak in L7 West Lawn



Road verge with remnant ancient woodland indicators



Top of Bonnywells Lane



View south on Thorpe Lane from CF3



Walkabout briefing