



Chair's Welcome

Welcome to the Spring Edition of Nesses News, covering the parish council area of Great Ness & Little Ness. I'm sure you're all, like myself, looking forward to some better weather!

We continue to chase problems with potholes, flooding on roads, and getting the lights sorted on the Felton Butler roundabout. Also, the track by Nesscliffe playing field will be completed as soon as the weather allows, which will be great!!

Following consultation, I am pleased to announce that our parish council Vision, Business Plan and Action Plan will be published in early April. We are committed to planning for the community's needs, both now and in the future. If anyone has any ideas on how to further improve our parishes, please get in touch; your ideas will further enrich the Business Plan.

Wishing everyone a Happy Easter!

Cllr. Alison Mullis, Chair of Great Ness & Little Ness Parish Council

Nesscliffe Hill and Park

Update from Shropshire Council's Country Parks Team

Nesscliffe Hill was planted up in the 20th Century by the former owners, the Bradford Estate. The intention being as a cash crop, to bring money in by planting non-native softwood, a move which would never be allowed today under British law due to the sensitive nature of the site.

In 2017, a serious storm brought down many of these trees near Oliver's Point due to it's exposed location. As a consequence, trees behind began to fall in a domino effect causing much damage to the archaeology of the Scheduled Ancient Monument. We were left with no choice but to remove the remaining trees in the western half of the hillfort. Consequently, this work acted as a catalyst to initiate the accepted Woodland Management Plan (2013). The aim of the plan is to selectively remove the non-native softwood as it becomes ready for harvesting and to restore the site to its original ancient oak woodland and heathland mosaic, much richer for wildlife.

If we do nothing, the trees would start to blow over, this would be both a health and safety issue, would cost a fortune to clear and would lose valuable income for the site as was originally intended.

The clear felling this winter 2023/24, also part of the woodland management plan of 2013, was necessary to protect the scheduled ancient monument and had the blessing of Historic England and our own archaeological service. The intention here, for the whole of the hillfort, is to restore to heathland and open up views out of the site across the Shropshire landscape. To reinvest the money raised into improving the visitor experience and in creating a rare habitat at the global level.

We anticipate the thinning operation to take over 10 years with quite a few unusual non-native trees planted by the Bradford Estate, to be retained. This will create quite a unique site, ancient oak woodland/ heathland mosaic within an almost arboretum scenario.

We are conscious that it may appear counter intuitive to be removing trees during a climate crisis, we therefore are working to replant on other Shropshire Council land and to support private landowners in planting trees as we have done for decades as part of the Free Tree Scheme, later to be called the Community Tree Scheme. Right tree, right place.

Land for Compensatory Tree Planting

Shropshire Council are looking for about 1.5 ha of land locally to plant a coppice style woodland or woodlands. This is as compensatory planting for the works planned at the hill. Shropshire Council will provide the trees —if you have land that may be suitable please contact:

Martin Sutton County Arboriculturist, martin.sutton@shropshire.gov.uk, 01743 254634 / 07811 987676.

Nesscliffe Youth Club

Nesscliffe Youth Club has been very energetic this term. We have played capture the flag, infection tag, running tournament, football and dodgeball. The young people have shown their creativity with encaustic art and badgemaking. We have had karaoke. The young people have looked at information around drugs and have helped the SYA with research around what is important in health for young people. For the rest of the term we have a visit from musicians for drumming and songwriting workshops, human air hockey, cling film challenge, pyrography and more. Each week we have pool, table tennis and the Wii. We have a tuckshop but drink and food is also available for free. Subs are £1. Ages 9 years and above. If your child would like to attend please fill in the form via this link: <https://forms.office.com/e/wsLOFhiACT>



Cllr. Ed Potter— Shropshire Council Ward Member for Loton Division

2024 brings fresh challenges, with financial pressures around social care amounting to in excess of 80% of Shropshire Council's Budget. Roughly speaking for every £5 council tax paid, £4 is spent on social care, of the remaining £1, waste uses up 50p and everything else is funded by the remaining 50p. There will be some tough decisions to make this year. These include: possible charging for green waste (this will be an opt in scheme as most local authorities charge for the collection of green waste); the reduction or cessation of non-statutory services. Those services which the government mandate local authorities to fulfil will be continuing. Highways and flooding are the top issues at present. This is replicated across the county and the resources are stretched. It's important to keep reporting issues as they arise, I will continue to push to get some of the more tricky spots addressed. It has been great to see the support for the Afghan Resettlement Scheme operating out of Nesscliffe Training Camp. I appreciate there have been some frustrations locally about communication but things seem to have gone well and I know those involved have been extremely grateful for the donations they have received. As ever, if there are any issues which you think I might be able to help with, please do not hesitate to contact me.

Edward Potter, 07779117802

Shropshire Councilor Loton Division (including Communities of Alberbury with Cardeston, Montford, Great and Little Ness, Westbury and Yockleton)

If you would like more information about Shropshire Council services, please [visit our website](#) or [sign up for email updates](#)

Great Ness & Little Ness Parish Council Meetings & Annual Parish Meeting

Meetings start at 7.30pm and the public are welcome to attend and speak in the public session at the start. Agendas are on the parish noticeboards and website, and minutes on the website.

- Tuesday, 2nd April 2024 (Little Ness Village Hall)
 - Tuesday, 7th May 2024 Annual Council Meeting (Nesscliffe Village Hall)
 - Tuesday, 4th June 2024 (Nesscliffe Village Hall)
 - Tuesday, 2nd July 2024 (Nesscliffe Village Hall)
 - **The Annual Parish Meeting—an open meeting for all parishioners will be held on Tuesday, 28th May 2024 at 7pm at Little Ness Village Hall. Refreshments to be provided and the theme will be Nesscliffe Hill & Country Park.**
-

Great Mess to Little Mess Community Projects

Just a few dates for your diaries.....

We plan to have a litter pick on Sunday, 21st April at 11am. We will also be taking part in The Big Help Out 24!! We are having a litter pick on Sunday, 9th June at 11am. Last year, it was a great success and good fun!

We are looking for sponsorship to raise funds for little projects we have lined up during the year - e.g. painting the football posts at Wilcot Park, and for our insurance, so if any local businesses or clubs would like to help, please contact us, Alison, Claire or Jim, as we would be so grateful.

See [community facebook page](#) for future events.



Our Values: Trust, Respect, Care, Courage, Perseverance, Responsibility

We believe that there is something wonderful to find in all of God's children and that everyone has the potential to sparkle. Our vision is to nurture and inspire our whole school community using love, respect and trust so that everyone can flourish using their unique and precious gifts and let their light shine to the world.

I hope this newsletter finds you and your families well. It has been an eventful year here at St. Andrew's CE Primary School, and I am delighted to share with you some of the exciting things that have been happening.

I am pleased to inform you that our school continues to grow. We have seen a significant increase in pupil enrolment in recent years, which is a testament to the excellent education and nurturing environment we provide. I am proud of our dedicated staff who consistently go above and beyond to ensure each child receives the best possible education.



I would like to highlight our school's spiritual mission to protect our planet. Our children have been actively engaged in various initiatives aimed at raising awareness about environmental issues and promoting sustainable practices. From recycling campaigns supported by the Iron Works to whole school participation in 'Protect our Planet' day. Our young eco-warriors have shown great enthusiasm and dedication towards preserving our beautiful planet.



Another highlight of the term has been the extreme reading challenge. Our children have embraced this opportunity to push their reading boundaries and explore new genres and authors. It has been wonderful to witness their excitement and see their love for reading grow. I would like to extend my heartfelt gratitude to all the parents and guardians who have supported their children in this endeavour.



Furthermore, we recently hosted an engaging science workshop that left our children in awe of the wonders of the universe. Through hands-on experiments and demonstrations, our budding scientists had the opportunity to explore various scientific concepts and develop their critical thinking skills.

The Friends of the School have been working tirelessly to organise exciting events throughout the year and we are incredibly grateful for their support. These events not only provide an opportunity for our school community to come together and celebrate but also help raise vital funds for school resources and activities.

I would like to acknowledge the incredible support we have received from the local community. Whether it is through volunteering, donating resources, or attending school events, your involvement has made a

In conclusion, I am incredibly proud of the achievements and progress made by our children and staff this term. With the unwavering support of our parents, guardians, and the wider community, St. Andrew's CE Primary School continues to thrive and provide a nurturing environment for our students to grow and succeed. Thank you for your ongoing support and kindness.

Mrs S Burgoyne, Headteacher

Great Ness & Little Ness WI

Meetings are at Nesscliffe Village Hall at 7.30pm

- March 21st — The Women's Land Army, speaker Emma Spencer.
- April 18th — Graphology, speaker Susan Ord
- May 16th — Folklore of the Welsh Marches, speaker Pamela Thom-Rowe
- June 20th — Visit to a Local Garden
- July 18th — Kinesiology, speaker Rachel McKewan
- Craft club meets every 4th Thursday of the month (except August), further information on request.

Mobile Library Service—*alternate weeks on a Thursday*

• 14th March 2024	9:30 –10:00	Nesscliffe Village Hall
• 28th March 2024		
• 11th April 2024	10:05—10:15	Nibs Heath No 31
• 25th April 2024		
• 9th May 2024	10:30—10:50	Valeswood, Woodside
• 23rd May 2024		
• 6th June 2024	11:00—11:35	Kinton, Kinton Farm
• 20th June 2024		

The Workshop on the Cliffe

Workshop Opening Times

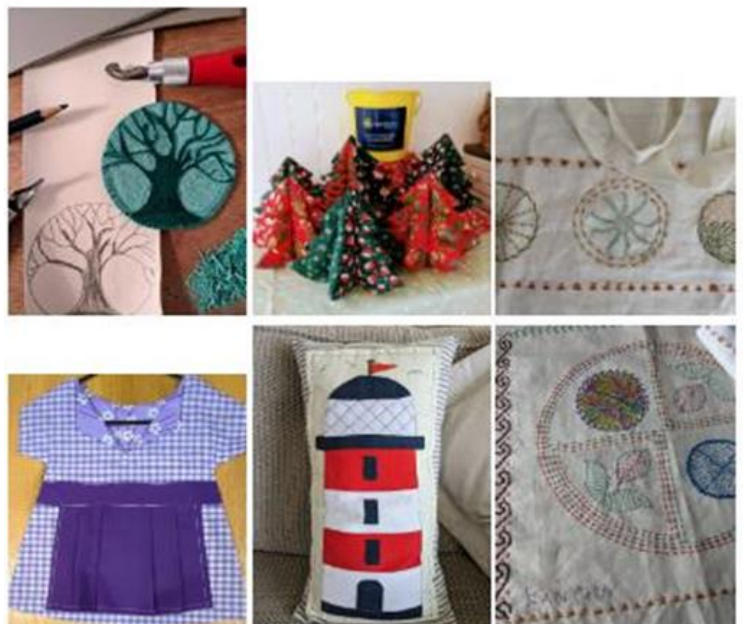
- Tuesdays 10am to 4pm
- Sundays 10am to 4pm

We offer a series of tutorial sessions followed by a 'Play Day' allowing you to try out your new skills

Sessions planned for the Spring include:
Linocut, Card making, Leatherette Tote Bags,
Door Organisers, Novelty Cushions and Peg
bags, Simple blouses.
Sewing machines and Art supplies available.

We are a non profit making group. Sessions fees
are requested on behalf of the Lingen Davies
Cancer Fund. Materials are provided at cost
where needed.

Please contact Jo on 07940536047 for further
details or email cliffecrafts@gmail.com



Nesscliffe Village Hall

The Christmas Bingo evening on 1st December 2023 was a great success with numbers attending back up to pre-Covid levels. Money raised from the raffle (£195) has been donated to Shrewsbury First Responders.

The events around the community Christmas tree were once again very popular. A big thank you to the Old Three Pigeons for hosting both the light switch on and carol singing/Big Christmas Quiz evening. Also a big thank you to St Andrews school who came down to put their Christmas wishes on the tree and entertained us with some Christmas songs.

The next event is the return of the comedy sketch evening 'From Here to Absurdity' which will be held in the Hall on 23rd March 2024 at 7.30pm. Tickets are available from Nesscliffe Service Station or contact Lorna - email lornapope@aol.com or mobile 07854035677. Look out for further information regarding further events for 2024 on local Facebook groups and noticeboards.

Hiring the Village Hall

Charges for hiring the Village Hall have been kept the same for another year and are very competitive. Charges are for sessions, rather than by the hour, giving plenty of time for setting up your event).

Little Ness Village Hall

- Boot Sale—11th May ,10am - 1pm £1 per entry.
 - Summer Quiz..22nd June
-

Church Around The Cliffe, including St Andrew's

Dear Parishioners

Spring is heavily upon us though I am beginning to wonder if there will be any daffodils left for Easter!!

You would be very welcome to join us at any of our services at the three churches to celebrate the most important Christian festival. Many do come to church on Easter Sunday but it is sometimes difficult to understand what is happening if you haven't thought either about Palm Sunday or the lead up to Good Friday. So here is our **Easter timetable**:

- Palm Sunday @ 10:30am: Come and remember Palm Sunday, receive a palm cross and hear the passion of Christ being read at Great Ness.
- Good Friday @ 11am: An hour of meditation of the Crucifixion with music and bible readings (*followed by a soup lunch*) at Ruyton.
- Easter Day Communion: 9am. Great Ness, 10am. Little Ness, 11am Ruyton.
- Advance Notice— Great Ness Church Flower Festival—6th and 7th July. Contact Jennie Brisbane for more information.



Blessings, Lucinda www.churcharoundthecliffe.org.uk 01939 261234

Nesscliffe Novelers

Book club, Nesscliffe Novelers meets the first Wednesday of the month, 6pm at The Three Pigeons.

Community Organisations and Groups

<p>St Andrew's CE School (Primary), Hopton Lane, Nesscliffe, SY4 1DB Email: admin.nesscliffe@westcliffe.shropshire.sch.uk Web: https://standrews.westcliffefederation.co.uk/ Head: Mrs S Burgoyne Tel: 01743 741331</p>
<p>Friends of St Andrew's <i>We are volunteers who help raise money for St Andrew's School in Nesscliffe. The money raised by the Friends is spent on equipment and resources to enhance our children's education experience and the school's facilities. But our Friends are about much more than simply fundraising. The Friends exists to provide closer links between home and school and it is an excellent way to bring staff, parents/carers and friends together socially in support of the school, working towards a common goal. It is fun too – just ask any of the Committee members or helpers.</i> Email: friendsofstandrews@hotmail.com Web: Friends of St. Andrew's School, Nesscliffe Facebook</p>
<p>The Corbet School (Secondary), Eyton Lane, Baschurch, SY4 2AX Email: admin@corbet.shropshire.sch.uk Web: https://corbetschool.net/ Tel: 01939 260296</p>
<p>Nesskids (Baby and Toddler Group) <i>Stay and play sessions for parents/carers and their babies and children under 5 years old. Spend time playing, working and learning with your little ones.</i> Contact: Beth Haycocks Email: beth.haycocks@westcliffe.shropshire.sch.uk Meets: Tuesdays in term time, at St Andrew's School, Nesscliffe, from 9.30 to 11.30am.</p>
<p>Nesscliffe Youth Club (for ages 9 to 16) <i>Meet every Monday night during term time at Nesscliffe Village Hall from 6:30-8:30pm. Entry is £1 and always thrilled to see new members, just drop in or for more information please contact the Shropshire Youth Association</i> Email: lee@sya.org.uk. Tel: 01743 730005</p>
<p>Prescott Surgery (Doctors), Prescott Fields, Baschurch, SY4 2DR Web: https://prescottsurgery.co.uk/ Tel: 01939 260210</p>
<p>Knockin Medical Centre (Doctors), Knockin, Oswestry, SY10 8HL Web: https://knockinmedicalcentre.nhs.uk/ Tel: 01691 682203</p>
<p>St Andrew's Church, Great Ness & St Martin's Church, Little Ness Contact: Rev Lucinda Burns, The Vicarage, Little Ness Road, Ruyton XI Towns, Shrewsbury, SY4 1LQ Web: http://www.churcharoundthecliffe.org.uk/st-andrews-great-ness/ Tel: 01939 261234</p>
<p>Nesscliffe Village Hall, Holyhead Rd, Nesscliffe, SY4 1AX Contact: Joan Evans (Booking Secretary) Web: http://www.nesscliffe.org.uk/nesscliffe-village-hall/ Email: tom.evans010742@btinternet.com Tel: 01743 741644</p>
<p>Little Ness Village Hall, Little Ness, SY4 2LG Contact: Monica Nunn (Booking Secretary) Web: https://www.facebook.com/LittleNessVillageHall/ E-mail: bookings@littleness.org.uk Tel: 01939 261374</p>
<p>Great Ness WI <i>Come and join our friendly group to listen to an interesting talk or demonstration, make new friends over a cup of tea and a selection of cakes, go on outings and meet other WI groups in the area.</i> Meets 3rd week of the month on Thursdays, 7.30pm at Nesscliffe Village Hall Facebook Page: https://www.facebook.com/Greatnesswi, Contact: Diana Forrester 07734 039166</p>

<p>Nesscliffe Rounders Team</p> <p><i>Nesscliffe Rounders Team is part of the Minsterley and District Rounders League. We play on Tuesday nights at Nesscliffe playing fields and other nights if are playing away. We visit many villages around Shropshire to play our matches. We are a ladies team only and you can join at the age of 13 to 113!</i></p> <p>Email: nessclifferoundersteam@hotmail.com, Tel: 07968173974</p>
<p>Nesscliffe Short Mat Bowls</p> <p>Meets Thursdays at 7.30pm at Nesscliffe Village Hall with exception of 3rd week of the month when meet on a Friday.</p>
<p>Nesscliffe Young Farmers</p> <p><i>Part of one of the largest rural youth organisations in the UK dedicated to young people who have a love for agriculture and rural life. You don't need to be involved in farming to be a Young Farmer – just someone who appreciates the countryside and enjoys rural life. If you are between 10 and 26 and think this sounds appealing, why not contact us.</i> Meets every other Tuesday at 7.30pm at Nesscliffe Village Hall</p> <p>Contact: Chairman Will Lewis: 07983467857 or Secretary Jess Mason: 07508993685</p>
<p>Nesscliffe Novelers Book Club</p> <p>Meets first Wednesday of the month, 6pm at The Old Three Pigeons</p>
<p>Community Facebook Groups & websites</p> <p>“Nesscliffe Community” – Facebook group Nesscliffe Community / Facebook</p> <p>“Wilcott Watch” – Facebook group Wilcott Watch / Facebook</p> <p>“Great Ness & Little Ness Parish Council Facebook Great Ness and Little Ness Parish Council / Facebook</p> <p>Parish Council website— http://www.greatnessandlittlenessparishcouncil.org/</p> <p>Community website— http://www.nesscliffe.org.uk/</p>

Who's Who on the Parish Council?

Please direct queries to the Clerk in the first instance

<p>Alison Mullis (Chairman)</p> <p>White House, Wilcott Lane, Nesscliffe, SY4 1DB</p> <p>Email: alisonmullis1@outlook.com</p> <p>Tel: 07960 674803</p>	<p>Rebecca Turner (Parish Clerk)</p> <p>The Old Police House, Nesscliffe, SY4 1DB</p> <p>Email: parishclerkgnln@gmail.com</p> <p>Tel: 01743 741611</p>
<p>Sue Peters</p> <p>36 Kingsway, Wilcott, SY4 1BG</p> <p>Email: s.t.peters@btinternet.com</p> <p>Tel: 01743 741749</p>	<p>Phil Brooks (Vice Chairman)</p> <p>Lindfield, Great Ness, SY4 2LE</p> <p>E-mail: philbrooks1914@btinternet.com</p> <p>Tel: 01743 741533</p>
<p>Jim Diggory</p> <p>9 The Crescent, Nesscliffe, SY4 1DE</p> <p>Email: jcdiggory02@gmail.com</p> <p>Tel: 01743 741477</p>	<p>Eleanor Gilbert</p> <p>52 The Crescent, Nesscliffe, SY4 1DF</p> <p>Email: N/A</p> <p>Tel: 01743 741456</p>
<p>Claire Dickinson</p> <p>Oak Lodge, Nesscliffe, SY4 1DB</p> <p>Email: cdickinson@kub-uk.net</p> <p>Tel: 07833 209635</p>	<p>Ed Davis</p> <p>Pleasant View, Ruyton Rd, Little Ness, SY4 2LJ</p> <p>Email: mlsmdivs@aol.com</p> <p>Tel: 01939 809298</p>
<p>Mike Arthur</p> <p>The Malthouse, Little Ness, SY4 2LG</p> <p>E-mail: mjpaldt@gmail.com</p> <p>Tel: 01939 261174</p>	<p>Richard Turner</p> <p>The Old Police House, Nesscliffe, SY4 1DB</p> <p>Email: councillorturner@gmail.com</p> <p>Tel: 01743 741611</p>

<p>Shropshire Councillor Ed Potter</p> <p>Email: Edward.potter@shropshire.gov.uk</p> <p>Tel: 07779117802, SC General: 0345 678 9000</p>	<p>Police – SNT Shrewsbury Rural West</p> <p>Email: shrewsburyrw.snt@westmercia.police.uk</p> <p>Telephone: 101, Emergencies: 999</p>
---	---