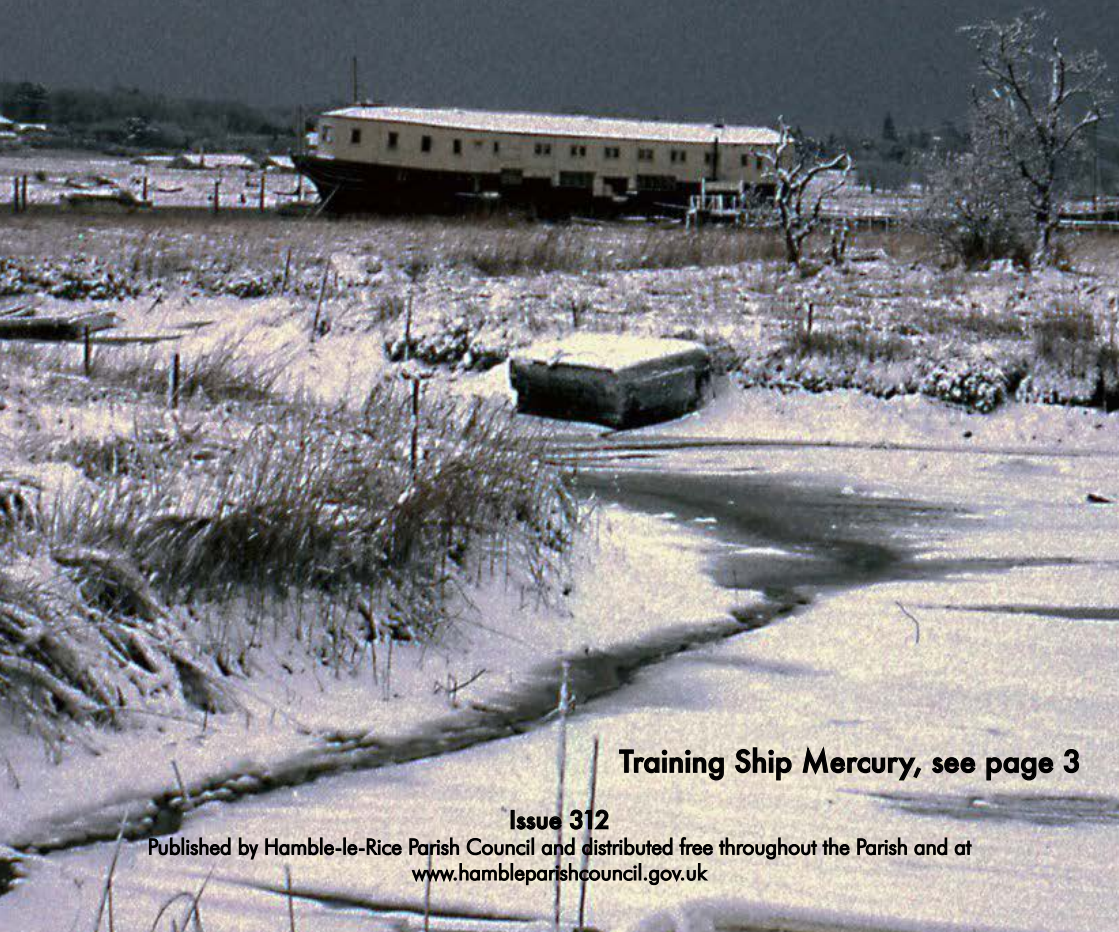


Hamble-le-Rice

VILLAGE MAGAZINE

FEBRUARY 2018



Training Ship Mercury, see page 3

Issue 312

Published by Hamble-le-Rice Parish Council and distributed free throughout the Parish and at
www.hambleparishcouncil.gov.uk

Hamble marquee hire



*Marquee hire, all types of catering, temporary bars,
furniture hire and luxury toilets for
Weddings, parties, corporate events and all occasions.*



www.rumshack.co.uk

Call us on 07973719622 for information

email enquires to ian@rumshack.co.uk

Council News

At the first Council meeting of this year the Parish Council co-opted two new councillors to fill the vacancies that were reported in the last Council News. It was pleasing that there was a number of good applicants offering their services to the parish and the successful candidates are long time residents who have lived in Hamble for 25 years and can offer a range of useful skills and experience to the Parish Council. Janine Dajka and Andy Thompson are your new Parish Councillors.

The Parish Council has decided to change its meetings arrangements for a trial period which starts at the beginning of February. There will now be only one Council meeting a month on the second Monday and there will be a Planning Committee meeting on the fourth Monday. The Personnel, Asset Management and Burial committees will continue as previously but a new Finance Working Group will meet quarterly.

Regarding planning the Parish Council has objected to the application at the Osborne Quarters, Netley, to convert its ancillary police training buildings to provide 40 dwellings. There were a number of reasons given for objection but the main one was its strategic position in the countryside and the area is not identified as an area for housing development in the local plan. The Council has been informed that the refusal by the Borough Council of the planning application for a dementia care centre adjacent to the Blackthorn Health Centre has been taken to appeal.

A recent meeting was attended by Sgt Matt Moss and he responded to the Council's concerns about the perception that there was a limited visible police presence around the parish. He explained that Hamble had two dedicated officers WPC Penny Young and PCSO Phil Davenport who were part of a team of seven covering

Hamble-le-Rice Parish Council

Memorial Hall, High Street, Hamble-le-Rice, Southampton SO31 4JE

Telephone: 023 8045 3422 (Office) or 07402 648 050
07949 160 885 (Grounds Team)

Email: clerk@hamblepc.org.uk / asstclerk@hamblepc.org.uk
groundsman@hamblepc.org.uk

Office open Mondays and Fridays 9am to 12.30pm and 1.30pm to 5pm
(open until 6pm on the second and fourth Mondays of the month)

Hamble-le-Rice
VILLAGE MAGAZINE

Advertising & Editorial Enquiries: 07805 012 794 / vmag@hamblepc.org.uk

DEADLINE FOR MARCH ISSUE: 3pm, Tuesday 13th February

The views represented in contributions submitted are not necessarily those of the Parish Council's or the editor. The editor and Parish Council accept no responsibility for goods or services advertised.

Hamble-le-Rice

VILLAGE MAGAZINE

2018 ADVERTISING RATES

RATES ARE DISPLAYED EX VAT.
ALL RATES ARE SUBJECT TO VAT AT THE CURRENT RATE OF 20%

Size (width x height)	One off (PER ISSUE)	Annual (10 ISSUES)
EIGHTH PAGE 63mm x 45mm	£15.13*	£91.96
QUARTER PAGE 63mm x 92mm	£28.30	£175.56
HALF PAGE 128mm x 92mm	£57.75	£351.12
FULL PAGE 128mm x 186mm	£114.92	£703.40
INSIDE COVER FULL PAGE 128mm x 186mm	£120.08	£735.00
BACK COVER FULL PAGE 128mm x 186mm	£135.71	£877.51

* Minimum 3 months.

Annual invoices are issued in advance.

The Parish Council publishes 2,500 copies of each issue and it is delivered to all households and businesses in Hamble village.

The current month's magazine is displayed on our website at:
www.hambleparishcouncil.gov.uk

There are 10 editions of the colour magazine per year.
August/September and December/January are combined.

Please supply your full-colour artwork for your advert in either **jpeg/jpg** or **PDF** format.
Hamble Parish Council does not offer a design and set up service.

FOR GENERAL ADVERTISING ENQUIRIES AND TO BOOK:
vmag@hamblepc.org.uk / 07805 012 794

FOR INVOICING OR PAYMENT QUERIES:
asstclerk@hamblepc.org.uk / 023 8045 3422

Whilst every effort has been made to provide up-to-date rates, these may be subject to change.
Please refer to www.hambleparishcouncil.gov.uk for the latest rates.

Council News (continued)

a large area. The role of the PCSO had changed significantly over the last couple of years, working in a less visible capacity with vulnerable children and in domestic situations. It was agreed to identify problem areas and to meet regularly to discuss the community's priorities.

It is this time of year that the Council has to set its budget and request its precept (Council Tax for Hamble). To enable it to carry out improvements to Hamble, the Parish Council has decided to increase its precept by £5.70 for an average D Band property. It has also agreed its budget for the next financial year which includes some modest increases in fees such as sports field hire, Foreshore car park and some burial ground charges to bring them more in line with neighbouring councils. Further details are on pages 14 & 15.

Thank you to everyone who contributed to Hamble's Christmas decorations and particularly the very successful dressing of the Christmas trees outside of the Memorial Hall, with special mention of thanks to Hamble Fire Brigade for its help. There was positive feedback regarding

Hamble's Christmas decorations from residents and visitors alike. The Parish Council is looking into further improvements for next Christmas.

The Parish Council has made a comprehensive response to the County Council's Hamble Lane consultation. As well as responding to the questions asked at the exhibitions and giving its views regarding improvements, it expressed its concern that the presentation lacked hard data to make valid conclusions, the questions in the consultation were not at all clear and there was no extra provision for parking at Hamble Halt station.

This is the time of year for applying for a space in the dinghy park and the Dinghy Park Regulations have been reviewed and amended. Although the Parish Council received a request to lease part of the dinghy park the Council will continue to manage the whole of it.

The Parish Council was pleased to receive the news that BP has decided to not sell the Oil Terminal.

FRONT COVER PICTURE: TS MERCURY

The picture on the front cover is of Training Ship Mercury most probably in the severe winter of 1962-3. The Mercury boys slept on the training ship, not ashore. The ship was heated by a coal boiler with pipes going around the ship.

Coaling the ship was a regular event which entailed two cadets manhandling large dustbins filled with coke from the coal store ashore to the ship. This involved carrying,

unless a wheelbarrow could be found, along several hundred yards of footpath, down the wooden pier and loading them into a cutter to be transferred to the ship.

Over the Christmas leave of 1962-3 the heating pipes on the ship burst and the start of the new term was delayed by a week while plumbers undertook repairs. The TS Mercury boys endured a tough regime!

P & L DECORATING

HAMBLE - ESTABLISHED FOR 20 YEARS

- Interior and Exterior
- Free Estimates
- Fully Insured
- No job too small



Tel: 023 8045 3196
Mob: 07517 976 198
Email: philbolwell@gmail.com

Odd Job John



For those DIY jobs you don't have
time to do!

Working in and around Hamble

Just Ask...

John Coke
t - 07966 187041
e - ojhamble@gmail.com
f - @OddJobJohnHamble
w - oddjobjohn-hamble.co.uk

HAMBLE SPA ROOM

*An experience to experience
Offering*

- Full range of Espa Face, Body treatments & Body wraps
- Airbase makeup – a flawless finish for that special day - Wedding/Proms etc
- Various Massage techniques, including Hot stones
- Lycon Wax – the best wax for a comfortable waxing experience
- Luxury Manicure - Pedicure – Shellac
- Hamble Spa Room 'Ready & Wrapped' gift vouchers available.

Call Sonia – 07727 461008 or visit the web site – www.hamble-spa.co.uk
22 Deanfield Close, Amy Gardens, Hamble, SO31 4JJ

Hamble Oil Terminal Serving the local community

Contact Justyn Willsmore
BP Hamble Public Affairs - 023 8045 6028



Message from the Clerk

A rather belated Happy New Year to you. By the time this reaches you the festive period will I'm sure seem a distant memory but I hope it was a happy one. Our parish preparations for Christmas were focused on getting the tree and the lighting in The Square right as well as providing an opportunity for the community to help us dress the trees at the Memorial Hall. To everyone that came along and got involved a big thank you, but especially to the local Fire and Rescue Service for the help they provided on the day. I'm pleased to say that this year's feedback has been positive. We will start to look at what we do next year when Coronation Parade is finished to create a real impact at the entrance to the village.

The latest update from Eastleigh Borough Council is that the work at Coronation Parade will start with the parking bays on Coach Road within the next few weeks with the main contract for the remaining works starting shortly afterwards.

Good progress has also been made with the new Community Library and Resource Centre which should complete in the early summertime. A number of people have volunteered to help run the new service and we will be contacting them shortly to start planning for its opening. This will be an exciting new facility for the Parish and we hope that we can use it to provide a range of opportunities for new and existing groups. If you haven't volunteered yet and want to be involved please get in touch, or if you have an idea that you want to chat through then come in and see us.

We have spent the last few months looking at the We R Hamble survey results and how to pull that into a Village Plan. In setting the Councils budget for 2018/19 it has set aside resources for a number of projects. We will be replacing benches at College

Playing Fields and at the Southern Quay, increasing the number of bins at Westfield Common and generally reviewing and improving signage. A bigger project is to start looking at the feasibility of refurbishing and improving the Roy Underdown Pavilion and more importantly to redevelop Mount Pleasant. The play area is tired and in need of replacing as is the Pavilion itself. Redeveloping the building presents a number of opportunities to reconfigure the layout of the existing facilities whilst safeguarding the area for recreational use. As the Council develops its ideas and plans we will of course be consulting with and wanting to gather the views of residents on the proposals.

On the subject of consultations there has been a number that residents have been invited to comment on recently. Our responses to the both Highways England and Hampshire County Councils consultation on Hamble Lane are on the website and importantly we have asked HCC to come and meet with the Parish Council once the results have been collated. I hope that everyone in the village that has a view on the problems with Hamble Lane took the time to comment whether they are residents, community groups or businesses. As we have the opportunity to discuss the issues further with HCC please let us know if there are issues that you think we need to know about. We want to be able to present them with a detailed list of local improvements so make sure you let us know if you think there's something that's been missed.

Lastly the Parish has asked for feedback from both GE Aviation and MDL on their recent consultations and in particular how the responses will be addressed in any future plans. Watch this space for an update!

Amanda



YOUR LOCAL ACCOUNTANTS - HOW CAN WE CAN HELP?

Our Hamble-based team offer a friendly and professional service to local businesses.

Our clients include trades, professional consultants and the marine industry.

WE CAN HELP YOU COMPLY WITH YOUR OBLIGATIONS

• VAT • Tax • Accounts

AND HELP YOU BUILD YOUR BUSINESS

• Management Accounts • Budgets • Growth Planning

FREE INITIAL CONSULTATION

023 8045 3907 enquiries@accountably.co.uk www.accountably.co.uk

1st Floor, Unit 12, Compass Point, Ensign Way, Hamble, Southampton SO31 4RA

Little
Brook
House

Residential Care Home



A home that radiates warmth and understanding



Hampshire Care
Association
You're in caring hands

01489 582 821

www.littlebrookhouse.co.uk

101 Brook Lane, Warsash, Southampton SO31 9FE

HAMBLE CONSERVATION VOLUNTEERS



February's task is to renovate and occasionally re-site the bird boxes we have positioned across the Common. The boxes must be cleaned thoroughly so that pests and parasites are not passed on to birds making use of the boxes. Based on experience of previous years, we expect to find that over 75% of the boxes have been

used during the previous nesting season. This suggests that our birds welcome the protection the boxes afford from predators such as grey squirrels and magpies.

Beach and Common cleans are also vital, made necessary by the actions of a small number of people who do not seem to appreciate the damage their behaviour has on the Common and its wildlife.

BEACH CLEANS

Wednesdays 7th and 21st February.

The next conservation tasks is:

BIRD BOX MAINTENANCE

Wednesdays 14th February.

Meet 10am Hamble Point Car Park.

Please wear clothing suitable for the weather on the day.

We provide all equipment but welcome contributions to the tea fund.

To book your place for this event please contact Philip:

07810 453 138

hambleconserve@btinternet.com

www.hambleconservationvolunteers.org.uk

ALLOTMENT RENTS

At a meeting of the Hamble-le-Rice Parish Council held on the 27th November 2017 the allotment rent was reviewed as part of the Council's 2018-19 budget considerations.

It was resolved by the Parish Council to increase the rent charged to allotment holders at the Hamble Lane Allotment Gardens:

Currently the allotment rent is £6.50 per Rod.

It was resolved to change this to £7.00 per Rod.

This increase will come into effect from the 1st January 2019 and will be applied to all allotments at the Hamble Lane allotment gardens.

This notice will be displayed on all the notice boards in the village, on the Council's website www.hambleparishcouncil.gov.uk and at the Allotment Gardens, Hamble Lane, Hamble le Rice. It will also be sent to the Hamble Allotment Association.



Hamble £224,950

Hamble £259,950

Hamble £319,950



Hamble £339,950

Hamble £359,950

Hamble £599,950



Hamble £475,000



Hamble £674,950



Jonathan Terry Est. 1998 Independent Funeral Directors and Monumental Masons

Providing Professional and Personal Funeral Services
to Hamble, Netley Abbey, Bursledon and all areas of Southampton.

Golden Charter Pre Paid Funeral Plans
Home Visits - Memorials for all types of graves

We invite you to visit our website
www.jonathanterry.co.uk
to view our full company profile.

Office and Chapel of Rest
101 Peartree Avenue, Bitterne
Southampton SO19 7JJ
Tel: 023 8043 4444

Office and Chapel of Rest
3 College Place, London Road
Southampton SO15 2FB
Tel: 023 8023 4533

HAMBLE-LE-RICE FLOWER CLUB



Our January meeting was, what is becoming a great favourite, an In House demonstration and afternoon Tea Party. Ladies, close to 40 of who turned up, wore hats, and the tea was laid out by the Committee, all very smart! We were entertained by Christine Wright (pictured, above) with flowers and stories of her time demonstrating on the Cunard Queen Victoria on their Gardens Cruise early last year. She also talked about competing at the Chelsea Flower Show and involvement with various Flower Festivals. It was a lovely afternoon, much enjoyed by all, and here's to the next one!!



Monday 12th February

A practical session entitled "Small World" when we all bring small items, flowers, greenery etc and create a "Small World", where everything has to be to scale, with help from our tutor Pat Maple. These are very useful learning sessions for members.

Monday 12th March

Our Annual General Meeting (2pm) which starts with lunch at 12 noon, members must pre-book this to help with catering. This AGM starts our 30th Anniversary Celebrations, Pearl Anniversary, and to help celebrate we have a Special Evening Demonstration on Thursday 26th July with Kathryn Kier, a well known demonstrator entertaining us. Please put this date in your diaries, more details later.


Advanced Notice:

Hamble Flower Club is designing and will be putting together a Flower Festival at St. Andrews Church, Hamble, to commemorate the centenary of the ending of the Great War, 1914 - 1918, over the Remembrance days of Friday 9th November to Sunday 11th November 2018,

The Club would like any details of Hamble family members who were involved in World War 1, photos, information etc. to help with the history and design' Judy Raponi, 02392554157, or Sheila Barker 02380453718.

The Hamble Le Rice Flower Club consists of a friendly group, mainly but not exclusively of ladies, who meet on the second Monday of each month at 2pm in the Hamble-Le-Rice Memorial Hall.

Visitors welcome at all Club events, just turn up or if you require more details/tickets: Valerie Pritchard, Chairman: 8045 5952
Sheila Barker, Vice Chairman. 8045 3718
Jenny Pam, Events: 8045 7065



• OSTEOPATHY •
• THERAPEUTIC MASSAGE •
• SPORTS MASSAGE •

Assessments & Treatments Available For :

- Back pain/sclatica • Neck pain/whiplash
- Joint & muscle pain
- Headaches • Sports injuries

For appointments call Sally on 07803 726173
sally@hambleosteopath.co.uk
www.hambleosteopath.co.uk

LJM BOOKKEEPING SERVICES

- Self Employed/Small Businesses
 - Bookkeeping to Trial Balance
 - Computerised Accountancy
 - Credit Control
 - VAT Returns
- Preparation of Final Accounts for Sole Traders
- Self-Assessment Tax Returns
 - Payroll

Holiday Cover can also be provided for

Hourly Rate Charged

Contact Lynda on 07774 790543
or Email:

ljmbookkeepingservices@gmail.com

HAMBLE LADIES' GROUP

Is it too late to wish everyone a Happy New Year. Hope not because I am going to anyway. Happy and Healthy New Year to you all.

Hamble Ladies Group finished on a high with another very enjoyable Christmas Dinner party held at 'The Beach Hut' in Hamble where we were thoroughly looked after again by Phil and his team who dished up an excellent meal enjoyed at a fantastic venue amongst excellent company.

Our first meeting in January 2018 was our AGM and I am happy to say that all the Committee Members are happy to stay 'in office' for another year.

This year we celebrate our 25th Anniversary and we have a few exciting things up our sleeves to help commemorate this very special occasion, including a special celebration in June

Our speaker for February is: Judy Theobald.

Our speaker for March is: Matthew Whitfield.

Both speakers are coming along to chat to us about their lives and come highly recommended.

Watch this space for news of what else will be happening.

-Bobby Conduit

TUESDAY 13TH FEBRUARY

Speaker: Judy Theobald.

TUESDAY 13TH MARCH

Speaker: Matthew Whitfield.

New members are always welcome - Our meetings start at 7.30pm and are held in the Priory Centre, Hamble, why not come along and join us.

MJM Plumbing & Heating

The complete plumbing & heating service with 25 years experience

FREE ESTIMATES FULLY INSURED ALL WORK GUARANTEED FOR 12 MONTHS
NATURAL GAS & LPG DOMESTIC & COMMERCIAL

- NEW HEATING SYSTEMS - REPLACEMENT BOILERS & UPGRADES
- 7 YEAR WARRANTY AVAILABLE ON SOME BOILERS
- BOILERS SERVICED & REPAIRED
- HEATING SYSTEMS POWERED & FLUSHED
- BATHROOMS, SHOWERS & WATER SOFTENERS
- GAS FIRES, COOKERS & WATER HEATERS INSTALLED, REPAIRED & SERVICED
- WARM AIR HEATING INSTALLED, REPAIRED & SERVICED
- UNVENTED HOT WATER SYSTEMS INSTALLED, REPAIRED & SERVICED



Gas Safe
Reg No:
14371



Oftec
Reg No:
529990



TEL: 023 8056 2504 (HAMBLE)
MOB: 07773 385946
EMAIL: info@mjmplumbing.co.uk
WEB: www.mjmplumbing.co.uk

HAMBLE GOOD NEIGHBOURS NEED YOU!

For many years Hamble Good Neighbours have been working in the village to help by providing transport to mainly older people to get them to their medical appointments where this would otherwise be very difficult for them.

We are a group of willing volunteer "Good Neighbours" and are now needing to recruit more help in the following areas:

Treasurer

To receive donations, pay out expenses and "balance the books".

Co-ordinators

To take calls from clients and arrange for a driver to undertake the tasks. A dedicated

phone line is used, this is a shared role with others and time commitment is negotiable.

Secretaries

To help where needed with basic secretarial tasks.

Drivers

To transport clients to appointments. Mileage allowance paid and you decide which jobs you are willing to do.

For all these roles training and support is available.

If you feel you can spare some time to help with this valuable service please phone the co-ordinator on 0845 643 0371 to discuss in more detail how you can help.



The Netley
Wellness
— Clinic —

Osteopathy • Acupuncture • Massage

Headaches & Migraine • Arthritis & Joint Mobility
Neck, Shoulder & Back Pain • Relaxation & Tension Relief
Improve Physical & Mental Wellbeing • Digestive Problems
Sports Injuries & Rehab • Fertility & IVF Support
Sciatica • Pregnancy, Infants & Children

07954 950855
info@thenetleywellnessclinic.co.uk
www.thenetleywellnessclinic.co.uk

29c Station Road, Netley Abbey,
Southampton, SO31 5AE




Gecko Projects Ltd

Resin Driveway Specialist

Give your home kerb appeal, tired tarmac or concrete drives transformed in 2 days

GOLD SERVICE, pressure wash, prime, fit edging system & lay resin of your colour choice from £55 per square meter

PLATINUM SERVICE, excavate drive, lay compacted crushed concrete & new edgings, lay porous sub base & resin colour of your choosing from £75 per square meter

office 02380 601061
mobile 07502297779
email build@geckoprojects.co.uk



NEW ORGANISERS NEEDED FOR CAROLS IN THE SQUARE

Once again, hundreds of people gathered for Carols in the Square on Christmas Eve. This event, which started back in the 1980s with a small gathering of local residents, has grown into a major community occasion which now also attracts people from outside the village. As ever, in the spirit of Christmas people dug deep in their pockets and over £1,600 was raised for local charities.

It was almost twenty years ago that St Andrew's Church stepped into the breach to organise Carols in the Square thus ensuring that it continued. Things were simpler then and for a long time no formal permissions were needed. Times have changed and in recent years everything has become more tightly regulated. New Health and Safety legislation has been introduced and more permissions, licences, insurances and risk assessments have been required. As numbers attending started to exceed five hundred, professional amplification became necessary, and safety of the public and crowd control have become major issues. All this has had to be managed at the same time as the Vicar supported by lay people are at their busiest preparing for all the Christmas services and other events.

The scale of Carols in the Square and the



preparatory work throughout the year has now become so great that, reluctantly, St Andrew's Parochial Church Council has decided that the church can no longer organise it, because we simply do not have sufficient resources. The task has become too great for the small group of volunteers we have to call upon, many of whom are well into retirement.

If Carols in the Square is to continue in 2018 and beyond, new organisers need to be found.

For many families, going to Carols in the Square on Christmas Eve has become an integral part of their Christmas celebrations and it is hoped that one of the other organisations in Hamble will be willing to take it over, thus ensuring this popular village tradition continues.

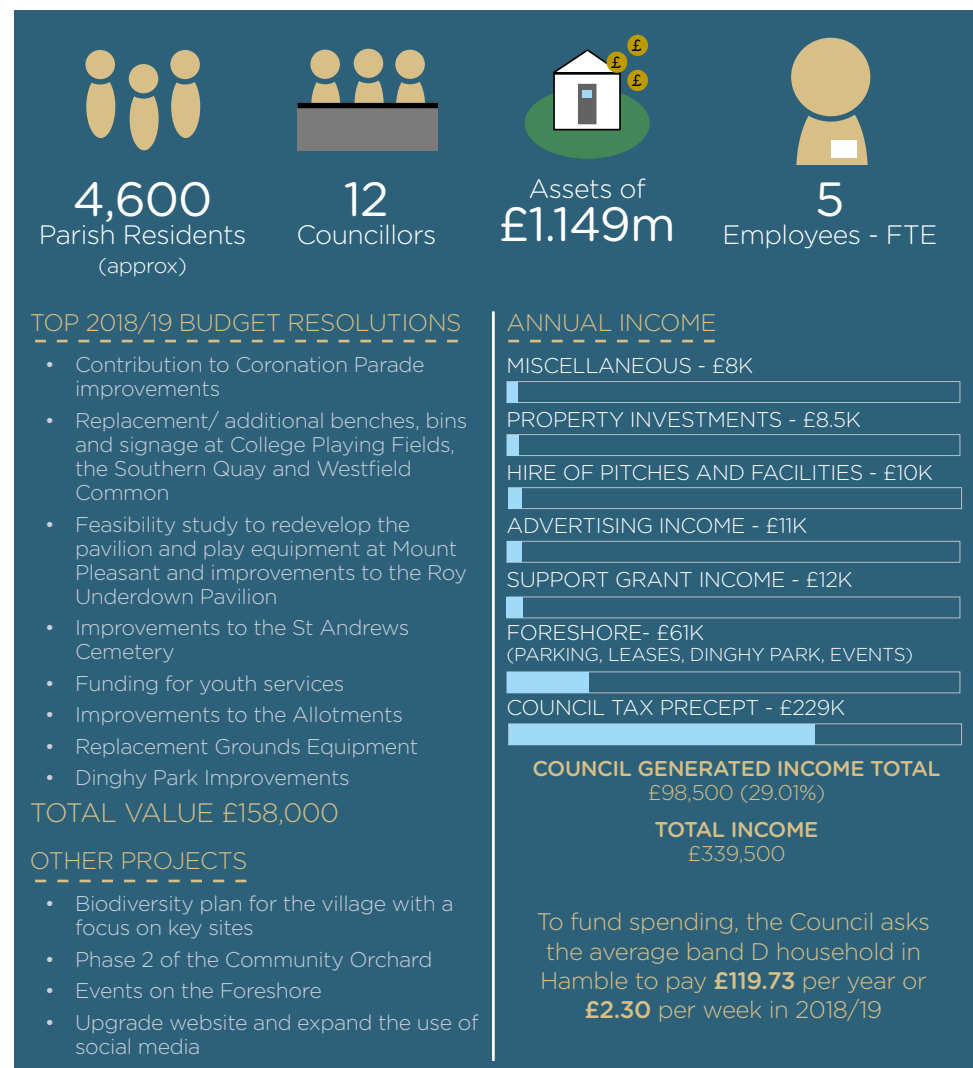
There will be an open meeting on Thursday 22nd February at 7pm in the back hall of the Memorial Hall for people or representatives of any groups or organisations that are interested in taking over the organisation of Carols in the Square or have ideas or suggestions for the future.

Hamble Parish Council – Budget and Priorities for 2018/19

The Parish Council sets an annual budget each year. Unlike many parish councils, Hamble has a number of income sources which it uses to fund work in the village. It is also given a grant from Eastleigh Borough Council.

The Council has spent a lot of time reviewing contracts, the use of technology and looking at new opportunities to save money and we will continue to do so this next year.

For 2019, the Council has agreed a programme of investment in village facilities. Some of this is being funded from Council savings but the rest needs to come from the parish precept which is collected as part of your Council Tax bill. This year the Council have decided to increase the parish charge by £5.70 next year which is the equivalent of a 5% increase.



WHAT ARE THE KEY AREAS OF SPENDING?

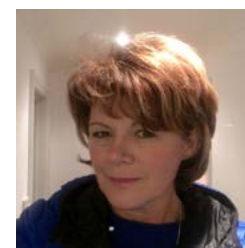
- STAFFING, WELFARE AND TRAINING - £196K
- PARISH OFFICE - £12.5K
- MAINTAINING PUBLIC AREAS AND FACILITIES* - £46K
- GOVERNANCE AND ACCOUNTABILITY - £18K
- COMMUNICATIONS AND CONSULTATION - £18K
- INITIATIVES - £13.5K
(festive lights, PCSO, HYPE, Community Orchard)

*COUNCIL PUBLIC AREAS & FACILITIES INCLUDE:

Mount Pleasant Pavilion and recreation ground,
Roy Underdown Pavilion and playing fields,
Westfield Common,
Dinghy Park, Foreshore Car Park, 3 play areas plus the MUGA, Moorings, Land off of Hamble Lane (Hamble FC, Squash Club and Sea Scouts), Allotments, Burial Grounds & Public toilets

YOUR NEW PARISH COUNCILLORS

Hamble Parish Council has chosen two new councillors to fill the vacancies arising from the resignation of Tim Hughes and Craig Palmer last year. The call for councillors attracted a number of applications and the Council would like to thank all of those that showed an interest.



Janine Dajka has lived and worked in the village for over 25 years. Janine has worked in a number of local businesses most significantly as a sales negotiator

for a local estate agent and has extensive insight into the local market and the planning system. She has been involved in a number of community issues including the introduction of charges in The Square Car Park as well as opposing the inclusion of the Airfield in the County Council's Minerals Plan.

Janine is keen to focus on planning issues and hopes to be a member of the Councils new Planning Committee. She also has some invaluable experience of finance which it is hoped will support the councils work in providing value for money in the way it does business.
mcjdajka@gmail.com



Andy Thompson is our other new Councillor. Andy is local to the area and has lived in the village, again for 25 years. Much of Andy's career was spent at Ordnance

Survey where he was involved in different aspects of ICT. He has experience of large IT infrastructure projects including in Europe. On leaving OS he set up his own IT business and latterly branched out into property maintenance. Back in 2008 he was the Chair of the Hamble Village Plan which is timely given it is now being refreshed on the back of the We R Hamble Consultation. He is keen to look at issues linked to improving Hamble Lane and in particular the use of the cycle lane and has some ideas to promote recycling in the village.

andyfthompson558@gmail.com

If you would like to get in touch with either of them, full contact details are on the website.



Need **free** legal advice?

Want services with **no hidden costs**?

Prefer to know about **fees upfront**?

Ask Eric!®



0800 083
2820



www.askeric.co.uk

G. Grogan Plumbing & Heating Ltd

Gas Servicing & Central Heating
Boilers – Installation & Servicing
Solar – Installation & Servicing

DOMESTIC & COMMERCIAL

T: 01489 691999
M: 07887 757979
E: the.plumber@ntlworld.com



REPOINTING & RAKING OUT

All types of pointing with minimal dust
Repointing and wall tie specialist



Nick Goff

Hamble

Southampton

07771964235

Nickag67@aol.com



S. LINTON DECORATING

Over 20 years experience
No obligation quotes and advice given
Good knowledge of the best methods and materials
Work carried out in a clean a tidy manner
Reliability assured
Fully insured

02380 230 588
stuartlinton75@gmail.com

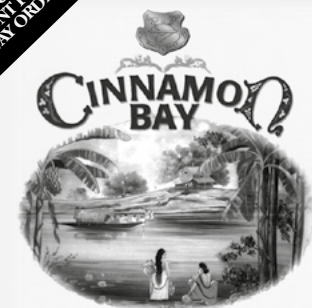
Hamble-le-Rice VILLAGE MAGAZINE

To make sure your business
is in the next issue:

CALL
07805 012 794

or EMAIL
vmag@hamblepc.org.uk

20%
DISCOUNT FOR
TAKE-AWAY ORDERS



Contemporary Indian Cuisine

4-7 High Street, Hamble, Southampton SO31 4JE

Tel: 023 8045 2285

Tel: 023 8045 4477

Opening Hours:

7 days a week - 5:30 to midnight

All major credit cards welcome

Free Car Parking

www.cinnamonbayhamble.co.uk
reservations@cinnamonbayhamble.co.uk

VISIT OUR FACEBOOK PAGE

BOTOX • FILLER • FACIAL PEELS
CRYOPEN
(FREEZING SKIN TAGS/WARTS/SUN SPOTS)

Skin Dr AESTHETIC TREATMENTS
BY A
GP SPECIALISED IN
DERMATOLOGY

Book a Complimentary Consultation to find out more

The Salon, 2 The Square, Hamble
 02380 458458
 www.facebook.com/SkinDrClinic
 skindrclinic@gmail.com

Bespoke Dining Prepared by us
Presented by you

For all your local catering requirements including
Dinner Parties, Afternoon Teas, Office Lunches,
Christenings & Funerals

T: 023 8045 5418
M: 07980 261648
E: morven@bespoke-dining.com
W: www.bespoke-dining.com

F.C. HUGHES
FUNERAL DIRECTORS

46 St. Johns Road, Hedge End S030 4AG
Tel: 01489 782404

- Our staff are at your service 24 hours a day
- Memorial advice and products available
- Funeral Plans Available

• Members of The National Association of Funeral Directors

Part of Dignity plc.
A British Company

www.dignityfunerals.co.uk

ADVERTISE IN

Hamble-le-Rice
VILLAGE MAGAZINE

SEE PAGE 2 FOR RATES

Need a local venue for your class?

60 People Capacity
Up to 4 Hours Only £35
LARGE FREE CAR PARK

THE ROY UNDERDOWN PAVILION, HAMBLE
The perfect spot to meet indoors or outdoors

Call 023 8045322 or email asstclerk@hamblepc.org.uk to book your hire

PARTIES - CLASSES - MEETINGS - BBQs

BERYL ROGERSON MEMORIAL LUNCHEONS

The next lunch will be held on February 22nd at Hamble Village Memorial Hall and all parishioners of 70 years or more are welcome together with spouses and carers.

You will be greeted with a glass of sherry or soft drink followed by a two-course hot lunch served with wine and finished with coffee and mints.

There will be entertainment and a raffle but most importantly an opportunity to meet other people. We are particularly pleased to welcome newcomers so please encourage friends and acquaintances and people new to Hamble who may not have been before.

Community transport available if required; the Hall is fully accessible.

Please take completed forms with a donation of £5 per person to either Hamble Post Office at Coronation Parade or to the Parish Office at the Memorial Hall.

Closing Date Wednesday February 14th

Application Form

Beryl Rogerson Memorial Lunch February 22nd 2018 12.30 – 3pm

Name(s)

Address.....Telephone.....

I enclose £ (minimum £5 per person). (Please pay with cash, we pay charges on cheques)

Do you require transport? (please tick) Yes ☐ No ☐

Special dietary requirements?

Send this form, with your money to the Parish Office or Hamble Post Office. Please put your name and address on the outside of the envelope so that we can use it to deliver your tickets

Closing date Wednesday February 14th



Expert building and windows, all you need under one roof

With a **100% customer satisfaction** rating last year for windows, doors and conservatories

This **reliable local family** run firm has 20 years experience in the building trade and offering a high quality finish. Services include:

Extensions and New Build
Windows, doors and
conservatories (with 10 years guarantee)
Decoration and Maintenance

No job is too small, please contact us for a friendly, honest, value-for-money quote and advice

01489 664455

www@kijnhomeimprovements.co.uk



R&M

Proud members of
Checkatrade.com
Where reputation matters

PROPERTY MAINTENANCE LTD

All External and Internal work undertaken

Specialising in:

- All aspects of Roofing
- Pitched/Flat roofs
- Slate, Tile & Lead work
- UPVC Facias and Guttering
- Roof Windows
- Brick work including Chimneys & Re Pointing
- Patios & Decking
- Laminate & Hardwood Flooring

- Fully Insured
- Trading Standards Approved
- Member Of Checkatrade
- Free Quotations
- Friendly & Reliable

With over 25 years of experience within the Construction Industry

Contact Ray on: **07757 808 290**
Or Email: randmpropmain@talktalk.net

EASTLEIGH NEIGHBOURHOOD WATCH ASSOCIATION

The first Neighbourhood Watch (NHW) scheme in this country was formed in a village near Chester in 1982. Today NHW is the largest voluntary organisation in the UK – there are more than 170,000 schemes in England and Wales, covering about 3.8 million member households – that's about one in seven households across the country. NHW works with the Police to reduce crime and the fear of crime and is an all-volunteer organisation apart from a small number of administrative staff in the National headquarters in Leicestershire.

In a time of ever more funding cuts and staff reduction, the reality is that the Police can't deal with all the problems and issues arising from crime and anti-social behaviour alone - they need the support of the whole community. We have to do more ourselves and NHW provides a way for local people to provide this support and contribute to making our communities safer. Across the UK, communities face different challenges for crime prevention according to factors such as geography, local assets, housing and local transportation amongst others. Without doubt though, in all cases, NHW schemes can help by:

- Limiting the opportunities for crime and anti-social behaviour through increased awareness of current, new and emerging threats, adoption of simple crime prevention measures, and timely reporting of suspicious activities.
- Getting residents to join together against crime and increase the sense of community.

Whilst 'neighbourhood schemes' can exist independently there are benefits in being part of a Neighbourhood Watch structure that helps with coordination of schemes and communication with the Police. Direct benefits of NHW include opportunities for reduced insurance for households and provision of Public Liability Insurance for Coordinators.

Eastleigh Neighbourhood Watch Association (ENWA) is your local Association and represents around 300 NHW schemes and 10,000 households in the Eastleigh Borough.

Why not make your New Year's resolution to do two things to make yourself, your family and your community safer?

The first thing you can do is to join or set up a local NHW scheme. ENWA will help establish a scheme in conjunction with local PCSOs. Our website (www.eastleighbnw.org.uk) gives information on joining or setting up a local NHW scheme, as well as advice and useful links to information on preventing cybercrime and other scams. If you are already a member of a scheme, make sure that your Coordinator has your email address – this simplifies and speeds up communication greatly.

The second thing to do is to ensure that you receive prompt alerts of threats or local crimes. The best way to do this is to register with Hampshire Alert, a community messaging system for police, local authorities and Neighbourhood Watch across Hampshire.

Every NHW scheme should have someone (usually the Coordinator) who is registered with Hampshire Alert and will pass on key information from local crime alerts (along with other NHW information) to their scheme members. However, any resident can register directly with Hampshire Alert (see www.hampshirealert.co.uk) to receive information from Hampshire Constabulary. You do not need to join a specific NHW scheme to do this but if you choose to, they will welcome your participation.

On behalf of Eastleigh Neighbourhood Watch Association may I wish you a Safe and Peaceful 2018.

- Dr Mike Anthony, ENWA Chairman
mikea.enwa.chair@gmail.com

"Attention Club Members"

HAMBLE CLUB

BEAULIEU ROAD, HAMBLE
Telephone: 8045 2213

THE FAMILY CLUB
Membership Available

- LIVE MUSIC
- BINGO - Wednesdays, Sundays
- Small/Large Function Room Available
- Catering can be arranged
- showing all your favourite games on Sky Sports
- Free WiFi

BADGER CLEANING SERVICES

Carpet & Upholstery Cleaning

A Hamble based Company specialising in cleaning carpets and upholstery

Please phone for a quote.

023 8178 7229 / 07780 652933

SOLENT GARDEN SERVICES LTD

ESTABLISHED 1973

www.solentgardenservices.co.uk

Based in Hamble since 1973

Tel : 07787594682
Email : robwoodh01@msn.com

- Garden Maintenance
- Regular Mowing
- One Off Mowing
- Tree Surgery
- Hedge Cutting
- Fencing
- Landscaping
- Design Service

Proud members of **Checkatrade.com**
Where reputation matters

Need a local venue for your party?

60 People Capacity
Up to 4 Hours Only £35
LARGE FREE CAR PARK

THE ROY UNDERDOWN PAVILION, HAMBLE
The perfect spot to meet indoors or outdoors

Call 023 8045322 or email asstclerk@hamblepc.org.uk to book your hire

PARTIES - CLASSES - MEETINGS - BBQs

HAMBLE LOCAL HISTORY SOCIETY



Itchen Village

A ferry, Spitfires and J Class yachts' crews

This could be about Hamble but the Society's next meeting is 'The Story of Itchen Village' a similar neighbouring community. Cheryl Butler will be talking about the village that grew up around a ferry crossing, along an important coastal route to Southampton.

At the beginning the village was small with a handful of families, who were employed in farming, fishing and the running of a ferry. They became good sailors and developed their own iconic Itchen Ferry sailing boat. Soon yacht racing became the staple employment for the men of the village, including providing crews for the famous J Class yachts of America's Cup fame.

The village also became a place where flying boats were developed and the most



famous aircraft of them all, the Spitfire. Being the home of the Spitfire, its factory was bombed in the Second World War.

Why not come along to the Roy Underdown Pavilion on Thursday 8th February at 7.30pm and join us to find out about the Itchen Village Story? New members and visitors are always welcomed! Our meeting fee is just £2. If you would like more information please contact our secretary, Janet Flack, telephone 8045 7189.

ROOFCARE

- Guttering Repairs: Cleaning / Clearing / Unblocking
 - Fascia board repainted or UPVC renewal
 - Gutter guards or 'Hedgehogs' fitted
- Main roof repairs: Slates / Tiles / Hips / Ridges / Vents.
- Chimney Repairs: Lead-work replacement / Repointing etc

NO JOB TOO SMALL: 15% OAP REDUCTION: FREE ESTIMATES

Please ring Les: 02381 781 364

FROM THE COUNCIL'S RECORDS

100 YEARS AGO - **Common Foreshore Fence**

A letter was read from the Board of Trade stating that they are advised by the Ministry of Munitions, by whose instructions the fence had been erected, that in the general interest of the public it is essential that the fence should remain in its present position.

FEBRUARY 1918

100 YEARS AGO - **Rest Seats**

... that Miss Mackintosh had offered to raise by a subscription list to provide for "Rest Seats" for Wounded Soldiers, on the Quay, "The Green" and other suitable places. The Seats when provided to be vested in the Parish Council as Parish property. It was agreed to gratefully accept ...

FEBRUARY 1918

75 YEARS AGO - **Parish Hard**

... that a letter be sent to the Divisional Officer of the National Fire Service Kings Worthy, drawing his attention to the state of the Parish Hard which is used by his service, and is now in a bad state of repair, mainly due to their usage of it ...

FEBRUARY 1943

75 YEARS AGO - **Obstruction to Church Footpath**

In their letter its is regretted that no definite assurances can be given as to what will or will not be done at the end of the emergency. The importance of public rights of way is fully realised by the Air Ministry.

FEBRUARY 1943

50 YEARS AGO - **Planning List**

... Rev. S.C. Watson - Erection of 7 dwellings and garages, including making roads, footpaths etc, at the Vicarage, Hamble.

FEBRUARY 1968

50 YEARS AGO - **The Close Satchell Lane**

... a notice which had appeared in the Echo asking for tenders for making up the road at The Close, Satchell Lane, he was anxious the work to be carried out in accordance with requests made by the residents.

FEBRUARY 1968

25 YEARS AGO - **Parish Meeting**

To consider this Council's response to the Planning Application for 50 social housing units on land at Beech Close/Coach Road, known as the Cabbage Patch ...

FEBRUARY 1993

The Gables Care Home



CARE, COMFORT & COMPANIONSHIP

6th most recommended care home in South East England 2015 as awarded by carehome.co.uk

Full time activities & entertainments co-ordinator

Visit www.carehome.co.uk to view recommendations

For more information please call Heather or visit us at anytime

- Residential Care
- Respite
- Day Care
- Dementia Care

13 St. MARY'S ROAD, NETLEY ABBEY

Tel: 023 8045 2324



THE ABOVE IS AS RECORDED IN THE ARCHIVES (IMU)

DATES FOR YOUR DIARY IN FEBRUARY

Tuesdays 6th and 20th
St. Andrew's Café



Serving light lunches,
coffee and tea.
10.30am-12.45pm,
The Priory Centre

Tuesday 6th
Bursledon and District
Gardening Club



A talk by Jennifer Carter
"Wonders of the Antarctic".
Competition: A House Plant.
7 for 7.30pm,
St. Paul's Church, Pilands
Wood.
£2 per meeting for visitors.
Membership £10.
Refreshments, Raffle &
Topical Gardening Tips.
Further information:
02380 402986

Thursday 8th

Hamble Local History
Society: Story of Itchen
Village



See page 23.
7.30pm, Roy Underdown
Pavilion

Monday 12th
Hamble-le-Rice Parish
Council Meeting



All Council meetings are
open to the public.
Each agenda includes
a Public Session where
members of the public
may speak on any
matter.
7pm,
Roy Underdown Pavilion

Tuesday 13th
& Wednesday 14th
Owl Babies Story Trail



Story trail around
the Park with a Craft
activity. Suitable for
5yrs and under. Please
wear wellies and bring a
waterproof coat.
Booking is essential as
spaces are limited.
£6 per child.
10am or 2pm, Royal Victoria
Country Park Shop.
02380 455157

Listing of an event does not
constitute endorsement.
Details believed to be correct
at the time of publication.

Thursday 22nd
Carols in The Square:
Open Discussion



People or representatives
of any groups or
organisations that are
interested in taking over
the organisation of Carols
in the Square or have
ideas or suggestions for
the future are invited to
attend this meeting.
7pm, in the back room of
the Village Memorial Hall.

Friday 23rd
Hound Local History
Society: History and
Development of the
Chapel



The speaker will be Paul
Del A More, project
manager of the current
restoration project.
Visitors are welcome.
Tea & Coffee available.
£3. 7.30pm, St Edward's
Church Hall, Grange Road.
Contact Jeff on 8056 2946

Regular Events

Date Monthly	What	Where
2nd Monday	Hamble Flower Club	Memorial Hall
4th Monday	RAF Association Itchen & Hamble branch (Contact: Steve Rawlings 02380 740771)	12pm, Hamble Club
1st Tuesday	Bursledon and District Gardening Club	7pm, St Pauls Church, Bursledon
2nd Tuesday	Hamble Ladies Group	7.30pm, Priory Centre, St Andrew's Church
1st & 3rd Weds	Hamble Conservation Beach Cleans	10am, Hamble Point Car Park
2nd Wednesday	Hamble Conservation Task	10am, Hamble Point Car Park
4th Wed	Informal Bereavement Support Group (Contact: Heather Smith 02380 452998)	2pm-4pm, The Priory Centre
1st Thurs	Hamble Business Group (Contact: John Murphy 07940 794307)	6pm, Victory Inn
24th February	Place 2B Café (Coffee, Cake & Conversation)	10am-12pm, Priory Centre

Date Weekly	What	Where
Monday	Monday Club	1.30pm, Hamble Club, Beaulieu Road
Monday (except Bank Hols)	Hamble River Singers Community Choir (Contact basschickbev@gmail.com)	7.30pm , HRSC Rooms
Monday	U-Tone Circuit Training	8.15-9.15pm, Memorial Hall (Rear Hall)
Tuesday	Parent & Toddlers Group	9.30-11.30am, Memorial Hall
Tues & Thurs	Pilates	(Tues 12-1pm) (Thurs 10-11am) Memorial Hall
Wednesday	Yoga	10-11.30am, Memorial Hall
Wednesday	Body Control Pilates (Contact: Caroline 07803 302654)	9am-10am, Roy Underdown Pavilion
Wednesday	Chairobics: fully seated energetic exercise to music. First class free. (Contact Julie: 07952 983 349)	11am-12pm, Roy Underdown Pavilion.
Wednesday	Cherubs (Contact: Father Graham Whiting 023 8045 2148)	10.30am - 12pm, St. Andrews Church.
Wednesday	Acting Up For class times contact: 07519 754829	Memorial Hall
Thursday (from 4th Jan)	Walking Netball	9-10am, Hamble Sports Complex
Friday	Village Market	Memorial Hall, 9.30-10.45am

Cut this page out and keep it handy - it's now only in the Magazine every quarter!

HANDY CONTACT NUMBERS

BEE SWARM COLLECTION	M Barringer	8056 1792
		07941 203 102
BUS PASSES (Eastleigh)		8068 8068
EASTLEIGH BOROUGH COUNCIL (All depts)		8068 8068
FRIENDS OF HAMBLE PRIMARY SCHOOL	Kate Gillespie	8045 3678
HAMBLE BROWNIES	Michelle Main Miller	8045 6357
HAMBLE GOOD NEIGHBOURS (Medical Appt Transport Service)	Co-Ordinator	0845 643 0371
HAMBLE CLUB	Mrs A Moore (Sec)	8045 6189
HAMBLE CLUB FC	Colin Williams (Sec)	8122 7187
HAMBLE COMMUNITY SPORTS COLLEGE		8045 2105
HAMBLE CONSERVATION VOLUNTEERS	Philip Rawlinson - hambleconserve@btinternet.com	07810 453 138
HAMBLE FLOWER CLUB	Rosemary Dorman	8045 2385
HAMBLE HOCKEY CLUB	Mark Hobbs, Sec. markehobbs@hotmail.co.uk	07740 440021
HAMBLE LADIES' GROUP	Bobby Conduit	8045 3626
HAMBLE RNLI LADIES GUILD	Evelyn Ingram/Margaret Robinson	8045 6085
		8045 5499
HAMBLE LIFEBOAT	Janet Motherwell (Sec) 83 Satchell Lane	8045 6792
HAMBLE LOCAL HISTORY SOCIETY	Janet Flack	8045 7189
HAMBLE MONDAY CLUB	Mary Austin	8045 5436
HAMBLE PARENTS & TODDLERS GROUP	Diana Richings	8045 7730
HAMBLE LE-RICE PARISH COUNCIL	Amanda Jobling	8045 3422
HAMBLE PLAYERS www.hambleplayers.hampshire.org.uk	Fred Brazier	8056 1465
HAMBLE POST OFFICE		8045 2323
HAMBLE PRIMARY SCHOOL		8045 3298
HAMBLE SEA SCOUTS (Beavers 6 - 8)	Lisa Russell	07966 162 754
HAMBLE SEA SCOUTS (CUBS 8 - 10.5)	Sue Hand	07775 856 345
HAMBLE SEA SCOUTS (10.5 - 15, Explorers 15-18, Networks 18-25)	Annette Dyke	8044 1007
HAMBLE SEA SCOUTS (ALL SECTIONS)	info@hambleseascouts.org.uk	
HAMBLE SQUASH CLUB	Sharon Hoey	07745 220 149
HAMBLE VILLAGE MARKET	Chris Pullen	07732 843 442
HAMBLE VILLAGE PLAYSCHOOL	Julie Ash (Administration)	07903 388 568
HAMBLE YOUTH FOOTBALL CLUB	Don Ross (Sec)	8056 0561
HAMPSHIRE COUNSELLING SERVICES	Maureen Fyffe www.hampshirecounsellingservice.co.uk	01329 822 923
HAMPSHIRE COUNTY COUNCIL		01962 841 841
HANTS DIRECT (highways)		01329 225 398
HENVILLE EDUCATIONAL FOUNDATION	Mrs W Mason	8045 2720
HOSPITAL TAXI SCHEME		0845 602 4135
MEMORIAL HALL BOOKINGS	Rebecca Whitaker-Veryard (Bookings Sec)	0798 3220588
NATIONAL BUS TIMETABLE		0870 608 2608
NATIONAL RAIL ENQUIRIES		0845 758 5950
ONE COMMUNITY	16 Romsey Road, Eastleigh	8090 2400
POLICE		101, 999 in the event of an emergency
RIVER HAMBLE MOORING HOLDERS' Assoc.	Jeremy Clark	8040 2767
ROMAN CATHOLIC CHURCH	Rev Caro Conde, Station Road, Netley Abby, Hants	8044 8671
SCOUTS - Spartan Explorers (13 - 17 year olds)	Sue (not part of the Sea Scouts)	8056 0766
ST ANDREW'S CHURCH (inc Priory Centre)	Father Graham Whiting	8045 2148
Priory Centre bookings	Jeff Law	8045 4299
Thurs Family Fellowship	Pat Gillman	8045 2422
Cherubs	Father Graham Whiting	8045 2148
Beacons	Roy Baker	07971 721 652
TESCO BUS	Mrs Thurman	8045 3574
TS MERCURY OLD BOYS' ASSOCIATION	Capt D Parsons, Westmead, 49 The Park, Yeovil, BA20 1DF	01935 414 765
WOMEN'S WALKING NETWORK	Jenny Cudmore	8045 2877
YMCA Youth Service (Southampton)		8022 1202

MONDAY

STEAK & RED

Start the week with a succulent 7oz rump steak with a glass of red wine for £13, or share a carafe and two steaks for only £35.

TUESDAY

MOULES & FRITES

For only £12 enjoy a glass of house wine and Moules Frites. Perfect meal after a long walk in Hamble.

WEDNESDAY

BURGER NIGHT

Expect handmade, locally sourced or premium options on this weekly changing menu.

THURSDAY

VEGAN NIGHT

The Bugle's menu is always vegan-friendly. But on Thursday night Chef creates an expansive choice of delicious vegan dishes. And why not ask our staff about our vegan-friendly drinks too.

FRIDAY

SAUSAGE, STICKS & FISH & CHIPS

Enjoy a bowl of local sausages for just £3, or just £1 for loyalty card members, available between 5-6.30pm. Or if you fancy something more substantial you can enjoy two portions of fish and chips and a bottle of house wine for only £30, available 6-7pm.

SET LUNCH MENU

MONDAY - FRIDAY

Two courses £15 | Three courses £18

SUNDAY

Two courses £18 | Three courses £20



Sales & Lettings

LEADERS



LEADERS LIGHT THE WAY

During the long nights of winter let
Leaders light the way on your property journey.



01489 858347



leaders.co.uk