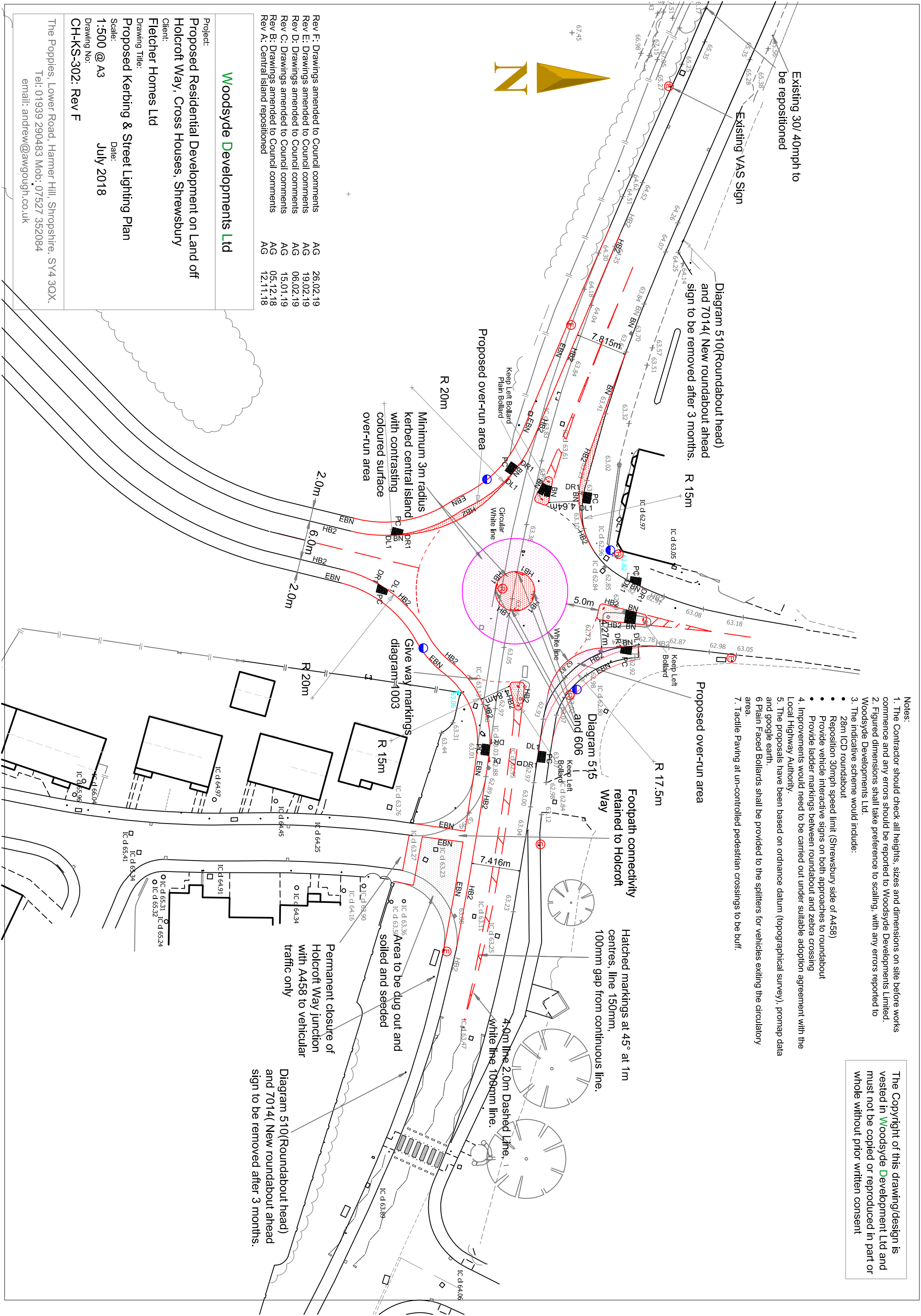


The Copyright of this drawing/design is vested in **Woodsyde Development Ltd** and must not be copied or reproduced in part or whole without prior written consent

- Notes:
1. The Contractor should check all heights, sizes and dimensions on site before works commence and any errors should be reported to Woodsyde Developments Limited.
 2. Figured dimensions shall take preference to scaling, with any errors reported to Woodsyde Developments Ltd.
 3. The Indicative scheme would include:
 - 28m LCD roundabout
 - Reposition 30mph speed limit (Shrewsbury side of A458)
 - Provide vehicle interactive signs on both approaches to roundabout
 - Provide ladder markings between roundabout and zebra crossing
 4. Improvements would need to be carried out under suitable adoption agreement with the Local Highway Authority.
 5. The proposals have been based on Ordnance Datum (topographical survey), promap data and Google Earth.
 6. Plain Faced Bollards shall be provided to the splitters for vehicles exiting the circularity area.
 7. Tactile Paving at un-controlled pedestrian crossings to be buff.



Rev F: Drawings amended to Council comments	AG	26.02.19
Rev E: Drawings amended to Council comments	AG	19.02.19
Rev D: Drawings amended to Council comments	AG	06.02.19
Rev C: Drawings amended to Council comments	AG	15.01.19
Rev B: Drawings amended to Council comments	AG	05.12.18
Rev A: Central Island repositioned	AG	12.11.18

Woodsyde Developments Ltd

Project:
Proposed Residential Development on Land off
Holcroft Way, Cross Houses, Shrewsbury

Client:
Fletcher Homes Ltd

Drawing Title:
Proposed Kerbing & Street Lighting Plan

Scale:
1:500 @ A3

Drawing No:
CH-KS-302: Rev F

Date:
July 2018

The Poppies, Lower Road, Hammer Hill, Shropshire, SY4 3QX.
Tel: 01939 290483 Mob: 07527 352084
email: andrew@awgouqh.co.uk