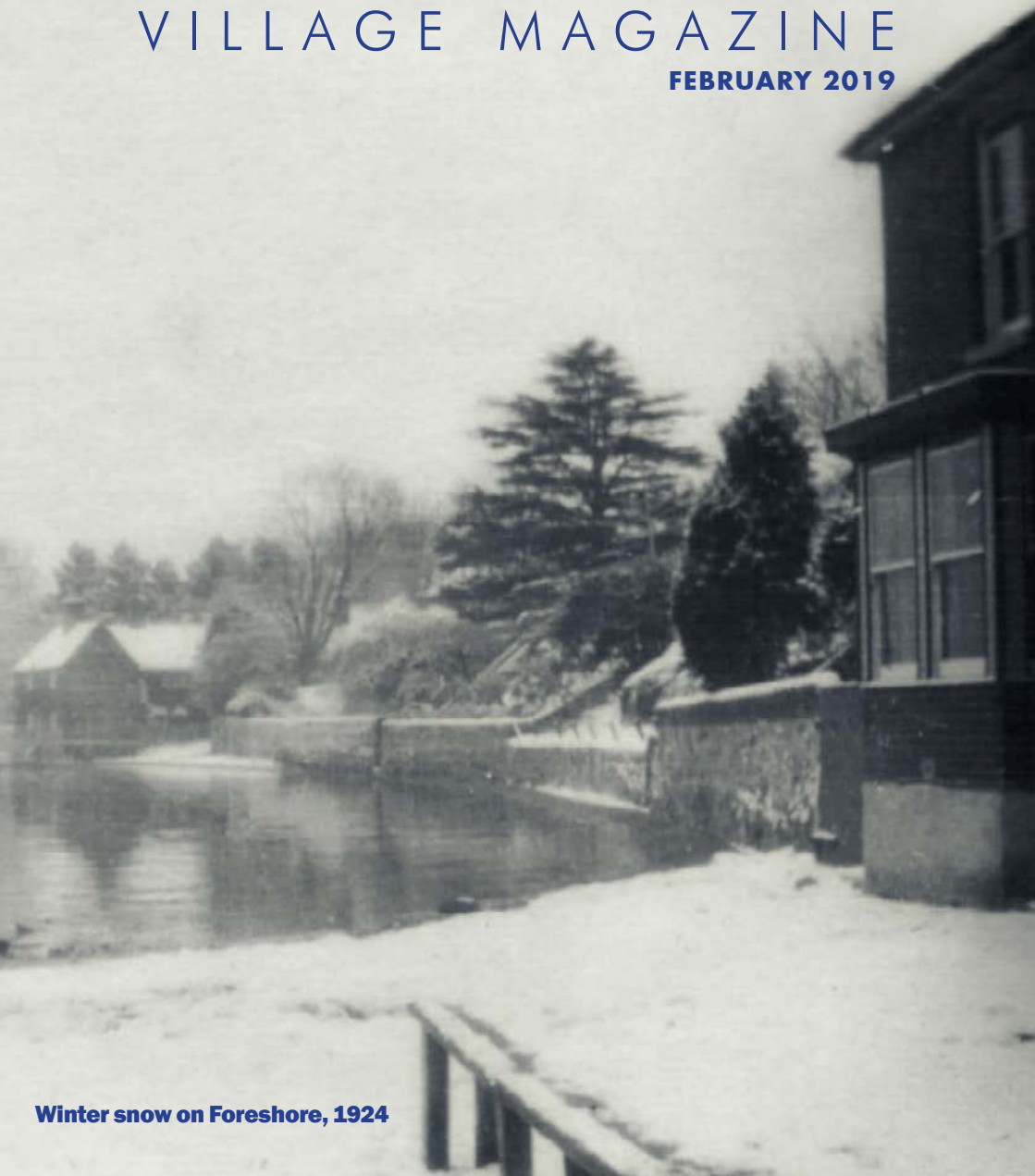


# Hamble-le-Rice

VILLAGE MAGAZINE

FEBRUARY 2019



**Winter snow on Foreshore, 1924**

Issue 322

Published by Hamble-le-Rice Parish Council and distributed free throughout the Parish and at  
[www.hambleparishcouncil.gov.uk](http://www.hambleparishcouncil.gov.uk)

# Hamble marquee hire

*Marquee hire, all types of catering, temporary bars,  
furniture hire and luxury toilets for  
Weddings, parties, corporate events and all occasions.*



[www.rumshack.co.uk](http://www.rumshack.co.uk)

Call us on 02382182458 for information

email enquires to [ian@rumshack.co.uk](mailto:ian@rumshack.co.uk)

## Council News

Since the last Village Magazine was published, the Parish Council has resolved to object to the GE Aviation planning application for the erection of up to 148 dwellings on its car park and sports field as well as improvements to its sports facilities and to Sydney Lodge. This followed a public meeting to receive parishioners views on this application and many of the Council's reasons for objection reflected points made at this meeting. The Council's main objections were that it was not in an area identified for development in the Local Plan, the impact of additional traffic on Hamble Lane, it does not include sufficient affordable housing and would put extra pressure on local services. GE Aviation had stated the development would help protect employment, but the Council believes capital raised from this development could not guarantee the factory's future.

The Parish Council have commissioned a

company to undertake a traffic survey of the village-end of Hamble Lane including considering the impact of the GE Aviation application. At the Council's last meeting it reported its initial findings. The main points, not surprisingly, were that there was a lot of congestion on Hamble Lane and, compared to other areas, the peak period was much longer i.e. 6am-10am and 2pm-7pm. More information can be found on page 7. A report was submitted to both Eastleigh Borough Council (EBC) and Hampshire Highways as part of the Parish Council's response to the GE application and it is understood that further work has been requested from GE as a result. The Parish Council will be commissioning further traffic monitoring and a business survey to better understand their travel patterns.

The Planning Inspector of the Public Inquiry regarding the appeal site for 70 homes at Satchell Lane has allowed the

### Hamble-le-Rice Parish Council

Memorial Hall, High Street, Hamble-le-Rice, Southampton SO31 4JE

**Telephone:** 023 8045 3422 (Office) or 07402 648 050  
07949 160 885 (Grounds Team)

**Email:** [clerk@hamblepc.org.uk](mailto:clerk@hamblepc.org.uk) / [asstclerk@hamblepc.org.uk](mailto:asstclerk@hamblepc.org.uk)  
[headgroundsman@hamblepc.org.uk](mailto:headgroundsman@hamblepc.org.uk)

The Parish Office is now open Monday to Friday  
10am to midday and 2pm to 4pm (except Bank Holidays)

**Hamble-le-Rice**  
VILLAGE MAGAZINE

**Advertising & Editorial Enquiries:** 023 8045 3422 / [vmag@hamblepc.org.uk](mailto:vmag@hamblepc.org.uk)

**DEADLINE FOR MARCH ISSUE:** 3pm, Tuesday 12th February

The views represented in contributions submitted are not necessarily those of the Parish Council's or the editor. The editor and Parish Council accept no responsibility for goods or services advertised.



**citizens advice Eastleigh**

**Need help to overcome a problem?**

Citizens Advice Eastleigh will be offering a new monthly drop-in advice session on the first Wednesday of each month.

**Starting 6th February  
10am to 12.30pm  
at The Mercury Library  
and Community Hub.**

*Odd Job John*

**...for DIY jobs you don't have time to do!**

**Working in and around Hamble**

John Coke  
t-07966 187041  
e-ojjhamble@gmail.com  
f-@OddJobJohnHamble



**Bespoke Dining**

prepared by us  
presented by you

Private parties, buffets, canapés, afternoon tea  
catered for you by Morven Brown

T: 01489 601059  
M: 07980 261648  
E: [morven@bespoke-dining.com](mailto:morven@bespoke-dining.com)  
W: [www.bespoke-dining.com](http://www.bespoke-dining.com)

**HAMBLE SPA ROOM**

*An experience to experience*  
Offering

- Full range of Espa Face, Body treatments & Body wraps
- Airbase makeup – a flawless finish for that special day - Wedding/Proms etc
- Various Massage techniques, including Hot stones
- Lycon Wax – the best wax for a comfortable waxing experience
- Luxury Manicure - Pedicure – Shellac
- Hamble Spa Room 'Ready & Wrapped' gift vouchers available.

Call Sonia – 07727 461008 or visit the web site – [www.hamble-spa.co.uk](http://www.hamble-spa.co.uk)  
22 Deanfield Close, Amy Gardens, Hamble, SO31 4JJ

**Hamble Oil Terminal**

Serving the local community

Contact Justyn Willsmore  
BP Hamble Public Affairs - 023 8045 6028



## Council News (continued)

appeal. Although in an area identified as countryside, and there being sufficient housing supply in the Borough the Inspector stated given the national objective to provide more homes it was a sustainable development. The Borough Council is considering whether to request a Judicial Review but this will be on procedural matters rather than the planning issues.

At its last meeting, the Council agreed its budget, projects and charges for the next financial year 2019/20. This has resulted in its precept, i.e. Council Tax for Hamble, being increased by 2.2% which reflects the current rate of inflation. This takes into account the Borough Council withdrawing £12,000 of Revenue Support Grants to the Parish over the next 3 years. With careful financial planning, the Council can still undertake projects for the benefit of parishioners while maintaining sufficient reserves.

The new boundary for Hamble has been confirmed and will take effect from April this year, incorporating land on the east side of Hamble Lane up to Mallards Road. This will bring the whole of the Hamble School campus and the Blackthorn Health Centre into the Parish, as well as Wessex Manor and a few other houses and businesses.

The Council has received the latest report on crime statistics for our area. By the time the Magazine has reached you, the Parish Council will have held a public meeting to discuss crime and community safety issues where interested local organisations were also invited. Representatives from Hamble's Neighbourhood Policing Team

and the Borough Council were available to answer questions and discuss local issues.

The Council will also be hosting a meeting with Dinghy Storage Park users at The Mercury on the 11th February from 5.45 until 6.30pm, prior to the Council meeting. This is an opportunity for the Dinghy Storage Park Working Group to feed back on its work over the last 12 months and to identify priorities for the coming year.

Being able to bring The Mercury Library and Community Hub into full operation has been out of the Parish Council's control. The hold-up has been due to the Borough Council having to deal with outstanding snagging and building issues such as power and Wi-Fi. EBC are planning further work to ensure that the library is set up and established by the end of March. Unfortunately, the library aspect of the Mercury is not part of Hampshire County Council Library service and as a result the set up is taking longer to conclude. While this goes on, the Parish Council will be working with the contingent of trained volunteers who are in place to run the facility getting them familiarised with the building and the procedures.

Work on refurbishing the Bartlett's Field playground is progressing and, weather permitting, should be finished by early February. The design and implementation of the new children's playground was the result of consulting potential users and the Council hopes they will enjoy playing on the equipment in a safe environment.

*Agendas, minutes and reports for all Council meetings can be found on our website:  
[www.hambleparishcouncil.gov.uk](http://www.hambleparishcouncil.gov.uk)*





## YOUR LOCAL ACCOUNTANTS - HOW CAN WE CAN HELP?

Our Hamble-based team offer a friendly and professional service to local businesses.

Our clients include trades, professional consultants and the marine industry.

### WE CAN HELP YOU COMPLY WITH YOUR OBLIGATIONS

• VAT • Tax • Accounts

### AND HELP YOU BUILD YOUR BUSINESS

• Management Accounts • Budgets • Growth Planning

## FREE INITIAL CONSULTATION

023 8045 3907 enquiries@accountably.co.uk www.accountably.co.uk

1st Floor, Unit 12, Compass Point, Ensign Way, Hamble, Southampton SO31 4RA

After 21 years at Hamble Estate Agency Keith Bridges is retiring and passing over the helm of the business to Vicky Siou, who is currently the sales manager. Vicky has worked for the company in various positions over the past 16 years.

Vicky will continue to serve the local community in providing a bespoke service in facilitating the sale and purchase of local village homes.

During the 21 years that Keith was running the business Hamble Estate Agency agreed sales on some 1,842 properties worth £458.6 million pounds.



### HAMBLE ESTATE AGENCY

Worthy House, High Street, Hamble  
Southampton, Hampshire, SO31 4HA  
[www.hambleestateagency.com](http://www.hambleestateagency.com)

## Message from the Clerk

January saw us opening the new look Parish Office which, I am delighted to say, has been well received by those who have been in to see it. In opening the Parish Office, Chair of Hamble Parish Council Sheelagh Cohen stated "I think the new office looks fantastic. It's a symbol of how hard the Parish Council is working to be accessible and outward looking. It's reflected in not only the office but the online payments, RingGo at the Foreshore, the new website and all the other changes that make it easier for residents to contact us and use our services. Better still, the work has been done on a shoe-string; with all the furniture being upcycled." The new space makes it easier to deal with residents in a relaxed setting and to be able to help more than one customer at a time! If you get the chance, come along and see for yourself.

Efforts to make our services more accessible are working. This year, we made the permits for the Foreshore Car Park available online, recognising that many people aren't able to get in to the office during the working week. So far, sixty-seven residents have purchased their permit online and a third of all permits sold are to residents that haven't applied before. There are still 95 available and for a £10 outlay you could benefit from over £1,000 worth of free parking over the course of the year.

Many of you have been asking when the new Mercury Library and Community Hub will be open. There have been a significant number of snagging issues that Eastleigh Borough Council (EBC) have needed to sort out since the naming ceremony in September. Most of these problems are now sorted. EBC are working with Hampshire County Council's School Library Service to get the Library side of things up and running and are aiming for this to be done in time for a March opening. In the meantime, the Parish Council have focused on getting a great team of enthusiastic volunteers in place ready to go when the

building can be handed over.

Citizen Advice Eastleigh will be running a drop-in service on the first Wednesday of each month, starting on 6th February 10-12.30pm and Barclays Tea and Teach will be there on the afternoon of the 13th. There is a waiting list for Tea and Teach so if you want help with digital technology let us know. Barclays will also provide coaching on interview and work readiness if we can demonstrate a need, so again let us know. There have also been discussions with a number of local voluntary organisations about them using the space as well as private businesses. Some of the ideas we are looking at are activities to support carers, creative writing classes, conversational Spanish, GCSE revision and story time, to name a few. Keep watching the website or our Facebook page for more details.

I'd like to send a big thank you to Lily aged 7 and her sister who completed a litter pick, collecting two full sacks of rubbish. Lily also wrote the following:

*"We all know that it is the start of 2019 and its very exciting, but we still need to look after all of our litter because once we have not looked after all our rubbish it will make us poorly. Not just us but also animals. We need to look after animals and all our living things so that we protect our village and the world."*

*Today Tuesday 1st January I went walking near to my house picking up litter with my sister. It was very hard to pick up. In the end we collected two rubbish bags. It is frightening how much litter is out there. This is not just in Hamble as many people will know. Wouldn't it be terrible if Hamble turned into the great Pacific garbage patch?*

*We all need to stop dropping our rubbish on the floor. Please help by spreading these three words, not just you, encourage other people as well. PICK UP RUBBISH!!"*

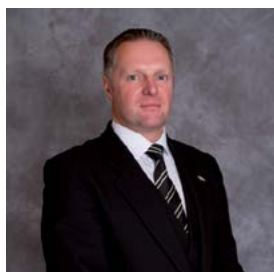


## FUNERALS

are important to **SAY FAREWELL**

and help us to create one

## LASTING MEMORY



Jonathan Terry  
Dip. FD - MBIE - MBIFD

*We are here to help and offer our:*

- Classic Rolls Royce Fleet
- Mercedes Fleet
- Monumental Masonry
- Coffee Mornings
- Bereavement Support Groups
- Golden Charter Funeral Plans

FUNERAL PLANS FROM  
**Golden Charter**  
Smart Planning for Later Life



**Jonathan Terry**

Your Local Independent Funeral Director  
and Memorial Consultant

*Please contact us at any time for help and advice at our offices:*

101 Peartree Avenue, Bitterne,  
Southampton SO19 7JJ

3 College Place, London Road,  
Southampton SO15 2FB

email: [info@jonathanterry.co.uk](mailto:info@jonathanterry.co.uk)

[www.jonathanterry.co.uk](http://www.jonathanterry.co.uk)

**023 8043 4444**

**023 8023 4533**



*Personal and Caring Funeral Services*

## Message from the Clerk (continued)

Lastly, the Council has commissioned a traffic survey for Hamble Lane as part of the HCC Hamble Lane Corridor Survey. The work carried out by HCC so far has focused very much on the Bursledon end of Hamble Lane without much detailed information about journey times for Hamble residents. In the light of this, we have carried out our own. The traffic survey was undertaken between 4th to 10th December 2018 on Hamble Lane enabling an independent review of the background traffic conditions and a comparison to be drawn with the traffic data used for the GE Aviation planning application proposed on Kings Avenue.

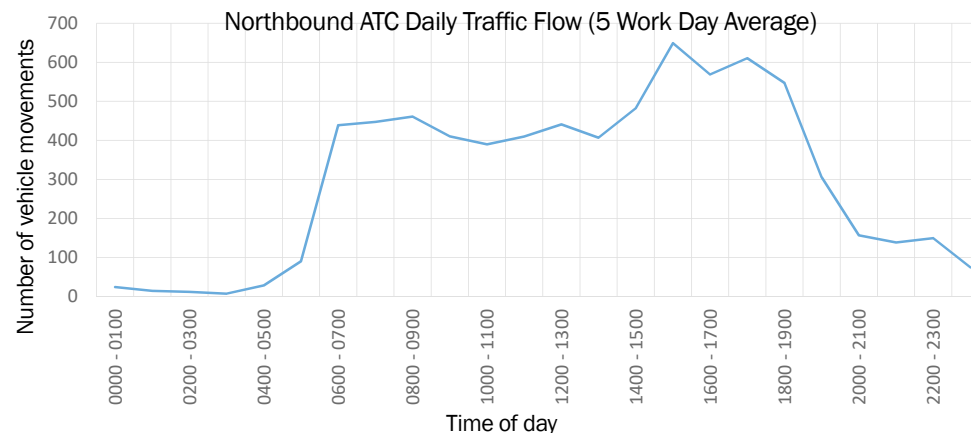
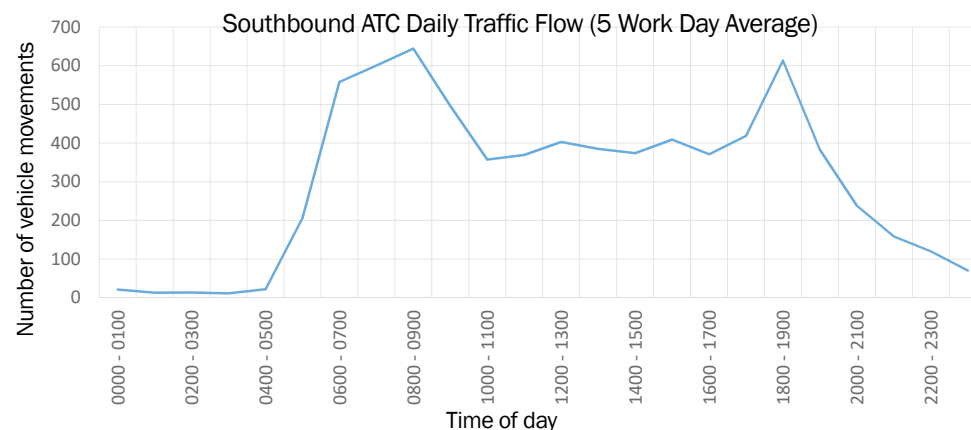
Results shown on the graphs demonstrate

that the traffic on Hamble Lane has extended peak periods in both the morning (06:00 – 1000) and afternoon through to evening (1400-1900).

Peak hour traffic is similar to the data presented in the GE Aviation transport assessment on the southern arm of the Hound Road Roundabout.

Further studies will be undertaken through January to March to support Hamble's residents and identify where improvements can be sought to the local travel experience.

Traffic data from the study also enables informed dialogue with Hampshire County Council and Eastleigh Borough Council on current and future developments and improvement schemes.







**Gecko  
Projects Ltd**

## Property & Garden Services

**Bespoke garden rooms  
Resin Bound Drives & Patios  
Extensions & Alterations**

**07502297779**

**02380199625**

**build@geckoprojects.co.uk**



Find us on

**Checkatrade.com**



*Residential | Respite | Dementia | Day Care*

### **FREE Trial Day Care**

Award winning care provided 24 hours a day

A welcoming and friendly atmosphere

Dedicated and expertly trained staff

Activities and events coordinator

Conservatory and quiet areas for relaxing

Well maintained garden with patio seating

Homemade food and cakes

*The*  
**Gables**  
CARE HOME

13 St Marys Road  
Netley Abbey SO31 5AT  
02380 452324

**www.gables-care.co.uk**



*Top 20 South East care home 3 years running*

## **VOLUNTEER SECTOR VACANCIES**

### **CITIZENS ADVICE EASTLEIGH**

Citizens Advice Eastleigh are looking for a volunteer to help lead their charity, as part of their Board of Trustees.

Alison Sanson, Chief Officer of Citizens Advice Eastleigh says: "We are looking for people who can consider the big picture and who have good independent judgement and useful knowledge and skills.

"You might run a small business or have useful knowledge and skills gained from your work or personal life that you would like to share.

Citizens Advice Eastleigh is a member of the national Citizens Advice charity. This means they have access to the services, resources and support provided by national Citizens Advice but as an independent charity, are responsible for running their own affairs within agreed standards. Citizens Advice Eastleigh have 12 staff and 36 volunteers, a budget of approximately £260,000 and have one main office in the town centre and three outreach locations.

You will need to:

- be available to attend at least four evening meetings each year
- have a willingness to work as a team
- actively participate in discussions that relate to the running of the organisation
- act in the interests of Citizens Advice Eastleigh and that of its staff and clients.

Applications from all sections of the community are welcome to help achieve a diverse trustee board that reflects Citizens Advice clients and communities.

Please contact us for more information or an informal discussion about this trustee role:

Alison Sanson, Chief Officer, 023 80 642699 / [ceo@citizensadviceeastleigh.org.uk](mailto:ceo@citizensadviceeastleigh.org.uk).

Application packs will be provided on request. Closing date for applications – 11th February 2019.

### **HAMBLE PRIMARY SCHOOL**

Hamble Primary School is currently looking for new governors to join our friendly governing body.

The purpose of the Governing Body is to help set and review the school's strategic direction and agree improvement objectives, hold the school's leadership team to account for the educational performance of the school and its pupils and oversee the financial performance of the school making sure public money is well spent.

Our governors come from a range of different backgrounds, skills and experience but all share a common interest of wanting the best possible education for the children in our school.

In looking to fill these vacancies we are particularly interested in applications from people with Finance/Budgetary

experience and Health and Safety/Property Maintenance although please do not be put off if you do not have these skills. What is more important is enthusiasm, interest and the willingness to learn.

For further information please contact the School Office in person or via email at [admin@hamble-pri.hants.sch.uk](mailto:admin@hamble-pri.hants.sch.uk) and a Governor will contact you to answer any questions you have and discuss the application process. Further information can also be found on the Hampshire County Council website at: [www.hants.gov.uk/educationandlearning/governors/volunteer](http://www.hants.gov.uk/educationandlearning/governors/volunteer) where you will find video, e-learning and written information, all of which will provide you with further details about the role.



## Centenary Event Programme

Events marked 'Open Event' are open to non-members for racing and participation in the 'Fun Day'. Other events in the club calendar are for HRSC members or invited guests only. To enjoy all HRSC events please apply for membership.

2019

OPEN EVENT

**Saturday/ Sunday 9/10th March 2019**  
**HRSC Centenary Warming Pan Dinghy Open Meeting**  
Racing for Merlin Rocket, Aero, Foxer and PY classes

OPEN EVENT

**Saturday 23rd March 2019**  
**Junior Warming Pan** for under 18 year-olds. 2 short races am, back for lunch, 2 short races pm. Classes: 'Oppies', Toppers and PY.

OPEN EVENT

**Saturday 18th May 2019**  
**HRSC Centenary Open Fun Day**  
For club members and non-members of all ages

OPEN EVENT

**Friday/ Saturday/ Sunday 7/8/9th June 2019**  
**HRSC Centenary Regatta**  
**Friday 7th - 50+ Day** - Helms and crews to be 50 years or older. Separate class racing for Club Handicap keelboats, XOD class, Foxers, and PY Dinghies. Prizes also for 60+, 70+ etc!  
**Saturday 8th** - Club Junior Racing Day in club boats and PY classes  
**Sunday 9th** - Racing for IRC classes, Club Handicap, XODs, Foxers

OPEN EVENT

**Friday/ Saturday/ Sunday 12/13/14th July 2019**  
**Club Members Cruise-in-Company**

OPEN EVENT

**Saturday 5th October - Sunday 1st December 2019**  
**HRSC Centenary Hamble Winter Series**  
Eight weekends of racing for IRC Classes and Sportsboats  
<http://www.hamblewinterseries.com>

For more information:  
E: [admin@hrsc.org.uk](mailto:admin@hrsc.org.uk)  
Tel: 02380 452070  
[www.hrsc.org.uk](http://www.hrsc.org.uk)

**Saturday 8th December 2019**  
**End of Centenary Prize Giving and Party**  
Celebratory club prize giving and party to close the 100th Anniversary year

100  
YEARS

Join HRSC!

Then. Now. For Future Generations

## PUBLICLY ACCESSIBLE DEFIBRILLATOR AT COOPERVISION

CooperVision are a large employer locally and as part of their commitment to the community, they have installed an automatic external defibrillator (AED) for public use.

This is placed on their security hut in Ensign Way; opposite the Flying Boat Café. The cabinet is locked for security, but should you ever have to use it you can call 999, or ask CooperVision Security and they will give you the access code.

The AED can also be located using the NHS "Save a Life" app for Android or Apple. This



*The AED installed at CooperVision*

public defibrillator has both adult and child pads in the cabinet.

## HAMBLE RIVER SAILING CLUB'S PLANS TO CELEBRATE 100TH ANNIVERSARY

Hamble River Sailing Club (HRSC) will be 100 years old in 2019!

Founded by seven Hamble men to 'encourage the sport of small boat sailing and racing' for the parishes along the banks of the River Hamble. The club has not only honoured this pledge for nearly a century, but over the last 50 years we extended to include yacht racing. To celebrate this momentous milestone, we are planning a series of events and activities throughout 2019 designed to commemorate our achievements, shape our future success and revive the profile of sailing on the River Hamble.

"We are really looking forward to bringing everyone together to reflect on our achievements and inject new momentum into supporting sailing at all levels and for all ages on the River Hamble," comments Stephanie Merry, Commodore at Hamble River Sailing Club. "We have come along

way since our ambitious and humble beginnings in 1919. It is a privilege to have this opportunity – to mark this special occasion, improve club facilities and support a growing talented membership – whether sailing for competitive reasons or just for the fun on the wonderful River Hamble".

Since Basil Lubbock MC stepped down as the first Commodore we have had 27 successors, and on water the club has always been at the forefront, supporting new classes and ideas. With a growing list of achievements, HRSC became one of the premier sailing clubs in the country, most notable in 1972 when six of the 13-man Great Britain Olympic sailing team, who brought back a Gold and Silver medal, were Hamble River Sailing Club members.

The Centenary Event Programme can be found opposite.

## ROOFCARE

- Guttering Repairs: Cleaning / Clearing / Unblocking
  - Fascia boards repainted or UPVC renewal
  - Gutter guards or 'Hedgehogs' fitted
- Main roof repairs: Slates / Tiles / Hips / Ridges / Vents.
- Chimney Repairs: Lead-work replacement / Repointing etc

**NO JOB TOO SMALL: 10% OAP REDUCTION: FREE ESTIMATES**

**Please ring Les: 02381 781 364**

**07931 408 769**



### Dog Walking Services

One hour fun, energetic dog walk, in small groups (maximum of 4 friendly dogs): £10

Second family dog: £7

One hour individual tailor made dog walk: £17  
Home visits to feed / let out / clean accidents: £5

Dog Taxi Service: Need to get your dog to a local Groomer or Vet?

Home visits and taxi service may also be combined with a short walk.

Contact Julie: 07759 307248

Email: [contact@hambledogtrails.co.uk](mailto:contact@hambledogtrails.co.uk)

Webstie: [hambledogtrails.co.uk](http://hambledogtrails.co.uk)

Canine first aid trained. Purpose fitted vehicle.  
DBS Certificate. Fully Insured.

### ADVERTISE IN

**Hamble-le-Rice**  
VILLAGE MAGAZINE

[vmag@hamblepc.org.uk](mailto:vmag@hamblepc.org.uk)

### BERYL'S TEA SHUFFLE

Come and join us for music and a chat!

Thursday 14th February, 1-3pm at  
Hamble Memorial Hall.

£2.50 entry including a cuppa  
and biscuits.

Call 07944 574 344 for more.

## HAMBLE CONSERVATION VOLUNTEERS

We have been giving thought to a programme of tasks for weekends. If this is of interest to you please make contact with us so that we can gauge whether the turnout is likely to be sufficient for the scale of the planned tasks.

Our last task of 2018 was to install bat boxes - built by our volunteers - in Meadows Green copse. The boxes are much larger than bird boxes - they can host hundreds of bats per box - and are sited higher and are easily visible from the Donkey Derby field. All of the UK's bat species are insectivores with a diet made up of moths, flies, beetles and mosquitoes. With one bat capable of eating thousands of insects each night, they play a key role in our environment so we hope we have encouraged them to stay with us.

Our February task is the routine maintenance of our birds boxes. There are now over 50 boxes sited around the Common and the annual maintenance invariably shows that they are popular with the local bird population as it gives them protection from the weather and predators

*Meet 10am Hamble Point Car Park and please wear clothing suitable for the weather on the day. We provide all equipment but welcome contributions to the tea fund. To book your place for this event please contact Philip: 07810 453 138 / [hambleconserve@btinternet.com](mailto:hambleconserve@btinternet.com).*

**[www.hambleconservationvolunteers.org.uk](http://www.hambleconservationvolunteers.org.uk)**



during the breeding season. Regardless of the task we welcome volunteers, the tasks can be arduous but there are roles for a wide range of abilities. Furthermore, we appreciate that many people cannot spare the time for the whole task so please do not be put off if you can only be with us for a short time.

### BEACH CLEANS

6th & 20th FEBRUARY 2019

The next conservation task is on  
13th FEBRUARY 2019

## THE BURSLEDON AND DISTRICT GARDENING CLUB

5th February Natural and Biological controls in the Garden, a talk by Chris Bird.  
Competition A Flowering Stem.

Meetings are on the first Tuesday each month at St. Paul's Church, Oak Road, Pilands Wood, Bursledon SO31 8DT, doors open 7 pm for 7.30 start. Membership £10 from January, Visitors £2 per meeting. Refreshments, Raffle and Topical Gardening Tips. Further information telephone 02380



402986 or 02380 4449245, or find us on Facebook.



## Hamble Parish Council – Budget and Priorities for 2019/20

In January the Council set out its spending plans for the year ahead. The budget includes our costs, sources of income and projects we want to undertake in the following year.

Like any household budget, there is a constant conflict between the things we want to do and the money available. To make sure that we maximising our income we review the things we charge for, which generally includes benchmarking costs against other organisations.

Although we benefit from several sources of income - including allotments, leases, car parking charges and permits, the dinghy park and pitch hire - we are still dependant on Council Tax income. Next year we expect to spend just over £370,000 and as a result our precept (the amount of Council Tax we will be setting) will be £122.36 (the equivalent of £2.36 per week) for a band D property, an increase for the whole year of £2.63, reflecting the increase in costs that we are all facing such as higher utility costs, insurance premiums etc.

### WHAT DOES THE PARISH COUNCIL DO?

Hamble Parish Council is the most local level of government serving a community of around 4,750 people. Much of our work is taken up with managing areas of the village and buildings. This includes:

- Allotments
- Car parks at the Foreshore, College Playing Fields and Mount Pleasant
- Cemetery and burial ground
- Dinghy Storage Park
- Donkey Derby Field
- Foreshore area
- Hamble Lane Community Sports Hub
- Hamble Village Green
- Heather Gardens
- Mercury Creek and Slipway
- Pavilions and playing pitches
- Play areas and skate park
- Public spaces
- Walkways and cycleways
- Westfield Common

### WHAT ARE THE KEY PROJECTS FOR 2019/20?

- Engage with the community about whether to start a Neighbourhood Plan
- Establish the Mercury Library and Community Hub and support agencies and groups to set up new services
- Develop a vision for the Foreshore including replacement benches at the Southern Quay and improvements to the planting scheme
- Christmas Lights at Coronation Parade
- Further improvements to the cemetery
- Dilapidation reports for Roy Underdown Pavilion and Mount Pleasant
- New events on the Foreshore including a twice a year brocante market
- Support a youth strategy and on going support for youth outreach
- To enlarge our community grants pot to support others to provide events and help look after the village

These will be funded by a mixture of our annual budget and our savings referred to as our Ear marked Reserves.



4,750  
Parish Residents  
(approx)



12  
Councillors



6  
Employees - FTE

In addition to the day to day work involved in managing our assets (mentioned opposite), our work throughout 2018/19 has included the following (this list is by no means exhaustive):

- Pre submission EBC Local Plan Consultation
- Traffic and Transport consultation on both Hamble Lane and M27/Windhover improvements
- Planning Applications Consultations: GE and Osborne Quarters (Hound PC Area)
- Planning Appeals: Hamble Station, Satchell Lane, Mallards Road, and the dementia care facility next to the Blackthorn Health Centre.
- Pre-application planning discussions with MDL and Cemex (Gravel Extraction)
- Introducing a water refill scheme to reduce plastic waste
- Grant funding to support: River Hamble Games, Friends of Hamble School, Carols in the Square, Hamble Conservation Volunteers and the Flower Club
- Appointed the community pay back team to undertake maintenance jobs around the village
- Set up the Friends of Westfield Common
- Improvements to the St Andrews Cemetery
- Improvements to the area adjoining the public facilities at the Foreshore
- Set up a dinghy storage park users group
- Gifted a strimmer to the Allotment association
- Supported the final parade of the Mercury Old Boys Association and named the new Library and Community Hub after them
- Recruited a team of volunteers to run The Mercury Library and Community Hub
- Renewed Parish website
- Extended the opening hours and renovated the parish office
- Introduced RinGo and an additional contactless payments machine at the Foreshore Car Park (before the year end)
- Replacement of Bartlett's Field Play Area
- Competition with Hamble Primary School to create signage designed at helping to keep the village clean and tidy

The Council is also talking to both EBC and HCC about options for bringing forward a station car park and, as part of the Local Area Plan, to focus on an air quality strategy and also how to develop public art which is funded from developers contributions.

In addition to these larger projects, Councillors want to encourage and promote smaller initiatives that make a difference to the way the village looks and how people feel about their community. It might be a community led village clean up day, extra bulb planting, setting up a new social group or a scheme to help people get fit and active. There are small grants available to help you get started and from this year the Parish will be looking to celebrate active citizens by putting them forward for civic awards whether they be for local, county or national accolades.

More detail about the budget and our plans for 2019/20 are set out on our website: [www.hambleparishcouncil.gov.uk](http://www.hambleparishcouncil.gov.uk) (under Your Parish Council > Finance)

# G. Grogan Plumbing & Heating Ltd

**Gas Servicing & Central Heating  
Boilers – Installation & Servicing  
Solar – Installation & Servicing**

**DOMESTIC & COMMERCIAL**

**T: 01489 691999  
M: 07887 757979  
E: the.plumber@ntlworld.com**



Helen Joyce D.O.  
Osteopathy

In the comfort of your own home



07594 643500  
helengmjoyce@gmail.com  
helenjoyceosteopathy.co.uk



## Now open in Hamble

- Top quality meats including Pork, Beef, Chicken, Lamb and Game will be locally sourced\* for your satisfaction.
- Traditional sausage recipes including 'Rolle's supreme champions', pork and leek, boerewors...



**Chambers of Hamble**

TRADITIONAL FAMILY BUTCHERS

Opening hours: Tuesday-Friday 8am-5pm, Saturdays 8am-3pm  
6 Coronation Parade, Hamble Lane,  
Southampton, SO31 4JT  
info@chambersofhamblebutchers.co.uk  
Phone 023 8045 4260

\* Sourced as local as possible



- OSTEOPATHY •
- THERAPEUTIC MASSAGE •
- SPORTS MASSAGE •

Assessments & Treatments Available For :

Back pain/sclatica • Neck pain/whiplash  
Joint & muscle pain  
Headaches • Sports injuries

For appointments call Sally on 07803 726173  
sally@hambleosteopath.co.uk  
www.hambleosteopath.co.uk

## LJM BOOKKEEPING SERVICES

- Self Employed/Small Businesses
- Bookkeeping to Trial Balance
- Computerised Accountancy
  - Credit Control
  - VAT Returns
- Preparation of Final Accounts for Sole Traders
- Self-Assessment Tax Returns
  - Payroll

Holiday Cover can also be  
provided for

Hourly Rate Charged

Contact Lynda on 07774 790543  
or Email:  
ljmbookkeepingservices@gmail.com

## IPLAN PROPERTIES

FOR ALL THOSE JOBS AROUND THE HOUSE

BIG JOBS, SMALL JOBS, NO PROBLEM

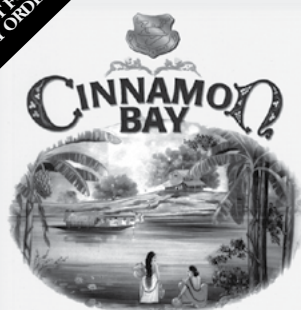
KITCHENS, BATHROOMS, PLUMBING, TILING,  
CARPENTRY, PAINTING & DECORATING,  
ELECTRICS, FLOORING,  
FLAT PACK ASSEMBLY

40 YEARS EXPERIENCE

WE CAN ALSO LOOK AFTER THE  
MAINTENANCE OF YOUR RENTAL OR HOLIDAY  
LET

CALL ROGER ON  
02381 784855 07500 707254  
OR EMAIL  
roger.gunn1@btinternet.com

20%  
DISCOUNT FOR  
TAKE-AWAY ORDERS



**Contemporary Indian Cuisine**

4-7 High Street, Hamble, Southampton SO31 4JE

Tel: 023 8045 2285

Tel: 023 8045 4477

Opening Hours:

7 days a week - 5:30 to midnight

All major credit cards welcome

Free Car Parking

www.cinnamonbayhamble.co.uk  
reservations@cinnamonbayhamble.co.uk

VISIT OUR FACEBOOK PAGE

The  
Luxury  
Paint  
Co.



Matt Emulsion

Special Effect Paint



WWW.AVKOINTERIOR.CO.UK

BOTOX • FILLER • FACIAL PEELS  
CRYOPEN  
(FREEZING SKIN TAGS/WARTS/SUN SPOTS)

**Skin Dr**  
AESTHETIC TREATMENTS  
BY A  
GP SPECIALISED IN  
DERMATOLOGY

Book a Complimentary Consultation to find out more

The Salon, 2 The Square, Hamble  
 02380 458458  
 www.facebook.com/SkinDrClinic  
 skindrclinic@gmail.com

**F.C. HUGHES**  
FUNERAL DIRECTORS

**46 St. Johns Road, Hedge End S030 4AG**  
**Tel: 01489 782404**

- Our staff are at your service 24 hours a day
- Memorial advice and products available
- Funeral Plans Available

• Members of The National Association of Funeral Directors

**Part of Dignity plc.**  
**A British Company**

[www.dignityfunerals.co.uk](http://www.dignityfunerals.co.uk)

**The Gregg Schools**  
Independent day schools for boys  
and girls aged 3-16 years old

[www.thegreggprep.org](http://www.thegreggprep.org)  
[www.thegreggschool.org](http://www.thegreggschool.org)

**DAILY MINIBUS SERVICE  
FROM HAMBLE VILLAGE**

<p><b>The Gregg Preparatory School</b> 17-19 Winn Road Southampton SO17 1EJ Tel 02380 557352 office@thegreggprep.org</p>	<p><b>The Gregg School</b> Townhill Park House Cutbush Lane Southampton SO18 3RR Tel 02380 472133 office@thegreggschool.org</p>
--	---

independent schools council ISI Independent Schools Inspectorate

**Effective treatment  
that triggers immune function to  
accelerate recovery**

**For Aches, Pains,  
Injury; Bone,  
Muscle,  
Tendon damage;  
Stress,  
Tension &  
Depression**

**Call Tasha in the heart of  
Hamble on 07926 876 739**  
[www.alternativepainrelief.co.uk](http://www.alternativepainrelief.co.uk)

**Tasha Ault**  
ALTERNATIVE  
PAIN RELIEF  
— enjoy life free from pain  
CALL: 023 8000 7246

**BenCurtis  
carpentry**

**023 8178 9869**  
**07967 807948**  
**info@bencurtis.co.uk**

• Kitchens • Bathrooms  
• Doors • Flooring

**NO JOB TOO SMALL**

## PREMIERE FOR HAMBLE: THE LAST TALENT SHOW

A world premiere is to be staged in Hamble this Spring, when Hamble Players will debut 'The Last Talent Show.'

Hamble resident John Quinn has written the comedy/drama with The Players especially in mind. It tells the story of a national talent show that is struggling to find great acts or, even, an audience.

Finally, near bankruptcy forces the organiser to move the talent show's grand final from London's O2 to The Memorial Hall in Hamble, with amazing and amusing results!

John, who wrote the play with colleague Barrie Tracey, said: 'We hope everyone will agree that "The Last Talent Show" is great fun, with lots of action, comedy and pathos. The play examines the cost people are prepared to pay for their 15 minutes of fame, and also the unexpected demands celebrity makes on them, but it's never far

from drawing a gasp or raising a smile.

'I've been a fan of Hamble Players for many, many years so I jumped at the chance to work with them. The play has a large cast and is technically challenging for the backstage crew, but everyone has embraced the play enthusiastically.'

'The Last Talent Show' runs from April 9th to the 13th and tickets go on sale from February 1st. There have been theatrical productions staged in Hamble since 1920 and the Hamble Players have been delivering great amateur theatre since 1955!

Photo of John Quinn, in colour and B&W, attached.

Any queries please contact John on 07736 149410.

Hamble Players website is [www.hambleplayers.org.uk](http://www.hambleplayers.org.uk)

## NEW WOMEN'S INSTITUTE PLANNED

Following on from the success of the evening Women's Institute, a new daytime WI is being planned for Netley Abbey – and Hamble ladies will be more than welcome to attend.

The first meeting is taking place at 1.30pm on Wednesday, 6 February in St Edward's Church Hall, Grange Road, Netley Abbey, SO31 5FF.

If you are unable to attend this meeting but are interested in finding out more, please contact 02380 458411 or email [NetleyAbbeySec@HampshireWI.org.uk](mailto:NetleyAbbeySec@HampshireWI.org.uk)

A spokeswoman for Netley WI said, 'Joining the Women's Institute is a great way to make new friends, hear some fascinating

speakers, learn new skills, go on outings and really get involved in your local community.

'In some parts of the country, GPs are even prescribing WI membership to their patients to help combat loneliness.'

As well as regular monthly meetings, WIs can also organise sub groups who take part in reading, walks, crafts, outings or any other activity which members would like to enjoy together.

If this appeals to you, do come along to the meeting on 6 February or use the contact details opposite to find out more information.





Expert building and windows, all you need under one roof

With a **100% customer satisfaction** rating last year for windows, doors and conservatories

This **reliable local family** run firm has 20 years experience in the building trade and offering a high quality finish. Services include:

*Extensions and New Build  
Windows, doors and  
conservatories (with 10 years guarantee)  
Decoration and Maintenance*

No job is too small, please contact us for a friendly, honest, value-for-money quote and advice

**01329 237715**

[www@kijnhomeimprovements.co.uk](http://www@kijnhomeimprovements.co.uk)



**R&M**

Proud members of  
**Checkatrade.com**  
Where reputation matters

## PROPERTY MAINTENANCE LTD

All External and Internal work undertaken

Specialising in:

- All aspects of Roofing
- Pitched/Flat roofs
- Slate, Tile & Lead work
- UPVC Facias and Guttering
- Roof Windows
- Brick work including Chimneys & Re Pointing
- Patios & Decking
- Laminate & Hardwood Flooring

- Fully Insured
- Trading Standards Approved
- Member Of Checkatrade
- Free Quotations
- Friendly & Reliable

With over 25 years of experience within the Construction Industry

Contact Ray on: **07757 808 290**  
Or Email: [randmpropmain@talktalk.net](mailto:randmpropmain@talktalk.net)

## HAMBLE-LE-RICE FLOWER CLUB



The January 14th meeting was a Tea Party which has become a regular favourite with members. During a tea of delicious food, three of our members did inhouse demonstrations. Christine Wright did a tied bunch. Judy Raponi did a top table long arrangement, and Sheila Barker did a set of three glass vases with a selection of assorted flowers. The common thread was that all designs were suitable for a wedding. Everyone enjoyed the afternoon and all the 39 members attending looked very smart as everyone wore a hat. Just like Ascot! A very popular event in our calendar.

### Monday 11th February

A practice day with the title "tranquil Waters" a day when members can bring flowers etc and use their imagination to create something wonderful. We look forward to some stunning designs.

### Monday 11th March

Our AGM is on Monday 11th March starting at 12 noon for lunch followed by the Annual General Meeting. This must be booked in advance by phoning Judy (details below).

The Beginners Classes are really popular. They are on the third Monday of the Month and anyone interested should contact Sheila Barker or Judy Raponi.

*The Hamble Le Rice Flower Club consists of a friendly group, mainly but not exclusively of ladies, who meet on the second Monday of each month at 2pm in the Hamble-Le-Rice Memorial Hall.*

Visitors welcome at all Club events, just turn up or if you require more details/tickets:

Valerie Pritchard, Chairman: 02380455952

Sheila Barker, Vice Chairman 02380453718

Rosemary Dorman, Secretary: 02380452385

Judy Raponi, Treasurer: 02392554157

## HAMBLE LADIES GROUP

I know we are already in the month of February but I would still like to wish everyone a Happy New Year and hope 2019 has been good to you all so far. There are a few things to let you know about to bring us up to date as to what we have been up to.

In November 2018 we were entertained by Bishops Bells. A very friendly group of ladies who came along to play their hand bells for us. The group started over 30 years ago and they told us how much they love playing and regard it is a form of therapy meeting once a week.

Bells are one of the oldest musical instruments, small portable bells based on the design of the tower bell. A very popular national instrument and they meet up with other local groups and once a year attend a National Rally. Bell ringing is played world wide although not so popular in Europe for some reason.

The group played a selection of tunes which we thoroughly enjoyed and some of our members were invited to have a go which we were pleased to do. It was not as easy as we thought it would be but a lot of fun. After a bit of practice we actually managed

"Attention Club Members"

## HAMBLE CLUB

BEAULIEU ROAD, HAMBLE  
Telephone: 8045 2213



**THE FAMILY CLUB**  
Membership Available

- LIVE MUSIC
- BINGO - Wednesdays, Sundays
- Small/Large Function Room Available
- Catering can be arranged
- showing all your favourite games on Sky Sports
- Free WiFi

## BADGER CLEANING SERVICES

### Carpet & Upholstery Cleaning

A Hamble based Company  
specialising in cleaning  
carpets and upholstery



Please phone for a quote.  
**023 8178 7229 / 07780 652933**



## SOLENT GARDEN SERVICES LTD

ESTABLISHED 1973

[www.solentgardenservices.co.uk](http://www.solentgardenservices.co.uk)

Based in Hamble since 1973

**Tel : 07787594682**  
**Email : robwoodh01@msn.com**

- Garden Maintenance
- Regular Mowing
- One Off Mowing
- Tree Surgery
- Hedge Cutting
- Fencing
- Landscaping
- Design Service

Proud members of  
**Checkatrade.com**  
Where reputation matters



## Need a local venue for your party?

60 People Capacity  
Up to 4 Hours Only £35  
LARGE FREE CAR PARK

**THE ROY UNDERDOWN PAVILION, HAMBLE**  
The perfect spot to meet indoors or outdoors

Call 023 8045 3422 or email [asstclerk@hamblepc.org.uk](mailto:asstclerk@hamblepc.org.uk) to book your hire

**PARTIES - CLASSES - MEETINGS - BBQs**

## HAMBLE LADIES GROUP (continued)

to make quite a good sound. Another successful evening.

Our Christmas dinner in December was, once again, held at the Beach Hut where we have been going now for the last few years. Why would we want to go anywhere else when we get so well looked after by Phil and his team who once again made our evening very enjoyable. Good food, good venue, good service and good company with all our ladies who support our group year in and year out. A perfect start to the festive season. By the way we have booked in for next year and yes Phil does know. Our AGM was held in January - a cold evening but we were pleased to see so many members turn up all eager to join again. The Committee was voted in again to carry on for another year and the programme for the next 6 months was handed out.

Our next meeting is on Tuesday 12th February when we have Peter Ashburn coming along to talk to us about 'Wild Orchids'. Everyone is welcome to join us - we are a very relaxed and friendly group. Our meetings start at 7.30pm and are held in the Priory Centre in Hamble. Just to let you know our programme until June 2019:

### Tuesday 12th March

Hampshire Search and Rescue

### Tuesday 9th April

Creative Paper - Debbie Phillips

### Tuesday 14th May

Child Exploitation - Acting Police Sgt Antony Waghorn

### Tuesday 11th June

Social Evening - Possibly Race Evening?

Looking forward to catching up with you all in February - Bobby Conduit.

## HAMBLE LOCAL HISTORY SOCIETY

At the Society's next meeting Warsash local historian and author, Bryan Woodford, will be giving an illustrated talk about the important aspects of the village's riverside activities over the past centuries.

In the early 1800s its men were building Royal Naval ships and later working in the crab & lobster trade. The coastguard was based at Warsash and its cottages became part of the School of Navigation. During the Second World War HMS Tormentor played an important role particularly during D-Day. These are just a few of the riverside activities that Bryan will recall and the ferry and Warsash Sailing Club will not be missed out.

Why not come along and find out what was happening over the years at Hamble's neighbouring village on the opposite side of the river? Bryan will also have his new book



Crab & Lobster boat on Warsash Hard

'Warsash Past & Present' available for sale at the meeting.

This meeting will be at the Roy Underdown Pavilion on Thursday 7th February at 7.30pm. New members and visitors are always welcomed! The cost is £2 a meeting. If you would like more information please contact the Society's Secretary, Janet Flack, telephone 8045 7189.





**EVERYONE CELEBRATE!**

# HAMBLE SPORTS COMPLEX FAMILY OPEN DAY SATURDAY 9TH FEBRUARY 2019

**VISIT OUR NEW AND IMPROVED FACILITIES!**  
**EXERCISE CLASSES • GYM CHALLENGES • FAMILY SWIMMING**  
**KIDS ACTIVITIES • SPECIAL GUESTS • EXCLUSIVE OFFERS**

A fun day of free activities and events for all ages, visit  
[www.everyoneactive.com/HelloHamble](http://www.everyoneactive.com/HelloHamble) to find out more!

**Hamble Sports Complex**  
Satchell Lane, Hamble SO31 4NE  
023 8235 2508

**everyone**  
**ACTIVE**

## FROM THE COUNCIL'S RECORDS

**100 YEARS AGO - Allotments** The Chairman reported handing to the Clerk £22.26 Allotments Rents he had collected ... **FEBRUARY 1919**

**75 YEARS AGO - Letter of Distress** ... a very long pathetic letter ... setting out the sad position in the lose of his Wife, who left a Son 7 years of age, who was left with no one to take care of him as his father was in the Air Force and under the circumstances he had applied for his release and to be transferred to Folland Aircraft who was willing to employ him so he could look after his Son. He appealed to the Parish Council for their help and to join with others to use their influence with the Air Ministry to relieve his distress...

**FEBRUARY 1944**

**75 YEARS AGO - Yachting Developments in Hamble River** A letter was read from Mr D Sessions stating that at the last meeting of the Hampshire Town Planning Committee ..... plans were put before them in connection with a Yacht-Centre Scheme at Hamble which has been originated by the writer and his partner Mr J Mathers ... **FEBRUARY 1944**

**50 YEARS AGO - Satchell Lane** .... a complaint raised by the W.I. in respect of water which runs down from the Aerodrome onto Satchell Lane, they wish to know what the Parish Council can do about it. It was agreed to write to the County Council asking that attention be given to this ... **FEBRUARY 1969**

**50 YEARS AGO - Southampton Water Rescue Boat** Councillor Robinson said that as the outcome of a letter received from Dr Tees on the question of providing a rescue launch based on Southampton Water, he would shortly be calling a meeting to explore the possibilities of having an inshore rescue boat stationed at Hamble on Southampton Water Foreshore ... **FEBRUARY 1969**

**25 YEARS AGO - Planning Applications** Outline: construction of 20 no. 2-bedroom, 4-person social housing units with associated roads and car parking facilities ..... That the Parish Council submit the same observations as previously, in total opposition to the application ..... to try to obtain the Cabbage Patch for public ownership ... **FEBRUARY 1994**

**25 YEARS AGO - 100 Anniversary HPC Working Party** ... to accept the recommendations of the Working Party in principle ..... That the following form the basis of the programme to mark the Centenary of the Inaugural Meeting of Hamble-Le-Rice Parish Council ... **FEBRUARY 1994**

THE ABOVE IS AS RECORDED IN THE ARCHIVES (IMU)



## DATES FOR YOUR DIARY IN FEBRUARY

Wednesday 6<sup>th</sup>

### Citizens Advice Drop-in Sessions



10am-12.30pm,  
The Mercury Library and  
Community Hub

Thursday 7<sup>th</sup>

### Hamble Local History Society

Bryan Woodford, will be giving an illustrated talk about the important aspects of the village's riverside activities over the past centuries.

See page 23.  
7.30pm, Roy Underdown Pavilion

Monday 11<sup>th</sup>

### Hamble-le-Rice Parish Council Meetings

All Council meetings are open to the public to attend.

7pm, see published agenda for location

Thursday 14<sup>th</sup>

### Beryl's Tea Shuffle

Join Beryl and Sue for some tunes and chat. Call 07944 574 344 for more.  
1-3pm, Memorial Hall

Saturday 16<sup>th</sup>

### Charity Fashion Show

Fashion Show, Raffle and Disco supporting The Christie Charitable Fund. Tickets £20 at: [www.aboutgivingback.co.uk/events](http://www.aboutgivingback.co.uk/events)  
7.30-11.30pm, Victoria House

Wednesday 20<sup>th</sup>

### Love Your Coast

A free community event in conjunction with 'Solent Bird Aware' and 'Countryside Canines'. Learn about the nature on your doorstep and how to protect it. FREE but normal parking charges apply.

11am-3pm, River Hamble Country Park (Barnfield Site)

Thursday 21<sup>st</sup>

### Sally the Limpet: Storytime and Seashore Safari.



Suitable for up to 7yr olds. Includes a drink and biscuit. All children must be accompanied by an adult (free tea/coffee). Wear warm clothing, a hat and sturdy footwear. Spaces are limited so please book in advance by visiting the shop or phoning 023 8045 5157 (10am - 2pm). Normal parking charges apply. £6.50. Royal Victoria Country Park.

Monday 25<sup>nd</sup>

### Hamble Parish Planning Committee Meeting

7pm, see published agenda for location.

Listing of an event does not constitute endorsement. Details believed to be correct at the time of publication.



## Regular Events

Weekly	What	Where
Monday	<b>Monday Club</b>	1.30pm, Hamble Club
Monday (except Bank Hols)	<b>Hamble River Singers Community Choir</b> (Contact <a href="mailto:basschickbev@gmail.com">basschickbev@gmail.com</a> )	7.30pm, HRSC Rooms
Monday	<b>U-Tone Circuit Training</b>	8.15-9.15pm, Memorial Hall (Rear Hall)
Monday (except Bank Hols)	<b>Forever Fit:</b> 60+ fitness exercise to music. 4 week block £16. (Call Julie: 07952 983 349)	10.30 - 11.30am, Follands Sports & Social Club.
Tuesday	<b>Parent &amp; Toddlers Group</b>	9.30-11.30am, Memorial Hall
Tues & Thurs	<b>Pilates</b>	(Tues 12-1pm) (Thurs 10-11am) Memorial Hall
Tuesday	<b>Puppy Classes</b> (contact Annette 023 8045 3490)	6-9pm, Memorial Hall
Wednesday	<b>Yoga</b>	10-11.30am, Memorial Hall
Wednesdays & Fridays	<b>Fantasy Allstars Cheerleading Classes at Hamble Sports Complex</b>	6-8pm Wed (12+), 5-6pm Fri (3-8years), 6-7pm Fri (9-11years)
Wednesday	<b>Chairfit:</b> 60+ Seated exercise to music. 4 week block £10. (Call Julie: 07952 983 349)	11.15am-12pm, Roy Underdown Pavilion.
Wednesday	<b>Cherubs</b> (Contact: Father Graham Whiting 023 8045 2148)	10.30am - 12pm, St. Andrews Church.
Wednesday	<b>Acting Up</b> For class times contact: 07519 754829	Memorial Hall
Thursday	<b>Walking Netball</b>	10-11am, Hamble Sports Complex
Friday	<b>Village Market</b>	Memorial Hall, 9.30-10.45am
Bi-Weekly	What	When
Tues 5 <sup>th</sup> & 19 <sup>th</sup>	<b>St. Andrew's Cafe @ The Priory Centre</b>	10.30am-12.45pm
Monthly	What	Where
2nd Monday	<b>Hamble Flower Club</b>	1.30pm, Memorial Hall
4th Monday	<b>RAF Association Ichen &amp; Hamble branch</b> (Contact: Steve Rawlings 02380 740771)	12pm, Hamble Club
1st Tuesday	<b>Bursledon and District Gardening Club</b>	7pm, St Pauls Church, Bursledon
2nd Tuesday	<b>Hamble Ladies Group</b>	7.30pm, Priory Centre, St Andrew's Church
1st & 3rd Weds	<b>Hamble Conservation Beach Cleans</b>	10am, Hamble Point Car Park
2nd Wednesday	<b>Hamble Conservation Task</b>	10am, Hamble Point Car Park
4th Wednesday	<b>Informal Bereavement Support Group</b> (Contact: Heather Smith 02380 452998)	2pm-4pm, The Priory Centre
Last Saturday	<b>Place 2B Café</b> (Coffee, Cake & Conversation)	10am-12pm, Priory Centre

## **BERYL ROGERSON MEMORIAL LUNCH**

The next luncheon February 28th at 12.30 pm at the Memorial Hall

All parishioners who are over 70 (and their spouses) are welcome to this happy and friendly event. A two-course hot meal served with wine/fruit juice, coffee/tea and mints. Raffle and entertainment.

Transport available for those who need it. The Hall is fully accessible.

**CLOSING DATE FOR APPLICATIONS, FRIDAY FEBRUARY 15<sup>TH</sup>**

Because of the increase cost of catering we may in future only be able to have one lunch each year instead of two. The original fund of £4500 was spent many years ago but we have been able to keep going because of regular donations from BP, Coopervision, Exxon Mobile, as well as one off donations from many other local wellwishers including Hamble Parish Council. We keep the price of tickets as low as possible to make it affordable to everyone. We send our grateful thanks to those companies that have supported us over the years and hope that they can continue to do so.

Kathleen Hand Hamble Village Memorial Hall



### **Application Form**

**THE BERYL ROGERSON MEMORIAL LUNCHEON      February 28<sup>th</sup> 2019**

Name(s).....

Address.....

Telephone.....

I enclose £ ..... (£6 per person). Please pay with **cash**, we pay bank charges on cheques

Do you require transport? (please tick)    Yes ☐    No ☐

Special dietary requirements? .....

Please send this form, with your money to the Parish Office or Coronation Parade Post Office  
**Closing date February 15th**

Please write your name and address on the outside of your envelope.  
**Arrive between 12 and 12.30pm.**

**THE BUGLE**  
HISTORIC WATERSIDE PUB

*Traditional village pub home to  
locally sourced cuisine*

**BOOK NOW 023 8045 3000**  
[WWW.BUGLEHAMBLE.CO.UK](http://WWW.BUGLEHAMBLE.CO.UK)





I need to rent  
somewhere bigger...

“ NO DEPOSIT?  
NO PROBLEM! ”

L | LEADERS

Find out more  
by calling us on  
01489 858 347

[leaders.co.uk](http://leaders.co.uk)