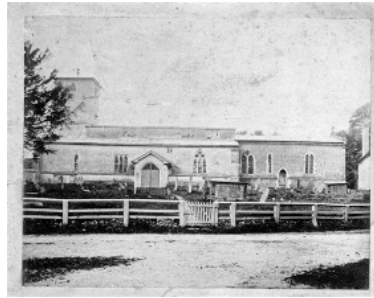




Church & village from Hurstbourne Hill [pc]



Church c1890



Church Street - c1940



Church Street - 1940's



Church Street c1900



Church Street c1920 [pc]



Church Street c1955



Church Street 1960's [pc]



Church Street 1963 [pc]



Church Street 1964 [pc]



Church Street c1915 [pc]



Church Street late 1950's [pc]



Church Street Sept 1963 - Mrs Raynsford & Gillian Raynsford [pc]



Hurstbourne\_Tarrant\_postcard - Lower Farm



Old Well Cottage, Church Street [pc]



Parsonage Farm 1960's [pc]



Parsonage Farm 1 [pc]



Parsonage Farm 1920's [pc]



Parsonage Farm 1960's [pc]



Parsonage Farm c1960's [pc]



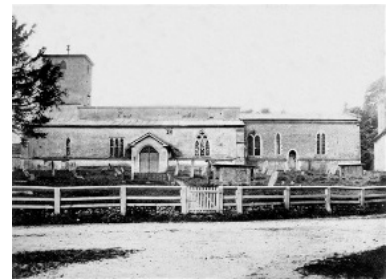
Parsonage Fram & The School c 1910 [pc]



School & Parsonage Farm c1929



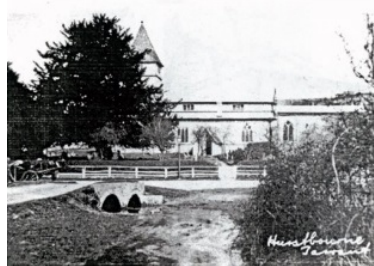
Shepherd's Peace, Church Street  
[see comments] [rs]



St Peter's Church - c1895 a



St Peter's Church & the original  
Vicarage - c1900



St Peter's Church c1900



St Peter's Church from Parsonage  
Farm paddock - Mar 2010 [pb]



St Peter's Church HbT Mar 2009 [pb]



The Church - Christmas Service [pc]



The Church & the school toilet block 1965 [pc]



The Church from lower Hurstbourne Hill c1930 [pc]



The Plough Inn & Mary J Ford [Proprietor]



The Village School & Parsonage Farm c.1930's [pc]



The Village School c 1925 [pc]



The Village School c1910's