

# Planning the Direction of Travel for the future growth of Wealden

HOW WE respond to global issues, like climate change, and local issues like the lack of affordable housing, will be highlighted in the Wealden *Local Plan Direction of Travel Consultation*.

The consultation will run until Monday 18 January. You can [take part in the consultation online](#)

“This consultation is about much more than how many houses we should build and where they should go,” said Cllr Ann Newton, Cabinet member for Planning and Development.

“We are committed to making Wealden carbon neutral by 2050, if not sooner. As nearly half our CO<sub>2</sub> emissions come from transport, the future will have to embrace a major shift towards



sustainable transport including electric vehicles.

“Affordability is another major issue. Average house prices in Wealden have increased by 17% since 2015. This is now 11.5 times the average working person’s income for the District.

Although last year 273 affordable homes were built, including 61 by Wealden District Council, these still only represent 26% of all the new homes built in Wealden.

“Less than 4% of Wealden’s area is currently developed.

“We are working with Government

to ensure that our housing requirement serves the needs of our communities, and that growth takes into account the constraints on development in Wealden.

“Despite best efforts, development has failed to keep pace with our housing targets in the past.



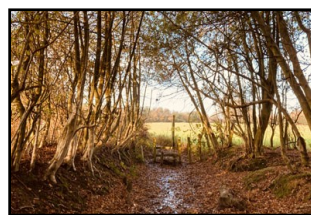
This allows developers too much freedom to oppose our planning decisions on

appeal until we get a new plan.

“The new Wealden Local Plan should be adopted by the end of 2023, providing a framework for the next 15-20 years.

“We expect changes in national planning policy during this time, and we will ensure our new plan implements these.

“One of Wealden’s greatest assets is its natural environment. We want to protect our landscapes and enhance existing biodiversity through the creation of green spaces, new water resources and



establishing a green infrastructure network.

“The Local Plan will enable us to bring forward other infrastructure improvements including transport, schools and health.”

## Themes to be considered:

- ➔ Tackling climate change, achieving carbon zero outputs, improving air quality.
- ➔ Ensuring that growth and change is supported by infrastructure delivery to meet the needs of our communities.
- ➔ Delivering the right type of homes, in the right location and to a high standard to meet local need.
- ➔ Supporting local businesses, increasing jobs and ensure a thriving, diverse and a locally sustainable economy.
- ➔ Improving our existing tourism offer and increasing visitor spend.
- ➔ Supporting and regenerating our town and local centres by attracting the right investment and creating vibrant places that provide for our community’s needs.
- ➔ Protecting and enhancing our natural environment and increase biodiversity and the quality of our green and blue spaces.
- ➔ Protecting our high quality landscapes, our heritage and cultural assets.
- ➔ Delivering high quality places through design, accounting for local character and distinctiveness.
- ➔ Helping our communities to thrive, living safe, inclusive and healthy lives.

# Residents encouraged to take part in energy-savings improvement scheme

WEALDEN is encouraging residents to take advantage of the Green Homes Grant Voucher scheme to reduce their carbon emissions and make energy efficiency improvements to their homes.

The Government scheme offers up to £5,000 of grant funding towards installing low carbon heating and insulation measures that will help improve energy efficiency. Vouchers last for three months once issued. The scheme will finish on 31 March 2022.

All homeowners and landlords, regardless of income, can apply for vouchers worth up to £5,000. This will cover two-thirds of the cost of

the improvements to their properties. Residents receiving benefits may be eligible for additional funding of up to £10,000, covering 100% of the costs.

To benefit from the scheme, it is important to install at least one *Primary Measure*.

These include:

- Replacing a fossil fuel heating system with a low carbon heating system such as heat pumps.
- Solar thermal panels or biomass boilers.
- Roof, loft, wall, and floor insulation.

As long as a *Primary Measure* is included, funding can also be used on *Secondary Measures*

to upgrade windows and doors, install draught proofing or improve heating controls. Funding for *Secondary Measures* is capped at a maximum value of the primary measures installed.

All work must be completed by a [Trust-mark-registered installer](#).

Visit [the Simple Energy Advice website](#) or call 0800 444202 for more information and to see what measures you could install.

The East Sussex Energy Partnership has secured limited additional funding to provide a package of measures for residents who have a household income of less than £30,000 a year, own their own homes and have an



Energy Performance Certificate (EPC) rating of E, F or G.

Residents who meet these criteria should phone Wealden's Home Energy Efficiency Officer on 07985 878631 to find out more.



## Partnership approach is the way to expand EV charge points area

emergency, we must do more to encourage electric vehicle technology."

Wealden is one of the biggest districts in the South East but, as a largely rural area, commercial investment in public EV charging infrastructure has been slow. This leaves it at risk of lagging behind in the EV transition.

However, the District Council owns and operates 36 public car parks, some of which could be used to provide EV charging points.

There are currently 17 publicly accessible car-charging connections across eight locations in Wealden.

"Looking to find private sector partners to share both the revenue and the risks involved in expanding the EV charging network in Wealden is the best way to proceed," said Cllr Galley. "It will also enable us to seek grant funding for areas where charge points won't initially be commercially viable, and help us keep on top of the latest technology."

Wealden has begun exploring partnership options with private sector organisations to expand the EV charging network, working with neighbouring councils where possible. It will pursue the grant options available through the Office of Low Emission Vehicles.

THE District Council is looking for business partners to expand the network of electric vehicle (EV) charge points across Wealden.

"Vehicle emissions are the biggest contributor to global warming in Wealden," said Cllr Roy Galley, Cabinet member responsible for economic development. "They account for nearly half our CO<sub>2</sub> emissions. In our response to the climate

# Shop & Dine Well in Wealden



THE *Shop & Dine Well in Wealden* campaign will seek to reassure people that their high streets are safe places in which to visit, shop and enjoy leisure time while adhering to Government rules and guidance.

It follows a District-wide consultation in 16 Wealden locations involving Town and Parish Councils, local Chambers of Commerce and community groups.

The *Shop Well in Wealden* marketing campaign is now being rolled out to these 16 locations to drive footfall to local High Streets and shops.

It includes a public information campaign to ensure people are aware of safety measures being taken by high street businesses and a digital campaign to promote independent retailers and eateries when open to the public.

The *Shop & Dine Well in Wealden* campaign runs until the end of March 2021. It is funded from Wealden District's allocation of Re-opening High Streets Safely (RHSS) fund awarded by the Ministry of Housing, Communities and Local Government (MHCLG)

from the European Regional Development Fund (ERDF).

The funding has also enabled the Council to recruit two new information officers who will provide health and safety advice to retailers and hospitality businesses as the pandemic continues.

Councillor Roy Galley said: "We recognise that our high streets and neighbourhood shopping areas are under threat.

### Distinctive hubs

"From Crowborough to Pevensey and everywhere in between, Wealden's towns and villages are distinctive hubs for community life, so we must act now to help them adapt in these challenging times.

Prowse & Co is delivering the project on behalf of Wealden District Council. Managing Director Joanne Rogers, a member of the National High Streets Task Force, says the pandemic has created a perfect storm for high streets. It has already impacted by ecommerce and changing consumer habits.

"The Covid pandemic threatens the distinctive

nature of Wealden District's town centres, not least because of the high proportion of vulnerable independent businesses.

### Social cohesion

"Yet these play a broader role than shopping or dining and supporting jobs. They bring social cohesion to communities and are reflective of local heritage and identity - the very things that make Wealden such a wonderful place to live, work and visit."

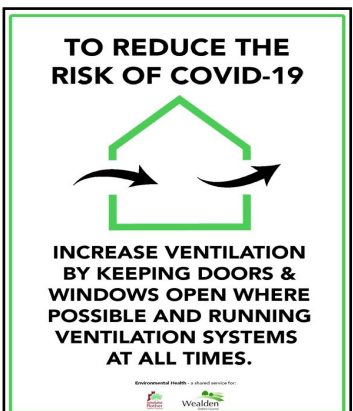
Over the longer term, it is hoped that a series of actions carried out through the campaign will promote local trade and its positive benefits for the wider prosperity of the District, including the visitor economy.

## Five extra Information Officers

FIVE more Information Officers will be helping provide reassurance for Wealden's shops, restaurants, pubs cafes and businesses from December.

They are being funded by a £60,000 Government's Covid Marshalls grant.

The latest information about business compliance with regard to local restrictions can be found on the [Covid-19 pages](#) of the Wealden website.



## Take-away reassurance

We have updated [our public register](#) of trading food businesses across Wealden and Rother. This includes contact details and food hygiene ratings.

We have added further to the range of posters for local businesses to help their staff and customers remain safe while the pandemic continues. These take into account of the latest precautionary advice such as the need for good ventilation.



# Joint initiative to improve community health services



“Working in partnership with the parish council, we will replace the outdated village surgery whilst the Parish Council will provide community facilities in a new hall next door. These are integral to the modern day health hubs.”

WEALDEN’S Cabinet has agreed to work with Mayfield and Five Ashes to create a combined community and health centre for the village.

Funded by both councils, it would involve a new GP surgery linked to a new hall on the site of the existing memorial hall. It could be ready for spring 2023.

“We set great importance on improving the health and well-being of our residents,” said Councillor Bob Standley, Leader of Wealden District Council.

“The importance of social prescribing in tackling health issues has been highlighted nationally in the Herstmonceux health coach project.

“The Mayfield and Five Ashes initiative will put community activities alongside health services. Keeping active is a key part of wellbeing. Having social activities on hand can help tackle rural issues like isolation and loneliness.”

Mayfield’s existing surgery is too small to meet the village’s growing population and an up-

grade is needed in order to meet NHS standards.

The East Sussex Clinical Commissioning Group has indicated its support for the project. The parish council will be helping renew the community facilities which have been provided by the memorial hall for the more than 60 years.

In a survey carried out by the parish council, 76% of respondents supported the idea of a combined health and community facility.

Wealden’s Cabinet has agreed to work in partnership with Mayfield & Five Ashes Parish Council and East Sussex CCG to further assess the viability and design of the scheme and carry out further consultation. A project board, led by elected representatives, will be set up to oversee the scheme.

## A roof over the head for rough sleepers

THROUGH our Rough Sleeper Initiative we’ve been offering temporary accommodation to anyone sleeping rough in Wealden and working with them to find a longer term home.

Alongside our partners Southdown Housing, we closely monitor the number of people sleeping rough in Wealden.

If you’re concerned about someone who is sleeping rough, please let us know via <https://www.streetlink.org.uk/>

Using this referral route means our dedicated team of specialists can offer support and keep track of anyone returning to sleeping rough and monitor who is new to the area.

If you are a landlord with a property to let, please get in touch – our housing team work closely with

tenants and landlords to build up strong relationships and secure tenancies.

More information about the services provided for people who are homeless can be found on the [Housing Options pages](#) of the Wealden website.



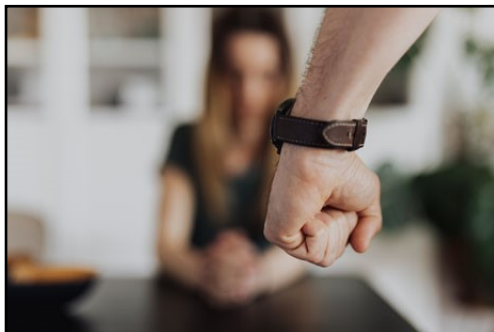
# We need to speak out about domestic abuse



WEALDEN residents are being urged to speak out against all forms of domestic abuse as the number of recorded cases over 12 months exceeds 1,000 for the first time.

From November 2019 to October 2020, Sussex Police received 1,037 reports of domestic abuse, which is a 4.5% increase compared to the same period last year.

“We need to be much more open about this problem in our homes,” said Councillor Philip Lunn, Wealden Cabinet member for Community and Public Health.



“Lockdown has undoubtedly added to the pressures faced in some relationships.

“Wednesday November 25 is White Ribbon Day. It is the day when every man or boy over the age of 14 is asked [to promise](#) to never commit, excuse or remain silent about male violence against women. Wealden District Council was awarded White Ribbon status in 2016 and I am pleased that we are applying for re-accreditation this year.

“Lockdown can make it very difficult if someone is living with their abuser. As well as violence, the threat may come from emotional or financial abuse, or other forms of controlling behaviour or sexual intimidation. It can show itself in ceaseless verbal criticism, removal of individual choice, isolation, or by stopping access to money or taking away a mobile phone. It is so important

that home is a place where everyone is safe. Men and boys can also experience domestic abuse.

“In many cases people are unaware they are the abuser. Self-awareness is so important. Thanks to the White Ribbon campaign, more people have become willing to talk about these issues.”

Support for women and men are at risk from domestic abuse and violence in East Sussex is available from the Portal <https://theportal.org.uk/>. It runs a 24-hour domestic abuse helpline on 0808 2000 247. The Portal provides information for friends and family who may be concerned about a colleague or family member. You can also call Sussex Police on 101. In an emergency, ring the Police on 999.



EAST Sussex College is committed to helping local communities across Wealden, recover from the Covid-19 crisis.

Start a new career or level up your existing skills with free online courses. These include:

- Understanding Safeguarding & Prevent.
- Understanding Behaviour that Challenges and Understanding.
- Specific Learning Difficulties.

Further details are available on [the college website](#).

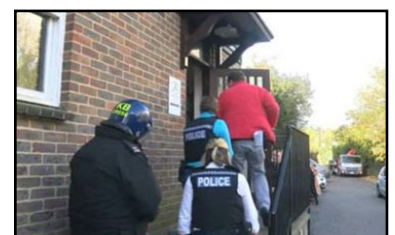
## Safeguarding and slavery are issues in Wealden

WEALDEN District Council has produced some handy purse / wallet-sized cards containing helpful information about safeguarding and modern slavery issues.

Earlier this year the Council updated its adult and child protection policies. The card, which can fit in a mobile phone case, wallet or purse, contains key contact details of the services that can provide assistance.

Local councillors and clerks may see or hear something when out and about which raises concerns about a safeguarding issue or modern slavery. This card will give you all the necessary contacts and website addresses for more information. For further details, please contact our Principal Policy Officer Dr Jeremy Leach, [Jeremy.leach@wealden.gov.uk](mailto:Jeremy.leach@wealden.gov.uk)

Wealden Environmental Health officers recently assisted local police in a raid on a brothel in Uckfield. An investigation is now underway into a modern slavery offence.



## Working together to reduce food waste

AS PART of World Food Day this year, Wealden joined the 'Love Food Hate Waste' campaign aiming to raise awareness of how food waste has an impact on the environment.

Across the UK, 4.5 million tonnes of edible food is thrown away each year. This costs the average household £540. It isn't only the value of the food, but the resources taken to make it that are contributing to rising CO<sub>2</sub> emissions.

Councillor Roy Galley, Wealden

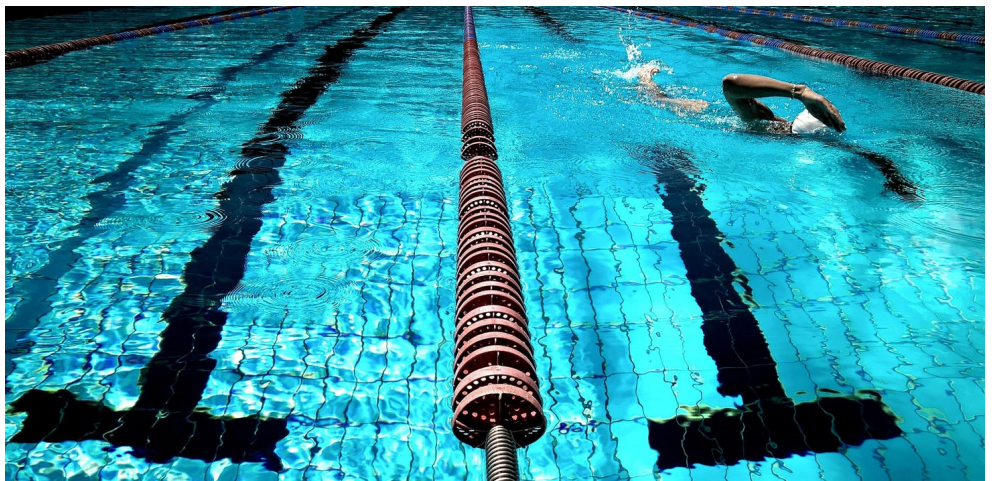


Cabinet member with responsibility for waste management, said: "The average Wealden household rubbish bin contains 39.6% food waste. If everyone in the UK stops throwing away unused food for just one day, it could create the same positive benefits for climate change as planting over half a million trees.

"Let's all work together in Wealden to cut down on food waste, not just today but for the days to come. We can reduce our impact on the environment and save money on our food bills."

To help reduce food waste, why not try writing a shopping list and keeping to it to cut down on unwanted impulse buys. Check the temperature of your fridge to make sure it is set at the optimum levels. Also, check the date labels on food and be clear which ones are expiry dates, and which ones are best before.

For more information on how you can avoid wasting food, please visit [www.wealden.gov.uk](http://www.wealden.gov.uk).



## Exciting plans to improve leisure facilities

WEALDEN'S Cabinet has agreed to proceed with exciting plans to improve health and leisure facilities for Crowborough and Hailsham.

These would include a new training pool extension at the Freedom Leisure Centre in Crowborough and the creation of a new town centre leisure centre in Hailsham as part of the *Hailsham Aspires* project.

"Health and fitness are so important to every generation within Wealden," said Councillor Philip Lunn, Wealden Cabinet member for Community and Public Health. "The changes we are putting in place today will help to greatly improve swimming facilities in the north of the District. The improvements for Hailsham, which will involve a new centre, are even more exciting."

To help deliver these improvements, Wealden District Council will be seeking support from Sport England's Strategic Facility Fund. The Council owns of the Hailsham

leisure building and has a long lease on Crowborough leisure centre.

The four leisure centres in Wealden are managed by Freedom Leisure. The District Council leases the two centres at Uckfield and Heathfield from East Sussex County Council, where they form part of a larger community college site. The Cabinet meeting also agreed to end its lease of the Uckfield and Heathfield buildings, removing an unnecessary layer of management, when the current period expires in 2022. These will revert back to the County Council.

"We wanted to make this decision as soon as possible to provide certainty for both the colleges and East Sussex County Council. It will help them plan for the future and ensure a smooth transition of services.

"It is vital that all Wealden's existing leisure centres continue to provide as much community access as possible," added Councillor Lunn.

THE recycling and waste calendars for 2021, including the re-scheduled collection over Christmas and the New Year, will be available online from 30 November.

We will be asking residents to download a copy of calendars from the waste and recycling pages on our website. We introduced this measure last year. It helps save £1,000s of taxpayers' money and reduces paper waste by the tonne. We will be sending out reminders during the coming month using social media

Residents can also see receive free weekly reminders of waste and recycling collection through email via *MyAlerts*. It includes information about local planning applications and council news.

# Celebrating our Community Heroes

TWENTY-ONE people and groups have been recognised by the Wealden Chairman's Community Awards for their outstanding help, neighbourliness, contribution and service to Individuals and the Community throughout the Covid-19 lockdown period and beyond.

"It never ceases to amaze me



how the people of Wealden pull out all the stops when their friends,

neighbours and the community need assistance in times of trouble," said Councillor Pam Doodles, Chairman of Wealden District Council.

"So much assistance was given, great and small, without fuss and bother. From keeping in touch

with people living alone, food shopping, cooking and delivering hot meals, letter posting, dog walking, making over 1,000 face masks, organising village volunteer groups. Even an online theatre group was formed which was not only hugely enjoyed, it also taught young people new skills!"

"This fall out from this pandemic has emphasised the importance and value of local community, our church family and local shops.

"The spontaneous reaching out we have witnessed since March has been so comforting to us all.

"I feel immensely proud to live amongst the generous people of Wealden. Huge, grateful thanks to everyone for their kindness, thoughtfulness and unflinching and continuing help to others."



**Council Chairman Pam Doodles**

Nine individuals and 12 community groups will receive special Wealden Chairman's Community Hero awards.

The Chairman is looking forward to meeting all the recipients and presenting their awards when she visits their communities.

The Roll of Honour will be displayed at the Council Offices and [on the Wealden website](#).

## Our Wealden Community Individual Heroes are:

### **Kelly Ellis, Cuckmere Valley:**

The Pastoral Minister, for her shopping trips and keeping in touch with everyone.

### **Kate Harris, Frant:**

Supporting local need from her well-stocked village shop and providing a lifeline to villagers through shopping deliveries.

### **Margaret Taylor and Family, Fletching:**

Raising more than £5,000 for St Peter & St James Hospice by making face coverings.

### **Linda Graham, Hartfield:**

A tireless contributor to the local community with her support for older people and help with transport.

### **Dr Annabel Emslie, Hellingly:**

Setting up a WhatsApp group for the village which brought the community together and led to other activities.

### **Pippa Cross, Herstmonceux:**

Setting up the local parish support scheme from day one, organising the helpline and deliveries, then helping re-shape the service as lockdown eased.

### **Lee Boyce, Ninfield:**

Caring for the dogs and cats of vulnerable owners on top of many hours volunteering for an animal charity.

### **Daniel Brookbank, Pevensey:**

Cooking 30 Easter lunches and then organised 30 VE celebration packs for residents who were shielding.

### **Tony Field, Rushlake Green:**

Extending the facilities of the village store to meet the needs of local residents including deliveries to those isolating.



## Our Wealden Community Group Heroes are:

### **The Cuckmere Support Network, Alfriston:**

Continuing to support local people who are shielding, taking more than 258 phone calls and delivering 180 prescriptions.

### **Supporting Crowborough, Crowborough:**

24 co-ordinators and more than 100 volunteers providing support to the town's residents.

### **Local Community Watch, East Dean and Friston:**

Providing free, confidential and informal help to residents which has built lasting links and friendships.

### **Hailsham Active, Hailsham:**

Providing exercise opportunities online & socially distanced classes to support physical and mental wellbeing.

### **Happy to Help, Heathfield & Waldron:**

The brainchild of Charlotte Ward of Kings Church; it has delivered food, prescriptions and matched volunteers to those feeling isolated.

### **Hope Cottage, Hooe:**

The farm shop delivered groceries to those isolating and introduced a hot meal delivery service and much more.

### **Lily Lovett Theatre Group, Laughton:**

A Zoom-based theatre group encouraged children to act, write and sing culminating in a 40-minute online show this summer.

### **MAYFACS, Mayfield:**

Mayfield and Five Ashes Community Services mobilised volunteers to support more than 150 people, and published a magazine to keep people entertained during lockdown.

### **You Raise Me Up, Polegate:**

Organised online meetings and drop-in sessions for bereaved families and others needing support and advice.

### **Rotherfield St Martin, Rotherfield:**

The local charity for older people focussed on preventing loneliness.

### **Uckfield Food Outreach Box Service, Uckfield:**

Volunteers liaised with local farms and a supermarket to provide 300 food boxes for isolating households.

### **Carillon Cottage, Wadhurst:**

The centre mobilised a large number of volunteers to help with groceries, prescriptions, meals and hospital visits.

# Ready, Steady, Census

THE decennial census is almost upon us.

Households across Wealden will soon be asked to take part in the nationwide survey of housing and the population. It has been carried out every decade since 1801, with the exception of 1941.

Information from the digital-first census will help decide how services are planned and funded in your local area. This could mean things like doctors' surgeries, housing or new bus routes.

Households will receive a letter with a unique access code in the post, allowing them to complete their questionnaire online. Paper questionnaires will be available on request. Census day is March 21 2021.

For more information, visit [census.gov.uk](https://census.gov.uk).

## Keep up-to-date with planning applications

FROM the beginning of November, Wealden District Council is no longer sending letters to adjoining neighbours on planning applications considered to be valid .

This is in keeping with the Council's new Statement of Community Involvement which was adopted in July.

Applications and associated documents are published on the Council's website and one or more site notices will be displayed near the application site. Certain applications are advertised in local newspapers in line with statutory regulations. Our free *My Alerts* email newsletter continues to provide details of the three planning applications closest to your address each week.

You can also subscribe for email alert updates on specific planning applications. You can find out more by visiting the [Keeping up-to-date with planning applications page](#) on the Wealden website.

## What can go in your Recycling Bin?

\* All items clean, dry and loose please.

### Yes please

- Glass bottles
- Glass jars
- Cardboard
- Paper
- Shredded paper (in clear bags)
- Food tins
- Drink cans
- Aluminium foil
- Aerosol cans (empty)
- Plastic bottles (ketchup and put lids back on)
- Plastic pots, tubs and trays
- Plastic bags and films
- Plastic packaging

### No thanks

- Electrical items and batteries
- Black plastic bags
- Food waste
- Textiles
- Food/drinks cartons
- Pyrex/ovenproof glassware
- Drinking glasses
- Crockery
- Window panes
- Mirrors
- Light bulbs
- Garden waste
- Polystyrene / bubblewrap
- Hard plastics e.g. toys and plant pots
- Foli-lined plastic pouches and bags e.g. crisp packets
- Household refuse

Over the past few weeks, East Sussex County Council has mailed out recycling stickers and a useful leaflet to every household in Wealden as well as other parts of the Partnership area.

The sticker can be attached to the recycling bin as reminder each week as to what can be recycled. The initiative comes at no cost to East Sussex County Council or the District and Borough Councils. The leaflet has been largely funded by Viridor, the company that receives and processes our recycling, as part of their commitment to improve recycling quality. The sticker is funded by the East Sussex Joint Waste Collection Partnership via grant funding to promote recycling and increase kerbside collection of small electrical items.

## May 6: your election date for 2021

MAY 6 will be a busy time for local elections in Wealden with voting taking place for East Sussex County Council, the Sussex Police and Crime Commissioner and the vacant seats for Hailsham South, Heathfield North and Heathfield South.

There will also be vacancies to decide on a number of parish and town councils, and two Neighbourhood Planning Referendums- Hellingly and Hailsham.

On current advice, we are expecting all polling stations to be open. Arrangements are being put in place to ensure voters and polling station staff are safe from any Covid infection. These will include many of the measures we've become used to in shops and banks over recent months, such as hand sanitiser, floor

markings and face masks.

Voters will also have the option to vote by post or proxy. Information about both ways of voting can be found [on the elections pages](#) of the Wealden website. If you're thinking about voting by post, you can apply now. This will make sure the application is processed early.

Everyone needs to be registered to vote in order to have a say at the elections. If you were not able to respond to Wealden's canvass of voters this autumn, you can register to vote online at [www.gov.uk/register-to-vote](http://www.gov.uk/register-to-vote).



## Technology gives public a voice at planning meetings

WEALDEN District Council welcomed its first members of the public to speak live at their virtual Planning Committee North meeting on 12 November.

More than 30 meetings have now taken place online since March

and are available to watch live or recorded via YouTube. The recent introduction of new software now means individual residents can join the Planning Committee meetings and share their views on submitted planning applications.



## Are you ready?

TIME is running out. The UK is leaving the EU single market and customs union on the 31st December 2020. This will affect citizens and businesses, as well as travel to and from the EU.

You need to take action now if you're:

- Importing goods into the UK.
- Exporting goods from the UK .
- Travelling to the EU.
- Living and working in the EU.
- Staying in the UK if you're an EU citizen.

Check what you need to do to be ready at [www.gov.uk/transition](http://www.gov.uk/transition).

Further information about [the impact on East Sussex](#) can be found on the County Council's website.

For further information about any of the articles in this Parish Bulletin, please contact Policy, Insight & Communications on 01892 602745 or [pr@wealden.gov.uk](mailto:pr@wealden.gov.uk)