

MICKLEHAM PARISH Magazine

A community magazine for Mickleham and Westhumble



A.N. Colwell 1984

December 2025



**SURREY HILLS
HEATING LTD**

**DOMESTIC BOILER SERVICING
AND BREAKDOWN**

OIL, LPG & GAS BOILERS

Call Dathan on: 07944 575970
sales@surreyhillsh heating.co.uk
www.surreyhillsh heating.co.uk



Bullimores



Accountants for Life
Tax • Accounts • Probate
Inheritance Tax &
Executorship

T: 01306 880880

E: partners@bullimores.co.uk

W: www.bullimores.co.uk

Bullimores LLP licensed to carry out the reserved legal activity
of non-contentious probate in England & Wales by the ICAEW



Stepping Stones

MORE THAN JUST A PUB

CAFÉ-BAR RESTAURANT & ALFRESCO DINING
Live music events Take-aways available

Available for functions / private parties / celebrations / family gatherings

Christmas Quiz Tuesday 9th December

January Quiz Tuesday 13th January

Taking Christmas Bookings Now

Every second Tuesday
of the month
from 7 pm
Teams of up to 6

01306 889932
steppingstonespub@gmail.com
www.steppingstonesdorking.co.uk

*Please check website for up-to-date menus
events and current opening times*



Sixth Generation Family Business

24-hour Service, Funeral Plans, Free Advice on all Related Matters,

Free Parking On Site, Memorial Masonry

Trellis House, 190 South Street, Dorking, Surrey, RH4 2ES

01306 882266

office@sherlockandsons.co.uk

www.sherlockandsons.co.uk



MICKLEHAM PARISH Magazine

**December
2025**

**Mickleham
Parish
Magazine**

A community magazine for
Mickleham and Westhumble
published under the auspices
of Mickleham PCC with an
independent editorial panel.

The magazine is published at the
beginning of each month except
January and August.

**COPY DEADLINE
FEBRUARY 2026
MAGAZINE
Sunday
11th January 2026**

send to:
editor@micklehammag.co.uk

Co-editors
Charlotte Daruwalla
07933 300744
Jan Budleigh
07780 976301

Contributions in any form are
welcome as are good quality
photographs. There is no
charge for advertising local
charity and community events.
However the editors reserve
the right to shorten omit or
reformat articles submitted
for publication depending on
space. Copy published is not
necessarily the views of the
editors or panel.



Mickleham Rectory

Hi everyone

Once the clocks have gone back at the end of October it gets dark much earlier in the evening and somehow everything feels gloomier. It is not just the short days, but the news seems full of tragedy, of conflict, of struggle and of cruelty. The war in Ukraine is ongoing, the ceasefire in Gaza is fragile and I am writing this after 10 people were stabbed on a train and after Hurricane Melissa brought such devastation to parts of the Caribbean. We are waiting to hear if the budget is bad news.

As winter sets in, many of us long for more light. We are cheered by the Christmas lights in our streets and in our homes but somehow, we need more. The light of hope, the light of a better future. One of my favourite services of the Christmas season is the Christingle. We usually have a full church, with lots of children and adults singing with enthusiasm such traditional favourites as 'Shine Jesus Shine' and 'Hark the herald angels'. When the lights are dimmed and the candles stuck in oranges are alight it makes a lovely sight, although I know the churchwardens are on standby with buckets of water in case of accidents. The Christingle is a simple visual reminder of what Christmas is about; the coming of God as a baby to rescue us.

The candle represents Jesus, the light of the world coming into the darkness of our world. The world is represented by an orange, and we are reminded that it was created by God and was good, but humanity has messed it up. God has remained faithful despite this and continues to sustain the world, giving us the four seasons (four cocktail sticks) and things for us to enjoy (the dried fruit and sweets on the sticks). He has even shown his great love for us by sending Jesus to live among us and be our light. Jesus was rejected and persecuted as people wanted to remain in darkness, but he still willingly died on the cross to save us from the darkness of evil and death. The red ribbon around the orange reminds us of both love and sacrifice. Death did not defeat Jesus and the light of Jesus shines on. As his light shines in hearts and minds, love can replace hatred, peace can prevail over fear, hope can triumph over despair. We light our candles on our oranges, trusting in God's love and preparing to welcome once more the coming of Jesus at Christmas.

We have a very busy time ahead at church so do check out our Christmas services and I hope to see you at the Christingle service at 11 am on 7th December, as we sing carols in church on 21st at 6.30 pm and also at other times around the villages, as we reflect together on 9th December (a new service for those who find Christmas difficult) and as we celebrate at the Crib service and midnight Holy Communion on 24th and on Christmas Day.

Happy Christmas and may you all have a peaceful and hope-filled New Year.

Sandra

The Rev'd Dr Sandra Faccini, Parish Priest

Printed by Holbrooks Printers Portsmouth



St Michael and All Angels Church, Mickleham

Special Christmas Services 2025



Sunday 7th December 11 am – Christingle Family Service
 Tuesday 9th December 7 pm – A Reflective Christmas service in church
 Tuesday 16th December 6 pm – Carol Singing in the Chapel Ruins, Westhumble
 Friday 19th December from 7.15 pm – Carol Singing round the local pubs
 Sunday 21st December 10 am - Communion Service with carols
 Sunday 21st December 6.30 pm – Candlelit Carol Service
 Wednesday 24th December 4 pm – Christmas Eve Crib Service, Westhumble
 Wednesday 24th December 11.30 pm – Midnight Holy Communion
 Thursday 25th December 10 am – Christmas Day Communion Service for All
 Sunday 28th December 10 am – Informal Holy Communion (no crèche)

If required, Zoom codes for all services held in church will be available in Pews News Online which is sent to all church members each week.
For more details or if you would like to be included on the mailing list, please contact Alison Wood: email admin@micklehamchurch.org.uk or telephone 01372 376443

St Michael's Church Community Group Autumn Lunches



What a lovely and seasonal time was had at this year's Autumn Lunches, which featured delightful singing from the Infant School and raised an impressive £500 for local charities.

A huge thank you to everyone who made this possible!



Advent Gathering at the Courtyard, Mickleham

Late December – Watch out for notices
A special community event hosted by the residents of the Courtyard off Swanworth Lane in Mickleham. Expect a warming fire, warm drinks, nibbles and plenty of good cheer.

Westhumble Christmas Fair @ The Chapel, Westhumble 13th December 2 pm to 4 pm

Our annual Christmas Fair is the perfect place to pick up some festive gifts while enjoying mulled wine (or a soft drink) and a mince pie as you browse the stalls.

This year's tables will include:

- Very special handmade chocolates,
- Lovely honey made right here in Westhumble
- Christmas wreaths and natural decorations from The Garden Shed
- Beautiful handmade Quilts – you will not find better!
- 51 Degrees North with selected Christmas items
- Handmade crafts from The Meeting Room, ideal for stocking fillers
- Handcrafted patchwork and other items

This is a special event – do not miss it! All profits go to local charities.

Foodbank and the Meeting Room

Thank you to everyone who donates items and money for local people in need. We share these donations with the Dorking Area Foodbank, as well as The Meeting Room, an amazing organisation in Leatherhead.

The Meeting Room is often the first port of call for the homeless, those struggling with poverty or with addictions and those for whom social exclusion and loneliness is an everyday reality. The donation provides cooked meals and care packages.

Find out more at
www.themeetingroom.org.uk

Advent Gatherings

Advent Window

@ 51 Degrees North

Thursday 4th December at 5 pm

Join 51 Degrees North for the lighting of their annual Advent Window. Get your Christmas carol voices ready and enjoy some seasonal refreshments. Always a great event!



We look forward to seeing you at these events, they are a lot of fun.
The St Michael's Community Group would like to wish you a very Merry Christmas and a Happy New Year!

Kelvin Pritchard



Christingle Workshop

For full details see page 18

An invitation to a 'Reflective Christmas' service: *A service of calm, time and space*

Tuesday 9th December 7 pm

St Michael and All Angels' Church Mickleham

Christmas always seems to be accompanied by jolly songs, ringing tills, and the expectation that you will have a good time.

But that's not how it feels for many people.

Maybe your year has been hard, for whatever reason (bereavement, illness, estrangement, worry), and Christmas seems to highlight the difficulties.

Or maybe in an over-busy life, you just want space to reflect, recall, regroup.

Whatever the reason, whatever the need, you are welcome here.

We hope that by attending this 'Reflective Christmas' service you will find the space and hope which the Christmas story offers.

You will be made very welcome.

Light refreshments will be served after the service.

Remembrance Sunday



*The choir and congregation gathered at St Michael's to observe the two-minute silence on Sunday 9th November.
The bugler played the Last Post and Will Dennis laid a wreath on behalf of Mickleham Parish Council.*



Dear St Michael's Mickleham,
Thank you so very much for your generous donation of food from your harvest celebration. In weight your donation totalled 35.7 kg!

I have attached a thank you poster for you to print out and display. We are grateful for your support and would

appreciate it if you would kindly pass on our thanks to all who contributed.

As you are aware, more and more families in the UK are turning to food banks because they are finding it very difficult to make ends meet and this is also true in the Dorking area. This year, we have given out more food in emergency food parcels than we have received in donations so your contribution was extremely valuable.

Trussell's recent research 'Hunger in the UK' has revealed the concerning signs of hardship deepening and becoming normalised in communities across the UK. 14.1 million people in the UK faced

hunger last year due to insufficient income, including 3.8 million children – with children aged five and under hit the hardest.

At the Dorking Area Foodbank we are committed to ending hunger and that's why we work together to ensure no one in the UK needs a food bank to survive. Until that happens, we provide emergency food and practical support to people in their hardest moments. We work with partners and the local community to ensure everyone gets the right help long before they need a food bank.

Many thanks,

Liz York

Superb professional
cleaning of carpets
oriental rugs
upholstery curtains
and leather

Guardsman
anti-stain protection

- spot stain and odour removal
- leather cleaning specialists
- flame retarding
- dust mite reduction service
- all work fully insured & guaranteed

For a free no obligation quotation call today
Freephone 0808 144 9071
John Joannides 28 Bracken Close Bookham

Safeclean
The furnishing care specialists from GUARDSMAN



*Pinehurst
Rest Home*

*We aim to provide an excellent service at
competitive rates supporting emotional physical
and social needs of our clients always respecting
and protecting their status as adults.*

- Residential and 24-hour daycare
- Excellent cuisine
- Facilities for disabled: medic bath / lift
- Home doctor in attendance
- Single & sharing rooms
- Convalescent & short stays
- Lounge with TV & piano
- Separate dining room
- Physiotherapist chiropodist & hairdresser
- Entertainment: theatre visits / parties
& cabarets held on premises

National Trust Road Box Hill
Mickleham Dorking Surrey RH5 6BY
Telephone: 01306 889942 / 888253



SIMON HOOPER

For all your decorating needs...

Professional, friendly and speedy service at all times

- | | |
|--------------------------|-----------------------------|
| Fully insured | Insurance work |
| Exterior painting | Interior decorating |
| Free quotes & advice | Oil & Water-based products |
| Commercial/Domestic work | Wallpaper hanging & removal |

07947 135 376 0208 3978 962
www.slhdecoratingservices.com

51^oNORTH

**SERVING DELICIOUS
BREAKFAST, BRUNCH
& LUNCH EVERYDAY**

GOOD TO KNOW:

- Full alcohol licence
- Venue available for private hire
- Outside catering service
- Boutique bedrooms available for
short stays
- Walking routes to 51°North available
- Dogs welcome



LONDON RD, MICKLEHAM, RH5 6EH
FIFTYONE.DEGREESNORTH@YAHOO.COM | 01306 320455

*Dorking
Decorators*

PROFESSIONAL
PAINTERS & DECORATORS

Established Local Family Business

- Over 20 years' experience
- Internal & External
- Commercial & Domestic
- Friendly, First Class Service
- Surrey / Sussex/ Greater London

**FREE ESTIMATES
01306 640418**
www.dorkingdecorators.co.uk
As approved by Checkatrade



Warmest Christmas wishes
and a happy, healthy & peaceful
New Year to all our local friends

Bernice & Denis Bailey, Mary & John Banfield, Jo Brown,
Cathy Cain, Andy Diamond, Charlotte & Rustom Daruwalla,
Sandra Faccini, Rosemary Glover, Val & Mick Hallett,
Barbara & David Jones, Cathy & Keith Lee, Jennifer Louis,
Anne & Tim Mathieson, Elizabeth & Barry Moughton,
Frances Presley, Sarah & Kelvin Pritchard,
Stephanie Randall, Fiona Roberts-Miller, Bernard Salsbury,
Rose & Stan Spence, Sue & Ben Tatham,
Simon, Amy, Martha & Verity Ward, Elizabeth Watson,
Judy & Brian Wilcox

Again this year we are sending our Christmas greetings through the parish magazine and
giving the money saved on cards and postage to charity.

The money raised by this MPM Christmas card will be split between St Michael's CofE Infant
School, St Michael's Community Nursery and the Mickleham Playground.

**Ex-Crew
Get Together**
Tuesday 23rd December

7.30 pm at the Stepping Stones

Contact me for more details
Jonathan Blake 07787 126966

Christmas Carols round the Pubs
Friday 19th December

Join us for carol singing at one or more of the pubs

in Mickleham and Westhumble.

Put a note in your diary:

7.15 pm at The Stepping Stones, 8 pm at the Running Horses

8.45 pm King William IV



**Carols at
Westhumble
Chapel Ruins**

6 pm 16th December

Carol singing at chapel ruins or
opposite at Chapel Farm Westhumble
6 pm depending on conditions. Singing
is followed by drinks and nibbles at the
farm courtesy of John and Liz Absalom.
Make sure to wear suitable footwear
and clothing. Bring a torch. Collection
for the Gambian Horse and Donkey
Trust that Liz supports.

Noise – Data and insights presented to Mole Valley District Council by Mickleham Parish Council

The issue of noise continues to exercise residents and their representatives. We make no apologies for including two articles, one on page 11 to keep readers up-to-date on the action taken by Mickleham Parish Council (MPC) and Westhumble Residents Association in an attempt to improve the situation. Below we have a summary of the response to MVDC's letter published in the October MPM on acoustic camera deployment:

1) Independent Noise Survey

An independent two-week survey (19th August – 2nd September 2025) was commissioned to measure noise levels. The survey was paid for by local residents by way of crowdfunding. Monitoring points were placed on the Zig Zag, Old London Road near the Zig Zag, and Old London Road within the village. This was done due to the increase and concern of complaints from residents (March 2025 onwards) about rising antisocial driving and intolerable noise levels from motorcyclists. The survey recorded 625 incidents from three monitoring sites where noise levels exceeded 86 decibels. That is an average of 45 per day. Over two Sundays there was a total of 154 incidents that exceeded 86db, or 77 per Sunday. In conclusion: 337 exceedances at the busiest location (Old London Road), with maximum levels up to 110 dB(A). 117 exceedances at Zig Zag Road and 171 exceedances at a residential location. Sundays consistently had the highest number of incidents, with peak disturbance during late mornings and afternoons at weekends, and afternoons/evenings on weekdays. For context, the levels measured are

considered excessive even by city centre standards, making the impact more severe in Mickleham's rural environment. Health and Safety Executive guidance identifies noise above 85dB as a health risk. (See noise level comparison chart below.) This evidence confirms that residents are regularly exposed to noise levels far exceeding acceptable standards, amounting to a statutory noise nuisance.

2) Community Survey Evidence (Mickleham Parish Council, 2021)

A survey of residents in 2021 highlighted the scale of community concern: 88.3% of respondents reported experiencing dangerous driving in the area. 74% attributed this behaviour to motorcyclists. 96.4% reported noticing excessive vehicle noise. Of these, 100% identified motorcyclists as the source. 93% said they were personally impacted by noise.

These results demonstrate that the issues of speeding, dangerous driving, and intrusive noise are widespread and consistently linked to motorcyclists.

3) Cultural Attitudes

The issues are compounded by the attitudes of a minority of riders who come to the area and who openly celebrate the disruption caused. Examples, posted publicly online, include:

'I brought the LC out to play and so did a righteous horde of stokers, all snarling, smoking, and screaming their way to Box Hill like some two-stroke cavalry charge. The whole place reeked of oil and nostalgia, just how it bloody should.'

'Massive shout out to the organisers for birthing this glorious chaos, and to everyone who turned up and choked the Surrey Hills in a cloud of proper 2-stroke soul... If you weren't you missed something feral and beautiful.'

These posts demonstrate that excessive noise and antisocial behaviour are not accidental by-products, but often deliberate and celebrated outcomes of gatherings.

4) Surrey Police

Surrey Police have confirmed multiple reports of antisocial and illegal riding, including vehicles with flipped or missing registration plates, uninsured riders, and unlicensed vehicles during targeted patrols.

5) Average Speed Cameras & 'Rat-Run' Effect

Before the introduction of Average Speed Cameras on the A24, Mickleham Parish Council raised concerns that their placement would divert drivers and riders through Mickleham to avoid detection. We recommended that cameras be installed either side of the Old London Road junction at Box Hill School to ensure comprehensive coverage. Surrey County Council Highways rejected this proposal, insisting it would not be a problem.

A follow-up traffic survey, six months later, showed a 40% increase in traffic volume on Old London Road, with a high percentage of vehicles exceeding the speed limit. Surrey County CC refused to act. They have, finally, this year, reduced the speed limit to 20mph through Mickleham.

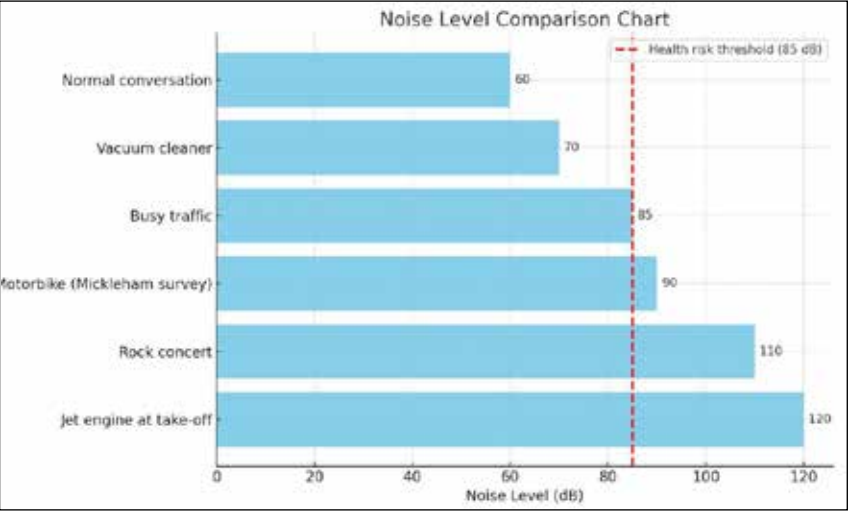
6) Rykas

Contrary to what others are claiming, we do not want to close Rykas Café. Rykas and local residents have co-existed peacefully for 100 years.

We do want Rykas to comply with its lease conditions, which were intended to minimise disturbance. Those are being routinely breached. The car park is supposed to be used for parking vehicles of people visiting Rykas café and Box Hill, and not for organised events designed to attract large numbers of bikers.

7) Wildlife and the National Landscape

This is not only a human issue. Mickleham sits within the Surrey Hills National Landscape, where tranquillity is a defining feature. Excessive noise



A Fond Farewell

At the Family Service on 2nd November Reverend Dr Sandra Faccini, our parish priest, presented gifts and flowers to Elizabeth and Barry Moughton to mark their move to the Cotswolds after 66 years in the parish. Sandra thanked Elizabeth and Barry for their involvement in church life and wished them a very happy future in their new home on behalf of all their friends at St Michael's Church.

It is always sad to say goodbye to good friends, especially when they have been a part of one's life for many, many years. Barry and Elizabeth have certainly been very much a part of church life throughout their time in the parish. They were both on the Parochial Church Council when John Cornell was Rector (1953-1978), and Elizabeth was a founder member of the Young Wives Group which Margaret Cornell set up. The name was later changed to St Michael's Wives when we realised we were no longer young. (Our husbands claimed that it was because we all shopped at M&S.) Later when Elizabeth was again elected to the PCC, she used her experience in Social Survey work to set up the first survey of the parishioners to find out what they wanted from services and what they liked and disliked. These surveys are now a regular activity of the PCC. She served as PCC Secretary for 16 years, retiring in 2023.

In the 1960s/'70s Barry was involved in the very popular Children's Sunday Services organised by Ronnie Shepperd, when Westhumble Chapel was filled with children singing choruses and

continued from page 6

undermines that – disturbing birds, bats, and small mammals that rely on natural soundscapes for feeding, navigation, and communication.

The Countryside and Rights of Way Act (CROW Act) and the National Planning Policy Framework (NPPF) place a statutory duty on local authorities to conserve and enhance natural beauty – which explicitly includes the protection of peace and quiet. By failing to address escalating vehicle noise, Mole Valley District Council risks breaching that duty.



listening to Bible stories. Both he and Elizabeth have supported the Sunday services in the Chapel, with Elizabeth often rushing off after singing in the church choir to attend Mattins at the Chapel.

Both have been active in the wider community of Dorking. In 1961 Barry was elected to serve on Dorking Urban District Council (the precursor to Mole Valley District Council) for the Dorking North ward. He was appointed Chairman of the Council in 1966 in the days when the Chairman was appointed on seniority, not political party.

Barry's work on DUDC and Elizabeth's work at the Citizens Advice Bureau identified housing needs in the area and led to the founding with Roy Currie, Minister of the West Street United Reformed Church, of the Churches of Dorking Housing Association Ltd. Various types of housing needs in 'Dorking and its surrounding villages', which included the community of Mickleham and Westhumble, were addressed over the next 50 years in

different ways. Barry and Elizabeth were both very actively involved with CODHAL until it was acquired by Transform in 2025.

Choral music has been very important to Barry and Elizabeth throughout their lives, and they have made a major contribution to the church choir. In addition to singing Elizabeth has held the glorious title of 'Choir Fixer' since time immemorial. It is thanks to her that the choir stalls were filled for weddings and funerals.

Over the years Barry and Elizabeth generously hosted countless meetings, choir practices and celebrations, first in Camilla Drive and latterly in Cleveland Court. Despite their busy lives they made groups such as Westhumble Talks, St Michael's Wives, Mickleham Choral Society and Bible Study Courses feel very welcome.

And so, regretfully we wish Barry and Elizabeth godspeed with love and thanks, and every good wish for them in their new home.

Sue Tatham

balance – which is something we are all committed to achieving, and an important priority for the future of Surrey.'

Marisa Heath, Cabinet Member for Environment & Planning

The matter has gone to consultation (public consultation closed on 31st October) and 'is due to be considered by the Cabinet in the new year following the conclusion of the current public consultation; it is at this point that a final decision will be made.'

Bliss Chimney Sweeps

All appliances swept

Traditional brush & rod Power sweeping

Pots & cowls fitted
Repointing, lead work & roof repairs

Fully insured Certificates issued

Free friendly advice

07739 638431

Blisschimneys@gmail.com

**We provide the best
possible care for your feet**

Book your appointment:
01372 454583 bookhampodiatry@gmail.com



**Bookham
Chiropody & Podiatry Clinic**
Diagnosis, Expert Treatment & Professional Care
for Your Feet

**3 Hazel Parade, Penrose Road
Fetcham KT22 9PY**
www.bookhampodiatry.co.uk



Your visiting
PHYSIOTHERAPIST

SUE JUDD MCSP HCPC

40 years of experience.

All your requirements for elderly
mobilisation & post-operative
rehabilitation.

07834 227 999 sue-judd@sky.com

TONY WINCH
**CARPENTER, JOINER
& CABINET MAKER**

www.tonywinch.com

01306 742373

07969 016 924

EDE BROS

• REMOVALS • STORAGE • SHIPPING •

- Since 1926, Capel-based and family owned
- STRESS-FREE, local, national & worldwide
- Contact us for your **FREE** estimate...

01306 711293
edebros.co.uk



P J Oliver & Son

Window cleaning

House & Garden Maintenance

Roof Repairs, Guttering

Painting & Decorating

Ground works, fencing, hedge cutting,
and tree work

Also Pest control

Call Phil on 07722 158 111

Email Oliviagarrett79@gmail.com



**YOUR LOCAL FARM SHOP
ON DENBIES WINE ESTATE**

farm shop deli plant centre

Open daily 9.30 am to 5.30 pm and Sundays 10 am to 5 pm

Local Produce, Seasonal Food, Plants and Flowers; Weekly Veg Bags

**Christmas treats and essentials : Turkeys, veg, cheese
and hampers to order**

We deliver veg bags and more to the local area on Fridays

LOCAL • NATURAL • ETHICAL 01306 880720 www.vgfarmshop.com

Mickleham Village Hall Update



We have recently installed solar panels on the east, south and west sides of the main roof and on the kitchen roof. The panels should pay for themselves in about seven years' time

and will then lower the running costs for the hall. The batteries etc are housed in a new shed on the east side of the hall. The hall's extreme resonance has always been a problem. In order to

improve the sound quality we have installed acoustic panels on the ceiling, so that people can now hear each other even when it is very noisy.

David Kennington

St Michael's Church Community Group Food Bank Collection

We welcome items for adults, children and infants including:

- non-perishable food
- laundry and cleaning supplies
- personal hygiene products

LOCAL COLLECTION POINTS

MICKLEHAM

Garden Corner off Old London Road

Mary Banfield 01372 373912

WESTHUMBLE

St Anthony Pilgrims Way

Sue Tatham 01306 882547

The Stepping Stones

Westhumble Street



Also items may be brought to Coffee Mornings at Westhumble Chapel and St Michael's Church on Sunday mornings

To make monetary donations go to: <https://dorkingarea.foodbank.org.uk/give-help/donate-money/>

CHECK THE COMMUNITY WHATSAPP EACH WEEK FOR ITEMS CURRENTLY IN SHORT SUPPLY

Westhumble Bonfire and Fireworks



Thank you everyone for joining us at the Westhumble & Mickleham Bonfire and Fireworks this year. It was wonderful to see and hear how much fun everyone had! It takes a heck of a lot of effort to pull this together, and it is extremely rewarding to receive such good feedback in general.

An enormous thank you to Katya, Cathy, Will, Annie, Elton and Gregg for managing so well to keep everyone supplied with hot dogs and home-brew

beer and mulled wine. We are glad to have supported our local businesses: Dorking Butchery, Coughlan's Bakery, Fuller's for the fireworks, Tom from Routine Coffee and JJ's Gelato in running this community event. Thank you to Jonathan for lighting us up so well again and for his support throughout.

The centre post of the bonfire remained a glowing sentinel for far longer than our bonfire safety team would have been comfortable with – three cheers for Yorik, Jim, Pete, Chris (+ others!). The photo opposite shows the guy expertly built by the children of St Michael's school, and later silhouetted against the raging inferno (photo credit to Elly for that one!).

Thank you to Graham, (+ others) for supporting us on manning the gates to collect entrance fees, ensuring that we can continue to run the event in future years.

As you can tell by the ferocity with which it burned, there are many weekends of work that go into constructing the bonfire prior to the event. Thank you to the usual crowd: you know who you are. It is also great to see new faces, so thanks to Andrew, Mark, Ollie and Vincent, along with a huge crowd of



volunteers who helped with the vital stuffing of the bonfire with newspaper. This year we also had a larger number of kids, taking part in some of the latter weekends of bonfire building and learning the art.

We are already talking excitedly about ways we can improve the experience for next year. Grab any one of us and we will be most receptive to constructive feedback.

Signing off this year: your core team
Rob, Jonny, Doug, Vlad, Clint, Toby



Chapel Farm Macmillan Coffee Morning

Friday 5th December 2025 10 am - 1 pm

Chapel Farm, Westhumble, RH5 6AY

You are invited to our annual coffee morning in aid of Macmillan Cancer Support. The event has been slightly delayed this year due to my surgery in September. However, it is still happening. Please come along, bring some friends, and have a cuppa and some cake. There will be lots of treats to eat and take away available for the weekend.

If you have not been before it will be lovely to welcome you to Chapel Farm. Weather permitting, you are very welcome to take a walk around the gardens and see the animals. If you support us regularly, thank you, and I look forward to welcoming you back to the farm. We raised an amazing £2,370 last year and we would love to continue supporting this wonderful charity. We all know someone who has been supported by Macmillan and it's

great to be able to continue raising funds for them whilst catching up with friends and enjoying a cuppa. If you are unable to come along on the day and wish to support the event there is a link to a JustGiving page below for this coffee morning. Thank you also to my lovely friends, family and neighbours for their support. I look forward to seeing everyone on 5th December.

With love Liz Absalom



Handmade Oak Tables for Sale

Crafted from locally sourced wood at the old Norbury Park sawmill

Two unique natural edge tables, each around 2.1–2.2m long, 1m wide, with bespoke steel legs and a light oak oil finish. £1,950 each. View in Westhumble.

Contact Chris on 07375 891111

Acoustic Camera Deployment for Antisocial Behaviour from Motorcycle Riders

We published in the October edition a joint open letter from Mole Valley District Councillor Caroline Joseph and Surrey Police Borough Commander Inspector James Green to Will Dennis, chair of Mickleham Parish Council, and David Allbeury, chair of Westhumble Residents Association, regarding acoustic camera deployment locally. Will and David have now responded, and a summary of their response is set out below. We cannot print their response in full for reasons of space, but the full response can be found on Mickleham Parish Council's website at <https://www.micklehamparishcouncil.gov.uk>

We appreciate the detailed consideration evidently given to this matter. However, we respectfully disagree with the conclusion that acoustic cameras should be dismissed without a proper trial. Our petition, supported by over 1,300 signatories, specifically requests a trial of acoustic cameras – not immediate permanent deployment – to gather evidence-based data on their effectiveness in our specific circumstances. The letter states that acoustic cameras 'have been deployed in a small number of Council areas' and that 'their efficacy in respect of capturing reliable information from motorcycles is still a matter of debate.' This uncertainty is precisely why a trial is needed. Dismissing the technology before testing it in Mole Valley contradicts evidence-based policymaking. We acknowledge the identification challenges outlined:

- Multiple motorcycles triggering cameras simultaneously
- Rear-only number plates and illegal flip plates
- Helmet-wearing riders preventing visual identification
- PSPO limitations on compelling keeper identification

However, these are enforcement challenges that exist with or without acoustic cameras.

AI-assisted analysis is rapidly developing in this field. What seems challenging today may be resolved by technology available during a 12-month trial period. That trial period should start in April 2026, at the beginning of the peak summer season. We should not rule out options based on current limitations,

as the technology continues to evolve.

It is important to note that the extreme noise events were contributed to by the placement of speed cameras on the A24, creating a rat run through Mickleham. This, coupled with extended opening hours and alcohol sales at Rykas, has exacerbated the situation. We have no desire to see Rykas closed, but they can play a significant role in addressing the problem, especially as the freehold of their site is owned by Surrey County Council. Current guidance places acceptable motorbike noise levels at 77dBA. Setting the acoustic level at a few dBA above this would catch the extreme abusers and not interfere with the enjoyment of the lawful majority.

The letter states that 'on the ground policing' should be prioritised, with the Borough Commander looking to increase this. We strongly support enhanced police presence. However, we must be realistic about capacity.

On 21st September 2025, effective policing of a single event at Rykas required five police officers for an entire Sunday. Throughout the summer months, the problem occurs multiple days each week. Surrey Police does not have the resources to provide this level of presence consistently across the season. Despite the officers' exemplary efforts on 21st September, including enduring verbal abuse from the crowd at Rykas car park. This level of deployment is simply unsustainable. Acoustic cameras are not proposed as a replacement for police presence but as an additional resource – providing evidence that enables more efficient deployment of scarce police resources.

We have responded to the current consultation on this matter. However, we were surprised that the open letter was issued just before the consultation started, effectively prejudging the consultation outcome and undermining the public consultation process. Residents

deserve to know that their input will be genuinely considered, not dismissed before the consultation has closed.

We support the proposed Public Spaces Protection Order and believe it will be valuable if properly drafted. We have submitted detailed drafting suggestions.

We also accept that Rykas can play an important role. We suggest they:

- Revert to their original opening hours
- Comply fully with their lease terms, which prohibit alcohol sales and restrict car park usage to parking vehicles only
- Discourage antisocial bikers and those with loud exhausts
- Work together with us, the police and Mole Valley District Council to make Rykas and its vicinity a pleasant area for all to visit.

Our Request: conduct a time-limited trial of acoustic cameras (12 months commencing April 2026) with clear evaluation criteria.

If the trial demonstrates that acoustic cameras are ineffective or provide poor value for money, that evidence will justify their non-deployment. If they prove effective, the community gains a valuable enforcement tool. Either outcome serves the evidence-based policymaking that residents deserve.

The cost of a trial is modest compared to the ongoing impact on residents' quality of life and the continued demand on police resources. The question is not whether acoustic cameras are a perfect solution – no single measure will be – but whether they can form part of an effective enforcement toolkit.

Will Dennis David Allbeury



A Confidential & Safe Space to Talk

Counselling • Mind & Body Healing
Reiki • Relax into Nature Sessions
Face to face/Online/Outdoors/Distance

Supporting you with compassion and
understanding through challenging times



Call Judith Cobby
on 01306 882229
or 07790 614448

www.healing-inspiration.co.uk

TIM LANGLEY

Experienced craftsman

RESTORATION & REPAIRS OF
ANTIQUE & MODERN FURNITURE
FRENCH POLISHING & RE-FINISHING
GENERAL REPAIRS

Free estimates

01372 457700 07960 486455

tmlangley@virginmedia.com

Building Plans

For home improvements & extensions

*Including planning & building regulations
Fast efficient service at competitive rates*

MICHAEL LLOYD CEng MICE

For free consultation:

Phone: 01483 205479 or 07958 791 402

mfl_uk@yahoo.co.uk

DORI VANA PLUMBING

Bathroom renovations and
all plumbing services

07977 220465 / 01306 887282

dvanaplumbing@gmail.com



RGS

EST.1985

**Gardens large and small
we maintain them all**

All aspects of private and commercial garden
and estate maintenance landscaping undertaken
Fencing, grass & hedge cutting

Telephone: 01737 841524 Mobile: 07887 838666

References available upon request

PAINTING DECORATING

ANDREW CLARK 07800 796 737

INTERIOR & EXTERIOR • CARPENTRY • HANDYMAN
WORKING LOCALLY 20+ YEARS RELIABLE PROFESSIONAL RECOMMENDABLE



KING WILLIAM IV

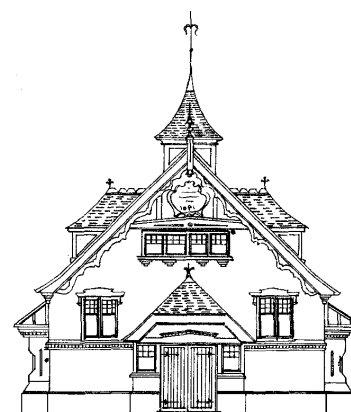
Dear Friends and Neighbours

Happy Christmas to you all. We look forward to seeing you over the festive period. We may have one or two tables left for Christmas Day, as it's our first time opening for a while.

Alternatively pop in and make the most of the mulled wine and mince pies whilst taking in the views in our twinkly lights Christmas garden, or in front of the cosy log burner. We are still taking bookings for small parties and get-togethers too. And our favourite carol singing on Friday 19th Dec @ 8.45 pm.

If you are still looking for family Christmas present ideas, we had an amazing time on the cow herding experience at Norbury Park Farm on a sunny November day. We absolutely loved it all, especially meeting calf Octavia, and riding on the quad rounding up the cows. Thanks Mark! Or there are always King Bill vouchers for sale.

Best wishes for 2026. Eamonn, Anne and Kat



Mickleham Village Hall available for hire

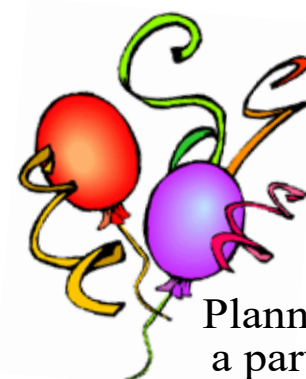
Hall bookings
Table & chair hire

Deanna Darnell

07790 941 601

bookings@micklehamvh.co.uk

www.micklehamvillagehall.org.uk



Planning
a party?

Equipment
available for hire

China ~ Cutlery

Electric urn

Equipment hire

Mary Banfield

01372 373912

admin@micklehamvh.co.uk

Community Directory

BOX HILL AND HEADLEY HEATH (National Trust) 01306 888793

Lead Ranger – Meredith Westall (Merry) meredith.westall@nationaltrust.org.uk

07811 088097

Friends of Box Hill – Chair Lyn Richards 01737 842889

lyn@mra.uk.net

DORKING CRICKET CLUB

Chairman – Andrew Homewood homewooda@hotmail.co.uk

DORKING GROUP OF ARTISTS

Exhibition Secretary – Patricia Booth patricia booth100@gmail.com

DORKING LAWN TENNIS & SQUASH CLUB

Maddy Halliwell madeline_halliwell@hotmail.co.uk

DORKING RUGBY CLUB

Jim Evans 07789 176417

jim@flintcottage.net

THE GARDEN SHED

Pauline Davis 07759 646353

paulinedavis33@icloud.com

JUNIPER HALL FIELD CENTRE

01306 734501

enquiries.jh@field-studies-council.org

Head of Centre – Sarah Wyper s.wyper@field-studies-council.org

Friends of Juniper Hall friendsofjuniperhall.org

friendsofjuniperhall@gmail.com

MICKLEHAM & WESTHUMBLE BADMINTON CLUB

Membership Secretary – Sarah Pritchard tinkerbell0044@hotmail.com

MICKLEHAM CHILDREN'S PLAYGROUND ASSOCIATION

Secretary – Sarah Parfitt 07767 891772

sarah@sarahparfitt.com

MICKLEHAM CHORAL SOCIETY

www.micklehamchoral.org.uk

THURSDAYS 8 - 10 pm – MICKLEHAM VILLAGE HALL

Conductor – Juliet Hornby 01372 373106

Secretary – Mike Benson secretary@micklehamchoral.org.uk

MICKLEHAM CRICKET CLUB

Membership contact – Will Dennis 07903 842674

will@micklehamhallfarm.co.uk

MICKLEHAM OLD BOX HILLIANS FOOTBALL CLUB

Secretary – John Atewell 01372 374745

MICKLEHAM PARISH COUNCIL

SEE WEBSITE FOR MEETING DATES www.micklehamparishcouncil.gov.uk

Chairman – Will Dennis wdatmpc@gmail.com

Parish Clerk – Feena Graham clerkatmpc@gmail.com

MICKLEHAM PARISH MAGAZINE

Co-Editor – Charlotte Daruwalla 07933 300744

editor@micklehammag.co.uk

Co-Editor – Jan Budleigh 07780 976301

editor@micklehammag.co.uk

MICKLEHAM VILLAGE HALL

Chairman – David Kennington 01372 362309

davidkennington144@gmail.com

Bookings Manager – Deanna Darnell 07790 941601

bookings@micklehamvh.co.uk

ST MICHAEL'S CHURCH

*within the United Benefice
of Leatherhead and Mickleham*

INCUMBENT — The Rev'd Will Perry 01372 372313

PARISH PRIEST

The Rev'd Dr Sandra Faccini * 01372 417664
07763 488961

parishpriest@micklehamchurch.org.uk

* Main working days: Monday, Tuesday and Sunday

CHURCHWARDENS

Lucy Adshead 07773 294026
cwa@micklehamchurch.org.uk

John Banfield 07831 606493
banfieldjohn@aol.com

PARISH SAFEGUARDING OFFICER

Vickie Leney 01306 884054
safeguarding@micklehamchurch.org.uk

PARISH ADMINISTRATOR

Alison Wood 01372 376443
admin@micklehamchurch.org.uk

PCC SECRETARY

Caroline Jones 07504 271376
pccsecretary@micklehamchurch.org.uk

TREASURER

Richard Siberry 01372 375303
pcctreasurer@micklehamchurch.org.uk

ORGANIST

David Fishwick 0208 7732420
fishwick929@gmail.com

WEDDINGS CO-ORDINATOR

Elaine Machin 01372 724972
weddings@micklehamchurch.org.uk

BAPTISMS CO-ORDINATOR

Vickie Leney 01306 884054
baptisms@micklehamchurch.org.uk

FUNERALS CO-ORDINATOR

Carole Brough Fuller 01737 842918
funerals@micklehamchurch.org.uk

AUDIOVISUAL

Kelvin Pritchard 07770 280410
kelvin@wan21an.com

PCC ECO GROUP

David Kennington 01372 362309
davidkennington144@gmail.com

PASTORAL VISITOR

Annette Collinge 01306 882214
annettejc46@gmail.com

www.micklehamchurch.org.uk

For information about services for other denominations
see website pages.

Search on 'Churches Together Mole Valley'

CALENDAR DECEMBER



2 Tuesday 7 pm
5 Friday 10 am - 1 pm
6 Saturday 10 am - noon

7 **Second SUNDAY of Advent** 9.15- 12.30 pm
9.30 - 10.45 am
11 am
8 Monday 11 am

9 Tuesday 7 pm
13 Saturday 2 pm - 4 pm

14 **Third SUNDAY of Advent** 8 am
10 am
15 Monday 11 am - noon
16 Tuesday 6 pm

18 Thursday 7.30 pm
19 Friday from 7 pm
20 Saturday 9 - 10 am

21 **Fourth SUNDAY of Advent** 10 am
6.30 pm
23 Tuesday 7.30 pm
24 Wednesday **CHRISTMAS EVE** 4 pm
11.30 pm

25 **Thursday CHRISTMAS DAY** 10 am
27 Saturday 9 - 10 am

28 **First SUNDAY of Christmas** 10 am

Compline in church
Macmillan Coffee Morning at Chapel Farm p10
Coffee at Westhumble Chapel p19
Nursery Christmas Fair p25

Garden Shed Christmas Craft Workshop p18
Christingle Workshop p18
Family Service **Note the time**
Mums/Carers and Toddlers Group Westhumble Chapel p25
A Reflective Christmas Service p2
Christmas Fair at Westhumble Chapel p3

BCP Holy Communion at Westhumble Chapel
Holy Communion
Toddler Group at Westhumble Chapel p25
Carol singing at the chapel ruins p5
NB No Compline tonight
MCS Christmas Carol Party p19
Carol singing in the pubs p5
Women's Breakfast at Stepping Stones p27

Holy Communion
Candlelit Carol Service in church
Ex-crew Get Together Stepping Stones p5
Nativity Crib Service in Westhumble Field p23
Midnight Holy Communion
Family Holy Communion
Men's Breakfast at The Stepping Stones p19

Holy Communion

JANUARY

3 Saturday 10 am - noon

4 **SUNDAY Epiphany** 10 am
6 Tuesday 7 pm

11 **First SUNDAY of Epiphany** 8 am
10 am

18 **Second SUNDAY of Epiphany** 10 am

19 Monday
20 Tuesday 7 pm
24 Saturday 9 - 10 am

25 **Third SUNDAY of Epiphany** 8 am
10 am
31 Saturday 9 - 10 am

Coffee at Westhumble Chapel p2

Family Service
Compline in church

BCP Holy Communion at Westhumble Chapel
Holy Communion

CW Holy Communion

Tea @ 3 p19
Compline in church
Men's Breakfast at The Stepping Stones p19

BCP Holy Communion at Westhumble Chapel
Holy Communion
Women's Breakfast at Stepping Stones p19



Dates for your diary

Saturday 25th April
Saturday 11th July

Hort Soc AGM and plant sale
Summer Show



MEMBERS OF THE PAROCHIAL CHURCH COUNCIL

Andy Diamond	Elaine Machin
Celia Lyons	Tim Mathieson
Caroline Jones	Beverley Mehta
Vickie Leney	Richard Siberry
Susan McGrath	Amanda Wadsworth
Paddy MacVean	

ST MICHAEL'S CHURCH COMMUNITY GROUP COMMITTEE

Mark Day	07852 117249 mickleham@hotmail.com
Denise Darling	denisedarling4@btinternet.com 07780 673372
Andy Diamond	07789 775354 adiamond714@gmail.com
Kelvin Pritchard	07770 280410 Kelvin@wan2lan.com

HELPING HANDS INCLUDING FOOD FOR FRIENDS

A service for all residents of Mickleham and Westhumble

Examples of services we offer:

- Essential shopping/collection of prescriptions
- Changing library books
- Small tasks: eg changing fuses, altering clocks etc
- Dog walking
- Visiting/befriending
- Home-cooked meals for local families going through difficult times

Requests to:

Will Dennis 07903 842674 wddennis@icloud.com
(who can put requests onto WhatsApp)
Mary Banfield 01372 373912 mgbbmw@aol.com
Frances Presley 01306 882473 jasempres@gmail.com

*More helpers needed – please contact
Frances if you can spare some time.*

Tools With a Mission

List of acceptable donations at www.twam.co.uk
Including agricultural, carpentry, and mechanic's tools,
sewing machines, haberdashery and IT equipment.

Community Directory

Continued from page 13

MICKLEHAM & WESTHUMBLE HORTICULTURAL SOCIETY

Chairman – David Kennington 01372 362309
www.surreycommunity.info/mwhs or davidkennington144@gmail.com

MICKLEHAM AND WESTHUMBLE LOCAL HISTORY GROUP

Chairman – Ben Tatham 01306 882547
ben@thetatham.co.uk or www.micklehamwesthumblehistory.co.uk

MOLE VALLEY DISTRICT COUNCIL

Cllr Chris Budleigh 07801 520059
councillor.budleigh@molevalley.gov.uk

Cllr Abhiram Magesh 07765 126399
councillor.magesh@molevalley.gov.uk

Cllr Leah Mursaleen-Plank 07803 353352
councillor.mursaleen-plank@molevalley.gov.uk

RGS SURREY HILLS

Headmistress – Hayley Robinson 01306 374814
reception@rgs-surreyhill.org

ST MICHAEL'S CHURCH OF ENGLAND (A) INFANT SCHOOL

01372 373717
info@stmichaels-dorking.surrey.sch.uk

Friends of St Michael's School – friendsofstmichaels2017@gmail.com

ST MICHAEL'S COMMUNITY NURSERY

WEEKDAY MORNINGS – MICKLEHAM VILLAGE HALL

Supervisor – Hilary Budd 01372 361021
stmichaelsnursery@btinternet.com

SURREY COUNTY COUNCIL

Councillor – Hazel Watson 01306 880120
hva.watson@btinternet.com

SURREY WILDLIFE TRUST

01483 795440
info@surreywt.org.uk

THE ARTS SOCIETIES (FORMERLY NADFAS)

Betchworth – Mary Venning 01306 883301
Dorking – Sue Tatham 01306 882547
Leatherhead – Beverley Mehta 01372 374304

TREE WARDEN

David Kennington 07546 952521
davidkennington144@gmail.com

WESTHUMBLE NEIGHBOURHOOD WATCH

Lead Co-ordinator – David Allbeury 07860 227451
westhumble.neighbourhood.watch@gmail.com

WHATSAPP GROUP

Neil MacKay nlpm@lineone.net

ADDITIONAL CONTACT INFORMATION

CITIZENS ADVICE

Dorking – Lyons Court 01306 732302
Leatherhead – Swan Mews High Street 01306 732301

CRIMESTOPPERS

POLICE Non-emergencies 0800 555 111

(often quicker to make online report) <https://report.police.uk/>

Neighbourhood Specialist Team – Dorking Rural East
General enquiries molevalley@surrey.pnn.police.uk

NHS Urgent and emergency care 111

Babysitting by local youngsters

Babysitters listed below are at least 14 years old.

Gracie Owen *07790 900649
Eva Lanceley *07903 630567
Ella Parfitt 07746 882175
Bea Moore *07444 557958
Farah Patel 07757807246
Mia McPhillips *07792 187160
Holly Flynn *07917 434566

*Parent/partner's mobile number

New to the magazine:

Catsitting

Valentina James-Rae
07778 911432

If you would like to add your name to either of these lists please get in touch with editor@micklehammag.co.uk
No Charge

Advertising in the Parish Magazine

Please contact
ads@micklehammag.co.uk
Small ads: a nominal fee is charged for ads where items or services are bought or sold.

We have been advised to print the following reminder:
We cannot guarantee the quality of the goods and services offered by our advertisers.

We are very grateful to all our advertisers, who make the production and distribution of this magazine possible.



Remembrance Sunday Concert



St Michael's Church was packed for the Choral Society's Remembrance Sunday Concert on 9th November

but conversations were hushed as we awaited the bell tolling for 7 pm, followed by the mournful *Last Post* played expertly on the trumpet by Eliza Aarvold.

Musical Director Juliet Hornby's theme for the concert this year was *For Those in Peril on the Sea* with pieces inspired by the nature of water. These were accompanied by four movements from Mozart's Requiem, reflecting the deaths of so many killed at sea in times of war. The Lacrymosa, written in 1791 as Mozart himself was dying and sung towards the end of the concert, was particularly moving.

For this concert I was in the audience rather than performing and, sitting centrally, could enjoy the full effect of the wonderful harmonies rippling to and fro through the choir like waves. In fact, this was especially true of the song *Waving* by local composer Ian Assersohn, which evoked the sadness

of standing on a dockside watching a loved one's ship pull out to sea. Similar feelings were stirred by the readings. Mark Day read Kipling's poem *My Boy Jack* which was written after his son was killed at sea in the First World War, but relates to Jack Cornwell, at 16 the youngest recipient of the Victoria Cross, who stayed at his post and went down with his ship. Andy Diamond read an excerpt from *The Snow Goose* by Paul Gallico about the owner of a small boat sailing to Dunkirk to save British troops and Judy Apps ended with Siegfried Sassoon's poem *Everyone Sang*, recalling the sudden burst of joy when the war ended.

There were also beautiful solos from Anna Leon and ensemble performances of Elizabeth Poston's *The Water of Tyne* and *Sea Fever* by Amy Cheney Beach.

Being in the audience I discovered the collective uncertainty of Remembrance Sunday etiquette. Would it be right to disturb the atmosphere of solemnity created by the tolling bell and the *Last Post* by applauding each of the pieces? The silence was awkward and the desire to demonstrate our appreciation was

Photos by David Hooper



strong so we achieved a mixture and the ovation at the end was long and very sincere.

Dina Stovell

Community News



Welcome to Jane and Nick who wrote:

Hi Everyone

We are Jane and Nick and have just moved into Burney Road. We are not new to the area, having lived in Brockham for many years. We have really appreciated the warm welcome and look forward to meeting new friends and becoming part of this vibrant community;

and to James and Emily who also wrote:

We have recently moved to Pilgrims Close from Ripley, but before Ripley we were in Australia, and before that we were in Scotland! We have a one-year-old labrador called Whisky and have loved meeting everyone. We are very glad that we have moved to such a friendly community.

Congratulations to Georgina Hayes and Josh Steer who were married at St Michael's Church in September. Sally Hayes (mother of the bride) wrote:

On a glorious September afternoon our daughter Georgina walked down the aisle in front of 124 friends and family to be greeted by her groom Josh.

We would like to thank everyone for making the day so special including Lucy Adshead, Alison Wood, David Fishwick, Elaine Machin, Kelvin Pritchard and of course Rev'd Sandra.

Congratulations to Valerie and Stuart Leake of Westhumble on the birth of grandson, Jack, cousin to their 2-year-old granddaughter, Dove.

Please let the editor know about any new arrivals – neighbours, babies, grandchildren if you wish. However we can only publish these if we are



assured that the people concerned are happy with the publication, including the parents of newborn grandchildren announced here. We do not give house details, only the road or village.



A bee covered in pollen

For our final guest speaker of the year we invited Peter Smith, a Surrey-based beekeeper and amateur entomologist who has spent over a

Protecting Our Pollinators

decade studying bees, moths and other pollinators to join our Garden Shed evening. Through his illustrated talk he shared both his fascination and concern for their future. Drawing on his experience with a variety of conservation trusts and years of fieldwork, Peter explained why pollinators matter far beyond our gardens, they are responsible for around three-quarters of the food we eat and are vital to healthy ecosystems.

He began by painting a picture of what is happening; many insect populations are in steep decline due to habitat loss, pesticides, climate change and competition from managed species including farmed honey bees. In

addition our tidy gardens, chemical sprays and reduced wildflower spaces make life harder for insects. Many of us are aware of the declining number of honey bees but wild pollinators like bumble bees, solitary bees, butterflies, beetles and even moths are also affected.

A grim picture we can easily help to turn things around with some simple changes. His advice was refreshingly practical and does not need huge budgets; plant more flowers that bloom across the seasons, ditch pesticides, leave a patch of garden wild and create nesting spots for solitary bees. Protecting pollinators is not just about saving insects, it is about keeping our world vibrant, balanced and full of life.

Christmas Craft Workshop

Make a Wreath or Table Decoration

Cost £45 Refreshments included

Booking essential

Sunday 7th December

9.15 am - 12.30 pm

Mickleham Village Hall

Details at www.gardenshed.club or questions,

Pauline Davis 07759 646353 or

paulinedavis33@icloud.com



First Saturday of the month

Coffee Morning

Westhumble Chapel

Saturday 6th December

Saturday 3rd January

Come along between 10 am and noon

Coffee and cake £2 Free drinks for children

On 3rd January, bacon butties an extra option Everyone welcome

For further information call Jonathan Blake 07787 126966



Tea @3

Monday 19th January

Host: Frances Presley

Fredley Lodge, Fredley Park, RH5 6DD

If you can help with future events, please contact Julia at siberrman@btinternet.com

ALL WELCOME TRANSPORT AVAILABLE



Tickets £15 adults, £7.50 children 12 and under

Book tickets via Events page on

www.micklehamchoral.org.uk

Mickleham Choral Society CHRISTMAS CAROL PARTY

Carols and festive music followed by seasonal buffet and mulled wine

Thursday 18th December

Mickleham Village Hall 7.30 pm

Friends of Juniper Hall

In October the Friends of Juniper Hall were given a talk by Sarah Bradford entitled 'A stroll through the grounds in time'. Sarah, the Halls Maintenance and Estate Assistant, shared with us the results of her extensive research into how the Juniper Hall grounds have changed in their layout and use since the 18th century.

Any garden might have several uses ie to please the eye, somewhere to grow fruit and vegetables, land for animals, an area for sports and recreation or a source of education. The grounds have been all of these things over time from a pleasure garden attached to a mansion owned by many wealthy families in the 18th and 19th centuries, to its current use as a Field Studies Centre educating people of all ages about the natural world.

A very early picture shows the 18th Century with the original entrance on to London Road, the landscaped garden and the Cypress trees, a couple of which still survive. A copy of the sale notice in 1825 describes 'about 50 acres of park and paddocks including a brew-house, an ice-house, stabling for 10 or more horses, judiciously arranged with lawn, pleasure ground, walled garden, greenhouse and orchard'.

These features have changed significantly over time but the ice-house

remains, and has to be maintained to avoid tree roots damaging the roof. This is one of the many tasks the current garden team, largely made up of volunteers, carry out. The emphasis now is on providing a wildlife habitat and environment in which education can take place. Recent additions have been a dipping pond and a wellbeing garden. Work continues to adapt the grounds to fit the needs of a Field Study Centre.

In November with a talk by Nicola Keightley, Senior Tutor and responsible for community engagement entitled appropriately, The Ripple Effect: How your support helps bring nature to life at Juniper Hall. Nicola updated us on how two key projects funded by the Friends of Juniper Hall have made a significant contribution to the teaching environment. The dipping pond, built with the aid of funds from the friends, opened in 2022, has become a great educational resource as it has been inhabited by a wide range of pond life and is used by children of all ages. The stretch tent, paid for by the friends, and erected in 2024, originally intended as a summer open air classroom, has become an all year round resource and can be used as an outside laboratory for studying the creatures found in the pond.



A picture of Juniper Hall in days gone by

Future plans include extending existing bushcraft activities by opening up more of the grounds for activities such as Shelter building and campfire cooking – things that some children will never have experienced before.

Nicola's remit is connecting people, learning, and nature; and hopefully involving local people. To that end she is hoping to open up the Hall to visitors during next year's heritage week so 'watch this space'.

The last event this year will be the annual Christmas Lunch in December and we are working on the programme of events for 2026 which will be published in the New Year. New Members would be very welcome and you can find out all about the Friends of Juniper Hall's activities and how to become a member by visiting our website friendsofjuniperhall.org or contacting us via email on friendsofjuniperhall@gmail.com

Peter Almond

Men's and Women's Breakfasts

9-10 am at The Stepping Stones pub

WOMEN'S BREAKFAST

3RD SATURDAY OF THE MONTH
NEXT BREAKFASTS

20TH DECEMBER 31ST JANUARY

Book with: Stephanie Randall

srandall55@gmail.com

MEN'S BREAKFAST

4TH SATURDAY OF THE MONTH
NEXT BREAKFASTS

27TH DECEMBER 24TH JANUARY

Book with: Andy Diamond

adiamond714@gmail.com

CARPET REVIVAL **REVIVING CARPETS & UPHOLSTERY IN SURREY**
Covering Dorking and all surrounding areas

We clean to a professional standard using eco-friendly chemicals and the latest equipment.
Offering a thorough survey, clean and customer satisfaction. Certified and insured.

Call 01306 740035 / 07747 122128
 or visit www.carpetrevival.co.uk
 to book a free home visit/quotation

Quote Code 'CR110' and save 10% off your booking

Vivien Cresswell
Made-to-measure Soft Furnishings
 Curtains Roman Blinds Cushions
 Extensive range of fabrics
 01737 843858
info@cresswellscurtains.co.uk
www.vivien.cresswell.co.uk

Domestic Appliance Repairs
 30 years' experience repairing and installing all gas and electric domestic appliances

- Cookers, Microwaves
- Dishwashers
- Washing machines
- Fridges / Freezers
- Water coolers
- Coffee machines
- Tumble dryers

Contact: Andy 07895 719 706
andy@kirksdomestics.co.uk



STEVE LAWRENCE
BOILERS & HEATING
 Boiler installation, maintenance and repair
 Based in Mickleham Local references
 30+ years' experience
 07760 266718

Primal Method Personal Training

 **Steven Cook**
 NASM CPT, FRCms

Mobility + strength training for a stronger body, less pain, and greater freedom of movement

First session FREE!
 Email: smarttraining32@gmail.com

Phil's Mowing Dorking
 Regular Lawn Mowing
 General Garden Maintenance
 Lawn Care & turfing
 Hedge Trimming
 Pressure Washing

 phil@philsmowingdorking.co.uk
 07905 160 765

Knot Only Wood
GARDEN RENOVATIONS

Decking Patios
 Garden Buildings Driveways
 All Landscaping Fencing

Helping you transform your outdoor space from start to finish

Tel: 01306 627604 Mob: 07872 038318
knotonlywood.co.uk

Mistletoe and its hosts in Mickleham

Like holly and ivy, mistletoe is one of those evergreen plants we associate with Christmas and the winter solstice. Unlike the first two which are part of a long tradition of 'bringing in the green', mistletoe differs as, in areas of Europe where it grew, it was believed to have special properties because of its habit of growing on other trees. Its white berries too are distinctive and were believed to have special healing properties.

Mistletoe is an interesting species. It is described as a hemi-parasite, which means that it is partially dependent on its host plant for water and some nutrients but it is green and so can make its own food by photosynthesis. The host plants are all woody trees or shrubs. Mistletoe spreads from one tree to another by means of its white berries being carried on the beaks of birds, mainly mistle thrushes and blackcaps. The white flesh around the seeds is sticky and the birds wipe their beaks on trees to get rid of this sticky substance. If this happens in a crevice in the bark of a suitable host species, the seed may germinate in the spring. The seedling produces a root-like structure that grows through the bark and into the conducting tissue of the host. Growth is at first slow but after a few years, a characteristic mistletoe bunch will be formed, especially visible in the winter among the bare branches of its host. Like holly, mistletoe has separate male and female plants and berries will only be formed on the latter.

Whether or not a mistletoe seed will successfully establish itself on a host in part is dependent on there being a secure crevice in the bark. The rougher a bark is, the greater the chance of a seed being placed in a suitable spot. Trees such as beech have a smooth bark

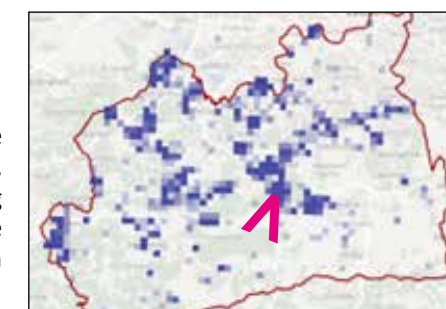
and so are unlikely to provide suitable crevices. There must be other factors, possibly chemical, that inhibit seedling establishment on some trees and there may also be some genetic factors within mistletoe as to suitable host species.

The map shows the current distribution of mistletoe in the old county of Surrey at 1km-square scale, with the Thames forming the northern boundary. The plant seems most frequent in the river valleys. The darker the blue, the more frequent the records. The blue squares north of Dorking represent our parish. We are in a hot spot for mistletoe plants. There has been an increase in these last few years, perhaps linked to climate change and the ensuing milder winters. It has also been suggested that the number of overwintering blackcaps has helped spread the seeds.

We are also in a hot spot for the number of host species. As so far recorded, the following trees are hosts to mistletoe in our parish: F = frequent; O = occasional and R = rare as a host species.

Apple O	Buckthorn R
False-acacia O	Field Maple R
Goat Willow - R	Hawthorn F
Horse-chestnut R	Hybrid Lime F
Hybrid Black-poplar O	Sycamore R
Purple Crab R	Silver Birch R
Common Whitebeam F	

There is a tree hosting mistletoe in the central reservation of the A24 south of the Burford Bridge but I have failed to identify it when driving past. I suspect it is a non-native species. Mistletoe used to grow on a lovely old Hornbeam by the banks of the river in Burford Meadow but the tree was washed away in the floods in 2000. It also used to grow on a Goat (Pussy) Willow in Juniper Bottom but was probably the cause of this tree's death. On nearby Headley Heath, there



Top: The map, less than ideal, shows Dorking almost in the middle indicated by the arrow
 Below: A close up of the berries

is a bunch of mistletoe on a Rowan in the main car park. If anyone knows of mistletoe growing on another species, perhaps they could let me know?

As well as a rise in the number of plants, in recent years there has been an increase in host species. Those marked R above have nearly all been recorded in the last few years. Is mistletoe changing genetically or is this increase just by chance? Whatever the explanations for the increases in both number of plants and the number of host species, here in Mickleham we can enjoy and appreciate living in a mistletoe hotspot. NB: no picking from the wild please!

The national distribution of Mistletoe can be seen at <https://plantatlas2020.org/atlas/2cd4p9h.cpe> which shows this species more or less confined to central, southern and eastern England. The river Mersey seems to form part of its northerly limit.

Ann Sankey

Mickleham & Westhumble Horticultural Society New Membership or Renewal

Annual subscriptions of £5 per household are due on 1st January 2026. Membership fees enable us to hold our popular shows in Mickleham Village Hall each year and all members are entered into a prize draw at the AGM for garden vouchers of £50. Members are also invited to join our gardening-related WhatsApp group.

Although we still accept cash, we encourage payment by standing order, payable on 1st January each year, or online bank transfer to the following account:

Account name: Mickleham and Westhumble Horticultural Society
 Sort code: 20-23-97
 Account number: 60257931

Please use your name/house as the reference and email the Membership Secretary, Judith Long, when you have paid: judith.long2@btinternet.com

2026 dates for your diary:

AGM and plant sale – Saturday 25th April
 Summer Show – Saturday 11th July

All your annoying & odd jobs fixed fast



Are you: struggling to get your odd jobs done?
lacking the necessary skills?
struggling to find the time?
lacking the correct tools?
struggling to find a reliable person?

Mickleham based
07939 131593
help@toolboxtony.co.uk

see toolboxtony.co.uk for more information on services offered

Plumbing
 Heating
 Boilers

Servicing
 Fault Finding
 Gas Work

Call 07716 269620 email luke@ljcplumbingheating.co.uk

Get IT Fixed, Get IT Connected

Expert Repair & Maintenance



Brockham based. No call out charges. Fully transparent quotations with no hidden costs. We make technology work for you.

Call us now on
01737 845980

ChalkHill Systems
www.chalkhillsystems.co.uk

DORKING PEST CONTROL SERVICES

Local Authority Approved Contractors

Our services include: wasps, bee swarms, hornets, bed bugs, fleas, flies, ants, cockroaches, rats, mice, squirrels, rabbits, moles, foxes and deer

EXPERTS IN PEST CONTROL THROUGHOUT SURREY

01306 743001 Ivor: 07710 117491 Chris: 07971 519415

Family-run business with over 30 years' experience

www.dorkingpestcontrol.com

remedial roofing

For people with roof issues and deficiencies

- New roofs – slate & tiled roof specialists
- All roof repairs, moss removal & gutter clearance
- Flat roofs, traditional felt & GRP fibreglass
- New uPVC Fascia, soffit & guttering

Obtain an up-to-date report of remedial roofing on www.checkatrade.com



ALL WORK GUARANTEED
Call us today for a FREE quotation on:
01306 304736 | 07852 833802

info@remedialroofing.co.uk www.remedialroofing.co.uk



Fantastic Response



A thank you to all our new deliverers. The editors have been delighted with the fantastic response to our appeal for multiple substitute deliverers in the November magazine to fill gaps in the delivery team. We have received volunteers for all but one of the routes we advertised. At a time of much negative news in the world, this demonstration of the impressive community feeling that exists in these two little villages felt especially positive. A heart felt thank you to all those who responded and as ever, a big thank you to all our regular deliverers too.

Mickleham Choral Society BIG RAFFLE

A special Raffle to raise funds for the MCS trip to Sinalunga. Raffle will be drawn at the MCS Burns Night event on January 24th.

Eight Fabulous Prizes:

HOLIDAY: A week in a lovely cottage in Cornwall. Sleeps 6. Off-season dates to be agreed with owner. Dogs welcome. Overlooks boats on the water and 5-minute walk from water-side pub.

BUILDERS: Three men for a day: decorating, garden clearing or similar
GATWICK AIRPORT: return lift for up to 4 people and their bags, from Box Hill area sometime in next 12 months

WORLD CLASS GUITARIST to give an hour's lesson or play for an hour at your party

SEVEN BOTTLES: Champagne, Prosecco and Wine

EXPERTLY KNITTED item for you, to be agreed with the knitter

LOVELY LARGE AUTHENTIC BASKET from France

SET OF EIGHT steel plant supports

Tickets £5 each available from Mickleham Choral Society committee

Message 07715 553961 or ring to talk to Jacqueline

Strong carrier bags needed for the magazine delivery team. If you have any to spare, please leave them on the porch of St Anthony in Pilgrims Way. Thank you!

Crib Service 4 pm Wednesday 24th December

Please join us for this year's Crib Service, all ages welcome. This is a special event where our children help us to tell the Nativity story as we progress down Adlers Lane in Westhumble from the Burney Road/Chapel Lane junction, towards the fields. We will meet shepherds keeping warm around a fire, angels and kings along the way as we celebrate and sing together.



We are looking for readers, Mary, Joseph, Three Kings, shepherds, the star, angels and a baby Jesus to help us bring this Nativity to life. Please let Elly know if you, or any young people would like to take part (and whom you would like to be):

ellyjay@gmail.com

Please wear wellies or sturdy shoes, this is a working field. Everyone is welcome and refreshments are available afterwards.



Michelle & Roberto Cleaning Services

Serving Surrey homes for 9 years – trusted by local families

Regular & one-off house cleaning • End of tenancy • Move in/out • Post-construction
Commercial (from offices to churches) • Window cleaning (inside) • Bedding changes
Laundry & ironing • Oven & fridge cleaning • Cupboard & wardrobe tidying

M: 07472 692614 E: ellechim2002@hotmail.com

Garden & Landscaping Services

Lawn mowing • Hedge cutting • Leaf clearance
Garden maintenance • Planting • Fencing
Gates • Astro Turf installation and much more...



Contact Us Today

07832 139475

E: sdgroundmaintenance@gmail.com
W: www.sdgroundmaintenance.co.uk



Mickleham based

Town Planning Consultancy

Family business winning planning
permissions for over 30 years

T: 01372 665015 M: 07767 477978

W: Horneassociates.com

E: info@horneassociates.com

ALEXANDER HOME RENOVATIONS

ELECTRICIAN

- City & Guilds Qualified & Registered with NICEIC
- Household, Garage & Garden Building rewires
- Fuseboard Consumer Unit upgrades and repairs
- Socket Outlets, Indoor & Outdoor Lighting

BATHROOM & KITCHEN INSTALLER

- Complete Design and Layout Consultations
- All Plumbing & Part P Bathroom Electrical Alterations
- Wall & Floor Tiling, Decorating & Plastering
- All Carpentry & Associated Small Building Works



MICKLEHAM-BASED • FULL PUBLIC LIABILITY INSURANCE • ALL WORKS GUARANTEED • LOCAL REFERENCES AVAILABLE
Contact Mark for free estimates and advice **M: 07831 401 439** **LANDLINE: 01372 372 780** **E: mark@ahrenovations.co.uk**



**GARBETT
& PARTNERS**

www.garbettpartners.com

Your property matters....

Garbett & Partners offer a bespoke estate
agency practice specialising throughout Surrey
and the Home Counties.

*A discreet personal service whether you are
considering selling or purchasing.*

tim@garbettpartners.com - 07831 576616

suzie@garbettpartners.com - 07979 876380



The autumn term is rich with
celebrations that help our youngest
children learn about the world around
them. We have enjoyed harvest
time, with farmers market role play,
Divali, celebrating with mehndi hand
painting, Halloween, with pumpkin
hammering, the change in seasonal
weather but keeping warm in Forest
School chopping our own wood and
taking time to remember those who
keep us safe.

As the season changes to winter, the
days grow shorter and the lights begin
to twinkle, excitement fills the air in our
Nursery. For our youngest children, the
lead-up to Christmas is a magical time
full of wonder and discovery.

Our preparation starts with storytelling.
The children gather together to listen
to the chosen nativity story. This year
from the perspective of a particularly
disorganised angel whose timekeeping
is somewhat troublesome, but luckily,
she makes it in time to spread the good

A Magical Time is Coming

news. Through role play and simple
performances, the nativity story comes
alive, children don tea towels and tinsel
crowns, transforming into shepherds,
angels, and kings. These moments not only
teach the story of Christmas but also build
confidence, cooperation, and empathy.

This year we are reminded how times
are changing, as our busy engineers of
the future construct a sleigh for Father
Christmas using our large wooden
blocks adding bells, elf costumes, and
'sockets' for EV charging!

Hilary Budd



**ST MICHAEL'S COMMUNITY NURSERY
CHRISTMAS FAIR**

★Stalls★Santa's Grotto★Children's activities★
★Adopt a Bear...and much more★

**6 December
2025**

10am - 12pm
Mickleham Village Hall, Dell Close,
RH5 6EE

Mums/Carers and Toddlers Group

**Westhumble
Chapel**

**Second Monday
of the month**

11am - 12 noon
All welcome

8th December

RGS SURREY HILLS

Now a proud member of the Reigate Grammar School Family of Schools

RGS Surrey Hills is a vibrant day and boarding school for girls and boys aged 11-18. We offer a first-class, holistic education through various educational pathways. Discover what makes us unique today.

rgs-surreyhills.org

London Road, Mickleham, Surrey RH5 6EA



LEARN MORE

Come and visit Silvermere Softplay Centre, where the joy and benefits of play are exceeded!

An accessible and inclusive space for children and young people to unleash their natural energy through movement, play, and connection with others



- Soft play sessions
- Pre-school play
- Parties

Our warm and welcoming café is the perfect space for everyone to relax and connect.

For more info and booking: www.silvermere-softplay.co.uk

Proprietors: Katie and Michael of School Lane, Mickleham



Joseph

De Decorators

- Painting • Decorating • Wallpapering • Plastering • Tiling
- Mickleham based 40 years' experience

01372 372331 07973 358 932



Morning Star Cottage

Restronguet, Cornwall

Escape to a tranquil hideaway at water's-edge with stunning creek views

- Very comfortable former fisherman's cottage
- Fully refurbished, centrally heated and with super fast broadband
- Sleeps 6, dogs welcome • wood burner • 2 bathrooms (1 en-suite)
- Private jetty and mooring
- Hire a boat/kayaks/paddle boards from the cottage
- 5 minutes' walk to the 13th century Pandora Inn

Contact Sarah Penry for more information: sarahpenry@hotmail.com 07902 758070
<http://www.cornishholidaycottages.com/property/morning-star/>



Never too cold for ice cream...

Summer may be over, but it's the perfect time for ice cream at home!

Explore exciting seasonal flavours or indulge in much-loved classics from JJ's Gelato.

Find us at Box Hill & Westhumble Station, Fridays and Saturdays 4-6pm

See our latest flavours at www.jjsgelato.com. For reservations, special requests, and event hire, email jenny@jjsgelato.com or call/WhatsApp on 07956 593520.

Celebrating Ben's Remarkable Service to Mickleham School



In the summer term, we celebrated Ben Tatham's extraordinary contribution as he stepped down from his role as school governor, a position he has held with distinction for over five decades. His unwavering commitment to Mickleham School and the wider community has shaped the school's development and spirit in countless ways.

Ben's journey began in 1970 when he was elected to Dorking Urban District Council and appointed to the school's management body. At that time, Mickleham School was a modest all-through primary with 115 pupils, including children bussed in from Box Hill. Facilities were basic: a central building, a temporary timber classroom, and outdoor toilets. School lunches were served in the village hall.

Ben brought not only civic dedication but also his professional expertise as a civil engineer. He was a passionate

advocate for good governance and high standards, never afraid to challenge decisions made without consultation. His involvement deepened through the years, especially after the 1988 Education Reform Act, which gave governors greater responsibility and financial oversight.

Throughout his tenure, Ben drafted numerous successful grant applications for building improvements and personally managed the resulting projects. His belief in the importance of routine maintenance led to the formation of a team of skilled volunteers who, under his leadership, ensured the school's buildings and grounds remained in excellent condition.

One of the most visible tributes to Ben's legacy is the school hall and library, built in 2015 and proudly named in his honour. It stands as a testament to his vision, dedication, and love for learning. Ben's contributions extend beyond bricks and mortar. His sharp wit and dry sense of humour have enlivened many meetings and conversations, and his ability to bring people together with warmth and good cheer has been a gift to all who have worked alongside him. He also authored a detailed history of the school's buildings and grounds, preserving its story for future generations.

As Ben now steps back from formal service, we offer our heartfelt thanks for his tireless commitment, wisdom, and generosity. His legacy will continue to inspire us all. Ben, we are deeply grateful for everything you have done for Mickleham School and the community. You have more than earned a well-deserved rest. Thank you.



Open Mornings

We were delighted with the success of our two recent Open Mornings. It was wonderful to welcome families into school and share the warmth, curiosity and ambition that makes our community so special. The children showcased their learning and talked so confidently about school life.

If you were unable to attend, there is still plenty of time to book a visit; we are continuing to offer individual tours and would be grateful if you could spread the word to friends, neighbours and local families who may be considering schools.

Our recent marketing campaign has also been very positive. The school flyer drop extending our reach to a much wider area, hoping to attract interest from new families across the parish and beyond.

We hope you enjoy the photographs from our marketing photo shoot, capturing the joy and energy that fill our school every day.

Nicola Cleather



Happy Christmas and prosperous New Year to our readers, contributors and advertisers

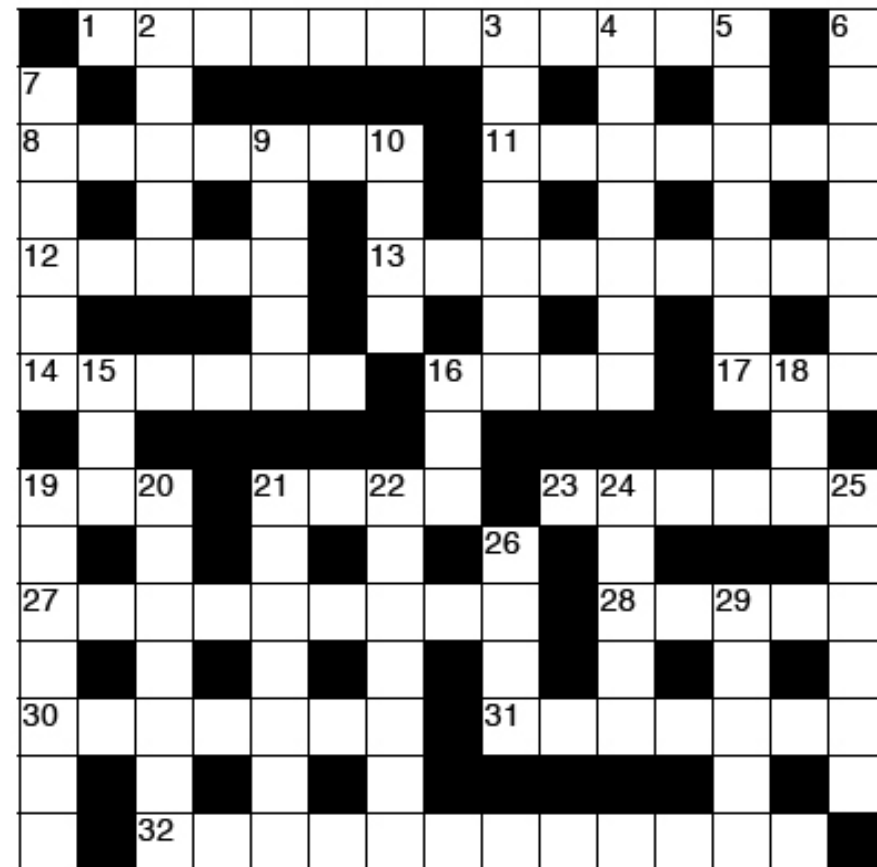
Cryptic Crossword



A seasonal crossword from the December 2015 issue compiled by the late Richard Roberts-Miller.

Across

- 1 & 8 Snow conditions reported on A30? (4,3,5,3,4)
- 8 see 1
- 11 Heads for the drinks? (7)
- 12 Element said to encourage woodworm? (5)
- 13 Appetites for variable emolument (9)
- 14 Put slip-up right for the boss (6)
- 16 Record that electricians use after 14 (4)
- 17 Name one thing that is OK in polyester! (3)
- 19 Repeat in hibiscus (3)
- 21 Arrived for morning in church (4)
- 23 Location for thought and hesitation? (6)
- 27 A nice organ work attributed to Bliss? (9)
- 28 Sailor was ejected roughly (5)
- 30 & 31 Boxing Day dinner? (5,2,7)
- 31 see 30
- 32 Useful for exercises and pub crawls? (8,4)



Down

- 2 Tree of the Spanish and German forests (5)
- 3 Is able to have a farewell musical narrative (7)
- 4 Cast genuine actress as an inexperienced girl (7)
- 5 Flexibility of modulation - play in C for example (7)
- 6 Opposes the weird sisters (7)
- 7 Where to keep endless garbage jumbled (6)
- 9 Place in a haven due if daughter leaves (5)
- 10 Negative feedback from horses? (4)
- 15 In reality a famous boxer (3)
- 16 Article in Leatherhead Advertiser (3)
- 18 Bird caught up in argument (3)
- 19 Cheese insect in a nutshell (7)
- 20 Bash on quietly about a French cure for vitamin D deficiency (7)
- 21 Dog on a hill running 23 (7)
- 22 Conscious that ones brain is almost overloaded (7)
- 24 In practice we all get old (5)
- 25 Old Trafford has small uprising (6)
- 26 Clutter in canteen (4)
- 29 Men have seized the alternative (5)

ST MICHAEL'S COMMUNITY NURSERY MICKLEHAM VILLAGE HALL

DELL CLOSE RH5 6EE

Weekdays 9.15 am - 2.45 pm (term time)

Mornings or longer sessions available

Cosy, well-resourced, pre-school nursery for 2-5 year olds.

Superb garden and forest school

Government funding accepted

Contact us for more information about admissions

01372 361021 www.stmichaelscommunitynursery.co.uk



EST. ——— The ——— XVI

RUNNING HORSES



You are sure of a warm welcome at this historic 16th century inn. Join us daily for lunch and dinner and on a Sunday bring the whole family to us for our delicious award winning Sunday roast.

We have 7 charming en-suite rooms, updated with modern facilities, named after different racecourses.

Opening Hours:

Mon-Sat 12pm-11pm / Sun 12pm-10pm

Old London Road, Mickleham, Dorking, RH5 6DU

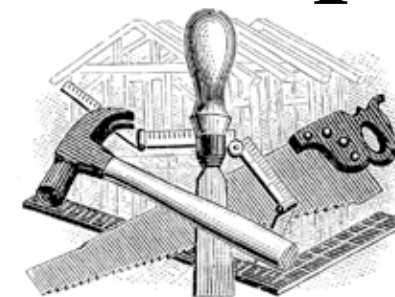
01372 388 422

bookings@therunninghorses.co.uk

J S Wilson

Mickleham

Carpentry & Building Services



Extensions ~ Conversions
Refurbishments ~ Property Maintenance
Fully guaranteed ~ Fully insured
One call WILL solve it all

Contact Jason on: 07761 926684 or 01372 379359
jswilsonconstruction@gmail.com





**RESIDENTIAL • COMMERCIAL
AGRICULTURAL • SCHOOLS • ACOUSTIC
HOARDING • GATES • SECURITY**

RICHARDSON & BRADS FENCING LTD
T: 01306 640 143 - 01483 414 745
 E: INFO@RBFENCINGLTD.CO.UK
 W: WWW.RBFENCINGLTD.CO.UK
 A: 168 SOUTH STREET, DORKING, SURREY, RH4 2ES
 UNIT 15 MARTLANDS INDUSTRIAL ESTATE, SMARTS HEATH LANE, MAYFORD, GU22 0RQ

Helping older people to live well in their own homes since 2010



- ♦ Award winning care ♦ Companionship services
- ♦ Home help services ♦ Personal care services
- ♦ Highly trained Care Professionals

If someone in your family needs a little help please contact us on
01372 741544



www.homeinstead.co.uk/epsom
Email: simon.burrowes@homeinstead.co.uk



Each Home Instead franchise is independently owned and operated. Copyright © Home Instead® 2022.



YOUR LOCAL PROFESSIONAL TREE HEALTH CARE SPECIALISTS

Felling • Pruning • Stump Removal
Planting • Woodchip • Air Spade Services
Consultancy

Call us on 01306 741800

office@treeline.co.uk
www.treeline.co.uk



**WELL-SEASONED LOGS
FREE LOCAL DELIVERY**

npd
REFURBISHMENTS

Bathrooms • Plastering • Tiling • Kitchens



We offer specialist services or complete project management including inspirational design ideas. No job is too big or too small.

What you can expect from NPD Refurbishments:

- Close attention to detail and true craftsmanship with trusted testimonials
- Use of high-quality materials yet working with suppliers to obtain the best possible prices
- Use qualified and reliable contractors where necessary
- Unlimited options and flexibility to allow changes throughout the building process
- Help and advice in selecting amenities and options you will be happy with
- Constant communication to keep aware of project status
- Down to earth approach but high level of workmanship
- A tidy job environment to minimise disruption
- An open, comprehensive and honest quote

01403 738103 07917 457286
npdrefurbishments.com

Need help with your accounts?

Running a business needs time and energy – don't waste your time working on your accounts when you can work on your business instead!

At a4c we provide fixed fee accountancy solutions with friendly support throughout the year. Services include accounts, tax returns, VAT, payroll, book-keeping etc.

Friendly, approachable and local to Dorking – we enjoy getting to know our clients so call us today for a no obligation chat.

We LOVE numbers so YOU don't have to!

01737 652852

esther@a4cgroup.co.uk
www.a4cgroup.co.uk

