

# *your* **SOLIHULL**



**Solihull**  
METROPOLITAN  
BOROUGH COUNCIL

Solihull Council's  
magazine for residents  
Spring 2020





# Charity Ball &

CARER FRIENDLY AWARDS  
2020

Nominate someone or an organisation  
in any one of our 7 categories

For further details and to make a nomination please visit: [www.solihullcarers.org/awards](http://www.solihullcarers.org/awards)  
E [centre@solihullcarers.org](mailto:centre@solihullcarers.org) T 0121 788 1143

SATURDAY 13 JUNE

VILLAGE HOTEL SHIRLEY B90 4JG

Tickets are £45 each or a table of 10 for £400

**Includes three course meal, live entertainment and a disco**



## Welcome to the spring edition of Your Solihull

With the lighter nights and hopefully warmer weather approaching, I hope many of you will be getting out and about to enjoy the wonderful surroundings Solihull has to offer. As a keen cyclist, I am really pleased to see we're offering new opportunities for adults to learn to ride a bike. Find out more on pages 8 and 9.

The improved weather also means that we'll be able to progress work on our new armed forces community garden in Hillfield Park. This is fantastic news for the borough as the garden will provide a place of relaxation and reflection for the serving military, veterans and their families. We also

hope it'll help people make new friends and not feel isolated. Read more about this exciting project on page 12.

Having a conversation is good for everyone's wellbeing and with the rise of 'chatty cafés' in the borough, I hope this will encourage people to start them. It's great to see different organisations getting on board with this regional initiative to provide a safe place for people to meet up and have a chat over a cuppa. Learn more on page 11.

This year we will be gearing up for three elections in May, so make sure you're registered to vote. Read more about what you need to do and what you'll be voting for on page 6.

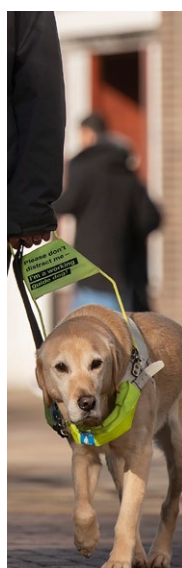
As always on pages 14 and 15, you can find details of things to do in Solihull in our 'What's On' section and the many events taking place in our parks. This includes a special commemoration event to mark 75 years since VE Day.

I hope that you enjoy this edition of Your Solihull – please let us know what you would like us to feature in future editions.

**Nick Page**  
*Chief Executive*



## Contents



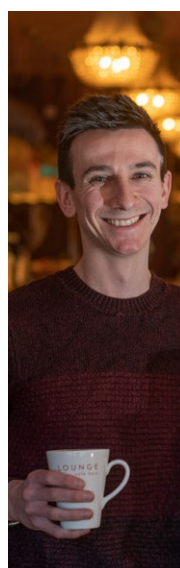
**4-7**  
News



**8-9**  
Transport round-up



**10**  
Fostering



**11**  
Chatty café



**12**  
Armed forces garden



**13**  
Spring clean



**14**  
Events

Follow Solihull Council on



Facebook



Twitter



Instagram

Email [comms@solihull.gov.uk](mailto:comms@solihull.gov.uk)

Solihull Council and partner Everyone Active have launched a new leisure card to help people on lower incomes stay active.

The card gives a 30% discount to people in receipt of certain benefits off-peak at North Solihull Sports Centre and Tudor Grange Leisure

Centre. It also gives people aged 75 and over free membership off-peak and free entry to foster carers and other carers when they are with the children and adults they care for. Children in care and care leavers get free membership until they reach 25.

Pat Smith, aged 78, said: "I've been doing aqua aerobics three times a week for five years. I was really pleased when I found out about the new leisure card as I will save a lot of money."

John Tandy, aged 80, added: "I have a really bad back so the aqua aerobics class is brilliant as I don't feel any pain when I do it. The leisure card means I can go every week for free."

For full details including off-peak times and benefits that are eligible, visit North Solihull Sports Centre, Tudor Grange Leisure Centre or go online at [www.everyoneactive.com/centre](http://www.everyoneactive.com/centre)



John and Pat at Tudor Grange Leisure Centre

### Vélo is coming

Vélo Birmingham & Midlands is returning to the region on Sunday 21 June.

Following a similar route to last year, organisers have made some small changes to improve the rider experience and minimise the impact of road closures.

The new route will avoid the north of the borough. Other changes are near Chadwick End and Illshaw Heath. A new diversion has also been introduced to the south of Knowle and Dorridge.

View an interactive map of the route here: [www.velobirmingham.com](http://www.velobirmingham.com)

### Phase 2 of School Streets under consultation

Parents of children at Widney Junior, St Andrew's Primary and Marston Green Junior schools, along with residents living close to these schools, are currently being consulted about the introduction of the Council's innovative School Streets scheme.

Representations will be considered over the coming weeks and if the proposals are given the go ahead, the schools will see the scheme start after Easter.

For more information visit [www.solihull.gov.uk/schoolstreets](http://www.solihull.gov.uk/schoolstreets)

### Play a part in #WM2041

Everyday choices make a huge difference to the planet's climate.

West Midlands Combined Authority is currently seeking people's views on proposals to improve the region's climate efforts and become carbon neutral by 2041.

To find out more about #WM2041 and to have a say go to [www.wmca.org.uk/climatechange](http://www.wmca.org.uk/climatechange)

The deadline for sharing views is midnight on Thursday 12 March 2020.



Two special bright yellow cigarette bins are being trialled on Station Drive, Olton and Marston Drive in Kingshurst.

These are the borough's first "Ballot Bins" which tackle the problem of cigarette butt litter. Funded by Love Solihull, the Council's environmental initiative supporting local communities, the bins have been shown to reduce this type of litter by almost half.

Each bin displays a question and two answers. Smokers vote by putting their cigarette butt in the slots underneath their preferred answer. The litter stacks up behind the glass front, showing the more popular answer.

Chris Dunster, Chair of Solihull's Talking Rubbish Steering Group which represents local litter picking groups, explains more about this quirky initiative: "It's a fun way to encourage people to bin their butts. Love Solihull came up with the first question but we'd like suggestions from the local community in future."



Chris with the ballot bin in Olton

People are encouraged to come up with something brief and light-hearted that people can vote on. The results will be published on Facebook – look for the Olton Literary Litter Pickers or Kingshurst Litter Pickers.

If anyone is looking to stop smoking and needs support, go to [www.solihull.gov.uk/stopsmoking](http://www.solihull.gov.uk/stopsmoking)

## Council tax now online

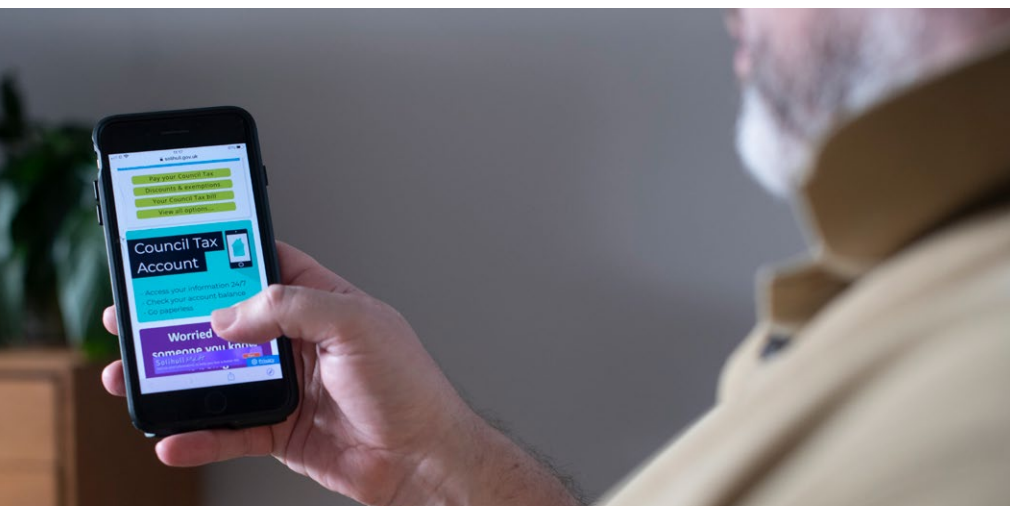
Every year Solihull Council uses about 320,000 sheets of paper to send out council tax information. That figure is set to drop as residents can now create an account to view their details online and sign up for paperless billing.

Information about the new Council Tax Account will be included in the 2020/21 bill which households are set to receive shortly.

There are two steps to signing up. First, create a customer account on the Council website. In future this can be used to access other online Council services when they are added. Second, sign up for the Council Tax Account.

Once registered, residents can check their balance, make payments, set up a direct debit and switch to paperless billing.

Anyone wanting to sign up before their council tax bill arrives can do so by visiting [www.solihull.gov.uk/counciltax](http://www.solihull.gov.uk/counciltax)



Go online for a Council Tax Account

Solihull Council has updated its Street Charter to support vulnerable road users who have difficulty seeing or hearing approaching traffic, or may have decreased mobility.

The charter highlights good practice for local businesses and residents as well as the Council's own services. This includes encouraging business owners to consider how advertising boards and street furniture (such as seating and bins) on pavements can cause difficulties for vulnerable road users. And residents are asked to be considerate when leaving their bins out.

Developed in partnership with the RNIB, Solihull Vulnerable Road Users Group and Solihull Association for the Blind, the Charter outlines the Council's offer and commitments to planning, development and management of roads, walkways and pedestrian areas.

Kenneth from the Solihull Vulnerable Road Users Group explains: "It is easy to dismiss the Street Charter as only for the benefit of those with a disability. But when my guide dog and I had to walk into a busy road to get round a car parked on the pavement, so did my grandson and his mother when

she was pushing him in his buggy. At the end of the day, every pedestrian is a vulnerable road user, so this is vital for us all."

Read the Solihull Street Charter at [www.solihull.gov.uk/improving-access](http://www.solihull.gov.uk/improving-access)



Kenneth with his guide dog Klodo and the updated Street Charter

## Get ready for the elections



Voting takes place on 7 May

This year residents will be able to vote in three different elections on Thursday 7 May. These are the local elections

(for local Solihull councillors), Mayoral (for the Mayor of the West Midlands Combined Authority) and Police and

Crime Commissioner (for the West Midlands Police and Crime Commissioner).

In order to vote in these elections, residents must be on the electoral register. If people voted in the last election and personal details have not changed, they will still be registered to vote.

To register, go to [www.gov.uk/register-to-vote](http://www.gov.uk/register-to-vote) – applications must be in by midnight on Tuesday 21 April.

If in doubt about registration, check with Solihull Council's Electoral Services team on 0121 704 6042 or email [electoralservices@solihull.gov.uk](mailto:electoralservices@solihull.gov.uk)



Since 2013, bereavement-related charities in Solihull have benefited from a share of £67,000 – money raised by the Council from recycling metals from cremations.

Solihull Council is part of the Institute of Cemetery and Crematorium Management (ICCM) Recycling of Metals Scheme. This means that when cremations take place at Robin

Hood and Woodlands cemeteries, the metals are sent to the ICCM. They recycle them and turn the value of the recycled materials into money, which is given to the Council.



Liz with the donation for Solihull Sands

Solihull Sands is the latest beneficiary of the scheme, receiving £8,000 to support families who have experienced stillbirth or a baby dying shortly after birth. It is the local branch of the national charity, specifically supporting people living in the borough.

Liz is a volunteer 'befriender' at Solihull Sands, helping people through this sad and difficult time. She said: "We are delighted to receive this donation. It will make a huge difference to the work we do and the support we provide to families going through bereavement."

All of the materials recycled are only processed with the written consent of each bereaved family.

## Learning about the bulbs and the bees

School children across the borough have been planting bulbs as part of Wildlife Ways – a project which aims to make Solihull greener for the benefit of people and wildlife.

Pupils from Monkspath Junior & Infants, St Anthony's RC Primary, St Augustine's Catholic Primary and Yorkswood Primary planted the bulbs with help from staff from the Wildlife Ways project and Solihull Council in Babbs Mill Park, Hillfield Local Nature Reserve and Tudor Grange Park.

The bulb planting activities gave the children the chance to learn about bulbs and the environment – and have some fun too.

In its first year, Wildlife Ways has already seen 2.7 million bulbs planted

across the borough. As well as bringing a splash of colour in the spring, the crocuses, daffodils and snowdrops will support pollinating insects, such as bees, which have been in decline in recent years.

Wildlife Ways is a £16.8 million project – part-funded by the European Regional Development Fund. For more information visit [www.wildlifeways.co.uk](http://www.wildlifeways.co.uk)



Gabrielle, Kaden and Amber from St Anthony's RC Primary School in Babbs Mill Park

Cycling and walking are recognised as important ways to reduce congestion, improve air quality and enhance physical and mental health.

Both have the real potential to enhance the vibrancy and special character of Solihull.

To support the borough's climate change agenda and transport strategy 'Solihull Connected' – a new borough-

wide cycling and walking strategy is currently being developed.

In February a draft summary of the document along with a questionnaire was shared with Solihull residents.

The questionnaire sought to better understand some of the barriers to cycling and walking and help identify some priority areas for investment in cycling infrastructure. The feedback

from this will be used to help shape the emerging strategy.

To find out more about the Solihull Cycling and Walking Strategy visit: [www.solihull.gov.uk/solihullconnected](http://www.solihull.gov.uk/solihullconnected)

Let's take a look at what is already being done to encourage cycling and walking in Solihull...

## Step into Solihull

Solihull Active offers a range of walks depending on people's current level of activity. Find out more about the Step into Solihull walking programme here: [www.solihullactive.co.uk/walking-in-solihull](http://www.solihullactive.co.uk/walking-in-solihull)

New volunteers are needed for the walking programme. Anyone who enjoys walking and can regularly attend sessions could help existing volunteers to lead walks across the borough.

For more information go to: [www.solihullactive.co.uk/walking-in-solihull](http://www.solihullactive.co.uk/walking-in-solihull)

## Making ways to get around

One of the ways the Council is trying to encourage people to walk and cycle more is by making it easier and more enjoyable.

Wildlife Ways started in earnest a year ago and part of the project aims to encourage people to walk and cycle across the borough. It's doing this by enhancing existing paths and creating new shared paths.

The £16.8 million project – part-financed by the European Regional Development Fund – has already created nine kilometres of shared paths. Over the next couple of years another 14 kilometres of cycle routes and shared paths will be made.

This is in addition to giving wildlife a much needed boost through planting trees and flowers and improving open spaces.

Find out more at [www.wildlifeways.co.uk](http://www.wildlifeways.co.uk)



# Gearing up to cycle

Free cycling activities are on offer at a new Bike Hub, based at North Solihull Sports Centre, thanks to the Active Communities initiative led by Solihull Council and The Active Wellbeing Society in Birmingham.

The weekly Learn to Ride sessions and leisure rides are aimed at beginners, people wanting to increase their cycling confidence and those who don't usually get the chance to cycle. The Active Wellbeing Society is looking to train volunteers within the local community to enable groups to access the equipment.

Sarah from Kingshurst has been along to the free Learn to Ride session for adults. She explains: "I can't drive so I thought I'd give the sessions a try. When I'm better at this I want

to take my daughter out and get her cycling too."

Sarah admits her first attempt at cycling was 'shocking' because she had no balance and had never been on a bike before. "It can be quite embarrassing as an adult to admit you can't ride," she adds. "But you're never too old to learn." And with

support from the qualified instructors Sarah's confidence is building each week.

Learn to Ride sessions take place on Thursdays at 1pm. For more information search 'adults learn to ride' on Facebook or email [bigbirminghambikes@theaws.org](mailto:bigbirminghambikes@theaws.org)

The Bike Hub is delivered by the Big Bike Project and funded by Sport England.





# Fostering milestone for Solihull woman

Susan, 63, has been fostering for Solihull Council for three decades and, along with her partner Bob, has cared for hundreds of the borough's looked after children.

Talking about how she came to be a foster carer, Susan said: "My mother fostered children after I had left home. I was training to become a police officer and saw a poster about fostering in the police station. I realised that looking after children was what I wanted to do in life."

In recent years, Susan's placements have tended to be teenage boys, and she says she wouldn't have it any other way:

"All they want is for someone to care for them and provide them with a nice home environment. I always give them a key to my home, no matter what circumstances they have come to me

in. This shows them that I trust them and they respect me for that, which gets us off to a good start."

Abdul Malikzada, 27, who was fostered by Susan said: "Susan took care of me when I needed it the most and made me into a caring, sensible person. When I came to the UK 13 years ago I had nothing and no-one. She gave me so much love."

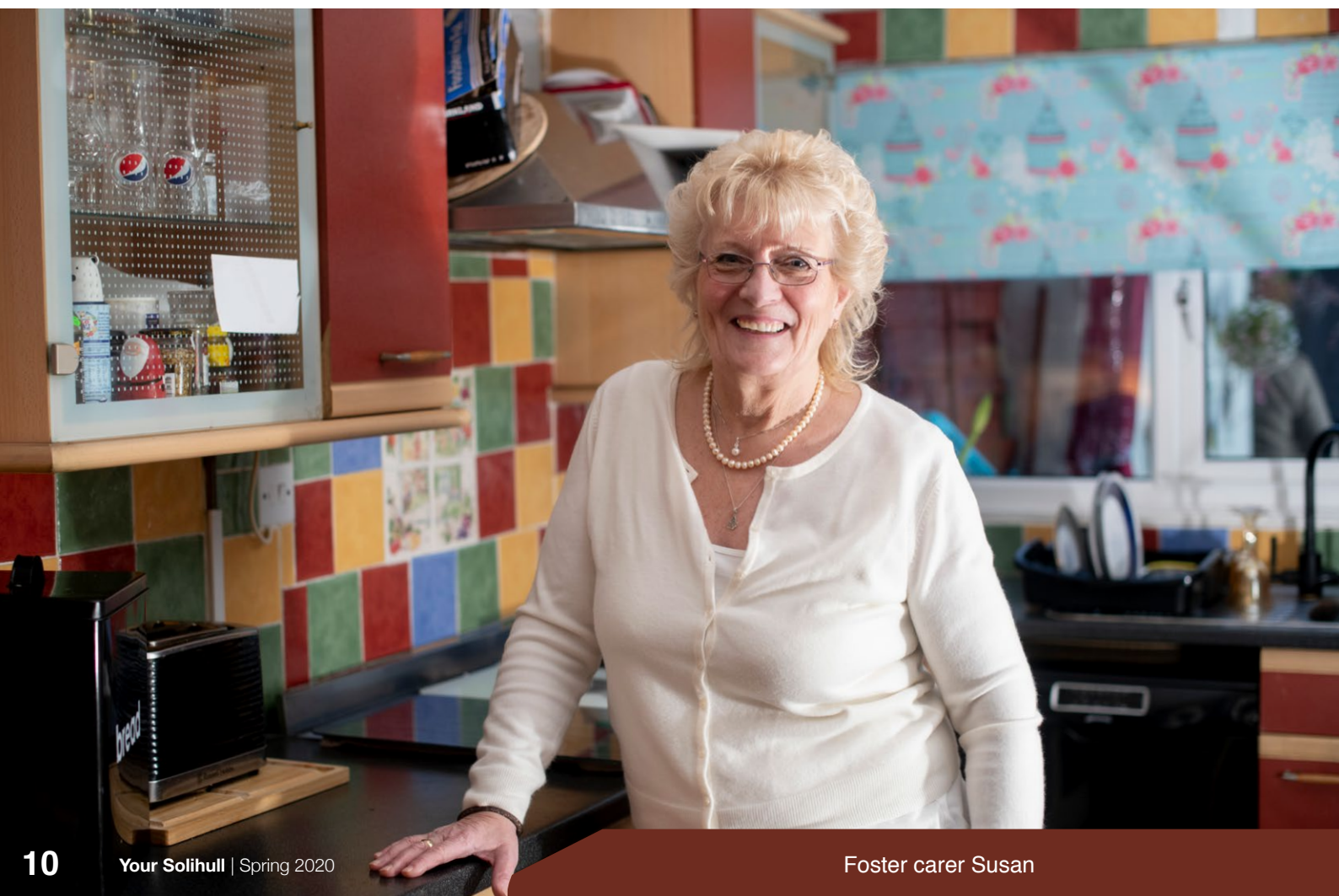
Thomas Randall, 38, who was also fostered by Susan added: "Massive congratulations to Susan on celebrating 30 years as a foster carer. I had the privilege of being raised by her and she made me the gentleman I am today."

Susan says that her staying power is largely due to the support that she has received from Solihull Council over the years:

"I have been approached by many different fostering agencies but I've never been tempted to stray from the Council. I feel safe and supported and have a great working relationship with the fostering team – this has been consistent during my 30 years as a carer."

When asked if she'll continue fostering, Susan commented: "If I still have as much enthusiasm as I do today, I'll keep going until I'm 70! Being a foster carer has been the most rewarding role I could have imagined and I would thoroughly recommend it to anyone considering starting that journey."

If you think you could foster for Solihull Council, please call 0121 788 4253, visit [www.solihull.gov.uk/fostering](http://www.solihull.gov.uk/fostering) and sign up to the Stay Connected bulletins at [www.solihull.gov.uk/stayconnected](http://www.solihull.gov.uk/stayconnected)





# Chatter and natter



Owen with Amy Hubbard from Solihull BID, at the Chatter & Natter table

Conversation is important for everyone's wellbeing. Research by Age UK shows that keeping socially active helps maintain good physical and mental health and also supports thinking skills.

Local high streets and cafés are places that bring people together. But sometimes people need a bit of help to make new connections.

The Chatty Café scheme is encouraging businesses to offer 'Chatter & Natter' tables, providing people with somewhere to have a conversation. So far, 15 local cafés have signed up, supported by the West Midlands Mayor and Solihull BID.

Paramo Lounge on Solihull High Street hosted the local Chatty Café launch last year. Owen Dobson, General

Manager of Paramo Lounge, explains why they got involved and how the scheme works.

"We support a number of initiatives to help community connections and our staff are encouraged to talk to customers so it's easy to do this. It costs our business just £10 a year and we got a welcome pack with Chatter & Natter posters, stickers and signs. We always have one Chatter & Natter table near the front door but not everyone notices the blue sign which explains more about the scheme.

"I talk to people who use the table and see if they've come in for a chat. One day two older ladies came in separately, sat at the table and started a conversation. That's what we're hoping to see more of."

The scheme is looking for more cafés across the borough to sign up. To find the nearest Chatty Café or to join the scheme go to:  
[thechattycafescheme.co.uk](http://thechattycafescheme.co.uk)

## What to do at a Chatty Café

- Look for the Chatter & Natter table and sit there.
- Stay and have a drink.
- It's not about making friends. It's just about having a conversation.

# Garden gets the green light



Elaine, Albert and Lloyd on the site where the armed forces community garden will be created

Veterans and their family members, local schools and other members of the community will soon benefit from a place of remembrance and reflection in Hillfield Park.

The Council has been awarded £20,000 to create an armed forces community garden thanks to a grant from the Armed Forces Covenant Fund Trust.

As well as being a peaceful sanctuary, it is hoped the garden will also be somewhere to help people overcome isolation, as it will provide a welcoming place to meet up and interact with others.

The Council's environmental initiative Love Solihull drafted the garden's initial concept, with support from the Royal British Legion, local veterans and serving personnel, army medical teams and local community groups.

It will involve turning a barren patch of land into a usable outdoor space that will be unique to the borough. There will be seating areas, planters, disabled access pathways, herbaceous borders, colourful plants and tall grasses.

D-Day veteran Albert Price lives near to the park in Monkspath. He said: "This is really wonderful news. I shall look forward to seeing the garden take shape and walking down to the park to enjoy the new surroundings."

Lloyd Bagshaw is currently a Senior Warrant Officer with the Army Reserve and is a keen advocate of helping military personnel with their physical and mental needs. He thinks the garden will be a huge benefit saying: "These people put their lives on the line for our country, so it's important we support them. I personally know that having a place to relax and reflect will be most welcome."

Local resident Elaine Butler, President of Warwickshire and Birmingham Royal British Legion County, has been a strong supporter of the bid for funding. She added: "The Royal British Legion is here to help members of the Royal Navy, British Army, Royal Air Force, veterans and their families every day of the week. We have listened to the needs of these people and their feedback has been incorporated into the garden design. This garden will be a huge benefit to the whole armed forces community so I'm delighted that it is being created in one of our local parks."

Ground work on the garden will take place over the next few months with the planting set to commence in the summer, weather permitting.

Keep an eye out for updates on the project by following Solihull Council and Love Solihull on Twitter and Instagram.



# Get involved with the #GBSpringClean

It's that time of year again – the Great British (GB) Spring Clean is back!

This spring clean is on a slightly larger scale than cleaning behind the sofa though; with the campaign for 2020 encouraging people to get out and about in their community to help keep the country beautiful as we head towards summer.

The campaign, organised by Keep Britain Tidy, will take place from 20 March until 23 April. In 2019, over 563,163 people nationally, including 175,055 students, volunteered their time to take part – the biggest number ever.

The Council's Love Solihull team is proud to be taking part in #GBSpringClean for another year, which aims to inspire people to work in partnership with community organisations, businesses and schools to collect litter from Britain's streets.

During last year's #GBSpringClean Solihull Council supported 49 volunteer groups, community groups, parish councils and businesses to lead on their own litter picks. Since then the Love Solihull team has supported even more community groups to establish regular litter picks in their community.

One of these groups is the Castle Bromwich Litter Pickers, who have just picked their 2,000th bag of litter in just over two years. This is an amazing achievement and shows their commitment to keeping the borough clean. They meet at the Crafty Cow craft shop on The Green in Castle Bromwich every Monday at 1.30pm.

Ian Whittle from the group said that they were "delighted" to be involved with the #GBSpringClean campaign: "The Spring Clean campaign is so important in cleaning up our borough. Litter picking helps our environment,

it's a great way to socialise and it also removes hazards for wildlife. With 2,000 bags done here at Castle Bromwich Litter Pickers we're very keen to help with this campaign and hopefully we'll be hitting 3,000 bags soon!"

Love Solihull also supports groups who are wishing to litter pick on a regular basis throughout the year. They can help any groups that want to get involved and can offer assistance with the organisation and promotion of events, or with a loan of equipment.

If anybody is interested in setting up their own litter-picking event please get in touch with the team for more details by emailing [lovesolihull@solihull.gov.uk](mailto:lovesolihull@solihull.gov.uk)





# A cracking line up of events



Martin, Ken, Kerrie, Karen and Nicola get ready for the VE Day celebrations

To celebrate the 75th anniversary of VE Day, Solihull Council, along with local businesses and community groups, is having a party – and everyone's invited! The event takes place in Shirley Park, Saturday 9 May, 12 noon – 7pm, with contributors including Shirley Lions, Royal British Legion, Camp Hill Rugby Club, the Friends of Shirley Park and Extracare.

Entertainment includes performances from bands and artistes throughout the day; an event arena with dance and military displays; children's activities; community stalls; treasure trail around the park and 1940's themed demonstrations and workshops. The Mayor of Solihull will officially open the event.

Digbeth Dining Club will be serving the finest locally-produced street food,

with refreshments also available at the Rugby Club, Royal British Legion and elsewhere on site. Visitors can bring picnics and enjoy the street party atmosphere. Entrance to the event is free with charges for some attractions.

In April, two Easter events return to keep children entertained during the school holidays.

The Easter Egg Hunt at Elmdon Park moves from its usual date of Good Friday to Thursday 9 April, 11am – 3pm. Follow the trail to win a chocolate egg and enjoy entertainment including rides, Punch and Judy shows, face painting and crafts. Entrance is £2 per child and the event takes place by the car park on Tanhouse Farm Road.

Dizzy Duck Race is at Babb's Mill Local Nature Reserve (LNR) on Wednesday 15 April. Pick a duck and follow its progress along the river as it races towards the finish line. Registration starts from 10.30am and the race starts at 11am. It is £1 per person per duck, with prizes for the first three finishers.

For more information visit [www.solihull.gov.uk/events](http://www.solihull.gov.uk/events). Alternatively, why not subscribe to the Stay Connected news bulletin for regular updates on events taking place in Solihull? Simply visit [www.solihull.gov.uk](http://www.solihull.gov.uk), click on the Stay Connected icon at the foot of the home page, follow the instructions and select 'Events', along with any other topics which may be of interest.





March

## Don't Panic!

The Core Theatre  
Thursday 5 March  
7.30pm

The nation's only tribute to the long running hit comedy television series, Dad's Army. Ideal for all audiences, this light-hearted, laugh-along, sing-along comedy show is a sure fire hit with audiences young and old. Tickets: £21

## Grassland Management

Brueton Park LNR  
Sunday 8 March  
Times to be agreed

Join the Conservation Volunteers in maintaining local green spaces on alternate Sundays. For more information, visit [www.solihullcv.org.uk](http://www.solihullcv.org.uk) or to register, either email [davidcollins1@aol.com](mailto:davidcollins1@aol.com) or ring Dave Fernie on 0121 459 1697.

## Wild Food Foraging

Elmdon Park  
Saturday 21 March  
12 noon – 3.30pm

Session includes introductory talk, foraging walk and light lunch. Cost is £50 per adult, £25 per child aged 12-16 and free for under 12s. For more information and to book visit [www.wildfooduk.com](http://www.wildfooduk.com)



April

## Parkridge Centre events

The Parkridge Centre, Brueton Park  
Weekdays from Monday 6 – Friday 17 April inclusive

### Various times

Join Warwickshire Wildlife Trust at these Easter events, suitable for children aged 0-6. Entrance is £4 per child. For more information email [enquiries@wkwat.org.uk](mailto:enquiries@wkwat.org.uk) or to book tickets go to [www.warwickshirewildlifetrust.org.uk](http://www.warwickshirewildlifetrust.org.uk)

## Spring Craft Fair

High Street and Mill Lane, Solihull  
Saturday 25 April  
9am – 5.30pm

This market showcases the work of local artists and jewellery designers, as well as artefacts from overseas. Clothing, garden furniture and street food are also available. For more information, visit [www.sketts.co.uk](http://www.sketts.co.uk)

## Digbeth Dining Club

Malvern Park  
Saturday 25 April  
12 noon – 7pm

Digbeth Dining Club returns to Solihull, offering the best local street food traders, fully stocked bars and resident DJs playing all day! For more information and to book tickets, visit [digbethdiningclub.com](http://digbethdiningclub.com)



May

## Robert Wilkinson's Funfair

Meriden Park  
Thursday 7 – Sunday 10 May  
Weekdays, 4pm – 8.30pm  
Sat & Sun, 1pm – 8.30pm

Rides for all ages, chances to win prizes and refreshments. £1 per person admission – children's rides cost £1 each and adult rides except the bumper cars are £1.50. For more information email [robertwilkinson888@gmail.com](mailto:robertwilkinson888@gmail.com)

## VE Day celebrations at the Core Theatre

Friday 8 May, times tbc

Street party-themed activities for this specially created VE Day holiday, including music from The Boogaloo Babes, plus food and much more! For accurate timings and full details, visit [www.thecoretheatresolihull.co.uk](http://www.thecoretheatresolihull.co.uk)

## The Woof Run

Brueton Park LNR  
Sunday 17 May  
12 noon – 3pm

Organised by St Basil's, this sponsored obstacle course for dogs and their owners features numerous wet and muddy challenges. Registration is £10 per dog with proceeds going to St Basil's. For more information visit [www.stbasils.org.uk/solihullwoofrun](http://www.stbasils.org.uk/solihullwoofrun)



## Markets

The Farmer's Market is on the High Street and Mill Lane in Solihull town centre on the first Friday of each month, 9am – 5pm. The Fine and Local Food Fayre takes place in Mell Square on the third Saturday of each month, 9am – 5.30pm. For more information visit [www.sketts.co.uk](http://www.sketts.co.uk)

For The Core Theatre events visit [www.thecoretheatresolihull.co.uk](http://www.thecoretheatresolihull.co.uk) email [thecoretheatre@solihull.gov.uk](mailto:thecoretheatre@solihull.gov.uk) or call the box office on 0121 704 6962.

To find out more about park events visit [www.solihull.gov.uk/events](http://www.solihull.gov.uk/events)

To receive regular email bulletins about events across the borough sign up at [www.solihull.gov.uk/stayconnected](http://www.solihull.gov.uk/stayconnected)



# SOLIHULL BookFest

Saturday 6th June 2020

Meet your favourite authors and  
discover astonishing stories

Interactive book events for 0-12 year olds.

All day at The Core Solihull, Touchwood B91 3RG

THE CORE  
theatre solihull



- Aardman Model Making Workshops
- Martin Brown's *Horrible Histories* Draw-Along
- *Lesser Spotted Animals*
- Science Magician Dr Matt Pritchard
- *The Owl Who Was Afraid of the Dark* drama
- *Alice and the Library Tree* with B'Opera
- Graham Jones *Time Travelling Toby*
- Make Your Own Comic workshop
- *Tiger Who Came to Tea* Tea Parties

...plus art, live poetry and fun!

BOX OFFICE: 0121 704 6962  
[www.solihullbookfest.com](http://www.solihullbookfest.com)

