



Newsletter February 2024

New plaque to commemorate the community involvement in the restoration of the gardens

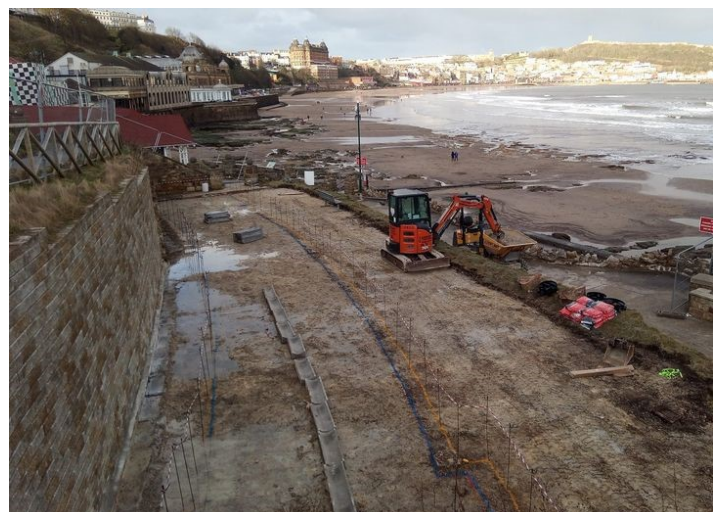


The plaque can be found in the large shelter at the northern end of the Italian Gardens



Work started on Beach Chalets below Clock Cafe

The chalets should be completed and be ready to be handed over for the summer tourist season 2024. By working in the winter months (which in the coastal location is far from ideal!) it is hoped to minimise disruption to nearby businesses as well as chalet and garden users.



Coffee Morning at Beeforth's Hive
Pop in for a brew and a natter.

Tuesday 6th February

10am - 12noon

A hand holding a white coffee cup against a sunset background. The sun is low on the horizon, creating a warm orange glow. The hand is wearing a black bracelet. The background shows a body of water with bokeh light effects.

Everyone welcome

Report from Gemma about activities around the gardens

January 26 @ 1:00 pm - 2:00 pm and January 28 @ 11:00 am - 12:00 pm

RSPB Big Garden Birdwatch

It's time for the RSPB Big Garden Birdwatch and our feathered friends need you! Could you spend an hour counting the birds in South Cliff Gardens? You can take part any time between 26th - 28th January simply by signing up on the RSPB website and following their instructions

January 31 @ 1:00 pm - 3:00 pm

Crafts with a View

Crafts with a View is back for a new year of making fun at Beeforth's Hive. Join Laura as we try a variety of free crafting activities. This is a relaxed and social session, all skill levels welcome. All materials supplied. No need to book just drop in any time between 1pm -3pm.

February 6 @ 10:00 am - 12:00 pm

Brew with a View – Coffee Morning at Beeforth's Hive

Join us for a relaxing brew with a view at Beeforth's Hive. Drop in any time between 10am – 12pm the first Tuesday of every month. Everyone welcome.

February 10 @ 1:00 pm - 3:00 pm

Chinese New Year – Free Drop In Family Crafts

Celebrate the year of the Dragon with free Chinese New Year inspired crafts at the Hive. Free, drop in family event. No booking required. All children must be accompanied by an adult.

February 11 @ 1:00 pm - 3:00 pm and February 18 @ 1:00 pm - 3:00 pm

Wildcats – Family Nature Craft Session

The wonderful Wildcats are back for more nature crafting fun in Beeforth's Hive. Everyone is welcome to join in and get creative with this free drop in session where a wide range of natural and reclaimed materials will be available to spark the imagination. What will you be inspired to make?

February 13 @ 1:00 pm - 3:00 pm

Go Wild – Nature Themed Crafts and Activities at Beeforth's Hive

Go Wild is back. Join us at Beeforth's Hive for a fun filled drop in craft and activity session inspired by nature and the environment. This time we will be exploring the weird and wonderful world of weather. This is a free event, no need to book. All children must be accompanied.

February 16 @ 1:00 pm - 3:00 pm

Busy Bees Family Crafts at Beeforth's Hive

Get busy at the Hive with this free drop in family craft session. This time we will be making fab puppets to take home and Kate will be on hand for story telling fun. All children must be accompanied by an adult.

The police stress that it is essential if you witness misbehaviour that you report it to the police. Don't rely on others, the more people making reports, the more chance that action will be taken. You can also contact the area PCSO, Ian Fewster

lan.fewster@northyorkshire.police.uk



Is it an emergency?

Does it feel like the situation could get heated or violent very soon? Is someone in immediate danger? Do you need support right away? If so, please call 999 now.

Antisocial behaviour takes many forms.

From aggressive, noisy or abusive behaviour to neighbourhood disturbances involving alcohol, drugs or animals.

If you've witnessed anti-social behaviour, please report it.

Reports are dealt with by the control room in exactly the same way whether you report it online or call 101. Click on the QR code to report online or

www.northyorkshire.police.uk/ro/report/asb/asb-v3/report-antisocial-behaviour/

