

Ashendon Sewage Works – Fencing Works

On Monday 27th July a concerned resident brought to Ashendon Parish Council's attention that Thames Water intended to install new fencing at the sewage pumping station below East Farm. Work was to be commence on **Wednesday 29th July**.

The planned work involved clearance of all the trees, hedgerow and scrub that currently screen the site. This would leave the pumping station in full view.

Members of the Parish Council felt that this would have an adverse impact on views from, and of, the village including the conservation area. It was also felt that the potential environmental impact was disproportionate to the purpose of the work. The other concern was that the largest and oldest tree due to be felled was an Ash tree.

Time was of the essence and we contacted Bucks Unitary Council, through our councillor Paul Irwin, who took swift action and the Directorate for Planning and Environment took up the case. Their help and advice meant that by the end of Monday 27th July we were in contact with the Thames Water Ecologist who raised an internal investigation. **On Tuesday 28th** Council Tree Officers got involved and visited the site, and subsequent conversations with the Thames Water Project Manager concluded that the work was necessary but could be done more sympathetically. The decision was made to reconsider the plan in consultation with village representatives.

So, on **Wednesday 29th**, instead of chainsaws arriving, members of Parish Council and a local resident met with the Contracts Manager (representing Thames Water), on site and had a very productive meeting.

In addition, the Contracts Manager held further discussions with the two land owners who both kindly agreed to permit additional land to be used in order to reposition the new fence and so protect the root system of the Ash tree and to enable additional planting.

The outcome is a very changed proposal, that will retain most of the trees (including the Ash), screen-fencing and a replanting programme where two smaller trees may need to be removed and scrub clearance work is essential.

This proposal details:

- A strip of native shrub planting to compensate for the tree removal
- A timber screen to act as immediate screening whilst the shrubs grow
- A revised line of below ground fencing, enabling the southerly corner of the compounds trees to remain
- The Ash tree mitigation measures

So, all in all, concerned residents, parish councillors, Bucks Unitary Council representatives and staff, Thames Water and their contractors, together with the local land owners have achieved a really positive outcome in **just 3 days**.

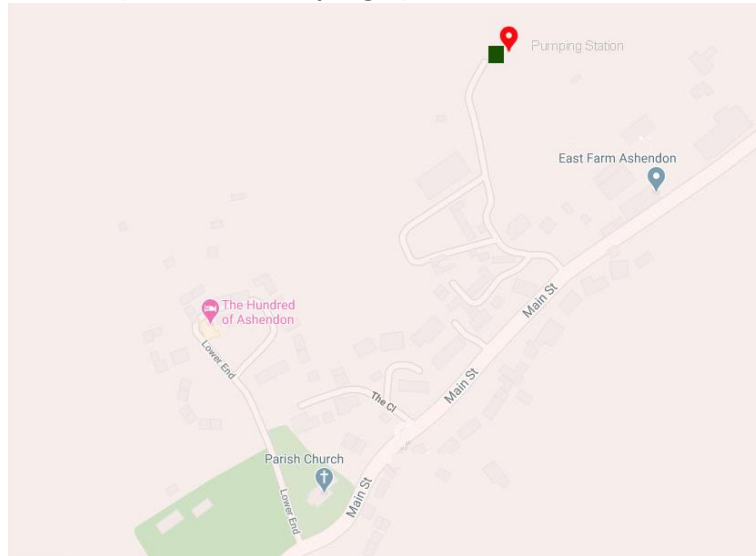
The plans are available on the Ashendon Parish Council Website:

<http://www.ashendonparish.org.uk/community/ashendon-parish-council-10421/home/>

Any comments regarding these plans must be submitted by Monday 3rd August to Kevin Nash – Chair, Ashendon Parish Council (kevinpnash@yahoo.co.uk)

Final site meeting and approval of detail plans will be held on Tuesday 4th August.

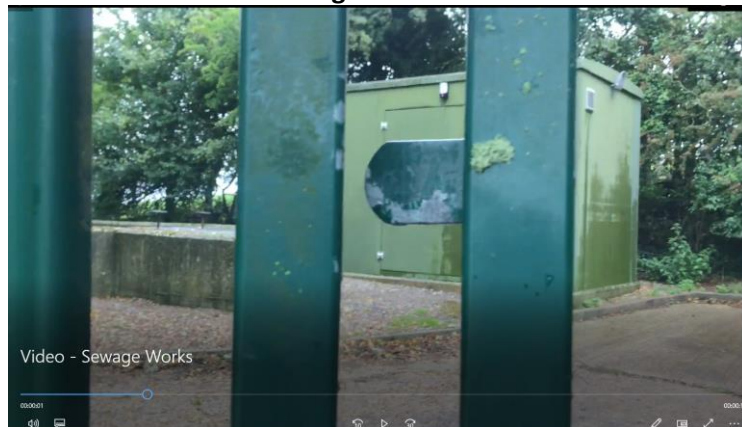
Location (Red Marker, Top Right)



Current View With Tree and Hedgerow Screening



What Lies Behind Screening



What Lies Behind Screening

