

MICKLEHAM PARISH Magazine

A community magazine for Mickleham and Westhumble



May 2017

TRUGREEN®

Professional LawnCare

A lawn is never JUST a lawn

- Fertilisation • Weed and moss control
- Aeration • Scarification • Insect control
- Disease treatment • Hard surface weed control

Call now for a free LawnCare Analysis

01306 644886

TruGreen (Epsom)

Michael Beecheno

The Cottage, Pilgrims Way, Westhumble

Starting at just £20 per treatment

A Service **MASTER** BRAND



The Safe Pair of hands

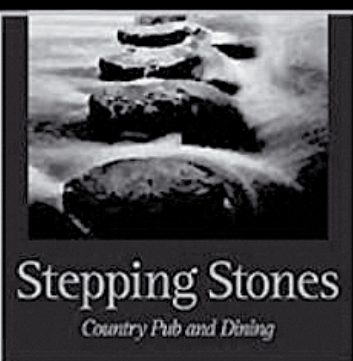
**Tax • Accounts • Probate
Inheritance Tax & Executorship**

For advice, please call us on: **01306 880880**

or email: partners@bullimores.co.uk

www.bullimores.co.uk

Bullimores LLP licenced to carry on out the reserved legal activity of non-contentious probate in England & Wales by the ICAEW



**STEAK NIGHT
EVERY TUESDAY
TWO COURSE MEAL
GLASS OF WINE
£19**

Food Served All Day – Free Wi-Fi
Walkers – Muddy Boots – Cyclists – Families and dogs
All welcome

*Lovely function room available for
meetings, family and business events*

Near Box Hill and Westhumble Station
01306 889932 www.steppingstonesdorking.com
steppingstonespub@gmail.com



**Please see
website
for
special
events**

Sherlock Funeral Service

*Sherlock Funeral Service is an
Independent family owned business,
established over 100 years*

- Private Service Chapel & Rest Rooms
- Home visits arranged if required
- Pre-Paid Funeral Plans available
- Free Parking

Telephone: 01306 882266

Trellis House, 190 South Street, Dorking RH4 2ES.

Email: office@sherlockandsons.co.uk



Funeral Directors & Monumental Masons

MICKLEHAM PARISH Magazine

May
2017

Mickleham Parish Magazine

A community magazine for Mickleham and Westhumble, published under the auspices of Mickleham PCC, with an independent editorial panel.

The magazine is published at the beginning of each month, except January and August.

**COPY DEADLINE
FOR THE
JUNE 2017
MAGAZINE
Sunday
7th May**

send to:

Sue Tatham
St Anthony, Pilgrim's Way
Westhumble
Dorking RH5 6AW
01306 882547
sue@thetathamss.co.uk

Contributions in any form are welcome, as are good quality photographs. There is no charge for advertising local charity and community events. However, the editors reserve the right to shorten, omit or reformat articles submitted for publication, depending on space.



Printed by Bishops Printers,
Portsmouth

Mickleham Rectory

Dear friends

May 21st is the 6th Sunday of Easter, but is also known as ROGATION SUNDAY. Rogation Days were traditionally days of prayer and fasting in Western Christianity and are named from the Latin ROGARE = to ask. The ceremony replaced a pagan Roman procession (Robigalia) at which a dog was sacrificed to propitiate the deity of agricultural disease. Not sure why a dog was involved, but just to say that the sacrifice of such animals did not continue under Christianity!

As the years passed, Rogation Days became a time when farmers had their crops blessed by the priest – at a time when a failed harvest meant disaster for the farmer and the local community. This was later linked with a 'beating of the bounds' when parishioners, led by the priest, churchwardens and choir, would process around the boundary of their parish and pray for its protection in the coming year.

Whilst it was officially ordered that the entire congregation attended, bishops began urging their priests to invite only 'older and more pious men' as in some parishes the event had turned into a drunken revelry. I wonder how many 'older and more pious men' could be found in Mickleham today?

This traditional has been largely lost in many parts of Britain today, but it still flourishes in some of our more rural areas. However, the need to ask for God's blessing on our lives (even if we are not involved in farming) is still very relevant though we must make sure that we do not see God as merely someone who will meet all our wants.

Genuine prayer will always be about the ACTS of prayer:

- A Adoration – praising God for who he is
- C Confession – owning up to our faults and failings
- T Thanksgiving – thanking God for the many blessings that come our way. This, in turn, should lead to our being generous towards others

Only then ...

- S Supplication – asking God to bless us and those around us; to meet our needs and not necessarily our wants.

With best wishes

Malcolm

Malcolm, our Parish Priest, is more than happy to visit people in the parish (with or without church links) to discuss pastoral and/or spiritual matters. He is also happy to offer home communion to those not able to attend church on a regular basis. Just contact him.

Leatherhead Church Flower Festival

May 5th, 6th, 7th For details see page 19.



JOIN US FOR BREAKFAST

THE RUNNING HORSES
9 – 10 A.M.

Please book by the Tuesday before

MEN'S BREAKFASTS

THIRD SATURDAYS
20th May

Book with: Andy Diamond
diamo1@hotmail.co.uk

WOMEN'S BREAKFASTS

FOURTH SATURDAYS
27th MAY

Book with: Jenny Hudlass*
01306 886044
jennyhudlass@sky.com
* May only

Tea

FOURTH MONDAYS

Monday 22nd May

Host: Maggie Lloyd

Chapel Cottage, Chapel Lane
ALL WELCOME
TRANSPORT AVAILABLE



Fairtrade Stall

Sunday 7th May
In St Michael's after
10 o'clock service

Traidcraft offer an extensive
range of very good quality craft
items. Catalogues available or
view online at

www.traidcraftshop.co.uk

Alison Wood 01372 376443
Amanda Wadsworth 01306 743164

A Prayer Spaces Experience

Thursday 23rd March saw some of the members of the Thursday Bible Study Group exchange their comfort zone with coffee and biscuits at Abbots Cottage for a morning in Church with the children from St Michael's School. We 'volunteered' two or three weeks earlier when Malcolm and Sue used their very effective arm twisting skills to persuade us all that it would be 'fun' and we would all enjoy the experience. When the morning arrived we all gathered at the church to be briefed about the session. We were all wondering what on earth we had let ourselves in for, especially when Sue began talking about making 'friends' out of pipe cleaners! Thanks to very good preparation by Malcolm and Sue and some, 'this is one I made earlier' and a run through the programme, we were ready and prepared for the first children when they arrived.

The school was divided into three classes each of which was then divided into three groups for the various activities that had been arranged. As one class finished another arrived to take their place, all of which worked surprisingly well.

The morning sessions were to enable the children to learn about four incidents in the last week of Jesus' life:

- Palm Sunday (Joy)

This focused on the Palm Sunday story. Once Malcolm had told the story we all processed up the aisle waving the palm leaves the children had made earlier in the week, singing a song that they had learnt which went to the tune of the drunken sailor. First challenge was to sing the right words!

- Last Supper (Friendship)

The altar was set out with plates of bread and goblets of wine to show the children what the Last Supper might have looked like and Malcolm told the story of Jesus eating the last supper with his special friends, the 12 disciples. The children then divided up into their groups for ten minutes to make pipe cleaner friends, with 'the nice ladies from church' and to talk about their friends. When we asked the children who their 'pipe cleaner' friend was there were some interesting responses

ranging from, 'Jesus' to 'my Dad'!

- Cross (Forgiveness)

A centrepiece had been prepared consisting of a full size cross, a vicious looking crown of thorns, a purple robe, a dice, nails and a whip, which made very effective visual aids as Malcolm told the story of the crucifixion and forgiveness. Then the children returned to their group to write a sorry prayer to be rolled up and left in the holes that had been drilled in the cross. No major criminals identified in this session but a few prayers with apologies to younger siblings and parents from our group were rolled up and put into the cross.

- Resurrection (Hopes and Dreams)

This last session enabled Malcolm to talk about people being sad and afraid after Jesus had died but then their joy, hopes and dreams when they realised that he was alive. This time the groups had a scratch card that uncovered rainbow colours as they scratched off the black surface. So they used them to scratch out their hopes and dreams, which ranged from finding a rainbow, to 'becoming famous', a footballer and a scientist. St Michael's School can look forward to an impressive range of former pupils to 'brag' about in the future.

The Prayer Spaces Morning was a great opportunity for the children and the helpers to think about the last week of Jesus' life and it bought the story alive for us all. The children were very enthusiastic and certainly enjoyed the activities and hopefully they will all remember that Easter is about more than Easter eggs.

Elaine Machin

Malcolm Raby adds:

I would just like to add my thanks to the 'nice ladies from church' who took part in this session – Elaine, the two Jills, Stephanie, Maggie and Carole. Although Sue and I had prepared the session, we could not have managed without you. These 'Prayer Space' sessions are designed to allow children to take a little time out and reflect on some aspect of the Christian story. So far we have looked at Christmas and Easter – I wonder what will come next?

Children's Workshop on Mothering Sunday

Photographs: Meredith Shires



It was a beautiful spring morning when we arrived at St Michael's School hall to find out what Mothering Sunday crafts would be waiting for us. I had come down for the weekend with my seven-year-old daughter Sarah, and Granny had thought it would be a great activity for her. We paid our £2 and were given name labels, then we wandered around the hall to see what there was to do. It was a great opportunity for secret

craft making, without Mum peeking (much). We managed to get round to most of the things or all of them!

There were: Gingerbread men to decorate (yummy), baubles to fill with treats (scrummy), paper lanterns to fold (very tricky), roses to make glittery (very sticky!). There were people spoons, rows of bunting, coloured-in windows and children hunting... for the next activity. The atmosphere was happy, the helpers

were a delight, the cups of tea were flowing, the cakes were munched all right. The children left with shiny bags all packed with gifts for mum, then drifted off towards the church where they charmed the congregation with their singing and gave posies of daffodils to their mums.

Thanks so much to the church and all of the volunteers for a wonderful crafty morning. Jenny James (née Tatham)



Lent Lunches

The last of the series of weekly Lent lunches was enjoyed at Chapel Farm. Just as with all the previous gatherings we were offered a range of fantastic soups followed by cheese and fruit. These gatherings were such fun with everyone enjoying a very relaxed meal with friends old and new. And as an added bonus diners' donations added an amazing £675 to the fund raised by Will Dennis for his sponsored abseil down Portsmouth's Spinaker Tower. (see page 6). Many, many thanks to Mary Banfield, Sue Raby, Jenny Hudlass, Julia Siberry and Liz Absalom for their very generous hospitality.

Sue Tatham

Please note: Non-church goers are very welcome to join the men's and women's breakfasts and Tea@3 (see page 2)

Superb professional
cleaning of carpets,
oriental rugs,
upholstery, curtains
and leather
Guardsman
anti-stain protection

- spot stain and odour removal
- leather cleaning specialists
- flame retarding
- dust mite reduction service
- all work fully insured & guaranteed

For a free, no obligation quotation, call today
Freephone 0808 144 9071
John Joannides, 28 Bracken Close, Bookham

Safeclean
The furnishing care specialists from GUARDSMAN



*Pinehurst
Rest Home*

*We aim to provide an excellent service at
competitive rates, supporting emotional, physical
and social needs of our clients, always respecting
and protecting their status as adults.*

- Residential and 24-hour daycare
- Excellent cuisine
- Facilities for disabled: medic bath / lift
- Home doctor in attendance
- Single & sharing rooms
- Convalescent & short stays
- Lounge with TV & piano
- Separate dining room
- Physiotherapist, chiropodist & hairdresser
- Entertainment: theatre visits / parties
& cabarets held on premises

**National Trust Road, Box Hill
Mickleham, Dorking, Surrey RH5 6BY**
Telephone: 01306 889942 / 888253

Dorking Decorators
PROFESSIONAL PAINTERS & DECORATORS

40 Years Experience
All aspects of painting and decorating

01306 640418

www.dorkingdecorators.co.uk

Approved by Trading Standards & Checkatrade



CHRIS HULME

Garden Machinery

Service and repair of all makes and models of:

- Ride-on mowers
- Rotary mowers
- Cylinder mowers
- Chainsaws
- Strimmers
- Hedge cutters
- Rotavators
- Blower vacs

*Quality secondhand machinery
Collection and delivery service*

The Barn, Cowslip Lane, Mickleham 01372 377757 / 07950 961606



*Flowers
by Elaine*

Local delivery Interflora Worldwide
Weddings & Functions Special Occasions
Fresh Flowers & Plants Varied Gift Selection
Qualified Florists

Established 1978



- ★ Bouquets ★ Arrangements ★ Hand-tied Wraps ★ Plants & Bulbs ★ Exotic Flowers
- ★ Pots & Baskets ★ Planted Displays ★ Champagne ★ Wines & Spirits ★ Fresh Fruits
- ★ Cute Teddies ★ China & Vases ★ Helium Balloons

01306 883511 fbe@btconnect.com 66 High Street, Dorking, Surrey RH4 1AY
Order online at: www.flowersbyelaine.co.uk



For all your decorating needs...

Professional, friendly and speedy service at all times

Fully insured

Insurance work

Exterior painting

Interior decorating

Free quotes & advice

Oil & Water-based products

Commercial/Domestic work

Wallpaper hanging & removal

0794 713 376 0208 3978 962
www.slhdecoratingservices.com

Mickleham & Westhumble Local History Group

Plus ça change, plus c'est la même chose

First in a series of articles by Angela Ireland looking at old parish magazines in the village archives

Recently I have enjoyed the interesting task of reading through old copies of parish magazines ranging from the 1880s to the 1960s in order to record the essential information as part of the Local History Group's archiving work. We do not have a complete record but are fortunate to have a full run from 1920 to 1936 thanks to Rev A.W. Bedford who had them all bound into one volume.

What struck me most forcibly within a very short time were the similarities between the issues which trouble parishioners both then and now. There are of course ways in which these documents remind one that the world is very different nowadays but also that human nature remains the same.

For me it was particularly interesting to note the concerns relating to church life which are so similar to our own in 2017. As far back as 1928 a growing indifference to organised Christianity was noted with a reduction in the number of communicants. This continued in 1929 with concerns about poor attendance at evening services as they no longer fitted in with 'modern life' and concern that although church attendance was good on Easter Day, work and alternative attractions kept people away at other times. To me, having grown up during the '50s when there seemed little to do on a Sunday other than go to church, this came as a surprise. Already it was noted in the 1930s that it was more and more difficult to suit everyone in terms of church services and that people's approach to church had changed so that they did not necessarily attend their local church. Again I had not thought of this happening so long ago. In April 1935 the problem of Christians who behave selfishly was aired as this was seen to be discouraging new members from joining the church – a criticism which is still sometimes heard today.

The church was already struggling to find the money for the 'quota' system whereby money was paid to the diocese to fund its activities – a continuing problem to this day I know. Over the next two decades resentment over the money requested for the setting up of the new diocese of Guildford and its new cathedral cropped up with increasing regularity. A consistent theme during the '20s and '30s was the need for more choir members, particularly men – familiar? Previous rectors gave interesting insights into their ambitions and problems. When Rev WR Lloyd arrived in 1897 he proclaimed his intention to visit every house in the parish in order to get to know people, something which I know has been repeated in more recent times. In 1920 when Rev Bedford arrived he lamented the wilderness of a garden which needed to be maintained (even larger then than now of course and another aspect of life at the Rectory which some of you will recognise.)

As far back as the 1930s difficulties in finding volunteers to run such activities as Sunday School are mentioned, as is the lack of children attending Sunday School. Concern was expressed in 1929 at the lack of leaders for boys' activities, then in 1935 at the lack of young men in the village and in 1936 at the scarcity of children in the village. How cyclical these things are, which must give us hope. As far back as October 1929 the unwillingness of young people to help with village organizations is lamented. I suspect that some of you will have heard this (somewhat unfair) criticism in recent times as well. Two village organizations which seem to have been running since the beginning of time are the Choral Society and the Horticultural Society but in 1929 the latter was struggling with the all too familiar difficulty of finding anyone prepared to take over as either secretary or

treasurer. Nevertheless, then as now, the same names occur over and over again as contributors to local activities. In the 1880s the names of the Gordon Clarks of Mickleham Hall, Mr Praed of Mickleham Downs (Lord of the Manor of Mickleham and Patron of the Living) and the Bryants at Juniper Hill occur repeatedly and in the 1930s the Gordon Clarks, Miss MacAndrew of Juniper Hall, Mrs Batchelor of the builder's yard, Mrs Child of the timber yard, Miss Cullen of Mickleham Downs, Lady Lawrence of Burford Lodge and Mr Gordon Pollock of Old House are mentioned over and over again.

In 1887 it was intriguing to read of the celebrations for Queen Victoria's Golden Jubilee. These were held in the grounds of Mickleham Hall. Then, as now, there were medals and mugs for the children as well as fireworks, sporting events and refreshments, the same formula as has been used for all our current Queen's jubilee celebrations. In 1934 the possibility of holding a fête in the Rectory garden was proposed, on the basis that there was no reason otherwise to have such a big garden. As we know this happens today although there have been times when it has lapsed.

The ever-familiar criticism of young people appears from time to time, such as in the obituary to Mrs Leonard Cunliffe of Juniper Hill in 1928 where it is noted that the younger generation no longer follows 'rule and duty' in the way that she did. An 'every man for himself' attitude is also noted in 1931 followed in 1932 by a lament that people are 'grumbling and discontented' instead of 'getting on with it'. Higher education and mothers also came in for veiled criticism when cookery classes were started in the village in 1890 in order to 'encourage thrift and remove the sin of waste'.

To be continued next month...

**New Mickleham & Westhumble
Youth Group**
See page 26 for further details



Abseiling for charity

On the afternoon of 2nd April Will Dennis and his son Dave abseiled nearly 100 metres down the Spinnaker Tower in Portsmouth for charity. This all started with an offer from my wife Mary of £1,000 for the chosen charities, an offer which I suspect both Will and Dave must have regretted many times leading up to the day. Personally neither wild horses nor anything else would persuade me to follow their example and we are all hugely impressed with the pair of them. The pictures taken by Anna Darnell give some idea of the scale and the sense of relief and relaxation after the event. Will's take on the day follows.

John Banfield

Waiting to abseil was probably worse than the abseil itself. We were taken up to the viewing platform of the Spinnaker Tower, the middle of which has a glass floor (just looking at which terrified me), and kitted out with harnesses which were eye-wateringly tight around the crotch. Then down a flight of stairs to the abseil platform itself, which looked like, and indeed probably was, just a metal balcony bolted on the side of the building as an afterthought.

The staff were very professional, explaining in detail how all the ropes and pulleys work and why you cannot fall too far. There is a safety rope with a clutch which will pull you up short if all else fails. This was demonstrated, and indeed all the instruction took place, while you are dangling in space next to the trainer, too late to back out. After that it is simply a question of letting the rope through your hands at a speed you are comfortable with, bouncing off the wall as you go. The smell of burning from the rope as it went through the carabiner was slightly disconcerting, but by that stage I was very close to the bottom and felt it would probably last. I cannot in all honesty, however, say that it was an experience I would want to repeat immediately. But then John Banfield produced some rather



Spinnaker Tower, Portsmouth

good prosecco and the day suddenly seemed worthwhile.

Thanks are due to a whole load of people. My wife Annie for all her organisation and support; my son Dave for coming with me on the abseil and his wife Lucy for letting him; Dave Pollard for the loan of his awesome PA system to power the fundraiser charity disco; Martin Cox for the light and the dance moves; Annie's work colleagues for inexhaustible energy on the dance floor; Jim Evans for the barrel of beer and my daughter Alice for the cider; Graham, Speedie, Bucky, Jamie and Nick for running the bar and helping set up and take down the chairs and tables; Barbara and Peter Goodall, Deanna and Anna Darnell and Ian and Jill Wright for

coming to watch the abseil; Anna also for the beautiful disco banner and the photography; Mary Banfield, Sue Raby, Julia Siberry, Liz Absalom and Jenny Hudlass who hosted Lent lunches at which charity donations were collected; and above all John and Mary Banfield for having the idea, putting up the funding and hosting us in Portsmouth.

Our original target of matching Mary's generous donation of £1,000 has been massively exceeded and at the time of writing we have raised more than £4,000 in all, so our final thanks are to the many generous donors. The four charities (Leatherhead Start, Princess Alice Hospice, the Meeting Room and Kids for Kids) will benefit to the tune of just over £1,000 each. Will Dennis

Photograph: Anna Darnell



Clockwise from top left: Will's son, Dave making his descent; Safely down and greeted by wives Annie & Lucy; Will on his way down; The Dennis groupies – Seated from left: Barbara Goodall, Annie Dennis, Lucy Dennis, Jill Wright. Standing: Mary Banfield, Anna & Deanna Darnell, John Banfield, Ian Wright

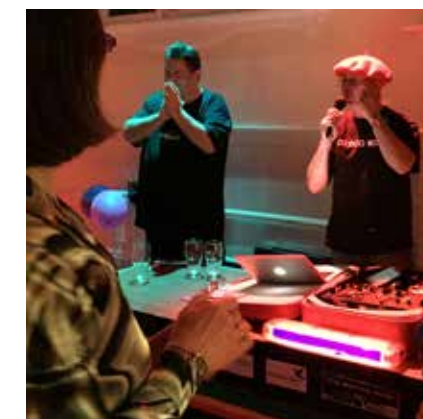
DJ Disco Willy Rocks Da House!

Well done Willy, back to your roots and in your element, a misspent youth revisited! Well not just for DJ Willy in fact, but for a lot of us. Dusting down the loon pants and shaking out the glitter shirt got me in the mood and Katie wobbled on her platform boots until, because of their age, the soles completely disintegrated during the first dance.

This flashback to the sixties, seventies and eighties was part of a series of events including the Lent Lunches and Will's abseil to raise funds for Kids for Kids, The Princess Alice Hospice, Leatherhead Start and Meeting Room

and at last reckoning the total was just over £4,000. Will thanks you all for coming and those who supported the giving on the website, and for the barrel of London Pride from Jim (which strangely seemed surrounded all night by the Fredley Crew!) to big Dave 'Roadie' Pollard for the PA and of course for Mary Banfield for putting fire in Will's belly to do it all.

We all had a great dance, styles from Daddy Dancing, through Rock 'n' Roll to the New York Walk and many more in between to the sounds of The Rolling Stones, The Kinks and Tavares. Thank you Willy for, as Smashy and Nicey



would say, a fabtastic and groovilescent evening... but where was Bachman Turner Overdrive? Martin Cox

Good Things Come To Those Who ~~W~~ait Dance

The Mickleham Village Party will take place next year, 2018, so please save the date Saturday 21st July at 7.30 p.m.

ASHTREAD PARK LANE FINE ARTS

RESTORATIONS - PICTURE CLEANERS - FRAMERS

ART GALLERY

Many originals and prints for sale

Open 9.30 am to 5 pm Monday to Saturday
or call for appointment

102 The Street, Ashtead KT21 2AW
01372 277284 or 07940 677932
lorna@parklaneart.co.uk

EDE BROS

REMOVALS · STORAGE · SHIPPING ·

- Since 1926, Capel-based and family owned
- STRESS-FREE, local, national & worldwide
- Contact us for your **FREE** estimate...

01306 711293
edebros.co.uk



**We provide the best
possible care for your feet**

**Book your appointment:
01372 454583**



**Bookham
Chiropody & Podiatry Clinic**
Diagnosis, Expert Treatment & Professional Care
for Your Feet

29 High Street, Great Bookham KT23 4AA
www.bookhamchiropody-podiatry.co.uk

Betchworth Electrical Contractors Ltd.

Tel: 01737 843079
Mob: 07966 239644

- Additional Lights and Sockets
- Complete Rewiring
- Garden Lighting and Power
- Electrical Installation Condition Reports
- Specialists in Fault Finding
- Telephone & Computer Cabling
- Central Heating Controls
- Smoke Alarms to BS5839:Pt6



All work is in compliance with
BS7671:2008 Amendment 3



ALFA CHIMNEY SWEEPS

- Clean prompt work
- 30 years' experience
- Specialist advice for old/problem chimneys
- Weekday and weekend service
- Fully insured

01306 883455



Gill and Paula would like to warmly welcome you to Aspen Care, offering assistance to enable you to live in the comfort of your own home with care and companionship.

- A happy alternative to a care home
- Cover while your family or carer takes a holiday
- Recuperation and rehabilitation following a hospital stay
- All aspects of personal care, medication and meal prep
- Dementia care, disability, chronic & critical conditions, end of life care
- Accompaniment to appointments

Call for a chat to discuss your requirements.

We look forward to hearing from you.

01737 354821 info@aspenliveincare.co.uk www.aspenliveincare.co.uk



YOUR LOCAL FARM SHOP ON DENBIES WINE ESTATE

farm shop deli plant centre
FREE PARKING www.vgfarmshop.com 01306 880720

Open 7 days* 9.30 a.m. to 5.30 p.m.

- Fresh fruit & veg – local & home grown
- Great range of local cheese
- Fresh bread, cakes, croissants & pastries
- Cook ready meals; Bangers Galore sausages

LOCAL * NATURAL * ETHICAL

Dorking asparagus NOW IN!
Sussex tomatoes
Hanging baskets & bedding
plants

Clandon Park will emerge Phoenix-like from the ashes, but will Westhumble Talks also rise again?

Was March's talk on Clandon's fire and restoration an allegory for Westhumble Talks itself? Just as prospects emerge for the refurbishment of the Chapel of Ease, it seems ironic that the perfect event for such a village community centre is in danger of extinction! 'Cometh the hour, cometh the man' and if you are that man, or woman, retiring chairman, Mick Hallett would love to hear from you.

Meanwhile, in the splendid Templeton Room at Juniper Hall, (by kind permission of Simon Ward), the current team's swan-song gave us an optimistic prognosis for the eventual outcome of the catastrophic fire from Ngaire Wadman, a Clandon steward since 2008.

Clandon has seen several structures over time, but in the early 1700s the current building was designed for Thomas, the second Baron Onslow. Reveling in the nick-name of Dickie Duckslegs, Thomas married the wealthy Elizabeth Knight, heiress to a Jamaican fortune, enabling the construction of a very substantial property, lavished with sumptuous interiors by a Venetian architect, embellished with ornate fireplaces by a Flemish sculptor and adorned with plaster ceilings which took a team of Italian specialists years to complete.

The fire began at around 4 pm on 29th April 2015 in the electricity distribution

board and for an hour there was nothing to alert the casual observer, but after ninety minutes, the building was well ablaze and an uncharacteristic east wind spread the flames to parts of the building that the prevailing west wind would not have reached.

Fire crews from far and wide were hampered by low water pressure, despite draining the lake, but by morning the roof had gone and very little was left inside much of the building. NT staff had removed some items during the night, but a soggy Speakers' Parlour had escaped major fire damage, while in the basement restaurant customers' food was still on the tables, but the Surrey Military Museum became an inferno. The Regimental Colours were saved at the last minute but the World War One football was lost.

Debris up to 8 feet deep produced 2,000 trays of salvage, containing items often made unrecognisable by a coating of ash, including many pieces of china. Water damaged items were dried in a polytunnel village on the lawn, with daytime temperatures reaching 40°C, while Clandon village school was closed for five days because its hall was filled with other rescued objects.

Among salvaged items was the state bed – its hangings rescued on the night, the bed was too difficult to remove quickly, but, amazingly, it was still intact the following day, although it required

ingenuity and props to support the floor while the bed was dismantled. This bed cost £5,000 in 1710, (£350,000 today).

Before some 31 miles of scaffolding were erected, a ground survey to ensure that valuable archaeology would not be compromised, revealed a Jacobean garden lawn over in about 1820 to reduce maintenance. This may be restored once the major work is complete.

The Scandinavian roof timbers proved to be felled in Autumn 1729 which helps establish the date of the building's construction. 3D laser surveys were undertaken to record the building at a point in time, to ensure that there are accurate drawings to help other conservation specialists undertake their assessments. These will also be used for a design competition which will determine how the house will be rebuilt. Current thinking is that much of the ground floor including the Marble Hall will be recreated. The area upstairs gives scope for an exhibition area for innovative displays and interactive material to interest the whole family.

In 2016, the stricken Clandon attracted some 3,500 visitors in just six weeks, offering feedback and ideas on pink sticky-notes, all put on record. 2017 sees Clandon open from 4th March until 29th October, with pre-bookable house entry from 6th April, when visitors will be given hard hats and hi-vis vests.

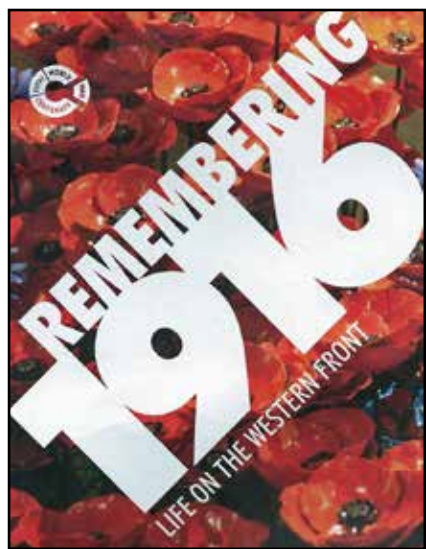
The design competition is appropriately attracting interest from Italy and finalists' designs will be on display from August. The winner will be announced in the Autumn, with a realistic design strategy by Spring 2018. Reconstruction will then begin in 2019, with completion in 2023.

Among several questions from the floor, one queried the economics of restoring Clandon when the enormous sum might have helped several other worthy properties, but the constraint upon the insurance payout requires that it be spent at Clandon, and I think we left Juniper Hall well satisfied that this is the right outcome.

Mike Giles



Clandon Park after the fire – before scaffolding went up



We called it a jolly, but is that the right term for a visit to an exhibition about 1916, the pivotal year of the Great War, even more so as we then had lunch at Her Majesties' pleasure.

Members of the Mickleham & Westhumble Local History Group committee and their guests visited the Remembering 1916 exhibition at John Whitgift School, Croydon. It was a cold wet morning but our knowledgeable and enthusiastic guide greeted us warmly. He explained to us that although the exhibition covered all the years of the First World War, the focus was on 1916 as it saw a number of the most significant battles including the Battles of Verdun, Jutland and the Somme. He did however set the scene by explaining that the outbreak of war was rather unexpected by a country preoccupied by events surrounding the

Mickleham & Westhumble Local History Group Committee Jolly

Suffragettes and by the struggle for Irish Independence. Conscription was not in place until 1916, but fuelled by patriotic fervor and empty bellies many young men volunteered to serve. We resisted the temptations of the dressing up box to see displays that illustrated life on the Western Front, including peering down a very deep shaft depicting the entrance to a German bunker which was only made possible as the exhibition was held on a floor that apparently covered the disused school swimming pool.

An enormous number of artefacts ranging from machine guns to the personal possessions of soldiers in the trenches were put to good effect as we learned of the Battles of Verdun and the Somme. This gave us a real sense of life, and of course death, at the front and contrasted markedly with the display of a middle class sitting room illustrating life on the rather more comfortable home front.

Naval encounters were not ignored and apparently historians are still debating who won the Battle of Jutland, but we decided it was a score draw. In the air we heard of a rather poignant link with Whitgift School as the German flying ace, the Red Baron's first casualty was a former pupil of the school, one of the 251 ex-pupils who sacrificed their lives during the Great War. This free exhibition is well worth a visit; some of us planned to return before it closed on 16th April.

Although many of us were tempted by the exhibition's Edwardian Café, lunch had been booked at The Clink Restaurant which is inside the walls of the Category B High Down Prison, Sutton. I do not know how many of the local history group committee had spent time 'inside' before but I think for the majority of us it was a revelation. We had to pass through many levels of security, including taking the fingerprints of the men in our group. All changed however on reaching the rather sumptuous dining room, which rivaled any to be found in a Michelin starred restaurant. Likewise, the food served was delicious, with many of the vegetables grown by the inmates of HMP Send. The restaurant is staffed by prisoners working towards City & Guilds NVQs in Food Preparation, Food Service and Customer Service, leading to employment in the UK hospitality industry, upon release. It has the enviable record of reducing reoffending rates by up to 87.5% meaning that this fantastic scheme really is a win-win. The prisoners are released with valuable skills, many of them straight into employment and we enjoyed a very tasty lunch. More over it was commented by several of the ladies in our group that you do not often see waiters with such well-developed muscles!

Roger Davis

MPM to the Rescue – Audrey's Windfall

In January this year I received an email from The Artists' Collecting Society, a not-for-profit company dedicated to the administration of Artist Resale Right, an intellectual property right that entitles artists to a percentage of the sale price whenever their art work is resold on the open market. They were trying to find Audrey Sprague who was one of the beneficiaries of the deceased artist Campbell Archibald Mellon, born 1878. Their letter to her last address in Dorking had been returned 'unknown'. Some readers will remember Audrey who sang with Mickleham Choral Society for many years. After an operation she was no longer able to sing, but continued her support of the 'Choral' and wrote the occasional concert review for the parish magazine until she and husband, David moved to Devon.

It transpires that Campbell Mellon was the youngest brother of Audrey's grandfather, Percy. Audrey recalls that 'Uncle Cam was a dear old man with no family of his own. During my childhood he exhibited every year in the Royal Academy Summer Exhibition which my parents and I visited a few times'.

She has several of his paintings, but her favourite is of Iffley Lock, on the Thames near Oxford (shown here) painted just after the First World War. His brother,



Iffley Lock by Campbell Archibald Mellon

Percy had been the lock-keeper at Iffley. In 1911 he, with the help of Audrey's teenage father, rescued a young woman who accidentally cycled off the towpath on a dark February evening when the river was in full flood. Percy received the Albert Medal from King George V, and both he and Audrey's father were awarded Royal Humane Society Life Saving Medals. An account of the rescue and the medals are on display at the River and Rowing Museum in Henley.

Recently Audrey sent a donation to the Choral Society as it was apparently through the by-line of her concert review in the magazine that she was traced, resulting in her 'small windfall'. Sue Tatham

PS The moral of this story is: if the editor asks you to write an article for the parish magazine you should not refuse as you might miss out on something good!

Mickleham Parish Council

Mickleham Parish Council wish to make it clear that the parish precept increase, as shown on the Mole Valley Council Tax bills which were sent out in March, is incorrect. The bills show a Parish Council precept increase of 6% when the true figure should have read 0% - there is no increase in the precept this year. MVDC admit that they incorrectly included a separate grant in the overall figure that formed the basis of their percentage increase. In an explanation on their website they say that while the annual charges on the Council Tax bills were correct, 'there was an error in the calculation of the percentage change since last year on parish precepts.' The true percentage increase can be viewed at http://www.molevalley.gov.uk/media/pdf/2/c/Mole_Valley_Parish_Precepts_2016.pdf

A reminder that the Annual Parish Meeting will be held at Mickleham Village Hall on Wednesday 10th May at 7.30 p.m. when residents have the opportunity to hear about the options available to tackle housing need in the village.

Louise Williams from Surrey Community Action has agreed to address the meeting and talk about what is involved in a Housing Needs Survey. Essentially it offers residents an opportunity to give their opinion on the issue of local affordable housing and, secondly, to assess the current affordable housing need.

The decision to introduce a one-way system on the Zig-Zag road to Box Hill over the Easter holiday caused some concern to parish councillors, largely because of the lack of notice that was given by the National Trust.

While understanding the problems caused by the build-up of traffic on that road at popular times, David Ireland, chairman of Mickleham Parish Council, said it was nonsensical to make the announcement only a few days before the weekend in question. He said it was important that local residents be kept on side and given plenty of warning about such a change.

In response, Andrew Wright, the National Trust's Countryside Manager for Surrey Hills East, said the decision was only made on the Tuesday before the Easter weekend following the chaos of the previous weekend. They would review the experiment and decide whether to implement it again for the May Bank Holiday. Trevor Haylett

M&WLHG Visit to Warren House Kingston-upon-Thames

10.30 a.m. 7th June 2017

Warren House is a Victorian Grade II listed building, set within four acres of landscaped gardens, close to Richmond Park. It was originally built for banker Hugh Hammersley and his large family and has a rich and varied history spanning 150 years of distinguished owners and important guests.

We will meet at Warren House for a prompt 10.30 a.m. start.

Our visit will include a talk on the history of the house and a guided tour of the gardens by Andrew Fisher Tomlin, renowned horticulturalist, garden designer and winner of a gold medal and Best Summer Garden at the 2016 Hampton Court Palace Flower Show. There will be further refreshments after the garden tour and the visit will end at approximately 12 noon. The cost per person is £12.50. Advance booking is essential and payment, by cheque (payable to M&WLHG) or cash, must be received by Sunday 14th May.

For further information or to book a place please contact Judith Long: judith.long2@btinternet.com or 01372 375206





**Counselling
Reiki / Reiki Courses
Mind & Body Healing
Shamanic Journeying
Munay-Ki Rites**

'Wow, it's amazing! I feel so much calmer within myself and also emotionally too, which is really good. I feel so different.'

For further details please call Judith Cobby on
01306 882229 / 07790 614448
or visit www.healing-inspiration.co.uk



NJB DOMESTIC CLEANERS

come home to a clean home
Mother and son business
Fully insured

Weekly or fortnightly cleans
One-off spring cleans
End of tenancy cleans
Shops, offices and communal areas

ncbdomes@aol.c.uk

Please ring Nick: 07717 763 380
or Chris: 07780 670491

**Ballroom Dancing
Latin American Dancing
Professional Training [IDTA]**

Private Lessons only
Sunday, Monday & Wednesday
Evenings 6 - 10 p.m.

At Mickleham Village Hall
Dell Close, Mickleham, Surrey RH5 6EE
07901 742 887
vmvdancing@gmail.com



IDTA Qualified Teacher

STEVE & TIM LANGLEY

Experienced craftsmen

ANTIQUE RESTORATION
CABINET MAKING
FRENCH POLISHING

Free estimates, collection & delivery
01372 457700
07960 486455 07847 769517

Rowlatt Garden Services

RGS

EST.1985

**Gardens large and small
we maintain them all**

All aspects of private and commercial garden
and estate maintenance, landscaping undertaken
Fencing, grass & hedge cutting

Telephone: 01737 844373 Mobile: 07887 838666
References available upon request

Road and Competition Engineering Ltd

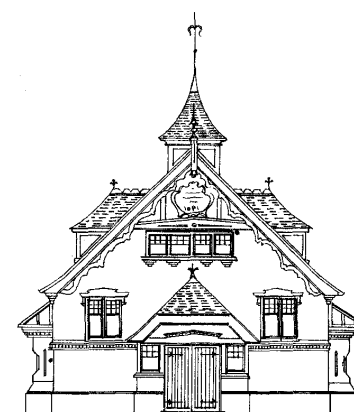


Specialists in the
maintenance and
restoration of
historic road and
race cars

From general servicing, performance
modifications, engine/gearbox rebuilds
to full restorations. We also offer vehicle
storage. Our workshop is based in Charlwood



Jamie Mason 07840 698452 www.raceltd.com



**Mickleham
Village Hall
available
for hire**

Hall bookings
Table & chair hire

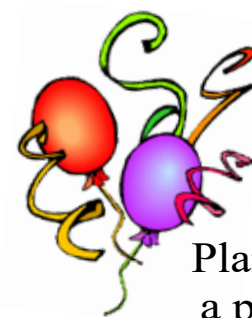
Deanna Darnell

01372 388474

07790 941 601

d_darnell_MVH@hotmail.co.uk

[www.surreycommunity.info/
micklehamvillagehall](http://www.surreycommunity.info/micklehamvillagehall)



Planning
a party?

Equipment
available for hire

China ~ Cutlery

Electric urn

Equipment hire

Mary Banfield

01372 373912

mgbbmw@aol.com

Community Directory

Box Hill (National Trust)

Head Ranger – Mark Dawson

01306 885502

mark.dawson@nationaltrust.org.uk

Friends of Box Hill – Chair Mrs Lyn Richards

01737 842889

lyn@mra.uk.net

Box Hill School

Headmaster – Cory Lowde

01372 374814

hmsec@boxhillschool.com

DORKING CRICKET CLUB

Chairman – David Spackman

07831 859232

david@theimagecompany.co.uk

DORKING CONCERTGOERS SOCIETY

Ian Codd

01306 882544

DORKING GROUP OF ARTISTS

Exhibition Secretary – Patricia Booth

01737 24491

patriciabooth100@gmail.com

DORKING LAWN TENNIS & SQUASH CLUB

Jim Cattermole

01306 883629

jim.cattermole@uwclub.net

THE GARDEN SHED

Pauline Davis

07759 646 353

paulinemdavis@gmail.com

Susie Gowenlock

07768 923 088

susiegowenlock@gmail.com

JUNIPER HALL FIELD CENTRE

01306 734501

enquiries.jh@field-studies-council.org

Head of Centre – Simon Ward

Simon.lr@field-studies-council.org

Friends of Juniper Hall – Mrs Suzy Hughes

01372 275393

suzyhughes@businessetiquetteint.com

MICKLEHAM CHILDREN'S PLAYGROUND ASSOCIATION

Secretary – Mrs Sarah Parfitt

07767 891772

sarah@sarahparfitt.com

MICKLEHAM CHORAL SOCIETY

THURSDAYS 8 - 10 P.M. – MICKLEHAM VILLAGE HALL

Conductor – Miss Juliet Hornby

01372 373106

Secretary – Mrs Anne Weaver

01306 883932

www.micklehamchoral.org.uk

weaver_anne@hotmail.com

MICKLEHAM OLD BOX HILLIANS FOOTBALL CLUB

Secretary – John Atewell

01372 374745

MICKLEHAM PARISH COUNCIL

SEE WEBSITE FOR MEETING DATES www.micklehampc.org.uk

Chairman – Rev'd David Ireland

01372 379381

rev.ireland43@btinternet.com

Parish Clerk – Trevor Haylett

trevor.haylett9@gmail.com

MICKLEHAM PARISH MAGAZINE

Editor – Mrs Sue Tatham

01306 882547

sue@thetatham.co.uk

MICKLEHAM VILLAGE HALL

Chairman – Ben Tatham

01306 882547

ben@thetatham.co.uk

Bookings Manager – Mrs Deanna Darnell

01372 388474

07790 941601

d_darnell_MVH@hotmail.co.uk

Continued on page 16.

**In Pain? We Can Help
Dorking Chiropractic Clinic**

Dr Graham M Allen & Associates

- Back Pain and Sciatica
- Hip, Knee, Foot and Ankle Pain
- Neck Shoulder and Arm Pain
- Headaches and Migraine
- Sports/Occupational injuries
- RSI/Carpal Tunnel
- Back Pain in Pregnancy
- Arthritic Pain
- Trapped Nerves
- Joint Problems

01306 887793

316 High Street Dorking RH4 1QX
www.dorkingchiropractic.co.uk

HSA

Registered by the General Chiropractic Council • Member of the British Chiropractic Association

DORI VANA PLUMBING

YOUR LOCAL PLUMBER

EXPERIENCED, RELIABLE
AND PROFESSIONAL

From changing washers to changing bathrooms

CALL DORI

07977 220465 / 01306 887282

Proud members of
Checkatrade.com
Where reputation matters

ST MICHAEL'S CHURCH

*within the United Benefice
of Leatherhead and Mickleham*

Incumbent – The Rev'd Graham Osborne
01372 372313

PARISH PRIEST

The Rev'd Malcolm Raby 01372 378335
07810 088594
rm.raby007@btinternet.com

CHURCHWARDENS

Mrs Anne Weaver 01306 883932
weaver_anne@hotmail.com

Simon Ward 01372 383350
simonward@btinternet.com

PARISH ADMINISTRATOR

Mrs Sarah Ward 01372 383350
sarwar_63@hotmail.com

PCC SECRETARY

Mrs Elizabeth Moughton 01306 883040
eliz.moughton@btinternet.com

TREASURER

Richard Siberry 01372 375303
Siberrman@aol.com

ORGANIST & CHOIR MASTER

Christopher Connett 01306 743061
c.connett@btinternet.com

BAPTISMS CO-ORDINATOR

Mrs Vickie Leney 01306 884054
vleney100@gmail.com

WEDDINGS CO-ORDINATOR

Mrs Jane Denny 01306 883107
carsondenny@aol.com

FUNERALS ORGANISER

Brian Wilcox 01372 374730
dbrianwilcox@sky.com

www.micklehamchurch.org.uk

*For information about services for other
denominations see website pages.*

Search on 'Churches Together Mole Valley'



FOOD BANK

Donations for the food bank may be left
at the back of the church

Calendar of Events May

2	Tuesday	10.30 a.m. 2 p.m.	Building/Churchyard Committee Funeral in church
4	Thursday	7.45 for 8 p.m. 11 a.m.	Bible Course continues Bible Study Group meets
5	Friday	7.30 p.m.	Garden Shed talk at the Chapel of Ease
7	Sunday 4th Sunday of Easter	8 a.m. 10 a.m.	Holy Communion (Order 2) Worship Together
8	Monday	9.15 a.m.	St Michael's School Assembly in church
10	Wednesday	7.45 for 8 p.m. 7.30 p.m.	Bible Course concludes Mickleham Parish Council Annual Parish Meeting Village Hall
11	Thursday	11 a.m.	Bible Study Group meets
14	Sunday 5th Sunday of Easter	8 a.m. 10 a.m. 11.30 a.m.	Holy Communion (Order 2) Holy Communion Morning Prayer – CHAPEL
15	Monday	11 a.m.	Bible Study group meets
19	Friday	11 a.m.	Guildford U3A group in visit to St Michael's
20	Saturday	9 a.m. 10 a.m. 11 a.m. to 2 p.m.	Men's Breakfast Village Hall Committee AGM at the Hall St Michael's School Spring Fête
22	Monday	3 p.m.	Tea at Three at Chapel Cottage
21	Sunday 6th Sunday of Easter (Rogation Sunday)	8 a.m. 10 a.m.	Holy Communion (Order 2) Holy Communion
25	Thursday	11 a.m. 7 p.m.	Bible Study Group meets Ascension Day Holy Communion Service
27	Saturday	9 a.m.	Women's Breakfast
28	Sunday 7th Sunday of Easter (Sunday after Ascension Day)	8 a.m. 10 a.m.	Holy Communion (Order 2) – CHAPEL Holy Communion

DATES FOR YOUR DIARY

Wednesday 7th June – M&WLHG Visit to Warren House
16th and 18th June – Ashleigh Grange gardens open
Saturday 17th June – Mickleham Choral's Summer Concert
Saturday 24th June – Garden Shed Visit Gardens in Mickleham
Saturday 15th July – M&WHS Flower Show

MEMBERS OF THE PAROCHIAL CHURCH COUNCIL

James Aarvold Carole Brough Fuller
Mark Day Jenny Hudlass Elizabeth Moughton
Val Selwood Richard Siberry
Amanda Wadsworth Simon Ward
Frank Warren Paul Wates Anne Weaver

TOOLS WITH A MISSION (TWAM)

www.twam.co.uk

TWAM is a Christian charity committed to the recycling and refurbishment of tools which then can provide a means for poorer people in developing countries to learn a trade and be able to support themselves and their families. With this practical help, thousands of young men and women have benefited from the skills they have learned. They need:

- garden forks & spades, saws, hammers, drills pickaxes etc
 - sewing or knitting related tools, thread, zips, scissors
 - embroidery items, fabric and sewing machines
 - wool and knitting needles, patterns
 - portable typewriters, printers and laptops
- If you have any of the above which could be used to help someone to have a better quality of life and hope for the future, please contact Carole Brough Fuller: 01737 842918 cbroughfuller@btinternet.com

HELPING HANDS

INCLUDING FOOD FOR FRIENDS

A service for all residents of Mickleham and Westhumble

Examples of services we offer:

- Transport for visits to doctor's surgery or hospital
- Essential shopping / collection of prescriptions
- Changing library books
- Small tasks: eg changing fuses, altering clocks etc
- Dog walking / care of pets
- Visiting / befriending
- Home-cooked meals for local families going through difficult times

Requests to Mary Banfield 01372 373912
or leave a message on answerphone.
Callers will be contacted within 24 hours

*More helpers needed – please contact
Mary if you can spare some time.*

Community Directory

Continued from page 13

MICKLEHAM & WESTHUMBLE BOOK CLUB
Mrs Bernice Bailey 01306 741310
bpbailey_uk@yahoo.co.uk

MICKLEHAM & WESTHUMBLE CRICKET CLUB
Team Secretary – Will Dennis 01372 372684
will@micklehamhallfarm.co.uk

MICKLEHAM & WESTHUMBLE HORTICULTURAL SOCIETY
Chairman – Mrs Judy Kinloch 01372 375358
www.surreycommunity.info/mwhs mail@jkinloch.plus.com

MICKLEHAM AND WESTHUMBLE LOCAL HISTORY GROUP
Chairman – Ben Tatham 01306 882547
ben@thetatham.co.uk

MOLE VALLEY DISTRICT COUNCIL 01306 885001
Councillor – Duncan Irvine 07738 384287
duncan.irvine@molevalley.gov.uk

NADFAS SOCIETIES
Betchworth – Miss Mary Venning 01306 883301
Dorking – Mrs Sue Tatham 01306 882547

ST MICHAEL'S CHURCH OF ENGLAND (A) INFANT SCHOOL
Headteacher – Jeremy Smith 01372 373717
info@stmichaels-dorking.surrey.sch.uk
Friends of St Michael's School – Mrs Meredith Shiers
meredithshiers@gmail.com

ST MICHAEL'S COMMUNITY NURSERY
WEEKDAY MORNINGS – MICKLEHAM VILLAGE HALL
Supervisor – Mrs Hilary Budd 01372 361021

SURREY COUNTY COUNCIL 03456 009 009
Councillor – Mrs Hazel Watson 01306 880120
hva.watson@btinternet.com

SURREY WILDLIFE TRUST 01483 795440
info@surreywt.org.uk

WESTHUMBLE RESIDENTS ASSOCIATION
Chairman – Duncan Irvine 07738 384 297
duncan.c.irvine@gmail.com

WESTHUMBLE NEIGHBOURHOOD WATCH
Lead Co-ordinator – David Allbeury 07860 227451
westhumble.neighbourhood.watch@gmail.com

ADDITIONAL CONTACT INFORMATION

CITIZENS ADVICE
Dorking – Lyons Court 0844 4111 444
Leatherhead – Swan Mews, High Street 0844 4111 444

POWER CUT HELPLINE 0800 783 8866

CRIMESTOPPERS 0800 555 111

POLICE
Non-emergency number 101
Dorking Police (non-urgent) 01483 630370
Neighbourhood Specialist Team – Dorking Rural North
Inspector Richard Hamlin 01483 631474
Richard.Hamlin@surrey.pnn.police.uk

PC 40541 Lee Munday leemunday@surrey.pnn.police.uk
PCSO David Sadler Sadler8761@surrey.pnn.police.uk

Babysitting by local teenagers

Chris Rowland 01372 376712
Freya Pearce 01306 884724
Olivia Parkin 07887 367850
Maisy Presley 07720 657327
Isabella Pererira 07515 489067
Issy Nash 01306 742762
Ailsa McNaughton* 01306 887408

Patrick Moran 01306 640043
Ellie Kim 07773 395575
Ailsa Graham 01306 889855
Anna Forti 07557 964530
Alexa Dewar 01306 884744
Emily Brewer 01306 883793
Philomena Ala 01306 885767
Delphine Ala 01306 885767

* In holiday time only

*If you would like to add your
name to this list, please get in
touch with the Editor.
No charge.*

Advertising in the Parish Magazine

Please contact the Editor.
Small ads: a nominal fee is
charged for ads where items or
services are bought or sold.

We have been advised to print
the following reminder:
*We cannot guarantee the
quality of the goods and
services offered by our
advertisers.*



Alan Edwards wrote:

Gwen was born in Nottingham in March 1932, but spent most of her childhood and younger years in Banstead, following her father's transfer to London as a tax inspector in 1936. I also grew up in Banstead and started my education in 1935 at the village school, which was in the High Street where Waitrose now stands. Little did I know then that both Gwen and my future best man, Brian Lloyd-Jacob were also under the same roof, two classes below me - a yawning gulf at that tender age. Fast forward to the autumn of 1952 when I was supplementing my income with the sales of home-produced Christmas cards of Banstead views. At this time I already knew her father as we were both members of Banstead Horticultural Society. So in pursuit of sales I chanced to call one evening and there, sitting by the fire was Gwen, looking quite enchanting. And so began our courtship which led to our marriage at Banstead All Saints church in September 1956 and a honeymoon in Goodrich in the Wye Valley.

Our first house near Tattenham Corner cost us £2,450 in 1956 and our second, in Burney Road, purchased in 1964 stretched us to the limit at £7,000.

On leaving Rosebery Grammar in Epsom in about 1950 Gwen joined the Midland

Bank and worked in their Documentary Credits Department, followed by several years at Distillers Company in their HQ near Burgh Heath.

A well-earned retirement started in 1965. Feeling somewhat lonely during my absences on BP business she decided a canine companion would be the answer so we purchased Brendon, our first Jack Russell terrier from Bregssells Farm at Holmwood. What a joy he proved to be! A constant companion on our walks over the North and South Downs and holidays in the Lake District and N Wales. Gwen also joined me during my summer sea bird surveys for BP in the Shetland Isles and on one occasion we and Brendon flew there together in the company's private aircraft.

It is perhaps as a carer that Gwen will be, or should be, remembered. Firstly for the time devoted to my aged mother and later to me during my cardiac problems which kept me out of circulation for many weeks. So rest in peace my dearest one, in our garden, on Denbies Hillside or any other quiet place in the Surrey or Sussex countryside. I will always find you there.'

Gwen had two older brothers, one of whom, Gordon, sadly died in the RAF in 1945. Tony, the other brother, now also deceased, and his wife Anne had two sons, Nick and Mark. Anne lives in Florida and Nick in New Zealand. Alan discussed attendance at Gwen's funeral with them but made clear that Gwen would not have wanted them to travel such distances for a short service. Mark spoke for all of them in celebrating Gwen's life through wonderful memories of her. He remembered Gwen's cooking and meals were exceptional, accompanied by enjoyment of wine and sherry and shared laughter. Shortbread and homemade cakes were also

Gwen Edwards 1932 - 2017

memorable. Mark remembered Gwen's love of wildlife, nurturing robins and talking to them in the garden. Walks and picnics in the Surrey Hills, pub lunches and cups of tea in Surrey villages also formed part of the memories. Gwen was a caring aunt and always thoughtfully tailored presents to her young nephews' interests. Mark paid special tribute to Alan's incredible care and support for Gwen as her illness progressed - his loyalty and love a testament to their enduring marriage and commitment to each other.

Best man Brian Lloyd-Jacob also paid tribute to Gwen, remembering their school days together and the time when Gwen and Alan met and got married after a courtship that lasted four years! Gwen was perhaps best known locally for her prowess in the cookery classes at the flower shows over the years; and for her support for Alan's gardening. She was always to be seen helping him set out his entries in the vegetable and flower classes. Between them, a great success story.

Community News

We are sorry to report the recent death of Peter Lindsey-Jones, a long time resident of the Alms Houses.

Welcome to Graham and Sue Crowthorn who have moved to Pilgrims Close. They formerly lived in Cheadle Hulme.



We are always grateful to
receive news items from
our readers.

Ashleigh Grange Gardens Open

Friday 16th June - evening opening Sunday 18th June - afternoon opening
More information next month



On April 3rd THE GARDEN SHED had their opening Launch at Chapel of Ease in Westhumble. What a turn out we had. 60 people came through the doors, with standing room only. Guests tucked their way through a selection of homemade cakes and sandwiches. Then we were entertained by our

guest speaker John Clachan for more than an hour on some interesting and often amusing topics. Pruning was widely discussed, with a practical demonstration, resulting in branches of foliage adorning the carpet. (we did clear all this up afterwards).

Composting caused quite a discussion, along with our furry companions in the garden, which dig our lawns up. Yes, moles.

Another dreadful friend, weeds which invade our soil. How do we ever completely remove them? We were shown some informative slides, and advice was imparted by John on how to tackle these, along with pest control on our plants.

Some lively questions and answers completed John's talk. I think we can all say that by the end of the evening, we felt encouraged to follow through

some of John's enthusiasm and ideas, to tackle the task of maintain a healthy garden.

We were both so pleased with the success of our first meeting of The Garden Shed, we had been a little unsure how many locals would attend. What a response and the feedback afterwards showed how much people had enjoyed themselves.

We have put together all the information from the questionnaires, (preference of topic, events, days and times), that were completed on our first evening and will give you the results at our next meeting.

All information of The Garden Shed events for 2017 can be found on The Mickleham and Westhumble Horticultural Society website www.surreycommunity.info/mwhs.

Susie Gowenlock

MCS CELEBRATE
10 years with conductor
JULIET HORNBY

Mickleham Choral Society will sing the Fauré Requiem accompanied by full orchestra. The rest of the programme will comprise solos, ensembles and some of Juliet and the Choir's favourite pieces.

Saturday 17th June 7.30 St Martin's Church, Dorking.
Tickets £15.00, children under 14 - £7.50
Box Office weaver_anne@hotmail.com or 01306 883932

Bar serving Prosecco and soft drinks.

THE GARDEN SHED
presents guest speaker
GEOFF HAWKINS
talking about
GROWING VEGETABLES
on Friday 5th May 2017
at 7.30 p.m. at
Westhumble Chapel

Before Geoff delivers his talk on 'Growing Vegetables' we will be holding our first 'Sharing Event' Simply bring along any spare plants, seeds, seedlings and cuttings, if you have any and you can swap them. We will also have the opportunity to discuss the questionnaires and your ideas.

Tickets are £5 in advance from Pauline or Susie or £6 at the door

Contact details:
Pauline Davis
07759 646353
paulinemdavis@gmail.com
Susie Gowenlock 07768923088
susiegowenlock@gmail.com

Leith Hill Musical Festival 2017

Saturday 8th April was Mickleham Choral Society's LHMf day at Dorking Halls. Here is Veronica de Boer's account of the day:

'The noise of the main hall is increasing and the tension is rising as more of us flood in and clamber up to find seats on the stage. We have done a quick warm up with Juliet in the Martineau Hall and now, this is it. Gripping my music folder and exchanging nervous smiles with fellow singers, we are all greeted, and our festival day has started. Do I know my words for the various pieces? Will I remember my entries and - oh great, at least we are not on first.

The morning goes very quickly - listening to all four choirs sing their various pieces - and moving into and out of the limelight and back to our seats. The choirs have provided some very different interpretations of the songs and it is fascinating to hear the subtle differences in their performances. The adjudication is

nerve-racking: hearing how we have done and trying to guess who may have won that round. We have done well, maybe not as well as last year, but winning the part song and coming second in our other songs. Our ensemble groups have excelled too, and taken first and second places. There is nothing as special as that feeling of pride! We came home with three trophies, a banner and lots of certificates. Lunch for many of us is at the local pizza restaurant and we pile in there hungry and happy. We relax and chat for an hour and then return for the rehearsal for the evening concert. The talented orchestra with its percussion and wind instruments turn our challenging rendition of Carter's *Benedicite* into a truly fantastic work bringing it suddenly and stunningly to life. By the evening, all the choirs have settled into the mood for a 'jolly good sing' and our new conductor, Jonathan Willcocks, has thrown himself headlong into a

magnificent musical direction taking us all along with him in its wake. It is an exciting performance and very well received by the audience. The children's choir steals the show with beautifully sung pieces and impeccable diction.

There was much celebration in The Running Horses afterwards, where we were able to show our special thanks to our conductor, Juliet Hornby, for all her hard work and her amazing support and encouragement during our rehearsals and on the day. Now it's over - relief, joy, sadness and exhaustion!

My parents sang for some 30 years with Bookham Choral Society and this is my second year with Mickleham. LHMf was part of my life growing up with their rehearsing and excitement around the festival day itself. For them it was always about loving singing. I am pleased to say that has definitely rubbed off on me. The LHMf is unique and special - I feel very privileged to be part of it.'

Photographs: Andrew Tatham



Left: Juliet and Tracy show off the trophies. Right: Andy, Emma and Stephanie inspect the names of previous winners embroidered on the back of the banner.

DANCING IN THE AISLES
Flower & Music Festival
Leatherhead Parish Church
Friday 5th May, Saturday 6th May, Sunday 7th May

For further details: www.leatherheadparish.com
Tickets available from: Parish Office (01372 362544)
Nicky Osborne (013722 372313) Beverley Stonehouse (01372 377551)

Leatherhead Community Association

For full details of walks, talks, outings and other summer events and activities
call 01372 360508
or email lca2@btconnect.com

NEED A CARER?

Highly experienced, qualified
carer available
Hours to suit your needs
Cheryl 07810 881 267



Extensions and alterations often require a
Structural Engineer

Robert Wynter & Partners Ltd

01306 879875

Book House, Vincent Lane
Dorking RH4 3HW

Get IT Fixed, Get IT Connected

Expert Repair & Maintenance



Brockham based. No call out charges. Fully transparent quotations
with no hidden costs. We make technology work for you.

Call us now on
01737 845980

ChalkHill Systems
www.chalkhillsystems.co.uk

Painting

Decorating, tiling,
Curtain & blind hanging,
Wallpapering,
Furniture assembly etc.

- Fully insured
- Free estimates
- References available

Tel: Martin 07770 441 201



Vivien Cresswell

Made-to-measure Soft Furnishings

Curtains, Roman Blinds, Cushions



Extensive range
of fabrics

01737 843858

www.cresswellscurtains.co.uk

Mike Palmer

Electrical Services

Part P registered electrician



From additional lighting and sockets
to complete rewires

Fully insured Registered with the NICEIC

07866 930483 mike@mikepalmer.biz

Boxhill Way, Strood Green, Betchworth RH3 7HY

KING WILLIAM IV



EAMONN AND ANNE WANT TO BUY YOU A DRINK AND GIVE YOU A DISCOUNT ON FUTURE VISITS

As a 'destination pub', we are often packed out when the sun is shining. However, as a small independent freehouse we are grateful for the trade provided by our regulars, and those who live locally who come to see us all year round.

So we have decided to have a 'locals rate' and give everybody who lives within a mile or so from the pub a discount when they eat here – no restrictions/ gimmicks. If you come in with some proof of ID and fill in a form with your

name and address, and we will give you your King William IV VIP locals card. I will even buy each person a drink whilst they fill in their form – the card will be unique to the individual so if there are many in your household each person will need to be issued a card. PS Live music starts 4 p.m. each Sunday from 21st May onwards.

Looking forward to seeing you, Eamonn

Byttom Hill, Mickleham 01372 372590 www.thekingwilliamiv.com

Mickleham and Westhumble Horticultural Society

Seduced By Bulbs

Not many gardeners can imagine the end of winter and the coming of spring without thinking of bulbs and how reliant we are on them from January through to April and May. How monotone our borders, pots, let alone woodland would look without them.

Today, as I write, is 7th April and it has been a true summer's day with cloudless blue skies and temperatures in the high teens. The price of such settled weather is of course cold nights so not the time to be planting tender annuals. I have been keeping an anxious weather eye on my *Wisteria sinensis*, a purple one which now shows 3-4 inch long green racemes and is totally vulnerable to a frost at this stage. The white, on the other side of the house, worries me less as it always flowers slightly later and has never had its flowers decimated by frost.

But it's the spring bulbs showing at their best at this time and in this weather that I would like to celebrate, particularly tulips. For now we will ignore the early and welcome presence of snowdrops and narcissi *et al* and concentrate on the moment, ephemeral though it may be. What is exciting me in the garden are the flowers of some species tulips as the petals open in the sun to reveal the inner, often contrasting colours, which add to their beauty. I hesitate to name cultivars as they seem to have different names according to the nursery that grows them but one has only to look

online for images of these smaller tulips to appreciate their variety and impact in spring before there is any real competition from perennials growing in a mixed border. Some are so tiny, like *Tulipa tarda*, only inches high, that it must have a front row seat. Others, somewhat taller, I think mostly show best planted in groups; being small they do not have the height to demand attention but they cannot be ignored in profusion.

But where would we be without the taller tulips? We are spoiled for choice, from a variety of shapes of the traditionally rounded, pointed and frilled, single and double, in almost every colour under the sun, let alone bi-colours. What I optimistically call my red and yellow border does actually live up to its name at this time of year with yellow, red and different red and yellow bi-colours, from dark red cum yellow to more subtle variations. They grow year after year among hemerocallis, paeonies, oriental poppies, euphorbia and other perennials, none of which compete in height at this time of year. In spite of the fact that tulips are said not to survive well when left in the soil after flowering and lifting is often recommended, I do wonder if this is more likely to occur on heavy clay soils rather than our local often lighter chalk. Much of one's choices depend on the style of gardening you adopt. Formal



gardeners can use tulips for a superb display in a bed devoted to them, often enclosed in a box hedge where the green enhances many colours (or even the white and green of *Tulipa* 'Spring Green'). Often these are lifted and replaced by annual bedding later in the season. This has its place of course but I have to admit my preference for more informal settings. Every year when I go over towards Gatwick I fall in love with a roundabout! Green grass, uncut, is topped by purple, almost black tulips, possibly 'Queen of the Night'. It is just stunning.

And how could I not have mentioned *Fritillaria meliagris*, the snakeshead lily, or my current favourite, Iphieon, pronounced 'eyephion' I learn from Google. Another time...

Judy Kinloch

Mickleham Parish Council Annual Parish Meeting

Wednesday 10th May 7.30 p.m. at the Village Hall

07871 051661 / 01372 458616
timskerrittgroundworks.co.uk

TimSkerritt
LANDSCAPE & GROUNDWORKS

Turn your vision into a reality

Tim Skerritt Landscape & Groundworks offers a comprehensive range of services to both commercial and domestic clients across Surrey.

From hard landscaping to extensive site excavations, we offer a high quality, honest, reliable and competitively priced service, guaranteed to meet all your needs. Contact us today to find out more.

Foot Care Focus

- Toenail cutting & filing, Diabetic foot care & advice
- Reduction and removal of hard skin, cracked heels & caluses
- Reduction of thickened nails and fungal infections
- Reduction & removal for corns & verrucas
- Treatment of ingrowing toenails & athlete's foot
- Clinic treatment or home visits available

APRIL STANDISH TCFCPCdip
Foot Care Practitioner
07397 154 000 april@footcarefocus.co.uk



Reflexology

Valerie Dexter, IIR AOR
Clinical Reflexologist

07968 777941
val@enhancingenergy.co.uk
Dorking based

Treat your feet to treat your whole body
relieves stress headaches sciatic pain
nervous tension aids sleep digestive disorders



GARDENING

£15 per hour – Free quotations
– SERVICES –

Gardening Maintenance
Hedge Trimming Specialists
Garden Design
Soft Landscaping

07740 308 490 contoursgardening@outlook.com
www.contoursgardening.com

Julie Watts Family Law



AN AFFORDABLE AND EXPERIENCED PROFESSIONAL
ALTERNATIVE TO TRADITIONAL SOLICITORS

- Divorce • Arrangements for children • Finances
- Court Proceedings

PROUD TO PROVIDE A DIFFERENT KIND OF SERVICE

- Affordable fees • Straight-talking advice
- Practical, real support

Contact me for a consultation

07808 572157 juliewattsfamilylaw.co.uk

Mole Valley Mowers



Open
Monday to Friday
8 a.m. - 5 p.m.
& Saturday
8 a.m. - 1 p.m.

All leading makes of lawn mowers
& garden tractors catered for

Reasonable rates

Free estimates & friendly service

Paul White Bookham 01372 458008



Treeline Services Ltd

Tree Health Care Specialists



Chadhurst Farm, Coldharbour Lane, Dorking, Surrey RH4 3JR

Tel: 01306 741800 Fax: 01306 885150

Email: james@treeline.co.uk www.treeline.co.uk

Need help with your accounts?

If you run your own business you will appreciate how difficult it can be to keep up with your accounting paperwork.

However, meeting deadlines and understanding the financial health of your business are crucial to avoiding penalties and ensuring that the hard work you put in pays off where it matters – in your pocket

- Tailored accountancy local to Dorking – saving you time
- Fixed fees – saving you money • Free Xero software – simple invoicing

Call today to arrange a
free no-obligation
consultation

01737 652 852

esther@a4cgroup.co.uk
natasha@a4cgroup.co.uk



Dorking Pest Control Services

Local Authority Approved Contractors



Our Services include: Wasps, Bee Swarms, Hornets, Rats, Mice,
Squirrels, Fleas, Flies, Ants, Cockroaches, Bed Bugs,
Rabbits, Moles, Foxes and Deer



• Domestic, Commercial and Industrial • Contract Work • Preventative Control Programmes

Experts in pest control throughout Surrey

Office: 01306 743001 Ivor: 07710 117491 Chris: 07971 519415

www.dorkingpestcontrol.com

Box Hill Day at Box Hill School

On Tuesday 28th March it was the Annual Box Hill School Make a Difference Day, when pupils from across the whole school participate in a variety of fun and challenging activities as part of the school's commitment to help good causes and the community.

This year's charities were chosen because Box Hill School has a personal link with them and because they are local to us. Thousands of pounds have been raised and will be split equally between The Surrey Care Trust, Momentum and The Meeting Room as well as continuing our on-going work in the South African village of Philippolis. Throughout the morning the students organised and took part in various activities around school. This year

there was wet sponge throwing (at teachers), a coconut shy, an Easter egg hunt around school, face painting and pancake making and decorating amongst the many stalls available.

Undoubtedly, one of the highlights was the 'Auction of Promises' where teachers and fellow students bid for a list of promises. This year's list included a BBQ for 10 people, a hair and make-up party and the most popular by far was the chance to shave off a teachers' beard into any style with his promise that he would keep it like that for two days! This year's auction alone managed to raise close to £1,500 with a total of more than £3,000 so far, and more pledges still to come.

The ever popular 'Variety Show'

brought the day to a close with a hugely entertaining and diverse range of performances from students and teachers. The audience was treated to musical and vocal productions, comedy sketches, and a mini Fashion Show among a number of very innovative and enjoyable acts. Planned and run entirely by the students from our Round Square Committee with help and guidance from our Round Square Representative Miss Florence Wayas and former Round Square Representative Mrs Sandy Watt, the evening was a wonderful showcase for some well-known and previously unknown talents.

Mrs Watt was delighted with the event and said 'The money raised will be going to the Good Work Foundation and Future Nature, to support of the people of Philippolis, South Africa. Box Hill School has been visiting and working in Philippolis for 10 years now. So far we have assisted in the refurbishment of the church, built a raised bed garden and provided an underground irrigation system, built the foundations of a digital learning center for the local school and villagers, a storeroom and kitchen for the local Omas (or grannies as we know them). We helped to build the first counselling room in the free state and most recently a toilet block.'

We are so pleased to have been able to support such amazing causes and have fun as a whole school while doing so. We look forward to inviting in representatives from the charities to receive the money in assembly next term.

Do not forget to get your tickets for the talk at 7 p.m. on 4th May by British Paralympic cyclist, adventurer and author Karen Darke MBE 'There are no limits'. www.boxhillschool.com

INSPIRATIONAL
Box Hill School

There are no limits

A talk by **KAREN DARKE, MBE**
British paralympic cyclist, adventurer and author

"Her story is not just one of the triumph of the human spirit, but of the 'spiritual'. It's 'spirit' that makes us what we are, 'spirit' that calls out to us in the wilderness places".
Sir Ranulph Fiennes

**Thursday
4th May 2017**

Drinks Reception 7.00pm | Talk 7.30pm - 9.30pm
Box Hill School, Mickleham

Karen Darke was paralysed from the chest down at the age of 21 following an accident, whilst sea cliff climbing.

Karen's inspirational story is framed by her belief that 'Disability is a state of mind not a state of body'. She believes that our own minds are our biggest obstacles to living and achieving our wildest aspirations, and if we set our heart and mind to it then 'there are no limits'.

To have the most impact in life we should challenge our constraints, adopt a positive mental attitude and support each other to become the best we possibly can. Karen has crossed Greenland's ice cap on skis, scaled El Capitan, hand-cycled the length of Japan and sea kayaked a 1200 mile length of the Canada-Alaska coastline.

She is currently a full-time athlete with the British Para-Cycling Team and won Gold at the 2016 Rio Paralympics to add to her Silver from London 2012.

We extend a very warm invitation to join us at Box Hill School to share Karen's remarkable journey.

TICKETS £6 (including refreshment)
BOOK ONLINE www.boxhillschool.com/events OR CALL 01372 373382



Stood

MISS

Answer on page 26.

TONY WINCH

CARPENTER, JOINER & CABINET MAKER

www.tonywinch.com

01306 742373

07969 016 924

PLASTERING

John Hooper
over 30 years' experience

Work includes float and sett, skimming, screeding,
traditional rendering, modern coloured rendering
(monocouch) cornicing
from small ceilings to large newbuilds

07946628190 01737423489

j.hooper-plastering@hotmail.co.uk



R A BUTLER

INTERIOR AND EXTERIOR
PAINTING & DECORATING

OVER 30 YEARS' EXPERIENCE



**BUILDING
REPAIRS
UNDERTAKEN**



PATIOS, DECKING ETC NO JOB TOO SMALL

LOCAL REFERENCES IF NEEDED

01372 372586 / 07776 256131

Shakespeare Electricals

Your local electrician



Fully qualified
and insured



10% off labour costs with this advert

Call Matthew on 07783 553880

www.shakespeare-electricals.co.uk

Building Plans

For home improvements & extensions

Including planning & building regulations
Fast efficient service at competitive rates

MICHAEL LLOYD

CEng MICE MINT

For free consultation:

Phone: 01483 205479 or 07958 791 402

Email: michael@lloydplanning.london

OSTEOPATH

NICK WOOLLEY

BSc (Hons) Ost

Osteopathy for all ages

Also offering Cranial Osteopathy and
Myofascial Acupuncture needling treatments

For advice or an appointment

01372 379270

www.Headleyosteo.com

COOK

ARBORICULTURAL LTD

Professional planting, Tree surgery,
Surveying & Remedial work in Surrey

Tree removals ~ Stump Grinding ~ Planting
Tree reductions & pruning ~ Tree health & development site surveys

For a free, no obligation quote please get in touch:

07739 681 706 alex@cookarbor.co.uk www.cookarbor.co.uk

Michaela's Cottage, Fredley Park, Mickleham, Dorking RH5 6DE



Splendid Spring!

As I write, the sun is shining, the sky is blue, and reflecting on the last few weeks, we really have had a delightful Spring so far!

The warmer weather has a marked effect on the children at nursery. They are able to come and go from the garden to the nursery building all year round, but it is very noticeable that when the weather first warms the building is empty, children only choosing to go inside to 'use the facilities'. We adjust our planning to respond to the weather and even moved the book corner outside for a week.

In Forest School we have been noticing the changing environment and the signs of spring. One of our dads has been building bird boxes and donated one to the nursery, so a group of children



Top left: Listening to the Easter story in St Michael's. Other pictures: outside activities.

constructed a ladder to put it up in the tree! We then used the ladder to explore one of the slopes, before taking it apart at the end of the morning.

We had a lovely couple of mornings walking to the Church where we read

the Easter story and then found the stone carving of The Last Supper. We talked about spring and new life, and then spotted spring flowers and new leaves on the way back to nursery.

Hilary Budd



Trish Humphreys of Chapel Lane, Westhumble is looking forward with excitement to the publication of her daughter's first book on 1st June. Imogen White, who lived briefly in Westhumble, has written the first of a series for children entitled The Rose Muddle Mysteries. *The Amber Pendant* is 'full to the brim with magic, mystery, myth and history, impossible to put down.' The second book of the series, perfect for young readers before they move on to Harry Potter, is due to follow in 2018. Both books are published by Usborne. Imogen lives in St Leonards on Sea with her husband, children and a belligerent ginger tom-cat.



Mickleham
Village Hall
AGM

Saturday 20th May
10 a.m. in the hall



Mickleham Village Hall, Dell Close

Weekdays 9.15 a.m. - 12.15 p.m. (term time)

WITH OPTIONAL LUNCH CLUB

On Mondays and Thursdays there is the option for children to stay until 2.45 p.m.

Maximum 26 children per session

• playing naturally • learning naturally

We offer an excellent range of pre-school activities for 2½ to 5 year-olds where they can learn through play in an informal, friendly atmosphere.

Contact us for more information about admissions

01372 361021 www.stmichaelscommunitynursery.co.uk

Mickleham & Westhumble Youth Group



**School years 7-9 for 11-to 14-year olds
on alternate Friday evenings during term time**

5th, 19th May - 9th, 23rd June and 7th July

7.15 - 8.30 pm

Mickleham Village Hall

For more information contact

Jonathan or Sarah Blake 0778 7126 966

An opportunity to meet up with friends and join us for games & fun!

Tuesday Toddles

A new friendly group in Mickleham for kids aged 0-5 years to play along side their Childminder or Registered Nanny

Mickleham Village Hall

Every Tuesday. Term time only 9.30 - 11.30 a.m.

For more information please contact:

Natalie 07790 318 653 or ask to join our closed

Facebook group for Tuesday Toddles for regular updates.



St Michael's School is collecting Sainsbury's Active Kids vouchers.

Please give to a St Michael's parent or Ben Tatham at St Anthony, Pilgrims Way or leave at the school.



BRAIN TEASER answer: MISUNDERSTOOD

Pause for Thought

This month our excellent RE leader, Rowan Dickinson, reflects on our special Easter Pause day in school and its impact on the children.

On Tuesday 28th March, the children of St. Michael's C of E Infant School took part in a special Easter Pause Day, where they were given the opportunity to learn more about the different parts of the Easter story, through a range of different fun-filled learning challenges.

In small, mixed year groups, each child had the chance to watch a short video and create their own paper t-shirt with messages that they would say to Jesus, during his triumphant entry into Jerusalem on Palm Sunday.

Maundy Thursday was recalled during a re-enactment of the Last Supper. Each child was given the opportunity to have their feet washed by an adult, whilst discussing the Christian values of humility and reverence. The children also had a chance to share bread and grape juice together, recalling the events of The Last Supper. These proved to be very popular activities!

In another learning activity, the children discussed the theme of forgiveness and were given the opportunity to make their own prayer box containing a special prayer they would like to say to God. 'I enjoyed making a prayer box as I could talk to God.' (Callen) They also had great fun dropping vitamin C tablets into water and watching them gradually dissolve, signifying the removal of the bad thoughts and actions and being forgiven by God. The children were asked: Do you think it is easy to forgive?

'I think you should forgive. It means you are saying you know they mean they are sorry.' (Immy)

'It is tricky to forgive but you have to forgive and not think about it.' (Flora)

'It shows kindness to forgive. It is not easy but deep down you want to forgive.' (Oscar)

Another activity saw the children having fun creating colourful paper flowers to put onto a large cross, signifying the new life given to us all through Jesus' death and resurrection. Each child was also able to design and make their own Easter garden and to discuss and share the importance of each part. This proved a very popular activity, with many of the children choosing this as their favourite of the day. 'The garden was fun as it shows us new beginnings.' (Jessica)

The children really enjoyed being given the chance to make their own Easter basket with a decorated egg inside. During the making of these, the children were able to recall the resurrection and the new life they are beginning to see all around them during spring time. 'I enjoyed making a basket and egg, as the eggs represent new beginnings.' (Sophie)

No special activity day is complete without some sort of delicious treat to eat! During the day, each child was given the chance to make Easter biscuits with a group of helpful mums led by Cat Armitage. They discussed the reason why the biscuits were special, including the shape being circular, like the stone that was rolled away from Jesus' tomb; and the spices that were included in the recipe signifying the spices that the women took in order to anoint the body of Jesus.

The day concluded with a special assembly, where some of the children recalled the fun learning opportunities they had taken part in. It certainly was a reflective, memorable and special day for all children (and adults!) involved.

Rowan Dickinson



St Michael's School

www.stmichaels-dorking.surrey.sch.uk



St Michael's School's Spring Fête

Saturday 20th May 11 a.m. to 2 p.m.

Come and join the fun at School Lane, Mickleham

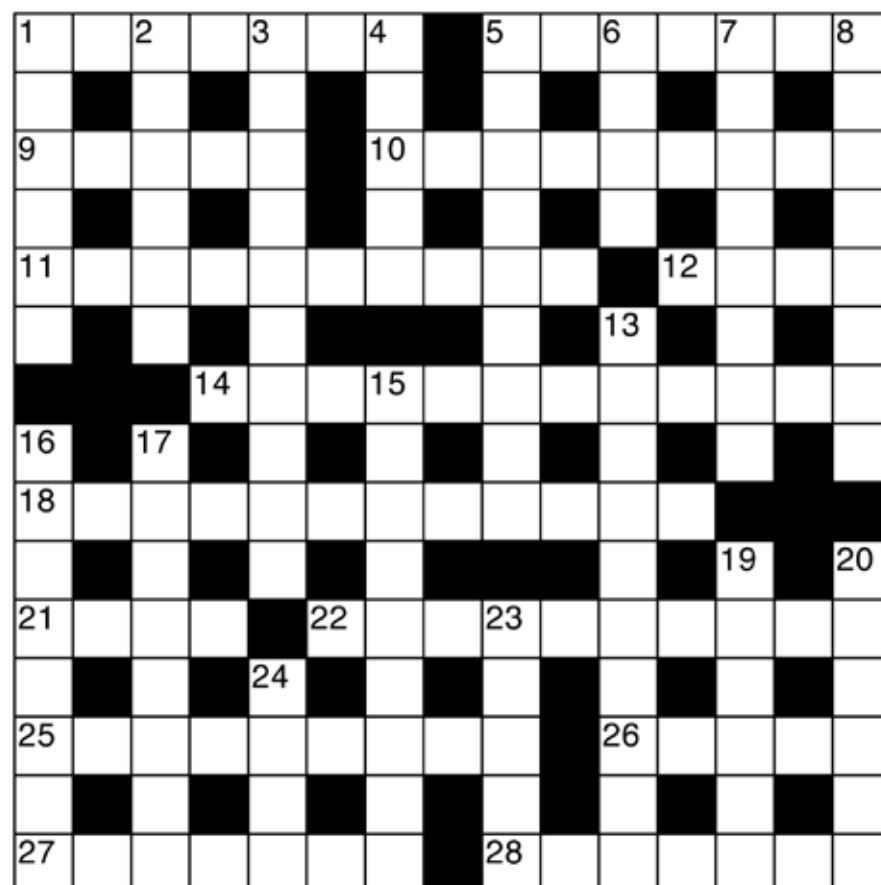
Gourmet BBQ, plant sale, chicken racing, headteacher in the stocks and much more!

Cryptic Crossword



Across

- 1 A mythical beast of a musical phrase soaked in gin (7)
 5 Artisan ordered to supply an empress (7)
 9 Creamy white, like a Welsh chap? (5)
 10 Visible bottom usually takes the trick (9)
 11 The French, the City, Los Angeles and North America - all backwards in using logical reasoning (10)
 12 European river reported to be smelly? (4)
 14 More generous online paper backs playgroup (12)
 18 Ewes slightly disturbed when in zero gravity (12)
 21 Worry about feature of 1D (4)
 22 After being critical, gives impression of the invisible man? (10)
 25 Education may be something you were warned about (9)
 26 The board indicates approval in both French and German (5)
 27 "Get naked" is Robert's partial order (7)
 28 Pressures to make morally bound e.g. boils over (7)



Down

- 1 If first goes last, 1A can be done on this instrument (7)
 2 I very much disallow lines of equal pressure (6)
 3 An unreliable bat? (3-2-5)
 4 I moan about Ruth's mother-in-law (5)
 5 The back half of a brontosaurus is handy for crossword fans (9)
 6 Deeds - or possibly words (4)
 7 Flood at home while a French girlfriend was there (8)
 8 Pair sign off in hope (8)
 13 Horses running the referendum? (6,4)
 15 Fourth rate friendship led to a romantic relationship (9)
 16 Deceitful and symbolic of theatre (3-5)
 17 I shouted out where they might be (8)
 19 Audacious syndicate of federal prosecutors (6)
 20 Hammerstein's one who won two (6)
 23 German car with zero noise (5)
 24 Somewhere here I did once read about the queen of Carthage (4)

A drone's-eye view of St Michael's School



A recent survey of the state of the school's various roofs and guttering was carried out using photographs taken by a drone.

ANSWERS TO APRIL CROSSWORD

Across

- 1 Abominable 5 Yeti 8 Latitudes 10 Basin 11 Bevis
 12 Truncate 14 Understudied
 17 Stout-Hearted 22 Escargot
 23 Aghast 25 Oomph
 26 Abasement 27 Deny
 28 Metaphoric

Down

- 1 Ad Libs 2 Octave 3 Aida
 4 Last Resort 6 Ecstatic
 7 Innuendo 9 Treen 10 Bantu
 13 Redecorate 15 Asteroid
 16 Coachmen 18 Torch
 19 Eagle 20 Career 21 Static
 24 Gala

Neil A Mason
 Established 1976



All electrical & plumbing work undertaken

Inspections and Testing
 Extra Points, Rewiring etc
 Security and Emergency Lighting
 Temporary Power and Lighting Hire
 Public Address and Sound Systems
 Installed or For Hire
 Complete Bathroom and
 Fitted Kitchen Installation

WESTHUMBLE

Telephone: 01306 889073

DAVID TOBITT CARPETS

FINE CARPETS SUPPLIED AND FITTED

We have over 30 years' experience working in Dorking and the local area

A comprehensive range of carpets available

We can bring samples to your home

Advice given on all types of carpet work



WE TAKE A PRIDE IN WHAT WE DO

01306 885032

www.davidthobittcarpets.co.uk

INSPIRATIONAL
Box Hill School
 for girls and boys aged 11-18



ADVENTURERS IN TRAINING

At Box Hill School we don't just teach...
 we work hard to prepare our young people for life beyond education by creating experiences that promote **courage, generosity, imagination, principle and resolution.**
 Let life's great adventure continue at Box Hill School.

Telephone: **01372 373382**
 or email admissions@boxhillschool.com
www.boxhillschool.com

MARTIN BURGESS LANDSCAPE AND GARDEN DESIGN



CONSULTATION SERVICE FOR
 GARDEN PLANNING, PLANTING
 AND MAINTENANCE

01737 842289 / 07966 183395

HART SCALES & HODGES SOLICITORS

We have been serving the Dorking community since 1782 and are proud to support our local parishes

Our services include:

- Buying and selling your home
- Extending your lease
- Commercial property
- Inheritance Tax planning
- Care fees and Asset protection planning
- Setting up a trust
- Wills and Probate
- Lasting Powers of Attorney
- Divorce Separation and Children
- Employment for employer and employee
- Litigation and dispute resolution
- Business advice

Please call us on 01306 884432 for a FREE initial consultation to discuss your requirements

www.hartcales.co.uk



6 en-suite rooms from £89 per night including breakfast

OPEN

Monday – Saturday: noon – 11 pm

Sunday: noon – 10.30 pm

BREAKFAST (open to non-residents) SERVED

Monday – Thursday: 7.30 – 9.30 am; Friday & Saturday: 8 – 10 am

LUNCH & DINNER SERVED

Monday – Thursday: noon – 3 pm & 6 – 9 pm

Friday & Saturday: noon – 3 pm & 6 – 10 pm

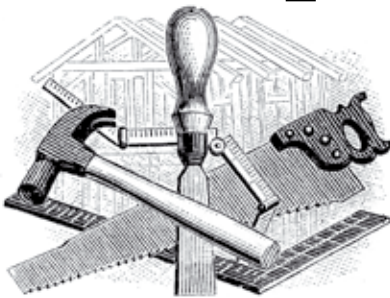
Sunday: noon – 6 pm

The Running Horses, Old London Road, Mickleham, Nr Dorking, Surrey RH5 6DU
Call Us: 01372 372279 Email: book@therunninghorses.co.uk

J S Wilson

Mickleham

Carpentry & Building Services



Extensions ~ Conversions
Refurbishments ~ Property Maintenance
Fully guaranteed ~ Fully insured

One call WILL solve it all

Contact Jason on: 07761 926684 or 01372 379359
jswilsonconstruction@gmail.com



RESIDENTIAL • COMMERCIAL
AGRICULTURAL • SCHOOLS • ACOUSTIC
HOARDING • GATES • SECURITY

RICHARDSON & BRADS FENCING LTD
T: 01306 640 143 - 01483 414 74

E: INFO@RBFENCINGLTD.CO.UK
W: WWW.RBFENCINGLTD.CO.UK

A: 83 SOUTH STREET, DORKING, SURREY, RH4 2JU
UNIT 45 MARTLANDS INDUSTRIAL ESTATE, SMARTS HEATH LANE, MAYFORD, GU22 0RQ

John Wadsworth

INDEPENDENT ESTATE AGENTS



CALL NOW FOR YOUR FREE VALUATION

01372 450500

www.johnwadsworth.co.uk sales@johnwadsworth.co.uk

A professional, efficient and friendly service