

West Ilsley News

www.westilsley.org

September 2010

EDITORS

Andrea Cook
Clock Cottage
☎ 281224

Liz Dray
The Malthouse
☎ 281688

westilsleynews@msn.com lizdray@btinternet.com

Deadline for the next publication is:

5pm on Tuesday 28th September

DIARY

SEPTEMBER

24th Coffee morning

OCTOBER

3rd Harvest lunch

BIG GREEN ACTIVITY BAG

West Ilsley recently applied for and were awarded a free "Big Green Activity Bag" from lottery funding. The bag is actually "orange" just to confuse you but is available for village use. The bag will be stored in the outside box at the cricket club and access to it can be given when the cricket club is open. The bag contains various family/childrens outdoor games - rounders, tennis rackets, kite, sticky mitts, outdoor twister etc. There is also a Kwik Cricket set separate to this and a junior badminton/tennis net.

I am meant to report back usage on a quarterly basis (I have warned them it will go quiet over the winter) and in the bag is a chart which I'd be grateful if you could fill in if you remember when you use the kit. Please shout if any queries.

Many thanks.

Liz Dray
281688/07766 413174

RECENT PAPERBACKS WANTED

Please could you hold on to any recent paperbacks for us to sell at the Macmillan Coffee morning on Friday 24 September. Feel free to leave in the porch at The Malthouse or call Liz Dray on 281688. Please could we have fairly new paperbacks only as we find that these sell best.

CHILDREN'S CHURCH, ALL SAINTS CHURCH

The next service will be in the church at 4pm on Thursday 16 September. Services are aimed at all ages from babies to older ones and last approximately half an hour followed by drinks.

If you would like any further details please do contact us on the following numbers:

Denise Brown on 01635 281825, Liz Dray on 01635 281688, Louise Taylor on 01635 280622.

MOBILE LIBRARY

This will be in Fir Tree Paddock from 2.10-2.40pm on Tuesday 7th and Tuesday 28th September.



World's Biggest Coffee Morning

in aid of

Macmillan Cancer Support

Friday 24 September, 10am - 12pm

The Poplars

Main Street

West Ilsley

For directions tel:

Alison Banks 01635 281705 or

Liz Dray 01635 281688

Also on sale:

Secondhand books

Phoenix Cards

Suzy's Preserves

Bewitched Accessories

Please bring your friends !

BIN COLLECTIONS AFTER THE BANK HOLIDAY

Just a reminder that all rubbish collections will be one day later next week due to the August Bank Holiday.



DOWNLANDS MONTHLY UPDATE - AUGUST 2010

Here is the latest neighbourhood update for the Downlands from Police Community Support Officer Dominic Bartlett.

The latest crime statistics for the neighbourhood can be found at:

<http://maps.police.uk/view/thames-valley>. It is another positive month for the Downlands area as all crime is down by 18.5 per cent compared with the same period last year, with vehicle crime falling by a massive 39.8 per cent.

In last month's newsletter I mentioned the need to be aware of bogus callers and distraction burglars. This month I would like to raise awareness to another type of caller, as we have received reports from members of the public saying that they had received a phone call from someone asking them about Neighbourhood Watch in their area and also asking about their home security. If you receive a similar call do not give out any information just politely say you are not interested and end the call. I would also advise you to report it to the police via the 24-hour Police Enquiry Centre on 0845 8 505 505.

I would like to stress the importance of reporting crime, whether it is anti-social behaviour, theft, burglary, or any other type of crime, we need to know about it. While I am out on patrol talking to members of the public they often mention crimes which have happened to them which they did not report to us, reporting crime helps us to see where crime is happening, and what type of crime, which will help us to focus our patrols.

Hare-coursing is still the top priority for the Downlands, as the Ridgeway and surrounding areas are a popular spot for this illegal activity. It is important for us to help tackle this problem by liaising with farmers, landowners, and gamekeepers to help reduce and prevent it from happening. We are anticipating that it will increase across August due to the harvest, so if you see people harecoursing please contact us immediately.

We have also been made aware of concerns for speeding in particular areas such as East Ilsley, Beedon, and West Ilsley. I attended Fiddlers Lane in East Ilsley on Monday 19 July between 8am and 9am to conduct speed checks for vehicles coming into the village. The road is a 30mph zone, and the results were as follows –

Vehicles not speeding : 128

Vehicles travelling between 31mph and 35mph: 42

Vehicles travelling between 36mph and 40mph: 11

Vehicles travelling 41mph+ : 7

I felt that it was important for me to know who my parish councillors are and for them to know who I

am, so across July I attended Chaddleworth, West Ilsley, and Leckhampstead parish council meetings and introduced myself and answered any questions that people had. I am hoping to attend Brightwalton's next meeting in September so if you would like to see me or have a question it would be great to see you there.

During July I also attended Beedon primary school to engrave pupils and parents bikes with their postcodes. It was a great day and I engraved approximately 15 bikes, which will help to prevent them from being stolen. If you would like your bike engraved I am happy to attend your home or if you would like to arrange a group of people who would like their bikes engraved please email me dominic.bartlett@thamesvalley.pnn.police.uk or contact me via the 24-hour Police Enquiry Centre on 0845 8 505 505.

WEST ILSLEY CRICKET CLUB

The date for the 2010 AGM has been set for Sunday October 3rd at 7pm in the pavilion where, amongst other things, you will hear about the tremendous progress that has been made with the youth section under the ECB's Clubmark accreditation. We will also discuss future development of the club including a proposed rebuild (and significant improvement) of the changing facilities.

With a beautiful setting and an impeccable ground our club is highly thought of by many visitors, be they passers-by, pub customers or opposition teams. This all requires a lot of work by a small army of volunteers but that army is far too small for the campaign. There is no conscription, but without additional help it will be all too easy to paraphrase Churchill's comment about the RAF post Battle of Britain! Think Kitchener in the style of Grace - your club needs you! Historical attendance hasn't been great with 18, 14 & 23 over the last 3 years so I would really like to encourage everyone to attend if at all possible to hear what has been going on and more importantly, to have a say in the club's future - after all, it is your club, it is a community centre and it is not all about cricket! Any queries or points for discussion to be directed at the club secretary, Justin Pilditch on 280553 or secretary@westilsleycricket.net.

ILSLEY EVERGREENS

On Thursday September 16th there will be a coach "Mystery Tour" outing, leaving from outside West Ilsley Church at 9.00 am. Members £7, non-members £10. Names to Julia Rockall 281597.

Aldworth Saturday Market's

EIGHTH BIRTHDAY

Saturday 11 September

9 a.m. to 12 noon

Aldworth Village Hall

FREE slice of cake for everyone!
CIDER TASTING
BBQ from 11 a.m.

LOCAL foods, ciders, crafts, plants etc.

Homemade Cakes & Refreshments

FRESH Fruits & Vegetables

FAIRTRADE groceries

Sweets & Treats

Bread & Papers (pre-order please)

Visitors given a very warm welcome!

Please support our community-run Market
(Aldworth village hall EVERY Saturday morning)

Details: Kathy 01635 578090

FOR SALE

Pine chest of drawers good size £20
John Lewis bunk bed with slide in desk,
book shelf, and chest of drawers all mid
pine 3 years old £30
Contact Jo or Tony on 281405

THE ROYAL BRITISH LEGION (RBL) - NEWS FROM YOUR LOCAL BRANCH - COMPTON, ISLEYS & NORREYS BRANCH

When the branch last gave you its news in January this year, we were thanking all of you who contributed to the local record Poppy Appeal collection in 2009 and preparations are now well underway for our 2010 efforts – another year during which calls upon RBL funds unsurprisingly continue apace. The almost daily casualty list from Afghanistan is never far from news reports – fatalities of course understandably take the headlines but we should remember the three fold number of life changing serious injuries that are incurred at the same time by our young men and women – all who will need our support into the future. More of that anon.

We are pleased to report a very successful branch visit to the National Memorial Arboretum (NMA) near Burton on Trent in Staffordshire on Sunday

18th April. A total of 15 attended, most travelling on the Downs School minibus kindly loaned to us for the day. The NMA, founded in 2003, is the UK's memorial to all those who have given their lives in the service of their country since the second world war – more than 16,000 of them – their names engraved on massive Portland stone walls beside some very moving sculptures. If you haven't visited this beautiful and poignant place, we highly recommend it!

The Branch ran a successful stall at the Compton Fete on Saturday 3rd July operating its now popular egg throwing competition and hopefully keeping the RBL in the public eye. It was hard work to raise £70 for the RBL but worth every splatter! Thank you to those who played and contributed. We were delighted to receive enquiries from two prospective new members during the afternoon. The Branch is small and we need as many new members as we can get. The annual membership fee is small at £11 and you will be joining a good cause. You do not have to have been a member of HM Forces – just a supporter of the aims of the Royal British Legion. **If anyone reading this notice is interested in joining the RBL please contact Alex Lister or David Norbury – contact details are as under.**

We are holding this year's annual lunch on Friday 1st Oct 10. The event, after last year's success, will again be held at the Compton Swan 1215hrs for 1300hrs. We are delighted to announce that Major Nick White, the Training Major at 7 Rifles based in Reading, has accepted an invitation to attend and address us on the modern TA and its contribution to operations and something of his experiences whilst serving with 2 Rifles in Afghanistan during 2009. Although many branch members and their partners are expected to be present, **the invitation to attend this event is open for anyone with an interest - you do not have to be a member of the branch.**

Although the exact cost is to be negotiated, you should budget on £12 per head – two course meal including table wine and coffee. Menu choices will be circulated with tickets. Please inform the secretary by phone 07770 326128 or by email davidnorbury@btinternet.com of your wish to attend – you will be very welcome.

As stated above, plans are now being laid for this year's Poppy Appeal collection – we ask that you give generously when given the opportunity as the Royal British Legion celebrates its 90th birthday this year. **Remembrance Day is on Sunday 14th November and our parade and service will be held at West Ilsley.** Readers will be aware that we rotate this event around the Branch's villages.

David Norbury 01635 578531

davidnorbury@btinternet.com

Alex Lister 01635 281343

alexplister@btinternet.com

FORCE OPEN DAY

An open day is being held on Saturday 4 September 2010 between 10.00am and 4.00pm, at Thames Valley Police Training Centre in Sulhamstead near Reading.

The open day aims to help promote greater understanding of the work of the various departments and specialist roles within the Force. The public will have the opportunity to look around the Force Museum, which is packed with the history of Thames Valley Police, and get the chance to meet some of the officers from the Force's specialist departments.

Admission is £2.50 per adult and under 16s go free. No dogs, except guide dogs, are allowed on site. Parking at the site is limited and will be available on a first-come-first-served basis. Disabled access is available.

Officers will be on hand to give a personal insight into their role and work; the majority of which the public might not be aware of because it goes on behind-the-scenes.

One of the main attractions of the day is the police helicopter which will be manned by the Chiltern Air Support Unit. The Roads Policing department will also be present with various vehicles. Also in attendance will be the mounted and dog sections. Displays will also be taking place throughout the day.

Crime reduction literature will be available, as well as information about joining Thames Valley Police either as a police officer, police community support officer (PCSO), special constable or volunteer.

Laura Deane,

Assistant Communications Officer | Berkshire West Communications Team | 0118 953 6342

ALL SAINTS WEST ILSLEY

Kay and Ian Fewtrell-Smith

September Church Services

5 th	All Age Communion	9.30 am
12 th	Holy Communion	8.30 am
19 th	All Age Worship	11 am
26 th	* No service at West Ilsley	

* Please see the lych gate notice board for details of other services in the benefice.

Ride + Stride – Saturday 11th September

Previously known as CROW – (Cycle, Run or Walk) – Visit as many of Berkshire's beautiful churches as you can between 10am and 6pm and raise money for your local church and the Berkshire Churches Trust. For sponsor forms and more details contact Ian Fewtrell-Smith on 281625.

Date for the Diary

Sunday 3rd October – Harvest Festival Service followed by Harvest Lunch – do try and keep that day free and join us in the village hall.

ALDWORTH

FETE

& FUN DOG SHOW

Saturday 11th September

2 p.m. to 5 p.m.

Village Hall & Rec. (RG8 9SB)

**Music, Attractions, Activities, Stalls,
BBQ, Teas, Ice Cream & MORE!!**

LOTS of FUN for all ages!

**Including: Toddlers' Play/Craft Area,
Bouncy Castles, Ferret Roulette
1st Hermitage Scouts - Basic Assault Pioneering
Tractors/Steam Engines, Blewbury Brass Band
Plants, Crafts & Foods, Bric-a-Brac & Tombola**

Supporting Berks Air Ambulance, R.N.L.I., Sue Ryder and Macmillan Care and St Mary's Church Aldworth

Details: Fete 01635 579287

**Dog Show schedule/entry form:
01491 671771**

CONGRATULATIONS!

Well done to Peter and Sandra and the team at Rowles farm – they have won for the second year running the “best farmed championship” award from Newbury Agricultural Society – follow the link to read the write-up on the Farming Monthly website:

<http://www.farmingmonthly.co.uk/the-news/latest-news/1-latest-news/743-rowles-farm-champions-again-.pdf>

LOGS

**Seasoned hardwood logs sourced within
five miles of West Ilsley**

£60 a load

Free delivery

Giles North

07786 437188

WHO TO CONTACT

VILLAGE HALL		
Audrey Tizzard - Treasurer and Bookings		281646
Rates: £7.50/hr Villagers £15/hr Non Villagers		
CHURCHWARDENS		
Alexandra Axtell	.281306	Ian Fewtrell-Smith 281625
TENNIS COURT		
Membership: Liz Dray - lizdray@btinternet.com		
Play without joining - to book: Amanda Knight - 281609		
PARISH COUNCIL		
Clerk:		
Alison Banks - Alison@poplars.org.uk		281705
Chairman:		
Sean Ryan - Sean.ryan@sunday-times.co.uk		281336
Jo Scriven - Jo.clifton@tynan-darcy.com		281405
Dries Hagen - dries.hagen@healthpml.com		281855
Alan Bloor - Alanpeter.bloor@virgin.net		281341
John Mountford - jgmountford@btinternet.com		281703
Fred Carter - fred_kathcarter@btinternet.com		281621

“Save the Giants” Barn Dance and Hog Roast

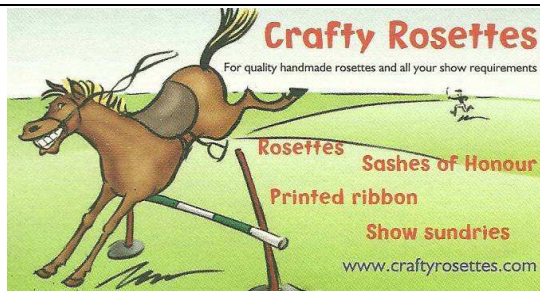
Celtic band “Mo Cairde”

**Saturday 25th September
at 7 p.m.
in Hampstead Norreys Village Hall**

Tickets: £15 adult, £7.50 child (up to 16)
£40 Family (2 adults & 3 children)
(Bar available – 1st drink included.)

Box Office: 01635 578624
Email: gillwilding@hotmail.com

Enjoy a great evening’s entertainment, food
& dancing while helping raise funds to conserve
**Aldworth St Mary’s
14th century stone effigies**



**Teri Muggerridge 01635 281443
07920 116207**

Domestic Electrical Installation

Building regulation Part P Compliant
installation/inspection/testing/fault finding
and certification

Portable Appliance Testing @ 110/240 VAC
Contact Keith Pentecost
Tel: 01635-281389 (East Ilsley)
Mobile: 07985-797333



Andrew Viney Tel: 0845 269 0306

www.logsforall.co.uk

Seasoned 100% Beech Firewood from FSC Certified
Sustainable Local Forests

Now taking orders for delivery in September 2010

FREE Local ‘no-mess’ Delivery

FREE bag of kindling with first order

Relax, secure in the knowledge that you’re well prepared for
the long, cold winter months with a well-stocked log pile!

2 Sizes Available: 6-9 inches (15-23 cm) and
12-14 inches (30-25 cm)

Rachel Chandler BSc (Hons)

McTimoney Chiropractor (GCC reg)

**Back, Neck and Shoulder Pain, Muscular Aches
and Tension, Pain, Discomfort and Stiffness in
Joints** are just some of the conditions that can benefit

from the gentle and effective McTimoney treatment
which is suitable for all ages.

To Find Out More Or To Book A Free Consultation
in Farnborough:

Phone Rachel on 07 87 94 75 557

Email: rachelbchandler@hotmail.com

Roger Stowell

Window cleaning

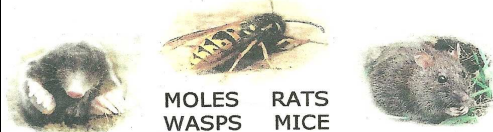
gutter clearance and general odd jobs

Telephone 01869 600628

PESTCO

ROBERT EDWARDS

WWW.PESTCO.BIZ



MOLES RATS
WASPS MICE
COCKROACHES
BIRDS
FLIES FOXES
SQUIRRELS ANTS

RESIDENTIAL, AGRICULTURAL AND
COMMERCIAL WORK UNDERTAKEN.

MOB:07796615818

01488 670028

PESTCO@HOTMAIL.CO.UK