

## PROPOSED RESTORATION

Most of the site will be restored to nature conservation habitats with some agriculture. This would be achieved using only materials from the site.

The southern extension area would include water based habitats. The western extension would combine wet grassland on the low levels with agriculture on the higher ground.

The site would be subject to an aftercare period of at least 5 years and would be managed in partnership with the RSPB.

For further details/information please contact:  
Tarmac Planning Information Line (24 hour answerphone)  
**0116 264 8551**  
Email: [langford.information@tarmac.com](mailto:langford.information@tarmac.com)

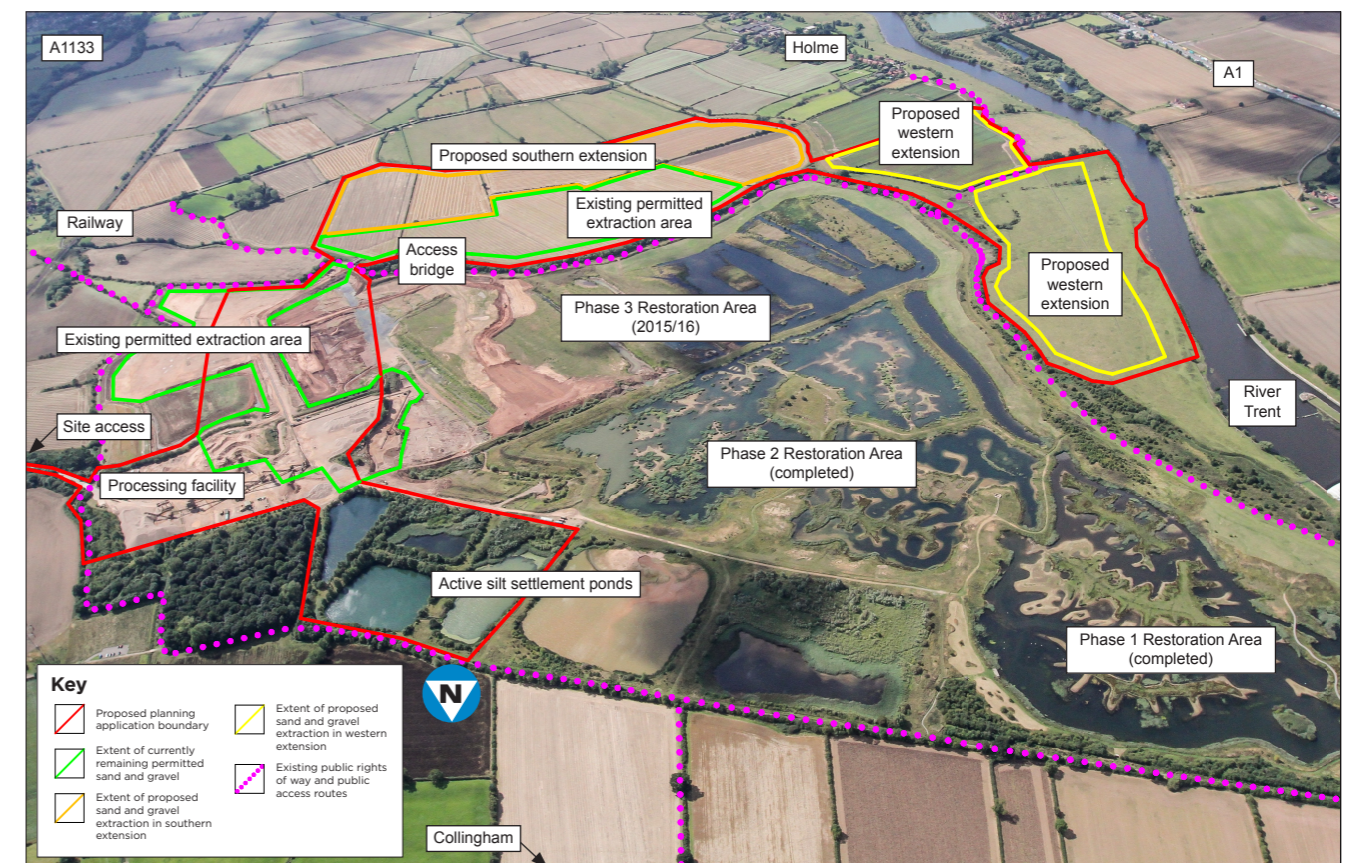


[TARMAC.COM](http://TARMAC.COM)

Published November 2015 as part of a public consultation programme by Tarmac Land and Natural Resources Department, Midlands Area Office, Granite House, Watermead Business Park, Syston, Leicestershire, LE17 1PL.  
"Tarmac" and the "circle logo" are registered trademarks. ©2015 Tarmac Trading Limited.



## COMMUNITY CONSULTATION



## Langford Quarry, Collingham, Nottinghamshire

Proposed extension of sand and gravel workings on two areas of land to the south and west of the existing quarry

**Wednesday 2nd December 2015 - Collingham Memorial Hall, 67 High Street**

**Thursday 3rd December 2015 - Holme Parish Church, Holme Lane**

**Both 4.00pm to 8.00pm**

Members of the public are invited to attend the public consultation exhibition

[TARMAC.COM](http://TARMAC.COM)

# EXISTING OPERATIONS

Planning consent for sand and gravel extraction at Langford was first granted in 1988.

An extension, taking workings south of the Slough Dyke, was approved on 9th March 2015 and operations started on 1st May 2015.

Phased extraction - using a long reach hydraulic excavator to load the as-dug material onto a field conveyor to transfer it to the processing plant - is followed by progressive restoration to water based nature conservation habitats, in association with the RSPB. On site facilities also include an aggregates processing plant, stockpiles and silt lagoons.

Langford Quarry produces 3 types of aggregate, as well as coarse and fine sands. These building materials are generally used in the manufacture of readymix and precast concrete products, for local construction and manufacturing markets.

Typical output is around 450,000 tonnes a year and the remaining consented mineral is likely to be totally exhausted by mid 2018.

Progressive restoration follows the extraction operations.

# THE PROPOSED DEVELOPMENT

Langford Quarry is currently contributing around 30-35% of the annual tonnage of sand and gravel produced in Nottinghamshire. The site works a high quality proven reserve of Trent Valley sand and gravel, which is a recognised strategic resource.

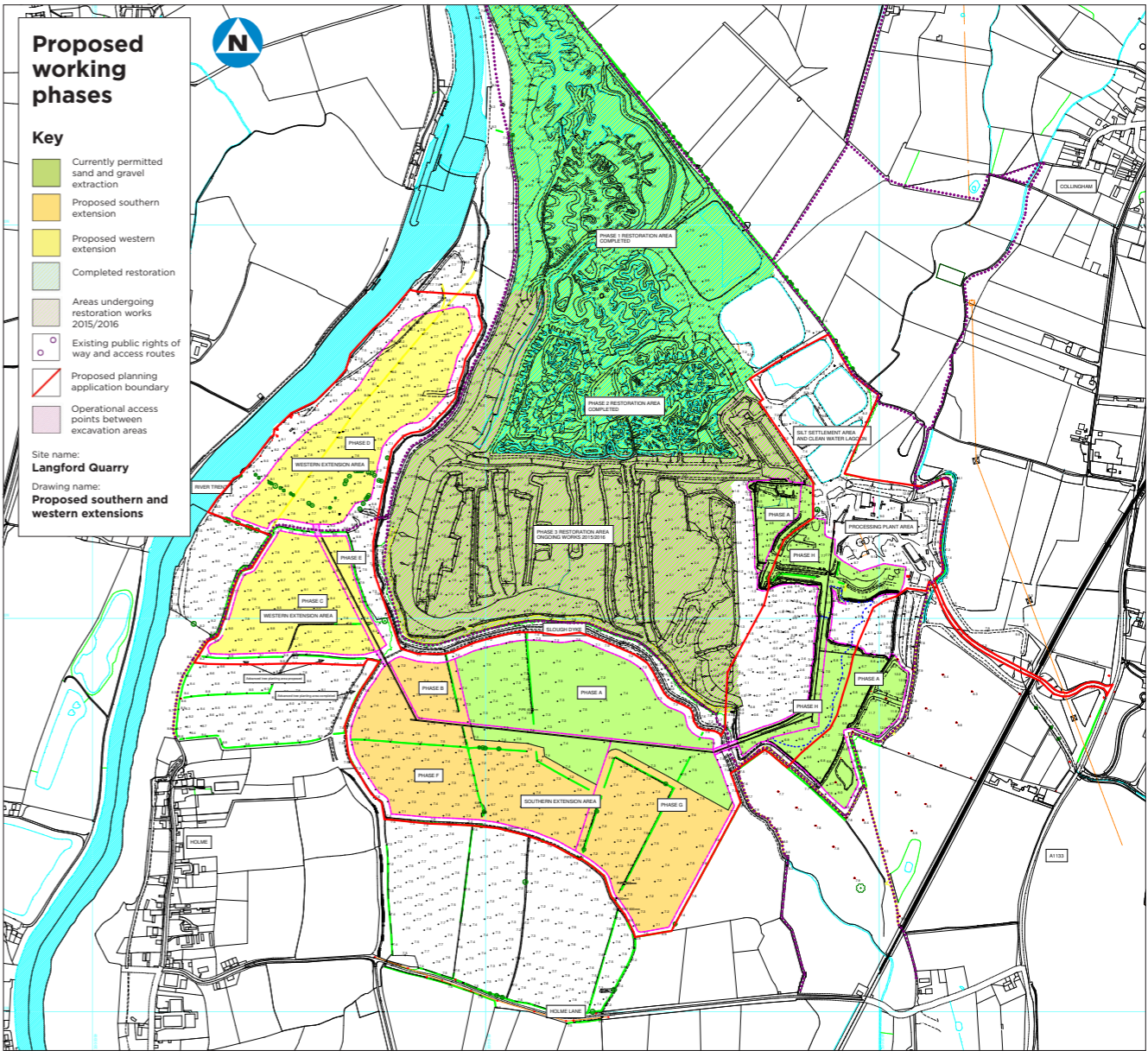
It is therefore a very important site to maintain a sustainable supply of quality construction materials to meet local demand.

The proposal is to extend quarry workings into 2 new areas, 1 to the south of the existing quarry workings and 1 to the west. Both these areas are identified for future sand and gravel extraction in the Nottinghamshire Minerals Local Plan Preferred Approach consultation document, published in May 2014.

Approximately 3.75 million tonnes would be extracted from the proposed extension areas over 8 years.

To ensure continuity of supply of construction materials in to the local market place, the new extensions are needed by summer 2017, so all the necessary pre-extraction development work can be completed.

To provide this lead time, Tarmac proposes to submit a planning application to Nottinghamshire County Council, during spring 2016.



Controlled public access within RSPB nature reserve

## OPERATIONAL ELEMENTS WHICH WOULD REMAIN UNCHANGED WOULD INCLUDE:

- phased extraction and progressive restoration
- use of hydraulic excavator and field conveyor system (with dump trucks in part of the western area)
- use of existing processing plant
- operating hours 7am - 6pm, Monday to Friday and 7am to 1pm Saturday
- vehicle access point onto A1133 Newark Road (right turn only)
- environmental management, monitoring and control systems
- continued employment of 9 direct and 24 indirect (hauliers and contractors).

Sand and gravel being extracted from the dig area