

Your Parish Council

Chairman: Bryan Nanson

Vice-Chairman: Allan Clark

Pete Edwards, Martin Hatley, Julian Jones,

Graham Roads, Margaret Rothwell, David Stevens, Julie Trotter.

Clerk to the Council: Doreen Matthews.

Parish Website: www.ampfield.org.uk

The public are welcome to attend all Council and Committee meetings, the dates and times are advertised on Parish Notice Boards and on the website

Your Parish Councillors are the first tier of local government and are unpaid.

© Ampfield Parish Council



New Signs for the Village Hall

How do I get in touch with Ampfield Parish Council?

Contact: Clerk to the Council: Doreen Matthews,
Blue Haze, Ampfield Hill,
Romsey, SO51 9BD
Tel: 01794 368 437
Email: clerk@ampfield.org.uk

Ampfield Parish Council

NEWSLETTER

March 2017

Issue 29



Ampfield Parish Assembly

Monday, 24th April 2017

7.30pm at Ampfield Village Hall.

All parishioners are warmly invited to attend

CONTENTS

| | |
|-------------------------------------|----|
| Chairman's Review of the Year | 3 |
| New Ampfield Pavilion | 4 |
| Planning | 6 |
| Village Design Statement Update | 7 |
| Ampfield Countryside Heritage Area | 8 |
| Ampfield School | 8 |
| Transport Liaison & Road Safety | 9 |
| Friends of Chapel Wood | 10 |
| Ampfield Market & Catch-up Café | 11 |
| Borough Councillor's Report | 12 |
| Finance Report | 14 |
| Allotments | 15 |
| Ampfield Parish Website New Version | 16 |
| Ampfield Village Hall | 17 |
| St Mark's Church | 18 |
| Parish Assembly Agenda | 19 |

ANNUAL PARISH ASSEMBLY

To be held at

**AMPFIELD VILLAGE HALL
ON MONDAY, 24th APRIL 2017
AT 7.30PM**

The Agenda for this Annual Parish Assembly is:

Apologies for Absence
Minutes of the Annual Parish Assembly held on 25th April 2016
Matters Arising
Chairman's Review of the Year
Borough Councillor's Report
Council Finances & Administration
Planning
Village Design Statement
The New Recreation Ground Pavilion
Transport and Road Safety
Allotments
Friends of Chapel Wood
Ampfield Countryside Heritage Area
Other Reports - see Parish Newsletter
Any Other Competent Business & Open session

Light refreshments will be served at about 9.30pm.

Doreen Matthews
Clerk to Ampfield Parish Council

ST MARKS CHURCH

This year has for me, been a year of growing into the Benefice, getting to know the Churches, its people and the communities better. It has been lovely to meet new people and welcome them to church or into the wider church community through our outreach. The fact that St Mark is open during the daytime has sparked the possibility for many conversations about faith or just for the opportunity to pray with or for those who venture in. It is lovely to see the grounds used by local families and dog walkers and now they can come inside for some quiet time too.

This year has seen a closeness of the two worshipping communities of St Mark, Ampfield and All Saints, North Baddesley coming together to share services and resources. Though finances are still separate and still a struggle for the relatively small worshipping community to keep the demands of diocese and keeping a historic building going. This year we will have to do some rather major work on our bells and bell tower which have deteriorated over many years and are now unusable and could possibly become dangerous. The cost of this is going to come to possibly tens of thousands and we will be seeking grants and goodwill of neighbours in our attempts to raise this money.

We have also re-launched our website at **www.acnb-church.faith**, and Facebook page, so do follow us and see what we are up to throughout the year!

Revd Victoria Ashdown
Vicar of the Benefice of
Ampfield, Chilworth and North Baddesley.

Help Keep Our Footpaths Open

Following the retirement of our current footpath warden, we are seeking new volunteers from the parish.

Our network of footpaths is very important to us; in a recent questionnaire over 80% of respondents said that this is a major attraction of living in the parish.

If you enjoy walking in the countryside, please consider volunteering, to let us know of any footpath problems that you encounter. The role can be shared, is not demanding and makes a big contribution to keeping our countryside open and available for all to use.

If you would like to find out more, please contact
graham@ampfield.org.uk

CHAIRMAN'S REVIEW OF THE YEAR

As visitors to the recreation ground will observe, a new pavilion, funded by grants, is in course of construction. It is hoped that it will be completed in the summer of this year. It is an exciting development – the biggest project that Ampfield Parish Council (APC) has ever undertaken.

The trial of allowing dog walking at the Recreation Ground will end on 21st April with the imminent start of the cricket season. An evaluation of the trial will be done in July and comments are invited.

To also help dog walkers in the parish, a temporary bin has been installed at Morleys Green for receipt of dog waste and a permanent bin will soon be installed there and at four other locations in the parish which are adjacent to dog walking routes.

As set out in the finance report, the precept for 2017/18 has been set at £34,419 which is an increase of 1.53%. However, the impact on individual households is a decrease of 4.7% due to the increased number of households in the parish since last year.

Enforcement matters, such as environmental health regulations, tree felling and planning control are the responsibility of Test Valley Borough Council (TVBC). However, APC is often the first port of call for such concerns. We try to provide advice to parishioners and sometimes pursue matters on their behalf.

A policy for the rationalisation of speed limits on derestricted roads in the Parish has been adopted. This will be “pushed” whenever possible in interactions with Hampshire County Highways Department. Based on previous experience we do not expect instant success, but we will persevere.

As the owners of the Village Hall, we have agreed a new, improved, lease with the Village Hall Committee which is going through the legal authorisation processes. We are looking forward to working with the Committee to facilitate improvements to the hall.

The Village Design Statement (VDS) project is well underway and is planned to complete in mid-2017. The existing VDS published in 2003 has served us well but has lost impact due to its age. It applies to the whole parish and is taken into account in all planning applications. It is not a “silver bullet” but it is a powerful document which really helps in dealing with “inappropriate” planning matters.

The new allotments are a success, though not without problems. APC is learning about allotment management “on the job.” We have established a good working relationship with our “Allotmenters” and together are addressing the challenges.

APC have now taken responsibility for maintenance of the open spaces at Morleys Green. Chapel Wood is looking good thanks to the efforts of the

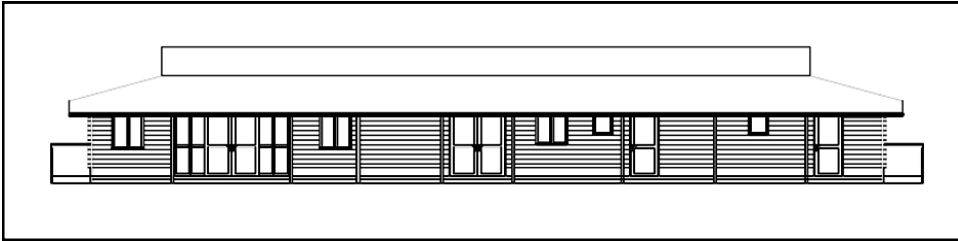
(Continued on page 4)

CHAIRMAN'S REVIEW OF THE YEAR (continued)

volunteers who turn out every month. A recent act of criminal damage to almost all of the signs in the wood was quite distressing; the police have been informed and repair and replacement of the signs is under way.

A NEW PAVILION FOR THE RECREATION GROUND

After about 11 years we are finally moving forward on the construction of a new pavilion for the Recreation Ground. It's been a long haul and as so many new people have moved into the parish during this time, a brief history seems appropriate!



The Parish Council purchased the Recreation Ground in 2003 along with an existing cricket pavilion which was in a bad state of repair. We started to work on a replacement building and in July 2005 Planning Application TVS.10695 was approved by Test Valley Borough Council. A minor modification was then approved to install a playground. The pavilion is a simple and functional building as shown above.

The old pavilion was removed and a concrete base for the new pavilion was laid. The playground was also installed. A builder was selected to construct the new pavilion - but then the required funding for the pavilion was not delivered!

Since then we have used two portaKabins placed on the concrete base (which fortunately were gifted to Council), for cricket team changing and tea facilities. One of the portaKabins was replaced by a container after storm damage in January 2014.

Recently funds have become available, primarily from the developers of Morleys Green and Broadgate Farm, together with a grant from TVBC approved by our Borough Councillor. This means that at long last we are now able to restart the project.

The original planning permission is still in place and following a competitive tender the contract to build has been let. At the time of writing work is well

AMPFIELD VILLAGE HALL

As it is now officially spring we can say that the Village Hall has had a busy autumn and winter. The hall received a new landlord in the form of the parish council following their purchase of the hall to secure it for the community. As the hall is a registered charity the change has resulted in a lot of work on both sides to establish a new lease and a new deed of trust.

We continued to identify ways to improve the hall such the installation of specialist panels in the new extension to improve the acoustics. In the next few months we plan to upgrade the broadband and purchase a computer on which to host a new village hall website, supported by a community grants from TVBC.

In terms of the day to day activity in the hall we sadly saw the closure of the pre-school after nearly thirty years. However on the positive side we have successfully backfilled a good proportion of the hours left vacant with new activities and a growing number of private functions as word about the quality of the facility has spread.

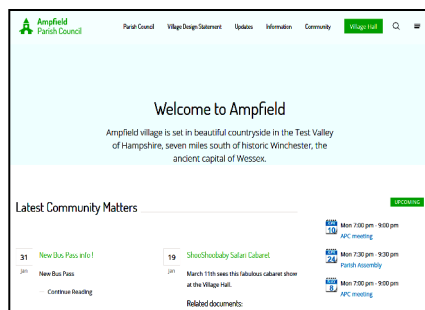
The cost of running, maintaining and insuring the hall continues to increase and the committee are working hard to keep charges at existing levels through fund raising activities. These activities are financially important but they also provide opportunities for the community to connect and enjoy themselves. In September we ran a sell-out race night which with your support raised £1700 and in December we hosted the annual pantomime which was well attended and great fun. On the 11th March we hosted the Great Cabaret Safari presented by Shoo Shoo Baby. Look out for future events including a quiz night and possibly a summer picnic on our new Village Green.

Thank you to all who have supported these activities and we look forward to continuing the development of all aspects of the village hall.

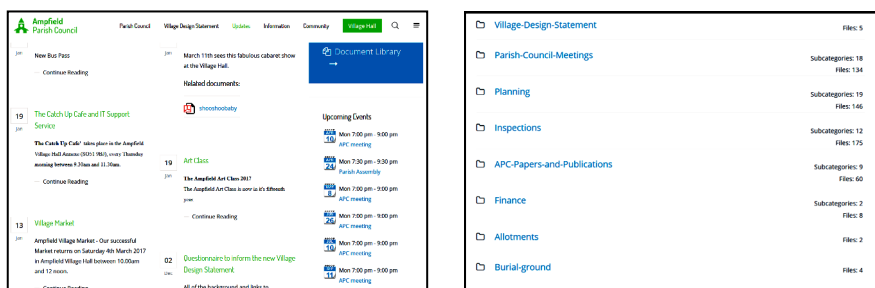
Ampfield Village Hall Committee

AMPFIELD WEBSITE NEW VERSION

The Parish Council have updated the web site www.ampfield.org.uk to deploy it's fourth version. The website has been made mobile friendly, which is an important change, as approximately 20% of our viewings are now via phones and tablets.



The home page has been simplified. Calendar events for the coming weeks and the latest postings for Community Matters appear prominently for quick access. These will automatically be removed when their relevant date has passed, ensuring that the information displayed is always up to date.



The downloading is now easier by using a new App which is part of the website.

Latest documents are also available under the 'Updates' tab, with all site documents easily accessible by clicking the blue Document Library box on the 'Updates' page. Once in the Document library, all the files we have are categorised by topic and area and year.

Future improvements for 2017 are to add a dedicated page for the allotments (with photos through the year) plus the details of getting on the allotments waiting list.

underway and it is hoped the pavilion will be available for at least part of the 2017 cricket season.

As the portaKabin and container have now been moved to make room for the new construction, our cricketers are using alternative arrangements for changing and teas until the new pavilion is completed.

The planning consent requires the creation of a car park and we are looking into the option of moving the existing playground to a new location on the recreation ground.



Construction progress of the new Ampfield Pavilion

Dog Walking on the Recreation Ground

The trial period to allow dog walking on the Ampfield Recreation Ground outside the cricket season will finish on 21st April 2017. During the winter months the Parish Council have received both favourable and adverse feedback regarding dogs on the ARG.

The trial will be evaluated in July and a decision made as to whether dog walking should be allowed during the 2017/8 closed cricket period. The Parish Council would appreciate feedback from interested parishioners regarding the approach to dog walking.

PLANNING**Planning**

Since the beginning of April 2016 the Parish Council Planning Committee has met on 14 occasions and considered 51 applications of which 16 were concerned with tree work. Of the remaining 35 applications the Planning Committee objected to 8, which is very similar to that of the previous year.

Morleys Green and Broadgate Farm Developments

The Morleys Green estate is now maturing and is gradually becoming an attractive feature of the centre of Ampfield Village.

Broadgate Farm is now almost complete and has improved the character of what was previously a rural industry site in the parish.

Planning Applications not quite in Ampfield

One interesting problem which has recently arisen is that of a planning application just outside a parish boundary. The question we asked was; "Should the Planning Authority have informed the adjacent parish?"

A proposed development off Crampmoor Lane, in Romsey Extra Parish had a shared boundary with Ampfield. We were alerted by Ampfield residents who live in Crampmoor Lane and thus we were able to examine the plans and submit a response. A similar situation arose with a proposed major development off Flexford Road which although within North Baddesley Parish, would have had a significant impact on Ampfield residents. Again we were alerted and were able to submit a response on behalf of Ampfield.

This problem is not one of the Planning Authority's making but will occur from time to time. If you become aware of such situations, please contact us.

TVBC Southern Area Planning Control Committee (SAPC)

When a TVBC Officer recommends approval of an application to which the Parish Council has objected, your Borough Councillor Martin Hatley, will usually 'call in' the application to the SAPC. This tends to happen about three or four times a year, giving the opportunity for the Parish Council to present our objections verbally and Borough Councillors to question us on our objection.

Overall APC have been reasonably successful with these objections, but often, if refused by the SAPC against the recommendation of TVBC Officers, the Head of Planning will again call in the application to the Planning Control Committee. This is made up of Borough Councillors from across the whole of the Borough not just those in the southern area. Thus again APC is given the opportunity to present their arguments for Borough Councillors to decide. Fortunately this requirement for a presentation to both Committees has only happened once in the last twelve months!

Statement are running at just under £1000, much of which will be covered by grants

Precept and Budget for 2017/2018

Regular reviews of expenditure were carried out throughout 2016/2017 to monitor costs and determine outturn. A budget of £52,039 was set for the next financial year 2017/2018; this was a net increase of just over £4,825 compared with the current year. Much of this amount was due to provisions being made for expenditure in relation to the running of the new pavilion, a grant for improvements to the Village Hall and a revamp of the War Memorial garden. The remaining expense items showed modest increases or decreases across the board. That expenditure, together with anticipated receipts, produced a Precept of £34,419. This is an increase of 1.53% over the previous year.

Details of the accounts will be available at the Annual Parish Assembly.

Doreen Matthews
Responsible Finance Officer

ALLOTMENTS

It is nearly a year now since the new allotments were handed over to the first sixteen parishioners. If anyone has walked past the allotments they will have seen quite a mixed set of crops in summer 2016 with classic potatoes to fruit bushes in low net cages.

Some plots have raised beds to combat the poor soil and hard ground. A local parishioner has offered several tons of manure to the allotment holders to improve the soil condition and this should see an improvement in the growing capability. There have been a few allotments changing hands but we now have a stable group and a healthy waiting list as well. The recent purchase of ground weed control netting should help to keep the untended sections of allotments tidy and the Parish Council has set aside monies for hire of equipment to improve the soil quality. The allotment holders meet every other month with Parish Council representatives. The meetings are a chance for everyone to learn something new. There is a new page coming on the Parish website which will relate to the allotments.

We are looking forward to a productive season, and possibly the first crops to be sold at the Village Market? If you would like to put your name down on the waiting list then please contact The Parish Clerk.

FINANCE REPORT

Our accounts will look quite lopsided this year with receipts far outweighing payments as we bank the S106 Developer monies for the maintenance of Morleys Green. This will right itself partially in the next year as costs related to the new pavilion come through the system. We have learnt that being allocated monies in S106 agreements is not the same as actually getting it when you want it or need it! Persistence is necessary. VAT is not something we spend much time thinking about except to reclaim it twice a year but the building costs of the pavilion, and its use once built, have VAT implications that need to be carefully considered. We are taking expert advice on this.

Assets

We are now the leaseholders of the Village Green and all other open spaces at Morleys Green. Three lovely teak benches have been placed around the Village Green for the whole community to sit and enjoy the view. Our original speed limit reminder sign became uneconomic to repair and we acquired a new one in July which has the added facility of monitoring traffic volume. The dipping platform by the pond in Chapel Wood, which was destroyed in a storm a few years ago, will be rebuilt in the next few months. The speed sign and dipping platform were funded through S106 monies; the benches were a gift from the Perbury Group. The old map board at the Village Hall, which had become so faded with the sun that it was unreadable, has been disposed of. Work has finally started on the long-awaited pavilion on the Recreation Ground which will be a community asset of great potential.

Current Financial Year 2016/2017

At the time of writing, receipts and payments for the current financial year 2016/2017 are not yet complete; Cllr Bryan Nanson will give an update at the Annual Parish Assembly on 24th April. However, receipts were £176,431 to end February 2017 which is an usually large sum for us. The major part of this figure - £114,481- comes from S106 monies from the Morleys Green development to pay for ground maintenance of the site for the next 20 years. Other receipts include the precept at £33,902, income from the Recreation and Burial Grounds of £2,350, VAT refunds of £2,167 and a grant from Test Valley Borough Council of £9,400 towards the purchase of the freehold of the Village Hall which happened in the previous financial year.

Expenditure to end February 2017 was £35,625. Most payments relate to routine maintenance of our community assets of Chapel Wood, and the Burial and Recreation Grounds, and on their loan repayments. Alongside these are our new responsibilities of ground maintenance of Morleys Green and of allotment development. Costs related to the review of the Village Design

UPDATE TO THE AMPFIELD PARISH VILLAGE DESIGN STATEMENT

As you will know, the process of updating the Ampfield Village Design Statement (VDS) has started. The first part of the project, the Questionnaire, is now substantially complete. The Ampfield VDS Team is very grateful to all those who kindly took the time to fill it in and return it. The answers are currently being analysed and the results should be available shortly. Once these have been carefully considered, a preliminary version of the revised VDS will be prepared. This will include a first draft of the Planning Guidance notes, reflecting the comments and observations made by parishioners in the questionnaire.



There will then be a review by the TVBC planning officers to ensure that there is no conflict with the Revised Borough Local Plan. During the summer the team will begin a period of public consultation where they will review the draft VDS with parishioners at a number of public exhibitions.

These exhibitions form a vital part of the overall process and the VDS team need as many residents as possible to participate and contribute. The responses gained will then be incorporated into a second draft of the VDS. The finalised document will describe the most important characteristics of the parish and how future development should respect, complement and enhance them.

Once completed and adopted as a Supplementary Planning Document by TVBC, the VDS must be taken into consideration when assessing future planning applications. This document, based on significant public participation and support, can influence the design of future development in Ampfield for the next decade or longer.

We are grateful to all members of the VDS team for their hard work and dedication and also to those parishioners who have contributed and helped in the process.

AMPFIELD COUNTRYSIDE HERITAGE AREA & FOOTPATHS



The annual Boxing Day walk was well attended with about twenty members of the group accompanied by a number (unspecified) of dogs. The weather was kind although the ground underfoot was somewhat muddy. There is a proposal to undertake another walk this summer, probably incorporating the area along the River Itchen. Full details will be available on the Ampfield Parish Council website and the parish notice boards.

The next evening meeting is scheduled for November, when we are delighted to announce that Liz Hallett has agreed to talk to us on the history of Ampfield and to share a part of her fascinating collection of anecdotes, fully supported by her wonderful collection of old pictures. Liz is a renowned local historian as well as a very entertaining speaker. Full details will be available nearer the time.

AMPFIELD SCHOOL

Ampfield CofE Primary School continues to thrive with over 48 children, aged 4-11, and has benefited from a very stable number on roll this year. There are three classes, each with a high adult to child ratio and we are over-subscribed in the current Year 2 cohort. Children and parents value the small school environment and the quality of relationships that can be developed.

The school benefits from the security of being part of a federation with John Keble CofE Primary School which allows staff to work across the federation. This allows for better opportunities for staff development as well as enabling children to have more experiences. The schools have a new uniform, logos and website which look very smart indeed. Please visit the website at www.ajkfed.com

As well as serving Ampfield residents, many of our children come from out of catchment, with families as far away as Southampton travelling to enjoy the small village school experience we provide. There is a very pro-active parent group and, by working together with the school, they have secured £10,000 of National Lottery funding for an exciting climbing frame in the school playground. It has been a pleasure to see so many local people at our community worship events at St Mark's Church and Rev Victoria Ashdown is a regular visitor to the school.

If you would like to visit us for a brief tour, or to enquire about spaces, please call Mrs Dobson on 01794 368219.

Marcus Roe

Executive Headteacher

Federation of Ampfield & John Keble CofE Primary Schools

home. We have not just been building houses but we have been building communities – with first class facilities for residents.

In Romsey, the new community hall, pitches, pavilion and area of nature conservation at Abbotswood will be complemented by Ganger Farm becoming a hub for Romsey's sporting infrastructure and home to a consortium of local clubs. Its vast facilities will include grass pitches, floodlit astro pitches, a massive sports pavilion and other vital 'sporting' accommodation.

We have committed £250,000 to a Romsey Flood alleviation scheme and I am pleased to report that Test Valley now has more Community Resilience Plans than anywhere else in the county.

Despite the challenging financial situation, we have still invested £1.5m from the New Homes Bonus to directly benefit community projects. Some 153 projects have benefited through our Community Asset Fund and the Councillor Community Grant scheme including the Ampfield Village Hall and new Sports Pavilion.

Our work with 8 pilot parishes funded by the Department of Communities and Local Government for Neighbourhood planning, has led to the production of a Test Valley Community Planning Toolkit which will benefit all parishes.

The Romsey Future Project, which I chair, launched its main document during the summer with its initial action plan. It has already delivered on some ambitions, including making the town centre more accessible and producing a management plan for Fishlake Meadows.

Through Project Enterprise we will continue to develop innovative ways of generating new income streams and the rate of return on our completed projects is forecast to be 7.8% in 2016/17. That's an extra £1.3m over what we would have received if money had remained in our reserves.

We eagerly anticipate having the land and the investment to implement the management plan for Fishlake Meadows in Romsey. More than 60 hectares of highly sensitive wetland, will be made accessible to the public for ecological pursuits and informal recreation.

More enhancements to Romsey town centre are scheduled to start early next year. The improvements will provide residents, as well as visitors, with a fresh-looking town centre that will be easier to navigate on foot, while maintaining the look of the town's historic character.

Martin Hatley

Borough Councillor

BOROUGH COUNCILLOR'S ANNUAL REPORT

As well as being your local Borough Councillor I remain Deputy Leader of the Council and the Portfolio Holder for Planning Policy and Transportation.

It was in the latter role that, as reported in last year's report, I had a meeting at the House of Commons with Brandon Lewis, the then Minister of State for Housing and Planning together with my fellow Portfolio Holder for Building Control. We highlighted various deficiencies in the planning processes including the methodology used for calculating the 5 year housing land supply figures which often led developers to create land banks of building land on which permission had been granted which in turn led to further applications having to be granted on less suitable land. We are delighted that the Government's new Housing White Paper (Fixing our Broken Housing Market) has taken on board several of our suggestions.

The Borough Local plan which we adopted this time last year is now in place and is protecting the Borough from unwanted development. There was a High Court Challenge by local landowners but the High Court Judge threw out their challenge and awarded the Borough Council costs.

The proposal to increase the Borough's Band D council tax by £5 per annum (10p per week) was not made lightly but, faced with continuous cuts to our budget from central government, we must safeguard the increasing demands on our services as well as strive to meet the aims and aspirations of those who live, work, enjoy and contribute to our Borough.

We do this by continuing to invest in Test Valley and by scrutinising every pound we spend to ensure value for money. We have not only invested in visible projects such as enhancements to Romsey and Andover town centres but also less visible projects where financial prudence and business acumen in property investments have given us a greater return for our money than the banks – called Project Enterprise. This in turn can be re-invested for the benefit of all.

So, let us look at what some of those investments and benefits have been during the last year.

The successful bidders for the Leisure Management contract intend, this year, to commence improvements at the Romsey Rapids, Romsey Sports Centre and Knightwood Leisure Centre. In addition to providing us with much better facilities, it will help us make significant financial savings. Our new housing strategy was put in place and is already helping local people access a decent

TRANSPORT LIAISON AND ROAD SAFETY**Public Transport Services**

There has been one minor change to services in the past year. Hampshire County Council (HCC) placed a new subsidised contract with Bluestar to run the Service 36. In this contract the route section between Romsey and Winchester (which provided for just 4 busses per week through Ampfield) was discontinued.

Web links for all Ampfield Public Transport Service timetables can be found on our website www.ampfield.org.uk under information/transport.

Highways Works

The A3090/Jermyns Lane junction restructuring was completed in 2016. At times there was significant traffic disruption and some other parish roads (notably Green Lane) suffered increased traffic volumes. The works are now completed and the redesigned junction does provide a clearer and safer traffic environment.

Developer funding has now been released for traffic calming changes to the A3090 in the Ampfield Village area. We have had an initial meeting with Test Valley Borough Council (TVBC) to review priorities regarding traffic calming and the extension of the cycleway through the village. Currently TVBC are developing some initial proposals and as more detail becomes available we will communicate this to the parish and seek public feedback. Funding is also now available for an additional bus stop shelter, to be placed at the Potters Herons A3090 westbound stop.

The Lengthsman programme will receive HCC funding for another year and the contract is currently out to tender. This small but useful resource allows us to complete those lower level highways tasks which make a difference to the look and feel of the parish.

Traffic Speeds

In 2016, developer funding enabled the purchase of a new Speed Limit Reminder Sign (SLR) which has a speed measurement capability. It proved to be a timely purchase, as shortly after it was received our 7 year old unit failed and was beyond economical repair. When collected we will post traffic speed and volume measurements on the APC web site for public review. Council have also developed an overall approach to speed limits on derestricted roads in the parish and this is also available on the web site for review and comment.

FRIENDS OF CHAPEL \WOOD

It is pleasing to report that throughout the past year the Friends of Chapel Wood have continued to make good progress on a number of important longer-term projects.

In the burial ground, we have been endeavouring to reduce the impact of the banks of rhododendron that have been encroaching over the years. At last, we are contemplating grubbing out and shredding the roots. Our objective is an open woodland burial ground that can be laid out in an attractive and effective manner to provide peace and tranquillity for all members of the community. Hopefully, the coming year will see this completed.



Also, over the next few months we are planning to rebuild the dipping platform by the pond. The finance for this is now in place and we hope to have the job finished in time for the school's summer term. We can then begin the job of opening up the vistas of the church in that area.

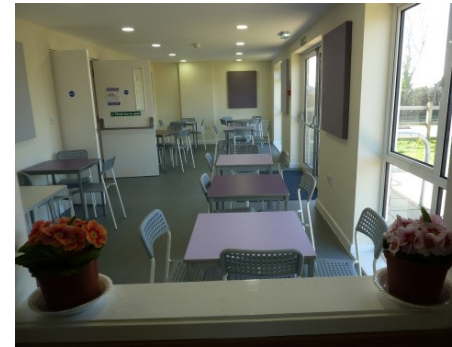


Finally, it is important to acknowledge the time and efforts given freely by our willing group of woodland volunteers. Without them, none of this could be achieved. As a parish we owe them much gratitude for the pleasure provided to every visitor to the woodland.

AMPFIELD MARKET & THE CATCH-UP CAFE

The Ampfield Market takes place between 10.00am and 12noon in the Village Hall on the first Saturday of ten months of the year. Our sales tables display locally sourced, good quality items, including Fairtrade foods, fruit, vegetables, cakes, bread, preserves, plants, books, cards and an eclectic range of crafts. Our Market continued to thrive in 2016 and the December Market was the most successful ever, a raffle raised £105 for a cancer charity. Our great reputation brings visitors from far and wide. The Market team, Claire, Diane and Sue generously volunteer their time and baking skills to provide a wonderful selection of seasonal cakes to serve with fresh coffee in our sunny hall annexe. Come and visit us soon, we definitely offer the best value refreshments in Hampshire! We are proud to have raised over £19,300. All the proceeds continue to support our lovely Village Hall.

Dates for 2017:- April 1st, May 6th, June 3rd, July 1st, September 2nd, October 7th, November 4th and December 2nd.



The Catch Up Café , Technology Support Service and Mobile Shop.

The Catch Up Café opens every Thursday morning between 9.30am and 11.30am in the hall annexe. We have attractive new tables and chairs and the new acoustic panels compliment the room and improve the sound quality. Our refreshments are seasonal and delicious. Our community Café is run entirely by volunteers and all the proceeds go to hall funds. We now provide free Wi-Fi and a technology support service during Café opening hours to help you with any computer problems. The Mobile Shop is also open every Thursday morning, offering a wide range of groceries including bread, milk, toiletries and fresh produce.

For more information on the Market, Café or shop, please contact Julie on 02380 254587

Julie Trotter