

# MICKLEHAM PARISH Magazine

A community magazine for Mickleham and Westhumble



October 2017



# TRU- Professional LawnCare

**A lawn is never JUST a lawn**

- Fertilisation • Weed and moss control
- Aeration • Scarification • Insect control
- Disease treatment • Hard surface weed control

Call now for a free LawnCare Analysis

**01306 644886**

TruGreen (Epsom)

Michael Beecheno

The Cottage, Pilgrims Way, Westhumble

**Starting at just £20 per treatment**

A Service **MASTER** BRAND



**The Safe Pair of hands**

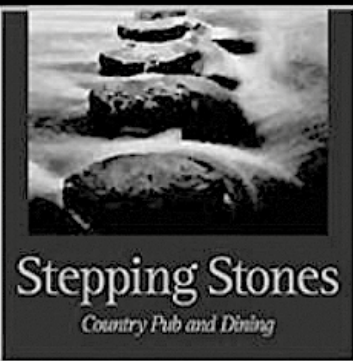
**Tax • Accounts • Probate  
Inheritance Tax & Executorship**

For advice, please call us on: **01306 880880**

or email: [partners@bullimores.co.uk](mailto:partners@bullimores.co.uk)

[www.bullimores.co.uk](http://www.bullimores.co.uk)

Bullimores LLP licenced to carry on out the reserved legal activity of non-contentious probate in England & Wales by the ICAEW



**STEAK NIGHT  
EVERY TUESDAY  
TWO COURSE MEAL  
GLASS OF WINE  
£19**

**Food Served All Day – Free Wi-Fi**  
Walkers – Muddy Boots – Cyclists – Families and dogs  
All welcome

*Lovely function room available for  
meetings, family and business events*

Near Box Hill and Westhumble Station  
**01306 889932** [www.steppingstonesdorking.com](http://www.steppingstonesdorking.com)  
[steppingstonespub@gmail.com](mailto:steppingstonespub@gmail.com)



**Please see  
website  
for  
special  
events**

# Sherlock Funeral Service

*Sherlock Funeral Service is an  
Independent family owned business,  
established over 100 years*

- Private Service Chapel & Rest Rooms
- Home visits arranged if required
- Pre-Paid Funeral Plans available
- Free Parking

**Telephone: 01306 882266**

Trellis House, 190 South Street, Dorking RH4 2ES.

Email: [office@sherlockandsons.co.uk](mailto:office@sherlockandsons.co.uk)



**Funeral Directors & Monumental Masons**

# Mickleham Parish Magazine

**October  
2017**

## Mickleham Parish Magazine

A community magazine for Mickleham and Westhumble, published under the auspices of Mickleham PCC, with an independent editorial panel.

The magazine is published at the beginning of each month, except January and August.

**COPY DEADLINE  
FOR THE  
NOVEMBER 2017  
MAGAZINE  
Sunday  
8<sup>th</sup> October**

send to:

Sue Tatham  
St Anthony, Pilgrim's Way  
Westhumble  
Dorking RH5 6AW  
01306 882547  
[sue@thetathamss.co.uk](mailto:sue@thetathamss.co.uk)

Contributions in any form are welcome, as are good quality photographs. There is no charge for advertising local charity and community events. However, the editors reserve the right to shorten, omit or reformat articles submitted for publication, depending on space.



Printed by Bishops Printers,  
Portsmouth

Mickleham Rectory

Dear friends

It's Harvest Festival time again! I have mentioned before that for many of us this is something which passes us by without so much as a glance. We are so used to having whatever food we want on our table at whatever time of year. So much so that we easily forget the toil and effort that goes on throughout the world to make good quality food available to us.

Food in abundance for us – but not for everyone:

- 795 million people in the world have had their hope stolen by constant hunger
- One-third of all food produced is never eaten (surely we should hang our heads in shame when so many are hungry)
- The carbon footprint has contributed to a changing climate with resultant floods, droughts and unreliable rain leaving many of the world's poorest people struggling to feed themselves and their families

It need not be like this; it should not be like this.

And at one level there is a simple solution. In parts of Malawi, for example, Tearfund's partners have been training local communities in a programme called 'Foundation for Farming', a programme which teaches simple techniques to farm dry, barren land and make it flourish again. And the results have been amazing for in many cases the training has increased the harvest ten-fold.

And it does not cost very much to train people. A gift of £30 will provide three families with such training – training which will enable them to grow enough food and so provide a healthy surplus to build a future on.

At the end of our Harvest Family Service we will have a retiring collection for this programme. In all probability most of you reading this will not be there, but here is a challenge: Why not, on 1st October when you are enjoying your Sunday roast, make a donation to the programme? Gifts can be left at the Rectory (marked "Malawi") and will be added to the church collection.

We cannot change the world overnight, but in small ways like this we can play a very modest part in giving a few people hope for the future – hope which at the moment they do not have.

With best wishes

*Malcolm*

Malcolm, our Parish Priest, is more than happy to visit people in the parish (with or without church links) to discuss pastoral and/or spiritual matters. He is also happy to offer home communion to those not able to attend church on a regular basis. Just contact him.



## JOIN US FOR BREAKFAST

### THE RUNNING HORSES

9 – 10 A.M.

Please book by the Tuesday before

## MEN'S BREAKFASTS

THIRD SATURDAYS

21<sup>ST</sup> OCTOBER

Book with: Andy Diamond  
diamo1@hotmail.co.uk

## WOMEN'S BREAKFASTS

FOURTH SATURDAYS

28<sup>TH</sup> OCTOBER

Book with: Stephanie Randall  
0773 6933 482  
srandall55@gmail.com



FOURTH MONDAYS

Monday

23rd October

Host: Sue Tatham

St Anthony

Pilgrims Way

Westhumble RH5 6AW

01306 882547

ALL WELCOME  
TRANSPORT AVAILABLE

2018 Village Fête  
Your chance to  
take part  
See page 17.

Non-church goers are  
very welcome to join  
the men's and women's  
breakfasts, Tea@3 and the  
Harvest Supper.

## Malcolm Raby to retire (again)

We were very sorry to hear that Malcolm Raby has decided to retire in November. He came to Mickleham in June 2013 as a house-for-duty priest after retiring from his full-time post as vicar of the rural parish of Over and Longstanton in the Ely Diocese.

'House for Duty' is an arrangement whereby a priest can live in a Parsonage House in exchange for carrying out certain duties in a parish, but without receiving a stipend. This suited Malcolm

very well as he did not feel ready to give up his work completely. And it suited us well as he and Sue soon became valued members of our community.

But this time retirement means retirement. Rather than returning to his native Yorkshire, Malcolm and Sue are planning to move to Epsom, to be near their two children and their families. We shall miss them both and are hoping we can entice them back to continue their very excellent quiz nights.

Sue Tatham



## Introducing Church House, Guildford

Plans are being finalised to bring together all Guildford Diocese's administrative departments and teams under one roof by Christmas 2017. The largest current site, Diocesan House in Quarry Street which needs significant and expensive refurbishment and cannot accommodate everyone is to be sold and the Education Centre offices on Stag Hill will be leased out.

New premises, to be called Church House, Guildford have been leased from the University of Surrey. Located in the Surrey Research Park, the self-contained building has plenty of office, meeting

and breakout space and excellent facilities.

The Bishop of Guildford, Andrew Watson, said: 'I'm delighted that we've finally managed to secure such excellent office accommodation, bringing together the different central teams under one roof for the first time. Transforming Church, Transforming Lives has given huge impetus for us to work more effectively together in support of our parishes, schools and chaplaincies – and the new accommodation will allow us to do just that.'

## A Concert for Remembrance Sunday

See page 9 for details



## Got your shoebox? Operation Christmas Child

We are once more collecting shoeboxes filled with appropriate goods to brighten the lives of children living in countries where such presents would otherwise never be received. Your simple act of generosity gives hope to children caught in the midst of wars, natural disasters and extreme poverty and shows them they are not forgotten.

Leaflets available at the church and St Michael's School. If you are unable to fill a shoebox but would like to support the work of the charity, the leaflet contains an envelope in which donations can be placed.

**Filled boxes should be returned to the church or the Rectory by  
Sunday 5th November**

## Diocese of Cyprus and the Gulf Migrant Workers and Refugees

*Extract from a short talk given on  
Sunday 16th July at a service in St.  
Michael's Church*

The Diocese of Cyprus and the Gulf has churches in Cyprus, Iraq, Bahrain, Kuwait, the United Arab Emirates, Qatar, Oman and Yemen. Congregations in the Gulf are predominantly migrants. There are close to 20 million working and living in the Gulf primarily from India, Pakistan and the Philippines and almost all Christian. In most of the Gulf states the Diocese has permission to build churches and is host to many protestant congregations. The numbers are staggering. 25,000 attend services at Holy Trinity Dubai each weekend, at the Anglican Centre in Doha maybe 15,000 and a new church being built off the main island of Abu Dhabi will be even larger.

Many poorer expatriate workers are in the Gulf without their families and housed in labour camps. In Qatar construction workers building football stadiums and in Dubai those who built the Palm live a harsh life with limited freedoms but are willing to endure it to remit money home. Two priests spend all their time in the labour camps of Sharjah and Dubai. Drive along Sheikh Zayed Road in Dubai everything towards the sea is the glitz that is Dubai. Turn inland to the desert and you find the camps. Two worlds inextricably entwined both needing the other but materially a million miles apart.

In other parts of the Diocese there are refugees mainly Iraqis forcibly displaced

by war and who have moved either within Iraq or outside but not from choice. These are not migrants as in Dubai but refugees from war. Those who have left Iraq have moved primarily to Jordan together with maybe 2 million from Syria. The majority want to go back to their homes and they wait in camps within their country or next door. Only a minority travel further and some end up attempting to enter Europe.

And some of those refugees are in a small camp in Cyprus. For those trying to escape war and hunger this is not an ideal place. Cyprus may be a member of the EU but it is an island 500 miles from the EU mainland and a country where the bureaucracy grinds slowly and political asylum has a special meaning. Asylum is granted for a particular job and those on offer to refugees are the menial activities with little salary and no possibility of change or improvement. So refugees wait for a move to Greece or Italy but that happens slowly if at all. Some view refugees as a threat to European society and others argue their need is not as immediate as those in the war zones but nevertheless these are people trying to find a way to a decent life and in this case are stuck in a camp on the island of Cyprus. This may not be a case of extreme physical hardship but the emotional stress can be great.

A friend of mine Rev'd Christine Goldsmith is a member of Christians Together in Cyprus which provides support for the refugees and in an email a few months ago she wrote the following.

'There are 311 asylum seekers in Kofinou camp near Larnaca from 15 countries including Syria, Palestine, Iraq, Iran, Congo, Cameroon and Lebanon. There are 89 children ranging from a few months to 18 years. Ten babies have been born in the camp. Conditions are basic but not unreasonable. People live in portacabins with power and water but the residents are not allowed to work and so there is little to do. Life is very limited with the added burden of an uncertain future.'

During school months the children attend the local Cypriot school returning for lessons in Arabic run by a Palestinian school teacher also resident in the camp. While the government takes reasonable care of the camp residents less immediate necessities such as reading glasses, shampoo, nappies and toys are slow in arriving if at all. The volunteers rely on donations to provide some of these small luxuries. It is all about showing people care.'

This is not a case of extreme hardship and deprivation and no one is being killed but nevertheless these are displaced people confined to life in a camp with an uncertain future and it is still a human tragedy. Christine Goldsmith, Christians Together In Cyprus and others are simply trying to show that people care and are demonstrating that care by offering assistance where they can and they rely on donations to help them do that.

John Banfield

Diocese of Cyprus and the Gulf



Pip Burley Presents

## The Golden Age of Song

*Celebrating the lives and work of the four greatest songwriters who ever lived*

Wednesday 22nd November Jerome Kern and Irving Berlin

Wednesday 31st January 2018 Cole Porter and George Gershwin

Parish Church Hall Leatherhead at 7.30 p.m. Tickets: £15 for each performance

*Pip Burley pays tribute to the lives, words and music of Jerome Kern, Irving Berlin, Cole Porter and George Gershwin - four men who defined popular music during the first half of the last century.*

Further details and tickets from Jackie Hampton at info@jackiehampton.com or 01372 376640



Superb professional  
cleaning of carpets,  
oriental rugs,  
upholstery, curtains  
and leather  
Guardsman  
anti-stain protection

- spot stain and odour removal
- leather cleaning specialists
- flame retarding
- dust mite reduction service
- all work fully insured & guaranteed

For a free, no obligation quotation, call today  
Freephone 0808 144 9071  
John Joannides, 28 Bracken Close, Bookham

**Safeclean**  
*The furnishing care specialists from GUARDSMAN*



*Pinehurst  
Rest Home*

*We aim to provide an excellent service at  
competitive rates, supporting emotional, physical  
and social needs of our clients, always respecting  
and protecting their status as adults.*

- Residential and 24-hour daycare
- Excellent *cuisine*
- Facilities for disabled: medic bath / lift
- Home doctor in attendance
- Single & sharing rooms
- Convalescent & short stays
- Lounge with TV & piano
- Separate dining room
- Physiotherapist, chiropodist & hairdresser
- Entertainment: theatre visits / parties  
& cabarets held on premises

**National Trust Road, Box Hill  
Mickleham, Dorking, Surrey RH5 6BY**  
Telephone: 01306 889942 / 888253

*Dorking Decorators*  
PROFESSIONAL PAINTERS & DECORATORS

**40 Years Experience**  
All aspects of painting and decorating

**01306 640418**

[www.dorkingdecorators.co.uk](http://www.dorkingdecorators.co.uk)

Approved by Trading Standards & Checkatrade



**CHRIS HULME**

*Garden Machinery*

*Service and repair of all makes and models of:*

- Ride-on mowers • Rotary mowers • Cylinder mowers
- Chainsaws • Strimmers • Hedge cutters
- Rotavators • Blower vacs

*Quality secondhand machinery*

*Collection and delivery service*

The Barn, Cowslip Lane, Mickleham 01372 377757 / 07950 961606



*Flowers  
by Elaine*

Local delivery Interflora Worldwide  
Weddings & Functions Special Occasions  
Fresh Flowers & Plants Varied Gift Selection  
Qualified Florists



- Bouquets • Arrangements • Hand-tied Wraps • Plants & Bulbs • Exotic Flowers
- Pots & Baskets • Planted Displays • Champagne • Wines & Spirits • Fresh Fruits
- Cute Teddies • China & Vases • Helium Balloons

01306 883511 fbe@btconnect.com 66 High Street, Dorking, Surrey RH4 1AY  
Order online at: [www.flowersbyelaine.co.uk](http://www.flowersbyelaine.co.uk)



**For all your decorating needs...**

Professional, friendly and speedy service at all times

Fully insured

Exterior painting

Free quotes & advice

Commercial/Domestic work

Insurance work

Interior decorating

Oil & Water-based products

Wallpaper hanging & removal

07947 135 376

0208 3978 962

[www.slhdecoratingservices.com](http://www.slhdecoratingservices.com)

## The Garden Shed Westhumble Open Gardens

Some lovely people were persuaded to open their gardens for our enjoyment on Saturday 9th September, the same time, but not part of, the Mole Valley Heritage weekend. They were rewarded by a turnout of at least 80 visitors.

I began my tour at South Intake, garden 5 (of 8), whose owner enthusiastically sold me his last brochure which included the all-important map. Stephen and Joyce's garden was a beautiful example of sheer determined hard work especially to have colour in the garden at this time of year. Joyce told me that much of the colour came from annuals that she had diligently grown from seed that season. I particularly noticed a tall, orange bloomer *Tithonia*, the Mexican sunflower and the yellow *Argyranthemum* 'Jamaica Primrose' marguerite.

Faircross, next door, has a garden full of flowers and a productive vegetable plot with fruit cages. Diana, the owner, improved my garden knowledge by showing how blight can ruin a tomato crop within 24 hours! There was a very neat log pile from a recent tree removal, which had let a lot of light into the garden, although her usually delightful husband Robert was muttering about the damage this had done to his 'weedless' lawn.

Ash Tree Cottage is a work in progress for newish owners Katya and Vladimir (who I noticed disappear to see the other gardens). This is a combined cottage and organic kitchen garden, with geometric shapes and new planting around a patio extension. There will be another chance to meet Katya as she is giving a talk on Soil Science to the Garden Shed group in October. See page 9.

Across the road was Highfield House, home of Wendy and Barry, a well established garden with large herbaceous border, resplendent with grasses and perennials. They have lived here for 36 years so there have been a few changes over that time. In the nine years Liz and John have lived at Chapel Farm, there have been many improvements around the original rose garden and flint wall.



Jennifer reigns as the Composting Queen at her garden, Westhumble Place. Recently she held two composting seminars as part of the Garden Shed programme. It is a large plot and varied with fruit trees, vegetable area and large lawns. It was at this point on my tour that an ominous black cloud shaded an otherwise beautiful, sunny afternoon so I high-tailed it up to Pauline and Roger's garden at the end of Crabtree Lane. This garden is well designed with flower borders and raised vegetable beds in a fairly small plot. The view across the valley, making it seem much larger, is spectacular, as was the array of cakes, so it was very enjoyable to chat with the large number of visitors who had gathered there, albeit standing in the rain.

There was one garden that I was advised not to miss, that of Viv and David at Ashcombe and it was very kind of them to let me wander around well after

closing time. I have to say they win the prize for colour with a tremendous display of dahlias. Viv tells me she lifts them all each year and is planning to put in yet another bed. The work involved shows dedication!

Stephanie Randall

Photographs: Stephanie Randall



## Mickleham & Westhumble Local History Group

# Occupations in Mickleham 1914 –1934

In the Vestry, there is a book bound in white with gold tooled lettering on the cover announcing that it belongs to St. Michael's Church, Mickleham. This is followed by the Royal Court of Arms, and then 'Register of Baptisms'. It has brass clasps which close it and lovely marbled paper on the inside covers that is common in late 19th and early 20th century books. The label inside announces that the book is made by Shaw & Sons, Poor Law Printers and Law Stationers based in Fetter Lane. It is numbered 14491 and dated 1913. A volume with a pedigree.

Page 1 is headed 'BAPTISMS solemnised in the Parish of Mickleham in the County of Surrey in the Year One thousand nine hundred and thirteen. 'Mickleham' 'Surrey' and 'thirteen' are all completed by the then Rector, W.R. Lloyd, whose handwriting is large and angular and whose spelling is a little insecure. The first entry records the baptism on November 16th 1912, of Nigel Frank, son of Albert Thomas and Teresa Martha Clifton, and goes on to record the date of baptism, when the child was born, his given Christian names, parents' names and surname, abode and then Quality, Trade or Profession. In this case, Albert was a telegraphist. Finally, comes the signature of the Rector, 'by whom the Ceremony was performed'. The book finishes on December 22nd 1974 when John Cornell was Rector.

This is a book that can tell us so much. As well as names, dates and addresses we have the occupations of all those who had their children baptised during this time. All of these categories would repay many kinds of study but here I have limited myself to 20 years and the occupations recorded as it is this period, I think, that demonstrates most clearly the changes and the social differences that were at the heart of village life.



Gardeners lead the

list of occupations, numbering thirty in all. In the early years which we are covering this is by far the greatest area of employment for villagers. These are all married couples as one would expect. To add bachelor gardeners would I am sure vastly increase the numbers. The addresses do not of course tell us who these gardeners worked for but they lived in the cottages, such as Chalkpit and Elm Cottages in the village and were employed locally by the big estates, such as Mickleham Downs and Norbury Park, as well as by the Mickleham gentry with large houses and gardens.

It is interesting to be able to chart the gradual rise of the motor car. Only three grooms and one coachman are recorded over this period but there are eight chauffeurs, clearly a rising trend. Often the coachman had to switch from horses to motor cars, quite a different beast. His role, for example, had always been to hold the horses' heads while a footman would be responsible for opening the carriage doors, letting down the step and escorting the ladies. With the introduction of the motor car, it is recorded that however absurd it may seem the chauffeur often remained in the car (metaphorically holding the horses) while it was the job of the footman to open the car doors.

Many occupations are linked to the land and farming. Ten cowmen, one stockman and one dairyman are recorded plus nine milkmen. There was a dairy herd at Mickleham Hall Farm, and a much bigger one at Norbury Park Farm. Swanworth (called the Stud Farm in Leopold Saloman's time where he famously bred shire horses) became a dairy farm probably during the 1920s. Certainly milking took place at Cowslip Farm during WW2, if not earlier, and milk was bottled on site. Six agricultural labourers, and six carters are listed as well as one farmer and one bailiff. Both of the latter would be employed, probably by the owners of large estates, and would have been in what we would now call managerial positions. Two gamekeepers and one forester show us that the traditional sports of the landed gentry were still in evidence. Keeper's Cottages are still so

named in Norbury Park, there is another on Box Hill, and the census records list a succession of gamekeepers who lived in Lodge Farm (then two cottages). The 19th century OS maps show an aviary in the garden; the remains of a brick building (with stove) for the rearing of pheasants, and an outside area that must once have been cages still exist. The floor of the outside area is covered by terracotta tiles.

Other manual jobs are related to the railway, such as a platelayer, one who was responsible for the maintenance of track, and a signalman who might have manned and lived at the Mickleham Crossing. Railway Cottages were tied cottages built next to the level crossing and the signalman was responsible for opening and closing the gates and operating the signals at the entrance to the tunnel. There was an unsuccessful move by villagers in the thirties to create a Halt here, so that Mickleham folk might avoid the daily journey to Westhumble. To this day, trains sound their imminent arrival at its entrance but the crossing box was demolished in the 1970s and the gates closed for the last time. Only one blacksmith, an important member of the community, is recorded during this time, at the forge on the site of the current Frascati.

Mickleham was also noted for a number of building families, such as the six Batchelor brothers (there were two sisters as well and child number seven was named Septimus) who lived in various village houses, in particular 'Mon Repose' which they built, and ran their business from Batchelors' Yard at the top of School Lane. The Child family who arrived in Mickleham in the mid-19th century are another success story. William Child rose from arriving as a lodger/carpenter to owning houses and running a highly successful timber yard and building business. Similarly, the Bravery family also ran the Timber Yard in the London Road. These entrepreneurs worked and prospered, employing brickmakers, carpenters and painters.

Then there is what I think of as the middle ground, or white collar workers,

*continued >>>*

## Jesus Christ Superstar

### Regent's Park Open Air Theatre

The oldies among us, who probably represent quite a high proportion of readers of this magazine, will remember the furore when the Andrew Lloyd Webber/Tim Rice musical *Jesus Christ Superstar* came out in 1969. No one actually proposed that Rice should be burned at the stake for suggesting that Jesus was merely a superstar and not the Messiah, but some commentators got close. The show achieved the double accolade of being banned both in apartheid South Africa (for being 'irreligious') and communist Hungary (for being 'religious'). Time appears to have healed the wounds, and this genuine rock opera (all the music is rock'n'roll and there is virtually no dialogue) has now taken its rightful place in the musical theatre back catalogue. There is an awesome new production of *Superstar* at the Open Air Theatre in Regent's Park. Sadly by the time this article appears the run will be nearly over, but no doubt it will reappear somewhere soon at a theatre near you. The main criticism levelled at the show in 1969 was that it does not show the Resurrection, although some

productions did add this in to mollify the Bible bashers. What most people did not realise back in the day is that it is actually not a play about Jesus at all, but about Judas Iscariot. Judas starts and finishes the show, has most of the best songs including the title track, and is convincingly portrayed as the Jewish nationalist not understanding why Jesus prefers to die rather than to foment revolution. Expect a thumping rock'n'roll score, quite raw in parts but beautifully played by the house band dressed, like everyone else, in shades of grey (there are probably about 50 of them in all, but that's a bit of a red herring). I much prefer Lloyd Webber's earlier rock'n'roll musicals like this one to his later, more syrupy work. The exception to that rule is *School of Rock*, which is still on, and if you want a disengage-brain-feel-good evening with some excellent rock'n'roll thrown in, that is definitely worth a visit.

*Jesus Christ Superstar* however is, as you would expect, a deadly serious story, with only occasional flashes of humour. Most of the principals act, sing and dance well, with stand-out performances from

Tyrone Huntley as Judas and David Thaxton as Pilate. I thought Maimuna Memon as Mary Magdalene was a bit weak but my better half disagreed, and she is a musician. Jesus, a difficult part, was well coped with by Declan Bennett. Phillip Brown and Sean Kingsley were suitably conniving as Caiaphas and Annas. And of course Herod's wonderfully camp song, that does not really fit within the show but always stops it, delivered with aplomb in a massive silver wedding dress by Peter Caulfield.

Annie and I have now had the pleasure and privilege of seeing two excellent productions about Holy Week in the last few years, the other one being the Oberammergau passion play. Completely different evenings, but each moving and effective in its way. Catch them both if you can. Book now for Oberammergau in 2020!

Will Dennis

## Occupations continued

>>> for example storeman, licensed victualler, publican, police constable (living in the village at the police house), butler, chef, garage proprietor, electrician, grocer, waiter – the variety is huge. One such waiter was Jesse Fuller, who worked for many years at the Burford Bridge Hotel, although on another occasion he styles himself Club Steward. Jesse was the father of Bill Fuller, waiter at the Running Horses for many years. Both attended Mickleham School and lived in the village all their lives.

Moving up the social scale, we have those in positions of recognised authority in the community such as the rector, the doctor and the headteacher. Four residents describe themselves as 'gentlemen' while three put down 'independent'. Is this a quality, trade or profession, I wonder? However, the professions are well represented with an architect, civil servant, solicitor, various kinds of engineer, merchant, barrister, member of the Stock Exchange, the

armed services, to name just some. So Mickleham was a very mixed, one might say divided, community between those who lived and worked in the village on the one hand and on the other those whose occupations involved travel to work and wider horizons.

Most interesting: what were a pearl merchant and a wharfinger\* doing in land-locked Mickleham?

(Some notable families, eg the Roses of Roses' Stores are not mentioned as they are not recorded in this book, the youngest Rose being born in 1901).

Judy Kinloch

*\*The wharfinger takes custody of and is responsible for goods delivered to the wharf, typically has an office on the wharf or dock, and is responsible for day-to-day activities including slipways, keeping tide tables and resolving disputes. The term is obsolescent; today a wharfinger is usually called a 'harbourmaster'. Wikipedia.*



## ANNUAL EXHIBITION

### Denbies Wine Estate

Friday 13th to  
Saturday 14th October  
10 a.m. – 5.15 p.m.  
Sunday 15th October  
10 a.m. – 4 p.m.

ADMISSION FREE

The DGA meets on Tuesday afternoons at Beare Green Village Hall from September through to Easter. Membership is open to artists of all abilities, from beginner to professional and costs just £20 per calendar year. The activities programme is varied and includes workshops and demonstrations. (Outdoor painting and sketching during the summer months).

For more information contact  
Jane Anderson Wood: 01372 375123  
j.andersonwood@gmail.com

## ASHTEAD PARK LANE FINE ARTS

RESTORATIONS - PICTURE CLEANERS - FRAMERS

ART GALLERY

Many originals and prints for sale

Open 9.30 am to 5 pm Monday to Saturday  
or call for appointment

102 The Street, Ashted KT21 2AW  
01372 277284 or 07940 677932  
lorna@parklanefinearts.co.uk

## EDE BROS

REMOVALS · STORAGE · SHIPPING

- Since 1926, Capel-based and family owned
- STRESS-FREE, local, national & worldwide
- Contact us for your **FREE** estimate...

**01306 711293**  
edebros.co.uk



**We provide the best  
possible care for your feet**

**Book your appointment:  
01372 454583**



**Bookham**

**Chiropody & Podiatry Clinic**

Diagnosis, Expert Treatment & Professional Care  
for Your Feet

**29 High Street, Great Bookham KT23 4AA**  
www.bookhamchiropody-podiatry.co.uk

## Betchworth Electrical Contractors Ltd.

Tel: 01737 843079

Mob: 07966 239644

- Additional Lights and Sockets
- Complete Rewiring
- Garden Lighting and Power
- Electrical Installation Condition Reports
- Specialists in Fault Finding
- Telephone & Computer Cabling
- Central Heating Controls
- Smoke Alarms to BS5839:Pt6



All work is in compliance with  
BS7671:2008 Amendment 3



Gill and Paula would like to warmly welcome you to Aspen Care, offering assistance to enable you to live in the comfort of your own home with care and companionship.

- A happy alternative to a care home
- Cover while your family or carer takes a holiday
- Recuperation and rehabilitation following a hospital stay
- All aspects of personal care, medication and meal prep
- Dementia care, disability, chronic & critical conditions, end of life care
- Accompaniment to appointments

Call for a chat to discuss your requirements.

We look forward to hearing from you.

01737 354821 info@aspenliveincare.co.uk www.aspenliveincare.co.uk

## ALFA CHIMNEY SWEEPS

- Clean prompt work
- 30 years' experience
- Specialist advice for old/problem chimneys
- Weekday and weekend service
- Fully insured

**01306 883455**



## YOUR LOCAL FARM SHOP ON DENBIES WINE ESTATE

**farm shop deli plant centre**  
**FREE PARKING** www.vgfarmshop.com **01306 880720**

Open 7 days 9.30 a.m. to 5.30 p.m.

- Fresh fruit & veg – local & home grown
- Great range of local cheese
- Fresh bread, cakes, croissants & pastries
- Cook ready meals; Bangers Galore sausages

APPLE DAY : SATURDAY 28TH OCTOBER

Apple pressing with Dorking Community Orchard

Apple identification and other activities



MICKLEHAM CHORAL SOCIETY

PRESENTS

## A CONCERT FOR REMEMBRANCE SUNDAY

12TH NOVEMBER – 7 P.M.

ST MICHAEL'S CHURCH

*The varied programme includes excerpts from Elgar's The Kingdom and other short choral numbers and vocal and instrumental solos*

Tickets: £10

(£5 for children under 14)

Available from Anne Weaver

01306 883932

weaver\_anne@hotmail.com



## Garden Shed Events

Join us on our tour of

**RHS Gardens, Wisley**

Thursday 5th October at 10 a.m.

Private Tour of the garden – £14 per person

Transport not provided, suggest we share lifts where possible. Lunch is available in restaurant after the tour, you are then free to continue exploring the gardens

\*\*\*\*\*

## Soil Scientific

A talk by Katya Dubrovskaya

Friday 20th October at 7.30pm

in the The Stepping Stones Pub, Westhumble

This will also be a sharing session. Simply bring along any spare plants, seeds, seedlings and cuttings, if you have any and you can swap them.

Tickets are £5 in advance available from Pauline or Susie or £6 at the door

Coming up:

Tuesday 7th November - Sharing Meeting followed by Speaker – John Clachan with a talk on *Improving Your Flower Beds and Borders*. To be held at The Stepping Stones Pub Westhumble Cost £5 in advance and £6 at the door.

Saturday 2nd December - Christmas Decoration Workshop with Coffee, Tea and Mince Pies in Mickleham Village Hall

If you are interested in any of these events please contact to book or for more information

Pauline Davis 07759 646353 or paulinemdavis@gmail.com or  
Susie Gowenlock 07768 923088 or susiegowenlock@gmail.com

## How to protect yourself from identity crimes

- Limit the amount of personal information you give away on social networking sites Your real friends know where you live and know your birthday.
- Update your computers firewall anti-virus and anti-spyware programmes. Up to 80% of cyber-threats can be removed by doing this
- Never share passwords or PINs (personal identification numbers) with others and do not write them down.
- Use strong passwords and PINs - don't use your date of birth or your child's name, include a mix of upper and lower-case letters, numbers and punctuation marks. Aim for a minimum of 10 characters in a password.
- Do not use the same password or PIN for more than one account.
- Shred all your financial documents before you throw them away.



## Autumn Exhibition

Old Chapel at St. John's  
School, Epsom Road,  
Leatherhead, KT22 8SP

Saturday 21st October to  
Sunday 29th October inclusive  
open daily 10 a.m. to 4 p.m.

*Featuring a varied selection of members' paintings in a wide range of subjects, both traditional and contemporary in style. All will be for sale, together with a wide selection of greetings cards.*



# Sparks & Shooting Stars at Westhumble's Annual Bonfire and Fireworks Display Saturday 4th November

Please come to the annual Bonfire and Fireworks Display in Westhumble Field, as usual, at the bottom of Adlers Lane. All from Mickleham and Westhumble and St Michael's School are most welcome, along with all your relatives and friends.

We are keeping to £5 per head (or more if you feel generous) and we would ask groups please to base their donations on this to ensure the continuation of this event. Bring as many spectators as possible – we need lots of people to blow at the bonfire to make sure it burns well this year!

So have your hats and woollies, scarves and wellies by the door and come whatever the weather.

Please remember that, as last year, our lower insurance premium means that hand-held fireworks are not covered, so PLEASE DO NOT BRING SPARKLERS – we have an alternative.

Bonfire building begins on Saturday 14th October and continues as below.

We were delighted to see some new faces to help build the bonfire last year, but a few more pairs of hands would not go amiss, as some of the usual suspects are getting long in the tooth! Even if you

can only spare a short time everyone is very welcome, including children, but do remember that a bonfire can be dangerous, even before it is lit, so please keep small children and pets under supervision.

As usual, refreshments will be provided for bonfire builders.

On 4th November Guy Fawkes will lead the Torchlight Procession from the junction of Burney Road, Chapel Lane & Adlers Lane at 5.45 p.m.

Soup and sausages will be available from the barbecue in the field for a small donation. The Pop-up-Pub will also make an appearance.

If you have bonfire material (no rubbish, please) leave it near the bonfire site BUT



NOT BEFORE 14th OCTOBER, as there may be cattle in the field until then. NO GREEN YEW, SCREWS or NAILS, please: they can be dangerous to animals.

Unfortunately we have only very limited ability to collect material from around the village.

Neil Mason, Entertainments Secretary  
01306 889073

## Bonfire Building

|                                            |                                                              |
|--------------------------------------------|--------------------------------------------------------------|
| Saturday 14th October                      | morning from 10 a.m.                                         |
| Sunday 15th October                        | afternoon from 2 p.m.                                        |
| Saturday 21st October                      | morning from 10 a.m.                                         |
| Sunday 22nd October                        | afternoon from 2 p.m.                                        |
| Saturday 28th & Sunday 29th October        | only if rain has disrupted earlier efforts: look for notices |
| Finishing touches<br>Saturday 4th November | morning from 10 a.m.                                         |



Many of us will be out walking with our dogs this month as we appreciate the autumn colour. So the National Farmers Union is reminding us to take extra care and avoid situations where our pets could scare and even harm farm animals, especially sheep.

Sadly, there has been a spate of attacks by dogs on sheep across Surrey this year. Sheep can die the most terrible deaths in dog attacks. Female sheep (ewes) will be becoming pregnant this autumn and can lose their lambs when chased by dogs.

Dorking NFU branch chairman Hugh Broom, from Sondes Place Farm, says: 'Please avoid potential problems and keep your dog under close control and on a lead around cattle and sheep. Do not be tempted to let your pet run freely in open fields as there may be sheep around the corner - even the best behaved dogs have a chase instinct. Dogs can inflict the most terrible injuries on sheep which often result in death'.

If a dog chases and/or bites livestock, the dog owner or the person

## Dog walking plea

responsible for the animal at the time is guilty of an offence (of livestock worrying) under the Dogs (Protection of Livestock) Act 1953, and may be sued for compensation by the farmer. Mr Broom adds: 'The law allows farmers to shoot dogs that are threatening livestock. Do not put your pet in danger, keep it on a lead and under control at all times. Dog attacks on sheep should be avoided at all costs.'

Owners should also check that properties are dog proof, to prevent dogs roaming freely.



As the shades lengthen, and the leaves fall, we head into that time of year which, like the football season seems to grow longer each year, this year extending from September to June. I refer of course to those musical soirées whereby my spouse, and others', disappear on Thursday evenings to the Mickleham Choral Society, on Tuesday evenings to the Dorking Chamber Orchestra, and often other nights as well.

Spouses like me do not actually object to choral or chamber music in its place



## Leith Hill Place

The first leaves are already beginning to turn and it is now officially Autumn. At Leith Hill Place we will be remembering the Great Storm of October 1987, which tore down trees across the hill, leaving great Scots pines and beech trees broken like matchwood and some local houses without access or electricity for days. The Leith Hill rangers have put together an exhibition of photographs of the devastation, as well as collecting stories from local people thirty years on. The exhibition will be shown in the Drawing Room at Leith Hill Place from 6th October until the end of the month. Entry to the exhibition is free but normal admission charges apply for non members.

On Saturday 21st October come and hear Leith Hill Timeline Choir bring the Surrey Hills alive with the sound of folk music. Taking inspiration from Ralph Vaughan Williams' devotion to traditional music, the choir weave together songs collected by the composer in Sussex and Surrey with other folk music from the South East. In between the songs the choir share stories about the colourful local characters they were collected from, as well as some of Vaughan Williams' personal thoughts as he wrote them

(about once a year, like church), but much prefer, given the choice, kick-ass rock'n'roll. We are left disconsolately contemplating gloomy lonely evenings in front of the fire and TV. Of course there are some upsides. We can choose the TV channel we want without the usual struggle session, and we can have a second (and third and fourth) beer without the eyes narrowing on the other side of the room. But there do seem to be an awful lot of rehearsals, and I guess I am not the only one who suspects that the Mickleham Choral Society is as much a social club as a genuine choir. Indeed one recently-married couple did their wooing there, lending a new meaning to the expression 'Would you like to see my sheet music'.

To this end I am asking readers of this magazine if anybody would like to contemplate forming a Mickleham Alternative Music Society. This would meet on Thursday evenings at the Runners and/or the King Willy to discuss life in general, with a particular emphasis on rock music. Trips could be arranged to rock concerts (mainly, given our demographic, geriatric ones such as the Stones), karaoke clubs and even the Elvis impersonator at the Fetcham Tandoori (who is not too bad after a vindaloo and about eight pints of Cobra). The sky is the limit. To all those MAMS out there, let us organise and defeat classical music totalitarianism. Revolution! (that's side 4, track 1 from the White Album of course).

Will Dennis

## Leith Hill Musical Festival

### Come & Sing Mozart's Requiem

with Jonathan Willcocks  
Dorking Halls

Saturday 14th October  
10.30 a.m. - 4.30 p.m.

registration from 10 a.m.

Music will be available on the day, as will tea and coffee. These are included in the price of: £21.75 adults / £11.20 aged 18 & under.

Tickets are available now and may only be purchased online from Eventbrite, see LHMF website for link

down. If you would like to have a go at singing folksong, please come along to a workshop led by Stef Conner and the Timeline Choir from 2 to 3 p.m. Tickets for the workshop cost £10 and there are limited numbers so please book early. The Timeline Choir concert will take place 4.30 to 5.30 p.m. Tickets for the concert cost £12 and are also likely to be popular.

On Tuesday 24th October, 'Into the Wild' invites our younger visitors (up to 10 years) to a Spooky Fun day, with storytelling, crafting and a workshop with a children's author. Tickets are from £12.50 and the morning and afternoon sessions are split by age ranges, so please check the website for details. Finally, from Friday 27th to Sunday 29th October, children are welcome to our Spooky House Trail. All children in fancy dress will be given free entry and there will be tasty Halloween treats on sale in the kitchen.

Sunday 29th October will be our final open day of the season and the last chance to see our antique Wedgwood ceramics exhibition. Tickets for all events can be booked on 0344 249 1895. For more information please go to our website: [www.nationaltrust.org.uk/leith-hill-place](http://www.nationaltrust.org.uk/leith-hill-place).





### Counselling Reiki / Reiki Courses Mind & Body Healing Shamanic Journeying Munay-Ki Rites

*'Wow, it's amazing! I feel so much calmer within myself and also emotionally too, which is really good. I feel so different.'*

For further details please call Judith Cobby on  
01306 882229 / 07790 614448  
or visit [www.healing-inspiration.co.uk](http://www.healing-inspiration.co.uk)



### NJB DOMESTIC CLEANERS

*come home to a clean home*  
Mother and son business  
Fully insured

Weekly or fortnightly cleans  
One-off spring cleans  
End of tenancy cleans  
Shops, offices and communal areas

[ncbdomes@aol.co.uk](mailto:ncbdomes@aol.co.uk)

Please ring Nick: 07717 763 380  
or Chris: 07780 670491

### Ballroom Dancing Latin American Dancing Professional Training [IDTA]

Private Lessons only  
Sunday, Monday & Wednesday  
Evenings 6 - 10 p.m.

At Mickleham Village Hall  
Dell Close, Mickleham, Surrey RH5 6EE  
07901 742 887  
[vmvdancing@gmail.com](mailto:vmvdancing@gmail.com)



IDTA Qualified Teacher

### STEVE & TIM LANGLEY

*Experienced craftsmen*

ANTIQUE RESTORATION  
CABINET MAKING  
FRENCH POLISHING

Free estimates, collection & delivery  
01372 457700  
07960 486455 07847 769517

### Rowlatt Garden Services

# RGS

EST.1985

**Gardens large and small  
we maintain them all**

All aspects of private and commercial garden  
and estate maintenance, landscaping undertaken  
Fencing, grass & hedge cutting

Telephone: 01737 844373 Mobile: 07887 838666  
References available upon request

### Road and Competition Engineering Ltd

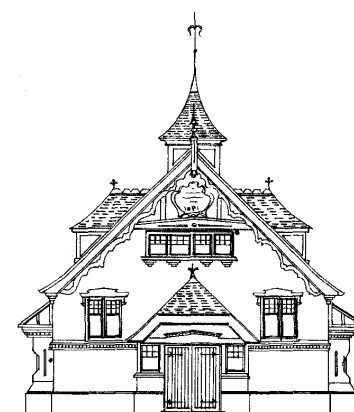


Specialists in the  
maintenance and  
restoration of  
historic road and  
race cars

From general servicing, performance  
modifications, engine/gearbox rebuilds  
to full restorations. We also offer vehicle  
storage. Our workshop is based in Charlwood



Jamie Mason 07840 698452 [www.racelt.com](http://www.racelt.com)



### Mickleham Village Hall available for hire

Hall bookings  
Table & chair hire

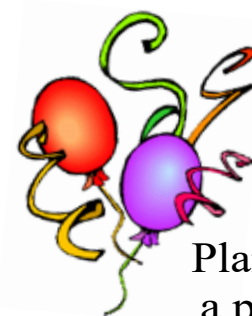
Deanna Darnell

01372 388474

07790 941 601

[d\\_darnell\\_MVH@hotmail.co.uk](mailto:d_darnell_MVH@hotmail.co.uk)

[www.surreycommunity.info/  
micklehamvillagehall](http://www.surreycommunity.info/micklehamvillagehall)



Planning  
a party?

Equipment  
available for hire

China ~ Cutlery

Electric urn

Equipment hire

Mary Banfield

01372 373912

[mgbbmw@aol.com](mailto:mgbbmw@aol.com)

## Community Directory

Box Hill (National Trust)

Head Ranger – Mark Dawson

01306 885502

[mark.dawson@nationaltrust.org.uk](mailto:mark.dawson@nationaltrust.org.uk)

Friends of Box Hill – Chair Mrs Lyn Richards

01737 842889

[lyn@mra.uk.net](mailto:lyn@mra.uk.net)

Box Hill School

Headmaster – Cory Lowde

01372 374814

[hmsec@boxhillschool.com](mailto:hmsec@boxhillschool.com)

DORKING CRICKET CLUB

Chairman – David Spackman

07831 859232

[david@theimagecompany.co.uk](mailto:david@theimagecompany.co.uk)

DORKING GROUP OF ARTISTS

Exhibition Secretary – Patricia Booth

01737 24491

[patriciabooth100@gmail.com](mailto:patriciabooth100@gmail.com)

DORKING LAWN TENNIS & SQUASH CLUB

Jim Cattermole

01306 883629

[jim.cattermole@uwclub.net](mailto:jim.cattermole@uwclub.net)

DORKING RUGBY CLUB

Jim Evans

07789176417

[jim@flintcottage.net](mailto:jim@flintcottage.net)

THE GARDEN SHED

Pauline Davis

07759 646 353

[paulinemdavis@gmail.com](mailto:paulinemdavis@gmail.com)

Susie Gowenlock

07768 923 088

[susiegowenlock@gmail.com](mailto:susiegowenlock@gmail.com)

JUNIPER HALL FIELD CENTRE

01306 734501

[enquiries.jh@field-studies-council.org](mailto:enquiries.jh@field-studies-council.org)

Head of Centre – Simon Ward

[Simon.lr@field-studies-council.org](mailto:Simon.lr@field-studies-council.org)

Friends of Juniper Hall – Mrs Suzy Hughes

01372 275393

[suzyhughes@businessetiquetteint.com](mailto:suzyhughes@businessetiquetteint.com)

MICKLEHAM CHILDREN'S PLAYGROUND ASSOCIATION

Secretary – Mrs Sarah Parfitt

07767 891772

[sarah@sarahparfitt.com](mailto:sarah@sarahparfitt.com)

MICKLEHAM CHORAL SOCIETY

THURSDAYS 8 - 10 P.M. – MICKLEHAM VILLAGE HALL

Conductor – Miss Juliet Hornby

01372 373106

Secretary – Mrs Anne Weaver

01306 883932

[www.micklehamchoral.org.uk](http://www.micklehamchoral.org.uk)

[weaver\\_anne@hotmail.com](mailto:weaver_anne@hotmail.com)

MICKLEHAM OLD BOX HILLIANS FOOTBALL CLUB

Secretary – John Atewell

01372 374745

MICKLEHAM PARISH COUNCIL

SEE WEBSITE FOR MEETING DATES [www.micklehampc.org.uk](http://www.micklehampc.org.uk)

Chairman – Rev'd David Ireland

01372 379381

[rev.ireland43@btinternet.com](mailto:rev.ireland43@btinternet.com)

Parish Clerk – Trevor Haylett

[trevor.haylett9@gmail.com](mailto:trevor.haylett9@gmail.com)

MICKLEHAM PARISH MAGAZINE

Editor – Mrs Sue Tatham

01306 882547

[sue@thetatham.co.uk](mailto:sue@thetatham.co.uk)

Deputy Editor – Charlotte Daruwalla

01306 884025

[chardaruwalla@tiscali.co.uk](mailto:chardaruwalla@tiscali.co.uk)

MICKLEHAM VILLAGE HALL

Chairman – Ben Tatham

01306 882547

[ben@thetatham.co.uk](mailto:ben@thetatham.co.uk)

Bookings Manager – Mrs Deanna Darnell

01372 388474

07790 941601

[d\\_darnell\\_MVH@hotmail.co.uk](mailto:d_darnell_MVH@hotmail.co.uk)

*Continued on page 16.*

### In Pain? We Can Help

### Dorking Chiropractic Clinic

Dr Graham M Allen & Associates

- Back Pain and Sciatica
- Hip, Knee, Foot and Ankle Pain
- Neck Shoulder and Arm Pain
- Headaches and Migraine
- Sports/Occupational injuries
- RSI/Carpal Tunnel
- Back Pain in Pregnancy
- Arthritic Pain
- Trapped Nerves
- Joint Problems



01306 887793

316 High Street Dorking RH4 1QX  
[www.dorkingchiropractic.co.uk](http://www.dorkingchiropractic.co.uk)

HSA



Registered by the General Chiropractic Council • Member of the British Chiropractic Association

### DORI VANA PLUMBING

YOUR LOCAL PLUMBER

EXPERIENCED, RELIABLE  
AND PROFESSIONAL

From changing washers to changing bathrooms

CALL DORI

07977 220465 / 01306 887282

Proud members of  
**Checkatrade.com**  
Where reputation matters



## ST MICHAEL'S CHURCH

*within the United Benefice  
of Leatherhead and Mickleham*

Incumbent – The Rev'd Graham Osborne  
01372 372313

### PARISH PRIEST

The Rev'd Malcolm Raby 01372 378335  
07810 088594  
rm.raby007@btinternet.com

### CHURCHWARDENS

John Banfield 01372 373912  
banfieldjohn@aol.com

Mrs Anne Weaver 01306 883932  
weaver\_anne@hotmail.com

### PARISH ADMINISTRATOR

Mrs Alison Wood 01372 376443  
admin@micklehamchurch.org.uk

### PCC SECRETARY

Mrs Elizabeth Moughton 01306 883040  
eliz.moughton@btinternet.com

### TREASURER

Richard Siberry 01372 375303  
Siberrman@aol.com

### BAPTISMS CO-ORDINATOR

Mrs Vickie Leney 01306 884054  
vleney100@gmail.com

### FUNERALS ORGANISER

Brian Wilcox 01372 374730  
dbrianwilcox@sky.com

### WEBSITE MANAGER

Mrs Sarah Ward 01372 383350  
sarwar\_63@hotmail.com

[www.micklehamchurch.org.uk](http://www.micklehamchurch.org.uk)

*For information about services for other  
denominations see website pages.  
Search on 'Churches Together Mole Valley'*

## PARISH REGISTERS

### BAPTISMS

20<sup>th</sup> August Mabel Ivy Vivien daughter of Peter  
and Kate Snell  
Jamie Austen Pimm son of Richard  
and Emily Jones  
26<sup>th</sup> August Jack Shinji and Josh Shinichi sons of  
Gregory and Shizuka Dann

### WEDDING

19<sup>th</sup> August Russell James Howes and  
Kirstyn Louise Rzepka

THANKSGIVING SERVICE AND BURIAL IN  
ST MICHAEL'S CHURCHYARD

25<sup>th</sup> August Elizabeth Jane Rudolf  
13<sup>th</sup> September Richard Roberts-Miller

## Calendar of Events October

### 1 Sunday 16th Sunday after Trinity (HARVEST FESTIVAL)

8 a.m.  
9.45 a.m.  
**11 a.m.**

Holy Communion (Order 2)  
Harvest workshop (St Michael's School)  
Harvest Family Service, with families  
from workshop **NOTE TIME**  
Bible Study Group  
Thanksgiving Service for the life of  
John Batt

5 Thursday 11 a.m.  
6 Friday 11.30 a.m.

### 8 Sunday 17th Sunday after Trinity

8 a.m.  
10 a.m.  
11.30 a.m.

Holy Communion (Order 2)  
Holy Communion  
Morning Prayer BCP (WESTHUMBLE CHAPEL)  
St Michael's School Assembly in church  
Deanery Synod meets  
Bible Study Group  
St Michael's School Open Day

9 Monday 9.15 a.m.  
11 Wednesday 11 a.m.  
12 Thursday  
13 Friday 9.15 to 11 a.m.

### 15 Sunday 18th Sunday after Trinity

8 a.m.  
10 a.m.

Holy Communion (Order 2)  
Holy Communion  
St Michael's School Open Day  
Quiz Night in aid of Nursery and Playground  
Bible Study Group  
Men's Breakfast at The Running Horses

16 Monday 1.15 to 3 p.m.  
8 p.m.  
19 Thursday 11 a.m.  
21 Saturday 9 a.m.

### 22 Sunday 19th Sunday after Trinity

8 a.m.  
10 a.m.

Holy Communion Order 2 (WESTHUMBLE CHAPEL)  
Holy Communion  
Start of school Half Term  
Tea at 3 at St Anthony, Pilgrims Way  
Women's Breakfast at The Running Horses

23 Monday 3 p.m.  
28 Saturday 9 a.m.

### 29 Sunday Last Sunday after Trinity (Bible Sunday)

8 a.m.  
10 a.m.

Holy Communion (Order 2)  
Morning Praise Service for Bible Sunday

## DATES FOR YOUR DIARY

Saturday 4<sup>th</sup> November – Westhumble Bonfire & Fireworks  
Sunday 5<sup>th</sup> November – Shoebox Sunday  
Sunday 12<sup>th</sup> November – A Concert for Remembrance Sunday

## MEMBERS OF THE PAROCHIAL CHURCH COUNCIL

James Aarvold John Banfield Carole Brough Fuller  
Mark Day Jenny Hudlass Elizabeth Moughton  
James Riches Richard Siberry  
Amanda Wadsworth Simon Ward  
Paul Wates Anne Weaver Colin Wyld

## TOOLS WITH A MISSION (TWAM)

[www.twam.co.uk](http://www.twam.co.uk)

TWAM is a Christian charity committed to the recycling and refurbishment of tools which then can provide a means for poorer people in developing countries to learn a trade and be able to support themselves and their families. With this practical help, thousands of young men and women have benefited from the skills they have learned. They need:

- garden forks & spades, saws, hammers, drills pickaxes etc
- sewing or knitting related tools, thread, zips, scissors
- embroidery items, fabric and sewing machines
- wool and knitting needles, patterns
- portable typewriters, printers and laptops

If you have any of the above which could be used to help someone to have a better quality of life and hope for the future, please contact Carole Brough Fuller: 01737 842918 [cbroughfuller@btinternet.com](mailto:cbroughfuller@btinternet.com)

## HELPING HANDS

INCLUDING FOOD FOR FRIENDS

*A service for all residents of Mickleham and Westhumble*

Examples of services we offer:

- Transport for visits to doctor's surgery or hospital
- Essential shopping / collection of prescriptions
- Changing library books
- Small tasks: eg changing fuses, altering clocks etc
- Dog walking / care of pets
- Visiting / befriending
- Home-cooked meals for local families going through difficult times

Requests to Mary Banfield 01372 373912  
or leave a message on answerphone.  
Callers will be contacted within 24 hours

*More helpers needed – please contact  
Mary if you can spare some time.*



# Community Directory

Continued from page 13

|                                                                                                                                        |                                                                                   |
|----------------------------------------------------------------------------------------------------------------------------------------|-----------------------------------------------------------------------------------|
| MICKLEHAM & WESTHUMBLE BOOK CLUB<br>Mrs Bernice Bailey                                                                                 | 01306 741310<br>bpbailey_uk@yahoo.co.uk                                           |
| MICKLEHAM & WESTHUMBLE CRICKET CLUB<br>Team Secretary – Will Dennis                                                                    | 01372 372684<br>will@micklehamhallfarm.co.uk                                      |
| MICKLEHAM & WESTHUMBLE HORTICULTURAL SOCIETY<br>Chairman – Mrs Judy Kinloch<br>www.surreycommunity.info/mwhs                           | 01372 375358<br>mail@jkinloch.plus.com                                            |
| MICKLEHAM AND WESTHUMBLE LOCAL HISTORY GROUP<br>Chairman – Ben Tatham                                                                  | 01306 882547<br>ben@thetathams.co.uk                                              |
| MOLE VALLEY DISTRICT COUNCIL<br>Councillor – Duncan Irvine                                                                             | 01306 885001<br>07738 384287<br>duncan.irvine@molevalley.gov.uk                   |
| THE ARTS SOCIETIES (FORMERLY NADFAS)<br>Betchworth – Miss Mary Venning<br>Dorking – Mrs Sue Tatham<br>Leatherhead – Mrs Sarah Sheridan | 01306 883301<br>01306 882547<br>01306 883699                                      |
| ST MICHAEL'S CHURCH OF ENGLAND (A) INFANT SCHOOL<br>Friends of St Michael's School – Mrs Meredith Shiers                               | 01372 373717<br>info@stmichaels-dorking.surrey.sch.uk<br>meredithshiers@gmail.com |
| ST MICHAEL'S COMMUNITY NURSERY<br>WEEKDAY MORNINGS – MICKLEHAM VILLAGE HALL<br>Supervisor – Mrs Hilary Budd                            | 01372 361021                                                                      |
| SURREY COUNTY COUNCIL<br>Councillor – Mrs Hazel Watson                                                                                 | 03456 009 009<br>01306 880120<br>hva.watson@btinternet.com                        |
| SURREY WILDLIFE TRUST                                                                                                                  | 01483 795440<br>info@surreywt.org.uk                                              |
| WESTHUMBLE RESIDENTS ASSOCIATION<br>Chairman – Holly McLaren                                                                           | 07887 660129<br>westhumble.residents@gmail.com                                    |
| WESTHUMBLE NEIGHBOURHOOD WATCH<br>Lead Co-ordinator – David Allbeury                                                                   | 07860 227451<br>westhumble.neighbourhood.watch@gmail.com                          |

## ADDITIONAL CONTACT INFORMATION

|                                                                                                   |                                                                    |
|---------------------------------------------------------------------------------------------------|--------------------------------------------------------------------|
| CITIZENS ADVICE<br>Dorking – Lyons Court<br>Leatherhead – Swan Mews, High Street                  | 0844 4111 444<br>0844 4111 444                                     |
| POWER CUT HELPLINE                                                                                | 0800 783 8866                                                      |
| CRIMESTOPPERS                                                                                     | 0800 555 111                                                       |
| POLICE<br>Non-emergencies<br>(often quicker to make online report) https://report.police.uk/      | 101                                                                |
| Neighbourhood Specialist Team – Dorking Rural North<br>PCSO 40541 Lee Munday<br>PCSO David Sadler | lee.munday@surrey.pnn.police.uk<br>Sadler8761@surrey.pnn.police.uk |

## Babysitting by local teenagers

|                   |              |
|-------------------|--------------|
| Chris Rowland     | 01372 376712 |
| Freya Pearce      | 01306 884724 |
| Olivia Parkin     | 07887 367850 |
| Maisy Presley     | 07720 657327 |
| Isabella Pererira | 07515 489067 |
| Issy Nash         | 01306 742762 |
| Ailsa McNaughton* | 01306 887408 |
| Patrick Moran     | 01306 640043 |
| Katie Light       | 01306 881953 |
| Ellie Kim         | 07773 395575 |
| Ailsa Graham      | 01306 889855 |
| Anna Forti        | 07557 964530 |
| Alexa Dewar       | 01306 884744 |
| Emily Brewer      | 01306 883793 |
| Philomena Ala     | 01306 885767 |
| Delphine Ala      | 01306 885767 |

\* In holiday time only

*If you would like to add your name to this list, please get in touch with the Editor.  
No charge.*

## Advertising in the Parish Magazine

Please contact the Editor.

Small ads: a nominal fee is charged for ads where items or services are bought or sold.

We have been advised to print the following reminder:  
*We cannot guarantee the quality of the goods and services offered by our advertisers.*



## Rosemary Anne Vaughan 1932 - 2017

Many friends and family gathered at Bookham Baptist Church on 8th September for a service to celebrate Anne Vaughan's life. In his tribute, her son Andrew described Anne as 'sociable, talkative, engaging, incredibly caring of others, a good Christian, sometimes a bit of a drama queen (but then I do remember growing up going to watch her various performances with the Bookham Players). But above all she was a wonderful mother, grandmother, great grandmother, friend, and supporter of everyone here today.'

Born in Wimbledon, Anne spent her childhood in Putney and Ashted. When she was around six-years-old she contracted polio, and was gravely ill and in a coma for two weeks. How she dealt with that gives some insight into her strength of character and fighting spirit which was characteristic throughout her life.

Anne probably should have gone to university, but her father was determined that she would become a famous concert pianist so off she went to Trinity College London to study music. This was not a success, so secretarial college followed and then a

job at a music publishers in Bond Street London.

By this time the family were living in Epsom and Anne joined Epsom Badminton Club, apparently not for the love of the sport, but to make new friends. And it was there that she met her future husband, Robin. They were married in 1961. In 1968 the Vaughan family which by then included Andrew and Caroline moved to Bookham. They remember very happy days there. Robin and Anne were very sociable and warmly welcomed everyone, including their children's friends into their home.

According to Andrew one of the happiest periods of their parents' life was after Robin was made redundant. They sold the house in Bookham and lived very modestly, spending time with their grandchildren, before taking on completely new roles as shopkeepers in Mickleham in 1995. Their time at Rose's Stores was a very happy one. Even the armed robbery, when Anne was forced at gunpoint to hand over the post office cash, did not overly deter them. Their contribution to the local community was greatly appreciated and in 2005 when they gave up the shop there was



Photograph: Ben Tatham

a big party in the village hall to bid them farewell.

Robin and Anne then settled back into life with their many friends in Bookham. Especially after Robin's death Anne became very involved in the Baptist Church there. Many at her service spoke of her warm friendship, wise counsel and her selfless devotion to her family. During her later years Anne found enormous comfort in her strong faith. Explaining her decision to donate her body to medical science, she said 'it will have done its job for me and I am off to a better place so maybe someone else will take some benefit from it'. Thinking of others to the last. Rest in peace, Anne.

## Richard Roberts-Miller

A service of thanksgiving for the life of Richard, who died on 21st August, was held on Wednesday 13th September at St Michael's Church, followed by a burial in the churchyard. Richard's death was reported as late news in the last magazine. Because the service did not take place until after to the printing deadline for this magazine, a full tribute will follow in the November magazine.

## Mickleham & Westhumble Village Fête

Just a reminder that the 2018 Mickleham & Westhumble Village Fête will be held on Saturday 7th July: please put the date in your diaries and keep in mind when planning next year's holidays!

We would like as many people as possible from the whole community to be involved on the day, and if you feel able to help by manning a stall for an

hour we would love to hear from you.

Even better, if you have an idea for a new stall or activity we could include this year, or if you would like to be part of the core committee and help with the planning, please get in touch as soon as possible with Alison Wood on alison.wood29@btinternet.com or 01372 376443.



- Bespoke dress making
- Clothing alterations
- Sewing lessons
- Soft furnishings
- Curtains
- Roman Blinds

Contact Tracey: 07511 079441 Email: traceyssewingroom@gmail.com



## Community News

Welcome to James Christie and Anna Shaw Taylor who have recently moved to Burney Road from Richmond with children Tom, 2 and Mia, 3 months.

Congratulations and best wishes to Russell James Howes and Kirstyn Louise Rzepka who were married in St Michael's on 19th August. Kirstyn is the daughter of Steve and Jacky Rzepka of Burney Road.



We are always grateful to receive news items from our readers

## John Batt

We were very sorry to hear, so soon after the death of Jane Batt, that John died on 26th August at the age of 88, less than two weeks after the thanksgiving service for Jane's life.

A thanksgiving service for John's life is to be held on Friday 6th October at St Michael's Church.

John made an enormous contribution to the local community life, not least with his wonderful summer concerts over many years. We hope to include a full tribute in the next magazine. In the meantime we send our love and deepest sympathy to John's family.

## Kerry McCullough

We have just learned of the death on 7th September of Kerry McCullough who lived in Dell Close. Our sympathy to her husband Andy, family and friends. She will be sadly missed by everyone who knew and loved her.

## Christopher Dyson

We were shocked to hear of the sudden death of Chris Dyson of London Road, Mickleham on 12th September and send our sincere condolences to his mother.

## Elizabeth Jane Rudolf née Nix 1948–2017

With great sadness, we record the death of Liz Rudolf on 10th August, after a long battle with cancer which she bore with huge stoicism. Liz was born in London in 1948, the youngest of three and in awe of her siblings, sister Jo (Brown who lives in Mickleham) and brother, Chris. The Nix family moved to Epsom in 1952 where Liz and Jo attended Rosebery School. Liz excelled at sport, ending up as school Games Captain. Ice-skating was a passion which she shared in her teens with her father. After reading geography at Nottingham University and completing her Postgraduate Certificate in Education, she took her first teacher's post at Aylesbury High School.

After Liz married, they lived in the USA where both daughters, Sarah and Nicky, were born. They returned for summer holidays with Liz's family in Devon and eventually England drew Liz and the girls back here for good. They settled in Epsom and Liz taught at Parsons Mead in Ashted until its closure. In 1998, Liz, the girls and Liz's mother, Joyce (now 103), moved to Pilgrims Way, Westhumble. Liz then taught at Dunottar School in Reigate followed by Croham Hurst and Old Palace School in Croydon, where she continued working until Easter despite her illness.

St Michael's Church was packed for Liz's Memorial Service. Nicky bravely paid a very moving tribute to her mother, followed by Sarah's sensitive reading of the poem 'Do not stand at my grave and weep...' Nicky said that Liz's legacy is the huge number of girls whose lives she benefited: far beyond teaching them geography. She never lost her passion and enthusiasm, regarding geography field trips as the best learning experience, Tanzania being her favourite destination. Her great friend, Barbara Steadman-Allen, also paid moving a tribute to Liz, having known her through church as her vicar and accompanying her to Africa. She



was so caring and always wanting to help others, something which was especially evident in Africa, but also back here. Nicky recalled returning one day from Brighton to learn that a homeless Romanian couple whom Liz had met in Brighton were now installed in Nicky's room! She was also a very tolerant mother; Nicky recounted the instance when Liz found Nicky and Sarah selling her pots and pans outside their previous home to raise money for an animal sanctuary! But it was Liz's huge support and encouragement that enabled Nicky to become a vet, rehoming many rejected animals along the way.

During her life, Liz lived in both Germany and the USA and her daughters benefited from her love of travel and education. They went on amazing holidays, often exploring remote places, gaining invaluable life experiences. While Nicky was caring for Liz in the last few months at home, she realised just how loved and inspirational she was. She could talk to anyone about anything, never losing her lively spirit and always taking an interest in other people's lives. Often a 10-minute local stroll took an hour because of stopping to chat to neighbours along the way. Nicky thanked all those who during Liz's long illness visited her, took her out, brought her food and gave many acts of kindness which all helped her to continue fighting. Nicky most remembers Liz for her love of life, her compassion and her perseverance through adversities. She and Sarah could not have asked for a better mother.

We send our deepest sympathy to Nicky, Sarah, Jo, Chris and Joyce.

## The End of One Season Heralds the Start of Another

Although Autumn has many charms, there is always some feeling of loss when we sense that Summer is over for another year. As the mornings darken and the nights close in, so our gardens start to look a little tired and past their sell-by date. Already, though, the start of another year will be showing in the appearance of leaves of early bulbs such as muscari and new growth will soon be showing at the base of early perennials, for example the fat pink shoots of herbaceous paeonies.

What to do about this end of season? To prevent early disappearance of some later blooming flowers, nothing beats dead-heading. This should, of course, have been taking place all year but it is easy to be overwhelmed by other tasks in the growing season. Now it can make a real difference to hanging on to some colour in borders. I have a marvellous deep red snapdragon (antirrhinum) that I sowed many years ago called 'Black Prince'. As is the way with snapdragons it seeds very freely and although I still have some which are as dark and velvety as the original, others are now simply deep red. I do not mind, as what I really like is firstly the way they seed in the most infertile and unlikely places and secondly the

way they respond to deadheading with such vigour. Individual plants do not, admittedly, last for very long but there are always plenty of seedlings.

Looking forward to next season, now is the time to think about which sweet peas you might like to grow next year. Such choices: individual colours, bi-colours in many subtle shades, growing height, (there are dwarf varieties) and the importance of scent. An unscented sweet pea would be an abomination! One of the oldest, 'Matucana' is said to have originated in Peru in 1543. Having decided, you can start them off very shortly in pots or specially designed root-trainers (the latter give more room for root development) in a cool greenhouse or a cold frame. Next Spring will do but autumn sown plants are said to be more vigorous and resilient while their flowers are larger and last longer. This is the experts talking. I start mine off early in the New Year and they do fine. If you grow your own vegetables, broad beans can similarly benefit from an early start in seed trays or pots in an unheated greenhouse or cold frame.

So endings are never finite – there are beginnings to look forward to!

Judy Kinloch



Some bright autumn colour: top: *Cyclamen hederifolium* spread freely; centre *Rudbeckia Goldsturn*; bottom *Rudbeckia Little Gold Star*

Believe in  
children  
Barnardo's

## LEITH HILL PLACE the house and its owners

A talk by Anna Trenter  
Assistant Manager at Leith Hill Place.  
Wednesday 22nd November  
7.30 p.m.

Ashleigh Grange, off Chapel Lane, Westhumble  
Entrance is by donation to Barnardo's  
and coffee and wine will be served.

Due to limited space please book early.

Contact Angela Gilchrist on 01306 884613 or  
ar.gilchrist@btinternet.com

Lifeboats

## Christmas Fair

Tuesday 21st November  
9.30 a.m. to 1 p.m.

at Dorking Rugby Club RH3 7LZ

RNLI Christmas cards and souvenirs, homemade cakes, fashion accessories, jewellery, shoes, chutney and much more. Tea/coffee and cake will be available. Free on-site parking is available and the clubhouse has disabled access to both floors. Please come along for early Christmas presents.

We need cakes, biscuits, fudge, etc for our cake stall. If you could contribute it would be appreciated.

Please bring your old and new foreign money (including discontinued currencies), old mobile phones and used inkjet cartridges (not Epson) for recycling

Contact: dorkingrnli@gmail.com



## NEED A CARER?

Highly experienced, qualified  
carer available

Hours to suit your needs

Cheryl 07810 881 267



Extensions and alterations often require a  
**Structural Engineer**

**Robert Wynter & Partners Ltd**

**01306 879875**

Book House, Vincent Lane  
Dorking RH4 3HW

## Get IT Fixed, Get IT Connected

Expert Repair & Maintenance



Brockham based. No call out charges. Fully transparent quotations  
with no hidden costs. We make technology work for you.

Call us now on  
**01737 845980**

ChalkHill Systems  
[www.chalkhillsystems.co.uk](http://www.chalkhillsystems.co.uk)

## Painting

Decorating, tiling,  
Curtain & blind hanging,  
Wallpapering,  
Furniture assembly etc.

- Fully insured
- Free estimates
- References available

Tel: Martin 07770 441 201



## Vivien Cresswell

Made-to-measure Soft Furnishings

Curtains, Roman Blinds, Cushions



Extensive range  
of fabrics

**01737 843858**

[www.cresswellscurtains.co.uk](http://www.cresswellscurtains.co.uk)

## Mike Palmer

**Electrical Services**

Part P registered electrician



From additional lighting and sockets  
to complete rewires

Fully insured Registered with the NICEIC

07866 930483 [mike@mikepalmer.biz](mailto:mike@mikepalmer.biz)

Boxhill Way, Strood Green, Betchworth RH3 7HY



## KING WILLIAM IV

Autumn has come with a bang this year. It seems like only five minutes ago that jazz was starting and crab was entering the menu and now it is making a rapid exit for sausage cassoulet and venison, etc. And unbelievably Christmas cards are in the shops! On the plus side, we have our favourite Autumn events coming up. On Monday 16th October, the quiz with Martin & Kate Cox to raise money for the playground & nursery. And on Monday 6th November our last quiz with Malcolm in his official capacity as parish priest. Although we are hoping, with your help, to twist his arm to come back from retirement and host some more quizzes in the future! And finally, on Sunday 5th November we shall have Anne's favourite: a few fireworks & sparklers for our neighbours and regulars.

We hope to see you at one or more of these events.

Eamonn and Anne

Byttom Hill, Mickleham 01372 372590 [www.thekingwilliamiv.com](http://www.thekingwilliamiv.com)

## Mickleham Parish Council

Mickleham Parish Council met on 13th September, the evening of Richard Roberts-Miller's funeral, and began with a minute's silence to honour the memory of its past Chairman who had given so much to both the Council and the community.

\* \* \*

The Parish Council is taking the first steps towards introducing a housing strategy to which developers must pay heed in any future development for the village.

After a resident drew attention to the fact that there was no definite policy in place to tackle housing need, Councillors invited Louise Williams of Surrey Community Action to their Annual Meeting and she gave an interesting talk, outlining the different options available.

A strategy would enable the Parish Council to be more pro-active in planning issues to be able to lay down guidelines of what it wants to see. In the

absence of any strategy, developments are more likely to be imposed on communities against their will.

It comes against a background of concern over the lack of young families moving into the village because of prohibitive property prices.

At its September meeting the council considered producing a Neighbourhood Plan which other communities have undertaken. However the overwhelming view was that a NP was excessive in scope for a village of Mickleham's size. Other villages who had spent considerable time and expense drawing up a NP then found that some aspects of it were not compatible with their district council's Local Plan.

Councillors took the view that a Village Design Guide might be more tangible and appropriate for Mickleham. This would cover three main areas: a) giving a history of the village, identifying and describing the community; b) identifying the type of housing that



already exists and c) outlining the type of housing development that would be welcomed in the future.

Before their next meeting on 8th November, Councillors will circulate other examples of VDG's and consider the best way forward.

\* \* \*

The Parish Council is hoping to replace the noticeboards by the bus stop opposite the Running Horses and at the bottom of Byttom Hill. It will also introduce new waste bins with lids at both ends of the footpath on the Recreation Ground.

Trevor Haylett, Clerk

Photograph: John Burge



A late brood of swallows who have just taken their first flight: seen on a recent walk

For information about membership contact Dave Putland 01372 454850 or e-mail [theputlands@aol.com](mailto:theputlands@aol.com).

## Dorking and District RSPB Group

On Wednesday 18th October Dorking and District RSPB group plan to birdwatch along the River Mole from the car park at the foot of Box Hill. The intention is to use the reopened footpath towards Brockham, checking on the newly formed scrape opposite Pixham to see what, if any birds are yet making use of it. We meet at the car park at 10.30 a.m., carrying lunch. Walks normally end at about 2.30 or 3 p.m.

The group holds local walks twice monthly and occasional weekend walks to more distant locations, usually on the Sussex or Kent coast. At monthly indoor meetings we have talks on a wide variety of bird-related subjects. It is a friendly group which welcomes new members or visitors. There is a small charge for non-members.

Details of walks and indoor meetings can be found at the website [www.rspb.org.uk/groups/dorkinganddistrict](http://www.rspb.org.uk/groups/dorkinganddistrict).

07871 051661 / 01372 458616  
[timskerrittgroundworks.co.uk](http://timskerrittgroundworks.co.uk)

**TimSkerritt**  
LANDSCAPE & GROUNDWORKS

## Turn your vision into a reality

Tim Skerritt Landscape & Groundworks offers a comprehensive range of services to both commercial and domestic clients across Surrey.

From hard landscaping to extensive site excavations, we offer a high quality, honest, reliable and competitively priced service, guaranteed to meet all your needs. Contact us today to find out more.

## Foot Care Focus

- Toenail cutting & filing, Diabetic foot care & advice
- Reduction and removal of hard skin, cracked heels & caluses
- Reduction of thickened nails and fungal infections
- Reduction & removal for corns & verrucas
- Treatment of ingrowing toenails & athlete's foot
- Clinic treatment or home visits available

APRIL STANDISH TCFCGdip  
Foot Care Practitioner  
07397 154 000 [april@footcarefocus.co.uk](mailto:april@footcarefocus.co.uk)



## Domestic Appliance Repairs

30 years' experience repairing and installing all gas and electric domestic appliances



- Cookers, Microwaves
- Dishwashers
- Washing machines
- Fridges / Freezers
- Water coolers
- Coffee machines
- Tumble dryers

Contact: Andy 07895 719 706  
kirk21stcentury@aol.com



## GARDENING

£15 per hour – Free quotations

– SERVICES –

- Gardening Maintenance —
- Hedge Trimming Specialists —
- Garden Design —
- Soft Landscaping —

07740 308 490 contoursgardening@outlook.com  
www.contoursgardening.com

## Julie Watts Family Law

AN AFFORDABLE AND EXPERIENCED PROFESSIONAL ALTERNATIVE TO TRADITIONAL SOLICITORS

- Divorce • Arrangements for children • Finances
- Court Proceedings

PROUD TO PROVIDE A DIFFERENT KIND OF SERVICE

- Affordable fees • Straight-talking advice
- Practical, real support

Contact me for a consultation

07808 572157 juliewattsfamilylaw.co.uk



Open  
Monday to Friday  
8 a.m. - 5 p.m.  
& Saturday  
8 a.m. - 1 p.m.

ALL Leading makes of lawn mowers  
& garden tractors catered for

Reasonable rates

Free estimates & friendly service

Paul White Bookham 01372 458008

## Need help with your accounts?

If you run your own business you will appreciate how difficult it can be to keep up with your accounting paperwork.

However, meeting deadlines and understanding the financial health of your business are crucial to avoiding penalties and ensuring that the hard work you put in pays off where it matters – in your pocket

- Tailored accountancy local to Dorking – saving you time
- Fixed fees – saving you money • Free Xero software – simple invoicing

Call today to arrange a  
free no-obligation  
consultation

01737 652 852

esther@a4cgroup.co.uk  
natasha@a4cgroup.co.uk



Tree Health Care Specialists



Chadhurst Farm, Coldharbour Lane, Dorking, Surrey RH4 3JR

Tel: 01306 741800 Fax: 01306 885150

Email: james@treeline.co.uk www.treeline.co.uk

## Dorking Pest Control Services

Local Authority Approved Contractors



Our Services include: Wasps, Bee Swarms, Hornets, Rats, Mice, Squirrels, Fleas, Flies, Ants, Cockroaches, Bed Bugs, Rabbits, Moles, Foxes and Deer



• Domestic, Commercial and Industrial • Contract Work • Preventative Control Programmes

Experts in pest control throughout Surrey

Office: 01306 743001 Ivor: 07710 117491 Chris: 07971 519415

www.dorkingpestcontrol.com

INSPIRATIONAL  
Box Hill School

## Dalewood House on show for Heritage Open Day for the Second Year

On Saturday 9th September some 40,000 volunteers across England organized 5,000+ events to celebrate the nation's fantastic history, architecture and culture by taking part in the national Heritage Open Day, this year Box Hill School was delighted to take its part by opening Dalewood House to the general public for the second year in a row.

Heritage Open Day is a yearly chance to see hidden places and the majority of the day's visitors to Dalewood had been to the school before and all were intrigued to see what lay behind the mock gothic façade. Members of the school staff conducted tours around the 'Gothic revival style country mansion', which was built by speculative property developer Charles Fox in 1883. He saw an opportunity in the market to appeal to wealthy industrialist families seeking a rural retreat which had become possible through the expanding railway network.

To build his 'aspirational' house Charles Fox chose the pre-eminent architect of the time John Norton (1823 – 1904) whose style was inspired by the celebrated Victorian architect Augustus Pugin (1812–1852). Both designers centred their work on the revival of the pointed structure of the Gothic arch, which symbolised

Christian striving towards heaven and Christ's resurrection. Pugin is quoted as expressing that the ideal is that '... there should be no features about a building which are not necessary for convenience, construction or propriety, ... all ornament should consist of enrichment of the essential construction of the building ... and that... in pure architecture the smallest detail should have meaning or serve a purpose- beauty and piety'. In that way Dalewood is very much a building of its time.

In 1890 Charles Fox sold the Dalewood House Estate to Mr David Evans, one of the 19th century's pre-eminent silk printers and chairman of 'David Evans & Co'. David Evans died in 1901 but his wife Sarah continued to live there. After she died in 1912 the house passed to their daughter Lucie Fosbery.

Lucie and her husband Charles Widenham Fosbery continued at Dalewood until it was requisitioned by the British Army as headquarters of the Canadian Army Pay Corps in the Second World War. By 1951 the house had been taken over and run as St Nicholas School by two Australian sisters. In 1959 Box Hill School was founded on the site by Mr Roy McComish, a Housemaster from Gordonstoun School in Scotland.



During the tours, one of our guests asked us if the original stained glass windows that are still part of the house now were packed away during WW2, to which we do not know the answer. Another subject that as a school we know very little about is the Canadian Army's time staying in Dalewood House, do you remember them being here? Do you know about the stained glass windows? We would love to hear from you, please contact Samantha.bushell@boxhillschool.com

It was great to see so many familiar faces from the village attend and you are always welcome to visit us at any time to tour Dalewood, please do give us a call we would be delighted to see you.

Samantha Bushell

Many thanks to everyone who has helped to increase our supply of strong plastic bags for MPM deliveries. Please keep them coming.



## BRAIN TEASER

Say what you see.  
Can you translate this diagram into words?

289SAFETY5038

Answer on page 26.

Juniper Hall Honey  
From our own hives  
Now on sale!



118 gms £3 / 365 gms £8  
Visit our shop or ask at reception



## TONY WINCH

### CARPENTER, JOINER & CABINET MAKER

[www.tonywinch.com](http://www.tonywinch.com)

01306 742373

07969 016 924

## PLASTERING

John Hooper  
over 30 years' experience

Work includes float and sett, skimming, screeding,  
traditional rendering, modern coloured rendering  
(monocouch) cornicing  
from small ceilings to large newbuilds  
07946628190 01737423489  
[j.hooper-plastering@hotmail.co.uk](mailto:j.hooper-plastering@hotmail.co.uk)



## R A BUTLER

INTERIOR AND EXTERIOR  
PAINTING & DECORATING  
OVER 30 YEARS' EXPERIENCE



**BUILDING  
REPAIRS  
UNDERTAKEN**



PATIOS, DECKING ETC NO JOB TOO SMALL

LOCAL REFERENCES IF NEEDED

01372 372586 / 07776 256131

## Shakespeare Electricals

Your local electrician



Fully qualified  
and insured



10% off labour costs with this advert

Call Matthew on 07783 553880

[www.shakespeare-electricals.co.uk](http://www.shakespeare-electricals.co.uk)

## Building Plans

For home improvements & extensions

Including planning & building regulations  
Fast efficient service at competitive rates

**MICHAEL LLOYD**

CEng MICE MINT

For free consultation:

Phone: 01483 205479 or 07958 791 402

Email: [michael@lloydplanning.london](mailto:michael@lloydplanning.london)

## OSTEOPATH

NICK WOOLLEY

BSc (Hons) Ost

Osteopathy for all ages

Also offering Cranial Osteopathy and  
Myofascial Acupuncture needling treatments

For advice or an appointment

01372 379270

[www.Headleyosteo.com](http://www.Headleyosteo.com)

## COOK

### ARBORICULTURAL LTD

Professional planting, Tree surgery,  
Surveying & Remedial work in Surrey

Tree removals ~ Stump Grinding ~ Planting  
Tree reductions & pruning ~ Tree health & development site surveys

For a free, no obligation quote please get in touch:

07739 681 706 [alex@cookarbor.co.uk](mailto:alex@cookarbor.co.uk) [www.cookarbor.co.uk](http://www.cookarbor.co.uk)

Michaela's Cottage, Fredley Park, Mickleham, Dorking RH5 6DE



## A turnip for the books!

Time waits for no man - or nursery - it seems, and I cannot believe we have finished another academic year and by now, have now started the next one.

July was particularly busy, beginning with a field trip to Juniper Hall. The centre is run by the Field Studies Council, an environmental education charity providing opportunities for people of all ages to discover, explore, and understand the environment. The children enjoyed a morning of pond dipping and insect spotting, among other activities, and the trip was a wonderful chance for us to use our beautiful surroundings in Mickleham to learn more about the natural world.

The nature theme continued with a visit from Dama, a three day old abandoned fallow fawn who spent a day at nursery. She is being cared for by one of our team, who is now Dama's surrogate mum! Sadly, the sometimes cruel side of nature also struck at the end of June, with the sad demise of our three chickens, Penguin, Tufty Top and Crackle, who were killed by a fox.

July saw our end of term performance which took place in the Village Hall in front of expectant parents, grandparents, siblings and carers. This year we showcased 'The Enormous Turnip' and the show was a chance for our children to shine on the 'big stage'. Taking pride of place alongside the children was our own enormous turnip, a papier-mâché masterpiece that we are proud to say went on to triumph in the Mickleham & Westhumble Horticultural Show in the 'Any other vegetable of outstanding quality' category! The children also presented entries at the Show and the nursery ran the ever-popular refreshments stand.

Next up was our Sports Day, held on a gloriously sunny day, which saw teams compete in running races, pram races, and obstacle courses before the parents had a turn! Finally, the very last day of term which is always reserved for our 'leavers', those children about to take their next step by moving onto primary school in September. We had a lovely day, complete with fancy dress for children and staff alike and celebrated with a party at the nursery. This is always a bitter sweet occasion as we bid our farewells to the children who have grown and matured in our care, but we send them on knowing that we have given them a fantastic start to their formal education.

We are now welcoming 24 new children to St. Michael's, are looking forward to getting to know new families and introducing them to the delights of Surrey's best kept secret, the schools of Mickleham!

Hilary Budd



It's back...



## Charity Quiz Night at the King William IV

Monday 16<sup>th</sup> October 8-10 pm

Tickets (in advance only) £10 per person. Teams of 3-5 please.

Tickets from the pub or from St Michael's Nursery

Alternatively Heather Bourne – [bourneheather@hotmail.com](mailto:bourneheather@hotmail.com) / 07967 812103

Proceeds split between the St Michael's Nursery and Mickleham Children's Playground Charity





## Mickleham Village Hall, Dell Close

Weekdays 9.15 a.m. - 12.15 p.m. (term time)

WITH OPTIONAL LUNCH CLUB

On Mondays and Thursdays there is the option for children to stay until 2.45 p.m.

Maximum 26 children per session

• playing naturally • learning naturally

We offer an excellent range of pre-school activities for 2½ to 5 year-olds where they can learn through play in an informal, friendly atmosphere.

Contact us for more information about admissions

01372 361021 [www.stmichaelscommunitynursery.co.uk](http://www.stmichaelscommunitynursery.co.uk)



## St Michael's Youth Group

School years 7-9 for 11-to 14-year olds  
on alternate Friday evenings during term time

Mickleham Village Hall  
7.15 - 8.30 pm

13<sup>th</sup> October, 3<sup>rd</sup> & 17<sup>th</sup> November, 1<sup>st</sup> & 15<sup>th</sup> December

For more information contact Jonathan or Sarah Blake 0778 7126 966

An opportunity to meet up with friends and join us for games & fun!

## Tuesday Toddles

A new friendly group in Mickleham for kids aged 0-5 years to play along side their Childminder or Registered Nanny

Mickleham Village Hall

Every Tuesday. Term time only 9.30 - 11.30 a.m.

For more information please contact:

Natalie 07790 318 653 or ask to join our closed

Facebook group for Tuesday Toddles for regular updates.



Next term for Bugs: 4th Sept - 4th Dec

Mondays: 11am and 1.30pm  
Tuesdays: 10am, 11am and 1.30pm  
Session length: 45 minutes  
For more info or to register contact:  
[learningboxhill@nationaltrust.org.uk](mailto:learningboxhill@nationaltrust.org.uk)



**BRAIN TEASER answer: SAFETY IN NUMBERS**

It is getting closer... The bonfire will take place on Saturday 4th November.  
Your help is needed with the construction - see page 10.



## New Executive Head Paula Bliss writes...

It is an honour and privilege to be given the opportunity to work in another village infant school and I am looking forward to working alongside Sandra Peers and the rest of the team here at St Michael's, continuing the good work and building on the firm foundations that have been laid under the headship of Mr Smith. I have worked as the Headteacher of Newdigate Infant School since April 2015 and loved every minute of it! My experience there has given me a real insight into the value of small village infant church schools and I want to see them and the children inside them grow and flourish in the future. Coming to St. Michael's will give me the opportunity to do this. Working with Sandra Peers as Head of School is an exciting and innovative step in my leadership journey and one that will no doubt provide me with many challenges and rewards. I look forward to getting to know the school and the people connected with it.



## New Head of School Sandra Peers writes...

I am very excited to begin working at St Michael's this term and getting to know the families and community. I began my career teaching in a four-form entry infant school in Epsom, teaching across all the infant year groups during the nine years I spent there. In the last five years at the school I was part of the senior leadership team and took a lead role in the performing arts of the school. I also led English and enjoy inspiring the children to write through drama and exciting topics. I truly believe that the key to children learning to their full potential is for them to be inspired and motivated by those teaching them. With my great enthusiasm I hope to make that impact here at St Michael's.



**St Michael's School**

[www.stmichaels-dorking.surrey.sch.uk](http://www.stmichaels-dorking.surrey.sch.uk)

## New School Governor Needed

St Michael's governors are seeking a community governor with an understanding of finance who can join us in December and contribute to the strategic development of the school. It is with thanks that we have to reluctantly say goodbye to Duncan Irvine who has completed four years as a valued governor. If you would like to know more about St Michael's governors please have a look at our website page <http://www.stmichaels-dorking.surrey.sch.uk/governors> To have an informal discussion please contact me either by phoning the school 01372 373717 or email [phand@stmichaels-dorking.surrey.sch.uk](mailto:phand@stmichaels-dorking.surrey.sch.uk)

## Mickleham Village Fête – Saturday 7th July

St Michael's School is one of the main benefactors of proceeds from the fête.

Could you run a new stall or activity?

Alison Wood would love to hear from you. See page 17.

## St Michael's C of E (A) Infant School, Mickleham

Where learning flourishes through natural curiosity

GREAT SCHOOL BEAUTIFUL SETTING THE PERFECT PLACE FOR YOUR CHILD



## Open Day Visits for Prospective Parents

Friday 13th October 9.15 to 11 a.m.

and Monday 16th October 1.15 to 3 p.m.

St Michael's is just off the A24 between Dorking and Leatherhead. Park near Frascati Restaurant.

[www.stmichaels-dorking.surrey.sch.uk](http://www.stmichaels-dorking.surrey.sch.uk) 01372 373717



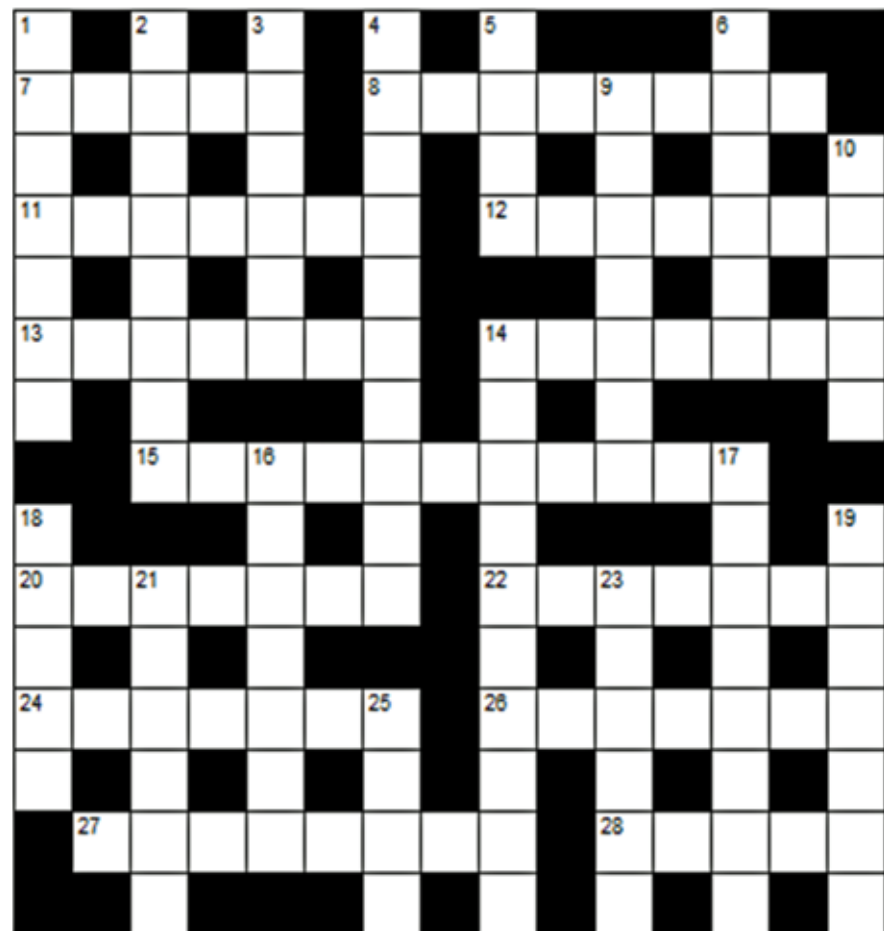
# Cryptic Crossword

## ACROSS

- 7 Fiery-headed island lady (5)  
8 He mixed ice with gin and cola - no civil engineer but a systematic expert nonetheless (8)  
11 Infrared metal (7)  
12 Steady and fair when not involving computers (7)  
13 Mix fast drink without a head (7)  
14 (with 20a & 23d) King, Field Marshal, all rounder (& pilot) - husband of 7, father of 25 & Jo & Beth, inhabitant of 19, and late Mickleham Parish Magazine crossword-compiler (7, 7-6)  
15 Garden menace with car cut by reversing enterprise officer (11)  
20 See 14  
22 Magical realism, i.e. not Cummings-like (7)  
24 Sweet Root swapping shirt for fiver (7)  
26 Fiercely armed in hospital - One Direction to the rescue! (7)  
27 Capital! Rowan Atkinson character has a pulse (4,4)  
28 Avoid pair leaving in the beginning (5)

## DOWN

- 1 Constable repaints non-U coiffure (7)  
2 Coil this up, in what sounds like totally abuse type of treatment (8)  
3 Home of Stevenson is in State of Utah itinerary (6)  
4 Nodding clump in the money (10)  
5 Look, giant is lefthanded not righthanded! (4)



- 6 Lad with management degree resorted to letter to an Athenian (6)  
9 Assembly uses course's stencil outside only (7)  
10 15 among these reads by Jonathan Ross (5)  
14 Is placing behind Vicar but no Second Coming again (10)  
16 Ivan ran away to paradise (7)  
17 Milne sues Pooh! Rings back, is gone, flips and leaves No. 34. Elementary! (8)

- 18 King of Horror cooking recipes, dropping Es (5)  
19 Sounds like Mickleham manner might be basset-like? (7)  
21 I'm Max, a snob, but a thousand thousand times less mixed up than this country (6)  
23 see 14a.  
25 A lexicographer initiates ancient library site downsizing (4)

## SOLUTION TO THE SEPTEMBER CROSSWORD

ACROSS 1 Bewilder 4 Dawdle 9 Urges 11 Broadened 12 Burglaries 13 Chow 15 Aeroplane 17 Mop 19 Sag 20 Abundance  
23 Adam 24 Far too long 27 Idiomatic 28 Naive 29 Aiming 30 Assuages  
DOWN 1 Blurbs 2 Wagers 3 Ember 5 Audi 6 Dinghies 7 Endowing 8 Homespun 10 Syllabub 14 Careworn 16 Redrafts  
17 Mona Lisa 18 Paradigm 21 Roping 22 Egrets 25 Tacos 26 Omen

RR-M



## Richard Roberts-Miller

Besides losing a dear friend and quiz teammate Richard's sudden death was a great blow to me as editor of the parish magazine. For the past 18 years Richard compiled each month's crossword. In 1984 when I proposed revamping the parish magazine at the annual church meeting, Harry Sowden who was sitting next to me whispered in my ear 'I'll do a crossword for you.' This became a very popular feature of

the magazine. And in the past 33 years there have been only two compilers – Harry and then Richard. Here too I must also pay tribute to Richard's wife, Fiona who was his 'quality controller'. So, we are looking for someone to fill this vacancy. Please get in touch if you would like to have a go – just the sort of mental challenge that health pundits are advocating. Our son Andrew, has provided this month's puzzle.

Sue Tatham



6 en-suite rooms from £89 per night including breakfast  
**OPEN**

Monday – Saturday: noon – 11 pm  
Sunday: noon – 10.30 pm

**BREAKFAST** (open to non-residents) **SERVED**

Monday – Thursday: 7.30 – 9.30 am; Friday & Saturday: 8 – 10 am

**LUNCH & DINNER SERVED**

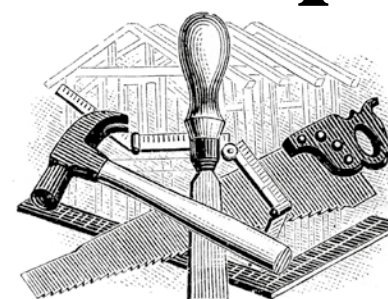
Monday – Thursday: noon – 3 pm & 6 – 9 pm  
Friday & Saturday: noon – 3 pm & 6 – 10 pm  
Sunday: noon – 6 pm

The Running Horses, Old London Road, Mickleham, Nr Dorking, Surrey RH5 6DU  
Call Us: 01372 372279 Email: [book@therunninghorses.co.uk](mailto:book@therunninghorses.co.uk)

## J S Wilson

Mickleham

# Carpentry & Building Services



Extensions ~ Conversions  
Refurbishments ~ Property Maintenance  
Fully guaranteed ~ Fully insured

*One call WILL solve it all*

Contact Jason on: 07761 926684 or 01372 379359  
[jswilsonconstruction@gmail.com](mailto:jswilsonconstruction@gmail.com)



**RB FENCING**

RESIDENTIAL • COMMERCIAL  
AGRICULTURAL • SCHOOLS • ACOUSTIC  
HOARDING • GATES • SECURITY

RICHARDSON & BRADS FENCING LTD  
**T: 01306 640 143 - 01483 414 74**  
E: [INFO@RBFENCINGLTD.CO.UK](mailto:INFO@RBFENCINGLTD.CO.UK)  
W: [WWW.RBFENCINGLTD.CO.UK](http://WWW.RBFENCINGLTD.CO.UK)  
A: 83 SOUTH STREET, DORKING, SURREY, RH4 2JU  
UNIT 45 MARTLANDS INDUSTRIAL ESTATE, SMARTS HEATH LANE, MAYFORD, GU22 0RQ

## John Wadsworth

INDEPENDENT ESTATE AGENTS



CALL NOW FOR YOUR FREE VALUATION

**01372 450500**

[www.johnwadsworth.co.uk](http://www.johnwadsworth.co.uk) [sales@johnwadsworth.co.uk](mailto:sales@johnwadsworth.co.uk)

*A professional, efficient and friendly service*



**Neil A Mason**  
Established 1976



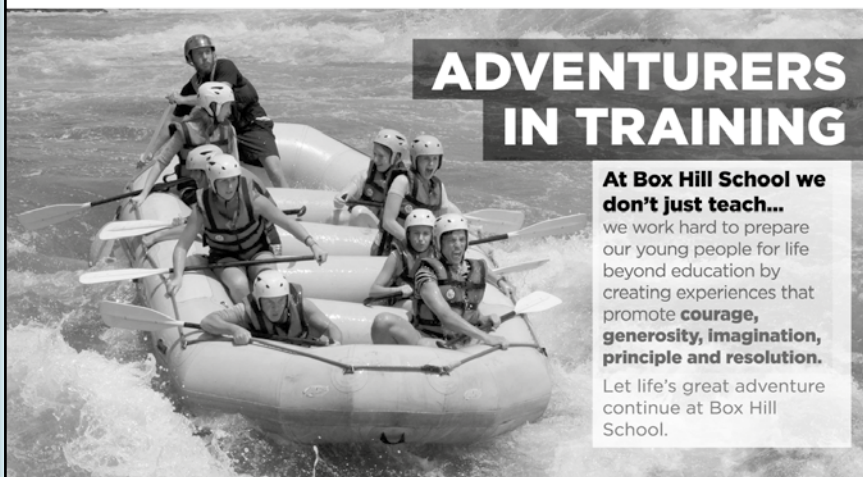
**All electrical & plumbing work undertaken**

Inspections and Testing  
Extra Points, Rewiring etc  
Security and Emergency Lighting  
Temporary Power and Lighting Hire  
Public Address and Sound Systems  
Installed or For Hire  
Complete Bathroom and  
Fitted Kitchen Installation

**WESTHUMBLE**

Telephone: 01306 889073

# INSPIRATIONAL **Box Hill School** for girls and boys aged 11-18



## ADVENTURERS IN TRAINING

### At Box Hill School we don't just teach...

we work hard to prepare our young people for life beyond education by creating experiences that promote **courage, generosity, imagination, principle and resolution.**

Let life's great adventure continue at Box Hill School.

Telephone: **01372 373382**  
or email **admissions@boxhillschool.com**  
**www.boxhillschool.com**

## DAVID TOBITT CARPETS

**FINE CARPETS SUPPLIED  
AND FITTED**

*We have over 30 years' experience  
working in Dorking and the  
local area*

A comprehensive range  
of carpets available

We can bring samples  
to your home

Advice given on all  
types of carpet work



**WE TAKE A PRIDE IN  
WHAT WE DO**

**01306 885032**

**www.davidtobittcarpets.co.uk**

## MARTIN BURGESS LANDSCAPE AND GARDEN DESIGN



CONSULTATION SERVICE FOR  
GARDEN PLANNING, PLANTING  
AND MAINTENANCE

01737 842289 / 07966 183395

## HART SCALES & HODGES SOLICITORS

*We have been serving the Dorking community since 1782 and are proud to support our local parishes*

Our services include:

- Buying and selling your home
- Extending your lease
- Commercial property
- Inheritance Tax planning
- Care fees and Asset protection planning
- Setting up a trust
- Wills and Probate
- Lasting Powers of Attorney
- Divorce Separation and Children
- Employment for employer and employee
- Litigation and dispute resolution
- Business advice

Please call us on 01306 884432 for a FREE initial consultation to discuss your requirements

**www.hartsscales.co.uk**