

# **WHADDON QUARTERLY**



**Local Summer residents**

Photo courtesy of Clive Herbert

**Autumn 2023**

Welcome to Bump Start, the baby shop at Whaddon. We stock everything you could need for your baby, from car seats to cots to carriers. We pride ourselves on our product knowledge and will help find the ideal products for you. We look forward to seeing you soon.

## OPENING TIMES

Mon	Closed
Tue	10am - 4pm
Wed	10am - 4pm
Thurs	10am - 5pm
Fri	10am - 5pm
Sat	10am - 5pm
Sun	11am - 3pm

We are just 10 minutes from both Milton Keynes and Buckingham

## Visit us at:

Bump Start Baby Shop  
Coddimore Farm Whaddon  
Milton Keynes Bucks MK17 0LR

**0800 594 3052**

fax: 01908 505636

email: [baby@bumpstartbabyshop.co.uk](mailto:baby@bumpstartbabyshop.co.uk)

web: [www.bumpstartbabyshop.co.uk](http://www.bumpstartbabyshop.co.uk)



# Welcome to Whaddon Quarterly!

## CONTENTS

Editor's Letter	Pg 4
Chairman's report	Pg 5
Clerk's Corner	Pg 6
Whaddon Quarterly Advertising rates	Pg 6
Whaddon Jubilee Village Hall	Pg 7-8
Get to know your Jubilee Hall Committee	Pg 9-10
Shenley Park SPD & local plan update	Pg 11-14
Neighbourhood Watch	Pg 15
News from Whaddon's W.I.	Pg 16-17
News from Chase Choir	Pg 18
Tribute to Evelyn Jaworska	Pg 18
News from St. Mary's Church	Pg 19-20
Reflections from the Rectory	Pg 21
Shenley Park – Important Dates	Pg 22-23
Planning Snippets	Pg 23
Tea on Tuesdays	Pg 24
Message from the Merry Mowers	Pg 24
Tabletop Sale	Pg 25
How Lady Eileen became Lady Cruise – Part 2	Pg 26-29
Whaddon Table Tennis Club	Pg 29
Whaddon Entertainers Meeting	Pg 30
New Whaddon Quarterly Editor needed	Pg30
Local Advertisers	Pg 31-43
Dates for your Diary - what's happening in Whaddon	Pg 44

**With Warm Thanks to All Contributors and Helpers**

**Editor: Sharon Bessell**

**Proofreading and Distribution thanks to Marianna Beckwith**

**Printer:** Harlequin Press Ltd., 12 Beacon House Farm, Warren Road, Little Horwood,  
MK17 0PS Tel: 01908 506722

The views expressed in this magazine do not necessarily reflect those of the Editors or Whaddon Parish Council. Every effort is made to ensure accuracy, but the Editor does not accept liability for any errors within contributed material. The Editor's decision is final.

**For comments, queries, and articles**

Please contact

**wqeditor@whaddonbucks-pc.gov.uk**  
**to advertise in the Whaddon Quarterly**

Send your advertisement to the Editor as above.

**Want your photo on the front cover?**

Then send your entry for the next edition to: [wqeditor@whaddonbucks-pc.gov.uk](mailto:wqeditor@whaddonbucks-pc.gov.uk)

# Editor's Letter

## Welcome to the Autumn edition of The Whaddon Quarterly

I hope that you have all enjoyed any summer breaks that you may have taken over the past few months.

June was blazing, the warmest on record and I think most of us anticipated a long, hot summer. Alas, it wasn't to be as July became one of the wettest on record and August has been a mixed bag. But looking on the bright side, we all have green lawns instead of the dry, brown grass that we had this time last year, and we haven't needed to get the sprinklers out. I bet that there is plenty of juicy produce this year from the allotments, maybe the Church will benefit with lots of locally grown fruit and vegetables being donated for the Harvest festival auction in October?

As usual, there have been plenty of events over the past quarter to keep Whaddon entertained despite many people being away. A fundraising quiz was held at the Jubilee Hall in July where The PFJ were triumphant and will hopefully be back to try to retain their crown in the next Quiz in October.

Our neighbours in the village of Nash held their "Nashfest" music festival in July to which a large Whaddon contingent attended. Music was provided by various local bands including "Selby" from Whaddon. It was a fun day, with good music and good food, and luckily the rain held off.

The Chase choir held a summer concert, after which the reviews were unanimously excellent, and if you weren't there, you missed a treat. Florrie's coffee morning in August was extremely successful and a marvellous tribute to one of the village's much loved and much missed characters.

Whaddon is a busy village with fun and interesting activities and events to get involved with, should you wish to. Please see the back page with "Dates for your diary" to ensure that you do not miss a thing in the next quarter.

In this edition of the WQ, there is a further update on the Shenley Park Development. You will remember from past editions; the proposed development is large and will have a potentially significant impact on Whaddon village. Please read the articles in this edition and any leaflets that the WPC post through your doors to make sure that you stay informed.

This edition of the Quarterly is to be my penultimate one as Editor and the WPC are looking for a keen volunteer or volunteers to produce this magazine going forward. Please see page 30 for more details.

If you have something that you wish to share in our village magazine, or if you have an idea about what you'd like to see included, please contact me on [Wqeditor@Whaddonbuckspc.gov.uk](mailto:Wqeditor@Whaddonbuckspc.gov.uk). I am always grateful for suggestions and submissions of content.

The deadline for the Winter edition is **17<sup>th</sup> November** with publication planned within 7 days of that date.

Stay safe and enjoy the season of mist and mellow fruitfulness!

**Sharon**  
**The Editor**



## Whaddon Parish Council Chairman's Report

Sixty years ago, the Government decided to build a new town halfway between London and Birmingham, adjacent to good road and rail access from all directions. North Bucks was the area which fitted the bill and until the boundaries were announced, it was entirely possible that Whaddon could have been the town centre. As you know, the village was spared and still manages to retain its independence so far, but the threats not only remain, but increase all the time. For that reason, Whaddon Parish Council has an increasingly important role to ensure that we retain the village as we, the residents, want it.

It was a huge mistake, a few years ago, when Aylesbury Vale District Council decided to complete its own plan by allocating more than a thousand houses to the land between Milton Keynes and Whaddon. These will be administered, not by Milton Keynes but from Aylesbury. I think the name of Shenley Park has been coined by the developer and is not particularly relevant to the area.

The biggest immediate issue is traffic. We put up with large volumes of through traffic already both morning and evening and future residents of Shenley Park will exacerbate that hugely. The suggestion that an exit on to the A421 will resolve this is nonsense, particularly when another big development next to Newton Longville is also exiting on to the same road.

When all this is complete, Whaddon will have to make the momentous decision as to whether to become part of a much bigger parish or remain entirely separate but that is a long way off yet. What all this means is that your Parish Council has a vitally significant role to play in ensuring the future of Whaddon as the residents want it. We shall do our best and keep you informed as things happen. I look forward to seeing you at one of our meetings.

***Cllr Billy Stanier Chairman***  
**Whaddon Parish Council**

### Cheaper Heating Oil, anyone...?

You may not know it, but there is a buying syndicate for heating oil based in Whaddon and for nearby villages.

Operated on a not-for-profit basis, it is entirely free to join and can result in a saving of 4 - 5 pence per litre. Each month, members decide if they would like to add to a group order (500 litres minimum), and if they do, they email the person who runs the syndicate. The price for a bulk order is negotiated and the order is placed by the syndicate organiser. You then pay the oil company direct at the agreed price and your oil is delivered, usually within 10 days.

Interested? Please email [oil@northbucksos.co.uk](mailto:oil@northbucksos.co.uk) for more info.

# Clerk's Corner

## Helpful information from Whaddon Parish Council



### Grab an Allotment and Grow Your Own Veggies!

Rising prices! Environmental Concerns! Food security and quality! All good reasons to take on an allotment and grow your own. It's not too late to plant a few things this summer, like salad leaves, radishes, spinach and spring onions. And for later, winter cabbage and turnips; or go more exotic with chard, kohlrabi and chicory. The allotments now have an onsite water supply, great community spirit, and prices are incredibly cheap! Get in touch now for more info.

**Get your copy of Whaddon Quarterly by Email!** Reduce the Clutter! Keep a Digital Historical Archive! Reduce Costs! Save Time on Deliveries! Sign up NOW to get your copy of Whaddon Quarterly by email. Drop a quick request to [Clerk@Whaddonbucks-pc.gov.uk](mailto:Clerk@Whaddonbucks-pc.gov.uk) and you'll be added to the email list.

**Advertise your Business in our Wonderful Parish Magazine!** Whaddon is very lucky to have a top quality and very popular Parish Magazine, full of community news & events. And it is a wonderful chance for local businesses to showcase their products & services to a geographically defined and targeted audience. To take advantage of this wonderful opportunity, check out the rate card, or contact the Editor or Clerk.

### Sign up to get important information and updates by e-mail!

Send a short email to [clerk@whaddonbucks-pc.gov.uk](mailto:clerk@whaddonbucks-pc.gov.uk), asking to be added to the list. We promise absolutely you will NOT be 'spammed', and your details will NOT be passed on or used for any other purpose than for Council and/or Police matters.

**Date of Next Parish Council Meeting(s).** The next meeting(s) of Whaddon Parish Council takes place at 7.00pm on 14<sup>th</sup> September 2023, 9<sup>th</sup> November 2023, 11<sup>th</sup> January 2024, 14<sup>th</sup> March 2024, at The Chapel, Stock Lane, MK17 0LU. Meetings are generally every other month on 2nd Thursday, but please check the Village Notice Board on the bus stop to confirm these dates and the location, as these can be subject to change. Full details are also on the WPC website [www.whaddonbuckspc.org.uk](http://www.whaddonbuckspc.org.uk)

**All are welcome!**

### Whaddon Quarterly Advertising Rates and Publication Policy

#### General and Commercial Advertisers

Full Page – Black and white – four editions	£90
Full Page – Colour – four editions	£100
Half Page – Black and white - four editions	£52
Half Page – Colour – four editions	P.O.A.

Advertising fees are payable in advance on receipt of invoice. Interest may be charged on overdue accounts. BACS payments to **Unity Trust Bank: Account 20454254 Sort Code 60-83-01.**

#### Non-Commercial Local Advertisers

For locally based charitable and not-for-profit organisations publicising events for the benefit of the local community; insertion FOC, at the Editor's discretion, and subject to space.

#### Format and Submission

Full page – A5 size. Copy to be submitted in .docx, PDF or high resolution .jpg format.

Email content to [wqeditor@whaddonbucks-pc.gov.uk](mailto:wqeditor@whaddonbucks-pc.gov.uk)

#### Publication Dates and Copy Deadlines

Publication is four times per year in Spring, Summer, Autumn, and Winter.

Copy deadlines are available by contacting the Editor

Copy received after the deadline may be excluded, or if included, only on a best-effort basis at the discretion of the Editor.

#### Content Policy and Copyright

All material for publication in Whaddon Quarterly to be appropriate and suitable; and it may not contain any content that could be deemed offensive, discriminatory, or derogatory. Any submissions deemed not to meet this standard will be subject to edit or exclusion by the Editor. The Editor's decision is final in this regard. Content of Whaddon Quarterly is subject to Copyright and may not be used or reproduced without the Editor's permission.



## Jubilee Hall – Whaddon's Village Hall News and Upcoming events!

You can hire the hall for private events at competitive rates. Our chairs and tables can also be hired if you need some extra furniture for your private gatherings.

We have speakers to enable music to be played by hirers if required. And we have mood lighting that can be used upon request. Hall hire is £12 per hour for Whaddon residents; £18 per hour for non-residents, plus an additional cleaning charge for one-off bookings.

Please e-mail: [whaddonvillagehall@gmail.com](mailto:whaddonvillagehall@gmail.com) for more details.

Hire income alone is not enough to fund the running costs of the hall. Fundraising events are required to bridge the gap. That is why your support at our events is so gratefully received and very much appreciated.

In 2023, we have completed much-needed external work. We would now like to raise funds to repair and improve the flooring inside the hall. Please help us by supporting if you can.

### Since the last Whaddon Quarterly:

**Friday 7<sup>th</sup> July:** A successful, fun-filled Quiz Night, hosted by Guy Birch-Jones and Lou Hobbs. Hotly contested with the final spoils going to PFJ (right) who by pushing Crystal Methodists into second place, prevented them from achieving their third consecutive victory.



### FUTURE EVENTS - Please save the dates in your diaries:

**Sunday 10<sup>th</sup> September:** [Tabletop Sale 2-4pm. Tea and cake available.](#)

If you're having a clear out and would like to book a table, please contact **Anne 07737 204526** or **Alice 07901 732455** - £10 per table. Proceeds to St Mary's Church and Whaddon Jubilee Hall.



**Friday 13<sup>th</sup> October:** [Quiz night – Doors/Bar opens 7pm. Quiz starts 8pm.](#)

Come along to this popular village event and see if you can put PFJ in their place and take home the Brainiest in the Village title. Teams of up to 6 people. £4 per person entry fee payable in advance. There are limited tables so book yours early to avoid disappointment.

Please e-mail [whaddonvillagehall@gmail.com](mailto:whaddonvillagehall@gmail.com) to book your table.

**Saturday 28<sup>th</sup> October:** [Craft Fayre – Event open 2pm to 4pm.](#)

Come and enjoy Whaddon Jubilee Hall's Craft Fayre. Browse the local craft stalls and meet up with your friends and neighbours for cakes and a cuppa! Event runs from 2pm until 4pm.

**Friday 3<sup>rd</sup> November** : Italian-themed food and entertainment evening – Doors/Bar open 7pm. Food and entertainment follows shortly afterwards. Tickets are £25 each.

The food is Risotto (vegetarian option is available) followed by a delicious dessert. There is live entertainment followed by a disco until 11pm.

Tickets are limited and are selling fast. Following the incredible success of the Spanish evening held in February, this event is sure to sell out. Get your tickets now to avoid disappointment.



Please e-mail [whaddonvillagehall@gmail.com](mailto:whaddonvillagehall@gmail.com) to book your tickets and please state when purchasing tickets whether you need vegetarian and if you have any other dietary requirements/allergies.

**Wednesday 8<sup>th</sup> November:** Jubilee Hall Annual General Meeting. 7pm start.



We would love to see some new faces at our AGM in November. Come along if you would like to find out what the committee does, particularly if you are interested in getting involved, as the committee for the next year will be proposed and confirmed at the meeting. Any contribution, large or small, is welcome and highly appreciated.

We also have our “Happy Helpers” team who help whenever they can.

If you don’t want to commit to the committee work, then maybe Happy Helpers is right for you! Please read more about them in the “Meet the Jubilee Hall Committee” article in this edition of the WQ.

If you would like to find out more about the committee or the Happy Helpers before the AGM evening, please contact any of the existing members through the Jubilee Hall Facebook page or e-mail: [whaddonvillagehall@gmail.com](mailto:whaddonvillagehall@gmail.com).

**Saturday 2<sup>nd</sup> December:** Christmas tree Lighting-up ceremony followed by a festive village social evening with a bar and food van.

After the success of this event for the past 2 years, we are doing it all again!

This year, we also have a food van, The Pitstop Trailer, from which you can purchase delicious food to eat inside the hall or alfresco.

Times to be confirmed in the Winter edition of the Quarterly and on the Jubilee Hall noticeboard nearer the time. A festive social event for all the family.

Please come along and bring your friends too. For those new to the village, it is a great opportunity to meet the many lovely people living in our wonderfully inclusive and friendly community. And you’ll be helping to raise funds whilst having fun and catching up with friends and neighbours!

**POLL FOR FUTURE EVENTS** – The committee are planning events for 2024 but would like to know what the village want. There is a poll on the Whaddon Village Facebook Group, or you can e-mail us to let us know your preferences. Ideas so far are: Quiz Nights; Social evenings with karaoke; Themed food and music evenings; Social night with live music; Open Mic Night; Casino evening. Please let us know what you’d like to see at the Hall. Thank you.

Please keep an eye on the Jubilee Hall noticeboard for more details and updates. If you are on Facebook, please like our page “Whaddon Jubilee Hall”.

## **Jubilee Hall Committee – Get to know the committee members.**

### **Graham Hain (Chairman)**

I've lived in Whaddon for over 20 years. I enjoy the keen sense of community in the village through its support for the School, Church, Hall and Recreation Ground.

After 3 years on the Parish Council, I felt I could add more directly to the village by joining the Hall Committee. Recognising that the then Chair and Treasurer were shortly leaving the village, I 'jumped in with both feet' and stood for Chair.

Our focus for the past two years has been to protect the fabric of the building and improve the audio and lighting facilities to make the Hall more useable. This is work in progress, but we continue to make strides in what I hope the village thinks is the right direction.



### **Pierre Hibble (Treasurer)**

Wendy and I moved to the village with two young daughters in 1984 and have lived here since that date. Well, the family lived here, and I was more of a visitor until retirement in 2013 as I spent most of my career overseas. I was incredibly fortunate to visit most of the world and some amazing and some not so amazing locations. Travel led to such interesting telephone conversations as "Kirstin is fine, but you'll need a new car when you get back" and "Is that shooting?" (Sudan 1989). It also meant I took absolutely no responsibility for raising the girls, which was all down to Wendy, as was supervising the rebuilding of the bungalow, which was desperately in need of TLC when we moved in.

I took on the role of Hall Treasurer a couple of years ago. No altruistic motives: just that, being retired, I have the time, need to exercise the little grey cells and there is only so much golf you can play. It is amazing how many spreadsheets you can create, even when you do not really need one. Treasurer can be a frustrating position (do not mention TSB) but is an opportunity to meet more of the village and socialise. It never ceases to surprise me that friends in other villages do not have half the fun we have in Whaddon. They are, in fact, surprised or even jealous as to the events we stage. Just to plug the finances, the Hall funds are in good shape, but it is an old building and needs a lot of attention so do come along to events and spend money.



### **Marianna Beckwith (Bookings Officer)**

Not exactly Whaddon born and bred, but after 35 years, at least people no longer say, "Oh, you live in Mrs XYZ's house!" Both my boys have grown up here and have had many a birthday party at the Village Hall. The Hall is where some great Whaddon memories have been made for me over the years, so it's good to be a part of helping that to continue to happen for others.

I'm the one who usually responds to Facebook messages or emails asking to book the Hall for events. I can't remember how long I've been doing this, but it feels like quite a while: certainly, more than 5 years and possibly less than 10. That will have to be precise enough. I think it's important to have this "gathering space" available to the village to use, and I'm happy to be able to help in this quirky old building's maintenance in any way I can.



### **Sharon Bessell**

I'm in my 18<sup>th</sup> year of living in the village, and I've been part of the Village Hall committee for the past seven. Anyone who knows me well will be aware that I love being busy, I rarely sit still, and I have a low boredom threshold. This means I've always got some kind of project on the go, which fits around my busy and demanding full-time job.

One such project was getting more involved with the hall, although I didn't expect my enthusiasm to last this long! Events at the village hall were a way for me to meet people when we first moved here, and I joined the committee to help to ensure its future for as long as possible. The other committee members are all lovely people, and we have a lot of fun at our meetings and when we work together to make the magic happen!



## **Frederick Hayward**

In 2001, after living in Whaddon all my life. I decided I would join the Committee of the Village Hall. I have had lots of good times at the Hall, and I wanted to help and support the people who were doing such good work for our wonderful Hall. To my mind, it was, and still is, a good asset to our village.



## **Anne Tolfree**

I live at Laburnum Cottage with my husband James, Emily (16), Charlie (4) and our 3 dogs. We've lived in the village for 4 years now, and although we arrived by chance, I'm quite sure that I want to stay forever. I joined the committee as I wanted to meet other parents in the village, and to help the community have fun and socialise. It doesn't take up a lot of my time, and I enjoy being part of it. We're keen to hear ideas of events that you'd like to see happening in Whaddon and hope to see you at upcoming events soon.



## **Trevor Bennett**

I have lived in the village since 2017 but have had an association with Whaddon since 2015 when I met my wife – Lauren. I've been very fortunate to meet several villagers since then, but I wanted to meet people that I wouldn't ordinarily have met and contribute to the community spirit (and have some fun along the way) – so decided to join the Village Hall committee nearly two years ago.



## **Charlotte Calder**

Hello, my name is Charlotte. I've lived in Whaddon on and off for 30 years. I've had lots of fun and happy times in the Village Hall with family and friends. I just want to do my bit to help this continue. Thank you.



## **Deb Spinks**

Deb has been on the committee for over 20 years. A familiar and regular face at events, usually running the bar, accompanied by husband Ralph, Deb has decided to take a well-earned rest from committee duties and will be stepping down at the AGM in November, although she will join the "Happy Helpers" team instead – see below.

The committee would like to wholeheartedly thank Deb for her extremely valuable contribution over the years and her "bar manager" shoes will be difficult ones to fill.

## **The Annual General Meeting – Wednesday November 8<sup>th</sup> – 7pm**

Do you want to get more involved in what happens at the Village Hall? Are you good at fundraising? Do you enjoy meeting people and having fun? Do you want to contribute to the social scene in Whaddon? Do you want to lend a helping hand from time to time to the volunteers that keep the hall running? Would you like to become the new "bar manager"?

If your answer is Yes to any of the above, or you just want to find out a bit more about the work that the committee does, then please come along to the AGM in the village hall in November.

We are hoping to get some new committee members, with fresh ideas and to enhance the skillsets of the existing hard-working committee.

## **The Hall's Happy Helpers**

If you cannot commit the time to be on the committee (although the larger the committee, then the less time is needed from each member), then perhaps you'd like to join the "Hall's Happy Helpers". This is a group of volunteers that we ask, via a WhatsApp group, to help with various activities. For example, in 2022-23, members have helped to spring clean cupboards, clear out the loft spaces and sheds, weed and tidy the hardstanding, serve behind the bar at events and man the BBQ. Helping when available. All help, large or small, is greatly appreciated.

Big thanks to our existing HHH members for their valuable contribution to date: - Sid Vincent; Guy Birch-Jones; Gemma & Neil Geddes; Adam Stewart; David Porteous; Edita Cicenienė; Gregg Bushell; Lou Collin; Tiffany Draper; Lucy Stewart; Omri Tau and Verity Threlfall.

If you want to know more about any of these activities, please ask any current committee member and come along to the AGM in November.

# **SHENLEY PARK - SPD .... IMPORTANT DATES -** **AND UPDATE ON THE BUCKS COUNCIL (BC)** **CONSULTATION.**

Although there was a large and welcome response from residents in respect of the premature Crest Nicholson (CN) Outline Planning Application, **we must now turn our attention** to the promised - (and VALP policy required) - Bucks Council (BC) Supplementary Planning Document (SPD), which is probably more important, and should guide the CN planning application. Do not be surprised if CN have to amend their planning application later this year or early next, to 'fall in line' with the approved SPD document. If CN does make changes, then BC should re-consult everyone on the developer's proposed changes ..... So, there is still a long way to go yet!!

## **WHAT YOUR PARISH COUNCIL BELIEVES YOU SHOULD KNOW**

1. The full SPD document for consultation (83 pages full of plans, explanations and diagrams) is available 'online' by going to :-

<https://yourvoicebucks.citizenspace.com/planning/shenley-park-spd>

or:-

<https://buckinghamshire.oc2.uk/>

2. For those who prefer to read paper copies, WPC has secured from BC, 3 full copies of all the above. One set will be on permanent display in the village Hall (**NOT to be taken away**) and the other two copies can be loaned for 48 hours (or longer if no waiting requests) by emailing your request to your Parish Clerk Suzanne at:- [<clerk@whaddonbucks-pc.gov.uk>](mailto:clerk@whaddonbucks-pc.gov.uk)

3. Subject to BC final confirmation (not available as we go to press - because the decision may still be 'called in') the 6-week Public Consultation Period will run from:- **30th August until 11th October 2023.**

4. Again, but subject to confirmation, a **Drop-in** Exhibition will be held between **2.00pm until 8.00pm in Whaddon Village Hall, on Wednesday 6th September.** This exhibition will be attended by officers from the Planning Policy Team at BC with coverage from BC consultants: David Lock Associates. An officer from Integrated Transport Planning (ITP) should be there for some of the time too. Hopefully any questions from residents will be answered. But if not, or if the answers do not satisfy residents, WPC will try to take up the issues with BC following the session.

5. **WPC meets on Thursday 14th September, at 7.00pm** in the Stock Lane Chapel and both the CN Planning Application and the BC - SPD will be on the agenda for discussion. Please come along to raise any concerns that you might still have.

6. Despite the length and detail of the SPD, **it asks only 4 specific questions**, upon which the preferences of respondents are requested. Obviously, when responding you can comment on any points that concern you, but the 4 main issues and/or questions (according to BC and their consultants DLA) are replicated **in part** below:-

1. *The 'vision' for Shenley Park promotes designing the new development to enable people living in existing and new communities to interact and function harmoniously together.*

*The consultation on the SPD seeks to confirm that this is a shared vision.....maintaining the physical separation, and distinctive character of each place whilst enabling the use of existing and new facilities, amenities and services within the area as a whole.*

**WPC note:-** Most people choose a village for personal reasons ... but this 'vision' of 'living in harmony' has possibly been forced upon residents?

If this new interaction is accepted, then surely the vision is common sense!

2. *Despite the stopping up of Shenley Road (the SPD, as currently drawn by BC shows no vehicular access), BC state that there remains an option to maintain some degree of vehicular connectivity between Whaddon Village and Shenley Park.*

*The consultation seeks to establish if there is a preference for one of two options (drawings are shown in document), those being either 'no access' or 'access via a connection to the north south primary street through the development'.*

**WPC note:-** When evaluating the responses from the CN Outline Planning Application consultation, there was an almost unanimous 100% preference for 'no vehicular access along Shenley Road', and this should be maintained,- although alternative solutions may still come forward for future discussion.

3. *The Whaddon offset (buffer) is recommended to be designed as a shared landscaped space for informal recreation to encourage connectivity and integration. Given its rural context, is there a preference for the inclusion of an informal cricket pitch as part of encouraging this community integration as part of the Whaddon buffer. If a clear preference is expressed for the inclusion of an informal cricket pitch in this location, then the final SPD will reflect this preference.*

**WPC note:-** Councillors were very much against the 'informal cricket pitch' in the 'green gap' between Briary View and the development edge, for a number of logical reasons that might jeopardise the safe or proper use of this land, but what do residents think? VALP policy calls for a substantial, well designed and managed countryside buffer (not formal open space). The CN Illustrative Masterplan shows a semi-natural green space with meandering key pedestrian and cycle routes with different size play/exercise areas - perhaps reflecting the historic Whaddon chase - But what do Whaddon residents wish to see in this area - **if not** an informal cricket pitch?

4. *Access to outdoor sport and play facilities is important to create local opportunities for exercise and play for all ages to promote healthy lifestyles and inclusive communities, but their design should be commensurate with their setting and the character of the open space. Is there a preference for either a skate park or BMX track? ... and if there is then the final SPD will reflect this preference.*

**WPC note:-** Councillors have not discussed these ideas, as they have not been previously mentioned by BC, but the SPD states that such hard surfaced tracks could be appropriate within a linear park or rural edge location? So, what do Whaddon residents think? Or are there other sports provisions that might be more appropriate for '**all ages**', as stated in the question?

**As has been said many times before, it would be extremely helpful if Whaddon residents could make their views known during this very important 6-week public consultation (i.e., BEFORE 11th October). It may help BC in their final decision-making process - but if not, we can all say, "At least we tried"!!**

Please email WPC clerk as soon as possible at:- [clerk@whaddonbucks-pc.gov.uk](mailto:clerk@whaddonbucks-pc.gov.uk) if you want to borrow the documents.

## FURTHER NOTES ON THE 6th of SEPT. EXHIBITION

WHEN YOU ATTEND THE SPD EXHIBITION ON WEDNESDAY 6th SEPTEMBER, AND IN ADDITION TO CONSIDERING THE 4 SPECIFIC QUESTIONS ABOVE, YOU MAY WISH TO CONSIDER THE FOLLOWING :-

- WPC are told that this exhibition is to primarily discuss the BC proposals for Shenley Park. Whilst BC will have the CN and the MK MK2050 (Mass Rapid Transport) Plans available, they will not be on display, **WHY NOT?**
- In the competitive tender process to select a consultant to produce the SPD, a leading MK planning consultancy and highway company - both very closely involved in the preparation of the unadopted longer term MK 2050 plans - were chosen in preference to any other firm. **WHY?**
- Traffic and transport are perhaps the biggest concerns, but BC have said that they will not discuss the CN (Ardent) Traffic Assessment (TA), which WPC believes to be flawed by excluding traffic from the Salden Chase development and possibly other areas including the Western Expansion Area. **WHY NOT?**
- Will BC undertake a full and crucially **'independent'** expert examination of the CN (Ardent) TA, as it is unsafe to rely on developer 'predictions' and the possibly unreliable, out of date MK and BC 'traffic models? - **IF NOT WHY?**
- The Northern part of the site (above Shenley Road), likely to be called 'Briary Chase' in the New 'Vision for Shenley Park' includes a 'Highway Infrastructure Reserve' running from H6 (Childs Way) to Shenley Road (and heading directly to Coddimoor Lane), which appears to be an MKC policy being dictating to BC. This 'Strategic requirement' was not discussed during VALP, nor during the late 'Sustainability Appraisal' when selecting an alternative site to replace those sites unable to guarantee housing delivery in this Local Plan Period to 2033. **WHY NOT, AND WHAT IS THE CORRIDOR'S TRUE PURPOSE?**
- The western end of this Briary Chase 'Reserve Corridor' cuts through the open space designed to avoid coalescence between Whaddon village (Briary View) and the development edge. CN plans showed approx. 330m to the new housing edge (excluding sports fields), but this BC strategic reserve potentially reduces the gap to just 120m from Briary View. **IF NEEDED, WHY CAN'T THIS BE MOVED OUTSIDE THE OPEN SPACE PROVISION?**
- A further 'Reserve Highway Corridor' is shown running down the full extent of the western site boundary from the northern 'Briary Chase' area across Shenley Road, and down through 'Whaddon Chase' (the new 'Vision Statement' name for the southern half of the total site), all the way down to the A421. Neither 'Reserve Corridor' is shown on the CN Planning Application. **WHY NOT, AND WHAT IS THIS RESERVE ROAD'S FUTURE PURPOSE?**
- The inclusion of this western edge 'transport reserve' makes a mockery of the important VALP policy to *"provide a long-term defensible boundary to the western edge of MK"*, as it potentially opens up even further open countryside to the West for possible future development. In addition, two further 'reserve gaps' cut through what is shown as the green edge! **HOW LONG IS LONG TERM, AND WHERE IS THE DEFENSIBLE EDGE?**

- Many believe that this development should not be granted approval until the A421 has been dualled from at least Bottledump roundabout to the new access, or even beyond to the Whaddon roundabout. The CN Transport Assessment attempts to demonstrate that dualling is not required as a result of this development, but surely BC/MKC must prove beyond doubt that the already at capacity A421 can safely accept any further major developments joining into it. **WHY IS ANY PLANNING DECISION NOT BEING DELAYED UNTIL AFTER THE CURRENT A421 STUDY HAS REPORTED?**
- It is said that the estate Link Road from A421 to H6 Childs Way, being speed restricted, convoluted and running through both residential and commercial areas and with pedestrian and pelican crossings, will not achieve the BC/MKC estimate of 35% vehicles diverting off the A421, thereby reducing the known congestion. **IF THE 35% DIVERSION IS NOT ACHIEVED, HOW WILL THE UNACCEPTABLE RAT-RUNNING BE HELPED - AS PROMISED BY BC?**
- One of the four SPD questions supposes that *“existing and new communities interact and function harmoniously together”*. It is clear how the SPD planners expect new residents to benefit from the development, but - **HOW EXACTLY DO BC EXPECT WHADDON TO BENEFIT FROM SHENLEY PARK?**
- VALP policy states that *“the development (i.e., new residents) will use some facilities in Milton Keynes”*, whereas ‘common sense says that the ‘some’ will probably be ‘all’ - or at least the majority! This despite the fact that BC will collect all the council tax that presumably will not be shared with MKC, **HOW DO BC EXPECT THIS TO WORK IN REALITY, AND WILL MKC AND THEIR RESIDENTS ACCEPT THIS SEEMINGLY UNFAIR SITUATION?**
- VALP calls for provision of public transport to surrounding areas including Bletchley Station, yet we are told that the developers do not control and therefore cannot use the required H7 Chaffron Way corridor. **HOW WILL PUBLIC TRANSPORT BE PROVIDED TO WHADDON, AND WHEN?**
- BC SPD proposals show that the North Bucks Way Bridleway (part of the MK boundary walk) will be diverted under the new development ‘Link Road’ via a new underpass - which is a huge improvement on the CN plans which show an ‘at level’ Pelican Crossing, - but this BC solution does not begin to address the complete severing of this important and long established wildlife corridor, which places huge doubt on both the BC and MKC biodiversity and ecology credentials. **COULD A GREEN WILDLIFE BRIDGE SOLVE THIS REGRETTABLE AND UNACCEPTABLE PROBLEM?**
- It appears that WPC and resident opinion has been ignored on what should happen to the open space between Briary View and the development edge, and that the ‘informal cricket pitch’ idea has come from either the consultants or BC? If residents wish to achieve something different **HOW CAN THIS BE ACHIEVED AND WILL BC AND THEIR CONSULTANTS LISTEN TO ALTERNATIVE SUGGESTIONS FOR THIS IMPORTANT GREEN GAP?**

The list of questions is many and varied, but if you are not happy with the BC responses, please email WPC clerk at:- [<clerk@whaddonbucks-pc.gov.uk>](mailto:clerk@whaddonbucks-pc.gov.uk)

and any continuing resident concerns will be collated and hopefully pursued, whilst the lengthy ongoing negotiation process continues.



# NEIGHBOURHOOD WATCH WHADDON

YOUR LOCAL CO-ORDINATORS		
Graham Stewart	2 High Street	Tel: 01908 501973
Peter Beckwith	6 Old Manor Close	Tel: 01908 503194
Sally Green	Bellsbrook, Church Lane	Tel: Ex -directory
David MacIntyre	2a Vicarage Road	Tel: 01908 867836
Howard Jones	8 Ladymead	Tel: 01908 501871
Sally Telford	4a Stock Lane	Tel: 01908 336960
Pauline Winward	1 Whaddon Hall	Tel: 01908 502559

**This is a reminder to all residents to make sure they have removed valuables from their parked vehicles.**

Property, particularly if on display, can tempt opportunist criminals to break into your vehicle.

Common items stolen from parked cars include bags, wallets, mobiles, power tools and laptops. Please help yourself by not leaving valuables in your vehicle.

No-one wants the inconvenience of having to deal with insurance companies and having their premiums inflated as a result of a claim, not to mention the stress and inconvenience of losing personal items so please take a moment to double check you have removed everything.

If you see anyone acting suspiciously around parked vehicles make sure you call the police at the time that you see them.

**Try to get a description of them, which way they are travelling and details of any vehicle they are using. Call the police on the 24-hour number 101, or if a crime is happening at that time, dial on 999.**

If you suspect someone of being involved in this sort of crime, or think they are handling stolen property, please call the police on the 24 hour Police Enquiry Centre number 101.

Advice and information about preventing crime can be found on the [Thames Valley Police](#) website.

**Thank you – Keep Safe**

## NEIGHBOURHOOD WATCH

# Whaddon Women's Institute



The sun shone on us at our garden party in June and a good time was had by all. We had two visitors who were most welcome and a visitor of the 4-legged variety, Misty, who is staying with one of our members who is a volunteer with Medical Detection Dogs (see article below).

The tea and cake went down well too – well it is the WI!!

The weather has been so beautiful so we decided to go out to Howe Park Wood in July, where we enjoyed the shade provided by the ancient woodland and you might be surprised to hear that the tea and cake was good there too!



In August we will welcome a new speaker at the Jubilee Hall who will be auditioning with us, and we are looking forward to this storytelling with Trudie. We will be welcoming members from other WIs and visitors too. Once you are a W.I. member you can visit other WIs for their meetings just for £3 which opens a great opportunity for us all.

We are delighted to have one new member and another about to join us, so if you fancy coming along to meet our friendly group then you would be made most welcome.

We meet on the 1<sup>st</sup> Wednesday at 2.00 pm in varying locations. Visitors £3.

If you have any questions, please don't hesitate to contact me.

***Jill Aitken - Secretary***  
**01908 502781**

## **Do you love dogs and are you looking to do some volunteering?**

### **Then read on .....**

Medical Detection Dogs, based at Greenway Business Park, Great Horwood, and co-founded by Dr Claire Guest in 2008, trains and uses not only BioDetection dogs to detect diseases such as cancer, but also trains Medical Alert Assistance Dogs to save lives – yes exactly that. They are trained to tell their owner when they are about to become ill by detecting an odour for that particular disease on that person, for example, Type 1 diabetes. They can also be trained to bring medication and water to the owners that they might need. In the case of a horrible condition called PoTS for which there is currently no cure and where patients can faint many times throughout the day, the dogs can alert them when they are about to become ill, again through an odour, which gives them time to lie on the ground.

It is quite astonishing that a dog can do be trained to do this and that the charity realised that this is possible.

Although I had heard of Medical Detection Dogs, it was a chance conversation with a friend who is already a volunteer that inspired us to get in touch with them towards the end of 2022 to ask about volunteering by offering holiday cover to help with the care of their dogs in our home.

This process was very straightforward and consisted of completing an application form, a visit to the centre to meet Claire Baker, the volunteer manager, who gave us a short talk on this wonderful charity, a home and garden check completed by a very enthusiastic Spaniel (and her trainer) together with supplying the names of a few referees. Having passed all the above, we were in!

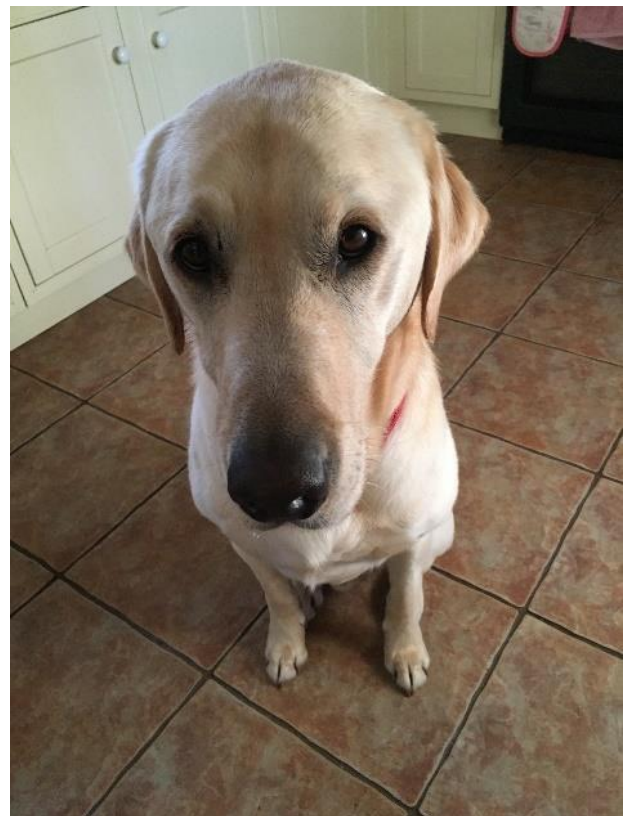
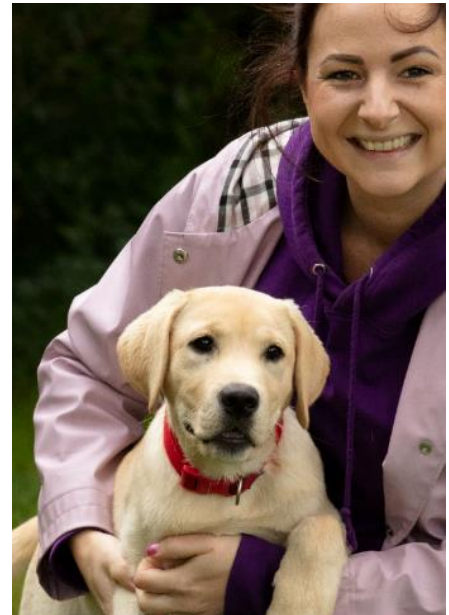
It wasn't long before the first dog, another little black Spaniel, appeared in our lives for a short time. We had a thorough briefing about him when we collected him at the centre and arrived back with this information in a folder, along with his own bed and toys and plenty of food (for him – not us!). The folder also contained telephone numbers should we need any advice, 24 hrs a day. What a joy to start with such a waggy, wriggly little boy and we were a little sad to have to hand him back when his visit came to an end, but such was the agreement!

Not long after, our second dog appeared: a very laid-back Golden Labrador who very quickly got us eating out of his paws. His only problem was that he snored and tended to jump in the bed and give me a wash at 5 o'clock in the morning!! He then returned to spend some time with us over Christmas and has visited one more time since.

We had a short visit from a gorgeous fox red Labrador who was obsessed with his tennis balls and found it difficult to pass a tree without looking for and barking at non-existent squirrels and a black Labrador who was also a lovely happy boy.

Our next visitor was another slightly nervous black Labrador who needed to spend some time with us before he was brave enough to come and stay. He too settled down so well on his first visit, that when he came back for his second visit he shot through the door with such enthusiasm and was so delighted to see us and then had to race into the garden to check if the tennis ball was still where he had left it. It was!

Our current visitor as I am writing this is a very big golden Labrador who is so pleased to see us, even if we've been out of sight for a short time, that he wrinkles up his nose and smiles while his tail doesn't stop wagging.



# News from Whaddon's Chase Choir

Whaddon certainly is a very musical village! Those of you who regularly attend events in the Village Hall, Church and Chapel, will, I'm sure, agree that we are very lucky to have such a wide variety of talent in our lovely community, and beyond.



In July, Whaddon's Chase Choir was excited to bring you a Summer Concert, with special guests joining us to share their own music with us. This year, we were raising money for Brain Tumour Research. We usually choose a couple of local charities, but one of our lovely members was diagnosed with a brain tumour earlier this year, so we unanimously decided to support her by choosing this charity.

We were so happy to have had a full-to-bursting hall, so thank you to everyone who came along to support us. We hope you enjoyed our varied programme, from Les Mis to Mozart, and we know that the solo performances from our very own Musical Director Rob and our ridiculously talented accompanist, Jeffery went down a storm. We must also mention the wonderful Champagne Flutes, who delighted with their two sets during what was a joyful, enthusiastic and thoroughly sociable evening. The total raised for Brain Tumour Research was £650, which is just wonderful!

We know that there's musical talent out there in our lovely village, and being able to share it and make people smile is such a privilege and such good fun. We're always looking for new members, so if our enjoyment in performing inspired you, please get in touch. We start back again on Monday 11 September at 7.30pm. No auditions, no need to be able to read music, just come for the fun of it!

**To find out more, contact Marianna on 01908 503194**

~~~~~

## Evelyn Jaworska

I have fond memories of the ever-cheerful Evelyn, not least because of the times I spent talking to her, as she opened the pages of history of war-time life in Whaddon. Evelyn's recollections helped me compile article upon article for the *Whaddon Quarterly*.

Not only were Evelyn's memories impeccable, but she had a store of photographs of days gone by. I used many of these.

Whenever I had a question, the first person I turned to would be Evelyn. For example, I would ask: "Evelyn, what was the name of the village policeman in WW2?" This would set in motion a string of facts; sometimes too many for me to jot down in my notebook. So much so, I would have to retrace my steps another day to collect the vital points I'd missed.

I, for one, will miss knocking at her door, partly opening it and saying: "Hello Evelyn. It's John Mortimer here." "Come in, John," she would reply.

I'll miss you, Evelyn.

**John Mortimer**

**Former WQ Editor and Whaddon resident.**



Helen, Trudy and Roger wish to thank all relatives, friends and neighbours for all their kind cards, prayers, messages of sympathy and generous donations following the death of their Mum, Evelyn Jaworska. Special thanks to Blessing Care and Ward 16 at MK Hospital; also, to Melanie and Shaun of Country Funerals, who were so caring and sympathetic in all the funeral arrangements.



# News from St Mary's Church

Hello everyone, in Whaddon, or further afield,

The Summer Holidays are here, and boy oh boy, how the weather is playing tricks on us! Whaddon residents, however, remain undaunted and true to form, adopt the “carry on regardless” attitude we know and love! On the first Saturday in August, I walked up to the church in pouring rain and became aware of gales of laughter from a group by the gate in Church Hill. It was Joyce Adams, with her daughter and son-in-law, who were struggling to pull her, in her wheelchair, up the gravel path and into the church for Florrie's Coffee Morning. It was wet (very!) and windy, Joyce was well wrapped up, however, radiant beneath a big brolly that kept getting in the way, and her ‘drivers’ were determined to overcome, and get her safely into the church. Ann Bennett's freshly made sausage rolls were the spur, as well as supporting a Whaddon tradition that has endured for years. Well, amid much laughter, and totally ignoring the inclement conditions, overcome they did .... as did so many other lovely folk.



Florrie's Coffee Morning is such a wonderful tradition, and we were delighted to welcome so many people, to share memories of her and the happy times we had chatting, drinking coffee and eating cake in her garden ... and to chat to each other, drink coffee and eat cake, again! Grateful thanks go to absolutely everyone involved: those who baked and organised everything and those who came, bought, ate, drank and chatted. The church was buzzing, there was such a happy atmosphere, and it seemed as if no one really wanted to go home. A significant sum of money, £383.10 was raised too, for which we are extremely grateful. What joy it is to have written this – it's great that the church is here, simply because of the beautiful building and landmark that it is, and because it can provide a happy meeting place for village occasions, both spiritual and secular. Please watch out for some important information about how we can continue to keep it open and thriving.

A more sombre occasion took place in July, when we said farewell, at her funeral, to Evelyn Jaworska - beautiful Evelyn, who was born in Whaddon and lived here all her life. Again, the church was full, and we were reminded of events in her ninety-two years in the village as Roger read the family's tribute to her. Evelyn was a regular church goer, and supported St Mary's in many ways, serving on the PCC and representing the church on the village hall committee for years. We are hugely grateful to her family for suggesting that donations be made for “her beloved church” and thank everyone who came to remember her, for their incredible generosity in this respect.

On now to future events: there will be an **important meeting in the Jubilee Hall** on 13<sup>th</sup> September **at 7.30pm to look at ways you can support St Mary's so that it remains open and active**. Please read all about it in the article included in this month's Whaddon Quarterly.

The **Harvest Festival Service** will be held on Sunday 15<sup>th</sup> October at 10.30am We invite everyone to come and participate, along with gifts of produce if possible, and the **Harvest Supper** will be held in the Jubilee Hall the following evening, Monday 16<sup>th</sup> October at 7.30pm.

Our **Christmas Fayre** will be held on a Sunday this year, just to be different! It's scheduled for 26<sup>th</sup> November at 2pm. We will be distributing flyers around the village in plenty of time so that you'll remember these dates, however, you may like to put them in your diaries now!

I wish you all a happy late summer, and hope that the sun will shine for at least some of the remaining days of the summer holidays.

Daphne Willis,  
Church Warden, St Mary's, Whaddon

## St Mary's Church, Whaddon – Services in September and October 2023

*Everyone is most welcome to all of our services.*

|                                  |         |                                                                                  |
|----------------------------------|---------|----------------------------------------------------------------------------------|
| Sunday 3 <sup>rd</sup> Sept      | 3.30pm  | Forest Church                                                                    |
| Sunday 10 <sup>th</sup> Sept     | 10.30am | Holy Communion                                                                   |
| Sunday 17 <sup>th</sup> Sept     | 10.30am | Table Talk in the Whaddon Chapel                                                 |
| Sunday 24 <sup>th</sup> Sept     | 9.00am  | Short Traditional Service of Holy Communion                                      |
| Sunday 1 <sup>st</sup> October   | 3.30pm  | Forest Church                                                                    |
| Sunday 8 <sup>th</sup> October   | 10.30am | Holy Communion                                                                   |
| Sunday 15 <sup>th</sup> October  | 10.30am | Harvest Festival                                                                 |
| Sunday 22 <sup>nd</sup> October  | 9.00am  | Traditional Service of Holy Communion                                            |
| Sunday 29 <sup>th</sup> October  | 11.00am | Benefice Service at Nash followed by Benefice Lunch in all the Nash Village Hall |
| Sunday 5 <sup>th</sup> November  | 4.00pm  | Memorial Service of Remembrance and Thanksgiving                                 |
| Sunday 12 <sup>th</sup> November | 10.50am | Remembrance Sunday Service starting at War Memorial                              |
| Sunday 19 <sup>th</sup> November | 10.30am | Table Talk in the Whaddon Chapel                                                 |
| Sunday 26 <sup>th</sup> November | 9.00am  | Traditional Service of Holy Communion                                            |

# Saving Whaddon Church

## Emergency Meeting

Whaddon Church is experiencing significant challenges which leave it at risk of **closing!**

We have therefore scheduled an Emergency Meeting for **Wednesday 13th September at 7.30pm**

in the Jubilee Hall, which we hope as many people as possible will attend.

The meeting will be an opportunity for you to hear more about the challenges the church faces, to ask questions, consider solutions and to provide your thoughts and feedback on the future of our beautiful St. Mary's church.

So, whatever the church means to you: whether you are a regular church attendee; only attend certain services (e.g., Christmas, Weddings, Funerals); have little or no faith but appreciate our historic 12th century church; have family or friends buried in the churchyard; or just take the opportunity to walk through the churchyard, please take the time to come to the meeting.

Your support is much appreciated (tea and coffee will be served).

# Reflections from the Rectory

BY REVEREND JACQUELINE DOVE

I returned from two weeks in South Africa, where we celebrated my mother's 80<sup>th</sup> birthday and my parents 60<sup>th</sup> Wedding Anniversary, to find our garden had gone wild in our absence. Well, strictly speaking, I should say wilder as our gardening style embraces going wild. However, it feels like a tipping point has been reached in our absence and we have now tipped over into a fraction too much foliage. I can sense myself getting stressed rather than soothed by our 'English Country Garden' despite the multitude of butterflies and bees.

I'm wondering if my desire to exert more control over our garden has something to do with my lack of control with regard to my parent's welfare back in South Africa, where both parents have heart conditions and varying degrees of dementia. They need me and I can't be there for them which is hard to accept. This feeling of powerlessness was not helped by the fact they had a 48hr power cut the day we left which meant that, with the removal of the internet, we were even more cut off from each other. In the first WhatsApp audio message I received from my mother once the power was restored, she said, "I have been totally cut off from the entire world. I have learned to just rest in God.... I have had a wonderful, amazing time opening my presents, I can't tell you what I've got.....God gives a little substitute; you've gone, and I've got lovely presents to comfort me."

My mother and I have not always had an easy relationship. As a child and teenager, I was scared of her erratic rage, and I found her eccentric dress sense and unconventional social skills deeply embarrassing. There was, at times, definitely a 'fraction too much friction' between us. I could view our relationship as I can view our garden: a bit of a mess full of nettles and thistles. But that would be to miss out on noticing the multitude of 'butterflies and bees'. Each WhatsApp message feels like a precious gift, even when it's a rather rambling shopping list (thanks to technology I do her weekly shop on-line). In our last conversation over brunch, before we flew home, my mother talked about the gift of grace that keeps her afloat, how she has faith that God will help her through this next difficult stage as my father's dementia worsens. Thinking I might have some Vicar wisdom to impart, I commented on the need to know when to rely on true grit and when to rely on grace. She replied that it takes true grit to cling onto grace with all you have. So may the grace of our Lord Jesus Christ, the love of God and the fellowship of the Holy Spirit be with you all this summer.

ST. MARY'S CHURCH



**PLEASE HELP US SAVE OUR CHURCH**

You are invited to an important meeting to look at various ways you can help make sure St Mary's church remains an integral part of Whaddon Village.

**WHEN: Wednesday the 13<sup>th</sup> September**  
**7.30pm**

**WHERE: Jubilee Village Hall**

# **SHENLEY PARK, WHADDON**

## **PLANNING UPDATE & IMPORTANT DIARY DATES.**

### **CREST NICHOLSON (CN) PLANNING APPLICATION TO:-**

**BUCKINGHAMSHIRE COUNCIL (BC), PLANNING REF : 23/02180/AOP**

**MILTON KEYNES COUNCIL (MKC), PLANNING REF : 23/01610/OUT**

The closing deadline for making comments to BC ended at midnight on 2nd September, and some 200 objections - and climbing - were registered at the time of writing (28th Aug), from both Whaddon and Milton Keynes residents. These should - in the words of BC - help the appointed Case Officer *"inform her early assessment"* of the planning application.

It is hoped that many residents will have also copied their responses to MKC - (see App. ref. above - **before their later closing date of 8th Sept.**), because that council must approve the 'access' from H6 Childs Way (and possibly the public transport corridor from H7 Chaffron Way) as both these access roads fall within the MKC administrative district, as opposed to Buckinghamshire.

Despite the BC closing deadline having passed, WPC have negotiated an extension of time, in order that the application can be properly discussed at the next Parish meeting, and this will occur on **Thursday 14th September at 7.00pm in the Chapel, Stock Lane.** Please come along and ask important questions .... Especially if you do not receive satisfactory answers from BC officers at the Village SPD meeting in the preceding week -**(see below and separate article on the SPD).**

As reported before, the CN planning application - whilst very important - is not, by far, the end of the story, because the following stages are yet to occur:-

1. BC are holding a Special Public Meeting on **Wednesday 6th Sept. in the Village Hall, between 2.00pm and 8.00pm** to display plans and answer questions about the Supplementary Planning Document (SPD) that Local Plan Policy dictates should guide any planning application for Shenley Park. **Every resident should attend** this meeting, if possible, because the BC document contains different proposals to those already submitted by CN, and BC needs to know the village's response to these various changes, especially on the highway, connectivity and landscape issues.

2. **A 6-week Public Consultation on the SPD will run between 30th. August until 11th October.** Whaddon residents, and indeed any interested party, will be encouraged to make comments on the BC proposals for Shenley Park. At the end of this period, all responses will be considered by BC and changes are likely to be made to the current CN planning application, depending upon BC's examination of the consultation responses and outcome, and CN's willingness to incorporate them. In an ideal world, once the SPD document is finally adopted CN should 'revise' their planning application to accord with BC's SPD ..... but CN's premature application already (prior to the SPD production) suggests that they may not wait for formal adoption, but simply 'be guided' by the initial BC, SPD plans. This is because the final SPD adoption may not occur until early 2024 (depending on whether any changes have to be made?) - and CN - as BC suggests - *"may have commercial considerations at play in their decision making"*, especially with regards to timing?

3. Almost certainly any significant changes that CN decides to comply with (and they have indicated their willingness to do so) will have to be re-consulted upon .... So, residents will have a further opportunity to comment at that time. Your Parish Council will endeavour to let everyone know when and if this occurs, .... Although BC should contact all initial respondents to the 23/02180/AOP Outline Planning Application, advising them of the changes, and asking if they wish to comment again.

4. Even this is not the end of the story, as there is no telling what other matters may crop up in the meantime, or thereafter, resulting in changes and possible additional consultation - for instance the CN Traffic Assessment(TA) - we are told - may be seriously flawed, and if this were to be the case then traffic, highway and connectivity issues may need further consideration, including the supply of further traffic data, leading to yet another consultation?

**NOTE REGARDING CONSULTATION RESPONSES:-** EVEN CONSIDERING EVERYTHING ABOVE, BC HAVE A DUTY TO CONSIDER ALL PROPERLY MADE 'RELEVANT' AND 'MATERIAL' PLANNING COMMENTS RIGHT UP UNTIL THE DATE THE FINAL DETERMINATION IS MADE, AT A PLANNING COMMITTEE - BUT THE EARLIER THE BETTER, HENCE THEIR INITIAL DEADLINE.

## **WHADDON PLANNING SNIPPETS**

As this copy goes to press, these are the latest updates on old and new planning applications. Full details of these and other recent applications can be viewed on the Buckinghamshire Council planning web page at :-

<https://publicaccess.aylesburyvaldc.gov.uk/online-applications/>

Just follow the instructions and enter the appropriate planning application number, before selecting the documents that you wish to inspect.

### **CURRENT LOCAL PLANNING APPLICATIONS.**

**23/02180/AOP** - Land at Shenley Park Whaddon. Outline Planning Application with all matters reserved except for 'access', - for 1265 dwellings, mixed use local centre, care home, primary school, Link Road, etc. etc. And :-

**23/01610/OUT** - Land at Shenley Park Whaddon. An identical Outline Planning Application has been made to Milton Keynes Council because the H6 Childs Way (and possibly the H7 Chaffron Way) accesses fall within their administrative area. The main site is all in Buckinghamshire and falls wholly in Whaddon parish.

These are complex and contentious applications, which must eventually be decided by the Planning Committee Elected Members, as opposed to being 'delegated' for officer approval. For both the above, please refer to the two separate articles 'Shenley Park Planning application/SPD' elsewhere in this edition.

**23/01969/APP** - Householder application for single storey front extension, wood burner, roof windows and internal modifications - Saddlers Lodge, 2 Whaddon Hall Mews, High Street, Whaddon.

No decision as of 23 August. Nothing posted on BC planning website since 1st Aug.

**23/01978/APP** - Resurface farm track - Land at Stratford Road, Whaddon, leading to The Oaks Farm complex.

Planning permission GRANTED on 24 August, with standard conditions.

**23/01975/AGN** - Erection of agricultural farm track - Land at Stratford Road Whaddon, leading to The Oaks Farm complex.

29th July decision : Your application has been considered and it has been decided not to seek further details of the proposal. You are therefore at liberty to carry out the proposed works in accordance with the details submitted.

**22/00221/APP** - Temporary siting of childcare nursery, enclosed outdoor play space and associated infrastructure - Thrift Farm Bletchley Road, Whaddon. And :-

**21/04926/APP** - Demolition of existing greenhouses. Erection of a childcare nursery, enclosed outdoor play space, landscaping and associated infrastructure. - Thrift Farm, Bletchley Road, Whaddon.

Nothing posted on the BC planning website since the WPC response on 10th Oct.

A final **decision** on both applications is still **awaited**.

# Teas on Tuesdays

We need volunteers to help run **Teas on Tuesdays** at the Jubilee Hall.

From 2012-2020, the Jubilee Hall hosted *Teas on Tuesdays* from 14:30 – 16:00. [The Post Office is open from 14:00 – 16:00 on most Tuesdays. The school day ends at 15:00.] *Teas* were suspended during the Covid-19 lockdown.



I thank Sue White and Margaret Barrie, who ran *Teas*, until they retired during Covid. Whaddon seeks successors who can make a cup of tea or coffee and could buy biscuits or, ideally, bake a cake or a quiche. Your expenses would be fully reimbursed.

If you could spend 2½ hours, one or two Tuesdays per month, chatting to villagers while drinking your tea or coffee, then please phone or email me.

Please provide your name, phone number and email address to me Kieren Beasley on [kieren.beasley@gmail.com](mailto:kieren.beasley@gmail.com) or phone/text me on 07434 893320

Sadly, if we are unable to get any volunteers, then this popular Whaddon tradition will cease. So please volunteer. It's fun.

*Teas* appointed me *Honorary Director of Corporate Communications and Head of Marketing, Advertising & Publicity*, but they did not train me to make coffee. So, ask an expert:-

Sue White 01908 501987 [j588white@btinternet.com](mailto:j588white@btinternet.com).  
or Margaret Barrie 01908 502564 [mbarrie@btinternet.com](mailto:mbarrie@btinternet.com).

~~~~~

## Hello from St Mary's Church's Merry Mowers



**Keep dogs  
on leads**



**Please pick up  
after your dog**

Our churchyard looks lovely, doesn't it? The eight of us are happy to volunteer our time to keep it looking good, so everyone can enjoy it: to visit their loved ones, pay their respects, or simply appreciate the beautiful surroundings.

Please help us to maintain the churchyard by being careful when you walk your dogs through. Mowing the grass is one thing. Negotiating extra "obstacles" makes it unpleasant and above all, it's very disrespectful to the memory of those resting there.

Hope to see you for a chat sometime if you're passing through. With greetings from all the Merry Mowers!

# Table Top Sale



## Whaddon Jubilee Hall

Sunday 10<sup>th</sup> September - 2 til 4pm

Tea and cake will be served!

If you're having a clear out and would like to book a table please  
contact Anne 07737 204526 or  
Alice 07901 732455 - £10 per table

Proceeds to St Mary's Church and Whaddon Jubilee Hall

## How Miss Eileen became Lady Cruise – Part 2

**Last time, we met the twice-widowed Maude Wotherspoon and her daughter, the golf-loving Miss Eileen Greenlees, as well as ophthalmic surgeon, Sir Richard Cruise. Here we find out what happened next. By JOHN MORTIMER**

### **Many were rich and powerful aristocrats**

When immersed in sport, Sir Richard's assured presence in the saddle conjured up excitement amongst onlookers as he embraced the thrills – and the spills – of foxhunting and steeplechasing. He found his visits to Whaddon's countryside transforming; a much welcome relief from pressures imposed by a stressful working life at the highest level. At Whaddon, he could truly relax.

Spectators from miles around would flock to events, there to observe and admire one notable rider, the seemingly fearless, unrelenting, high-profile, almost indestructible horseman who occasionally fell heavily – a humbling experience for a knight, if ever there was one – yet always survived. A latter-day (Sir) Lewis Hamilton.

A measure of the level of power vested in those enjoying the Whaddon Chase Hunt is captured, amazingly reflected in Cecil Aldin's 1925 painting (below). Available as a limited edition, it depicts the hunt in full flight, arrogant in its use of the countryside and complete with hounds, some of which even had names!

Derek White informs me that tradition has it that the pack would comprise 16½ 'couples' – that is, 33 hounds – to be kept in check by the Whip at the front backed up by the Huntsman in the middle to ensure there were no stragglers.



And, make no mistake, it was the Whaddon Chase Hunt that attracted 'the great and the good' to make the journey from London to Buckinghamshire; the Hunt well and truly put this village on the map.

The 82 participants, including 20 women, are recorded on the back of the painting; the list includes: Lord Dalmeny<sup>1</sup>, MFH; HRH the Prince of Wales, Will Bodington (Huntsman), Captain W Lambton, Major Leigh Stedall, The Earl of Orkney, Lady Victoria Bullock, Sir Arthur Cory Wright, Captain B M Hudson, Mrs Leopold de Rothschild, Anthony M. Rothschild, Lord Carlisle, The Hon Lavinia Strutt, Air Vice-Marshal Lambe, The Hon Helen Primrose, Lord Portarlington, Captain Curnick, Captain Gore Langton, Earl of Carnarvon, Major Beauchamp, W Wyatt (Whip) and Lady Leon. As you can see, any of these were the rich and powerful aristocrats of the times. Hobnobs!

Even hounds in the painting enjoyed names; in particular: Waspish; Tapster; Gamish; Susan; Lawyer; Peaceful; Laudable and Ramrod. However, while some hounds enjoyed names it was, perhaps, best not to ask what happened to hounds once they fell ill, or reached the end of their useful, working lives.

The primary role of the Whip – a Whip could be male or female – would be to keep the pack together and round up missing hounds. Even when hounds were hunting, the whipper-in could be some distance away collecting up stray hounds. When the pack needed to be stopped or called off, the whipper-in would be with the huntsman helping him/her to stop the hounds.

And who else appeared in that intriguing painting? None other, of course, but Sir Richard Cruise (No 33), shown **right**. In this context, it would be so easy to cast Sir Richard as one important member of a fast social set.

And, looking down that list of 82 names it is understandable too how the Whaddon Chase Hunt *could* provide an opportunity for budding romances to flourish.



### Encountered several accidents

Over the years spent on horseback, however, Sir Richard fell victim to numerous accidents in the hunting field. A headline in the *Weekly Dispatch (London)* of Sunday, 9<sup>th</sup> November 1924 gives a flavour of what was to follow: "Royal oculist hurt; thrown when out hunting. Rolled on."

The report continued: "Sir Richard Cruise, surgeon oculist to the King, was thrown while hunting with the Whaddon Chase yesterday. His horse rolled on him, and, at first, it was feared he was seriously injured. But it was ascertained that night at his residence in Wimpole Street an X-ray examination revealed that though his ribs were bruised, no bones were broken."

The report added: "Hounds were in full cry between Wicken Wood and Nash when followers encountered posts and rails. It was in jumping this obstacle that Sir Richard's horse came down. Sir Richard was taken in a doctor's motorcar to Leighton Buzzard and then conveyed by train to London."

"The accident to Sir Richard Cruise occurred during a remarkable run lasting one hour 20 minutes. The hounds 'found' a fox in Carrington Gorse, which took the followers through Beachampton and Thornton and over the river into Grafton country, where the fox was lost."

In April 1927, Sir Richard was thrown and injured. He had won the previous race on *War Gratuity*. On inquiry at Sir Richard's London address, those concerned were informed that, although shaken and bruised, and was unconscious for a short time, he "happily sustained no serious injury" and was "now at his residence at Winslow."

### Nasty accident for Gawcott man

But earlier, in April 1925, an accident of another kind occurred. A serious road accident happened when Sir Richard, motoring on the Brackley Road towards Buckingham at the Radclive cross-roads, collided with a motorcycle ridden by farmer Mr. Arthur Watts, of Gawcott, who was crossing the main road on his way to Gawcott from Chackmore.

The *Buckingham Advertiser and Free Press* of Saturday, 25<sup>th</sup> April 1925, reported: "Mr. Watts was taken in the St John Ambulance to the Cottage Hospital at Buckingham where it was found he had sustained an extensive compound fracture of the right leg, the bone protruding the skin."

"Sir Richard was unhurt, and motored to the hospital, where he remained for some time. Interviewed by a representative of the *Buckingham Advertiser*, Mr W T Watts said that his brother was now in the Radcliffe Infirmary, Oxford, where he was very comfortable and was doing as well as could be expected."

The report continued: "His brother was not at all clear as to how the accident had happened, but he had said that he saw the motor approaching and he felt it hit his leg and, probably, the footrest. The motorcycle was smashed almost to scrap iron."

However, Sir Richard was an all-round sportsman. He played cricket and took golf seriously. Indeed, his theories on putting helped Lady Cruise (**right**) to reach the semi-final of the English women's golf championship at Cooden Beach one year.

A writer in *The Sketch* weekly magazine of Wednesday, 16<sup>th</sup> August 1922 noted Sir Richard was a "very enchanting kind of putter".



Glamorous in fur? Lady Margery Barbara Cruise photographed by Bassano Ltd. in December 1922.

*The writer added: "I know of no system more engaging than that which Sir Richard Cruise described to me during a French open amateur championship in which he was competing at Versailles. It was a system too which certainly produced astonishingly good results, so far as he was concerned." And so over those and later years the rural scene remained unchanged and unchanging. Across Great Britain, from Cornwall to Scotland, anyone with a keen interest in foxhunting and steeplechasing could not escape the name of Sir Richard Cruise, a man seemingly of relentless zeal, both on and off horses. At times, he may have asked himself, will my gifts dim? Seemingly, they did not. Yes, at times there had been thin pickings, but likewise he had been victorious.*

### **Dark clouds gather over Whaddon Hall**

But, against the background of the new member of the Chase Hunt, dark clouds had gathered over the life of the Chase Hunt's Colonel Selby Lowndes.

On Wednesday 7<sup>th</sup> February 1923 *The Sketch* reported a dispute with Whaddon Chase Hunt. It began when Colonel Selby Lowndes was removed from office while serving with the services abroad. After the war a second pack was formed, with Lord Dalmeny as Master, and Colonel Selby Lowndes and his pack were warned off. The Masters of Foxhounds Association called on both Masters to resign while the second pack must cease hunting. The Earl of Orkney was elected Master of the original pack but then he resigned, and the original dispute was re-opened. In the event, Lord Dalmeny was proposed and in favour of Colonel Selby Lowndes. And a vote of members was duly carried at the Oddfellows Hall, Winslow on 9<sup>th</sup> February 1923.

But there were other dark clouds. More personal dark clouds. The Colonel's wife of more than 30 years, Florence, had become so seriously ill that her prognosis was grim. Florence finally succumbed to chronic nephritis, arteriosclerosis, cerebral haemorrhage, and uraemia in February 1923. She was only 51. They had married in April 1887 at fashionable St George's Church in Hanover Square, London.

The Colonel arranged Florence's grand funeral at St Mary's Church, Whaddon. The *Northampton Chronicle and Echo* of Thursday, 15<sup>th</sup> February 1923 noted the officiating clergy on that Wednesday were Vicar of Whaddon, Rev W E Dixon, and Rev L Last, Rector of Stony Stratford. Many Selby Lowndes family mourners attended, led by the Colonel. Other mourners included Major Otway Mayne, Chief Constable of Buckinghamshire.

For the fully choral service, Mrs J M Missenden played the church's organ while, as the coffin of polished oak left the church, the choir sang *Nunc Dimittis*. The coffin's simple inscription read: Florence Selby Lowndes, born 16<sup>th</sup> October 1871, died 9<sup>th</sup> February 1923, aged 51."

Florence's many activities included Deputy Master of Whaddon Chase Hunt in her husband's absence. Press coverage of the funeral proved mostly local to Buckinghamshire and Northamptonshire. However, within the wider 'horsey' fraternity, news of Florence's death must have spread quickly.

Meanwhile, across the border, in Scotland, as both of Maude's husbands had been steeped in foxhunting and steeplechasing, it was perhaps only inevitable the middle-aged widow heard of happenings at Whaddon. Subsequently, events were to move apace.



**Whaddon Hall's staircase with just some of the many paintings**

So quickly indeed did events progress that, within a year, romance blossomed between widow Maude and widower Colonel Selby Lowndes. Before long, Maude



**Whaddon Hall's beautiful interiors**

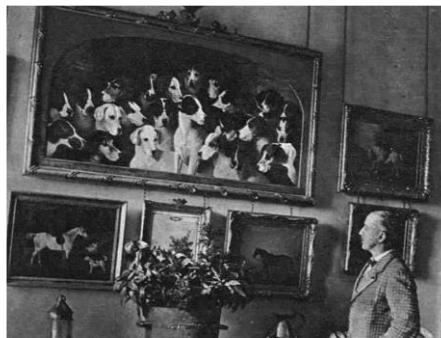
and her daughter, Miss Eileen Greenlees, were ensconced in the magnificently extravagant, exquisite, and sumptuous Whaddon Hall; its 35 rooms, palatial stairs, luxurious carpets, multiple wall paintings and the inevitable stags' heads staring

on any convening throng in the hall, set the backdrop for Maude and Miss Eileen's new lifestyle.

Servants on duty about that time were: Mary Ellis (from Brighton), governess, 59, for daughter Diane Selby Lowndes; Margaret the cook; Annie, 31, housemaid; Nellie (from Mentmore), 20, parlour maid; Dorothy Kate, 27, (from Banbury), kitchen maid; and London-born Margaret, 17, house maid.

### Brown costume trimmed with fur

Those employed in 'the House' sensed it would not be long after Maude's arrival that wedding bells would ring out. Indeed, before long they were able to read in the *Northampton Chronicle and Echo* of Thursday,



Some of the many sporting paintings with Col. Selby Lowndes in February 1923 at Whaddon Hall

4<sup>th</sup> December 1924: "A marriage has been arranged, and will take place shortly, between Lieut Col W Selby Lowndes of Whaddon Hall, Bucks; and Mrs. Maude Wotherspoon, widow of Mr T G Wotherspoon, of Glenholm, Monkton, Ayrshire. Col Selby Lowndes is well known in hunting circles, having at one time been the Master of the Whaddon Chase."

Four days later, London's *Daily Mirror* of Monday, 8<sup>th</sup> December 1924 reported, alongside a photograph of the couple: "At the early hour of 9am, Colonel W Selby Lowndes, former Master of the Whaddon Chase, and Mrs Maude Wotherspoon were married on Saturday at St Paul's Church, Knightsbridge. Only the couple's friends were present. Among them were the bridegroom's brother, Mr.

Richard Selby Lowndes. The Bishop of Buckingham, an old friend of the bridegroom's family, officiated. The bride was dressed in a brown costume, trimmed with dark brown fur, with hat, shoes, and stockings to match."

However, to its dismay, the *Daily Mirror* was pipped at the post by Sunday's *Weekly Dispatch* (London). On 7<sup>th</sup> December 1924, it carried (in a page of photographs – **right**) an identical photograph under the headline: "Well-known hunting man weds."



The couple, complete with buttonholes and with Colonel Selby Lowndes in top hat, were photographed outside St Paul's Church, Knightsbridge. The Anglo-Catholic church, consecrated in 1843, is one of London's most beautiful, elaborate and highly decorated Victorian church buildings.

The following year, during a 'bonding' holiday break, Miss Eileen became a member of the new Selby Lowndes family. The *Buckingham Advertiser and Free Press* of Saturday, 15<sup>th</sup> August 1925 (it spelt Miss Eileen's surname correctly) offered a titbit under a headline: "Make it known". It recorded: "Colonel and Mrs Selby Lowndes and Miss Eileen Greenlees have left Whaddon Hall, Bucks, for The Laggan, Carron, Morayshire."

**Next time.** Meet the 'breezy' admiral who becomes the "fly in the ointment" of Sir Richard's marriage.



**Interested in playing  
Table Tennis on Tuesday  
evenings?**

Beginners and experts welcome.

Contact Mark Carter:  
[magcarter@hotmail.co.uk](mailto:magcarter@hotmail.co.uk)

## Whaddon Entertainers Meeting – Wednesday 27<sup>th</sup> September

**In Whaddon Jubilee Hall at 8pm**

If you are interested in getting involved in our next show, whether that's performing, backstage, or front of house or you just want to find out what's next for the Entertainers, then please come along to this informal meeting.

No dates or themes have been discussed yet, this is the beginning of the planning process.

For more details, please contact Mark Carter, Guy Birch-Jones or Sharon Bessell.



## YOUR MAGAZINE NEEDS YOU!

**Do you love living in/near Whaddon and it's warm and friendly community?**

**An important part of supporting that is our wonderful Parish Magazine. Full of news and views and valuable information. It's part of the glue that holds our community together.**

WQ needs a new Editor.

### COULD THAT BE YOU?

You just need basic MS Word skills and a knack for reminding contributors to get their articles in on time. You also get to showcase your writing skills if you wish to.

Plenty of help and support is available. You only need a few hours each quarter.

Please get in touch to find out more:

[wqeditor@whaddonbucks-pc.gov.uk](mailto:wqeditor@whaddonbucks-pc.gov.uk) or  
[clerk@whaddonbucks-pc.gov.uk](mailto:clerk@whaddonbucks-pc.gov.uk)



Two Summer pictures of Whaddon Hall showing different summer moods. Thank you to Guy Birch-Jones and Julia Lemagnen for these photos.

# OPERA FEST

FEATURING  
**OPERA DUDES**

★★★★★  
THE GUARDIAN

**LIVE MUSIC - BAR - STREET FOOD**

RAISING FUNDS FOR THE THORNBOROUGH VILLAGE HALL  
REFURBISHMENT PROJECT



**16TH SEPT - 17:30**

MIDDLE SHELS PIT FARM - NASH ROAD - THORNBOROUGH

**Tickets £15\***

\*RAISING TO £20 SEPT 1ST. TICKET SALES: [THEJULIERS@BTINTERNET.COM](mailto:THEJULIERS@BTINTERNET.COM)  
BRING YOUR OWN CHAIR & PICNIC IF REQUIRED

## **NASH INVESTMENT CLUB VACANCIES**

**The Nash Investment Club is on a recruitment drive for additional members.**

**Are you interested?**

**Nash Investment Club** is a properly formed investment club with a constitution and rules and is currently holding a portfolio of cash and shares worth around £84,000.

The club meets on the 2<sup>nd</sup> Thursday of each month to review the investments held and to make purchases on a “round robin” basis whilst also planning social activities including lunches and trips out as appropriate.

The club has a good track record since its formation over 23 years ago. For example, newer members who joined just over 2 years ago have made around +33% profit over that time based on their initial investment, quite a healthy return.

The club currently has nine active members and two passive members, but has room for more (membership however is limited by its constitution to a maximum of 20 members)

All new members make an initial contribution of £100 and set up an ongoing direct debit payment of £25 per month to fund club share purchases. Members are then at liberty to withdraw their funds at any time, either equivalent to their value share of the portfolio (or a proportion of it) whenever they wish, provided reasonable notice has been given to the Treasurer.

To join the club, you must be nominated by an existing member, but if you would like to know more about joining then please reach out on the number below and we can happily discuss further.

**Nash Investment Club**

**(Ben Tel 07960 393388)**

# 6 Must-Do's for Buying Solar Panels!

Investing in solar panels? Making informed choices upfront is vital. As experienced roofing professionals at CRL Energy, we understand the importance of a reliable solar panel system.

Here are six essential factors to consider:

## 01. You **MUST** Check Your Roof's Warranty

Review your roof warranty thoroughly as some may be voided by installing solar panels. Understanding the terms prevents conflicts or warranty issues. Around 29% of UK residential roof area is suitable for solar panel installation.

## 02. You **MUST NOT** Skip Structural Inspection

Prioritise a comprehensive inspection to determine if your roof can bear the weight and stress of the panels. Addressing structural issues ensures safety and maximises your returns.

## 03. You **MUST** Utilise the Elements

Consider sunlight exposure and shading when placing solar equipment to optimise energy production. The UK receives an average of 4.5 hours of peak sunlight per day, ideal for solar energy generation.

## 04. You **MUST** Have Adequate System Designs

Tailor designs based on energy consumption, prices, shading, batteries, and installation space for efficient solar panel systems. The UK had over 13.5 GW of installed solar PV capacity by 2020, showing the growing adoption of solar energy.

## 05. You **MUST** be Cautious of Inexperienced Solar Panel Design Companies

Inefficient installations can reduce energy generation potential and pose risks. Choose companies with qualified electrical engineers to minimise defects and failures. Poor installation practices account for about 80% of panel defects.

## 06. You **MUST** assess company accreditation

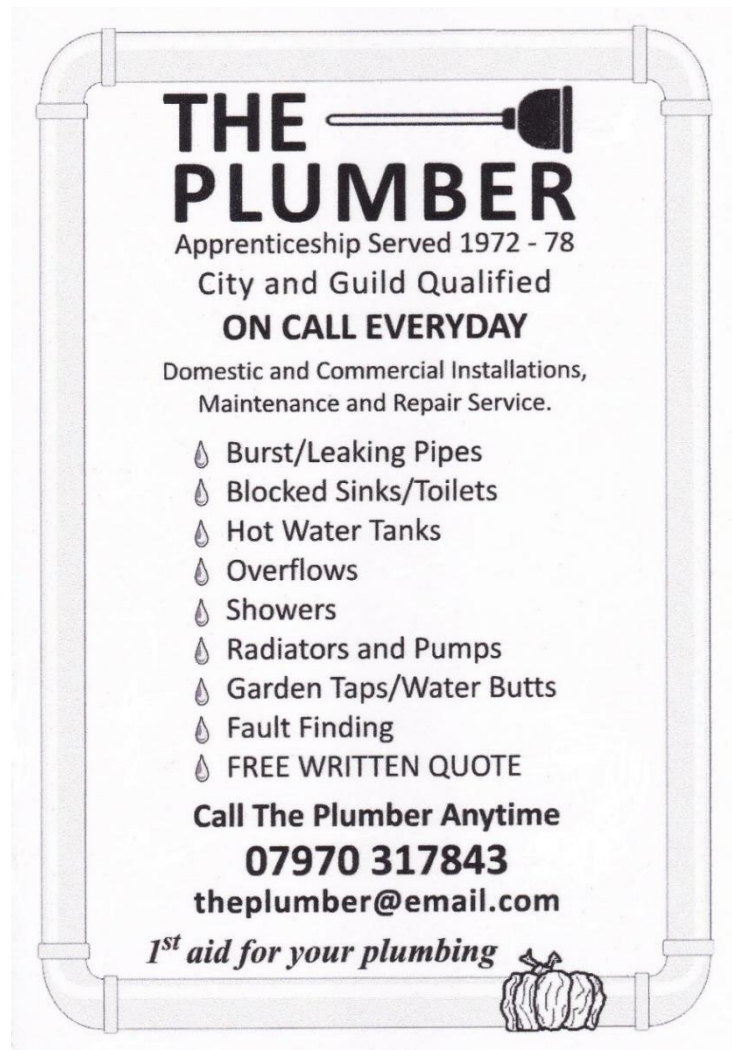
Prioritise solar panel installers with MCS accreditation for reliability and expertise. Over 80% of installations without it face higher risks of performance issues and reduced energy savings.

Investing in solar panels has a profound impact on energy consumption, savings, and the environment. With our roofing expertise, we understand the intricacies of solar panel installations. Research thoroughly, choose reliable installers, and make informed decisions.

## ABOUT THE AUTHOR

George Sugden, a roofing and solar services expert. As a lecturer on waterproofing at the annual RCI convention, his expertise is well respected in the industry. George and his team help clients harness sustainable energy by combining roofing excellence with solar services. Contact them at 01223 298252 if you require any further information about Solar PV.





**Mobile:** 07754 790557  
**Email:** dave.taylor.handyman@gmail.com

**HANDYMAN**

Painting & Decorating  
Building Works  
Sheds & Fencing  
Gardening  
Machinery Repairs & Servicing  
Home & Garden Clearance

**DAVE TAYLOR**

**HANDYMAN**

**DAVE TAYLOR**

Mobile: 07754 790557  
Chumley Cottage, 36 Vicarage Road  
Whaddon, Milton Keynes, MK17 0LU  
Email: dave.taylor.handyman@gmail.com

**Dave Taylor**  
Handyman

# COUNTRY FUNERALS

INDEPENDENT FUNERAL DIRECTORS

## TOWCESTER



1 Sponne House Centre, Towcester. NN12 6BY

01327 351500 24HR Service

[enquiries@countryfunerals.uk](mailto:enquiries@countryfunerals.uk) [www.countryfunerals.uk](http://www.countryfunerals.uk)

- Chapel of Rest • Home Arrangements
- Memorial Headstones
- Funeral Plans



## Tim Jenkins

*Providing home and small business IT and AV services*



**Need help with your email, mobile phone or Broadband?  
Just changed from PC to Mac and would like some assistance?  
Or maybe you have bought a Smart TV or sound system  
and would like help setting it up.**

I understand just how confusing today's technology can be and I will visit you at home to discuss how I can help with the installation, set up or problem solving of your computers, mobiles, TVs, Broadband and wifi.

I am also highly experienced in small company IT and telecommunications problem solving and website building.

**Call me on: 07814 721975**

**Or email me at: [tjstechnologyuk@gmail.com](mailto:tjstechnologyuk@gmail.com)**

**Website: [www.tjstechnology.co.uk](http://www.tjstechnology.co.uk)**



# ***Tring Market Auctions***

**Fine Art & Chattel Auctioneers & Valuers**

For further information and viewing times please  
contact us via the details below or visit

[www.tringmarketauctions.co.uk](http://www.tringmarketauctions.co.uk)

**Free Auction Valuations**

**Total and Part House Clearance Specialists**

**Valuation for Sale, Insurance, Taxation,**

**Probate & Family Division**

**Tel: 01442 826446      Fax: 01442 890927**

[sales@tringmarketauctions.co.uk](mailto:sales@tringmarketauctions.co.uk)

**Tring Market Auctions, Brook Street,**

**Tring, Herts HP23 5EF**

**[www.tringmarketauctions.co.uk](http://www.tringmarketauctions.co.uk)**

# Fernfield Business Units

## Fernfield Farm

enquiries @fernfieldunits.co.uk

---

We are pleased to support the Whaddon Quarterly

*Homemade Jewelry / Cards  
for all occasions  
Dress Making & Alterations*

*Ann Bennett*

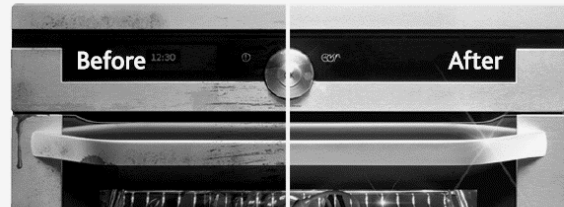
Stock Lane  
Whaddon

01908 522292

07854 577402

ann.bennett259@gmail.com





## Let Ovenclean take care of one of the most hated household chores!

"I'm simply delighted at how sparkly clean my oven and hob look now!  
It really does look like the cooker is brand new again!"

*Martin Belcher*

- Ovens
- Filters
- Hobs
- Grills
- BBQs
- Ranges
- Extractors
- Microwaves
- AGAs

Call your local Ovenclean specialist Roger Butcher today on:

**07800 888 271 or 0800 840 7127**

[www.ovenclean.com](http://www.ovenclean.com)



## GREENTREESERVICES

PROFESSIONAL TREE SURGEONS

**All aspects of Tree Surgery and Arboriculture:**

- Tree pruning & felling
- Hedge trimming
- Tree reports & surveys
- Stump grinding
- Firewood supply
- Free quotes & advice
- £5m Public Liability Insurance
- NPTC Qualified
- National Diploma Arboriculture

**01908 506286 – 07533 371648**

**[WWW.GREEN-TREE-SERVICES.CO.UK](http://WWW.GREEN-TREE-SERVICES.CO.UK)**

**City & Guilds**  
Qualified



## **... PLUMBING & HEATING ON OIL FIRED BOILERS...**

- Join 100s of happy customers who rely on us to look after their appliance
- 8 years of experience in servicing and repairing oil fired boilers
- Work on all major boiler manufactures including:  
*Worcester                      Grant                      Thermecon*  
*Potterton                      Trianco                      Firebird*  
*and many more*
- Service, repairs and new installations on oil fired boilers
- New oil tank installation
- OFTEC registered
- NVQ Level Two in Plumbing
- Very good customer feedback
- No Fix, No Fee
- Receive a £10 gift voucher for a retailer of your choice, as a thank you per recommendation
- Oil syndicates welcome



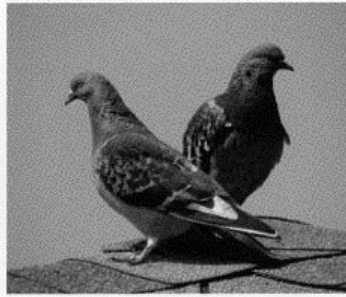
**Contact:**  
**07768 618 555**  
**01908 313 216**





# **CLEAR PEST MILTON KEYNES**

**YEARLY CONTRACTS AVAILABLE  
WOODWORM TREATMENTS ALSO AVAILABE**



**RESIDENTIAL - COMMERCIAL - AGRICULTURAL**

**ARE ANY OF THE FOLLOWING PESTS  
A PROBLEM FOR YOU?**

- **MOLES**
- **WASPS**
- **RATS**
- **MICE**
- **BEEES**
- **ANTS**
- **FLEAS**
- **RABBITS**
- **BIRDS**
- **FLIES**



Email: [enquiries@clearpestmiltonkeynes.co.uk](mailto:enquiries@clearpestmiltonkeynes.co.uk)

**[www.clearpestmiltonkeynes.co.uk](http://www.clearpestmiltonkeynes.co.uk)  
Tel: 01908 504405 Mob: 07771966377**

**Proprietor: Roger Jaworski**

Your friendly,  
local printer...



**HARLEQUIN  
PRESS Ltd**

Lithographic and Digital Printing



Booklets  
Brochures  
Business Cards  
Compliment Slips  
Delivery Notes  
Directories  
Draw Tickets

Event Tickets  
Invitations  
Invoice Books/Sets  
Leaflets  
Letterheads  
Magazines  
Newsletters

Note pads  
Order of Service  
Personal Stationery  
Postcards  
Programmes  
Timetables  
*and Whaddon Quarterly*

**Tel: 01908 506722**

12 Bacon House Farm • Warren Road • Little Horwood • Milton Keynes • MK17 0PS  
office@harlequin-press.co.uk • www.harlequin-press.co.uk



**Buckingham Wills & Probate**

Part of Bicester Wills Ltd

- Standard Single Will - £225
- Standard Mirror Wills - £325
  - Bloodline Wills - £625
- Lasting Power of Attorney  
Property & Financial Affairs - £325
- Lasting Power of Attorney  
Health & Welfare - £325
- Both Lasting Powers of Attorney - £500
  - Probate Assistance from - £1,500
- Pre-paid Funerals Plans - from £1,700

Gail and the Team  
offer a friendly  
estate planning  
service

Home visits  
no extra  
charge!!

Come in and see us  
The Garage, Castle Street  
Buckingham MK18 1BS  
or phone  
**01280 811201**

lesley@buckinghamwillsandprobate.co.uk

www.buckinghamwillsandprobate.co.uk



***Thank you to everyone who has supported Ilex Cottage, it's been a busy year made very special with so many local guests staying.***

Two-bedroom character cottage in the centre of Thornborough, renovated to an exceptional standard, sleeps four.

- Ideal for short breaks and visiting family & friends
- Perfect for business travel with broadband & Wi-Fi
- Excellent reviews

Please feel free to get in touch to discuss individual requirements and for more details head to our website <https://ilexcottage.com> or Facebook page Ilex Cottage Thornborough.



Liz: 0778 8872717



[ilexcottagehornborough@btinternet.com](mailto:ilexcottagehornborough@btinternet.com)



**07305 069 410**

[louisebourns@yahoo.com](mailto:louisebourns@yahoo.com)



Hair by louise bourns



hair\_by\_louise\_bourns

### **MOBILE HAIRDRESSER – Several clients in Whaddon**

Passionate, salon trained, experienced stylist in all aspects of hair dressing

Offering you professional expertise in the comfort of your own home

Can give a free complimentary consultation to discuss your requirements and give an accurate price quote. A guidance price list is available upon request or see my Facebook Page

Skin patch test is required 48hrs prior to colouring treatments

Fully insured, BARBICIDE certified, safety measures in place including PPE

# Experience you can rely on. People you can trust.

Whatever your legal needs, we've got the people, expertise and edge to deliver the winning result.



Commercial Property  
Corporate & Commercial Law  
Dispute Resolution  
Employment Law  
Family Law  
Fixed Fee Consultations

Landlord & Tenant  
Probate  
Property Litigation & Disputes  
Residential Conveyancing  
Settlement Agreement Advice  
Wills, Trusts & Estate Planning



Rachael MacIntyre



Elaine Foster



Simon Stone



Gemma Noble



Emily Izzo

Whenever you need a lawyer you know who to pick up the phone to!

**01908 410844**  
**mail@macintyrelaw.co.uk**

Stony Stratford Office: 82-84 High Street, Stony Stratford, MK11 1AH

**www.macintyrelaw.co.uk**

# What's happening in Whaddon?

## Dates for your diary

**SUNDAY 10<sup>th</sup> SEPTEMBER:** Table-top sale 2-4pm at Jubilee Hall. Page 25.

**WEDNESDAY 13<sup>th</sup> SEPTEMBER:** Church Meeting at Jubilee Village Hall. Pg 19.

**THURSDAY 14<sup>th</sup> SEPTEMBER:** Whaddon Parish Council meeting 7pm at The Chapel, Stock Lane.

**FRIDAY 13<sup>th</sup> OCTOBER:** Quiz Night at Jubilee Village Hall. See Page 7 for more details.

**SUNDAY 15<sup>th</sup> OCTOBER:** Harvest Festival at St. Mary's Church. Pg 19.

**MONDAY 16<sup>th</sup> OCTOBER:** Harvest supper at Jubilee Village Hall. Pg 19.

**SATURDAY 28<sup>th</sup> OCTOBER:** Craft Fayre at Jubilee Village Hall. Pg 7.

**SATURDAY 3<sup>rd</sup> NOVEMBER:** Italian Evening at Jubilee Village Hall. Pg 7.

**WEDNESDAY 8<sup>th</sup> NOVEMBER:** AGM at Jubilee Village Hall. Pg 7.

**THURSDAY 9<sup>th</sup> NOVEMBER:** Whaddon Parish Council meeting 7pm at The Chapel, Stock Lane.

**SATURDAY 26<sup>th</sup> NOVEMBER:** Church Christmas Fayre. P19.

**SATURDAY 2<sup>nd</sup> DECEMBER:** Village Christmas Tree Lighting Up ceremony with bar and food. P7.

**THURSDAY 11<sup>th</sup> JANUARY:** Whaddon Parish Council meeting 7pm at The Chapel, Stock Lane.

**THURSDAY 14<sup>th</sup> MARCH:** Whaddon Parish Council meeting 7pm at The Chapel, Stock Lane.

***2024 Save the date: THURSDAY 6<sup>th</sup> JUNE 2024: Beacon Event to mark 80<sup>th</sup> anniversary of the D-Day landings. More details to follow in future Whaddon Quarterlies.***

## Regular events across the village

**MONDAY EVENINGS:** Chase Choir in the Whaddon Jubilee Hall. 7.30pm-9pm. No experience necessary. Please call Marianna Beckwith on 01908 503194 for more details.

**TUESDAY EVENINGS:** Table Tennis in the Whaddon Jubilee Hall. Contact Mark Carter on [magcarter@hotmail.co.uk](mailto:magcarter@hotmail.co.uk)

**FIRST WEDNESDAY OF EACH MONTH:** Whaddon's Women's Institute 2pm in the Whaddon Jubilee Hall. Please call Jill Aitken on 01908 502781 for more details.

**THURSDAY EVENINGS:** Mindfulness based Yoga with Lauren in the Whaddon Jubilee Hall. 7.30pm-8.30pm. Please contact Lauren Bennett on [lauren@thelollipopway.co.uk](mailto:lauren@thelollipopway.co.uk) if you are interested.



Views across the Whaddon fields, photos courtesy of Vicky Harrison and Graham Hain