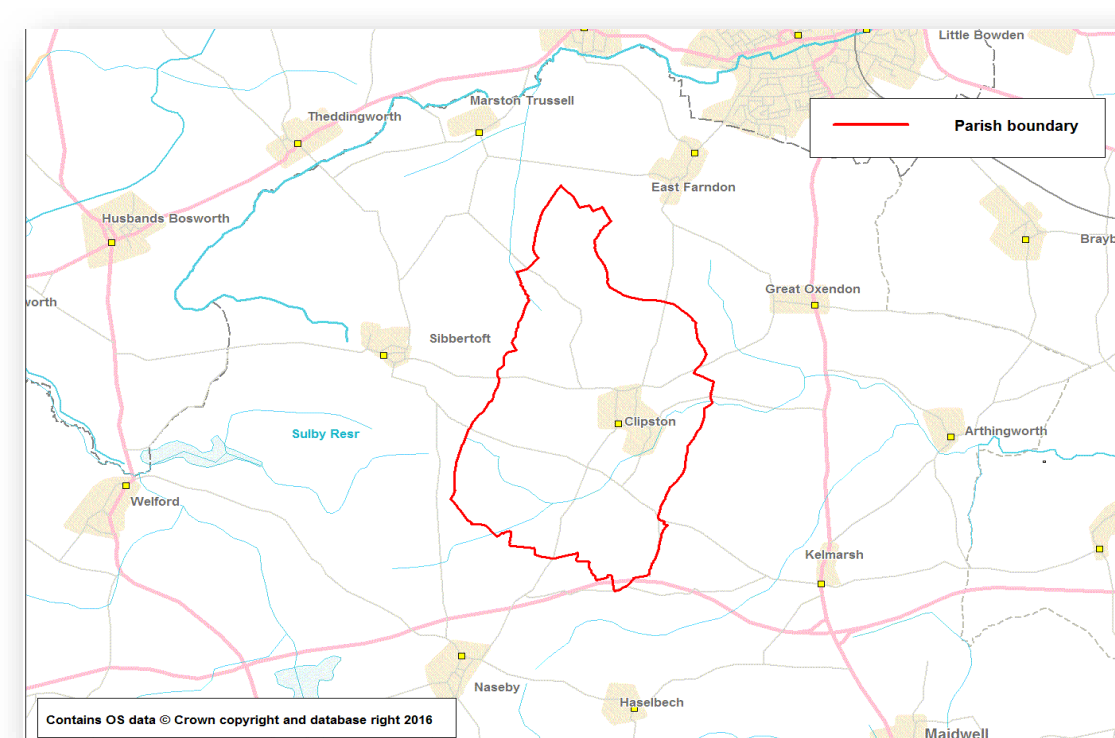


Clipston Parish Census 2011 Profile

This Parish Profile presents data from the 2011 Census which took place on 27th March 2011.

It provides comparisons against the borough, region and England averages.



| | Clipston | | Daventry | East Midlands | England |
|---|------------|-------------|-------------|---------------|-------------|
| | No | % | % | % | % |
| USUAL RESIDENTS BY AGE BAND | | | | | |
| Aged 0-4 | 35 | 5.4 | 5.6 | 6.0 | 6.3 |
| Aged 5-15 | 96 | 14.9 | 13.4 | 12.5 | 12.6 |
| Aged 16-64 | 412 | 64.1 | 64.0 | 64.5 | 64.8 |
| Aged 65+ | 100 | 15.6 | 16.9 | 17.1 | 16.3 |
| All Usual Residents | 643 | 100.0 | 100.0 | 100.0 | 100.0 |
| ETHNIC GROUP | | | | | |
| White | 625 | 97.2 | 96.5 | 89.3 | 85.4 |
| Mixed/Multiple Ethnic groups | 11 | 1.7 | 1.2 | 1.9 | 2.3 |
| Asian | 5 | 0.8 | 1.5 | 6.5 | 7.8 |
| Black | 2 | 0.3 | 0.6 | 1.8 | 3.5 |
| Other Ethnic Groups | - | 0.0 | 0.1 | 0.6 | 1.0 |
| All Usual Residents | 643 | 100.0 | 100.0 | 100.0 | 100.0 |
| RELIGION | | | | | |
| Christian | 460 | 71.5 | 64.7 | 58.8 | 59.4 |
| Buddhist | - | - | 0.4 | 0.3 | 0.5 |
| Hindu | 4 | 0.6 | 0.4 | 2.0 | 1.5 |
| Jewish | - | - | 0.1 | 0.1 | 0.5 |
| Muslim | - | - | 0.6 | 3.1 | 5.0 |
| Sikh | - | - | 0.2 | 1.0 | 0.8 |
| Other Religion | 5 | 0.8 | 0.3 | 0.4 | 0.4 |
| No Religion | 144 | 22.4 | 26.6 | 27.5 | 24.7 |
| Religion Not Stated | 30 | 4.7 | 6.8 | 6.8 | 7.2 |
| All Usual Residents | 643 | 100.0 | 100.0 | 100.0 | 100.0 |
| HIGHEST LEVEL OF QUALIFICATION | | | | | |
| No Qualifications | 65 | 12.7 | 19.6 | 24.7 | 22.5 |
| Level 1 Qualifications | 55 | 10.7 | 13.3 | 13.9 | 13.3 |
| Level 2 Qualifications | 81 | 15.8 | 16.0 | 15.6 | 15.2 |
| Apprenticeship | 27 | 5.3 | 5.3 | 4.0 | 3.6 |
| Level 3 Qualifications | 59 | 11.5 | 11.7 | 12.9 | 12.4 |
| Level 4 Qualifications and Above | 201 | 39.3 | 28.2 | 23.6 | 27.4 |
| Other Qualifications | 24 | 4.7 | 6.0 | 5.3 | 5.7 |
| All Usual Residents Aged 16 and Over | 512 | 100.0 | 100.0 | 100.0 | 100.0 |
| ECONOMIC ACTIVITY & INACTIVITY | | | | | |
| All Usual Residents Aged 16 to 74 | 476 | 100.0 | 100.0 | 100.0 | 100.0 |
| Economically Active Total | 345 | 72.5 | 73.5 | 69.3 | 69.9 |
| Employee, Part-time | 69 | 14.5 | 13.9 | 14.4 | 13.7 |
| Employee, Full-time | 166 | 34.9 | 44.6 | 38.8 | 38.6 |
| Self Employed | 81 | 17.0 | 8.9 | 8.7 | 9.8 |
| Unemployed | 13 | 2.7 | 3.6 | 4.2 | 4.4 |
| Full-time Student (economically active) | 16 | 3.4 | 2.5 | 3.3 | 3.4 |
| Economically inactive Total | 131 | 27.5 | 26.5 | 30.7 | 30.1 |
| Retired | 71 | 14.9 | 14.7 | 15.0 | 13.7 |
| Student (including Full-Time Students) | 20 | 4.2 | 3.9 | 5.8 | 5.8 |
| Looking After Home or Family | 21 | 4.4 | 3.5 | 4.0 | 4.4 |
| Long-Term Sick or Disabled | 10 | 2.1 | 2.8 | 4.1 | 4.0 |
| Other | 9 | 1.9 | 1.5 | 1.9 | 2.2 |

| | Clipston | | Daventry | East Midlands | England |
|--|----------|-------|----------|---------------|---------|
| | No | % | % | % | % |
| METHOD OF TRAVEL TO WORK | | | | | |
| Work Mainly at or From Home | 50 | 10.5 | 5.7 | 3.3 | 3.5 |
| Underground, Metro, Light Rail, Tram | 1 | 0.2 | 0.1 | 0.2 | 2.6 |
| Train | 10 | 2.1 | 1.3 | 0.9 | 3.5 |
| Bus, Minibus or Coach | 1 | 0.2 | 1.0 | 4.0 | 4.9 |
| Taxi | - | 0.0 | 0.1 | 0.3 | 0.3 |
| Motorcycle, Scooter or Moped | 2 | 0.4 | 0.4 | 0.5 | 0.5 |
| Driving a Car or Van | 232 | 48.7 | 49.5 | 42.2 | 36.9 |
| Passenger in a Car or Van | 12 | 2.5 | 3.3 | 3.9 | 3.3 |
| Bicycle | 1 | 0.2 | 0.9 | 1.8 | 1.9 |
| On Foot | 19 | 4.0 | 6.2 | 7.1 | 6.9 |
| Other Method of Travel to Work | 1 | 0.2 | 0.3 | 0.3 | 0.4 |
| Not in Employment | 147 | 30.9 | 31.1 | 35.7 | 35.3 |
| All Usual Residents Aged 16 to 74 | 476 | 100.0 | 100.0 | 100.0 | 100.0 |
| HEALTH | | | | | |
| Very Good Health | 359 | 55.8 | 48.4 | 45.3 | 47.2 |
| Good Health | 180 | 28.0 | 35.3 | 35.1 | 34.2 |
| Fair Health | 77 | 12.0 | 12.1 | 14.0 | 13.1 |
| Bad Health | 23 | 3.6 | 3.3 | 4.3 | 4.2 |
| Very Bad Health | 4 | 0.6 | 0.9 | 1.2 | 1.2 |
| All Usual Residents | 643 | 100.0 | 100.0 | 100.0 | 100.0 |
| Long-Term Health Problem or Disability | | | | | |
| Day-to-Day Activities Limited a Lot | 34 | 5.3 | 6.6 | 8.7 | 8.3 |
| Day-to-Day Activities Limited a Little | 56 | 8.7 | 9.0 | 9.9 | 9.3 |
| Day-to-Day Activities Not Limited | 553 | 86.0 | 84.4 | 81.4 | 82.4 |
| All Usual Residents | 643 | 100.0 | 100.0 | 100.0 | 100.0 |
| Provision of Unpaid Care | | | | | |
| Provides No Unpaid Care | 562 | 87.4 | 89.1 | 89.2 | 89.8 |
| Provides 1 to 19 Hours Unpaid Care a Week | 62 | 9.6 | 7.7 | 6.9 | 6.5 |
| Provides 20 to 49 Hours Unpaid Care a Week | 7 | 1.1 | 1.1 | 1.4 | 1.4 |
| Provides 50 or More Hours Unpaid Care a Week | 12 | 1.9 | 2.0 | 2.5 | 2.4 |
| All Usual Residents | 643 | 100.0 | 100.0 | 100.0 | 100.0 |
| HOUSEHOLDS AND HOUSEHOLD SPACES | | | | | |
| All Household Spaces | 261 | 100.0 | 100.0 | 100.0 | 100.0 |
| Household Spaces With At Least One Usual Resident | 252 | 96.6 | 97.0 | 96.0 | 95.7 |
| Household Spaces With No Usual Residents (empty homes) | 9 | 3.4 | 3.0 | 4.0 | 4.3 |
| COMMUNAL ESTABLISHMENTS | | | | | |
| Number of communal establishments | - | | | | |
| All usual residents in communal establishments | - | | | | |
| TENURE | | | | | |
| All occupied Households | 252 | 100.0 | 100.0 | 100.0 | 100.0 |
| Owned; Owned Outright | 103 | 40.9 | 33.3 | 32.8 | 30.6 |
| Owned; Owned with a Mortgage or Loan | 90 | 35.7 | 38.4 | 34.5 | 32.8 |
| Shared Ownership (Part Owned and Part Rented) | - | 0.0 | 0.9 | 0.7 | 0.8 |
| Social Rented; Rented from Council (Local Authority) | 5 | 2.0 | 4.1 | 10.1 | 9.4 |
| Social Rented; Other | 22 | 8.7 | 9.9 | 5.7 | 8.3 |
| Private Rented; Private Landlord or Letting Agency | 28 | 11.1 | 11.0 | 13.6 | 15.4 |
| Private Rented; Other | 1 | 0.4 | 1.1 | 1.3 | 1.4 |
| Living Rent Free | 3 | 1.2 | 1.4 | 1.3 | 1.3 |
| ACCOMMODATION TYPE | | | | | |
| All household spaces (occupied + vacant) | 261 | 100.0 | 100.0 | 100.0 | 100.0 |
| Detached | 158 | 60.5 | 42.7 | 32.2 | 22.3 |
| Semi-Detached | 73 | 28.0 | 31.2 | 35.1 | 30.7 |
| Terraced | 28 | 10.7 | 18.9 | 20.6 | 24.5 |
| Flat, Maisonette or Apartment | 2 | 0.8 | 7.0 | 11.7 | 22.1 |
| Caravan or Other Mobile or Temporary Structure | - | 0.0 | 0.2 | 0.4 | 0.4 |
| NUMBER OF BEDROOMS | | | | | |
| All Household Spaces With At Least One Usual Resident | 252 | 100.0 | 100.0 | 100.0 | 100.0 |
| No Bedrooms | - | 0.0 | 0.2 | 0.2 | 0.2 |
| 1 Bedroom | 4 | 1.6 | 5.6 | 8.1 | 11.8 |
| 2 Bedrooms | 44 | 17.5 | 21.6 | 26.5 | 27.9 |
| 3 Bedrooms | 92 | 36.5 | 39.9 | 45.4 | 41.2 |
| 4 Bedrooms | 70 | 27.8 | 24.6 | 15.4 | 14.4 |
| 5 or More Bedrooms | 42 | 16.7 | 8.0 | 4.4 | 4.6 |

| | Clipston | | Daventry | East Midlands | England |
|---|----------|-------|----------|---------------|---------|
| | No | % | % | % | % |
| DEPRIVATION | | | | | |
| All occupied Households | 252 | 100.0 | 100.0 | 100.0 | 100.0 |
| Household is Not Deprived in Any Dimension | 147 | 58.3 | 50.7 | 42.8 | 42.5 |
| Household is Deprived in 1 Dimension | 72 | 28.6 | 31.4 | 32.4 | 32.7 |
| Household is Deprived in 2 Dimensions | 28 | 11.1 | 14.9 | 19.6 | 19.1 |
| Household is Deprived in 3 Dimensions | 5 | 2.0 | 2.7 | 4.8 | 5.1 |
| Household is Deprived in 4 Dimensions | - | - | 0.2 | 0.4 | 0.5 |
| HOUSEHOLD SIZE | | | | | |
| All Household Spaces With At Least One Usual Resident | 252 | 100.0 | 100.0 | 100.0 | 100.0 |
| 1 Person in Household | 51 | 20.2 | 25.1 | 29.0 | 30.2 |
| 2 People in Household | 98 | 38.9 | 38.6 | 36.2 | 34.2 |
| 3 People in Household | 37 | 14.7 | 15.8 | 15.6 | 15.6 |
| 4 People in Household | 49 | 19.4 | 14.3 | 12.9 | 13.0 |
| 5 People in Household | 13 | 5.2 | 4.7 | 4.3 | 4.7 |
| 6 People in Household | 4 | 1.6 | 1.2 | 1.4 | 1.7 |
| 7 People in Household | - | - | 0.2 | 0.3 | 0.4 |
| 8 or More People in Household | - | - | 0.1 | 0.2 | 0.3 |
| CAR OR VAN AVAILABILITY | | | | | |
| All occupied Households | 252 | 100.0 | 100.0 | 100.0 | 100.0 |
| No Cars or Vans in Household | 9 | 9.3 | 12.0 | 22.1 | 25.8 |
| 1 Car or Van in Household | 82 | 37.5 | 37.4 | 42.5 | 42.2 |
| 2 Cars or Vans in Household | 112 | 37.6 | 36.4 | 27.4 | 24.7 |
| 3 Cars or Vans in Household | 29 | 12.6 | 10.1 | 6.0 | 5.5 |
| 4 or More Cars or Vans in Household | 20 | 2.9 | 4.1 | 2.0 | 1.9 |
| All Cars or Vans in Area | 483 | | | | |

Source: Office for National Statistics licensed under the Open Government Licence v.3.0.

The data in this profile is derived from the following tables c/o NOMIS website and is subject to Crown Copyright.

Economic Activity, 2011 (QS601EW); Tenure, 2011 (KS402EW); Religion, 2011 (KS209EW); Accommodation Type - Households, 2011 (QS402EW); Number of Bedrooms, 2011 (QS411EW); Provision of Unpaid Care, 2011 (QS301EW); Households by Deprivation Dimensions, 2011 (QS119EW); Age Structure, 2011 (KS102EW); Tenure - Households, 2011 (QS405EW); Household Size, 2011 (QS406EW); Ethnic Group, 2011 (QS201EW); Long-Term Health Problem or Disability, 2011 (QS303EW); Car or Van Availability, 2011 (QS416EW); Method of Travel to Work, 2011 (QS701EW); Household Spaces, 2011 (QS417EW); Dwellings, Household Spaces and Accommodation Type, 2011 (KS401EW); General Health, 2011 (QS302EW); Highest Level of Qualification, 2011 (QS501EW)