

The Kingsclere Tower



May 2021

Your Village Magazine

The Kingsclere Tower

EDITORS: Nicki Lee, Sarah Hewitt & Mike Stokoe
 ADVERTISING: Brian Elborn b.elborn345@btinternet.com tel 298704
 DISTRIBUTION: Brian Elborn tel 298704
 ASSEMBLY: Andrew Kitch tel 299743
 PRINTERS: Kingsclere Design and Print
 LAYOUT/COVER: Cathy Williams

Slowly and carefully, restrictions are being removed and we all have more opportunities to shop, be entertained and most importantly see our friends and family face to face. It has been an exceptionally long and trying year but we can all hope the worst is behind us now.

It is so good to see more activities being planned. I know we are all grateful to the villagers who volunteer so much of their time to all of the many organisations, clubs and groups here in Kingsclere, which make it such a special place to live.

The Editor

Would you like to read your monthly Tower online or on your device?

Simply email the editors at kingscleretower@gmail.com and ask to subscribe. You will receive your Tower through your email. Why not tell friends and relations who may have moved away? (At the moment, you will still receive paper copies through the door as well.)



Neither the Editor nor the Management Committee accept responsibility for the opinions expressed or the goods and services advertised in the Kingsclere Tower magazine.

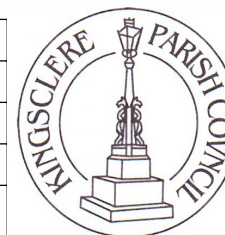
COPY DEADLINE for June 2021 issue: 12 May 2021

Send copy to the editors at 3 Blue Meadow, Garrett Close, Kingsclere or email: kingscleretower@gmail.com

All contributors MUST include name, address, phone number and/or email

Kingsclere Parish Council

Chairman:	John Sawyer (297221)
Clerk:	01635 298634
Email:	clerk@kingsclere-pc.org.uk
Office:	37 George St, Kingsclere RG20 5NH
Public Opening:	The office is currently closed please use the contact details above.



STATEMENT FROM THE CHAIRMAN

It is with great sadness that we hear today of the death of His Royal Highness Prince Philip, the Duke of Edinburgh. Our thoughts are with Her Majesty the Queen, and we express our sincere condolences to her and the Royal Family.

Cllr John Sawyer - 9 April, 2021

VILLAGE DEFIBRILLATORS – The Parish Council wish to remind or inform residents who may be unaware that there are two defibrillators in the village. One located beside the door to the Fire Station that is accessible 24 hours a day and one at the Fieldgate Centre that is accessible when the Fieldgate Centre is open. The emergency operator will provide the location of the nearest one and the unlock code.

KINGSCLERE PARISH COUNCIL POSTER COMPETITION 2019

After a long delay due to Covid-19, the Parish Council is pleased to share the winning designs of the 2019 poster competition, available to see on KPC's website and social media pages. Congratulations and thanks to the winners, as well as to everyone who entered.

HAMPSHIRE CONSTABULARY ISSUES WARNING TO DOG

WALKERS IN RURAL AREAS - Police officers from Hampshire Constabulary's Country Watch team are issuing a stark warning to dog walkers to 'keep dogs on leads in rural areas or face possible prosecution'. This follows several incidents in the East Hants area, in particular the South Downs, whereby owners have been walking with dogs off lead and not under close control. They have subsequently chased or attacked livestock and wild animals.

Under the Dogs (Protection of Livestock) Act 1953 it is a criminal offence for a dog to actively worry livestock and police want to make sure owners are aware that in such instances, the owner/person in control of the dog can be prosecuted, and the dog can be shot by the farmer to end an attack.

COVID-19 TESTING WITHOUT SYMPTOMS AVAILABLE FOR ALL HAMPSHIRE RESIDENTS - From 9 April, anyone can access free, rapid lateral flow(LFD) tests for themselves and their families to use and record their results twice a week.

Kits can be collected from testing sites across the county. Enter your postcode on the NHS site map to find your nearest site and opening times-

<https://find-covid-19-rapid-test-sites.maps.test-and-trace.nhs.uk/findatestcenter.html>

To take a supervised LFD test at a community testing site, drop in on the day or book an appointment online. You must not go to these sites if you have any symptoms.

Collection is also available from the walk-through testing site at Churchill Way long stay car park in the afternoons only – opening times are available on the County Council's website -

<https://www.hants.gov.uk/socialcareandhealth/coronavirus/test-and-trace/testing-symptoms>

It is important not to attend these sites outside collection times.

For those who cannot access these options a new online ordering service has a supply of test kits for home delivery.

Visit www.gov.uk/order-coronavirus-rapid-lateral-flow-tests or call 119.

Residents may also be eligible for regular asymptomatic testing through their workplace. Hampshire County Council is continuing to work with the Department of Health and Social Care to roll-out pharmacy collection in Hampshire over the coming weeks.

There is more information about tests and test results and what to do on the NHS website - <https://www.nhs.uk/conditions/coronavirus-covid-19/testing/test-results/>

Any adult or child with symptoms of COVID-19 should get a test: book a test online by visiting <https://www.gov.uk/get-coronavirus-test> or call 119.

NEW LOCAL TESTING SITE - A new local testing site for those with COVID-19 symptoms has been constructed in Churchill Way Long Stay Car Park in Basingstoke to replace The Anvil testing site, which closed on 6 April. Car parking in Churchill Way long stay will still be available but at a reduced capacity.

BONFIRES – A polite request, residents are asked to be considerate when lighting bonfires. Now spring is upon us more people will have windows open and will be using gardens for recreation and laundry. There are no laws regarding the lighting of bonfires just a consideration for all of us to check wind direction and consider our local roads and visibility consequences for all road users.

GREEN WHEELY BINS& GLASS RECYCLING

Wednesday 5th and 19th May / Wednesday 2nd June and 16th June

RE-OPENING OF BASINGSTOKE TOWN CENTRE

Visitors to Basingstoke town centre and other shopping areas across the borough are being encouraged to plan their visit as individual businesses, and in particular outdoor hospitality such as bars, pubs and restaurants are likely to have new measures in place such as booking systems. Motorists will be able to enjoy one hour of free parking in three of the council's short stay car parks and electric vehicle owners wishing to charge their electric vehicle in the Feather's Yard charging hub can also park for free, with just the cost of charging to pay for.

Shoppers using council-owned car parks in the town centre are being urged to make card payments using the free RingGo app, with parking set to become even easier and cheaper following the removal of a 20p convenience charge. Motorists will be able to extend their shopping trips without having to return to their vehicle and the app also allows visitors to find the closest car park before arriving in the town centre.

POSSIBLE NEW HOSPITAL CONSULTATION

Hampshire Together is a programme that has the potential to deliver a new hospital to serve the people of north and mid Hampshire, as well as many other healthcare benefits, as part of the government's Health Infrastructure Plan to modernise NHS hospitals. All NHS and social care organisations across the area are determined to make the most of this opportunity as they strive to support patients, their families, and their carers to access the right care, in the right place, at the right time to keep them healthy.

A new hospital supports this ambition, but their ideas go beyond it. The project team is also thinking about ways in which they can change health services across the area to make them work better, both for patients and their hard-working staff. The project team will be carrying out further public consultation in summer 2021 on clinical options and proposed locations for a new hospital.

NEXT PARISH COUNCIL MEETING

– will be at 7:30pm on Monday 24th May 2021. At the time of writing this is planned to be a socially distanced physical meeting in the Village Club due to legislation that permits virtual meetings expiring on 7th May, with no current plan to extent this. KPC is in discussions with the Village Club regarding the possibility and logistics of holding physical meetings again as KVC are bound by their own rules which KPC must comply with. **If you intend to attend this meeting, please inform the Clerk** so that KPC knows how many people to expect, and a larger venue can be organized if necessary, to accommodate social distancing. This meeting will only go ahead if the Village Club is able to accommodate it or an alternative venue is found. By informing the Clerk you wish to attend, you will be kept up to date if this meeting is cancelled or there is a change of venue. Please see the Agenda on the Parish Council's website.

Kingsclere Gardening Association

Out of lockdown - Great! Let us hope it stays that way. Still social distancing so no get-togethers this side of autumn I expect. We still have plans for a plant sale in the churchyard on May22nd; we feel this can be managed with the restrictions that will probably be in force. We would be pleased to receive donations of plants on the morning when we set up.

Now is a good time to be sowing many vegetables that can be safely planted out by late May after the danger of frost. These would include beans, both runner and French, tomatoes, marrows, courgettes, and peppers. I have been asked if I could find a Pampas grass plant for a member living in Kingsclere so if anyone has a plant they can safely take a piece of this person would be very pleased to receive it. I realize these are not as common as they used to be when they seemed to be a status symbol.

No shows in Kingsclere this year but I do hope they return next year. *I understand Burghclere are very hopeful of running one in August. I do hope that we are all vaccinated by then and this plague is under control*

John Eckton 01256 850017



Kingsclere Community Library



“Your local FREE library”

Well it's all GO here at your library!

We reopened as hoped on Tuesday 13th April, following all health and safety procedures. We issued new Kingsclere Library cards to everyone who came in as we move forward as an independent public library. There is no cost for cards or for using the library and everyone is welcome to join.

Right now, we permit two people in the main library and one family in the children's library at a time. You are welcome to stop by at your convenience, but you may have to wait to come in. If you would like to guarantee a time, please email or phone in advance to book your visit. (Appointments cannot be arranged on the same day.)

NEW HOURS

We have made some changes to our schedule and are now open one evening per week, on a Thursday! We also shortened our Saturday hours during which times we rarely had people in.

Tuesdays 1:00pm - 5:30pm
Thursdays 2:30pm - 7:00pm
Saturdays 10:00am - 1:00pm

If you would like to volunteer at the library please contact us via email or telephone. We particularly need people for the second shift on Thursdays, 4:45-7:00pm.

We are **still** waiting for permission from B&DBC to put up a new sign, but plan to have a temporary sign soon. Don't worry – we are still here to serve you!

We expect our new automated library system will be up and running by May, allowing us to check out your loans quickly and easily, and keep track of our collection.

We have had excellent news on the fund raising front! Greenham Trust has agreed to match funding for us as we raise money for a year's rent and electricity bills. Any donations made through The Good Exchange between now and 1st October will be doubled, with Greenham Trust giving us £1 for every £1 donated. If you would like to support us, please visit the website at thegoodexchange.com and search for Kingsclere Library. We are very grateful to everyone who has supported us so far.

Nicki Lee, Kingsclerelibrary@gmail.com 07899 623872

Nature Notes

The threshing and tumult in the pond in late February, early March resulted in a fine hatch of tadpoles which, once clear of their egg sacs, clustered together in writhing hordes on the surface of the water but have now dispersed to lead individual lives. The fish will be happy and will reduce their number but Nature is profligate and many will survive to become froglets. The pond is really for fish but over the years has also attracted wildlife and some sort of balance has been kept. It was very successful for dragonflies whose nymphs accounted for a larger cull of tadpoles than the fish but in recent times has had to be netted against herons and has prevented dragonflies from laying their eggs; this was a shame for when they emerged from their cases they would fly to nearby bushes to finish drying, a wonderful sight.



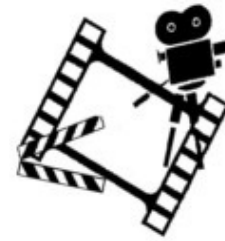
Native primrose

We managed to complete the circular lakes walk we often write about after recent floods had prevented it. Large numbers of waterfowl were back including a brightly coloured pair of shelduck more usually seen on the coast. At maximum flood, few birds were seen, many are divers and we wondered if it was depth, loss of water clarity or turbulence that drove them away.

Primroses are especially abundant this Spring and seem to have been flowering for longer than usual. The pink ones in the Churchyard Wildflower Area have been removed to avoid cross-pollination with the native primroses.

Two pairs of beautiful bullfinches are visiting the seed tray. They are secretive by nature and to see them raiding the feeder is unusual; slightly aggressive to other birds and each pair intolerant of the other, they are lovely visitors and welcome.

Diana Tait and Rod Eldred



Kingsclere Film Club

It is possible we will be able to reconvene in June. We will be in touch once we have more information. Please make sure we have your contact details.

If you are interested in joining the Film Club as we re-start, please get in contact.

Stay safe and stay in touch.

John Sawyer (Chairman) 297221 or jrsawyer@hotmail.co.uk



Saturday 8th May 2021 10.00am–3.00pm

Saturday 15th May 2021 10.00am—3.00pm

Plants For Sale

Large range of fantastic plants and hanging baskets at competitive prices

Local artisan craft stalls. Debit cards accepted. Cash for some stalls

Location – next door to Cottismore Garden Centre. We are just off the A339 between Headley and Kingsclere.
Our post code is RG20 4SY



KINGSLERE VILLAGE CLUB

It is Spring and the Club Trustees are feeling optimistic!

WELCOME BACK

We are really looking forward to welcoming back our regular classes and activities from May 17th, assuming the Government's road map out of lockdown is still going to plan. A few classes (for children) have already been able to start and it is lovely to see the Club being used for the benefit of local people again. It is good to have the Library open, thanks to the hard work of their volunteers.

MORE GOOD NEWS

The Festival Players, who are booked to perform Henry V in the garden on August 24th, have held their fee the same as previously (despite their very difficult year) so you will be able to enjoy live theatre at 2019 prices.

BEHIND THE SCENES

Various projects have kept us busy during lockdown. With the roof and garden works completed we are turning our attention the energy efficiency project (which will take time to finalise) and getting to grips with some new software. As always, we are keeping abreast of the Covid-19 regulations and guidance to ensure all activities are as safe as possible.

100 YEARS

It has been a strange start to our Centenary Year, but we are determined to celebrate on July 17th so look out for further details in next month's Tower.

Helen 297390 or events@kingsclerevillageclub.co.uk

WHERE *DID* ALL THE HEADSTONES GO?

During lockdown I've been sorting some Kingsclere photos, one topic being St Mary's churchyard, which has led me to wonder where all the headstones went?

Prior to 1966 when the churchyard was deconsecrated and levelled there were some 365 monument inscriptions recorded, now on a spreadsheet, out of these: 32 are in their original positions

50 were cut down and line the south side of the path from Swan St

15 were cut down and line the north side of the path from Swan St

24 are laid sideways plain side outwards and facing the east end of the church

That's 126 accounted for –so where did the other **240** or so headstones, gravestones and footstones go?

Some ended up in local gardens as paths. Across the road Priory House had 14 or so laid, smaller footstones with initials rather than the larger headstones. There must be many more around, if anyone has any then I would love to see, or a photo?

Two in particular I would like to find are:

- George MANNING (died 1863 age 35), trainer of 2 Derby winners to Sir Joseph Hawley, before John Porter.
- William & Mary Alice HOLDING, (died 1921 and 1918 respectively), whose children gave us the Village Club in George Street, 100 years ago.

Look forward to any replies!

Gareth Martin, Kingsclere Heritage Association
GarethAlanMartin@gmail.com tel: 07796 217840

Kingsclere Almshouses Charity

Applications are now being taken for a one bedroom bungalow that has become vacant in Kingsclere, suitable for a single person or a couple. The bungalow will be available early Summer.

Applicants must be living or working in the parishes of Kingsclere, Headley, Ashford Hill or within a two-mile radius.

Please apply in writing for an application form to The Clerk, Russell House, Ashford Hill Road, Headley, RG19 8AB, or email kingsclerecharities@iname.com

The Church Pages



Who would have thought that having a haircut would be quite so welcome?! And sitting shivering outside with family and friends was also much anticipated. The changes in lockdown restrictions have made a big difference to many of our lives, bringing a little bit more of normality back after so long.

And we hope that this month more may open up as vaccine numbers continue to increase and covid cases continue to decrease. There seems to be some hope on the horizon after some very, very bleak months.

For Christians, this month sees the arrival of Pentecost, the Sunday when Christians remember the coming of the Holy Spirit on the first disciples. They had had a turbulent few months as they watched their friend, the One they had given up so much for and had believed to be the Anointed One of God, arrested and condemned to death. They saw Him executed by Roman crucifixion, an awful sight to behold, and felt the shame of running away at His hour of need. But then Easter brought an empty tomb and their lives filled with Jesus again. He met with them, continued to teach them, finally telling them to wait until they were “*clothed with power from on high*”. Shortly after this, Jesus ascended into heaven leaving them staring up at the sky. They did as they were told for once and waited. On the day of Pentecost, they were together, when they heard a sound like a violent wind, and saw flames of fire appear and rest on their heads. Then they were filled with the Holy Spirit. This was the power that Jesus had spoken of, and immediately the church grew rapidly, with more and more inviting Jesus into their lives and finding themselves filled with His Holy Spirit.

And that same Holy Spirit is active in the world today moving many to invite Jesus into their lives. The Bible tells us that Jesus says, “*Here I am! I stand at the door and knock. If anyone hears my voice and opens the door, I will come in and eat with that person*”.

As things continue, we hope, to open up, might we also hear the knock on the door of our hearts and welcome Jesus in, receiving His Holy Spirit as a constant companion through whatever else we may face in the coming months.

Blessings,

Ben

St Mary's Church Sunday Worship in our Churches



MAY

We are pleased to be able to worship in person again in our church buildings. Our churches have followed government and Church of England guidelines and continue to review the regulations as they change.

Services in our churches in May will be as follows:

	9.30am	10.30am
Sunday 2 nd May		Holy Communion St Mary's, Kingsclere
Sunday 9 th May	Morning Worship St Peter's Headley	All-Age Worship St Mary's, Kingsclere
Sunday 16 th May	Morning Worship St Paul's, Ashford Hill	Morning Worship St Mary's, Kingsclere
Sunday 23 rd May	Holy Communion St Paul's, Ashford Hill	Morning Worship St Mary's, Kingsclere
Sunday 30 th May		Morning Worship St Mary's, Kingsclere

Thursday Worship

10:30am each week in the Church.

All are welcome to join a short service of prayers, hymns, and a reading. See our website or contact Emma 01635 299528 for more information

Private Prayer

St Mary's Church will be open each Thursday between 10am and 1pm for those that wish to use it for private prayer or quiet reflection.

Other Church Activities

We are reviewing our other activities and opening back up where possible. Please continue to look out for notices on email (contact 07422687125 or administrator@stmaryskingsclere.co.uk if you are not signed up to our mailing list). Our online calendar is also updated regularly so please look there for the most up to date information.

www.stmaryskingsclere.co.uk

Lighting up St Mary's

The sight of St Mary's Church when it is floodlit is truly beautiful. Many people sponsor these lights (£12 per evening) to celebrate an occasion, such as a birthday, wedding, anniversary, christening, or some other special day in their lives. To book, contact Emma, our Church Administrator on 0779 0934972.



May

4th	Loving memories of Moira on her birthday.
5th	Remembering our special fathers - Richard Gresham and John Mussett. Missing you so much, love Clive and Sarah
31st	Remembering Hazel Soper, a dear Mum, Grandma and Great Grandma on her birthday

Kingsclere Methodist Church

Services for May:

Sunday 2 nd May	Section Service (on line) Revd Rachel Borgars
Sunday 9 th May	No Service
Sunday 16 th May	Morning Worship with Holy Communion. Revd Rachel Borgars
Sunday 23 rd May	No Service
Sunday 30 th May	Morning Worship. Led by Maggy Wallace

All Services begin at 10am

We look forward to seeing you.

Wendy Morgan Senior Steward 297538

PROPOSED RECIPE BOOK

St. Mary's Church is raising funds to put towards the much-needed drainage project and refurbishment of the Kingsmill Room. We have received promises of funding from a couple of local organisations but these are dependent on us raising funds ourselves. Over the years the Kingsmill Room has often been used for social events and we have always had much fun and fellowship when food has been involved.

So we thought it would be a great idea to raise funds by compiling and selling a Recipe Book. We have already started the collection with recipes which have been used for Care Group Lunches, St. George's Day Lunches, Coffee Mornings, etc.

If you feel you could contribute a favourite family recipe then I would be pleased to hear from you. Just email the recipe to me with a brief description as to why this is a favourite. The deadline for entries is Friday 23rd July.

At a later date, we shall be asking for donations towards the cost of printing and there will be opportunities for local businesses to place an advertisement in the book.

All help will be gratefully received.

Pam Kitch, 01635 299743, pamkitch16@gmail.com

200 200 200 200 200 200 200 200 200 200 200 200 200 200

St. Mary's 200 Club was started many years ago to raise funds to help with the running costs and maintenance of our village church. Nothing has changed – we still require funds to help with the up-keep of the building (especially for the damp problems in the Kingsmill Room). Everyone can help. To become a member costs just £1.00 per month (payable in advance) and there is a chance of winning the £50.00 prize draw. You can purchase more than one number to increase your chances of winning. If you would like to be a member then please contact us and we can explain further.

The April Draw for the 200 Club was at The Crown Market on Saturday 3rd April 2021

The winner was: Andrea Hallam – No. 115. **Congratulations, Andrea**

Andrew and Pam Kitch
pamkitch16@gmail.com andrewkitch16@gmail.com 01635 299743

**IT IS OFFICIAL
ST MARY'S VILLAGE FETE IS BACK!
Bank Holiday Monday, 30th August 2021**



A small committee has been formed to ensure that The Fete is back again this year.

As well as raising much needed funds – we plan to make the 2021 Fete a celebration of village life. We need to express the gratitude we all have for everyone in our village who has shown fortitude, compassion and kindness during various Lockdowns.

To make The Fete a success, we are appealing for help from the wider community. In particular we need volunteers for:

- * Someone with a Food Safety Certificate willing to man the BBQ
- * A Registered First Aider to be on duty between 12 noon and 4 pm.
- * Stallholders for: Book Stall, Face Painting, Ice Creams, Cake Stall and Plant Stall.

General help required for setting up and clearing away, relieving other stall holders, helpers for Bric-a-Brac, Toy Stall, Refreshments, Cakes and Accessories.

Please think of us when doing your Spring Cleaning – we will accept donations of Bric-a-Brac and good quality ladies, gents and household accessories. You can let us have these at any time from now until one week before the fete – to ensure that we are Covid compliant!!

Also – if you have any contacts who can help with raffle prizes, sponsorship, etc., we would be pleased to hear from you. Suggestions for sideshows would also be appreciated.

LET US MAKE IT AN AMAZING EVENT.

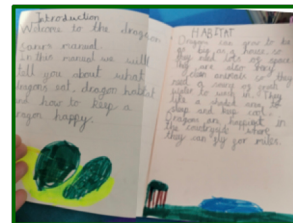
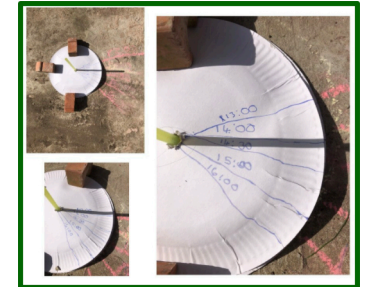
Andrew or Pam Kitch 01635 299743 or Sarah Mussett 01635 291900

Kingsclere CE Primary School



We have been busy making many exciting plans for the last term of this academic year, one we hope to be spent each day in school rather than remotely!

Earlier this year we launched our new Curriculum and we are looking forward to seeing the latest Enquiry Questions explored by the children. It has been delightful watching the children deepen their thinking and discover new things in such creative ways this year, for example our Sundials during our 'Grounds Day' learning outdoors.



One of our most recent ventures included an escaped dragon on the school field following the hatching of eggs discovered in the classroom! This led to some incredible writing from our Year 1 and Year 2 children.

Later this month we look to launch our new school website. We have refreshed our school logo and updated much of the information about the school, including photographs, to share the wonders of our village school in action. Please do take a look and let us know what you think!

www.kingsclereprimary.com

Hoping you all keep safe and enjoy exploring the village once more as lockdown eases.

Best wishes,
Mrs Melrose, Headteacher

Kingsclere Village Bunnies Baby & Toddler Group



With the world slowly reopening, it's time for bunnies to get recruiting! We are sure there will be lots of young bunnies keen to join us whether they are new to the world, new to the area or old hands. In order for us to welcome all (within government guidelines), we do need some new volunteers to join our committee.

To be a committee member, you don't need to bring a child to the group, just to have an interest in supporting our operation. We are a friendly group and would welcome anyone interested in joining us, whether it is to help with teas and coffees, prepare arts and craft activities or dazzle us with your amazing nursery rhyme performances at song time! Please get in touch via email, or through our Facebook page.

We don't yet know when we will reopen, but keep an eye on our FB page or email to ask.

Where: The Village Club, George St

When: every Tuesday, 9am-11am (check first that we have restarted)

Cost: first visit free. After that, £1 for bumps and unweaned babies. £2 for first child (including snack donated by Swan St Stores) and 50p for additional children.

Check out our Bunnies Facebook site – as well as our local buying and selling site “Kingsclere Bunnies Preloved”, where local mums often have bargains to pass on.

villagebunniestoddlergroup@gmail.com



The Fieldgate Centre is run by Kingsclere Community Association, a charity (No 1168366). All residents of Kingsclere over 18 are automatically members of the association, an organisation that relies on volunteers to run it. Be part of it, your support makes a difference.

Kingsclere's Bounce Back

KCA, along with other village organisations, thought that it would be a good idea for the community to come together during the next year in a series of shared activities. We have now managed to secure a matched funding grant from Greenham Trust with a view to venues and local groups co-operating together for the community. We will shortly be inviting local venues and organisations to take part in a steering group.

To realise this grant we do need matched donations so if you would like to support please go to the Good Exchange website - project 18767 - Kingsclere's Bounce Back

Hooray We are Opening Up!

From the beginning of May the office will be open at the usual hours. Some sports teams are already operating and others are about to start including: adult football, cricket, rugby minis, rugby training sessions and netball. Details of the return of clubs and classes returning will be posted as soon as possible.

Easter Trail

Several hardy souls braved the chilly weather over Easter to take part in the trail. The winning team, after a draw of correct answers, was “Puppy Pillow Fort”. The art competition winners were Wesley (8 years and over) and Euan (under 8).

Volunteering Can be Rewarding

Just a few hours from time to time can be useful to us. However, if you are on furlough or unemployed and are able to give us 10 hours of volunteering, we will provide you with a written recommendation to help your return to work.

fieldgatecentre@outlook.com

telephone 01635 298497

www.thefieldgatecentre.co.uk



KINGSCLERE MINIS RUGBY CLUB



Great news KRFC Minis is back on - 10:30am on Sundays at the Fieldgate Centre, Kingsclere RG205SQ.

Minis Rugby is currently for Ages 4 to 11 years (but please feel free to contact us regarding any other age groups).

We are running sessions with a revised format based on the latest approved RFU Covid-19 guidelines and following all relevant risk assessments. All activity is outside, all training equipment is cleaned before and after each session and we have hand sanitizer stations set up for each group to use every 15 mins.

We look forward to seeing as many of you as possible at the sessions over the coming weeks, but if you don't yet feel comfortable to do so then we look forward to seeing you as soon as you do.

For further information regarding the Kingsclere Minis please contact Nikki Shouesmith on 07958 568620 or email secretary@kingsclererfc.co.uk

Please follow us on Kingsclere RFC Minis



KINGSCLERE RUGBY CLUB

Teamwork, Respect, Enjoyment, Discipline,



Kingsclere Rugby Club would like to invite you to come along and join us - inclusive of all ages 18+ and no matter what level of experience you have you will get a great welcome.

Due to Covid-19 restrictions we are working through the RFU Return to Play Roadmap. We are currently at Stage D of a six-stage recovery plan allowing Touch Rugby and must wait until Stage F before we are back to full-contact rugby.

We train from 7:00pm on Wednesdays at The Fieldgate Centre, Kingsclere RG20 5SQ.

For further information please contact Aurie Woodley on 07733 367900 or email info@kingsclererfc.co.uk, or find further details at www.kingsclererfc.co.uk

Please follow us on Kingsclere RFC

Whitchurch Silk Mill

Roadmap Re-opening - All being well, by the time you're reading this the Mill will have been able to open its outdoor café and will be planning to reopen the whole site on 17 May.

Help from the Culture Recovery Fund

We were delighted to have been among the recipients benefitting from the latest round of awards from the Government's Culture Recovery Fund. The Mill has been granted £50,000 to help it reopen, recover from the losses sustained since March 2020, and become more resilient by being able to invest further in weaving and community engagement. Our exciting plans include creating a special indoor and outdoor summer exhibition, developing digital engagement and building up our heritage conservation resources.

Objects in Focus

More Objects in Focus episodes are available to view on our YouTube channel. They focus on shuttle damage and intriguing loom clues.

Regular Events

Our regular events including Mini Millers, Young Millers and Pins & Needles will resume as soon as we're able.

info@whitchurchsilkmill.org.uk

www.whitchurchsilkmill.org.uk

Tel: 01256 892065



For all homing, fund raising and volunteer enquiries;
Telephone: 0345 260 1501 or
Email: sylvia.cp@outlook.com
To view all cats currently up for adoption
visit andover.cats.org.uk



This striking little cat is Cassie, she is just under a year old. She has had some medical problems but this is now under control with medication so she is ready to find her new home. She is very affectionate and playful. Fundraising has been difficult for our little branch throughout the pandemic and a lot of the events we would normally take part in are still postponed this summer. If you would like to help our branch, we are currently trying to raise money through our eBay account. Just search Andover Cats Protection on ebay to find our listings. All money raised goes straight to helping the cats and kittens in our care.

May In The Garden

Glorious May is upon us again, with late flowering bulbs and most trees in full leaf. Tulips are a joy this month and a firm favourite. If you require the bulbs to flower for several years keep to the single flowering varieties as others are not so reliable. Tulips look wonderful growing through Forget-me-nots, but you have to not mind them self setting, you will probably have Forget-me-nots in the garden for life. Remember, tulips like good drainage so when planting pop some grit into the ground before putting the bulbs in.

Even with the warmer days there is still a possibility of frosts at night and this can affect the fruit trees. Often we forget this when in the late summer we discover the trees have a poor crop.

There are plenty of pests and diseases around now that the weather is warmer. Try to keep plants in good condition as this helps to prevent problems. Drying out can be stressful to plants and they become candidates for all the nasties in the garden so watering will be helpful. Keep checking plants for the vine weevil grub, enemy number one. They will attack roots of plants in soil that has dried out.

Lawns should be looking their best now particularly if the winter moss has been removed. Feeding is a good idea as the grass will need cutting more often this month. Always read the instructions on the packaging as fertilizers do vary.

The early flowering shrubs will need pruning; Kerria japonica, Forsythia, etc. Time to be tying climbers and carry on staking perennials, prune Pyracanthas and trim formal evergreen hedging. Keep dead heading spring flowering bulbs and feed with Potash. Sow biennials including Sweet Williams and Wallflowers. Be aware that Wallflowers are from the brassicas family and it is advised not to grow them in the same piece of ground year after year as they are subject to clubroot. This will persist in the ground for many years. Hoe regularly to keep weeds down, preventing them from germinating and killing them while they are still small.

Tidy Spring flowering Perennials like Doronicums and Pulmonarias. They can be divided if required but will need to be fertilized and watered afterwards.

It is time to plant out leeks, marrows, courgettes, sweetcorn and brassicas. Sow Runner and French beans, and if frost is forecast the tender plants will need protection. Broad beans will need the tops pinched out to discourage the blackfly.

This is the month when we have so much to enjoy in the garden; the Lilac Rhododendrons, foxgloves Aquilegias and many others.

Denise Allen

Kingsclere & Headley Woodlands W.I.



The month of May marks the end of each functioning year for our local W.I. - no speaker needed at our May *Annual Meeting*. Elections for the local committee take precedence; all to be done via Zoom this year. At *Hampshire County Federation* level however, results are through: The new Hampshire County Chairman is Helen Carter, who takes over from the outgoing Chairman Gina Ireland whose leadership during the world's most heinous pandemic was surely one of the most difficult in W.I. History. Helen Carter pays handsome tribute to the strength & resilience shown by her predecessor in the path of such a tsunami of change.

The word 'change' is synonymous with the pandemic. Systems and routines battered and bent, peoples lives & livelihoods delayed, disrupted or distorted. These issues trigger negative reactions as we weigh up our aspirations and our chance of achieving these against such odds even while comparing them with blatantly unfair disparity that favours the few, eg (1) stock markets worldwide have managed to hit new highs, and (2) Forbes Magazine's annual 'Billionaire Poll' lists a record-breaking 2,755 billionaires. How does *that* gel with our concept of 'success'? It shouldn't. It must not. A greeting card received in the 80s, framed and treasured ever since, quotes Ben Sweetland:

SUCCESS IS A JOURNEY, NOT A DESTINATION. The late Arthur Ashe, famous US tennis champion, is recorded as quoting that in the 1970s adding, "The '*doing*' is often more important than the *outcome*."

We in the Kingsclere & Headley Woodlands W.I. Are comforted by that philosophy. As seen, we have kept in touch with all of the speakers whose bookings were perforce cancelled and we have learnt how these hard-working people have re-imagined or re-directed their lives in whatever way possible to each individual. We salute them all & we wish them well along their continuing journeys.

Nova Saunderson

May 1921 was a busy time in the world

- May 3 The province of Northern Ireland is created within the United Kingdom.
- May 5 Chanel No. 5 perfume launched by Coco Chanel
- May 5 William Friese-Greene, British photographer and inventor (motion pictures), dies at 65
- May 5 Only 13 paying spectators attend the football match between Leicester City and Stockport County F.C. in England, the lowest attendance in The Football League's history.
- May 10 The first performance of Luigi Pirandello's Six Characters in Search of an Author (Sei personaggi in cerca d'autore), at the Teatro Valle in Rome, met with a mixed response, provoking a brawl.
- May 11 British cotton weavers and spinners had their wages reduced by 30% by their employers.
- May 15 The British Legion is founded as a voice for ex-servicemen by merger of the Comrades of the Great War, the National Association of Discharged Sailors and Soldiers, the National Federation of Discharged and Demobilized Sailors and Soldiers and the Officers' Association, under the Presidency of Earl Haig.
- May 16 The Communist Party of Czechoslovakia is founded.
- May 22 In the first golf international between the two countries, the United States beats the United Kingdom 9 rounds to 3.
- May 23 to July 16 The Leipzig War Crimes Trials are held in Germany.
- May 23 Humphrey Lyttelton, English jazz musician is born
- May 25 Irish War of Independence: The Irish Republican Army occupies and burns The Custom House in Dublin, the centre of local government in Ireland. Five IRA men are killed, and over 80 are captured by the British Army which surrounds the building.
- May 27 The state of emergency in the United Kingdom was renewed by royal proclamation in response to the continuation of the miners' strike.
- May 31 to June 1 Tulsa Race Massacre (Greenwood Massacre): Mobs of white residents attack black residents and businesses in Greenwood District, Tulsa, Oklahoma. The official death toll is 36, but later investigations suggest an actual figure between 100 and 300. 1,250 homes are destroyed and roughly 6,000 African Americans imprisoned in one of the worst incidents of mass racial violence in the United States.

THE KINGSCLERE TOWER DIRECTORY

POLICE, FIRE or AMBULANCE

Police Enquiries/Information

Emergency 999

non Emergency 101

Kingsclere Health Centre:

01635 296000

North Hampshire Hospital, Basingstoke

01256 473202

Parish Council: 37 George Street (see page 2)

01635 298634

Dial-a-Ride

01256 462101

CHURCH CONTACTS

St. MARY'S CHURCH:

Vicar Rev Ben Read, The Vicarage, Foxs Lane

01635 298471

Church Wardens:

Sarah Mussett
sarah.mussett@hotmail.co.uk

01635 291900

Administrator:

Emma Rivers
administrator@stmaryskingsclere.co.uk

07422 687125

METHODIST CHURCH:

Chief Steward Wendy Morgan

01635 297538

Secretary & Hire of Hall Jeanette Billington

01635 297585

ROMAN CATHOLIC:

Rev Patrick Tansey
tadley@portsmouthdiocese.org.uk

0118 9814572

Bas & Deane	01256 844844	Kingsclere Library	07899623872
Buses	0345 8101000	Swan Street P O	01635 297035
Trains	0845 748 4950	Vet	01635 297557 or 40565
Gas Emerg.	0800 111999	Dentist	01635 299981
Chemist	01635 298419	Age Concern Local Agent	07813368259

BOROUGH COUNCILLORS

Ken Rhatigan 07850530319

cllr.ken.rhatigan@basingstoke.gov.uk

COUNTY COUNCILLOR

Tom Thacker 01264 738464

tom.thacker@hants.gov.uk

MP for N.W. Hampshire:

Kit Malthouse 01264401401
2, Church Close, Andover, SP10 1DP

kit.malthouse.mp@parliament.uk

There is a more comprehensive list of local contact numbers on the Parish Council website. Go to www.kingsclere-pc.org.uk/directory