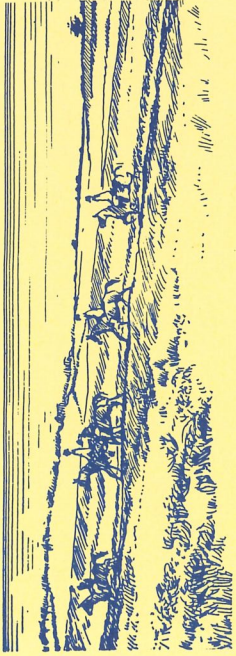


Molland Means



Makes most welcome

Open Spaces

Leisurely Walks and Rides

Local produce

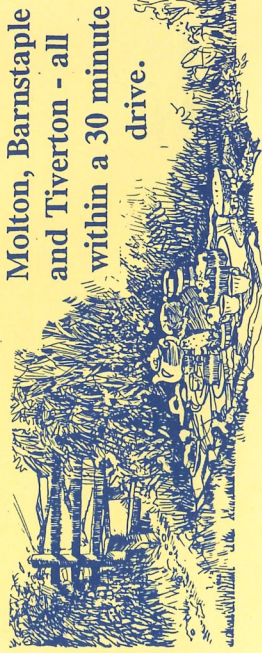
All year round activities

Nature at its very best

Devon's cleanest air

Molland is an excellent location to stay, with farmhouse and inn accommodation, home cooking and local produce. From Molland you can visit the North Devon coast with its wonderful sandy beaches, Exmoor and the market towns of Dulverton, South Molton, Barnstaple

and Tiverton - all within a 30 minute drive.



For more information contact:

Tel: 01769 550264

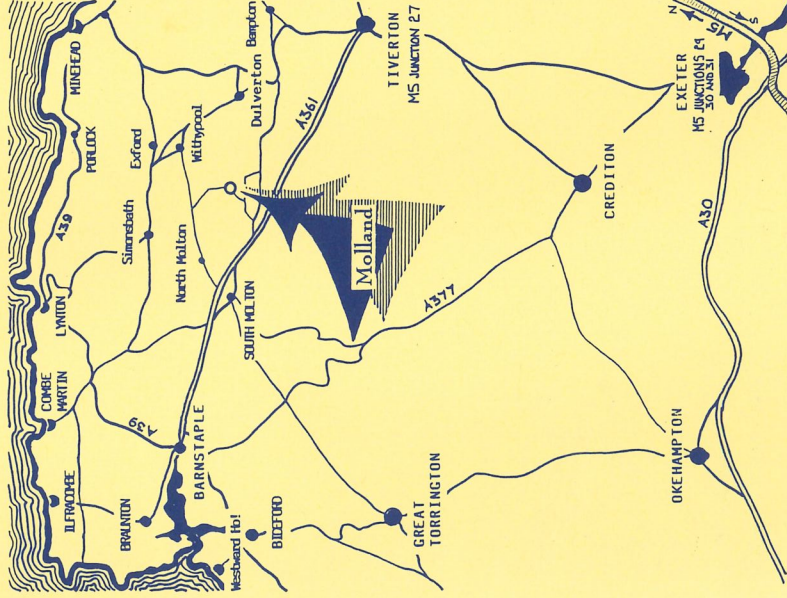
E-Mail: info@ideva.co.uk

Web Site: www.ndeva.co.uk/molland

Tourist Information Centre:
South Molton - Tel: 01769 574122

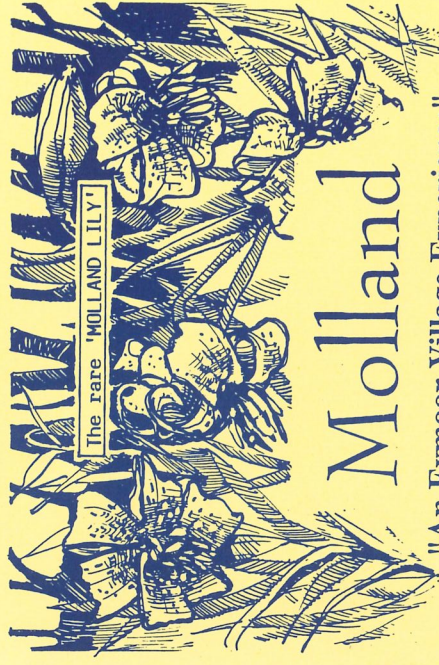
Opening Hours:

Easter to Oct: 9.30-4.30 Monday to Saturday
Nov to Easter: 9 - 5 Monday & Saturday



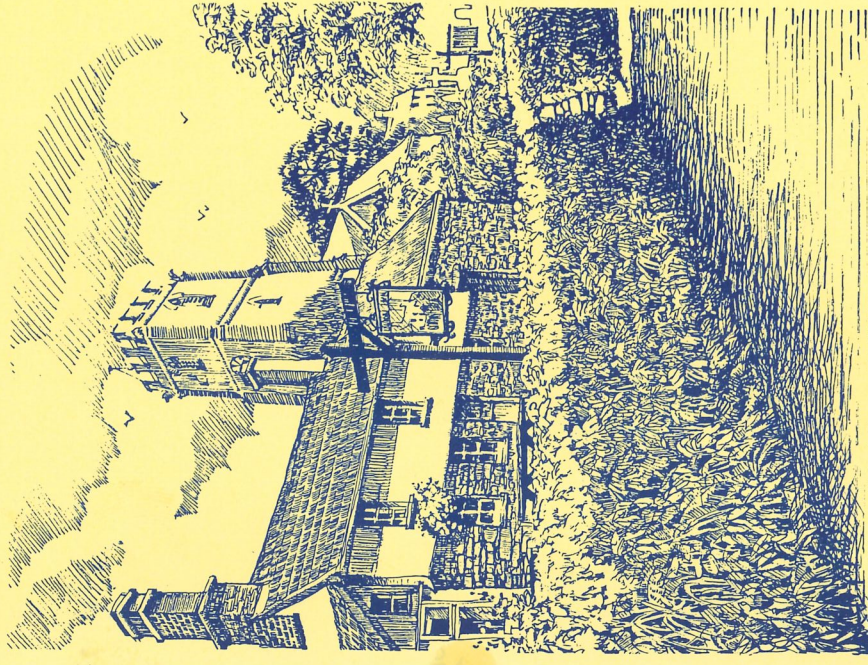
Funded by:
LEADER
The Molland Estate
Local Businesses

Greater Exmoor LEADER Project



Molland

"An Exmoor Village Experience"



South Molton, North Devon

Route 1 - Molland Family Walk

2 miles

(Allow approximately 45 minutes following route in clockwise direction)

Why not start with a cup of coffee or lunch at the London Inn Public House ?

Start - London Inn, Molland

At the Churchyard to the south of the public highway go through the hunting gate and across stile. In the churchyard take the right hand gate and follow hedgeline south.

N.B These hedgebanks are some of the oldest man made features in the landscape where you can usually see hazel, oak, ash, hawthorn, wild strawberries and are home to a multitude of animals, birds and insects.

Go through the next gate and walk diagonally across field to stile in corner of Bond Wood. Follow the path at the North end of Bond Wood, go over stile and walk diagonally in south easterly direction to the corner of the field, over the sleeper bridge and onto public highway.

At public highway turn South and follow the road to Severn Acre Cross, then go North taking the bridleway into the Forestry. At hardcore turn at the top of the track and follow east, at next junction follow North, parallel with field hedge. Go through the gateway into the open field and follow hedgeline North towards Molland village. At public highway turn North along metalled road towards Molland village.

Why not finish with a cream tea or an ice cream at Molland Village Stores or have a meal at the London Inn.

Route 2 - Molland Explorer Walk

6 miles

(Allow approx 2hrs following route in anti- clockwise direction)

Start - London Inn

At Churchyard to S of public highway, go thro hunting gate & over stile, in yard take R- hand gate and follow hedge S. Go thro next gate and walk diagonally across field to stile in corner of Bond Wood. Follow path at N end of wood, over stile and walk diagonally SE towards corner of field over sleeper bridge onto road. Go over stile opposite in E direction past N end of Zeal Wood. At NE corner of wood head diagonally across and over stile in SE direction.

Turn N towards Pulworthy Farm along unmetalled track passing farmhouse on W side. Before reaching T junction turn E through gate, follow hedge to your NE side and round to SE corner of field, over stream, thro gate and head E to road. At road turn N and follow past Bremley Farmhouse onto Crossroads. (The first mineral mines were dug at Bremley Crossroads during the Elizabethan period and were primarily exploited for copper).

Take bridleway N towards Molland Moor, thro gate and turn W. Follow hedge and at next junction of gates turn N along hedge, pass thro gate onto Molland Moor to signpost. Turn W to Smallacombe Farm along S boundary hedge, go over bridge, thro gateway and proceed S along track passing farm on E side. (Smallacombe is recorded as a farm as early as 1244.)

At T junct take path opposite, through gate in SW direction, over bridge and turn S, follow marker posts bearing SW. Go across road, thro hunting gate and walk W to next gate, go thro gate at farmyard and follow signs past Bowchurch Farmhouse into village.

Route 3 - Molland Cycling Trail

8 miles

(Allow approx 2½ - 3 hrs leisurely cycle)

Start - London Inn

Head east out of Molland.

At Moor Lane Stone Cross head for Stone Bremley, past the blue Methodist Church. For next mile or so the route follows some lovely narrow lanes that climb and drop around tight corners. (Take care with oncoming traffic.)

At Latchgate Cross head for Stone Bremley continue heading for Bremley at Stone Cross and Bremley Cross (This is a wonderful freewheel down past the pheasant pens to the next junction).

At Beere Cross head east to West Anstey and at Balls Corner continue towards W Anstey. At West Anstey Cross turn sharp left and head up to Dulverton until you reach the bottom of East Anstey Common (no fences, rough moorland grazing). Continue eastwards along lane that runs below common until you reach Badlake Moor Cross, by the cattle grid. At Badlake Moor Cross continue to head for Dulverton, at Five Cross Ways turn sharp left and head towards Molland.

N.B It will take another 15-20 minutes until you are on top of the world upon East Anstey common. Whilst riding along the ridge top route look out for Exmoor ponies, red deer and across to Dartmoor on the southern skyline.

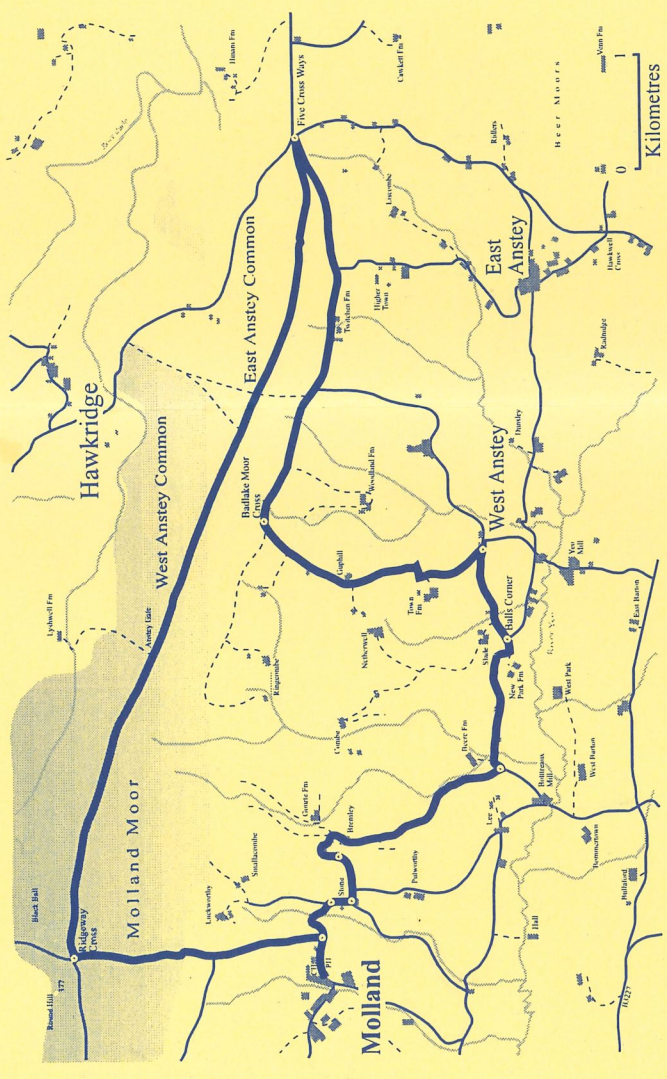
At Ridgeway Cross turn left and descend steeply to Molland (freewheel heaven).

Why not reward yourself with an ice cream at Molland Village Stores or enjoy a well earned drink at the London Inn.

Discover the hidden beauty of Molland

Whether you have just one hour or hours to enjoy the peace and tranquility of this hidden corner of Exmoor why not take the opportunity to enjoy the beautiful scenery surrounding this unspoilt village on one of the walks or cycle ride below. Both the walks and the cycle ride take in some of Exmoor's most attractive wooded combs and open moorland where you can often see Exmoor ponies, red deer and stunning views across to Dartmoor. The Molland Village Stores and London Inn will happily ensure that you are either well fuelled for your trip or well replenished on your return.

Cycle Trail

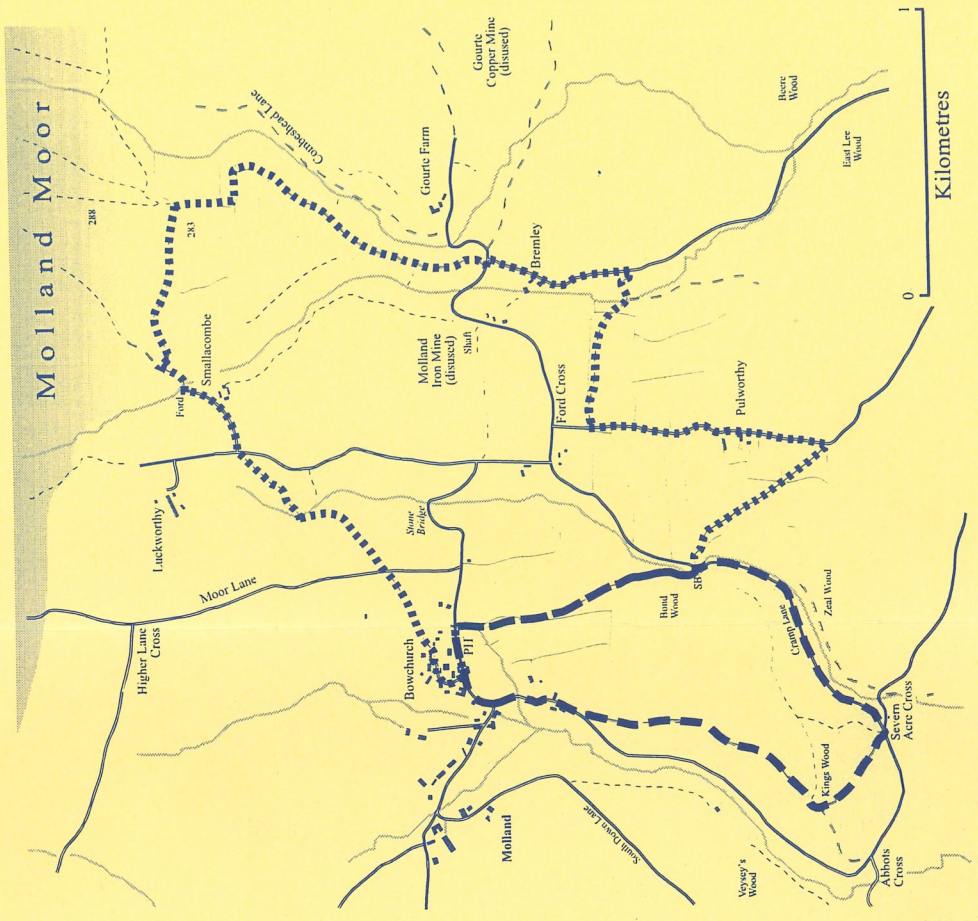


- Cycle Trail
- Family Walk
- Explorer Walk
- Road
- Track
- Path (unmarked)
- Water Feature
- Buildings
- Moorland



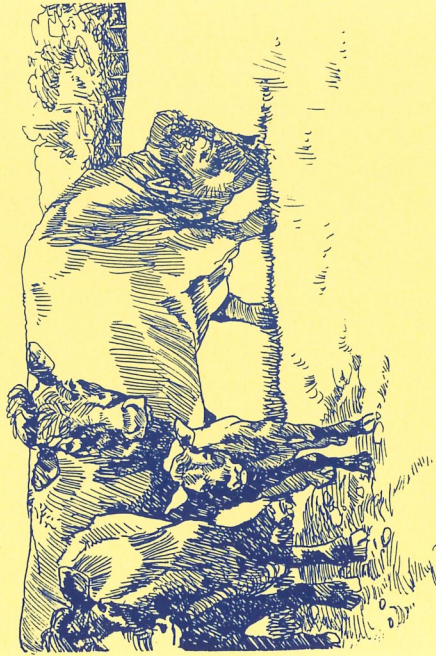
Not all field boundaries are shown
 Crown Copyright reserved. All rights reserved.
 Exmoor National Park Authority Licence
 No: LA08906L/99/04

Family and Explorer Walks



Not all field boundaries are shown
 Crown Copyright reserved. All rights reserved.
 Exmoor National Park Authority Licence
 No: LA08906L/99/04

Molland - an unspoilt Exmoor farming village, unchanged through time, nestling under heather moors. Discover Molland down flower filled Devon lanes, just minutes from the M5 motorway link road to Barnstaple. A working Estate village with a unique medieval church, its own traditional village stores and post office, historic coaching inn, thatched and slate cob cottages. A range of local walks take in the open moor and deep sheltered combes; a countryside rich with buzzards, native red deer and Exmoor ponies.



Molland is famous for the North Devon Red Cattle bred by the Quartly family. Their deep blood-red colour giving the cattle the name "Red Rubies" and "Rubies of the West". The Quartlys rented their profitable acres from Sir N. W. Throckmorton, Bart., whose descendant, Mrs. Clare Throckmorton continues to own a large part of Molland, including the open heather moorland with stunning views across to Dartmoor

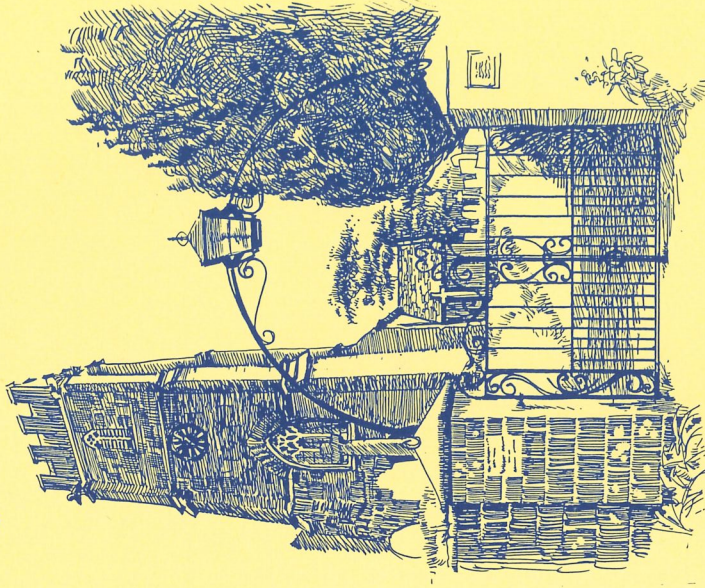
Molland offers you:

- Walks long and short
- Pony Trekking
- Horses for hire
- Abundant bird watching
- Exmoor Horn sheep
- Champion Devon Red Cattle
- Red Deer
- Rare Exmoor Ponies
- Farmhouse B & B's
- Traditional Inn Accommodation
- Caravan Club Site
- Bar & Restaurant Meals
- Cream Teas
- A unique medieval church with 18th Century furnishings
- The Millennium Garden
- Country Sports
- And much, much more

[See enclosed insert for additional information for accommodation and activities.]



Molland's Church of St. Mary is a 15th century replacement of an earlier building of which only the Norman font and two ancient bells remain. It has box pews and a striking three-decker pulpit. There are a number of fine monuments, mainly to the Courtenay family in whose ownership Molland Bottreaux belonged, and through marriage to the Throckmortons has remained in this family since the 1400's.



Village Events

- Easter - Spring Flower Show
- Flower Festival - bi-annually
- August - Fun Day
- August - Flower & Vegetable Show
- September - Bell-Ringing
- October - Harvest Festival
- December - Candlelight Carol Service