

# WHATLINGTON COMMUNITY GUIDE 2026



Produced by: **WHATLINGTON COMMUNITY CONNECTORS**  
Supported by: **WHATLINGTON PARISH COUNCIL**

Battle based | No call-out charge | Five-star Google reviews ★★★★★

# APPLE AERIALS

THE COMPLETE TV SERVICE

- TV WALL MOUNTING
- AERIAL INSTALLATION
- STARLINK INSTALLATION
- WI-FI DISTRIBUTION
- CCTV
- FREEVIEW
- FREESAT
- SATELLITE
- COMMERCIAL INSTALLATIONS

07962 204 284 / 01424 575 802

info@appleaerials.co.uk

[www.appleaerials.co.uk](http://www.appleaerials.co.uk)

Recommended by  
Adams and Jarrett



# Jules Decorators

*Painting and  
Decorating  
since 1980*



Internal and external decorating  
Domestic & Commercial Properties  
References available

01424 870172

07930 318510

[www.julesdecorators.co.uk](http://www.julesdecorators.co.uk)

[info@julesdecorators.co.uk](mailto:info@julesdecorators.co.uk)

# A strong community is a healthy community

It's easy to see why Whatlington is a popular place to live. Just over 300 residents enjoy the ancient countryside criss-crossed by footpaths, steeped in history and, so far at least, protected from large-scale development as part of the High Weald Area of Outstanding Natural Beauty.

There are drawbacks, however.

Strung out along two busy roads there are no accidental meeting places where residents might stop and chat – no village green, no shops, no school . . . not even any pavements.

But with a pub (fingers crossed it will reopen soon), a church, a village hall and the efforts of volunteers including the Community Connectors, there are occasions, big and small, when villagers can come together.

These range from the annual fete to regular craft sessions, from the Christmas pageant to antiques fairs

It's important we make the most of these activities: a strong community provides a sense of belonging, reduces isolation and offers vital support during tough times.

This publication is a part of the effort to make Whatlington a thriving community.

Keep it close at hand for future reference.

**Steve Turner**

**Editor, Whatlington News**

## INSIDE

Parish, district and county councils	5
Local MP	5
GP services, hospitals and pharmacies	7
Defibrillator	7
Emergency services	8
Public transport	9
Utilities	9
Milk and paper deliveries	9
Recycling and refuse collection	11
Schools	13
Library	13
Vets	13
Village news	13

Download a pdf version for on-screen use at:

[www.whatlington.com](http://www.whatlington.com)

[www.whatlingtonparishcouncil.gov.uk](http://www.whatlingtonparishcouncil.gov.uk)

## Useful and informative guide that makes it easier to access services

The Parish Council is pleased to support this community initiative by Whatlington Connectors.

It is more than 10 years since its last publication and is a welcome addition to the promotion of local resources and businesses and a positive contributor to community engagement.

It is hoped that parishioners, old or new, will find it a useful and informative guide to

make it easier to access services from health to education, transport, local and national government, among others, that are available for residents to support and enhance their lives in this part of Rother and East Sussex. With this revival of the guide the council looks forward to its continuation as an annual edition in the years to come.

**Roger Fisher**

**Chair, Whatlington Parish Council**

*The Community Guide is published by Whatlington Community Connectors supported by Whatlington Parish Council. Every effort has been made to ensure details are correct at the time of printing. Neither party can endorse the services advertised or be held responsible for incorrect or out-of-date information. For more information contact [info@whatlington.com](mailto:info@whatlington.com)*

**GET INVOLVED:** help bring the community closer



# From antiques to wine tasting – let's get together



The Whatlington Community Connectors is a small group of village volunteers set up to provide varied and interesting events to bring residents together and make . . . connections.

Alongside the long-established village events such as the Christmas Pageant and Summer Fete, Whatlington Connectors has created many new activities.

So far, these have included:

- fairs – antiques and seasonal
- bake days and coffee mornings
- quizzes – topical and general
- craft mornings – art, flower arranging, mosaics, pottery,

**The Connectors are: Anne Smith, Pauline Lyon, Sandie Sullivan, Mike Tapsfield, Carol Turner and Steve Turner**

**JOIN US!**

[info@whatlington.com](mailto:info@whatlington.com)  
[steveturner807@gmail.com](mailto:steveturner807@gmail.com)

**Anne on 07771 994389 or  
 Steve on 07941 669678**

[www.whatlington.com](http://www.whatlington.com)

weaving

- Christmas events - cake decorating, wreath making, carols around the bar
- talks – health and historical
- cheese & wine tasting
- bingo.

At each event

money is raised for charitable causes – mostly local. To date the Connectors has donated more than £1600 for 18 charities.

To continue developing and to have a varied understanding of what the residents of Whatlington may want, there is an opportunity for villagers with passion and ideas to join this welcoming group.



**LOCAL AUTHORITIES: parish, district and county**

*Details correct as at April 2026 but subject to future local government devolution changes.*



**WHATLINGTON PARISH COUNCIL**

[whatlingtonparishcouncil.gov.uk](http://whatlingtonparishcouncil.gov.uk)

Responsibilities include:

- raising funds to support the work of the council through a precept as part of household

Council Tax bills

- commenting on planning issues as part of its statutory responsibility in the consultative process

- representing residents' views on matters involving district, county and national authorities

- improving community wellbeing such as road safety, grants to local organisations and supporting village-led initiatives.

**Chair:** Roger Fisher

**Councillors:** Simon White, Ben Clarkson, Amanda Davis, Sandra Sullivan.

**Meetings:** Third Thursday in January, March, May, September and November. Village Hall, Whatlington Road, 7.30pm (first 20 minutes open forum for residents to raise issues of concern).

**Planning meetings:** when required to discuss planning applications, Thursdays 7pm

**Annual Parish Assembly** is held in March or April in the village hall, 7pm with reports from representatives of village organisations and local authorities.

**Contact:** Clerk Tracy Dixon – 07352 341774 (9am-4pm Monday-Friday).

[clerk@whatlingtonparishcouncil.gov.uk](mailto:clerk@whatlingtonparishcouncil.gov.uk)

**Tree Warden:**

Martyn Hole [hole778891@gmail.com](mailto:hole778891@gmail.com)

**Footpath Warden:**

Bev Marks [bevm@hollyblue.net](mailto:bevm@hollyblue.net)



**ROTHER DISTRICT COUNCIL**

Town Hall, Bexhill, TN39 3JX

[www.rother.gov.uk](http://www.rother.gov.uk)

Responsibilities: district council tax and housing benefits;

planning decisions; community safety; economic development; electoral register; recycling and home energy efficiency; environmental health; parks; cemeteries; beaches; tourism, museums, arts, pest control.

The council operates a weekly email service giving information about refuse collection

dates and other services. To register email [www.rother.gov.uk/myalerts](http://www.rother.gov.uk/myalerts)

**Contacts**

01424 787000 or 01424 787868 (out of hours emergencies) [customer.services@rother.gov.uk](mailto:customer.services@rother.gov.uk)

Advice centre for Whatlington (north Rother)

01424 787478

[battlehac@rother.gov.uk](mailto:battlehac@rother.gov.uk)

Councillors for North Battle,

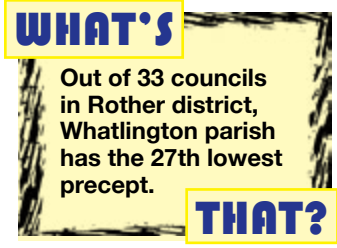
Netherfield and Whatlington ward:

**Contacts:**

Sue Burton

01424 775592 [clr.sue.burton@rother.gov.uk](mailto:clr.sue.burton@rother.gov.uk)

Kathryn Field 07900 430471 [clr.kathryn.field@rother.gov.uk](mailto:clr.kathryn.field@rother.gov.uk)



[clr.kathryn.field@rother.gov.uk](mailto:clr.kathryn.field@rother.gov.uk)



**EAST SUSSEX COUNTY COUNCIL**

[www.eastsussex.gov.uk](http://www.eastsussex.gov.uk)

Responsibilities: education, libraries, social services,

roads and transport, winter gritting, bus passes, public footpaths, trading standards, economic development.

**Contact:**

Councillor for Whatlington: Kathryn Field

07900 430471 [clr.kathryn.field@eastsussexcc.gov.uk](mailto:clr.kathryn.field@eastsussexcc.gov.uk)

[eastsussexcc.gov.uk](http://eastsussexcc.gov.uk)



**MEMBER OF PARLIAMENT**

Dr Kieran Mullan  
Conservative, Constituency Office. 29-31 Sea Road, Bexhill-on-Sea TN40 1EE

**Contact:**

01424 736861

[drkieranmullan.org.uk](http://drkieranmullan.org.uk)

GET INVOLVED: historic hall at heart of village life since 1888

# Place to gather for more than a century

The Village Hall was built in 1888 to serve the community as an educational resource – a library and a place to gather. Today the hall continues to act as a traditional community hub and is available to hire for meetings and events.

Registered as a charity in 1962, the management and maintenance of the hall is entrusted to the volunteer Whatlington Village Hall Committee.

The facilities include a main hall with a stage, fully equipped kitchen, wi-fi and accessible toilets. The hall can accommodate up to 80 people seated and 100 standing.

Hall hire includes the adjacent car park, which is the responsibility of Whatlington Parish Council and can be booked separately through the hall website (see *right*).

All hall and car park bookings must be made via [www.whatlingtonvh.org/about-us](http://www.whatlingtonvh.org/about-us)

## Contact:

[www.whatlingtonvh.org](http://www.whatlingtonvh.org)

Emergency number 07777581346.



The Village Hall Committee also arranges annual events as opportunities to bring the community together, while raising funds for the maintenance of the hall. These include the Traditional Village Fete, Twilight Serenade and the Christmas Festive Supper.

## HEALTH: GP surgeries, hospitals, pharmacies

### GP SURGERIES

#### Martins Oak Surgery

[www.martinsoak.co.uk](http://www.martinsoak.co.uk)

36 High Street, Battle, TN33 0EA

**Contact:** 01424 772060 or (emergencies) 01424 772263

#### Sedlescombe & Westfield Surgeries

[www.sedlescombeandwestfieldsurgeries.co.uk](http://www.sedlescombeandwestfieldsurgeries.co.uk)

The Surgery, Brede Lane, Sedlescombe, TN33 0PW

**Contact:** 01424 870225

Main Road, Westfield, TN35 4QE

**Contact:** 01424 751609

#### Oldwood Surgery & Battle Health Centre

[www.oldwoodsurgery.co.uk](http://www.oldwoodsurgery.co.uk)

Station Road, Robertsbridge TN32 5DG

**Contact:** 01580 880790

Battle Health Centre

Telham House, 13 Station Approach, Battle, TN33 0BF

**Contact:** 01580 880790

### HOSPITALS

#### Conquest Hospital

[www.esht.nhs.uk/conquest-hospital](http://www.esht.nhs.uk/conquest-hospital)

The Ridge, St Leonards-on-Sea, TN37 7RD

Contact: 0300 131 4500

#### Bexhill Hospital

[www.esht.nhs.uk/our-locations/bexhill-hospital](http://www.esht.nhs.uk/our-locations/bexhill-hospital)

Holliers Hill, Bexhill-on-Sea, TN40 2DZ

**Contact:** 0300 131 4500

#### Eastbourne Hospital

[www.esht.nhs.uk/eastbourne-dgh](http://www.esht.nhs.uk/eastbourne-dgh)

Kings Drive, Eastbourne, BN21 2UD

**Contact:** 0300 131 4500

### PHARMACIES

#### Day Lewis Pharmacy

[www.daylewis.co.uk/pharmacy-page/battle-east-sussex](http://www.daylewis.co.uk/pharmacy-page/battle-east-sussex)

53 High Street, Battle, TN33 0EN

**Contact:** 01424 772010

#### Boots the Chemist

[www.boots.com/stores/6014-battle-high-street-tn33-0ae](http://www.boots.com/stores/6014-battle-high-street-tn33-0ae)

15 High Street, Battle TN33 0EA

**Contact:** 01424 772069

#### Robertsbridge Pharmacy

[www.robertsbridgepharmacy.co.uk](http://www.robertsbridgepharmacy.co.uk)

17 -19 High Street, Robertsbridge TN32 5AE

**Contact:** 01580 880267

#### NHS EYE TESTS

<https://bit.ly/40GsBPO>

#### NHS DENTISTS

<https://bit.ly/47FO3bo>

## HEALTH: Village defibrillator

The defibrillator is on the wall of the Royal Oak by the bus stop.

A defibrillator is an essential life-saving device that gives a high energy shock to the heart of someone who is in cardiac arrest and restores a normal heart rhythm.

Defibrillators used within minutes of collapse can boost survival rates by up to 70 per cent.

As these devices have been the target for thieves, the machine is now in a locked cabinet.

To access it, you must dial the ambulance service on 999 and give the location code (stated on the cabinet). You will be given a code to unlock the cabinet.

Anyone can use a defibrillator. You do not need training.

Once you turn it on, it will give clear step-by-step instructions.

In the meantime, your call leads to an ambulance being called to the scene.

■ Visit [www.bhf.org.uk](http://www.bhf.org.uk) for online training in defibrillator use.



## EMERGENCY SERVICES

### FIRE AND RESCUE

[www.esfrs.org](http://www.esfrs.org)

**Contact:**

Emergency 999  
Non-emergency 0303 999 1000  
Advice/fire safety 0800 177 7069

### POLICE

[www.sussex.police.uk](http://www.sussex.police.uk)

Battle Police Station, North Trade Road  
TN33 0EX

Open Tuesday, Thursday, Saturday 10am-2pm  
Closed public and bank holidays

**Contact:**

Emergency 999  
Non-emergency 101

### AMBULANCE

South East Coast Ambulance Service

[www.secamb.nhs.uk/](http://www.secamb.nhs.uk/)

**Contact:**

Emergency 999  
Non-emergency 111

### CRIMESTOPPERS

[www.crimestoppers-uk.org](http://www.crimestoppers-uk.org)

**Contact:**

0800 555 111  
Hearing or speech impediment 18001 101

### NEIGHBOURHOOD WATCH

[www.sussexnwfed.org.uk](http://www.sussexnwfed.org.uk)

### VICTIM SUPPORT

**Contact:**

Sussex Care Team 0808 168 9274  
Lines open 9am-5pm Monday to Friday  
Out of hours support 24/7 support line 0808 1689 111

### POLICE COMMUNITY SUPPORT OFFICER

Simon Proctor (badge 42920)

**Contact:**

To contact Simon on a general crime issue call 101 and quote his name and number.  
Residents can also check on crime stats for their area at [www.police.uk](http://www.police.uk)



# THE FLORAL BOUTIQUE

FLOWERS FOR ALL OCCASIONS

Unusual and exotic fresh flowers  
and plants

Also stocked:

Ceramic pots ❀ Glass  
Olsten candles ❀ Baskets

Agents for dry cleaning and laundry

Telephone orders welcomed

Wide delivery area

**20 HIGH STREET, ROBERTSBRIDGE**

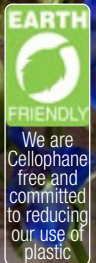
**01580 880977**

**OPEN MONDAY-FRIDAY 9am-5pm**

**SATURDAY 9am-3pm**

Major credit cards accepted

Est 1992



**PUBLIC TRANSPORT: trains and buses**

**RAIL**

[www.southeasternrailway.co.uk](http://www.southeasternrailway.co.uk)

Stations at Battle and Robertsbridge, trains operated by Southeastern Battle Station, Station Approach, Battle, TN33 0DE

Robertsbridge Station, Station Road, Robertsbridge, TN32 5DJ

**Contact:**

Rail enquiries 0345 322 7021  
WhatsApp 07866 002 690  
X @SE\_Railway

Pay for a pre-booked journey when you get on the bus.

The cost of the journey will be displayed on the app or you'll be told when booking over the phone (you cannot pay over the phone).

**Contact:** 01273 078203

[flexibus@eastsussex.gov.uk](mailto:flexibus@eastsussex.gov.uk)

**BUSES**

[www.stagecoachbus.com](http://www.stagecoachbus.com)

No 1066 bus operated by Stagecoach South East.  
Route: Hastings – Hawkhurst – Tunbridge Wells  
Whatlington stop is at The Royal Oak pub

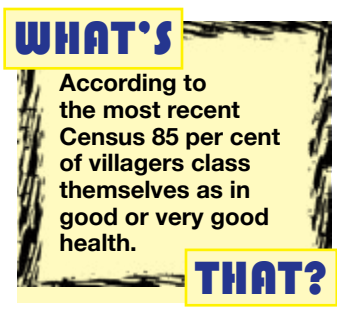
**Contact:** 0345 241 8000

**Battle Area Community Transport (The Bus)**

[www.bact-online.co.uk](http://www.bact-online.co.uk)

**Contact:** 01424 870955

[bactoffice@bact-online.co.uk](mailto:bactoffice@bact-online.co.uk)



**Older Person's Bus Pass**

[www.eastsussex.gov.uk](http://www.eastsussex.gov.uk) and search for Older Person's bus pass

Eligible older or disabled people are entitled to free travel on local buses throughout England.

**Flexibus**

[www.eastsussex.gov.uk](http://www.eastsussex.gov.uk) and search Flexibus

This is a on-demand ride-share mini-bus service that can take you where you need to go, within a 14 mile radius of your pickup point, providing it does not conflict with existing standard bus routes.

Payment is made via the RidePingo app.

**The Education Freedom Pass**

[www.eastsussex.gov.uk](http://www.eastsussex.gov.uk) and search Freedom Pass

The Freedom Pass gives the holder term-time travel on nearly every bus in East Sussex for seven days in a row, including weekends. It is only issued to children eligible for free school transport.

**UTILITIES**

**GAS**

Various UK suppliers such as:  
British Gas 0330 808 3880  
EDF Energy 0333 006 9950,  
Eon 0808 51 520  
National Gas Emergency  
Service for gas leaks: 0800 111 999

**ELECTRICITY**

UK Power Networks (South East)  
[www.ukpowernetworks.co.uk](http://www.ukpowernetworks.co.uk)

**Contact:** 0800 316 3105 or 105 X – @UKPowerNetworks

**WATER**

South East Water supplies drinking water to homes  
[www.southeastwater.co.uk](http://www.southeastwater.co.uk)  
**Contact:** Customer service 0333 000 0001.  
Emergencies 0333 000 0365

Southern Water is responsible for wastewater collection and treatment.

[www.southernwater.co.uk](http://www.southernwater.co.uk)  
**Contact:** 0330 303 0368

**MILK AND PAPERS**

**MILK**

Milk & More  
[www.milkandmore.co.uk](http://www.milkandmore.co.uk)  
**Contact:** 0345 606 3606  
Free delivery, no minimum spend, fresh milk and essentials delivered by 7am.

**NEWSPAPERS**

Pipers  
[www.pipersnews.co.uk](http://www.pipersnews.co.uk)  
Newspapers and magazines delivered in time for breakfast  
**Contact:** 01323 385035.

# We take spiritual things seriously

Whatlington Church has been a place of village worship for around 800 years.

It is part of a combined parish with St John the Baptist church in Sedlescombe.

Rector the Rev John Hawkins holds regular services in both churches.

He says: "At a time when many people are searching for something more in life, we try to take spiritual things seriously.

"That's why we worship and pray together, and why our services reflect the beauty, love and goodness that enrich everyday life.

"You would be very welcome to come along on any Sunday and see for yourself.

"The church is also here at life's important moments – to baptise your children, to support you through illness, death and grief, and to celebrate weddings and other joyful occasions. Please know the door is always open."

Whatlington Church is open every Wednesday and Sunday but it is possible to arrange to visit

at other times by calling Jeffrey Bridges on 07446 903239 or John Crouch 01580 880681. Please give as much notice as possible.

### Services:

First and third Sundays of the month Holy Communion 9.15am

Second Sunday Family Service 10.30am

Fourth Sunday Evening Service 4pm winter, 6pm summer

Fifth Sunday 10.30am Holy Communion at either Whatlington or Sedlescombe

Special services are held during the year including Plough Sunday, the Patronal Weekend and the Christmas Pageant.

### Find out more

<https://sedlescombeandwhatlingtonparish.org.uk/index.html>

**Contact:** Rev John Hawkins 07974 028275  
[whatlingtonparishchurch@gmail.com](mailto:whatlingtonparishchurch@gmail.com)



**Christmas Pageant**



**Plough Sunday service**

## WHAT'S

The 1987 hurricane saw a 1,000-year-old yew tree in the village churchyard come crashing down. Once popular with highwaymen preying on passing carriages, timber from the fallen tree was turned into bowls, keyrings and other objects sold to raise money for the church.

**THAT?**

## Restoration after the fire

The church is believed to date to around 1200 AD and was restored by the Victorians in 1862. It suffered a serious fire in 2010 which resulted in much of the Victorian restoration being lost. The church exterior still reflects the Victorian restoration but the interior has reverted to a more simple style following the post fire restoration of 2010 to 2013.

The new layout creates a more flexible space that has allowed it to host concerts, art exhibitions and local history talks.

**RECYCLING AND REFUSE COLLECTION**

**RECYCLING**

**Rother District Council**

[www.rother.gov.uk/recycling](http://www.rother.gov.uk/recycling)

**Contact:** 01424 787000

**Local facilities:**

Mountfield household waste recycling site (tip)  
A2100 Battle Road. TN33 5LX.

Operated by East Sussex County Council.

[www.eastsussex.gov.uk/rubbish-recycling/household-waste-recycling-sites](http://www.eastsussex.gov.uk/rubbish-recycling/household-waste-recycling-sites). A slot has

to be booked online or by phone to dispose of refuse. Proof of local residency is required.

**Other facilities:**

**Books:** Market Square, Battle; Sedlescombe Car Park; Mountfield recycling site.

**Cans:** Market Square, Battle; Mountfield recycling site; Sedlescombe Car Park.

**Engine oil:** Mountfield recycling site.

**Furniture:** Hastings & Rother Furniture Service

[www.hfs.org.uk](http://www.hfs.org.uk) 6-10 Dorset Place Hastings

TN34 1LG. **Contact:** 01424 441112

Hastings Advice and Representation Centre

[www.harcuk.com](http://www.harcuk.com) Renaissance House,

London Road, St Leonards on Sea TN37 6AN

**Contact:** 01424 428375

[enquiries@harcuk.com](mailto:enquiries@harcuk.com)

**Garden Waste:** Mountfield recycling site

Hardcore: Mountfield recycling site

**Household Waste:** Mountfield recycling site

**Glass:** Market Square Battle; Mountfield

recycling site; Sedlescombe Car Park

**Plastic:** Market Square, Battle; Mountfield

recycling site; Sedlescombe Car Park

**Textiles:** Market Square, Battle; Mountfield

recycling site; Sedlescombe Car Park

**REFUSE COLLECTION**

[rother.gov.uk/recycling](http://rother.gov.uk/recycling)

Collection days and frequencies vary across the

village for black bins (household refuse); green

bins (recycling); brown bins (garden refuse).

There is an annual charge for the brown bins.

■ A weekly food waste collection launched in the spring of 2026.

Collection dates, recycling information and

application for bins from Rother District Council.

**Contact:** [www.rother.gov.uk/rubbish-and-recycling](http://www.rother.gov.uk/rubbish-and-recycling)

**Our luxury  
Rolls-Royce  
can be that  
'something blue'  
for your special day**



Be transported to your special occasion in this rare Rhapsody Blue Rolls-Royce Silver Spirit 2

Rookwood was established in 1975 and has had the privilege of conveying countless brides on their special day . . . even in later years their daughters! Check our website but better still, arrange to view what could be your 'something blue' as part of your great day.



To find out more:  
call Ian on **07730 350544**  
visit [www.rookwood.com](http://www.rookwood.com)  
or scan the QR code



## GET INVOLVED: the joys of walking in Whatlington



# Woodland walks and riverside routes

Whatlington has more than 9km of Public Right of Way footpaths and bridleways, providing ample opportunity to get out and enjoy the Area of Outstanding Natural Beauty in which Whatlington sits.

These are open for everyone to enjoy the woodland, typical High Weald small fields and, although the parish is split by the busy A21, tranquil walks, for example along the River Line away from the hustle and bustle.

There are other benefits too: the High Weald Walking Festival route around the village in 2025 provided walkers with sloes for household sloe gin and mushrooms for breakfast.

Don't know where to start? This online map <https://row.eastsussex.gov.uk/standardmap.aspx> not only details all the local rights of way it shows if any routes are blocked, by a collapsed bridge for instance.

To help keep the network of paths in good order you should report any problems you encounter via the same map link above.

Whatlington also has some Access Land such as Barne's Wood and Footland Wood off the B2089 near the junction with Park Lane, where you can walk anywhere.

However you will probably want to keep to the quite wide open rides in Barne's Wood, while Footland Wood has many narrow paths to choose from, but be warned they are not, in the main, signposted, unlike the Public Rights of Way.

■ Whatlington Footpath Warden Bev Marks is available to help with reporting problems and planning issues related to the Public Rights of Way network. **Contact:** [bevm@hollyblue.net](mailto:bevm@hollyblue.net)

**DON'T RAMBLE ALONE**  
**Battle Ramblers arranges rambles around the area, including Whatlington, with a programme of Sunday walks of varying distances. New members are always welcome and you can find out more [www.battleramblers.org/](http://www.battleramblers.org/)**

## RESPECT, PROTECT AND ENJOY

### RESPECT EVERYONE

- be considerate to those living in, working in and enjoying the countryside
- leave gates and property as you find them
- do not block access to gateways or driveways when parking
- be nice, say hello, share the space
- follow local signs and keep to marked paths unless wider access is available

### PROTECT THE ENVIRONMENT

- take your litter home – leave no trace of your visit



- do not light fires and only have BBQs where signs say you can
- always keep dogs under control and in sight
- dog poo – bag it and bin it in any public waste bin or take it home
- care for nature – do not cause damage or disturbance

### ENJOY THE OUTDOORS

- check your route and local conditions
- plan your adventure – know what to expect and what you can do
- enjoy your visit, have fun, make a memory

**SCHOOLS**

**Primary**

<http://schoolsfinder.direct.gov.uk>  
 Schools at Sedlescombe, Staplecross, Battle, Salehurst, Netherfield

**Contact:** 01580 880360  
[admin@robertsbridge.org.uk](mailto:admin@robertsbridge.org.uk)

**Secondary**

**Claverham Community College**  
[www.claverham.e-sussex.sch.uk](http://www.claverham.e-sussex.sch.uk)  
 North Trade Road, Battle TN33 0HT  
**Contact:** 01424 772155  
[info@claverham.e-sussex.sch.uk](mailto:info@claverham.e-sussex.sch.uk)

**Bexhill 6th Form College**  
[www.bexhillcollege.ac.uk](http://www.bexhillcollege.ac.uk)  
 Pentland Road, Bexhill TN40 2JG  
**Contact:** 01424 214545  
[enquiries@bexhillcollege.ac.uk](mailto:enquiries@bexhillcollege.ac.uk)

**Robertsbridge Community College**  
[www.robertsbridge.org.uk](http://www.robertsbridge.org.uk)  
 Knelle Road, Robertsbridge TN32 5EA

**Sussex Coast College Hastings**  
[www.escg.ac.uk](http://www.escg.ac.uk)  
 Station Approach, Hastings, TN34 1BA  
**Contact:** 030 300 39400  
[hastings.info@escg.ac.uk](mailto:hastings.info@escg.ac.uk)

Looking for a particular local charity? Or want to get involved as a volunteer? Rother Voluntary Action exists to support charities and volunteers.  
**Contact:** 01424 217 259  
[hello@rva.uk.com](mailto:hello@rva.uk.com)  
[www.rva.uk.com](http://www.rva.uk.com)



**LIBRARY**

7 Market Square (opposite fire station), Battle, TN33 0XB  
 Closed Monday and Sunday, other hours vary, see [www.eastsussex.gov.uk/libraries/local/locations/battle](http://www.eastsussex.gov.uk/libraries/local/locations/battle)  
**Contact:**  
 0345 60 80 196  
[library.battle@eastsussex.gov.uk](mailto:library.battle@eastsussex.gov.uk)

**VETS**

**Senlac Veterinary Centre**  
[www.senlacvets.co.uk](http://www.senlacvets.co.uk)  
 32a Mount Street, Battle, East Sussex, TN33 0EG  
**Contact:** 01424 772148  
 Robertsbridge Centre  
 George Street, Robertsbridge  
**Contact:**  
 01580 880280L  
**Contact:** 01424 232450

**Find a local vet**  
 Search by destination  
<https://bit.ly/4cRlaLM>

**WHATLINGTON NEWS**



**Whatlington News** FEBRUARY 2026  
**WHATLINGTON CONNECTED**  
 Village events & more  
[www.whatlington.com](http://www.whatlington.com)

**GOT A STORY?** Steve Turner ▶ 07941 669678 ▶ [steveturner807@gmail.com](mailto:steveturner807@gmail.com)

**BINGO**  
 Fun for all the family  
 20 February 7pm Village Hall

**See pages 13-14 for full details**

**ANTIQUES MARKET**  
 22 March 10am-1pm  
 Village Hall

**Step up or pay up**  
 Lack of road safety volunteers could prove expensive for villagers

**We woke up to find our boundary trees gone** See page 5

**Pub sale remains a mystery**  
 Uncertainty surrounds the sale of the Royal Oak, with strong local rumours that a buyer has been found not confirmed by owners Sheehard Neame. It is thought the pub, closed for nearly a year, may have been bought by a restaurateur who lives locally. But a spokesperson for the brewers would only say "discussions with an interested party are ongoing". The property is still listed as Under Offer on selling agent Christies website.

**Keep up to date with village news and views with the bi-monthly newsletter delivered to every home and available online and as a pdf attachment.**  
**Contact:** Editor Steve Turner  
 07941 669678 [steveturner807@gmail.com](mailto:steveturner807@gmail.com)

**GET INVOLVED: a glimpse into the past of your village**



*The A21 when it was still possible to walk along the road*



*View towards the Village Hall showing the former mill on the left, which was demolished in the 1930s*



*Haymaking at Vinehall Farm in 1905.*



*The village forge in 1910*

# 1066 – the Battle of Whatlington?

■ Watlingtone is named in the Domesday Book (1086) when it was bigger than Sedlescombe and before Battle existed. Its Saxon name meant Wattis' people. The manor was acquired by King Harold and was recorded as being 'wasted' immediately after the 1066 battle but was restored by 1087 to its former value of 50 shillings.

■ Local legend has it that Harold and his men held a service in the village, on the site of the current church, on the eve of the battle.

■ In view of the fact the town of Battle didn't exist in 1066 and our village was the nearest habitation some local historians believe the historic event should be called the Battle of Whatlington!

■ Whatlington village was originally the area by the Church, Village Hall and River Line. The upper part by the Royal Oak was known as Woodman's Oak. Both parts eventually united into one village and known as Whatlington.



*Whatlington Garage in the 1930s*



*The Royal Oak in 1953*

# Clarkson Construction

Extensions General Building

Property Maintenance

Kitchens & Bathrooms

Plumbing

FREE ESTIMATES

Call: Ben on **07771 535680**

Email: **[ben.clarkson1@gmail.com](mailto:ben.clarkson1@gmail.com)**

Morrells, Park Lane, Whatlington TN33 0NY



Marlborough House  
Vinehall  
A REPTON SCHOOL

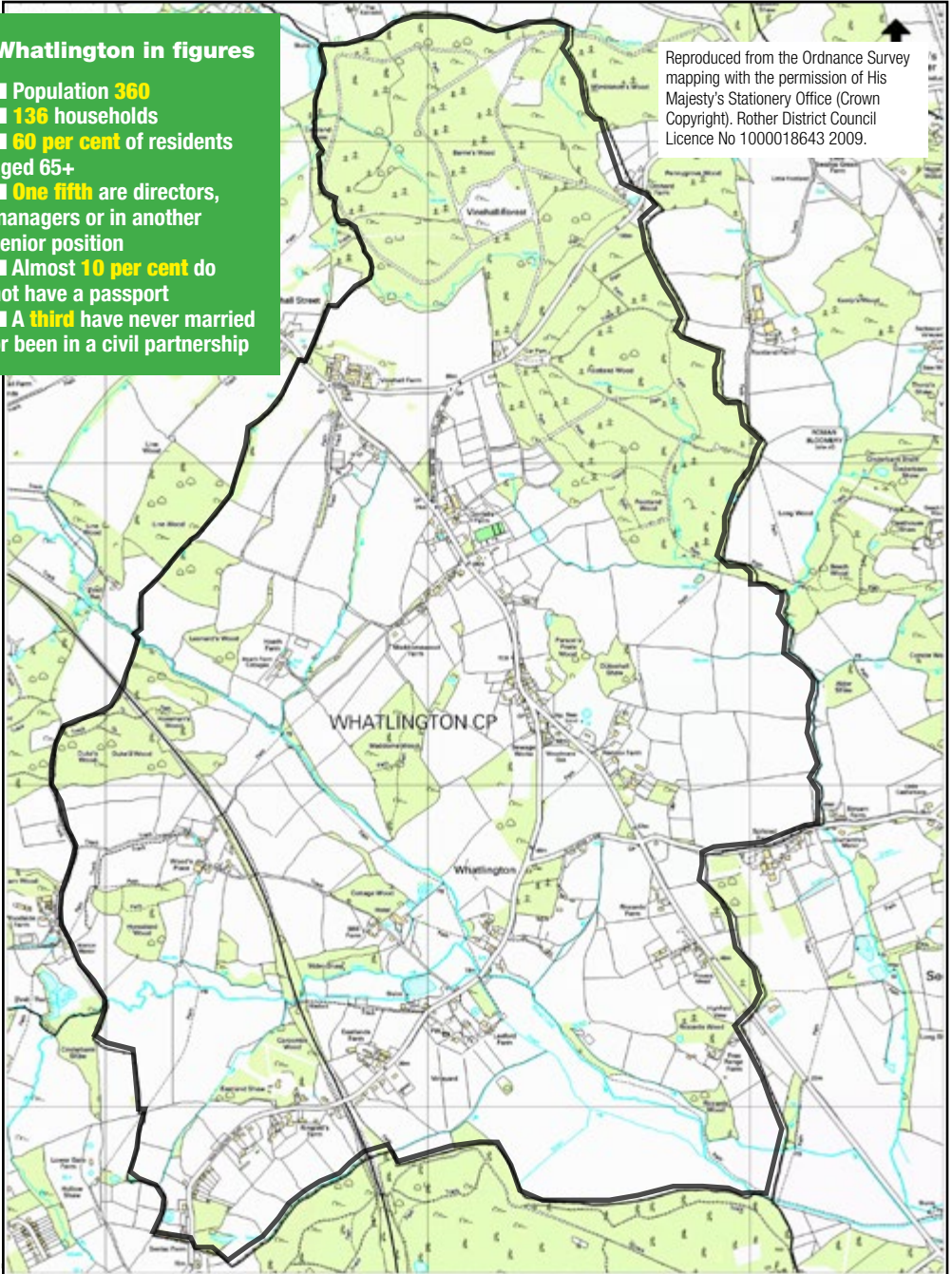
all heroes  
of their own story

2 - 13 YEARS | DAY & BOARDING | 50-WEEK WRAPAROUND CARE FOR NURSERY-YEAR 8  
mhvschool.co.uk | admissions@mhvschool.co.uk | 01580 880413  
Marlborough House Vinehall, Robertsbridge, East Sussex, TN32 5JL

## Whatlington in figures

- Population **360**
- **136** households
- **60 per cent** of residents aged 65+
- **One fifth** are directors, managers or in another senior position
- Almost **10 per cent** do not have a passport
- A **third** have never married or been in a civil partnership

Reproduced from the Ordnance Survey mapping with the permission of His Majesty's Stationery Office (Crown Copyright). Rother District Council Licence No 1000018643 2009.



neptune  
media

Printed by Neptune Media  
[neptonemedia.co.uk](http://neptonemedia.co.uk)  
01424 400900