

GREAT MILTON BULLETIN

May 2022

Published by the Parish Council

No. 575



Freedom of Information Act – Parish Council Publication Scheme

The Freedom of Information Act 2000 provides rights of public access to information held by Public Authorities. The Parish Council adopted a new publication scheme in November 2019: details can be found on the Parish Council Website at <https://www.great-milton.co.uk/freedom-of-information/>. Residents can see records of the policies and practices of the Parish Council including minutes, financial information and responses to planning consultations, on request from the Parish Clerk or via the website.

Great Milton Parish Council

Chairman:	Stephen Harrod	01844 278068
Ward:	Church Road to Monckery Farm/The Priory	
Vice Chairman:	Bill Fox	01844 279716
Ward:	Thame Road, inc Fullers Field and Green Hitchings	
Councillor:	David Harms	
Ward:	The Green from Priory Bank to Tara/Applewood	
Councillor:	Clyde Deacon	01844 279242
Ward:	High Street from North End Cottage to The Old Garage	
Councillor:	George Bennett	07482 339905
Ward:	Thame Road from Green Hitchings to A329	
Councillor:	Malcolm Horsley	07970 924194
Ward:	Kings Head House/Red Roofs to Wheatley Boundary	
Councillor:	Peter Allen	01844 278334
Ward:	Milton Common	

Clerk/Responsible Financial Officer: Tim Darch – 01844 278347
contact@clerkgreatmilton.co.uk

Parish Council Representatives

Rec Ground Committee:	James Cunningham, Michele Block
Old Field Charity:	Adrian Buckmaster, David Mackrory
Hard Surface Play Area:	Susan Read, Jon Devitt
Neighbourhood Watch:	Jola Miziniak
Kent & Couling Charity:	Tricia Treanor, Simon Cronk
Sheppard Trust:	Ann Price, Pat Cox

Cover: Fuchsias.

Photo: Ian Melton.

Key Contacts:

Local Governance

Oxfordshire County Council	01865 792422	Oxfordshire.gov.uk
South Oxfordshire District Council	01235 422422	Southoxon.gov.uk
County Councillor: Freddie Van Mierlo	07944 492438	freddie.vanmierlo@oxfordshire.gov.uk
District Councillor: Caroline Newton	07951 477144	caroline.newton@southoxon.gov.uk
Great Milton Parish Council		
Stephen Harrod (Chair)	01844 278068	
Tim Darch (Clerk)	01844 278347	contact@clerkgreatmilton.co.uk
Report potholes, fly-tipping, vandalism, broken paving		Fixmystreet.com
OCC Family Information Service	08452 262636	fis.enquiries@oxfordshire.gov.uk
OCC Highways	0845 310 1111	highway.enquiries@oxfordshire.gov.uk
Missed Bin Collection	03000 610610	admin.southoxford@biffa.co.uk
Bulky Household Waste Collection	01235 422406	waste.team@southandvale.gov.uk
SODC Housing	01235 422422	housing@southandvale.gov.uk
SODC Planning Applications	01235 422600	planning@southoxon.gov.uk

Services

Emergency - Police, Fire, Ambulance	999	
Police non-emergency	101	thamesvalley.police.uk
GP Surgery, Morland House	01865 872448	morland-house.co.uk
NHS non-emergency	111	nhs.uk
Gas Emergency	0800 111 999	nationalgrid.com/uk/safety/
Electricity Outage	0800 072 7282	sse.co.uk
Burst pipe or leak	0800 714 614	thameswater.co.uk
Floodline	0345 988 1188	gov.uk/check-flood-risk

Local information

St. Mary's Church: Rev. Simon Cronk		simon.cronk@btinternet.com
Methodist Church: Rev. Stephen Spain	01865 763676	
Neighbourhood Watch: Jola Miziniak	07917 676463	jolamiziniak7@gmail.com
Neighbourhood Watch: Rod Snowdon	07836 728919	bigsnodi@hotmail.co.uk
Citizens Advice Oxfordshire	03444 111 444	caox.org.uk
The Maple Tree Children's Centre	01865 873916	mapletreec@oxfordshire.gov.uk
Great Milton Neighbours Hall	01844 278415	
Great Milton Pavilion & Recreation Ground	01844 278116	
Great Milton Website		contact@clerkgreatmilton.co.uk http://www.greatmilton.co.uk
Great Milton Bulletin	01844 278347	contact@clerkgreatmilton.co.uk gmbulletin@hotmail.co.uk
Great Milton Primary School	01844 279388	gmilton.org
Wheatley Park School	01865 872441	www.wheatleypark.org

Transport

Comet - for people without access to suitable public transport	01865 323201	oxfordshire.gov.uk/comet
Arriva (280) Bus	0344 800 4411	arrivabus.co.uk
Oxford Tube (Buses to London)	01865 772250	oxfordtube.com
Park & Ride		oxfordshire.gov.uk/cms/public-site/parkandride
National Rail Enquiries	03457 484950	nationalrail.co.uk

Draft Parish Notes – April 2022

Annual Parish Meeting

Held at the Pavilion on Tuesday 19th April 2022 at 7.30pm

The meeting was attended by Cllrs S Harrod (Chair), W Fox (Vice-Chair), G Bennet, C Deacon, D Harms and M Horsley. Apologies were received in advance from Cllr P Allen and Cllr Caroline Newton (SODC). Tim Darch (Clerk) was in attendance, along with Cllr Freddie Van Mierlo (OCC) and one member of the public. No interests were declared. No resolutions were discussed at this meeting.

The minutes of the previous Annual Parish Meeting held virtually via video conference on Monday 26th April 2021 at 7.30pm were received, reviewed, signed and approved as a complete and accurate record of proceedings.

The Chairman of the Parish Council's Annual Report was received and reviewed. No questions or comments were received.

The District Councillor did not submit an annual report and was not present.

The County Councillor's observations on the previous year were received and reviewed. No questions or comments were received. In addition to his written submission, Cllr Van Mierlo announced that Great Milton will be included in the first tranche of 20mph zones.

The Parish Council's accounts for the year ended 31st March 2022 were received and reviewed. The accounts show that our receipts exceeded payments by £1,129. However this result includes two large one-off items: we installed speed mitigation measures in Milton Common at a cost of £17,375 for which we received a grant from CIL funds of £15,289. Excluding these items, our surplus for the year is £3,215. The Council sets a budget to break even each year and this year a number of items contributed to the surplus. The two principal items were the sales of advertising in The Bulletin (£1,500 over budget) and grass cutting costs (£1,296 under budget). Our reserves at the end of the year stood at £34,696 which is within the guidelines of twice annual expenditure and gives us a very healthy cushion against unexpected events.

The Parish Council's observations on its finances were received and reviewed. Cllr Allen and Tim Darch in his capacity as Responsible Finance Officer were congratulated on their role in the Parish Council's settled and positive financial position.

Annual Reports and Financial Statements were received from:

- Great Milton Recreation Ground Management Committee. Councillors observed that the report contained no mention of the potential for school-related parking, which the Parish Council had been advised would be considered by the Recreation Ground committee.

- Old Field Charity
- Kent and Couling Charity
- Sheppard Charitable Trust
- Neighbours Hall Committee
- The Hard Surface Play Area Committee
- Great Milton Neighbourhood Watch

No comments were received on any of the above unless stated.

The meeting finished at 7.45pm. A combined reports pack is available on the Great Milton Parish Council website at 'Parish Council/Meetings/Meetings 2022/Meeting agendas and accompanying documents'.

April meeting of Great Milton Parish Council

Attendees and apologies were as per the Annual Parish Meeting.

Matters to Report

Monthly reports were received from Cllr Freddie van Mierlo (County Councillor, Chalgrove division) and Cllr Caroline Newton (District Councillor, Haseley Brook ward). Both are available on the Parish Council website.

Correspondence and public discussion

No correspondence has been received this month other than that relating to matters dealt with elsewhere on the agenda.

Planning Applications

The following planning applications received from SODC were considered.

P22/S1189/HH (7 Thame Road, Great Milton). Replacement of existing single storey rear extension with single storey rear extension.

This application was reviewed by Cllr Bennet. Following local consultation, no issues were raised by neighbours, other than a remark on the location of an access gate. After brief discussion councillors agreed to SUPPORT the application.

The following planning decisions received and outstanding planning matters were reviewed.

P21/S4878/HH, for development work at the following location: The Old Stable Yard Thame Road Great Milton. Stable buildings and concrete apron to front comprising three stables, tack room and store. Application APPROVED.

LE MANOIR AUX QUAT' SAISONS: RE-SUBMISSION OF PLANNING APPLICATION

P21/S0343/FUL & Listed Building Consent Ref. P21/S0428/LB

A revised application for development work at Le Manoir has been submitted

to SODC. Full details of timescales and consultation arrangements were yet to be agreed by SODC at the time of the meeting, but details of the application have been circulated to residents. Further information will be circulated via the usual channels when available.

The minutes of the March meeting of the Parish Council, held on Monday 21st March 2022, were received, reviewed and approved as a true and accurate record of proceedings.

Financial Resolutions

The following cheques for payment were authorised and signed:

Tim Darch. Salary, Tax and Expenses. £557.72

Jonathan Dudley. Bulletin production April. £359

Shield Solutions. Dog bin emptying March. £62.40

Maple Tree annual grant. £500

Three Villages car scheme insurance. £115 (cheque not written: payment deferred)

SODC, Return of councillor Covid funding. £500.

Website support February. £19.99 (paid by monthly Direct Debit)

BT Office/e-mail package. £10.80 (paid by monthly Direct Debit)

The final bank reconciliation, accounts and bank statement for the financial year 2021-22 were reviewed and approved. The reconciled bank balance as at 31 March 2022 was £34,695.83.

To note that given income of more than £25,000 in the financial year 2021-22, the Parish Council will be required to submit accounts for a limited assurance review.

The proposed dates for Great Milton Parish Council's internal/external audit activities were reviewed and approved as follows:

- Internal Audit (commenced April 2022)
- Parish Council to receive Internal Audit report (May 2022: TO BE CONFIRMED)
- AGAR return to be approved and signed (May 2022: TO BE CONFIRMED)
- AGAR return and associated information submitted to External Auditor by June 30th 2022
- Exercise of public rights – 30 working days in June and July: DATES TO BE CONFIRMED
- Accounts to be approved and published/required info displayed on website by June 30th 2022
- Receipt of External Auditor's response and Notice of Completion: August 2022

The submission of the Parish Council's VAT reclaim for the year 2021-22, for the sum of £4313.00, was noted.

The Parish Council's Fixed Asset Register has been updated to include litter-picking equipment purchased in May 2021.

Parish clerk and councillors' update of matters in hand

- The vehicle-activated signs have now been installed and are in use in Milton Common.
- The recent tree inspection revealed no significant issues, but several trees require routine maintenance. This will be arranged to take place as soon as possible.

COVID-19: update on village response/impacts

There are no significant issues to report other than those which are receiving national coverage.

20mph zone

Great Milton will be included in the first round of 20mph zones, though exact dates are yet to be confirmed.

Security in the village

A reminder that members of the Community Policing Team will be in attendance at the Pavilion on Saturday 23 April and Saturday 16 July (1000-1400) to meet residents, provide advice and respond to concerns. There will also be a Neighbourhood Watch gazebo at the Church Fete on Saturday 11th June. Initial discussions have taken place with Smartwater, a property marking system, regarding the potential for this to be adopted in the village.

Queen's Platinum Jubilee celebrations

An update was received on the evolving plans for celebrations to mark the Queen's Platinum Jubilee on the long weekend from Thursday 2nd to Sunday 5th June. A 'community picnic' is being planned on Sunday 5th June on the Recreation Ground, while The Bull will be open throughout the weekend, with live music planned on Saturday 4th, among other events. Further details will appear in the May Bulletin.

The next meeting will be the Annual Meeting of Great Milton Parish Council, to be held on Monday 16th May 2022 at 7.30pm at the Pavilion.

Christian Aid 2012

Thankyou to each host who opened up their home for Lent lunches and wonderful conversations in March this year. As well as enjoying ourselves we raised @£500 towards our Christian Aid total for this year.

There will, once again, be collections in each of the three villages thanks to the amazing work of distributors and collectors in each of our villages. Thankyou to each one of you who intends and/or will give to Christian Aid this year.

S.A Dennis

Benefice Services May

	St. Mary the Virgin Great Milton	St. James's Little Milton	St. Peter's Great Haseley
Sunday 1st		Holy Communion 9:00am	Family Worship 10:30am
Sunday 8th	Holy Communion 9:00am	Family Worship 10:30am	
Sunday 15th	Family Worship 10:30am		Holy Communion 9:00am
Wednesday 18th	BCP Holy Communion 12:00noon		
Sunday 22nd			Benefice Holy Communion 10:30am Family Gathering 4:00pm
Wednesday 29th		Benefice Holy Communion 10:30am	BCP Holy Communion 12:00pm

The Rector's Pint

It is very tempting to withdraw into a bucolic bubble. Against the backdrop of another glorious English spring, it is hard to conceive of the destruction, suffering, and pain, being meted out on cities and towns in Ukraine right now. Not only in Ukraine of course, how many of us have followed the terrible things that are ongoing in Yemen? And somehow the fallout from the withdrawal from Afghanistan seems to have slipped down the newsworthy ladder.

Nonetheless, it is Ukraine that dominates now and after only a few weeks of conflict we are hearing about shocking acts of brutality and depravity, such is the terrible nature of war.

So, it is tempting to turn away, and focus on the loveliness of an English village in spring. But I and others are, of course, wanting to do something practical. However, what might our Christian faith have to say in the face of yet another example of the human tendency to mess things up so badly?

My faith has, at its heart, an act of violence so shocking that as a form of execution

it was eventually banned by the very people who invented it. There is no comfortable escapism to be found in crucifixion. What do I see going on? I see an event in which the full horror of human failing, of evil and violence, falls upon a wholly innocent victim. But I am, or I try to be, a Christian, and that means that I declare that the pain, and loss, and broken hope, that the Cross represents was not, and is not, the last word. We are in the Easter season, the season of Resurrection and I believe we need to declare loudly and boldly, in the face of all the terrible things that we as human beings are capable of, that God sees in us creatures who can be redeemed, and who are loved, and that brings us hope.

I find it very significant that Jesus himself is reported as declaring that we should not be at all surprised that the world is the way it is. He promised that we would continue to hear of wars and rumours of wars. Nonetheless, against that bleak assessment of our world, Jesus still called those who would listen to follow him, and continue to work and pray for a better way. I believe that we do that in the light of both his death which declares that he knew and experienced the very worst, and the Resurrection, which declares that hope will not die - and ultimately, we will experience the very best.

Simon

God of Love, God of Peace, this fractured word
Cries out in pain, burns deep into my soul,
And challenges me, to make a difference.
God of Love, God of Peace, God of this world,
Scarred by grief and tears, ignorance and fear,
Softens hearts of stone, and begins with mine.

God of Love, God of Peace, create within me
A heart for people, a desire for change,
For new beginnings to start this day.
© John Birch

Great Milton Bellringers

We will be ringing for Her Majesty on Friday June 3rd, at the same time as the Thanksgiving Service at St Paul's, (the exact time has still to be confirmed).

GMB

Great Milton Methodist Church Services

For further info. please contact Rev Stephen Spain on 01865 763676

May 2022				
Date	Time	Church	Preacher	Comments
1st	11:00am	Gt. Milton	Revd Stephen Spain	Holy Communion
8th	11:00am	Gt. Milton	David Harper	
13th	11:00am	Gt. Milton	Local Arrangement	
22nd	11:00am	Gt. Milton	Gillian Dodds	
29th	11:00am	Gt. Milton	David Harper	

Great Milton Church Fete 2022

June 11th, 2pm-4pm.

The Recreation Ground and Green between Rec and Plant stall at the Old Barn.

Dear villagers

We hope you are looking forward to our Church Fete. Here are some tips to prepare and get the most out of the day.

Bring lots of cash. Also bring a card if you wish to buy plants or garden tools as this stall will have a card reader.

Programmes with a map of stalls and activities will be available for 50p. The layout is a bit different this year with most stalls on the Recreation Ground but some along the Green leading to the magnificent plant sale at the Old Barn opposite the school.

Competitions

Dog Show - show off your dog on the day and maybe win a prize. Categories are -

Most Fabulous fella

Most Loveliest lady

Best trick

Dog with waggiest tail.

Cake Competition with the theme Platinum Jubilee. Raymond Blanc will be judging the children and adult sections so get baking and impress him.

Raffle - We have great prizes with the top prize of a meal for two at Le Manoir aux Quat Saisons.

There will be stalls, the History Society displays, local entertainers, games, Philsters beer, the Pub and teas served in the Pavilion. If you wish to join the list of performers,

it is not too late - just let us know.

The following would really appreciate your donations

Stalls

Books - Sue Barratt and Pippa Read (paperbacks and children's books but not hardbacks, to be delivered on the day only)

Bric a brac -Alan Pickett (on the morning of the day on the Green by the Old Garage)

Gifts and toiletries - Sarah MacMahon, The Limes

Accessories (jewellery, bags, scarves etc) - Yvonne Cartright and Dee Pickett

Jams and produce - Evelyn Joslin

Cakes -Clare Maclean, The Old Stores

Cakes and biscuits for teas - Margaret Rogers, Creeper Cottage

Hoopla - Bottles/Jars/Tins - Michele Block

Plants - Liz Moyses and Helga Dowie

Jam Jar Tombola - Celina Bernstrom

Any donations can be dropped off to Clare B-P or Alex Kirkman and we will deliver to the right stall.

Please help us set up in the morning or take down at the end of the day. Any help is greatly appreciated. There will be local live music to end the day too.

Let us hope the sun comes out and we look forward to seeing you.

Alex Kirkman, Celina Bernstrom, Rachel Hutton and Clare B-P

Great Milton History



At last we will be back at the Fete – our tent is to be on the Rec. as normal and we will have all the usual goodies! Albums, photos, maps, a selection of small booklets and anythingelse that we think might interest you!

There is an enlarged photo of the Home Guard – we think it is the 4 villages together – but it needs identifying so an opportunity to mark it up for future reference.

It is hoped that Ian Melton's book 'Great Milton Wells' will be the main attraction, but at present we are not certain if copies will be ready in time – all working hard to make the date.

Come and see us in our tent – you will be very welcome!

GMH

Great Milton Neighbours Club

In June we will be celebrating our 61st Anniversary. The Club was started in 1961 and at that time we had about 60 members drawn from Great Milton and the surrounding villages. Now we have about 18 active members who are all very keen to keep the Club going. We are supported financially by the Sheppard Trust.

We have fortnightly meetings on Thursday afternoons with a varied programme including: speakers, quizzes, games etc. 'Go Active Gold', financed by Oxfordshire County Council (to keep us active), have given us a Curling set, Boccia Balls (Bowls) and Parachute games, occasional keep fit sessions with Yvonne Cartwright, Bring and Share and Fish and Chip lunches, For those interested there is a short session of Bingo ending the afternoon. We finish the year with a Christmas lunch. We also have coach and minibus outings (see below).

The club welcomes anyone over the age of 55 and widows and widowers of any age. Meetings start at 2:15pm on alternate Thursday afternoons in The Neighbours Hall, Great Milton. Doors open 1:45pm.

Visitors £2.00 including tea.

For any further information on what's happening, please don't hesitate to contact our Chairman, Tony D'Angier on 01844 279616, Janet Earl 01844 279432, Ann Price 01844 279474 or Celia Cope 01844 279459.

Future Club Outings

Thursday 19th May

The Wildlife Hospital at Haddenham (Tiggywinkles) is the busiest and most advanced in the world, started 40 years ago for the rescue and rehabilitation of British wildlife.

Lunch and shopping, Haddenham Garden Centre, rest Home for Horses at Speen in the afternoon. Cost £22.

Wednesday 13th July

Steam Train. Cheltenham to Broadway.

In Broadway there are a number of small shops and two recommended Museums, one the Gordon Russell Design Museum 'celebrates the life and work of the renowned furniture designer Sir Gordon Russell in the Arts and Crafts tradition.' The other recommended museum and art gallery of local history is 'just mind boggling; an unexpected gem'. Approx £25.00 (subsidised).

Wednesday 7th September

Salters Steamers River Trip. Marlow to Henley. Time for lunch in Marlow and tea in Henley. Approx £25.00 (subsidised).

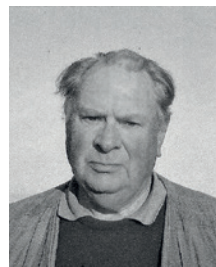
'Not the January Party...'

The Great Milton Dads/DJ Niv party night at the Neighbours Hall in Great Milton on Saturday April 23rd raised a stunning £1,200 for the Ukraine relief effort through ticket sales. Thanks to all who attended from the Miltons and Haseleys, and to all who were involved in the event in any way. See you at the next one!

GMD, DJ Niv and Paul P x

View from Views

My opening paragraph last month made no mention of other unbelievable happenings in this area, that is the changing hands at the “Lamb” and “Coach & Horses”. I would like to add my best wishes to both Des & Ian, and David & Debbie in their well-earned retirement. Both of these establishments always supported their respective villages. I am sure we all appreciated what they have done, which embodied what a village pub should be, and however good their replacements may be, it will be different. David & Debbie and Des & Ian will whatever be sorely missed, at least until we get used to a new regime. In all honesty we have been very lucky to have 2 independents in our area.



The glorious and warm weather in the middle of March could not last and the subsequent rather cooler weather has held most of our crops back and, since I last wrote, have not moved or grown a great deal. Our Oil Seed Rape is still suffering from pigeon attack and looking very sorry for itself. In places it is a good crop but where these pests have decimated it I cannot see it being worth a great deal. It is a bit galling to look across the valley (in full view of our house) at a crop that looks picture perfect. Our Clover companion crop seems to have just about survived our attempts to kill it in order to control other weed problems; fingers crossed for its survival. The Lupin seed has been delivered which, soil conditions willing, will be planted towards the end of April early May; hopefully by the time you read this they will be flourishing. The one big problem we are now told is pigeons and, bearing in mind that they are in a field adjacent to the Rape, I think we will have to mount a 24 hour guard.

The wildlife around seems to be getting on with procreation at the moment, but it does concern me how little notice some of the public take of this fact and allow their dogs to run riot all over the place. Being involved with animals all my life I understand how having this sort of freedom appeals, but wildlife also need its freedom and



don't forget that dogs are a natural predator so, even if they are as gentle as we think, other animals only see them as a danger.

We are all concerned about what it is going to cost us to live; it is a real problem and we of all people understand what pressure some households are under. The problem is we all have to make a living and, in spite of all our protestations, it is the large retailers who, at the end of the day, control the price. The processors/middle men go along with that. However, in an interesting change of heart, I note that they are now saying to the retailers this has to stop and we need to pay the producers a realistic price otherwise the milk will not be there. Already we are seeing glass house producers not planting so much due to the cost of fuel. Maybe we will get a little more realism in the food market. We may well have to pay more than we would like, and be short of product but we may well understand the true value of food and how it is produced. We must remember that we are spending a lower percentage of our income on food than ever before. Whilst on this subject, why is it that we expect those in agriculture, producing the most important product of our life, to have a lower than average pay packet.

The Government has just announced its energy policy for 2030. That must be a good sign, although I am not happy about so much nuclear; on the other hand it has to come from somewhere. On nuclear it does say a mix of large and small modular plants which, in the light of what's happening in Ukraine, the thought of an irresponsible foreign power getting hold of them does not bear thinking about. On the solar front, we are told we need to produce 50gw from Solar. If 1 acre produces 1/4mw this means, if it takes 1000 mw to produce 1 mgw, we will need 200,000 acres which would, conservatively, equate to 800,000 tonnes of Wheat. Some is already in production but we have to understand the magnitude of the problem especially as most will be on good arable land, as this is the most cost effective way of achieving this aim. In my mind every south facing roof should have panels as long as it is aesthetically acceptable.

Our wonderful lacking in common sense County Council made the national press recently with their insistence to use plant based food as it was better for the planet, with pictures of food from all over the world (Kiwi Pomegranate Melons). These are supposed to be intelligent human beings that have made this decision; do they not read the reports that state animal production in this country is not the problem levelled at it, and that a balanced diet is in fact healthier, then take a balanced view. This sort of action by those that are supposed to set an example does not help the local agricultural industry who are trying many initiatives to help solve the problem, and if we do not have any support, what incentive is there for us to go that extra mile in helping the planet? It is rather like kicking us in the teeth.

Finally just a reminder it is only just a few days before Tom and I do the Tractor run

raising much needed money for the Air Ambulance. Please donate generously. I have put a sponsorship form in the Great Milton Post Office if anyone prefers that payment method, otherwise there is; <https://justgiving.com/fundraising/charles-peers5>

Charles Peers

Morland House Surgery – 18th April 2022

COVID-19 Spring Booster Vaccine - Update

People aged 75 years and older, residents of care homes for older people, and those with weakened immune systems can obtain a Spring booster of coronavirus (COVID-19) vaccine. You are eligible for a Spring booster if it has been six months since your last booster vaccination. Until then, anyone aged 12 and over should ensure that they have the full course of vaccines available to them. For more information, please visit <https://www.nhs.uk/conditions/coronavirus-covid-19/coronavirus-vaccination/book-coronavirus-vaccination/>

COVID Testing

From April 1st the government withdrew free lateral flow test kits. Tests are only available for those who have a health condition, if you're going to hospital for surgery or a procedure, or if you work in the NHS or social care. For the Government's guidance on COVID see <https://www.nhs.uk/conditions/coronavirus-covid-19/testing/get-tested-for-coronavirus/>

NHS App

If you own a smartphone, we strongly recommend you download the NHS App. To use it you should be aged 16 or over and registered with a GP Surgery in England. To find out more please visit <https://www.nhs.uk/nhs-app/> Use the NHS App to:

- Get your NHS COVID Pass
- Get advice about coronavirus
- Order repeat prescriptions
- Book appointments
- Get health advice
- View your health record
- Register your organ donation decision
- Find out how the NHS uses your data
- View your NHS number

After you download the app, you will need to set up an NHS login and prove who you are. The app then securely connects to information from your GP surgery.

Collecting Repeat Prescriptions from Wheatley Pharmacy and Car Parking

Several of our patients are now collecting their repeat medication from Wheatley Pharmacy. You too can do the same. Order your repeat medication as you would normally and just let one of the dispensing team know that you wish to collect from the Pharmacy. Turnaround time for medication dispensing at the Pharmacy is currently three days from submission of your repeat medication request. You do not need to wait for a text message to confirm your medication is ready before going to collect.

Please note that our car park is quietest from 11am and 1pm, and you may wish to consider this when visiting the surgery to collect medication. Please park in marked bays rather than straddling bays.

Visit Morland House Website

For up-to-date information about services, the COVID-19 vaccine, and opening hours, please visit

www.morland-house.co.uk

Haseley Open Gardens

On Saturday July 9th we are organizing an Open Garden event in the Haseleys.

We hope that as many Haseley residents as possible will open their gardens to create a fun, social afternoon, where we can all satisfy our curiosity about our friends' gardens, and see some beautiful plants (and maybe the occasional wonderful weed). We will also be serving teas and delicious cakes in the Great Haseley Village Hall.

Entrance to the participating gardens will be by donation, with all money received for entrance to the gardens and teas going to St Peter's Church, Great Haseley. Residents and friends of Great Milton and Little Milton would be warmly welcomed to join us.

We really hope to see you there,

Judy Alexander, Jane Cannon, Scilla Greenall, Fiona Heyward, Mary Isaac and Marylu Sheehan

Wheatley Library

It is free to join and use the library!

Opening hours:

Monday: closed

Tuesday: 2-7pm

Wednesday 9.39-1pm and 2-5pm

Thursday 2-5pm

Friday 9.30-1pm and 2-6pm

Saturday 9.30-1pm

You can manage your library account, pay charges, request books and renew books the following ways:

- In person with your library card
- Online <https://libcat.oxfordshire.gov.uk/web/arena/my-account>
- Oxfordshire Libraries App available from any app supplier

You can also reach us via telephone 01865 875267 or email wheatley.library@oxfordshire.gov.uk.

“A library outranks any other one thing a community can do to benefit its people. It is a never failing spring in the desert.” – Andrew Carnegie

Wendy Stanton (Wheatley library manager)

The library is located on the upper level of the Merry Bells Village Hall in Wheatley High Street.

Tons Together (Little Milton) WI

In April, we had fun making many Easter crafts from embroidered eggs to rabbit gift boxes, complete with chocolate eggs.

At our next meeting on Thursday 12th May at 7.30pm Nollag McGrath, the Practice Manager of Morland House Surgery will be talking to us about her work at the practice. Everyone welcome. Visitors £5 or join up (2022/23 membership £44).

Other news:

Inter village Tug of War - Saturday 28 May on Great Milton Rec.

We'll be running the tea & cake stall in the Pavillion – any helpers and/or cakes welcome. Also a good opportunity to promote our new WI.

We won a £150 Platinum Jubilee bursary to be spent on educational courses or events - everyone needs to get thinking what we'd like to spend it on! All ideas welcome.

Do you live in Little Milton, Great Milton, The Haseleys, Stadhampton or surrounding villages, new to the area, want to meet new people, make new friends? Then join Tons Together WI and meet like-minded, local women of all ages in an informal, friendly group. Please email us if you fancy joining WI or need a lift.

We meet every 2nd Thursday of the month at 730pm in The Pine Lodge, Little Milton OX44 7PZ



Too shy to come by yourself? Contact us & we'll find you a WI buddy.

Like us at www.facebook.com/Impinelodge

Details & news on the Pine Lodge page at www.littlemilton.org.uk

Kath Stacey 01844-279438 littlemiltonwi@oxfordshirewi.co.uk

The Falklands War 1982: “a close run thing”

- Online Talk and live Q&A available on the museum website from 7pm, Wednesday, 18th May 2022
- A talk by Brigadier David Chaundler, who led 2nd Battalion, The Parachute Regiment, as a Lt-Colonel during the conflict
- Marking 40 years on from the conflict fought between British and Argentinian forces over the Falkland Islands
- Free to view on the museum's website, with donations welcome.

Video Link: <https://www.sofo.org.uk/whats-on/falklandswar1982/>

The next in Soldiers of Oxfordshire (SOFO) Museum's series of online talks, The Falklands War 1982 - A Close Run Thing will be streamed on the museum website from 7pm, 18 May 2022.

Nearly 40 years earlier, speaker Brigadier David Chaundler (then Lieutenant Colonel) was parachuted into the South Atlantic to take over command of the Second Battalion of the Parachute Regiment (2 PARA) following the death of his old friend, Lt-Col. 'H' Jones. Jones was killed in action during the Battle of Goose Green.

Arriving in Goose Green four days after the battle, he would see 2 PARA through to the end of the conflict and the surrender of the occupying Argentinian forces. While commanding 2 PARA, the battalion would open-up the southern flank, witness the air attack on the Sir Galahad and Sir Tristram, before moving up onto the northern flank and taking part in the Battle for Wireless Ridge.

He and 2 PARA would eventually take Port Stanley - against orders.

The talk will also be followed by a live Q&A, allowing viewers to ask further questions about his experiences during the conflict. No digital ticket, sign up or registration is required to view this talk - but the museum asks for donations to support their continued work caring for the county's military collections, and in bringing stories like David's to a wider audience through events like these.

SOFO Museum would also like to thank Lucy Group Ltd for sponsoring this event.

Those that miss the live event or are unable to join can still 'catch up' as an archived feed will be made available using the same link shortly after the live event ends.

GREAT MILTON **NEIGHBOURHOOD WATCH**

Hi, fellow residents, neighbours & friends of Great Milton.

Thames Valley Police Event

The event held on 23rd April at the Pavilion was greatly enjoyed by all who attended, for very useful help and advice on security matters with a large range of security items available and bicycle security tagging too. And for the kids, a chance to explore and play with the police vehicles, along with the fire engine, especially having the opportunity of having fun using the engine's hoses, and also to switch on the "Blues and Twos."

We would like to extend our grateful thanks to:

Sergeant Vicky Ball, Police Constables Natasha Davis, and Matt Davis

Police Community Support Officers Claire Keogu and Tom Rogers.

Oxfordshire Fire & Rescue Service, Wheatley Fire Station.

Crew Manager Craig Baldwin, & His Crew, Andrei Viscu, Tom Harper,

Simon Turner, Roodson Barbosa and James Cunningham

for their help and support at this event.

This event will be repeated at

THE PAVILION ON SATURDAY 16th JULY

Our Next Event

Saturday 11th June

We will be having a stall at this year's Village Fete

With various items of interest including :-

Help and advice on how to increase home and vehicle security
and other crime prevention techniques.

All supported with leaflets and other items of interest.

And the return of the fire engine too!

To keep updated and to alert others

Our Neighbourhood Watch WhatsApp Group is now in operation.

If you would like to be included in the group

please contact our two Neighbourhood Watch representatives

Jola Miziniak and Rod Snowdon

Contact Numbers on page 3 of the Bulletin

QUIZ NIGHT @ THE NEIGHBOURS' HALL

FRIDAY 13th MAY 2022

STARTING AT 7:30pm

**All Proceeds are for the
Neighbours Hall Kitchen
Renovation Fund**

**Come along, have a fun evening and
test your knowledge of a range of
subjects in a friendly atmosphere**

ENTRY IS BY TICKET ONLY

**These are available at
The Village Shop and cost £5 p.p.
Please feel free to bring snacks for
the half-time break. Drinks will be
available from the bar.**

QUIZ WINNERS WILL RECEIVE A PRIZE

GREAT MILTON – TUG OF WAR

Saturday 28th May – Great Milton Recreation Park



Six village
challenge

First pull at
11.30am

Party at The Bull
7.30pm – Band and
DJ

HOLLANDS FARM BEEF
TRADITIONAL • SUSTAINABLE • LOCAL

Greenplant.

Fun for all the family
Beer | Hollands Farm Burgers | DJ & Band @ The Bull
Money Goes to the Church Tower Fund



Platinum Jubilee Celebrations in Great Milton

Saturday 4th June

Special Jubilee menu and events at The Bull
from lunch 'til late (including music and an outside bar)

Sunday 5th June

Village Jubilee Picnic on the Rec - 12-2pm

BYO picnic food | drinks | picnic rugs | fold up chairs
Join in and share with friends and neighbours.

There'll be music to sing along to, wave your
flags or simply enjoy. Pavilion toilets will be open.

NB: Weather dependent



The Community Room home of **Great Milton History**

Browse the Archive
Purchase Books
Study Old Maps
Contribute to the collection
of village Family History
Open on Wednesdays
11:00am – 1:00pm
or by arrangement
[http://www.great-milton.co.uk/
great-milton-history/](http://www.great-milton.co.uk/great-milton-history/)

Great Milton Website

Have you seen the website?
<http://www.great-milton.co.uk/>

It is important to keep it
up to date so please could you
advise Tim Darch of any updates
that need to be made
(contact@clerkgreatmilton.co.uk)

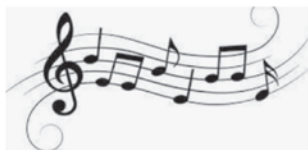
MUSIC AFTER THE FETE

This year we are planning some
live music after the fete at The Bull.
We'll be hoping to add to the funds
raised at the fete in the afternoon.

Saturday 11th June 5pm - 8pm.

If you are a local musician and
would like to discuss taking part,
please email lucy.darch12@gmail.com

Or just make a note of it in your
calendar and come along and
enjoy the evening!



Garden Assistant Required

I have a small but interesting
garden and would very much
appreciate someone with a
little knowledge of horticulture
to join me in tending it for a few
hours a week.

Interested? If so please phone
Peter on 01865 872 611

The Three Villages Car Service

The Three Villages Car service exists to help people who are having difficulty in getting to their doctors' appointments.

If you have to get to your GP surgery or Thame Hospital for an appointment and need help getting there, give us a call and we will help if we can.

**Jane Jefferis – 01844 278743 or
Wendy Richardson – 07763 800467.**

Need a venue? The Pavilion & Recreation Ground

**Ideal for children's parties,
meetings, family get
togethers, classes and
lessons, corporate days and
sports events.**

**Table and chair hire also
available**

**For booking and more info,
please call Michele on
01844 278233**

Neighbours' Hall

A large recently refurbished community Hall with central heating, new lighting and well-equipped kitchen. The Hall benefits from a bar, stage and smaller room opening on to an enclosed patio garden area overlooking Le Manoir orchard. The Hall has good car parking facilities. It is ideal for community groups, children's parties, family get togethers, company functions, weddings and special celebrations.

Available for hire by the hour or the day.

Cost for hiring
£15 per hour, £120 for the full day

Please contact our booking secretary

Janet Smith 01844 278415 for further details

www.great-milton.co.uk/community/great-milton-parish-council-18553/community-halls/



Unfinished projects or new resolutions? Join us at the

*Great Milton
Art & Craft Group*

Great Milton Pavilion
6.30-9.00pm
First Monday of the month

No cost. Just bring your own materials

Any questions email:
carina.martin@gmail.com

Portrait Photography

by Nick Belcher
Great Milton



Renew your website profile head shot or create a memorable family picture.
With my lighting set up and relaxed approach you'll see yourself in a new light.
Photo session plus editing & 8 prints - £100. Call 07976 684009 www.nickbelcherphotography.co.uk

Photo: Kieran Donnelly, Great Milton



LOVED YOU LOTS

Have you ever wondered what to do with those old clothes in the attic? The ones that you can't bear to give away or sell because they're so full of memories, or they could be something from someone no longer with us - all of them can be turned into our beautiful keepsake memory bears, animals, cushions and much more.

info@lovedyoulots.co.uk

www.lovedyoulots.co.uk

Contact Penny Cole - 07710 265102

BULLETIN ADVERTISING

1/4 page (w62mm x h90mm)

£5 or £50 per year

1/2 page (w128mm x h90mm)

£10 or £100 per year

Full page (w128mm x h185mm)

£20 or £200 per year

Full back page colour

£35 or £350 per year

Adverts for community or fund-raising events can have quarter page free. Larger sizes are charged at half the normal rate.

Please contact Tim Darch
Midsummer Cottage, Church Road,
Great Milton, Oxford OX44 7PA

Tel: 01844 278347

Email: contact@clerkgreatmilton.co.uk

Private **CLEANING**
OXFORDSHIRE



01865 58 08 79



07411 606 609

www.privatecleaningoxfordshire.co.uk

privatecleaning_oxfordshire@yahoo.co.uk

- ✓ We are based in Wheatley
- ✓ We have 10 years experience
- ✓ We can provide excellent references
- ✓ We are fully insured
- ✓ We are family-run



Waterperry
Gardens



Gardens, Teashop, Plant Centre,
Play Area, Orchards, Museum,
Art Gallery, Courses

Open All Year Round

Waterperry Gardens, Nr Wheatley,
Oxford. OX33 1LA. T. 01844 339226.

www.waterperrygardens.co.uk

Spring at Waterperry

Waterperry Gardens – eight acres of spectacular ornamental gardens with a fascinating history and one of the country's finest herbaceous borders – blooming with Lupins and Alliums at this time of year. There is a Plant Centre, Garden Shop, Gift Barn, Gallery, Rural Life Museum and Teashop. There are year-round events at Waterperry from theatre productions & opera in the Amphitheatre, art festivals to children's events in the holidays & festive Christmas markets. See the website for all the wonderful things on this year, sure to keep the whole family entertained. Visit waterperrygardens.co.uk for more details.

Did you know it is now possible to hire out individual rooms or even the whole of Waterperry house for meetings and events in the lovely grade II listed Georgian building? For more information visit waterperryhouse.com

*Shop for sustainable, plastic free, eco-friendly products
that actively improve & give back to our planet & society*

*If your 2021 resolution is to use less plastic & be more
eco-friendly, then we have some amazing products to help.*

Browse our online store for hand-picked quality products from small brands. Each eco-friendly purchase is a step in the right direction, helping to safeguard our planet by using products that are plastic, paraben, BPA, & waste free



www.gatheringgreen.net

Free local delivery to The Haseleys & Miltons
using 'local collection' at checkout

Sustainable Life Coaching

also available, to help you audit your current approach and offer suggestions
on ways to use less waste, less plastic and be more sustainable
info@gatheringgreen.net

REALLY SHARP

KITCHEN KNIFE AND GARDEN TOOL SHARPENING SPECIALIST

KITCHEN KNIVES

SHORT KNIFE (UP TO) 5" OR 125MM

LONG KNIFE (OVER 5" OR 125MM)

MEAT CLEAVER

GARDEN TOOLS

GARDEN SHEARS

SECATEURS

HALF-MOON EDGING IRON

HOE

CHAIN-SAW CHAINS

HEDGE CUTTERS

AND MUCH MORE....

EMAIL CHRIS@COOPERS-COTTAGE.COM FOR A PRICE LIST.

Graham Blake soft furnishing

- Loose covers
- Curtains
- Re-Upholstery
- Tracks & Poles

TEN YEAR GUARANTEE

For personal, helpful service
please call

Tel: 01844 261769

Mob: 07802 213381

grahamblake123@btconnect.com

www.grahamblake.com

PRIVATE CHAUFFEUR

AVAILABLE

To Drive Your Car

@ Hourly Rates

Tim Sugrue
The Barn
Chippinghurst

M: 07733 106621

E: tim2sugrue@yahoo.com



'Richard Sweeps'

Your friendly, local engineer
from Little Milton, registered
with the National Association of
Chimney Sweeps

Since 2011

KEEP YOUR HOME SAFE, SIT BACK AND RELAX!

T: 01844 278654

E: RichardSweeps@outlook.com

Greenplant.

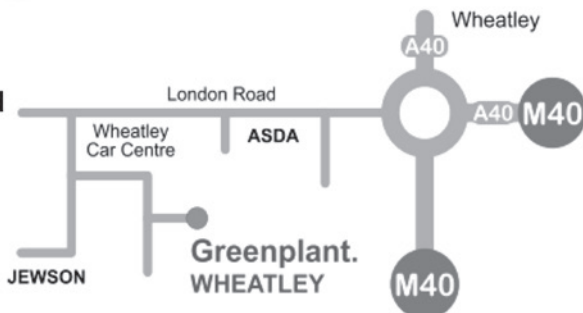
Plant & Tool Hire



Your first choice for Plant and Tool Hire.
Quality Equipment, Competitive Prices,
Unbeatable Customer Service

Where to find us...

Greenplant.
Unit 1 London Road
Wheatley
Oxford
OX33 1JH



www.greenplant.ltd.uk

01865 876 000




Sonite

NICEIC Approved Electrical Contractor
Domestic & Commercial
Over 30 years' experience
Locally based

Services include:

- Installation
- Maintenance & fault finding
- LED & Garden lighting
- Fuse board upgrades
- Testing
- EICR & PAT testing (incl. landlord certificates)
- Rewires

 sdheasman@yahoo.co.uk

 07734 477949

M.R.F. LIMITED

Window Cleaning Services

M. FRY

**Domestic & Commercial Window
Cleaning & Gutter Maintenance**

Fully Insured

**Member of the Federation of
Master Window Cleaners**

1 LONDON ROAD, WHEATLEY, OXFORD OX33 1YW

E: michael.fry4@btopenworld.com

MOBILE: 07887 515168

SOUTH OXFORD BUILDING SERVICES LTD

YOUR LOCAL BUILDER
EXTENSIONS | RENOVATIONS
LISTED BUILDINGS

**CONTACT US
01844 278100**

www.southoxfordbuildingservices.com

Paterson

health & social care

Do you or a
loved one need
care at home?

Sometimes in life, we need a helping hand.
Having someone care for you in your own home enables
you to maintain your independence, routine and
offers a fantastic alternative to care in
a nursing or residential home.



From 8 hour shifts
to live-in care... contact us
today to see how we can help

www.paterson-healthcare.co.uk

01869 325530

SANDY LANE FARM

Local. Seasonal. Organic.
Est. 1985.

sandylanefarm.co.uk

Organic veg box delivery
Shop when it suits you
Free delivery / No need to be in
A wide range of boxes



Shop in person at our **farm shop**: Sandy Lane Farm, Tiddington OX9 2LA
Thursday 10:00 - 5:30 Friday 10:00 - 5:30 Saturday 10:00 - 14:00

FLEXIBLE OFFICE SPACE ON THE DAYS YOU NEED IT.

Get the 'working from home' balance right. One hot-desk or space for the whole team

- Spacious
- Ready to go
- Daily booking



Serviced Offices | Business Units | Meeting Rooms | Virtual Support



Monument Park, Chalgrove OX44 7RW

01865 893200 | hello@jennings.co.uk | jennings.co.uk

Jennings
a home for your business



A D OUSLEY



Domestic & Commercial ELECTRICIAN

All types of electrical installation work
including test and inspection and certification

Tel: Adam on 01844 339793 Worminghall
or 07976 352293 (8:00am – 5:30pm)

Email: adousley01865@gmail.com

*Registered member of the
ECA and NIC EIC*

Expert Painting & Decorating

Professional indoor and
exterior painting and decorating.

Whether for your home or business, benefit from our
twenty-plus years of experience.

For full details, contact Sean on 07955 489248



01865 875710

47b High Street, Wheatley,
Oxford OX33 1XX

MORE GOOD HAIR DAYS

thesalon_wheatley@hotmail.com



[thesalonwheatley](https://www.thesalonwheatley.co.uk)

Jennings
**containers
& storage**

FLEXIBLE STORAGE SOLUTIONS

For **personal & business** use



**Secure
Storage Site**



**24/7
Access**



**Container offices
& workshops available**



www.jenningsstorage.co.uk ☎ **01865 891 406**

Wheatley Dental Practice **01865 873314**

We are currently accepting new patients at our friendly local dental surgery.
Please phone our receptionists or call in for more details!
Tooth whitening and facial aesthetic treatments available.

Catherine Peers BDS, Claudia Conde MClint Dent Lond.
Dental Surgeons

Rachel Hyde RDH, Julie Davies
Dental Hygienists

96 Church Road, Wheatley, OX33 1LZ
wheatleydental@gmail.com



£10 OFF
MOT
Quote mot10

Our Services

MOT's | Servicing | Tyres | Brakes | Clutches | Wheel Alignment
Suspension | Air Con Regas | Fault Diagnosis
Exhausts | Loan Cars Available

We would like to take this opportunity to thank you, and wish you complete safety in these difficult times

01844 278177



Free local collect & return service available

Camp Industrial Estate, Milton Common, OX92NP (M40 - Junction 7)
01844 278177 www.rcpservices.co.uk Workshop@rcpservices.co.uk

Whatsapp us





We are a unisex salon offering the latest in hair styling and design.

Our friendly and helpful team will help you achieve the look you are after with the minimum of fuss, so that your time spent with us is a relaxing experience.

Please call us to book an appointment or discuss your requirements, and we will be more than happy to help you in any way possible.

Tel: 01844 279503

Email: sistersedge@btinternet.com

Web Page: sisters-edge.co.uk

computer problems ?

call THE WINDOWS CLEANERS

HOME AND SMALL BUSINESS COMPUTER SUPPORT

system upgrades
virus removals
performance improvements
wireless networks
internet solutions
and more

for a speedy, jargon-free appointment:

07947 700746

01844 698432

Est. for over 15 years

ASHURST ARCHIVES

STORAGE

- Archive and Documents
- General Household
- Car
- Boat
- Caravan
- Business
- Short or long term

HOLLANDS FARM GREAT MILTON

jonnie@hollandsfarm.com
07768 408389

Great Milton Toddler and Baby Group



Come along and join us for a coffee and a chat whilst your children play.
We are a small, friendly group open to all Mums, Dads and Carers in the local area.
We have lots of toys for all ages to enjoy in a relaxed and welcoming environment.

Great Milton Village Hall

Friday 9:30 to 11.30

For more information contact:
Chrissie on 07759 283490



Electric & Hybrid Specialists

Servicing & Repairs

MOT Testing incl. While You Wait

Up to Dealer Level Diagnostics

Air-Conditioning On All Vehicles

Clutches incl. DSG

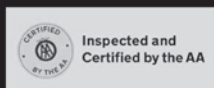
Tyres, Brakes & Tracking

Free Courtesy Cars & Collections*

Oxford Road, Tiddington, Oxon, OX92LH

01844 339210

www.tiddingtongarage.co.uk



****subject to T&C's***



Windmill Windows

Est 1999

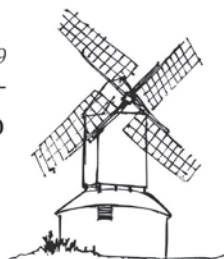
www.windmillwindows.com / Tel: 01844 237070

"Windmill Windows is a local family run business established in 1999, supplying and installing a large range of products in all materials, including uPVC, Composite, Timber and Aluminium.

Please feel free to pop in to see us, call us or visit our website for any information you are after. All our quotes are free of charge and obligation free."

Address:

Unit 1,
68 Worminghall Rd
Oakley, Bucks
HP18 9QY



Products:

- *Windows
- *Doors
- *Bi-Folds & Patio Sliders
- *Conservatories
- *Fascia / Soffit & Guttering
- *Glazing

OXFORDSHIRE & BUCKINGHAMSHIRE

ALL SEASONS TREE CARE

Specialists In Tree Care & Garden Management

- Felling • Reductions & Thinning
- Crown Cleaning • Tree & Scrub Clearance
- Hedge Trimming • Stump Grinding • Logs

Domestic & Commercial

EMERGENCY 24 HOUR SERVICE

FREE No Obligation Quotes

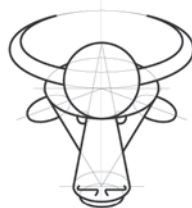
5 Million Public Liability NPTC & Lantra Qualified

www.allseasonstrees.com

Mob: 07823 332 247

Tel: 01865 430 536

Tel: 01869 250 473



J.M. DUDLEY
GRAPHIC SERVICES

Artwork Creation
Photo Retouching
Colour Printing
Photocopying
Scanning

01844 279761 07721 457035

JONNY@ORODRUI.CO.UK

Diary

Monday	Spark Yoga – The Neighbours Hall. 9:15am <i>contact Claire – sparkyoga1111@gmail.com to book or for more details</i> Arts & Crafts Club – The Pavilion. 1st Monday of each month. 6:30 – 9:00pm <i>contact carina.martin@gmail.com</i>
Tuesday	Athletics Club. Year 8+. 6:00–7:30pm. Horspath Sports & Athletics Ground. <i>enquiries.gmac@gmail.com</i> Bingo – Neighbours Hall. 7:45pm <i>contact Ann Price – 01844 279474</i>
Wednesday	GM History Archive, The Community Room, The Bull. 11:00am – 1:00pm <i>or by appointment</i> 2nd Wed: Coffee Morning at The Methodist Chapel. 10:00am – Midday Fitness & Yoga – The Neighbours Hall. 6:00pm – 7:15pm
Thursday	The Neighbours Club. Alternate Thursdays. <i>contact Janet Earl – 01844 279432</i> Sandy Lane Farm Market. 2:00pm – 6:30pm. <i>contact Sandy Lane Farm – 01844 279269 www.sandylanefarm.net</i> Athletics Club. Year 4–7. 6:00–7:30pm. Horspath Sports & Athletics Ground. <i>enquiries.gmac@gmail.com</i> Badminton – Great Milton School Hall. 7:00pm – 10:00pm <i>contact Daphne Holland – 01844 214198</i> Bellringers – St. Mary's Church Tower. 7:30pm – 9:00pm <i>contact Pat Cox – 01844 279300. www.gm-bellringers.freeuk.com</i>
Friday	Vinyasa Flow Yoga – The Neighbours Hall. 9:15am <i>contact Claire – sparkyoga1111@gmail.com to book or for more details</i>
Saturday	Old Field: 2nd Saturday of each month. 10:15am – 12:00pm. <i>Contact Alex Kirkman – 01844 278090</i>

May

Fri 13th	Quiz Night at The Neighbour's Hall.	7:30pm
Mon 16th	Parish Council Meeting in The Pavilion	7:30pm
Thurs 19th	Neighbours Club: Outing to the Wildlife Hospital at Haddenham	—
Sat 28th	Tug of War: 5 Villages! In The Recreation Ground	11:30am
	Party at The Bull. Band and D.J.	7:30pm

June

Sat 4th	Jubilee Events at The Bull. Lunch until late. Music and outside bar.	—
Sun 5th	Jubilee Picnic on The Recreation Ground (weather allowing)	12:00pm
Sat 11th	Church Fete at The Recreation Ground, along The Green and The Old Barn	2:00pm
	Live Music at The Bull	5:00pm

All copy (except adverts) to **gmbulletin@hotmail.co.uk** by **20th May 2022**.

Sheppard Cottage, Lychgate Lane, Great Milton, Oxford OX44 7PB.

Adverts to **Tim Darch** Midsummer Cottage, Church Road, Great Milton, Oxford OX44 7PA.

01844 278347 • **contact@clerkgreatmilton.co.uk**

The views expressed in this bulletin are not necessarily those of the Editor nor of the Parish Council.

The Editor reserves the right not to print items submitted for publication, and to edit those which are published.

Thinking of selling your artwork?

Mallams
1788

Design & Modern Art Specialist Max Fisher, is available to give free confidential valuations on any piece(s) you are considering selling at auction.

Home Visits also available

Enquiries: 01865 241 358 or max.fisher@mallams.co.uk

www.mallams.co.uk

