

## In this issue

Cliddesden Players "Quiet On Set" .....	1	100 Club .....	7
Cliddesden news in the Gazette.....	2	Farleigh parish playgroup.....	7
Coffee morning .....	2	Parish council pages .....	8
Horticultural society .....	3	Cliddesden Primay School 150 years.....	10
Women's Institute.....	4	Friday Fun Club .....	12
Film club.....	5	Youth group .....	13
Wine walk.....	6	Village directory.....	14



## The Cliddesden Players' 2026 Summer Production



# "Quiet On Set"

A comedy drama written by Emily Golborn

**Cliddesden Village Hall - Friday 12<sup>th</sup> & Saturday 13<sup>th</sup> June 8pm**

When Valerie, the new weather girl, joins the CHN 'News at 7' studio, desperate to progress her career, she is shocked at the off-screen work environment she's walked into. The news editor has always hated Ken, the lead news anchor, the script writer has a personal motive for wanting revenge on him and the makeup artist is sick of being treated so badly. Their combined actions lead to some very funny consequences which don't bode well for Ken's future!

And Ken's wife, Jenny, has no idea what was just broadcast or what her husband is really like.

**Tickets £12.**

**Advance payment is required for Play or BBQ – via cash, cheque or BACS (preferred option) with details given at time of booking.**

(Please advise if wheelchair user or mobility difficulties)

**Saturday 13<sup>th</sup> BBQ 6.00 – 7.15pm** (burger or hot dog + salads) £6 per serving. BBQ token to be issued at check-in desk.

Please state on booking if vegetarian option required. Unfortunately, we cannot offer options to cater for allergies, please advise if there are any concerns. Special requests cannot be made on the day.

**Contact:** Angie on 01256 475848 or email [events@cliddesdenhall.org.uk](mailto:events@cliddesdenhall.org.uk)

Licensed Premises. We prefer to operate a CASH bar and refreshment service to limit card payment transaction fees.

Refreshments ... Prosecco ... ice creams!

*If you can help, even for an hour, with stage set-up the previous weekend 6 - 7th June, then please get in contact.*

*We need more volunteers to cover all the jobs that creating the set involves!*

*New faces would be most welcome and appreciated.*

## Cliddesden news in the Basingstoke Gazette

Four years ago, I took on the writing of the Cliddesden News entry for the Basingstoke Gazette. Throughout these years, I have thoroughly enjoyed representing our village and reporting on all the great things that are happening, as well as getting to know lots of lovely people from across the community.

However, my family and work life are fast evolving and I feel that the time is right to give someone else the opportunity to take the reins, from (potentially) August or September - or as soon as anyone wishes!

The Gazette is published on a Thursday each week, so I usually send in my entry the preceding weekend. The writing doesn't have to be long (occasionally there is a week where nothing needs to be published at all) but I try to focus on a variety of events, to give a flavour of village life. By reading the Village Newsletter, chatting to villagers or scanning the Facebook page, I have often been spoilt for choice in my reporting! This is a voluntary position, but very rewarding; please do contact me if you would like to discuss further and I can then put you in touch with the Gazette Editors.

Thank you,

*Helen Walker*  
*helenvivash@gmail.com*

## Cliddesden Millennium Village Hall

Please come along to have a natter and make new friends, browse the second-hand book stall, and of course enjoy a good cuppa and a slice of cake!

The 100 club is also drawn here each month.



We have table tennis available and all the equipment you will need if you fancy a game.

We meet on the second Monday morning of each month, from 10.30 - 12 noon.

Hope to see you there, all ages are welcome.

**Next date:** Monday June 8th at 10.30am.



# Cliddesden, Farleigh Wallop & Ellisfield Horticultural Society

The three villages Gardening Club

Chairman: Seumas Foster tel: 07768 443658 email: [seumas@cropfosters.co.uk](mailto:seumas@cropfosters.co.uk)  
 Secretary: Marilyn Smith tel: 462584 email: [willow.ms@btinternet.com](mailto:willow.ms@btinternet.com)



## June

It's the middle of the calendar year and technically the middle of the gardening year, however after a great start the garden is just getting into its stride. There is so much more to come, this is perhaps the best part of the year. Spring flowers and vegetables are finished and will be replaced with summer flowers. It's full steam ahead for the summer, we just need a bit of rain to have an abundance of plants in the next month or two. The vegetable patches are filling up fast; the quick growing plants are ready to harvest. Root veg for the autumn and winter are establishing. Watering is the next job to keep them growing and not bolting. I think leeks are probably the best value over winter.

Go for successional planting for quick turnover plants like lettuce and radish and do have a go at something different if you want to investigate a new plant. This year we have planted two rows of Salsify, we grew it years ago, loved the taste, and it is time to go again!

When you get the chance do 'an Attenborough' and have a close look at the detail of the leaves and flowers in your garden, it's a real delight and an eye-opener about the miracle of nature so wonderful. If you haven't got a garden look at the plants on the roadsides, they are just as interesting.

## June Visit

There will be a garden walk, however at time of writing this note the details are still being finalised, so please keep a look out in your emails for a message from the Society.

If all goes according to plan I think we will have a great visit lined up for you.

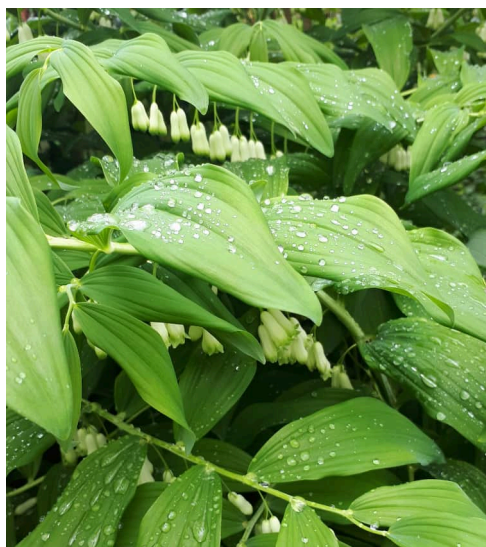
## Nick Bailey from Gardeners World Save the date - 21<sup>st</sup> July

There will be a talk by Nick Bailey, entitled 'The Road to the Chelsea Flower Show', at Itchen Abbas Village Hall. This is a collaboration between our Society and the Valley Gardeners.

Full details and an invitation will be sent out soon to all our members, and of course friends and visitors are also very welcome.

I recently went to see Nick Bailey deliver a talk to the Sherfield and District Gardening Club and it was a very entertaining evening, full of anecdotes and some very useful horticultural advice, so I can recommend coming to hear him.

*Seumas Foster*



**theWI**  
INSPIRING WOMEN

# CLIDDESSEN

On Monday 18<sup>th</sup>, 15 members attended our May AGM and meeting.

Janet welcomed us all and then gave out the apologies received from Suzanne, who is away on her bowls tour. (Treasurer's report was given last month)

Janet then handed over to Julia, who gave us her last secretary report showing photos of the last year's speakers and events.

All members said how they had enjoyed all the speakers and events from the past year and how they are looking forward to this year's program.

Although Julia is stepping down as secretary, she will be staying on the committee helping with the MSC system.

Next Janet gave us her final president report, saying she had enjoyed her time as president but unfortunately a lot of her appointments seem to always be on a Monday, which made things difficult. She was still going to be staying on the committee to help the new president in anyway needed.

Janet thanked Julia for being a brilliant secretary, the committee and members for everything they had done to help our WI run smoothly.

The meeting was then passed over to our new president Gill Hughes and new secretary Caroline Poulter.

Gill thanked Janet and Julia for all their hard work over the last years and said how they were looking forward to working with the committee and members.

A few business notices were given out.

Monica and Jenny were welcomed onto the committee and members were reminded subs are due now.

All members present were given a program of our speaker and events taking place over the next year.

The meeting ended with everyone saying how nice a morning they had.

Our next meeting is on Monday 15<sup>th</sup> June at 10.30. Our speaker will be Mr Alan Framp-ton talking to us on "English traditions and customs".

A full list of our program is displayed in the village hall or you can contact Caroline at [cliddesdensc@hampshirewi.org.uk](mailto:cliddesdensc@hampshirewi.org.uk) for more information.

*Caroline Poulter*



## Social and Entertainment Club

Cliddesden Millennium Village Hall

'You'll be sure of a warm welcome and a great evening'



Thursday 4<sup>th</sup> June

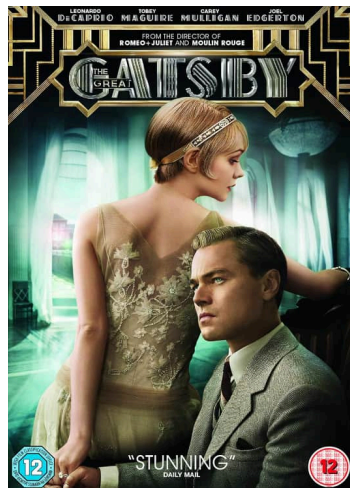
### The Great Gatsby

2013 — 142 minutes — Certificate 12

**PLEASE NOTE THAT DUE TO ITS LENGTH THIS FILM WILL START AT 7.45PM WITH A SHORT INTERVAL.**

Nick (Tobey Maguire) lives next door to a mysterious, party giving millionaire Jay Gatsby (Leonardo diCaprio) and across the bay from his cousin Daisy (Carey Milligan) and her husband Tom Buchanan (Joel Egerton). Tom has a penchant for wild parties and wild women. Nick is drawn into a world of the super rich, their illusions, lovers and deceits.

**Starring Leonardo diCaprio, Tobey Maguire, Carey Milligan, Joel Egerton, Isla Fisher and Jason Clarke**



Thursday 2<sup>nd</sup> July at 8pm

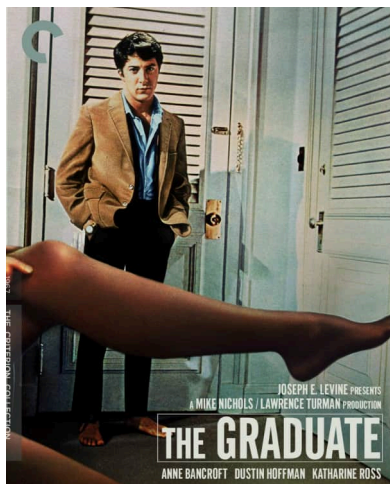
### The Graduate

1967 — 105 minutes — Certificate 15

Ben (Dustin Hoffman) recently graduated from college and his parents throw a 'Homecoming' party for him. Mrs Robinson (Anne Bancroft) his father's business partner's wife asks Ben to drive her home which leads to an affair between them.

The affair ends, but it comes back to haunt him when he finds himself falling for Elaine (Katherine Ross) Mrs Robinson's daughter.

**Starring Dustin Hoffman, Anne Bancroft, Katherine Ross, William Daniels, Murray Hamilton and Elizabeth Wilson**



The bar usually opens at 7.30pm and we start at 8pm. There is an intermission half way through during which refreshments and drinks at the bar are available at very low prices.

Admission is only £2 per person.

**Please note we work on a cash only basis.**

Everybody is welcome from wherever you live. We hope to see you there.

*Diane Rampton*

*dianerampton@btinternet.com*

**ST LEONARD'S CLIDDESSEN:**



**WALK**

Saturday

11<sup>th</sup> July 2026



COMMONWEALTH CELEBRATION OF QUEEN  
ELIZABETH'S 100<sup>th</sup> YEAR.

WITH WELCOMING HOSTS ACROSS THE  
VILLAGE

FROM 7 PM UNTIL LATE (11.30-ish)

Tickets £15 each (including first drink),  
available from:



John or Miche Donaldson on  
07770 950111 or  
[johnandmiche@yahoo.com](mailto:johnandmiche@yahoo.com)

Jo Capehorn 07528 856157 (by message) or  
[thecapehorns@me.com](mailto:thecapehorns@me.com)

Cash event in aid of church funds



# 100 Club



A big thank you to all who have continued with their membership and welcome to new members.

## April

1 <sup>st</sup>	339	D & A Thomas
2 <sup>nd</sup>	34	Terry Marsh
3 <sup>rd</sup>	140	Tom Stanley

NEW MEMBERS are always welcome – contact me using the details below. Thanks again for everyone's support of the village hall.

The draw was called at the Coffee Morning held at the Village Hall on 11th May 2026. Here are the lucky winners:

## May

1 <sup>st</sup>	90	Lesley Randall
2 <sup>nd</sup>	444	Tom James
3 <sup>rd</sup>	188	Marilyn Smith

Next Coffee Morning 8<sup>th</sup> June – do come along.

*Rose Beevers*

01256 475944, 100Club@cliddesdenhall.org.uk

## Farleigh Parish Playgroup



## Cliddesden Millennium Village Hall



Friday Mornings 11am-12noon Term Time

5<sup>th</sup>, 12<sup>th</sup> our Teddy Bears picnic at St Leonards,  
(closed on 19<sup>th</sup>) & 26<sup>th</sup> June  
3<sup>rd</sup>, 10<sup>th</sup> & 17<sup>th</sup> July

0 - 4 years old and their grown-ups. A warm welcome awaits you and we look forward to you joining us for a fun and happy time

Cost: £3 donation per family

**Melanie:** Qualified in early years (07833 528040)  
**Claire:** Qualified teacher (07757 498653)





Next Parish Council meeting  
07 July, 7.30pm all welcome.

## NOTES FROM THE PARISH COUNCIL AGM

Present, Parish Councillors and Clerk; Guests – County Cllr Juliet Henderson, Newsletter Editor David Brown, Village Hall Chairman and StaNHD representative, Les Smith; plus three members of the public.

Chairman Alan Tyler opened the 2026 Annual General meeting and welcomed all. Alan said he had enjoyed the last nine years as chairman; and this was made possible because of enjoying working with all colleagues on the Parish Council, so thank you to all.

The Chairman invited nominations for the new chairman for 2026/27, confirming that he did not wish to be nominated for a further year. A proposal for David Raggett was agreed unanimously. David returned thanks and expressed appreciation to the outgoing chairman on behalf of all.

**Newsletter update** Agreed to move to full delivery of paper copies from June issue with an initial print run of 235; the new format will be A5 and full colour throughout.

TO RECORD the Parish Council's thanks to Hazel Metz for managing the *Newsletter* distribution, collection and first tier delivery for the last 10 years, and with Hazel now stepping down, thanks to Alex Conboy for taking on the role. Particular thanks also to the team of distributors.

**Rights of Rivers** Cliddesden Parish Council adopted its own 'Rights of Rivers' declaration in line with and in support of that agreed and adopted by BDBC and initiated by Ward Cllr Kate Tuck. Agreed strong support in principle, and while the village is in a dry valley and the whole Parish is on the chalk, its aquifer feeds the River Loddon.

**The '30' mph roundels** on Farleigh Road have been 'repainted' funded by the Parish Community Infrastructure Levy (CIL), with thanks to Dave Rudge for initiating.

**Upper Swallick** – Les Smith gave an update on behalf of StaNHD, with discussion on responses to the planning application emphasising the importance of high levels of public engagement. To encourage all residents to respond; Les will give a further presentation to the Parish Assembly.

**Newsletter email distribution – If you are not on the mailing list and would like to be, please contact [clerk.cliddesden@gmail.com](mailto:clerk.cliddesden@gmail.com)**

## LOCAL ELECTION RESULTS

Congratulations to our re-elected councillors.

For County Council, Oakley & Candovers Division, Cllr Juliet Henderson re-elected. Juliet is now also Cabinet Member for Education.

For BDBC, Old Basing & Upton Grey Ward, Cllr Kate Tuck re-elected. Kate is also deputy representative to the Combined County Authority - Planning Advisory Board.

### **Letter from Ward Cllr Kate Tuck**

'A huge thank you to everyone who supported me at the ballot box. It's a real privilege to continue serving our community, and I'll keep working hard for every resident.

'I'm especially grateful to my campaign team, deliverers, friends and family who gave up so much time and energy over the past few weeks. We're also lucky to have such a strong local leader in Cllr Paul Harvey.

'On the doorstep, residents spoke passionately about protecting our precious chalk streams, and I'm determined to turn the Rights of Rivers Declaration into real action for the River Loddon, the River Test and our local tributaries.

'We are heading into uncertain times with local government reorganisation, but one thing will not change: we will always put residents first. People, not politics. Please do get in touch if I can help with any local issues.'

Kind regards, Kate  
[cllr.kate.tuck@basingstoke.gov.uk](mailto:cllr.kate.tuck@basingstoke.gov.uk)

**UPPER SWALLICK...** For anyone who has not yet make a comment – or anyone who finds they have additional information - please keep sending responses (via website or email) even though the advertised statutory consultation period has ended. This application has a long while to run yet and evidence of the strength of public feeling will be very important.

## PARISH PLANNING APPLICATIONS

**26/00838/HSE** (Validated 23 April) 5A Hackwood Lane. Detached Garage

**26/00802/OUT** (Validated 20 April) Land at Upper Swallick, Alton Road. Outline Planning Application for major development of c2,500 houses. See BDBC website for full details. All matters reserved, save for the formation of new accesses from the A339 and Woods Lane, and the alteration of accesses from Northgate Lane and Farleigh Rd

**26/00710/HSE and 26/00711/LBC** (Pending, validated 02 April) Old School Hse, Farleigh Rd. Two-storey rear and single storey side extension, with habitable space within the roof.

**26/00632/HSE** (Grant 13 May) 3A Hackwood Lane. New detached garage.

**26/00552/PIP** (To be decided by Development Control Committed of 10 June) Land South of Newland Lodge, Woods Lane. Permission in Principle for four dwellings and associated access.

**25/01313/OUT** (Pending 27 May) Land North of Bramble Bank, Farleigh Road. Outline application, with all matters reserved save for access, for up to 17 dwellings etc.

**24/00617/RET** (Pending 17 June 2024) 1A Millars Cottages, Station Road. Revised parking and landscaping, ref 20/00390/ FUL (retrospective).

## PLANNING APPEALS

**6007440** Appeal in progress re Land West of Millars, Station Road. Outline application with some matters reserved (appearance and landscaping) for the erection of four dwellings.

## TREE APPLICATIONS

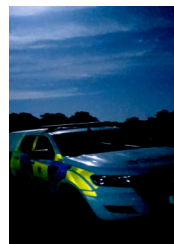
**T/00166/26/TCA** (Approve 06 May) Wheat Glade House Woods Lane. T1 Sycamore; reduce overhang to near boundary. T2 Horse Chestnut; reduce lateral branches by 1m.

**T/00134/26/TCA** (Approve 16 April) 17 Southlea. T1 Lime. Reduce to previous pollard points leaving height approx 6m, spread approx 3m.

**T/00239/26/TCA** Cliddesden Down House, Farleigh Road (Validated 26 May) T1 Horse Chestnut - Fell - Large Cavity at base. T2 Horse Chestnut - Reduce laterally 3, back to suitable growth points, boughs encroaching over highway, finishing spread 5m. T3 Oak - Reduce laterally 3m back to suitable growth points, boughs encroaching over highway, finishing spread 5m. T4 Beech - Fell - 30% dead falling into decline, suppressed. T5 Oak - Reduce laterally by 3m back to suitable growth points, reduce height by 3m, boughs encroaching over highway, finishing spread 7m and height 20m. T6 Ash - Fell - Category 2 *Hymenoscyphus fraxineus*, leaning over road

## POLICE UPDATE

Thanks to PCSO Andy Jones for speaking to the Parish Assembly.



Reported crime in Cliddesden is low, which very good news on the face of it; but maybe a reflection of under-reporting.

Describing the large area he and a few colleagues cover – policing needs intelligence to target resources.

Andy spoke of rogue traders offering maintenance services to the elderly and vulnerable and then charging extortionate rates. Neighbours can help, in being aware, intervening if possible and reporting.

**REQUEST TO PLEASE REPORT**, call 999 if any incident is happening then and there and any chance of catching perpetrators. If an incident is past, no one a the scene – call 101 or log online – search Hampshire Police, report a crime.

Police also need evidence to prosecute, just knowing, eg young drivers gathering and road racing – not sufficient – need to know where, where, to witness; or any detailed evidence, number plates, camera footage very useful.

PCSO 13301 Andy Jones

Mobile 07775542021

*andrew.jones.13301  
@hampshire.pnn.police.*

# Cliddesden Primary School



## Cliddesden Primary School celebrated 150 years!



On Thursday 21<sup>st</sup> May the school celebrated 150 years since the opening in 1876, with a special Victorian day.

The day began with paper registers then an assembly with strict Victorian rules led by Mrs Hussey our Humanities lead.

The classes followed these rules throughout the morning and the children were exhausted from getting up and down every time an adult walked in!

Lessons included spelling, beautiful handwriting and arithmetic. Oak and Chestnut classes learnt about the British Empire under Queen Victoria. They also studied some flowers and produced amazing still-life and pressed flower pictures. Beech class made peg dolls and practiced their handwriting too.



Willow class made badges using leaf rubbings from our special tree.



After some traditional games on the field, the afternoon brought special visitors – the mayor of Basingstoke, Councillor Jacky Tustain, and Queen Victoria.



The whole school, parents and the wider community came together to celebrate with country dancing, singing and of course, a slice of Victoria sponge and tea. It was great to see so many former teachers and pupils too.



The children had made some crafts and short-bread to sell and enjoyed buying some treats.



During the week, the children had been working hard on aspects of the school's history.

They shared their work with parents and the community, in a fantastic exhibition.



A time-capsule will be sealed with memories from the children, to be opened at the school's next big birthday.

Thank-you to everyone who sent in memories and photographs of their time at Cliddesden Primary School. We hope there will be many new memories for our young people in the future too.

# The FRIDAY FUN CLUB!

**3.30-4.30pm**

at St Leonard's Church,  
Cliddesden

EVERY FRIDAY DURING TERM TIME

Contact Claire for more details [clairenunn1234@gmail.com](mailto:clairenunn1234@gmail.com)

Activities: CRAFTS, ADVENTURE, SONGS, DRAMA, FRIENDS & FUN!

ST LEONARD'S CHURCH

# YOUTH GROUP

AGES 10-14



12 NOON-  
1.30PM

14TH JUNE

SECOND SUNDAY OF THE MONTH

---

ST LEONARD'S CHURCH, CLIDDESSEN

# VILLAGE DIRECTORY

<b>POLICE</b>	PCSO Andy Jones (Basingstoke Rural South) andrew.jones.13301@hampshire.pnn.police.uk	07775 542 021
<b>NEIGHBOURHOOD WATCH</b>	Simon Barker	07732 100 990
<b>PARISH COUNCIL</b>	www.cliddesdenparishcouncil.gov.uk Susan Turner (clerk) Alan Tyler (chairman) Mark Gifford Dave Rudge Nicola Barnes David Raggett	07515 777 060 460 425 07504 104 621 07813 070 261
<b>TREE WARDEN</b>	Alison Mosson	07721 046 146
<b>WARD COUNCILLORS</b>	Onnalee Cubitt Kate Tuck Sheena Grassi	07762 067 411 07762 067 411 07561 060 596
<b>COUNTY COUNCILLOR MEMBER OF PARLIAMENT</b>	Juliet Henderson Alex Brewer MP House of Commons, London SW1 AOM	07738 289 849
<b>MILLENNIUM VILLAGE HALL</b>	www.cliddesdenhall.org.uk Leslie Smith (Chairman) Angie Fewster (Vice Chair) Ken Rampton (Caretaker) Pat Rampton (Lettings Secretary) Jo Capehorn (Secretary) Julie James (Treasurer)	07973 922 560 475 848 461 034 461 034 07528 856 157 363 753
<b>NEIGHBOURHOOD PLAN</b>	www.cliddesdenmp.wixsite.com/cliddesdenmp	
<b>CLIDDESSEN COMMUNITY CONSERVATION GROUP</b>	cliddesdenconservation.org Alison Mosson (Chairman) Angie Fewster (Secretary)	07721 046 146 475 848

<b>JOLLY FARMER</b>	<i>thejollyfarmercliddesden.co.uk</i>	<i>thejollythai@gmail.com</i>	<b>358 288</b>
<b>CLIDDESSEN PRIMARY SCHOOL</b>	<i>www.cliddesden.hants.sch.uk</i> Kenneth Davies (Headteacher)		<b>321 571</b>
<b>1<sup>st</sup> CLIDDESSEN BROWNIES &amp; GUIDES</b>	Hayley Louise	hayley-scott@live.co.uk	<b>07740 116 853</b>
<b>FARLEIGH PLAYGROUP</b>	Claire Nunn Melanie Gill		<b>477 197</b> <b>07833 528 040</b>
<b>ST LEONARD'S DISTRICT CHURCH COUNCIL</b>	<i>www.farleighcandoverandwildfield.org.uk</i> Rectory: Revd Jennifer Wright Peter Raine (Church Warden) Val Gofton-Salmond Julian Nunn	rev.jenn4@gmail.com peter.c.w.raine@btinternet.com	<b>593 263</b> <b>381 221</b> <b>474 425</b> <b>477 197</b>
<b>FILM CLUB</b>	Diane Rampton	dianerampton@btinternet.com	<b>467 533</b>
<b>HORTICULTURAL SOCIETY</b>	Seumas Foster (Chairman)	seumas@cropfosters.co.uk	
<b>WOMEN'S INSTITUTE</b>	Janet Fagg (President) Pat Rampton (Vice President) Julia Ross (Secretary)	jkfagg@gmail.com cliddesdensec@hampshirewi.org.uk	<b>461 034</b>
<b>CLIDDESSEN &amp; FARLEIGH WALLOP EDUCATIONAL TRUST</b>	Vicky Tibble (Secretary & Treasurer)	Vicky.tibble@outlook.com admin@portsmouthstates.co.uk	<b>07552 927 692</b>
<b>AGE CONCERN</b>	The Orchard, White Hart Lane, Basingstoke RG21 4AF reception@ageconcernbasingstoke.freeserve.co.uk		<b>423 874</b>
<b>B/STOKE ASTRONOMICAL SOC HILL &amp; DALE</b>	<i>www.basingstokeas.org.uk</i> Jean Frost (Editor) Ben Maunder (Distributor)	hillanddaleeditor@gmail.com	<b>327 859</b>
<b>VILLAGE ARCHIVE</b>	<i>www.cliddesden-archive.uk</i> David Brown	dave@cliddesden-archive.uk	
<b>VILLAGE NEWSLETTER</b>	Editor: David Brown Copy date 20th preceding month to: bootofthedailybeast@gmail.com		
<b>CLIDDESSEN CHAT</b>	<i>www.facebook.com/groups/cliddesdenchat</i>		

THE CLIDDESSEN PLAYERS PRESENT

**QUIET**

**ON SET**

THE WEATHER FORECAST

FRI

SAT



12°



13°

Comedy written  
by Emily Golborn

**TICKETS**  
**£12**

Friday 12 &  
Saturday 13 June 8pm

Saturday 13 June  
BBQ from 6pm - 7.15pm  
£6 per serving

Cliddesden  
Village Hall

Licensed Premises • Refreshments

Tickets: Call Angie on 01256 475848 or email [events@cliddesdenhall.org.uk](mailto:events@cliddesdenhall.org.uk)