



Operational Inspection Report – Play Equipment

Site: Orford Road Play Area, Swaffham

Date of Inspection: Tuesday 9th June 2020

On Behalf Of: Swaffham Town Council

Inspector: Alan Loades, Apertus Play & Sport Inspections
RPII Operational Inspector – Children’s Playgrounds
(Certificate No. OP3107)



Important Notes

- This is an operational report with the inspection looking at the general “state of health” of the equipment with regards to wear and tear, damage and any vandalism. ***It is not a compliance report.***
- The inspection is undertaken at ground level or via reasonable access on the equipment itself, it is therefore a visual inspection only of any overhead beams or structures. The operator is reminded that full examination of the overhead beams or structures should be done as regular “in-house” routine checks.
- Ordinarily the playground inspection includes all play equipment regardless of manufacturer, safer surfacing, and ancillary items including seating, bins, fencing, pathways and approaches. *If the inspection is limited to specific assets only details are shown under “Site Information”.*
- Our inspections are visual non-dismantling inspections and where it is felt that removal of parts is required this will be advised in the report.
- It can be difficult when assessing decay at or below ground level where synthetic surfaces have been installed. Every effort is made to make assessment of the condition of support structures but this is not always possible without removal of the surface.
- During an inspection, should a fault be found that is deemed to be dangerous to life i.e. to potentially cause major injury or death, every effort will be made to contact the client before leaving the site. The item will be taped off as a temporary precaution.

Site Information



Inspection completed: 10.40 am.

Weather: Sunny intervals

General Site Comments:

Area subjected to the Government's closures/restrictions due to the Covid 19 Coronavirus.

Item: 1 Bay 2 Cradle Seat Swing Unit

Manufacturer: Wicksteed Leisure



Observation:

Tiles are separating

Task:

Fill gaps



Observation:

Minimal wear on shackle connections

Task:

Monitor only at this stage



Observation:

Minor damage on both seats, heavily stained with algae

Task:

Monitor damage. Clean off algae or replace seats

Item: Three Tower Junior Multiplay Unit

Manufacturer: Wicksteed Leisure



Observation:

Some wear to several round logs on the bridge

Task:

Replace those particularly where wear is on the connections



Observation:

Paintwork is poor throughout

Task:

Consider re-painting



Observation:

Graffiti etched in to the roof

Task:

Monitor as almost impossible to remove



Observation:

Some minor damage on slide

Task:

Monitor only at this stage

Item: Elephant Springer

Manufacturer: Wicksteed Leisure



Observation:
Collar/sheath has wear

Task:
Monitor and as necessary replace collar/sheath



Observation:
Paintwork in poor condition

Task:
Consider re-painting

Item: Horse Springer

Manufacturer: Wicksteed Leisure



Observation:

Tiles are separating slightly in places

Task:

Infill tiles



Observation:

Collar/sheath has wear

Task:

Monitor and as necessary replace collar/sheath



Observation:

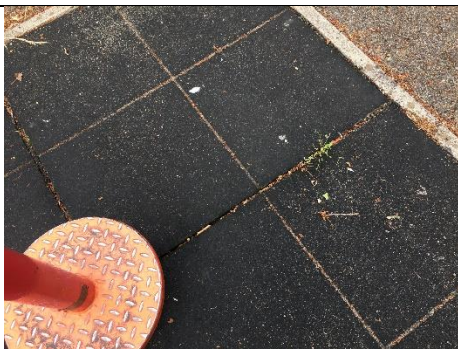
Paintwork in poor condition

Task:

Consider re-painting

Item: Spinner

Manufacturer: Wicksteed Leisure



Observation:

Tiles are separating in places

Task:

Monitor and as necessary infill gaps



Observation:

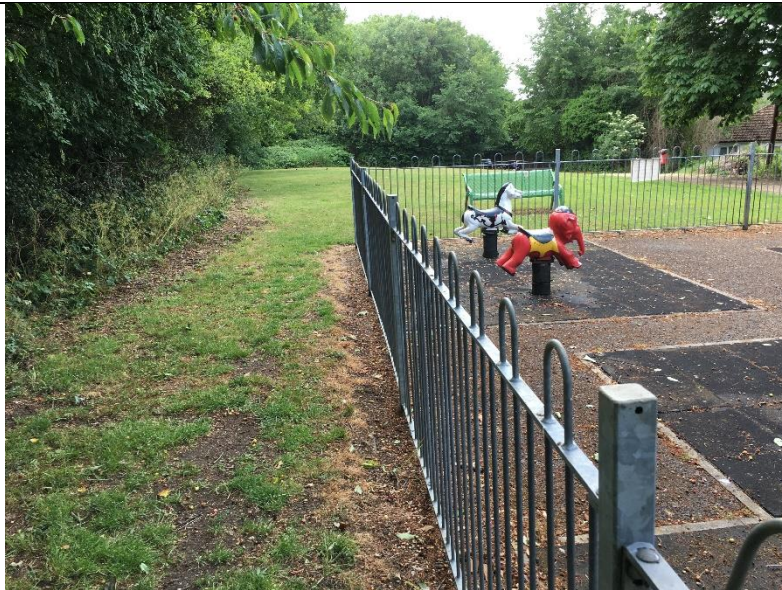
Paintwork in poor condition in places

Task:

Monitor and consider re-painting

Item: Bow Top Fencing & Gates

Manufacturer: Unknown



Observation:

Some minor damage to fencing

Task:

Monitor



See comment above

A handwritten signature in black ink, appearing to read "J. Adams".

Signed:

Report Completed: 11/6/20