

UPPER SWALLICK



Local Plan Draft Spatial Strategy Regulation 18 Consultation

The Residents of Cliddesden, Ellisfield, Winslade and the Candovers are invited to a meeting in Cliddesden Village Hall on Friday 9th January at 7.30pm to discuss our response

Agenda

7.30 Welcome

7.40 Video

8.00 Chris Paterson "The Response of Cliddesden Parish Council"

8.20 Les Smith "Key Objections"

8.30 Alan Tyler "Next Steps"

8.40 Question and Answer session at tables.

Six tables with representatives from the linked organisations giving everyone a chance to ask their questions in a more social surrounding.

9.30 Close

In this issue

Upper Swallick / Local Plan meeting	1	Parish council pages	6
100 Club	2	Cliddesden primary school	8
Village quiz night	2	Children's singing group	9
County council reuse, repair, disposal	2	Youth group	9
Village hall news	3	Farleigh Playgroup	9
Calling all first aiders	3	Village directory	10
Cliddesden Women's Institute.....	4	Cliddesden community conservation group.....	11
Film club	5	Coffee morning.....	12

100 Club



Happy New Year members

The draw for December was called at the Coffee Morning held at the Village Hall on 8th December 2025.

Here are the lucky winners

1 st	Lesley Randall	90
2 nd	Liz & Brian Karley	292
3 rd	Andy Fewster	354

Congratulations.

Best wishes for the New Year. Next Coffee Morning 12th January – do pop along – all welcome.

Rose Beevers Tel: 475944
100club@cliddesdenhall.org.uk



VILLAGE QUIZ NIGHT!



+



This popular annual quiz for teams of up to 6 people will be held at Cliddesden Millennium Village Hall on

Saturday, 14th March, at 7.00 pm.

This is a fund-raising event with all proceeds going to St. Leonard's Church, Cliddesden.

Tickets, priced £15 per person, to include a hot meal and one glass of wine, beer or a soft drink from the licensed bar, will be limited and only on sale until

Saturday, 7th March, available from:

Val Gofton-Salmond (07901 674531)

Please note:

This is the event that had to be unavoidably postponed from 8th November

Hampshire County Council Your views on reuse, repair, disposal

Hampshire County Council is inviting residents to share their views on how household items are reused, repaired, or disposed of and on wider issues around consumption and resource management. Your feedback will help shape future work on waste reduction, waste management, and sustainability. The survey can be accessed here: <https://tinyurl.com/bdzbwu3r>. It should take about 10 minutes to complete and is due to close on Sunday 11 January 2026 at 11:59pm.

Smart Living is Hampshire County Council's waste prevention initiative, engaging and enabling residents in ways to save money while helping the environment.

We provide information and tools which are freely available to residents. To find out more, please follow this link: <https://www.hants.gov.uk/wasteandrecycling/smartliving>

For any questions, please contact us at Waste.Prevention@hants.gov.uk

Village Hall News

cliddesdenhall.org.uk
facebook.com/CliddesdenVillageHall



I am writing this report after the Pantomime weekend, which was an enormous success with all three of the performances very well attended. Each year I am in awe of the diverse talent and skills we have in the community which is exemplified by the quality of this production. Whilst it is impossible to name everyone involved, there were a few debuts this year which deserve a special mention. The emergence of Martin Amos as writer of the show, in addition to his usual Director role. The completion of the Proscenium arch, conceived and built by Darren Capehorn. The introduction of the new stage curtains organised by Jo Capehorn, and the continual upgrade of the impressive lighting and audio systems by Kevin Mountstephens. and Andy Fewster.

Finally on behalf of the Trustees I would like to thank all the members of the excellent cast and set construction team of The Cliddesden Players, for the considerable time and effort they put in to delivering such a funny and enjoyable show, aided by the volunteers serving the bar and refreshments and other front of house services.

I am pleased to announce that this year's performance raised £3,420.00 for the Hall, an excellent result.

As this year closes it is worth reflecting on the works undertaken in the Hall during the last 12 months which include the following:

- Refurbishment of Hall & Meeting Room Floor
- Replacement of the Bar Shutter
- New Perimeter stage enclosure panels
- Refurbishment of the Male & Female Toilets
- External Landscaping to create Mary's Garden
- Replacement of the Kitchen Commercial Dishwasher
- Refurbishment of the Disabled Toilet
- Construction of the Proscenium Arch
- New Stage Curtains

In summary, a busy year funded by the fees received from the hosting of the mobile transmitter, donations from the community and the general hall activities.

A review of potential future works will take place at the next Trustees meeting in January.

During the year, the Hall commenced hosting a collecting bid for aluminium cans in aid of The Hampshire and Isle of Wight Air Ambulance. I am pleased to report that the sums raised in the area from collections accrued to £1,450.32 (October) and £1,208.77 (November) of which we made a significant contribution.

So please, continue to use this facility which now accepts broken Christmas Lights and mince pie cases, which can also be left in the bin!!

Finally, on behalf of the Trustees, I would like to wish you all a Healthy and Prosperous 2026.

Les Smith. 17th December 2025

www.cliddesdenhall.org.uk
facebook.com/CliddesdenVillageHall
LJSChairVH@outlook.com



UPPER SWALICK DATES AT THE HALL FOR YOUR DIARY

Parish Council Meeting	7.30pm Tuesday 6th January 2026
Public Briefing Meeting	7.30pm Friday 9th January 2026
Basingstoke & Deane roadshow	2.00pm-8.00pm Tuesday 13th January 2026



Calling all qualified First Aiders!

Free first aid help cross vector.



Do you have a first aid qualification for a group you are involved with or for your place of work?

Would you consider occasionally supporting a Village Hall run event by being the appointed first aider?

We do have members of the Village Hall Committee who have first aid training but they cannot always be available.

Hopefully, we will never have a serious incident but it

is always reassuring to have someone on call who has first aid knowledge.

It is kept very low key, known only to the organisers and a complimentary ticket to the event is yours!

Please consider supporting your Village Hall in this way if you can, it would be much appreciated.

Do contact me for any questions: Angie Fewster 01256 475848 or vicechair@cliddesdenhall.org.uk

theWI
INSPIRING WOMEN

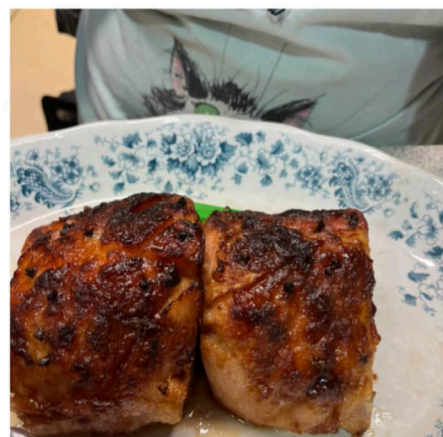
CLIDDESSEN

On Monday 15th 16 members gathered to enjoy a lovely Christmas lunch which was prepared by the committee.

The food was delicious and there was plenty of it!

We chatted, laughed and enjoyed each other's company.

Trisha read us a story called "The Nativity" which was about infant school children getting ready to perform their nativity play. It made us all smile and gave us a few laughs as well.



We rounded off the luncheon with a raffle which was organised by Christine and Jenny.

Our next meeting is a craft workshop on Monday 19th January at 10.30am.

We would like to wish everyone a Happy Christmas and Best wishes for 2026!

Caroline Poulter

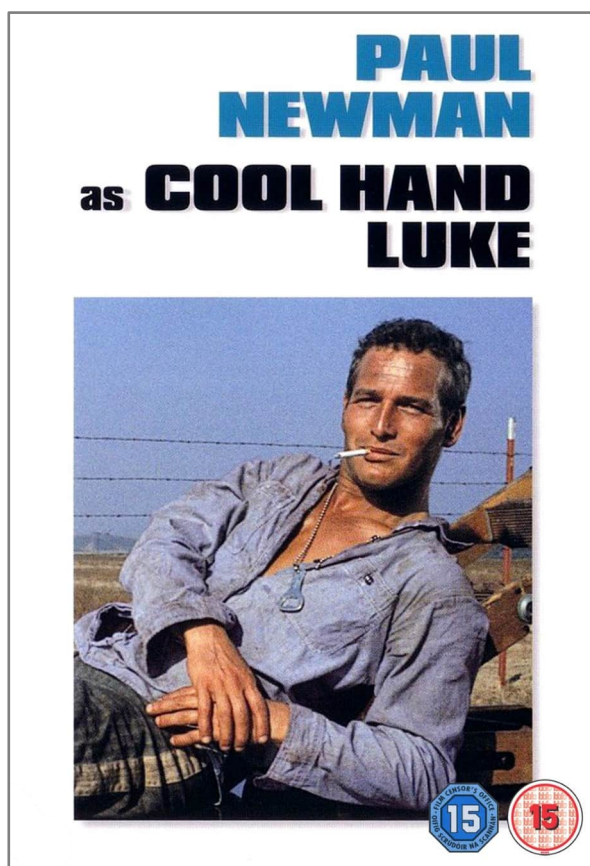
Social and Entertainment Club

Cliddesden Millennium Village Hall

'You'll be sure of a warm welcome and a great evening'

The bar opens at 7.30pm and we start at 8pm. There is an intermission half way through during which refreshments and drinks at the bar are available at very low prices.

Admission is only £2 per person. Please note we work on a cash only basis.



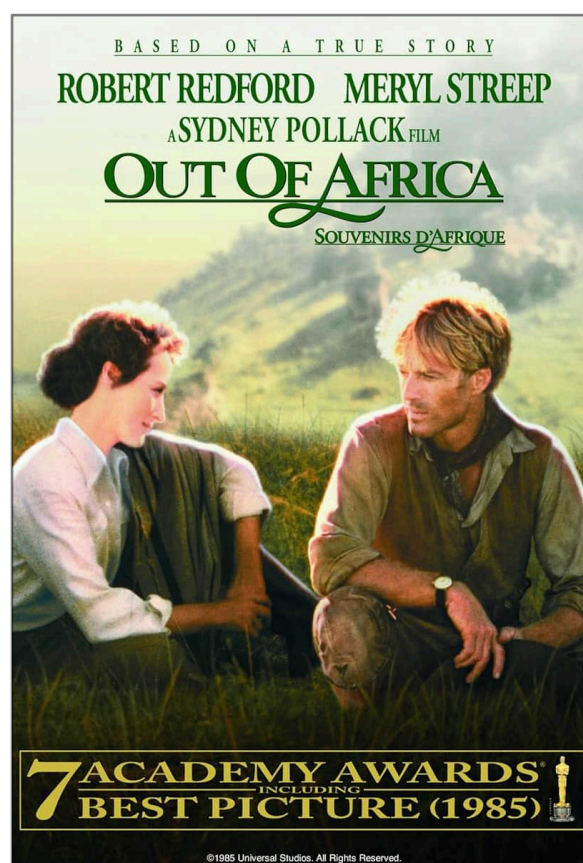
Thursday 8th January
Cool Hand Luke
 1967, 126 minutes
 Certificate 15

Cool Hand Luke. In early 1950's Florida, decorated World War II veteran Lucas 'Like' Jackson drunkenly beheads several parking meters. He is sentenced to 2 years on a chain gang in a prison camp. Luke refuses to observe the established order among the prisoners and quickly runs foul of their leader Dragline.

Starring Paul Newman, George Kennedy, J D Cannon, Lou Antonio, Robert Drivas, Strother Martin and Jo Van Fleet.

Out Of Africa is based loosely on the 1937 autobiographical book Out of Africa by Isak Dinesen

Set in Kenya in 1913, Danish aristocrat Karen Dineen (Meryl Streep) proposes a marriage of convenience to the brother of a Swedish nobleman who rejected her,



Thursday 5th February
Out Of Africa
 1985, 161 minutes
 Certificate PG

Baron Bror Blixen. They plan to move to Nairobi, where Bror intends to invest Karen's money in a dairy farm. When she joins him a few months later to marry him, Karen discovers he has changed their plan and instead bought a coffee farm.

Starring Meryl Streep, Robert Redford, Klaus Maria Brandauer, Michael Kitchen, Malick Bowens and Lesley Phillips.

NB This is a long film and we will therefore be starting at 7.45pm, 15 minutes earlier than normal.

Everybody welcome from wherever you live. We hope to see you there.

Diane Rampton
dianerampton@btinternet.com



NEXT PARISH COUNCIL MEETING
TUESDAY 06 JANUARY 7.30pm
 in the Village Hall meeting room
 everyone welcome.

PARISH PLANNING APPLICATIONS

25/02855/LDPO (Validated 04 Dec)
 Swallick Farm House, Alton Road.
 Certificate of lawful development for proposed change of use of agricultural building to flexible use within class E (commercial, business or service) as per Town & County Planning (General Permitted Development) Order 2015 (Class R Part 3, Schedule 2).

25/02856/LDPO (Validated 04 Dec)
 Swallick Farm House Alton Road.
 Certificate of lawful development for proposed change of use of agricultural building to flexible use within class B8 (storage or distribution) as per Town & County Planning (General Permitted Development) Order 2015 (Class R, Part 3, Schedule 2).

25/02516/FUL (Grant 19 Dec) Audleys Wood car park. Three x EV chargers.

25/02350/HSE (Grant 02 December)
 8 Station Road. Demolition of rear extension and construction of a two-storey side extension, single-storey front porch, changes to fenestration.

25/02272/FUL (Pending 18 Sept)
 Mistral, Hackwood Lane. Erection of a detached dwelling (self build).

25/01468/FUL (Grant 04 Dec) Land at Station Road. Replacement mechanic workshop (B2 industrial use).

25/01597/HSE (Pending 10 July) Three Horseshoes, Woods Lane. Replace cement render with lime render insulation system, replace windows and doors; replace tarmac with resin driveway. (Amended, reference to chimney removed.)

25/01313/OUT (Pending 27 May)
 Land North of Bramble Bank. Farleigh Road. Outline application, with all matters reserved save for access, for up to 17 dwellings with access, parking, open space etc.

24/02778/FUL (Grant 11 Dec), ref Development Control Committee of 10 Dec) Land South of Farleigh Road. Change of use of agricultural land to use for exercising dogs, incl fencing, pathway, shelter, access and parking.

24/02689/RET (Grant 05 December)
 Appleyard, Woods Lane. Variation of Con 1 (plans) of approved 20/01098/FUL (four new dwellings with parking and access) to amend approved width of access road.

24/00617/RET (Pending 17 June 2024)
 1A Millars Cottages, Station Road. Revised parking and landscaping, ref 20/00390/FUL (retrospective).

THERE IS ALSO AN IMPORTANT VILLAGE MEETING in the Village Hall on **FRIDAY 09 JANUARY 7.30pm** to discuss responses to the BDBC Local Plan Spatial Strategy Consultation.
See the notice on the front page.

Basingstoke and Deane is hosting its own drop-in session at the Village Hall as the notice below.



Basingstoke
and Deane

Have your say on the draft Basingstoke and Deane Local Plan

Basingstoke and Deane Borough Council is encouraging you to give your views on where homes, employment land and infrastructure should be planned for in the future. Following changes to national planning guidance requiring us to plan for more new homes, we have set out a new spatial strategy for our Draft Local Plan and we want to hear your thoughts. This includes new site allocations.

Running until 5pm on Friday 23 January, the consultation – technically known as Regulation 18 – is your chance to shape the Plan at an early stage. It builds on the previous consultation on the draft Local Plan in 2024 and comments made on the Plan at that time remain under consideration.

Drop in to an information event on Tuesday 13 January from 2pm to 8pm at Cliddesden Village Hall to speak to officers and find out more.

Visit www.basingstoke.gov.uk/DLP-have-your-say



PARISH PLANNING APPEALS

6001439 APPEAL IN PROGRESS. Land South of Woods Lane. Permission in Principle for up to four dwellings and associated access.

APP/H1705/W/25/**3371018** APPEAL ALLOWED. Land North of Woods. PIP for four dwellings plus access.

HACKWOOD PARK APPLICATION (WINSLADE PARISH)

25/00200/LBC (Pending 06 Feb) and **25/00199/FUL** (Pending 28 May)
 Hackwood House & Park: Conversion from residential use to hotel and ancillary hotel use. New and revised supporting documents added to BDBC website 19 December including for the Back of House facility on Farleigh Road, plus a Highways Technical Note.

PLANNING APPEALS CHANGES TO THE PLANNING INSPECTORATE ONLINE SYSTEM

The Planning Inspectorate has introduced a new online appeals service called Appeal a Planning Decision available to all local planning authorities (LPAs) in England from 01 December 2025.

The new service is replacing the older Appeals Casework Portal (ACP). Note the different style reference numbers for the two recent appeals from Woods Lane.

The Appeals Casework Portal (ACP) is now closed to new appeals for the types enabled on the new system – planning, householder, listed building consent. More categories, eg enforcement, will be added in early 2026. Existing cases already in progress on the ACP will continue to be managed there.

There is no crossover between the two systems, searching on one won't find an Appeal registered on the other.

THE FUTURE FOR HAMPSHIRE'S COUNCILS?

- Hampshire County Council has been around since 1889; the current two-tier structure and the District / Borough Councils since the 1974 Local Government Act.
- **None of these Councils will exist after May 2028. Government will decide by March next year the configuration of new 'Unitary Councils' to replace them.**
- Basingstoke & Deane Borough Council (BDBC) and other Hampshire Councils have submitted to Government their proposals for this 'Local Government Reorganisation'.
- **BDBC is urging all residents to support a 'North Hampshire' unitary council which would encompass the current areas of BDBC, Hart and Rushmoor.**

GOVERNMENT'S CONSULTATION SEEKS FEEDBACK ON THE FOUR PROPOSALS BELOW. PLEASE RESPOND BY 11 JANUARY.

The consultation can be completed very quickly. It has a section for each Option, with c10 multiple choice questions for each. You can give answers on as many of the Options as you wish. There is opportunity but no requirement for further comment.

<https://consult.communities.gov.uk/local-government-reorganisation/hampshire-isle-of-wight-portsmouth-southampton/>

The first three options are from the majority of Councils; importantly all feature a 'North Unitary'.

There are differences of opinion between these Councils regarding configuration in the south west - hence the three different variations of the proposal:

OPTION 1 - Favoured by BDBC, New Forest and Test Valley.

- NORTH: BDBC, Hart, Rushmoor.
- MID: E Hants, New Forest, Test Valley, Winchester.
- SOUTH EAST: Fareham, Gosport, Havant, P/smouth.
- SOUTH WEST: Eastleigh, Southampton.
- ISLE OF WIGHT to remain unchanged.

OPTION 1A - As above with modifications to proposed Unitaries in the south west by changing district / borough boundaries. Favoured by Eastleigh, Fareham, Hart, Havant, Portsmouth, Rushmoor and Southampton.

- NORTH: BDBC, Hart, Rushmoor.
- MID: East Hants, New Forest, Test Valley, Winchester (less 11 parishes from all four areas).
- SOUTH EAST: Fareham, Gosport, Havant, Portsmouth (plus three East Hants parishes and one from Winchester).
- SOUTH WEST: Eastleigh, Southampton (plus four New Forest parishes and three from Test Valley).
- ISLE OF WIGHT to remain unchanged.

OPTION 2 - favoured by Winchester.

- NORTH: BDBC, Hart, Rushmoor.
- MID: East Hants, Test Valley, Winchester.
- SOUTH EAST: Fareham, Gosport, Havant, P/smouth.
- SOUTH WEST: Eastleigh, New Forest, S/hampton.
- ISLE OF WIGHT to remain unchanged.

The further option is from Hampshire Council Council and East Hants and favours four Unitaries in total; the Isle of Wight plus three on the mainland.

In this option BDBC would be part of a much larger unitary based in Winchester, as Hampshire Council Council is currently based.

- MID NORTH: BDBC, East Hants, Hart, Rushmoor, Winchester.
- WEST: Eastleigh, New Forest, Southampton, Test Valley.
- SOUTH EAST: Fareham, Gosport, Havant, Portsmouth.
- ISLE OF WIGHT to remain unchanged.

FURTHER PLANNING POLICY CHANGES NEW DRAFT NPPF

(National Planning Policy Framework)

CONSULTATION to 10th March 2026

www.gov.uk/government/consultations/national-planning-policy-framework-proposed-reforms-and-other-changes-to-the-planning-system

According to the District Councils' Network (DCN) the changes will 'cut out the voice of local people'.

<https://www.localgovernmentlawyer.co.uk/planning/401-planning-news/99063>

Cllr Richard Wright, DCN Chairman and Planning spokesman, said:

'The whole essence of local democracy is that local people are empowered to take the big decisions about their place - but these proposals would ostracise local communities from the planning process.'

'The planning system is not the barrier to building 1.5M homes: inadequate water and electricity infrastructure stalls work, while developers have failed to build 1.4M homes which have already received permission.'

Cllr Wright called on the Government to address slow build-out rates by handing councils powers to 'prevent developers sitting on land'.

STAND UP FOR THE NORTH HAMPSHIRE DOWNS

STaNHd thanks everyone for their pledges to date, it is now half way towards its target.

If you haven't made a pledge, please consider contributing to the fight to save Cliddesden's Local Environment.

Please contact
alanbtyler19@btinternet.com

Cliddesden Primary School



We were delighted this week to welcome Reverend Jennifer to our school. It has been a while since Reverend David left the parish and we welcome a new vicar and re-established links to our local church.

Rev Jen, as she has been affectionately named, led an assembly about Advent and linked it to our school values. She will be visiting for an assembly at least once a month and is also our new co-opted school governor.

Basketball

Our year 5/6 Basketball Team took part in a Basingstoke Schools competition at The Vine School.

They played 4 games, winning one, drawing one and narrowly losing the last two, coming 4th overall. Although this year we didn't manage to qualify for the county finals, I was still impressed with the team's effort and skill and in particular their outstanding teamwork and sense of fair play. Also, we did win a trophy for being the highest placed small school.



Spelling Bee

This month we held a spelling Bee for all classes. The words were differentiated for all ages and after heats the finalists from each class went head to head. Congratulations to Silvie in Year 6 who was our winner.

Nativity

Willow and Beech Classes joined together to perform The Bethlehem Bake-off!

It's the night before Christmas, and Bethlehem is holding its annual baking competition. This year, though, there are a few surprise contestants: some shepherds from the local fields, a choir of angels from the heavens, and three wise-looking chaps who arrived on camels.

The children all learnt some fantastic songs and enjoyed sharing them with the school and all their families.

Very well done to all the children and staff who made this Nativity a baking success!

Kenneth Davies Headteacher





St Leonard's

MINOR KEYS

A CHILDREN'S SINGING GROUP

3.45-4.30pm
EVERY FRIDAY
ST LEONARD'S CHURCH

ST LEONARD'S CHURCH

YOUTH GROUP

AGES 10-14

12 NOON-1.30PM

14TH DEC 11TH JAN 8TH FEB
SECOND SUNDAY OF THE MONTH

ST LEONARD'S CHURCH, CLIDDSDEN

Farleigh Parish Playgroup



Cliddesden Millennium Village Hall

Friday Mornings 11am-12noon Term Time

Happy New Year! Come and join us in 2026

9th, 16th, 23rd and 30th January. 6th, 13th and 27th February (closed on 20th Feb for half term)

0 - 4 year olds and their grown-ups.

A warm welcome awaits you - we look forward to you joining us for a fun and happy time.

Cost: £3 donation per family

Contact:

Melanie (07833-528040) Claire (07757 498653)



VILLAGE DIRECTORY

POLICE	PCSO Andy Jones (Basingstoke Rural South) <i>andrew.jones.13301@hampshire.pnn.police.uk</i>	07775 542 021
NEIGHBOURHOOD WATCH	Simon Barker <i>sibarksy@hotmail.com</i>	07732 100 990
PARISH COUNCIL	Susan Turner (clerk) <i>clerk.cliddesden@gmail.com</i> www.cliddesdenparishcouncil.gov.uk Alan Tyler (chairman) <i>alanbtyler19@btinternet.com</i> Nicola Barnes <i>barnes72nb@gmail.com</i> Mark Gifford <i>m.gifford1@outlook.com</i> Alison Mosson <i>alison@abe.co.uk</i> Dave Rudge <i>hugh.rudge@gmail.com</i>	460 425 07504 104 621 07721 046 146 07813 070 261
TREE WARDEN	Alison Mosson <i>alison@abe.co.uk</i>	07721 046 146
WARD COUNCILLORS	Onnalee Cubitt <i>cllr.onnalee.cubitt@basingstoke.gov.uk</i> Kate Tuck <i>cllr.kate.tuck@basingstoke.gov.uk</i> Sheena Grassi <i>cllr.sheena.grassi@basingstoke.gov.uk</i>	07762 067 411 07762 067 411 07561 060 596
COUNTY COUNCILLOR MEMBER OF PARLIAMENT	Juliet Henderson <i>juliet.henderson@hants.gov.uk</i> Alex Brewer MP <i>alex.brewer.mp@parliament.uk</i> House of Commons, London SW1 AOM	07738 289 849
MILLENNIUM VILLAGE HALL	www.cliddesdenhall.org.uk Leslie Smith (Chairman) 3 rd alarm contact Angie Fewster (Vice Chair) 2 nd alarm contact Ken Rampton (Caretaker) 1 st contact if alarm goes off Pat Rampton (Lettings Secretary) <i>bookings@cliddesdenhall.org.uk</i> Jo Capehorn (Secretary) Julie James (Treasurer)	07973 922 560 475 848 461 034 461 034 07528 856 157 363 753
NEIGHBOURHOOD PLAN	www.cliddesdennp.wixsite.com/cliddesdennp	
CLIDDESSEN COMMUNITY CONSERVATION GROUP	cliddesdenconservation.org Alison Mosson (Chairman) <i>alison@abe.co.uk</i> Angie Fewster (Secretary) <i>angie@fewster.me.uk</i>	07721 046 146 475 848
JOLLY FARMER	thejollyfarmercliddesden.co.uk <i>theJollythai@gmail.com</i>	358 288
CLIDDESSEN PRIMARY SCHOOL	www.cliddesden.hants.sch.uk Kenneth Davies (Headteacher)	321 571
BROWNIES	Haley Louise <i>hayley-scott@live.co.uk</i>	07740 116 853
FARLEIGH PLAYGROUP	Claire Nunn Melanie Gill	477 197 07833 528 040
ST LEONARD'S DISTRICT CHURCH COUNCIL	www.farleighcandoverandwield.org.uk Rectory: Vacancy Peter Raine (Church Warden) <i>peter.c.w.raine@btinternet.com</i> Val Gofton-Salmond Julian Nunn	381 221 474 425 477 197
FILM CLUB	Diane Rampton <i>dianerampton@btinternet.com</i>	467 533
HORTICULTURAL SOCIETY	www.ellisfield.org.uk/hortsoc.html Marilyn Smith	462 584
WOMEN'S INSTITUTE	Janet Fagg (President) <i>jkfagg@gmail.com</i> Pat Rampton (Vice President) Julia Ross (Secretary) <i>cliddesdenssec@hampshirewi.org.uk</i>	461 034
CLIDDESSEN & FARLEIGH WALLOP EDUCATIONAL TRUST	Vicky Tibble (Secretary & Treasurer) <i>Vicky.tibble@outlook.com</i> By text to: <i>admin@portsmouthstates.co.uk</i>	07552 927 692
AGE CONCERN	The Orchard, White Hart Lane, Basingstoke RG21 4AF <i>reception@ageconcernbasingstoke.freemove.co.uk</i>	423 874
B/STOKE ASTRONOMICAL SOC	www.basingstokeas.org.uk	
HILL & DALE	Jean Frost (Editor) <i>hillanddaleeditor@gmail.com</i> Ben Maunder (Distributor)	327 859
VILLAGE ARCHIVE	www.cliddesden-archive.uk David Brown <i>dave@cliddesden-archive.uk</i>	
VILLAGE NEWSLETTER	Editor: David Brown Copy date 20th preceding month to: <i>bootofthedailybeast@gmail.com</i>	
CLIDDESSEN CHAT	www.facebook.com/groups/cliddesdenchat	



3CG MEMBERSHIP FORM

First name Surname

Address.....

..... Post Code

email Phone/mobile.....

Signature Date

☐ I give permission for these details to be held by 3CG and used solely for the purpose of communicating with me regarding 3CG.

Membership is £10 per household annually

☐ Cash to Alison Mosson (Chair & Treasurer): 'Larkrise' 11 Southlea, Cliddesden RG25 2JN
Or, Angie Fewster (Secretary): Ridgewood House, Farleigh Rd, Cliddesden RG25 2JB

☐ Set up a Standing Order via your online banking account:

- £10 BACS transfer for current year's subscription (or £10 cash) +
- Standing Order to debit your account with the sum of £10 (Ten Pounds) on the Second Day of January each year until further notice (details on tear-off strip below).

☐ 3CG Standing Order Form required for non-online banking users

3CG Banking details:

- £10 BACS transfer for current year's subscription + Standing Order to debit your account with the sum of £10 (Ten Pounds) on the Second Day of January each year until further notice payable to:

**THE CLIDDESSEN COMMUNITY CONSERVATION GROUP
NATWEST, BASINGSTOKE, OLD MARKET SQUARE BRANCH,
SORT CODE 60 – 02 – 49 ACCOUNT No 71066365**



Dear Members,

Membership is now due! If you're already a member and pay cash, please see Alison or Angie, or make a BACS payment (details on the form).

If you would like to join, (only £10 per household!), please complete the membership form overleaf, or to find out more please contact: Alison Mosson on 07721 046146 or alison@abe.co.uk, or Angie Fewster on 01256 475848 or angie@fewster.me.uk.

3CG is the village conservation group, a registered charity formed in 2004, to protect and enhance the natural environment within the parish.

We plant trees and hedges; sow wildflowers in verges and field margins; install nestboxes for birds;

maintain Cleresden Wildflower Meadow which is a haven for wildlife; organise walks, talks, surveys and litter picks and a whole host of other good things - like a summer picnic in the meadow and a spring social gathering & buffet in the Village Hall.

Join our Facebook group to keep up to date. A very warm welcome is extended to everyone, whether a village resident or not.

Save the Date! Our next Social Evening is on Tuesday 21st April 7.30pm at the Village Hall – short AGM, illustrated wildlife talk from a visiting expert, displays, raffle, bar and free buffet! What fun!!



Cliddesden Millennium Village Hall



Please come along to have a natter and make new friends, browse the second-hand book stall, and of course enjoy a good cuppa and a slice of cake!

The 100 club is also drawn here each month.

We have table tennis available and all the equipment you will need if you fancy a game.

We meet on the second Monday morning of each month, from 10.30 – 12 noon.

Hope to see you there, all ages are welcome.

Next dates: **January 12th, February 9th.**

Gill (01256 359413)