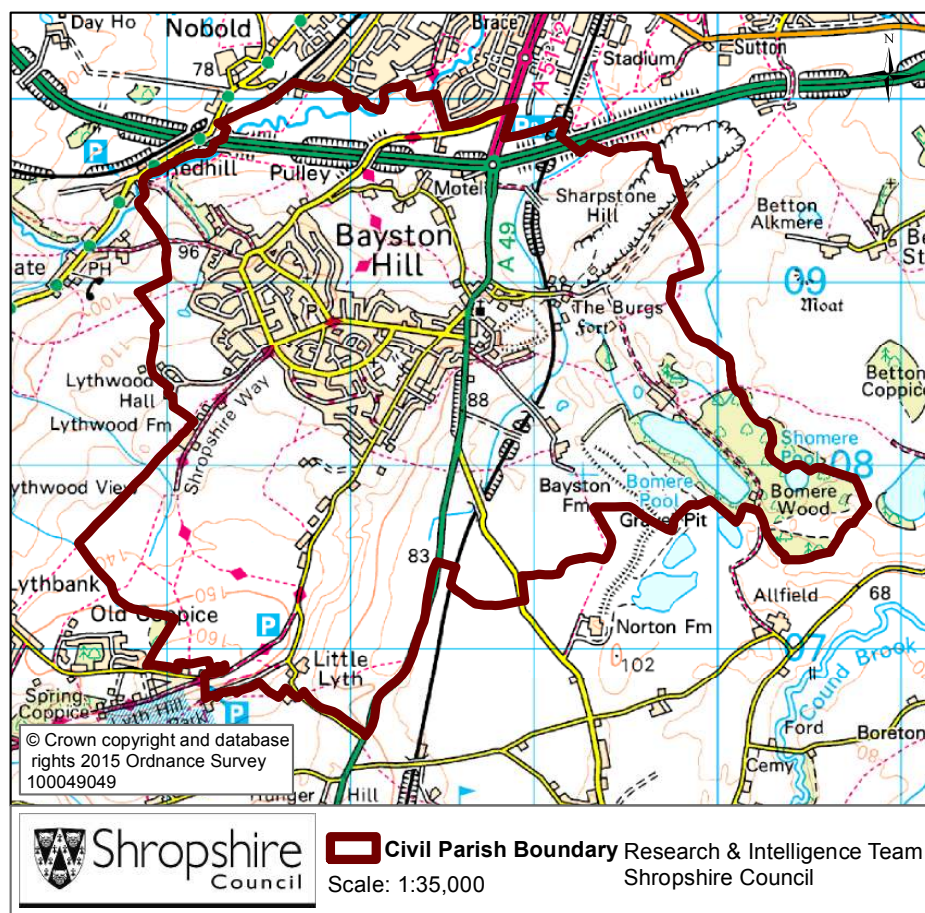


Bayston Hill Parish



Key Facts:	Bayston Hill Parish
Area:	864.0 hectares
Population Density:	5.90 persons per hectare
Total Population	5079 (2488 males, 2591 females)
Household Population:	5020 (98.8%)
Households: Dwellings:	2125 2172
Communal Establishment no. / population	4 Communal Establishments 59 residents (1.2% of total population)

Source: 2011 Census, Office for National Statistics, © Crown Copyright 2015.

Population Age Structure

Table: Population by five year age group (2011 Census)

	Total Population	% of Total Population			
		Bayston Hill	Shropshire	West Midlands	England
All ages	5079	100.0	100.0	100.0	100.0
0 – 4	212	4.2	5.1	6.3	6.3
5 – 9	226	4.4	5.1	5.8	5.6
10 – 14	269	5.3	5.9	6.1	5.8
15 – 19	309	6.1	6.2	6.6	6.3
20 – 24	222	4.4	5.4	6.8	6.8
25 – 29	229	4.5	5.1	6.5	6.9
30 – 34	242	4.8	5.0	6.1	6.6
35 – 39	270	5.3	5.8	6.4	6.7
40 – 44	363	7.1	7.2	7.3	7.3
45 – 49	373	7.3	7.7	7.2	7.3
50 – 54	349	6.9	6.9	6.3	6.4
55 – 59	338	6.7	6.6	5.7	5.7
60 – 64	431	8.5	7.3	6.0	6.0
65 – 69	377	7.4	6.2	5.0	4.7
70 – 74	304	6.0	4.9	4.0	3.9
75 – 79	216	4.3	3.8	3.2	3.1
80 – 84	182	3.6	2.9	2.4	2.4
85 – 89	123	2.4	1.8	1.5	1.5
90 Plus	44	0.9	0.9	0.7	0.8

Population Age Structure

- Early years: 4.2% (212 children) of the population were aged 0 to 4 years in March 2011. This compares with 5.1% at County level, 6.3% regionally and 6.3% nationally.
- School age: 13.6% (690 children) of the population were aged 5 to 17 years in March 2011. This compares with 14.9% at County level, 15.8% regionally and 15.1% nationally.
- Working age: 57.7% (2931 people) of the population were aged 18 to 64 years in March 2011. This compares with 59.3% at County level, 61.0% regionally and 62.3% nationally.
- Retirement age: 24.5% (1246 people) of the population were aged 65 and over in March 2011. This compares with 20.7% at County level, 16.9% regionally and 16.3% nationally.
- Over 85 year olds: 3.3% (167) of the population were aged 85 and over in March 2011. This compares with 2.7% at County level, 2.2% regionally and 2.2% nationally.

Diversity

- The 2011 Census showed Bayston Hill Parish had a black and minority ethnic group population of 53 (1.04%). The largest broad ethnic group is 'Asian' (within this the largest group is 'Asian Other'). For the first time the 2011 Census showed Bayston Hill Parish had a gypsy population of 6.
- When asked about their religion 28.6% (1455 people) identified themselves as having no religion or did not state it on the form. The majority of people (70.8%) identified themselves as Christian and 0.5% (26 people) identified themselves as having an alternative religion.
- The 2011 Census showed that 5 people could not speak English well and 3 people could not speak English at all.

Car Ownership

- The 2011 Census showed that 254 households (12.0%) did not own a car and subsequently are reliant on other forms of transport such as public transport services. In total 3212 cars are owned by households resident in the parish area.

Health

General Health

The 2011 Census asked three questions relating to health and the provision of unpaid care. The questions relate to whether people felt their general health was good, whether they looked after or gave help or support to other family members, friends, neighbours or others and lastly whether their day to day activities were limited because of a health problem or disability.

- At the time of the 2011 Census 45% of people in Bayston Hill said that they felt they were in “Very Good Health”, this compares to 46% for Shropshire as a whole.
- 0.9% reported that they were in “Very Bad Health”. This is slightly less than the overall result for Shropshire (1%)

Provision of Unpaid Care

The question asked “do you look after, or give any help or support to family members, friends, neighbours or others because of either; a long term physical or mental ill health/disability? or because of problems related to old age?

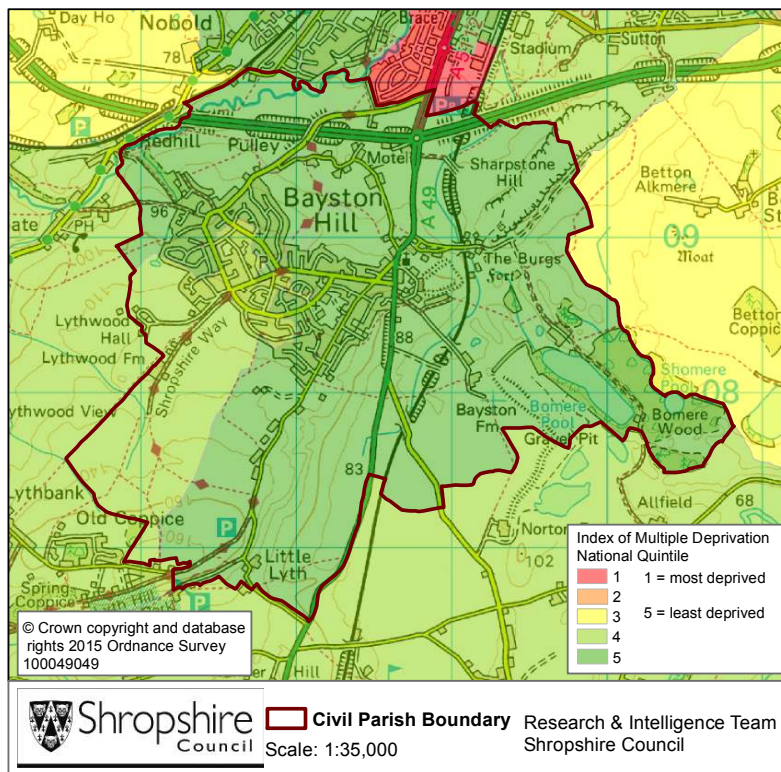
- At the time of the Census 8% said that they were providing 1 to 19 hours of unpaid care a week. This is slightly higher than the Shropshire figure of 7%.
- 1% said they provided between 20 and 49 hours per unpaid care. This is in line with the Shropshire figure of 1%.
- 3% said they provided over 50 hours of unpaid care. This is slightly higher than the figure for Shropshire as a whole (2%) and England & Wales (2%).

Long Term Illness or Disability

The Census asked “Are your day-to-day activities limited a lot due to a health problem or disability which has lasted, or is expected to last, at least 12 months?

- 9% said that their day-to-day activities were limited a lot due to a health problem or disability. This is slightly higher than the figure of 8% for Shropshire as a whole.
- The percentage who reported their day-to-day activities were limited a little was 10%. This is in line with the Shropshire figure of 10%.

Index of Multiple Deprivation



The lower super output areas that cover Bayston Hill Parish fall within Quintiles 4 and 5 nationally.

Quintile 1 is the most deprived nationally and Quintile 5 the least deprived nationally.

Source: IMD 2010,
Department for
Communities and Local
Government, © Crown
Copyright 2015

Housing Data:

- There were 2125 households in Bayston Hill at the time of the 2011 Census.
- The parish had 5079 usual residents and covers an area of 864 hectares.
- 1083 households were owner occupiers (owned outright) equating to 51.0% of all households. There were 759 households (35.7%) who owned their home with a mortgage or loan.
- There were 133 households (6.3% of all households) that privately rented their home from a landlord. There were also 22 households (1.0% of all households) who privately rented from a landlord classified as 'Other'.
- 23 households were renting social housing from the Council totalling 1.1% of all households. There were also 81 households (3.8%) renting social housing from 'Other' sources.
- In Bayston Hill there were 816 detached dwellings representing 37.6% of all dwellings. There were also 1185 semi-detached and 90 terraced dwellings equating to 54.6% and 4.1% respectively.
- 14.4% of all households were one person pensioner households.
- 25.6% of households in the area had dependent children. The number of married couple households with dependent children was 348 and the number of cohabiting couples with dependent children was 70.
- There were 89 lone parent households (with dependent children), which equates to 4.2% of all households.

Planning Land Use Monitoring Data for Bayston Hill, 2012-2013

Source: Shropshire Council, Planning Land Use Monitoring System, 2015

Housing

- During 2012-2013 there were 12 housing completions (gross) within the Bayston Hill Parish. Included in this figure is 1 affordable housing unit. During this time 1 dwelling was lost during development.
- At April 2013 there were 4 dwellings with planning permission outstanding, including 0 affordable houses.
- At April 2013, 0 proposed dwellings were part of the current Shropshire Council housing allocations. However the Planning Policy Team are currently awaiting the Inspector's Response to the public examination of the SAMDev 'Revised Preferred Options' and subject to any minor changes the SAMDev will hopefully be adopted in the summer of 2015.

Employment

- During 2012-2013, 0 hectares of Class B employment land was completed within the Bayston Hill Parish. The total completed gross floor space amounted to 0 square metres.
- At April 2013 there remained 0 hectares of Class B employment land outstanding with planning permission and 0 hectares of allocated employment land.

Retail

- A total of 0 net square metres of retail floor space was completed in the Bayston Hill Parish during 2012-2013.
- At April 2013, 700 net square metres of retail floor space remain outstanding.

Holiday Lets

- Within the Bayston Hill Parish, 0 holiday lets were completed during 2012-2013.
- At April 2013, 0 holiday let units remain outstanding.

Unemployment and Labour Market

Unemployment

- At the time of the Census, there were 81 residents who were unemployed but available for work. This is 2.2% of the 16-74 year old population, compared to 3.3% for Shropshire.
- 24 young people (aged 16-24) were unemployed, plus a further 14 who were 50 to 74.
- Long term unemployment is also an issue – 25.93% of all unemployed people were classed as long-term unemployed in 2011. This is the equivalent of 21 people.

Labour Force

- 2654 Bayston Hill residents aged 16-74 are economically active.
- 30.2% of the Bayston Hill population has level 4 or above qualifications compared with 27.5% in Shropshire and 27.4% in England.
- The number with no formal qualifications at all stands at 841 people – at 19.5% of the population (aged over 16), this compares with the county average of 22.5%.
- 38.1% of the population work in standard occupation classifications 1-3 (managers, directors and senior officials, professional, associate professional and technical) and 16.7% work in standard occupation classifications 8 and 9 (process, plant and machine operatives and elementary occupations).

Travel to Work (Census 2011)

- 10.1% of the population in Bayston Hill are self-employed, and 4.0% work from home compared with 5.6% for Shropshire.
- The car is used as the main means of travel to work for 53.9%, while 3.6% use public transport.

If you require any further information, or have any other research requests, please contact:

Intelligence & Research Team, Shropshire Council,
Shirehall, Abbey Foregate, Shrewsbury, Shropshire, SY2 6ND

Email: research@shropshire.gov.uk

Web: www.shropshire.gov.uk/facts-and-figures

Twitter: @ShropinFocus