

**BANK HOLIDAY**  
**MONDAY 31ST AUGUST**  
**GOODWORTH CLATFORD VILLAGE**  
**CLUB GROUNDS AND SCOUT HUT**

*Goodworth Clatford*

**FETE AND**

**FLOWER SHOW**

**THE VILLAGE FETE - OPENS AT 1PM**

- Free to Enter fun Dog Show
- Enjoy Tea on the Terrace
- Have a go at the coconut shy
- Boat Race
- And many more stalls and games!

**THE FLOWER SHOW - OPENS AT 2PM**

- Flower Section
- Vegetable Section
- Cookery Section
- Art and Photography section
- Junior Show

**Join the fun of a great day for all ages**

Free Entry for all Exhibits to the Flower Show.  
Donations Appreciated to Support Local Village Projects



# Welcome to the 2026 Fete & Flower Show

Fete Organiser:	Jane Drew
Flower Show:	Claire Henderson Lyn Wellend
Junior Show:	Kate Savage Becky Stevens

As a group, we do not have an Annual Subscription. Consequently, all residents within the Parish of Goodworth Clatford are automatically Members of the Group and able to submit entries. Others can submit entries, but will not be eligible for any cups. Junior Show Cups entries from Village, School, Messy Church, Scouts, Cubs, Beavers, Guides and Brownies are eligible for cups.

## This year is different!

Our beloved Village Club is having a make over! So whilst the windows get changed, the doors get improved, and everywhere gets a lick of paint - our use of it for our village fete will be changed slightly.

The Scout Hut have very kindly allowed us to rent their hall at a very community friendly rate.

This means that our flower show is able to continue!

Huge thanks to The Scouts for their support for our village.

You will also notice some changes in the programme itself. This has been done to entice more people to enter. The Junior Show is detailed on each page too. And the Boat Race has been changed to all ages!

All the information regarding the Fete and Flower Show will be on our Facebook Page.

Regular updates nearer the time will be given out via this platform, so please give us a follow so you don't miss out on any information and updates.



<https://www.facebook.com/GoodworthFete>

# **FLOWER SHOW PROGRAMME**

10-12 am Saturday 29th for entering/dropping off exhibits

Monday 31<sup>st</sup> August:

9.00 am – 10.30 am

9.00 am – 11.00 am

11.00 am

2.00 pm

3.30 – 4.30 pm

4.00 pm

4.30 pm

Dropping off/Late Entries

Staging of Exhibits

Judging Starts

Flower and Vegetable Show Open to public

Collect Prizes + Remove Exhibits

Presentation of Challenge Cups

Event Closes

# **FETE PROGRAMME**

1pm

1.45pm

2.15pm

3pm

3pm

3.15pm

3.30pm

4-4.15pm

4.30pm

Fete Opens

1st and 2nd Dog Show Competitions

Comedy Magic Show

Arrival of Mayor of TVBC

3rd and 4th Dog Shows

5th Dog Show – The Dog the Judge

Most Wants to Take Home

Children's Boat Race (Sheepwash)

Presentation of Cups & Prizes

Event Closes

This year, why not make something, bake something, grow something, capture something or volunteer to run a stall to make this a super August Bank Holiday Show for all the family.

**If you would like to Volunteer for helping on the day or prior to the day - we very much look forward to hearing from you!**

**Contact Jane Drew:**

**[jldnadrew@hotmail.com](mailto:jldnadrew@hotmail.com)**

# THE JUNIOR SHOW

THIS YEARS THEME:

PEOPLE  
**THE LETTER**



Open to all ages up to age 16

Residents of Goodworth Clatford, attend the Village School, Benefice Messy Church, or are invested in our village Scouts, Guides and Brownies are eligible for the Cups

# SECTION A:



# VEGETABLES AND FRUIT



1. Four of any variety of potato
2. Three carrots –any type
3. Five onions, tops tied, roots shortened, loose skin removed
4. Three beetroots
5. Six runner beans
6. Six French beans
7. Comic or plain ugly vegetable
8. Best pair of courgettes
9. Six cherry tomatoes\* (not exceeding 35 mm diameter) with calyx
10. Five tomatoes\* (over 35mm in diameter) with calyx
11. A Truss of Tomatoes\* (no limit on number of fruit & not all needed)
12. Your harvest vegetable
13. Three Peppers – any colour
14. Bunch of three varieties of herbs
15. Bunch of shallots
16. Two cucumbers (a matching pair), greenhouse or ridge
17. The longest runner bean
18. 3 Sweetcorn
19. Five Plums
20. Three Dessert Apples
21. Three Cooking Apples
22. Three Pears (any variety)
23. Dish (15 – 20cm) of berried fruit (one variety or mixed)
24. Dish (15 – 20cm) of any other fruit

**VEGETABLES** – should be clean, tender, fresh and without coarseness or blemishes and with trimmed foliage or calyx as appropriate

(\* Please state variety if known)

**FRUIT** – should have its natural bloom preserved and the presence of the stalk/calyx is essential. Large leaves should be removed. Fruit does not necessarily have to be in a fully ripened state

## JUNIOR SHOW:

### **1. Make a scene from Potatoes**

Any type of potato can be used – mashed, boiled, chips etc.

No bigger than A4 or a seed tray size.



# GOODWORTH

## CLATFORD VINEYARD



From grape to glass -  
a truly great English  
Quality Sparkling wine



Available from Clatfords Village Store  
or directly from the vineyard.  
Vineyard tours can also be arranged.

[hello@goodworthwine.com](mailto:hello@goodworthwine.com)  
Telephone: 01264 366 233  
[www.goodworthwine.com](http://www.goodworthwine.com)



## SECTION B: FLOWERS



**FLOWERS** – should be in the most perfect stage of their possible beauty and be fresh and free from damage

25. 1 Dahlia showstopper
26. Three Cactus Dahlia stems – any colour combination
27. Three Decorative Dahlia stems
28. Three Pom-pom Dahlia stems
29. Five Dahlia blooms (no buds) – mixed varieties
30. Five stems of mixed Sweet Peas
31. Five stems of French Marigolds
32. Five single stems of Cosmos – mixed colours – any type
33. Three Roses – Bud, Bloom and Blown
34. Bowl of Roses
35. Buttonhole or corsage
36. Dinner table centerpiece
37. One house plant
38. One cactus in flower – max pot size 20cm (8")
39. One stem of your favorite flower

## JUNIOR SHOW:

**2. Fill a shoe box with as many items beginning with P**

No boot shoe boxes please. Also nothing that will provide a smell.



Winner of Front Garden Award 2025



**Pam and Les Mullins**



## SECTION C: COOKERY



Judging is based on presentation, taste and appearance

**Notes:** Please keep plate diameters to the minimum for presentation.  
Add dates of production to all preserves.

40. Homemade alcoholic or non alcoholic drink
41. One jar of soft fruit jam
42. One jar of stone fruit jam
43. One jar of marmalade
44. One jar of jelly
45. One jar of chutney
46. Vegetable cake of your own recipe
47. Loaf of bread – hand or machine made
48. Fruit cake or loaf
49. Biscuit of your favourite recipe
50. Afternoon tea for two – judged on presentation and taste

## JUNIOR SHOW:

### **3. Make an edible sculpture of something beginning with P**

No bigger than A4 or seed tray



## Esme's Pet Cuddles



Caring, reliable pet sitting for your small pets while you're away

I offer loving care for cats and small animals in their own home, making sure they feel safe, happy and well looked after. From Feeding and cleaning to playtime and plenty of cuddles, I treat every pet like my own.

Perfect for holidays, weekends away, or busy days.

Goodworth Clatford and Upper Clatford

Contact me:

Esme Stevens 0775628930



# SECTION D:



## ART AND PHOTOGRAPHY

- 51. A Painting of any medium - A3 size maximum
- 52. A Drawing in Pencil or Other Media
- 53. A Photograph - ONE PERSON OR MORE
- 54. A Photograph - FEATHERED OR FURRY FRIEND
- 55. A Photograph - RIVER VIEW
- 56. A Photograph - LANDSCAPE
- 57. A Photograph - HUMOROUS
- 58. A Photograph - IN THE GARDEN
- 59. It's a stitch up! Knitting, embroidery or hand sewing
- 60. It's all in the knots - crochet or macrame
- 61. All Age Boat race - your boat must be able to fit into a shoe box and MUST NOT have a powered motor.

Max  
Size  
For all  
7"x5"



**NOTE: All entries in classes 51 - 60 must have been created or taken by the exhibitor and not recently exhibited in Goodworth Clatford.**

## JUNIOR SHOW:



- 4. Draw a picture of something beginning with P

No bigger than A4 or seed tray

- 5. Prepare a Poem Providing as many P words as Physically Possible.

Write a poem on A4 or smaller. You could decorate it with P words too!

This is a **poem** beginning with **P**  
 Like **Pretty Pollen** on a **Perfect Peach** Tree,  
**Pushing** and **Pulling** a **Pink Patterned Pot**,  
 With **Pumpkins** and **Pansies** and a **Pineapple** on top  
 In a **Planter** are **Petals** and **Pans** all **Proper** and **Prim**  
 I hope your **P Poem** gets you a win!

by Kate Savage

We would like to thank all those who have supported us to produce this Show Schedule by providing the advertising.

# Silver Beats and Treats



Handcrafted Silver Jewellery  
Rings, Necklaces, Bracelets and Earrings

Beginner Brass and Piano Lessons

Online, in home studio or in schools

Event Design

Bespoke poster design, social media design &  
programme design

Brass Repairs

Brass instrument repair

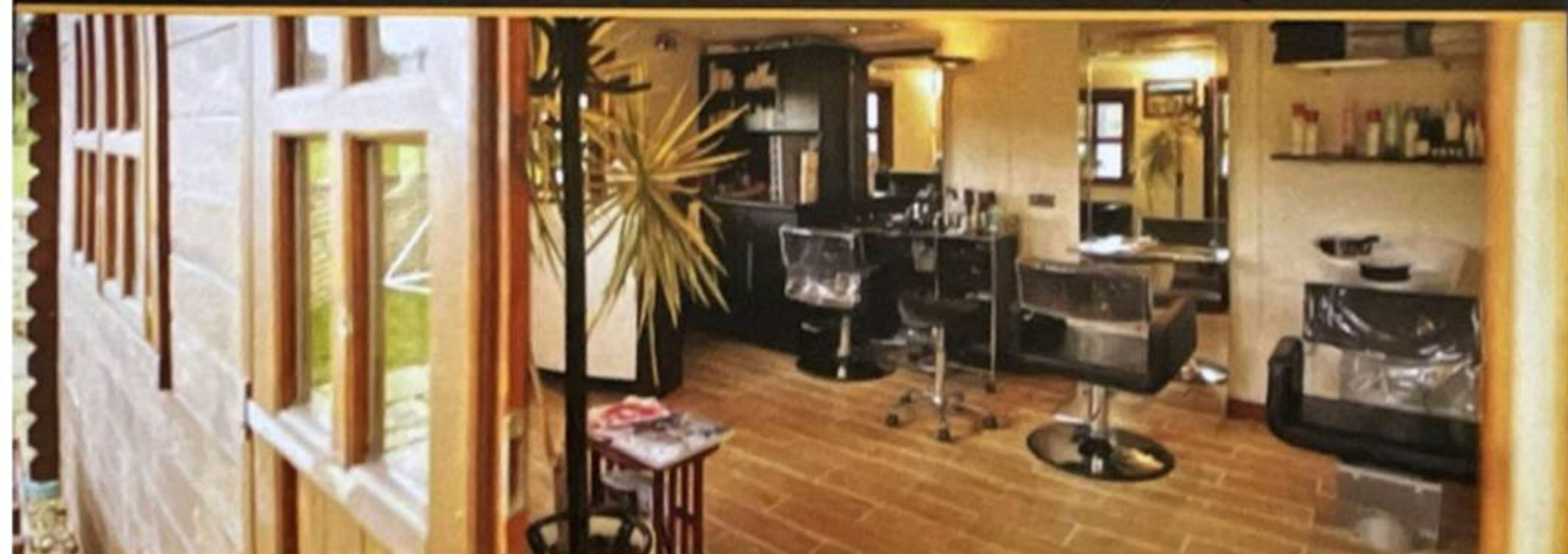
[www.silverbeatsandtreats.com](http://www.silverbeatsandtreats.com)

# HAIR DO



## SALON

relaxing & friendly colouring, cutting & styling



Call Lurdes 07789 723741

[lurdes@hairdosalon.co.uk](mailto:lurdes@hairdosalon.co.uk)

12 Burdock Close Goodworth Clatford Hampshire SP11 7RS

# CLATFORDS VILLAGE STORE & POST OFFICE



Providing our community with fresh bread, milk, eggs, meat, fruit, vegetables, local products, cards and gifts. With quality coffee and chocolate drinks, ice-creams, cakes, and more . . .

Also normal Post Office services including banking, currency, Amazon collections and returns, etc.



## OUR OPENING TIMES

MONDAY TO FRIDAY 8am till 5.30pm

SATURDAY 8am till 2pm

SUNDAY 8am till 1pm

For Public Holiday opening/closing see notices

## OUR SERVICES

- Newspapers delivered daily.
- Stockbridge Pharmacy Prescription delivery service daily.
- Dry Cleaning/Laundry. Collection Monday and Wednesday; return following week.
- Greenfield Pork products. Order Tuesday by 9 am; collect Thursday pm.
- Fresh butcher meat. Order Tuesday by 11 am; collect Thursday pm.
- Fresh Croissants/Pastries baked daily.
- Grimsby Fish Van. Thursdays 5:30 - 6:00 pm.

# Jessie Budd's Dog Walking Service



Available during school holidays and weekends to walk your dog.

Goodworth Clatford

Contact Jessie: 07768860648

# THE CUPS AND LAST YEAR'S WINNERS

## **The Garden Society Cup**

*KEN BROWN*

To the exhibitor with the highest number of points in Section A Vegetables and Fruit

## **The Jim Fleet Cup**

*KEN BROWN*

To the exhibitor with the highest number of points in Section B Flowers

## **The John Beaven Cup**

*KEN BROWN*

To the exhibitor with the highest number of points in Section A and Section B

## **The Lt Col B E Thompson Shield**

*GILLY ROBERTS*

To the runner-up in Section A and Section B

## **The Lt Col Stan Ivatt Cup**

*LYN WELAND*

To the exhibitor with the highest number of points in Section C Cooking

## **The Rev S A Gidlow Cup**

*MIKE RUSSELL*

To the runner-up in Section C

## **The Alison Savage Cup**

*DAVID MCADAM*

To the exhibitor with the most points in Section D Art and Photography

## **The Chef's Cup**

*LYN WELLEND*

To the exhibitor with the 'Best Cake in Show' in Section C

## **The Joan Lake Cup**

*ELIZABETH SCOTT*

To the exhibitor with the 'Best Preserve in Show' in Section C

## **The WI Rose Bowl**

*GILLY ROBERTS*

To the Goodworth Clatford WI member with the highest total number of points gained from all Show Sections

## **The Max Barnikel Diamond Jubilee Rose Bowl**

Best Rose in Show

## **The Queen Anne Cottage Platter**

*KEN BROWN*

Awarded to the family with the highest number of points from all classes.

## **The Stan Plank Cup**

*PAM & LES MULLINS*

To the best front garden as viewed from the road

## **The Max Barnikel Jubilee Cup**

*WILL WALKER*

Resident contributed most in past year

## **Stevens Cup**

*BEAR RILEY*

For the winner of the Boat Race

## **Junior Show Cups:**

### **Infant Cup**

*MONTY CROSSLEY*

For entrants 4 years and under

### **Rix Cup**

*ISAAC CROOMBS*

For entrants 5&6 years old

*MATILDA WINSTANLEY*

### **Warner Hall Cup**

*JAMES WINSTANLEY*

For entrants 7-9 years old

### **Hewson/Manisier Cup**

*ESME STEVENS*

For entrants 10-12 years old

### **Tull Cup**

For entrants 13- 16 years old



## ABOUT US

Here at The Clatford Arms we serve quality cooked pub food, with a great beer garden to relax in - with a kids goal post to keep them occupied and sports facilities indoors, including a pool table and a big TV screen.

We regularly have live bands playing, we have our weekly Sunday Meat Draw and lots more.

We also are available for events, so please contact us if you're interested.

## THE CLATFORD ARMS, GOODWORTH CLATFORD



BRING THIS PAGE WITH YOU ON YOUR NEXT VISIT FOR 10% OFF!

THIS CAN INCLUDE JUST DRINKS, OR FOOD TOO.

### Contact

01264 392138



nicole@clatfordarms.co.uk



<https://www.facebook.com/profile.php?id=61558230023718>



Longstock Road, SP117RN



FOUNDRY ROAD, ANNA VALLEY, ANDOVER. SP11 7LX  
01264 339795 / 01264 359422

FREE-RANGE PORK, LAMB, CHICKEN,  
DEXTER BEEF & OTHER LOCAL PRODUCE

OPENING HOURS: MON-FRI 9-5pm. SAT 9-3pm



*The Royal Oak*  
GOODWORTH CLATFORD

**TAKE  
AWAY**  
*Available*

# Quiz Night

WEDNESDAYS AT 8PM  
£2 PER PERSON IN CASH  
PLEASE AS THIS BECOMES  
OUR PRIZE POT!

*Fresh Fish*  
FRIDAY

JOIN US EVERY  
FRIDAY FOR A  
FRESH FISH SPECIAL!

## BAR

MONDAY  
12:00 - 22:00

TUESDAY  
12:00 - 22:00

WEDNESDAY  
12:00 - 23:00

THURSDAY  
12:00 - 23:00

FRIDAY  
10:00 - 23:00

SATURDAY  
12:00 - 23:00

SUNDAY  
12:00 - 20:00

## KITCHEN

MONDAY  
12:00 - 14:30 & 17:30 - 20:30

TUESDAY  
12:00 - 14:30 & 17:30 - 20:30

WEDNESDAY  
12:00 - 14:30 & 17:30 - 20:30

THURSDAY  
12:00 - 14:30 & 17:30 - 20:30

FRIDAY  
12:00 - 14:30 & 17:30 - 21:00

SATURDAY  
12:00 - 21:00

SUNDAY  
12:00 - 16:00

*Friday Morning*



*Deal*



10:00-12:00

CAKE AND A HOT DRINK



£6



☆ EXCLUDES DELUXE HOT CHOCOLATE



☆ CANNOT BE USED IN CONJUNCTION WITH ANY OTHER OFFER

## **FLOWER SHOW INFORMATION:**

- **Entry Forms to be handed in to the Show Secretary at the **SCOUT HUT** between 10.00 am and 12.00 pm on Saturday 29th August 2026 or any time prior to that day to Claire Henderson, Dovedale, Barrow Hill, Goodworth Clatford, or at the village shop.**
- Late Entries will be accepted during the dropping off time between 9.00 am and 10.30 am on the morning of the show, Monday 31<sup>st</sup> August.
- **To ease the task of the Show Secretary, please make every effort to hand your Entry Forms in on the Saturday**
- You will need ONE Entry Form for each person exhibiting in the Show.
- **Further Entry Forms are available on request from Claire Henderson as above.**

## **JUNIOR SHOW INFORMATION:**

- **As above and also:**
- All entries must be the work of the Entrant and produced within the last 6 months. For the 4 years and under class, guidance only (from parents) is permitted. For other class categories, no help is permitted.
- **Only one entry per category, per child.**
- Each age group will be judged separately and awarded points and prizes:  
1st ... 3 points ... £1.00 Prize  
2nd ... 2 points ... 50p Prize  
3rd ... 1 point ... 20p Prize
- **Open Class - for visiting children of any age up to 16. These entrants will be judged with their relevant age group.**
- Please note, any points awarded for open class entries will not be counted towards the family cup totals.

**PLEASE REMEMBER TO REMOVE YOUR EXHIBITS  
BETWEEN 3.30 pm – 4.30 pm**

All entry fees are free, donations for local Goodworth Clatford projects would be gratefully received.

# FLOWER SHOW ENTRY FORM

Name(Mr/Mrs/Miss)

Address:.....

I am a member of the WI:  yes  no Please tick

Junior Show info:

Age if entering Junior Show:.....

Village  School  Messy Church  Other .....  
Please specify

**You will need ONE Entry Form for each person exhibiting in the Show.  
No entries will be accepted without a completed entry form.**

**PLEASE PUT A CIRCLE AROUND EACH CLASS NUMBER THAT YOU WISH TO ENTER**

## SECTION A - Vegetables

01 02 03 04 05 06 07 08 09 10 11 12 13 14 15 16 17 18

## SECTION A - Fruit

20 21 22 23 24

## SECTION B - Flowers

25 27 28 29 30 31 32 33 34 35 36 37 38 39

## SECTION C - Cookery

40 41 42 43 44 45 46 47 48 49 50

## SECTION D - Art and Photography

51 52 53 54 55 56 57 58 59 60 61

## Junior Show

1 2 3 4 5

Boat - tick box

**YOUR TOTAL NUMBER OF ENTRIES.....**

All entry fees are free, donations for local Goodworth Clatford projects would be gratefully received.

**PLEASE REMEMBER TO REMOVE YOUR EXHIBITS BETWEEN 3.30 pm - 4.30 pm**